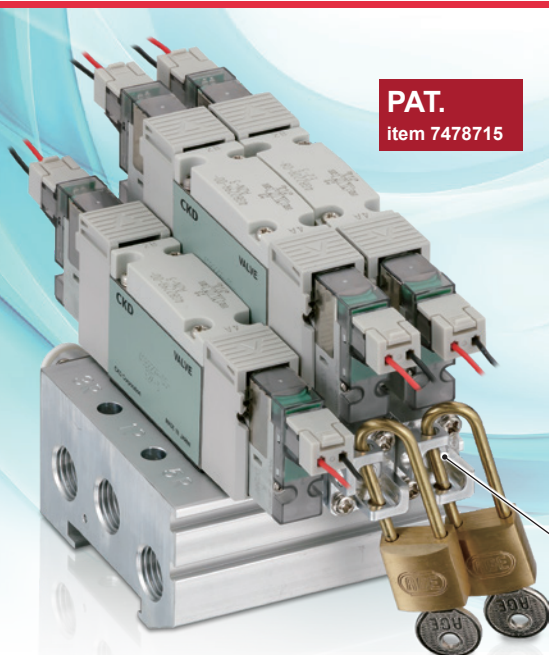


# Safety on Site, Verified by a Tag



## Features

- Forcibly holds the valve output with manual operation
- Safety structure that prevents accidental manual operation through lock management (LOTO standard compliant)
- Spacer structure allows for easy addition or removal of valves

## With LOTO In-stop valve spacer

\* Padlock is not included.

## What is the LOTO function?

Lockout/Tagout is an important procedure used to protect employees who operate, service, inspect, and maintain machinery from danger. They are used simultaneously to certify and clearly indicate that the power source has been shut OFF.

### [Lockout]

Shutting off the power source of a machine or device, such as a breaker, switch, or valve, and then attaching and locking a device during inspection or maintenance.

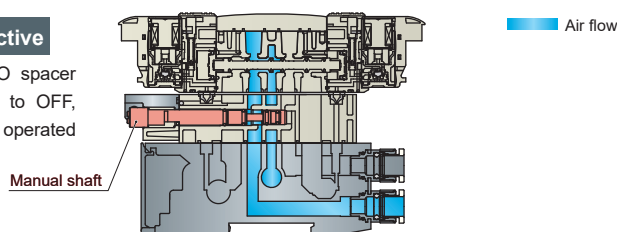
### [Tag Out]

A type of warning tag that is attached to a secure location locked by a lockout device, preventing the machine or equipment from being restarted until the tag is removed.

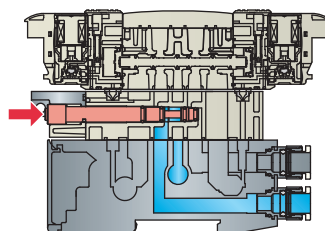
## Operating Principle

### LOTO ineffective

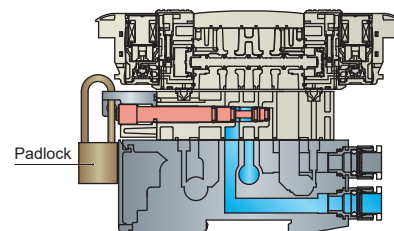
When the LOTO spacer is manually set to OFF, the valve can be operated normally.



### LOTO effective



Operate the LOTO spacer manually to forcibly hold the valve's secondary side output.  
(This is maintained even if the primary pressure is removed.)



The manual operator of the LOTO spacer can be managed with a padlock, etc., to prevent malfunctions from unexpected operation.

## In-stop valve spacer with LOTO function M4GB2/MN4GB2 Series

**CKD Corporation**

<https://www.ckd.co.jp/en/>

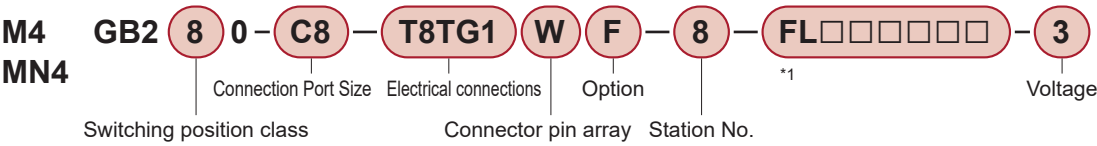
LN-020AA

● Contact a CKD Sales representative for special specifications of this product.

# M4GB2/MN4GB2 Series

## Model No. Notation Method

■M4GB2R Series, MN4GB2R Series



\*1. The 6-digit code for "□" will be filled in by CKD after the order model number is selected.  
\*2. For details on the M4GB2 and MN4GB2 series (specifications, model numbers, etc.), please refer to "Directional Control Valves 1" (Catalog No. RJ-011AA).



## Specifications

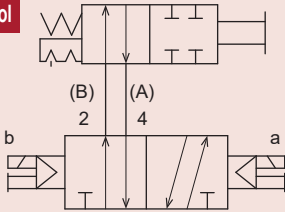
### Common Specifications

Item	Content
Operating Fluid	Compressed Air
Min. working pressure MPa	0.2
Max. working pressure MPa	0.7
Proof Pressure MPa	1.05
Lubrication	Not available
Protection Structure	Dust-proof
Operating Temperature °C	-5 to 55
Fluid temperature °C	5 to 55
Vibration resistance m/s <sup>2</sup>	50 or less
Shock resistance m/s <sup>2</sup>	300 or less
Atmosphere	Cannot be used in corrosive gas environments

### In-stop valve spacer specifications with LOTO function

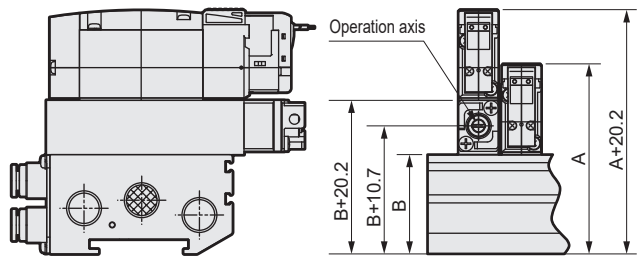
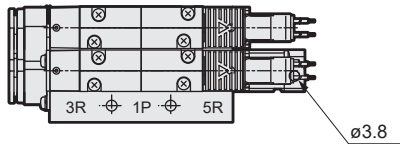
Item	Content
Keyhole size	ø3.8
Flow Characteristics	Flow path : 1 → 2/4
dm3/bar / sec	Flow path : 2/4 → 3/5
	1.5

### Circuit Diagram Symbol

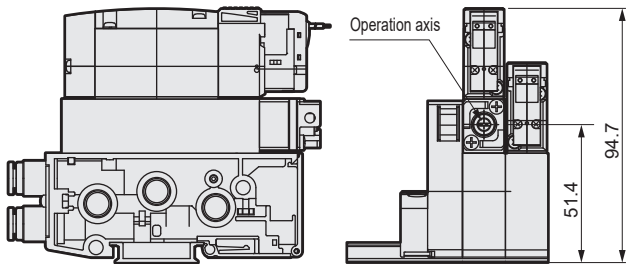
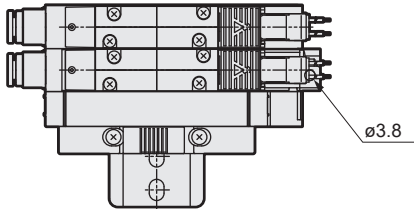


## External Dimension Drawings

### ● M4GB2



### ● MN4GB2



Note) For dimensions A and B, please check the external dimension drawings for each specification of the M4GB2 and MN4GB2 Series.

The goods and/or their replicas, the technology and/or software found in this catalog are subject to complementary export regulations by Foreign Exchange and Foreign Trade Law of Japan. The law requires a license from Ministry of Economy, Trade and Industry to export them.

## CKD Corporation

[Website]  
<https://www.ckd.co.jp/en/>

Head Office · Plant  
Tokyo Office  
  
Osaka Office

2-250, Oujii, Komaki, Aichi 485-8551  
4F, Bunkahousou Media Plus, 1-31-1, Hamamatsu-cho, Minato-ku, Tokyo 105-0013  
6F, PMO EX Shin-Osaka, 4-2-10 Miyahara, Yodogawa-ku, Osaka 532-0003  
TEL(0568)77-1111 FAX(0568)77-1123  
TEL(03)5402-3620 FAX(03)5402-0120  
TEL(06)6396-9630 FAX(06)6396-9631