

# Speed controller integrated into solenoid manifold valve not mounted on actuator side

## Solenoid valve

## Adjustment needle

- Rotation-stop mechanism every 45°
- Enhancing usability with tactile feedback.



## Speed control valve

Effective cross-sectional area [free flow] : 1.0 mm<sup>2</sup>

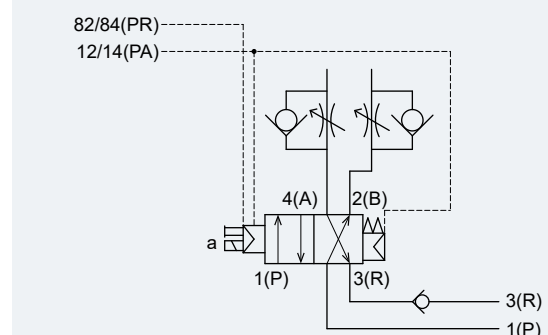
Effective cross-sectional area [Controlled flow] : 0.3 mm<sup>2</sup>

Flow rate adjusting range : 0.8 to 7.0 L/min (0.35 MPa)

## Features

- Adjustable actuator operating speed (meter-out circuit)
- Compact design with integrated speed control valve reduces space required on the actuator side
- Allows for adjustment of scattered actuator speeds from the solenoid valve manifold

## Circuit Diagram Symbol



# With speed control valve MN3/4E0 Series

**CKD Corporation**

<https://www.ckd.co.jp/en/>

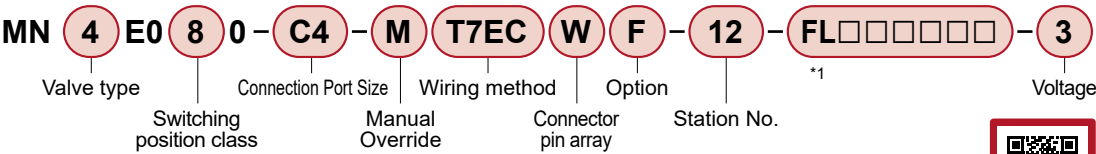
LN-019AA

●Contact a CKD Sales representative for special specifications of this product.

# MN3/4E0 Series

## Model No. Notation Method

■ MN3E0 / MN4E0 Series



\*1. After selecting the order model No., we will fill-in the "□" with 6 characters.  
\*2. Refer to "Directional control valve" (Catalog No. RJ-011AA) for details (specifications, model No., etc.) on the MN3E0 and MN4E0 Series.  
\*3. Solenoid positions "3", "4", and "5" cannot be selected.



## Specifications

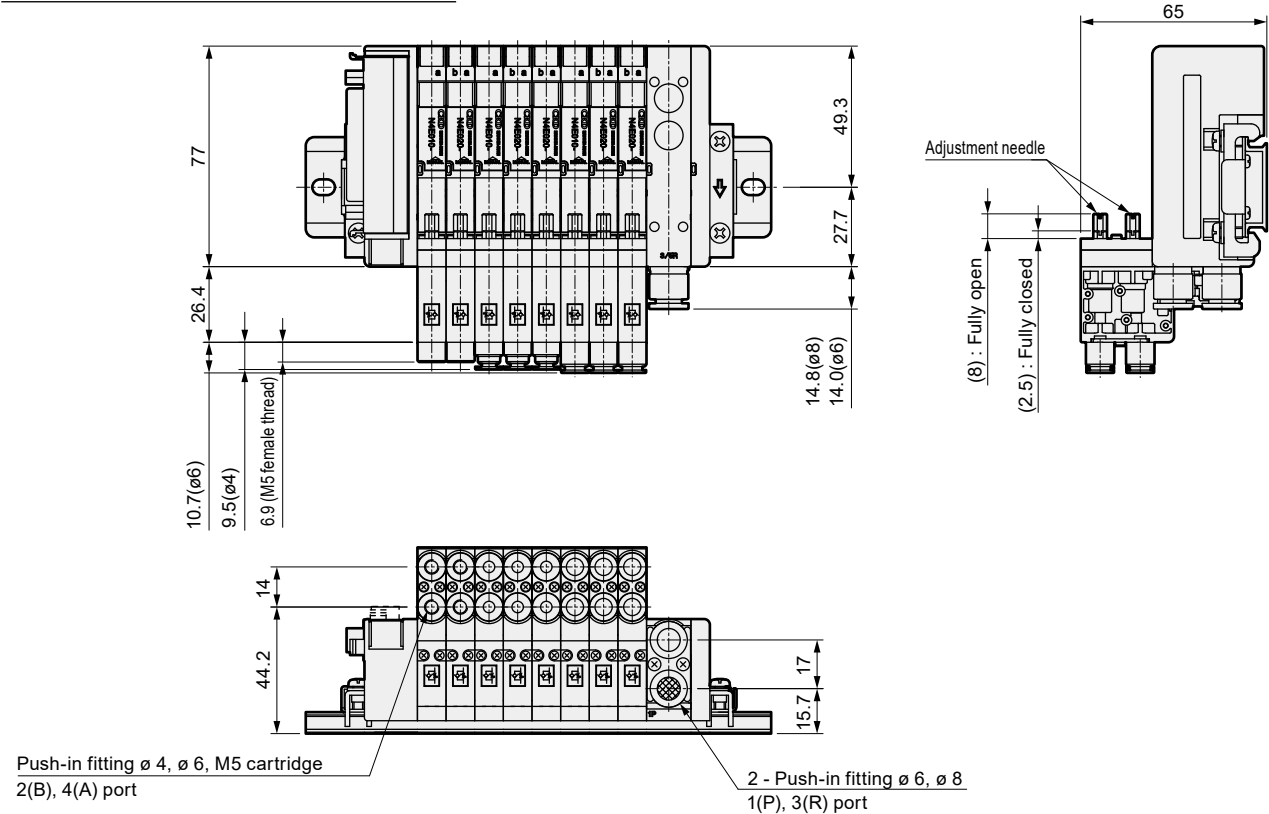
### Common Specifications

Item	Content
Operating Fluid	Compressed Air
Min. working pressure MPa	0.2
Max. working pressure MPa	0.7
Proof Pressure MPa	1.05
Lubrication	Not available
Protection Structure	Dust-proof
Operating ambient temperature °C	5 to 55
Fluid temperature °C	5 to 55
Vibration resistance m/s <sup>2</sup>	50 or less
Shock resistance m/s <sup>2</sup>	300 or less
Atmosphere	Cannot be used in corrosive gas environments

### Speed control valve specifications

Item	Content
Circuit	Meter-out
Effective Area (at max. flow rate)	Free flow mm <sup>2</sup> 1.0
	Controlled flow mm <sup>2</sup> 0.3

## External Dimension Drawings



If the goods and/or their replicas, the technology and/or software found in this catalog are to be exported from Japan, Japanese laws require the exporter makes sure that they will never be used for the development and/or manufacture of weapons for mass destruction.

## CKD Corporation

[Website]

<https://www.ckd.co.jp/en/>

Head Office • Plant  
Tokyo Office

Osaka Office

2-250, Oujii, Komaki, Aichi 485-8551  
4F, Bunkahousou Media Plus, 1-31-1, Hamamatsu-cho,  
Minato-ku, Tokyo 105-0013  
6F, PMO EX Shin-Osaka, 4-2-10 Miyahara,  
Yodogawa-ku, Osaka 532-0003

TEL(0568)77-1111 FAX(0568)77-1123  
TEL(03)5402-3620 FAX(03)5402-0120  
TEL(06)6396-9630 FAX(06)6396-9631