

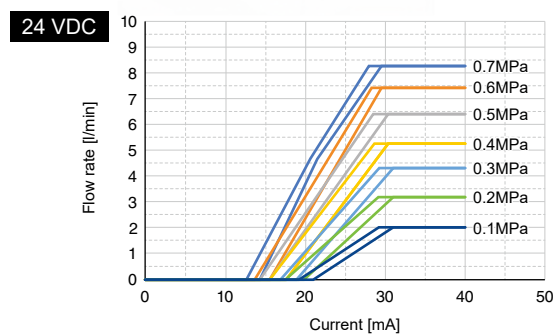
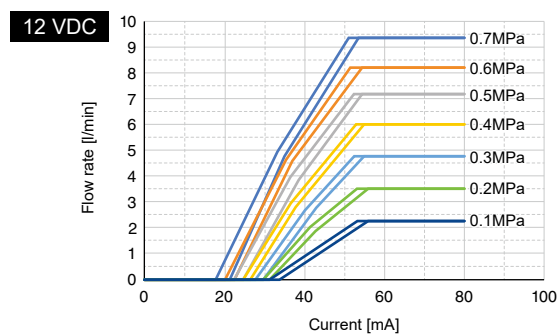
Control flow proportional to current
Ultra-compact 10 mm width with excellent quietness.

Energy-saving with max. power consumption of 1 W.
Integration by mounting on the manifold.

10 mm width

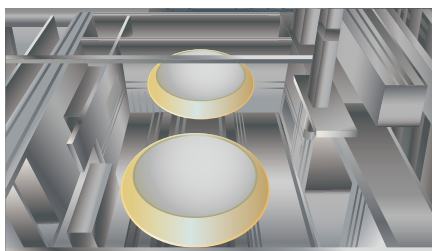


● Flow characteristics

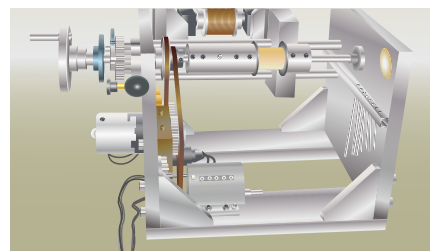


*Note that the flow rate may differ depending on the individual differences and piping conditions.

● Examples of applications



Resist coating for semiconductor manufacturing processes

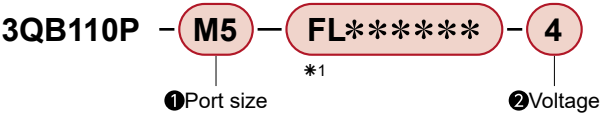


Tension control of coil winding machine, etc.

Compact solenoid proportional valve 3QB Series

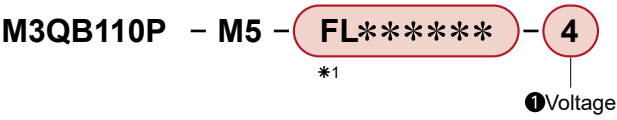
How to order

Discrete valve



①Port size	
M5	M5
T6	ø4 barbed fitting
②Voltage	
3	24 VDC
4	12 VDC

Manifold model No.



①Voltage	
3	24 VDC
4	12 VDC

*1. With regard to "※", after selecting the order model No., CKD will write a 6-digit code.

Specifications

Basic specifications

Item	Description
Working fluid	Compressed air, N ₂
Min. working pressure MPa	0
Max. working pressure MPa	0.7
Proof pressure MPa	1.05
Ambient temperature °C	-5 to 50 (no freezing)
Fluid temperature °C	5 to 50
Lubrication	Not available
Degree of protection	Dust-proof
Vibration resistance m²/s	30 or less
Shock resistance m²/s	150 or less

Electrical specifications

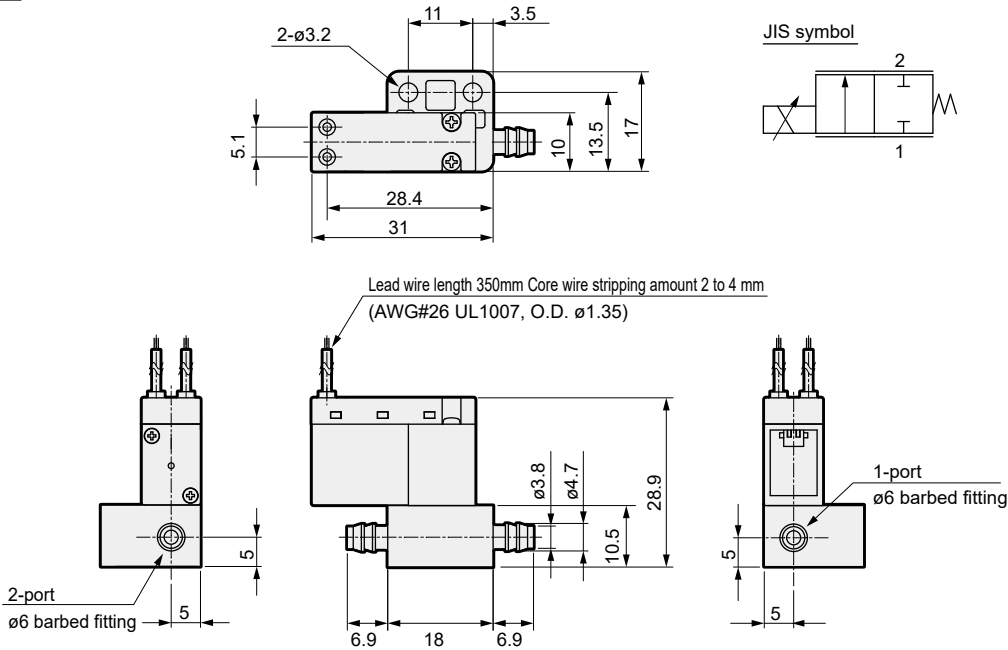
Item		Description	
		12 VDC	24 VDC
Coil current	mA	0 to 80	0 to 40
Power consumption	W	0 to 1	
Thermal class		B	
Surge suppressor		None	
Indicator		None	

Flow characteristics

Item		Description	
		12 VDC	24 VDC
Flow rate adjusting range	L/min	0 to 9	
Hysteresis	%	10	20

*This is not a guaranteed value since it is the characteristic value.

Dimensions



The goods and/or their replicas, the technology and/or software found in this catalog are subject to complementary export regulations by Foreign Exchange and Foreign Trade Law of Japan. The law requires a license from Ministry of Economy, Trade and Industry to export them.

CKD Corporation

[Website]

<https://www.ckd.co.jp/en/>

Head Office • Plant
Tokyo Office

Osaka Office

2-250, Oujii, Komaki, Aichi 485-8551
4F, Bunkahousou Media Plus, 1-31-1, Hamamatsu-cho,
Minato-ku, Tokyo 105-0013
6F, PMO EX Shin-Osaka, 4-2-10 Miyahara,
Yodogawa-ku, Osaka 532-0003

TEL(0568)77-1111 FAX(0568)77-1123
TEL(03)5402-3620 FAX(03)5402-0120

TEL(06)6396-9630 FAX(06)6396-9631