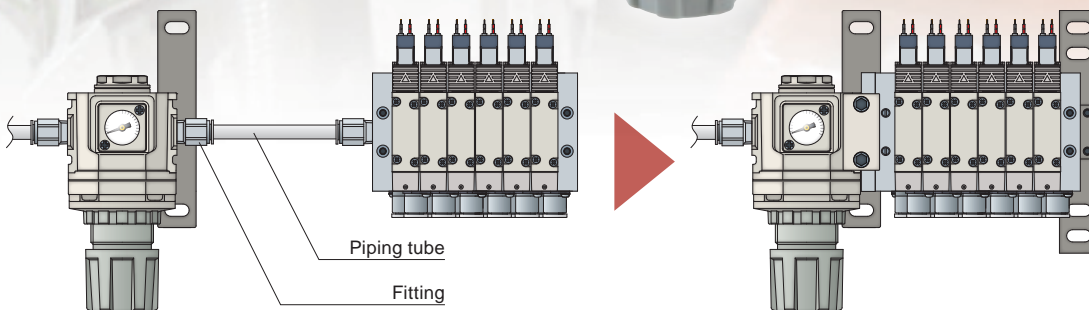


Space Saving & Easy Maintenance

Space saving

- Integrated manifold solenoid valve and regulator
- Easy valve pressure control
- Piping space reduction / installation man-hours can be reduced



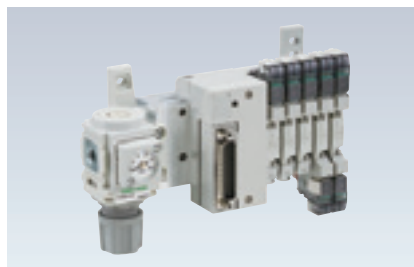
Reduces installation steps by cutting down on piping and fittings

Variation

- Compatible with individual and reduced wirings.



Individual wiring



D-sub connector



Serial transmission

4GB1 to 3R with regulator specifications

CKD Corporation

<https://www.ckd.co.jp/en/>

LN-005A

● Contact a CKD Sales representative for special specifications of this product.

M4GB Series with regulator

Valve specifications

Common specifications

Item	Description
Valve and operation	Pilot operated soft spool valve
Working fluid	Compressed air
Max. working pressure MPa	0.7
Min. working pressure MPa	0.2
Proof pressure MPa	1.05
Ambient temperature °C	-5 to 55 (no freezing)
Fluid temperature °C	5 to 55
Manual override	Non-locking/locking common (standard)
Pilot exhaust method	Main valve/pilot valve common exhaust
Lubrication *1	Built-in controller eliminates need for controller installation space and wiring.
Degree of protection *2	Dust-proof
Vibration resistance cm/s ²	50 or less
Shock resistance cm/s ²	300 or less
Atmosphere	Cannot be used in corrosive gas environments

*1. Use turbine oil Class 1 ISO VG32 for lubrication. Excessive or intermittent lubrication results in unstable operation.

*2. Avoid dripping water or oil, etc., during use. IP65 (water jet proof) applies for DIN terminal box specifications. However, the specified outer diameter of the cord and tightening torque must be used for fixing in place.

Electrical specifications

Item	Description	Voltage					
		24 DC	12 DC	5 DC	3 DC	100 AC	200 AC
Rated voltage V							
Voltage fluctuation range		±10%					
Holding current (A)	Standard	0.015 (0.017)	0.030 (0.034)	0.072 (0.082)	0.120 (0.136)	0.009 (0.009)	0.006 (0.006)
	(*3) With low exoergic/energy circuit	0.005	0.010	-	-	-	-
Power consumption W (*3)	Standard	0.35(0.40)		0.35(0.40)		-	
	With low exoergic/energy circuit	0.1		-		-	
Apparent power VA (*3) (*4)	Standard	-		-		0.93 (0.98)	1.40
	Thermal class	B					
Surge suppressor	Option						
Indicator	Lamp (option)						

*3. Values in () apply when lamp is included. In addition, the type with low exoergic/energy circuit is only available with lamp.

*4. 200 VAC is the value of the DIN terminal box (with lamp).

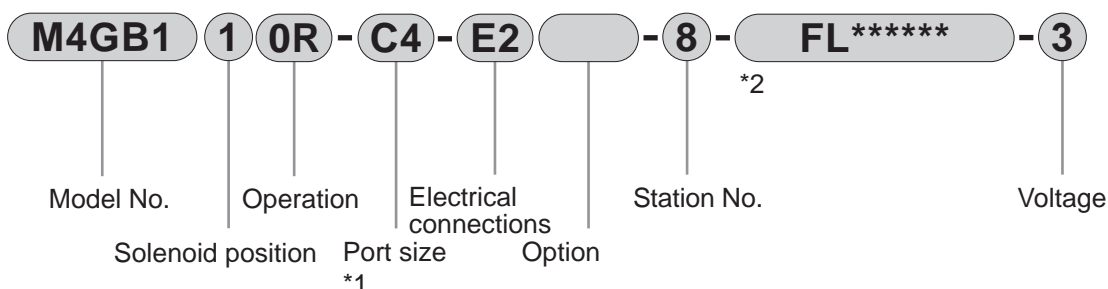
Regulator specifications

Item	Description
Working fluid	Compressed air
Max. working pressure MPa	1.0 MPa
Proof pressure MPa	1.5 MPa
Ambient/fluid temperatures °C	5 to 55°C
Set pressure MPa	0.2 to 0.7 MPa
Pressure relief	With relief function

How to order

● Manifold model No.

Base piping



*1: Port sizes M5, 06, 08, M5N, 06N, 08N, M5G, and 06G cannot be selected.

2: After selecting the order model No., CKD will enter a six-digit number into the "" section.

*3: Refer to "Pneumatic Valves (Catalog No. CB-023SA)" for details (specifications, model No., etc.) on the M4G Series

*4: Direct piping "A" and external pilot "K" cannot be selected.

*5: The maximum number of valve stations is 8.

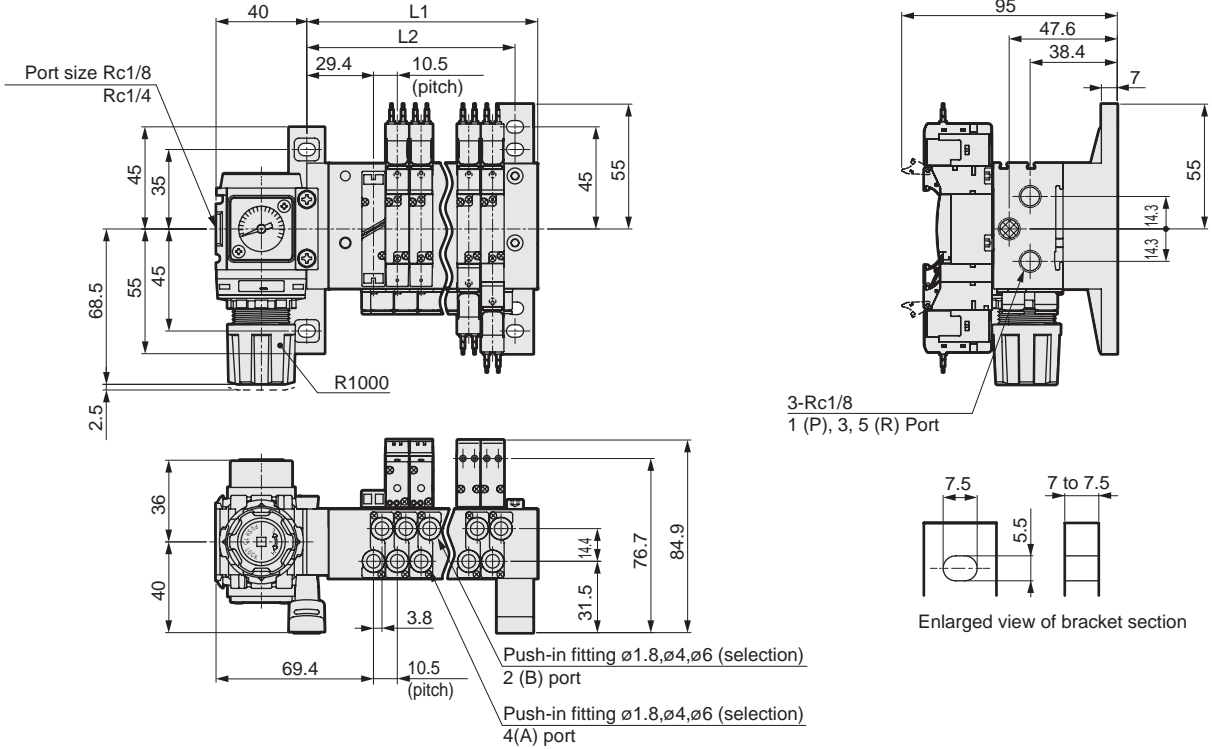
*6: Reduced wiring connection T6** cannot be selected.

*7: DIN rail mount "D" cannot be selected.

⚠ Read the safety precautions in "Pneumatic Valves" (Catalog No. CB-023SA) before use.

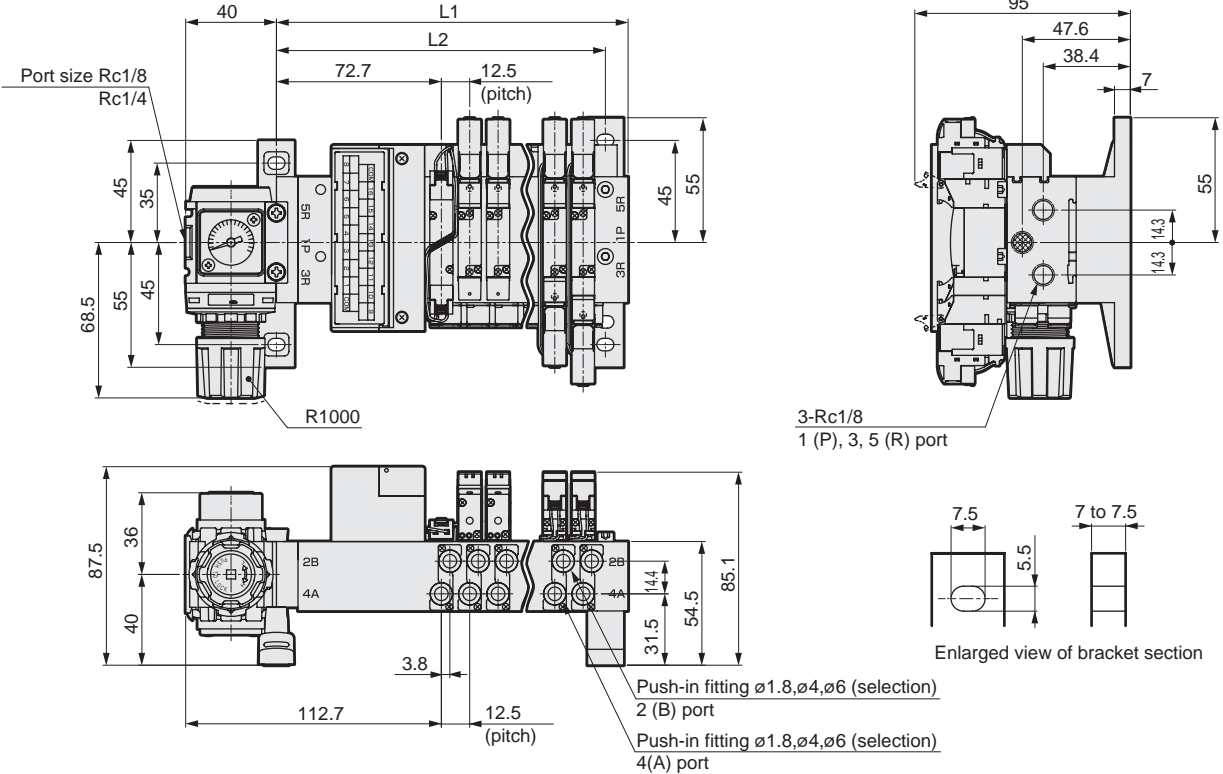
M4GB1 Dimensions

● Individual wiring manifold



Station No.	1	2	3	4	5	6	7	8
L1	49.3	59.8	70.3	80.8	91.3	101.8	112.3	122.8
L2	39.3	49.8	60.3	70.8	81.3	91.8	102.3	112.8

● Reduced wiring manifold (left-sided specifications)

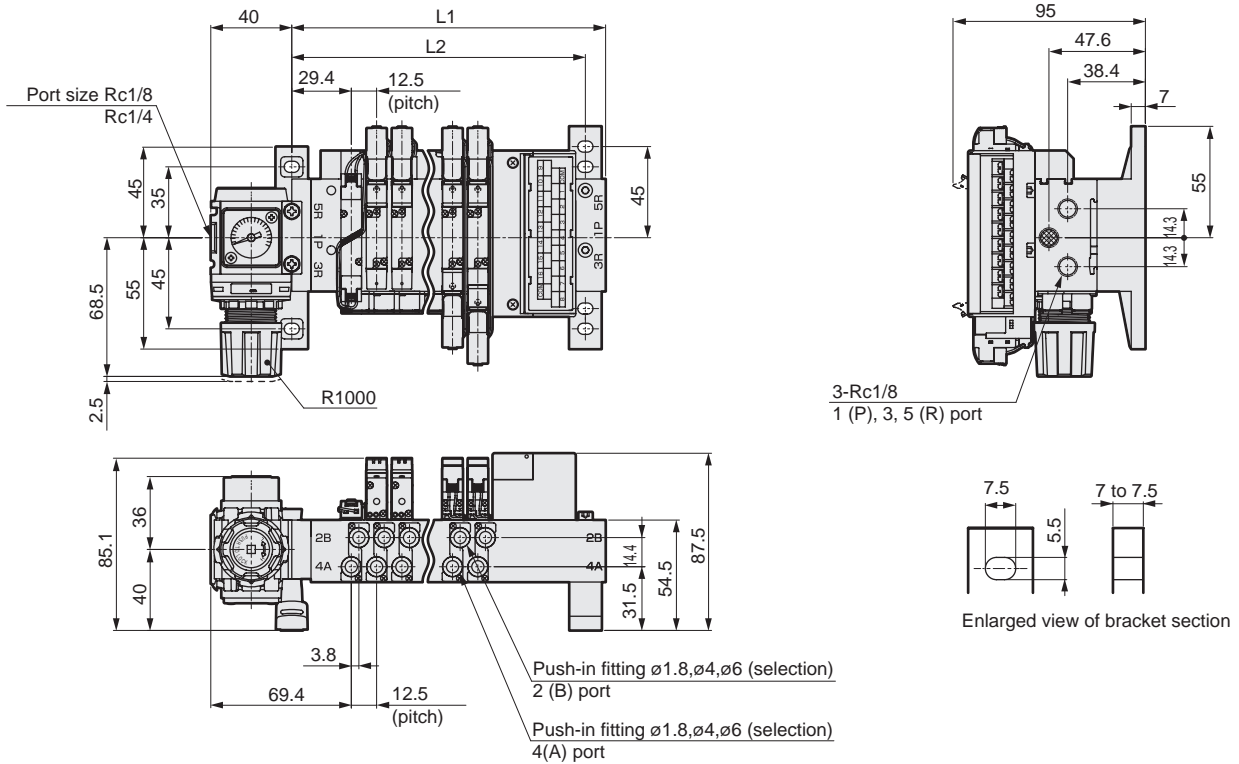


Station No.	1	2	3	4	5	6	7	8
L1	92.6	105.1	117.6	130.1	142.6	155.1	167.6	180.1
L2	82.6	95.1	107.6	120.1	132.6	145.1	157.6	170.1

M4GB Series with regulator

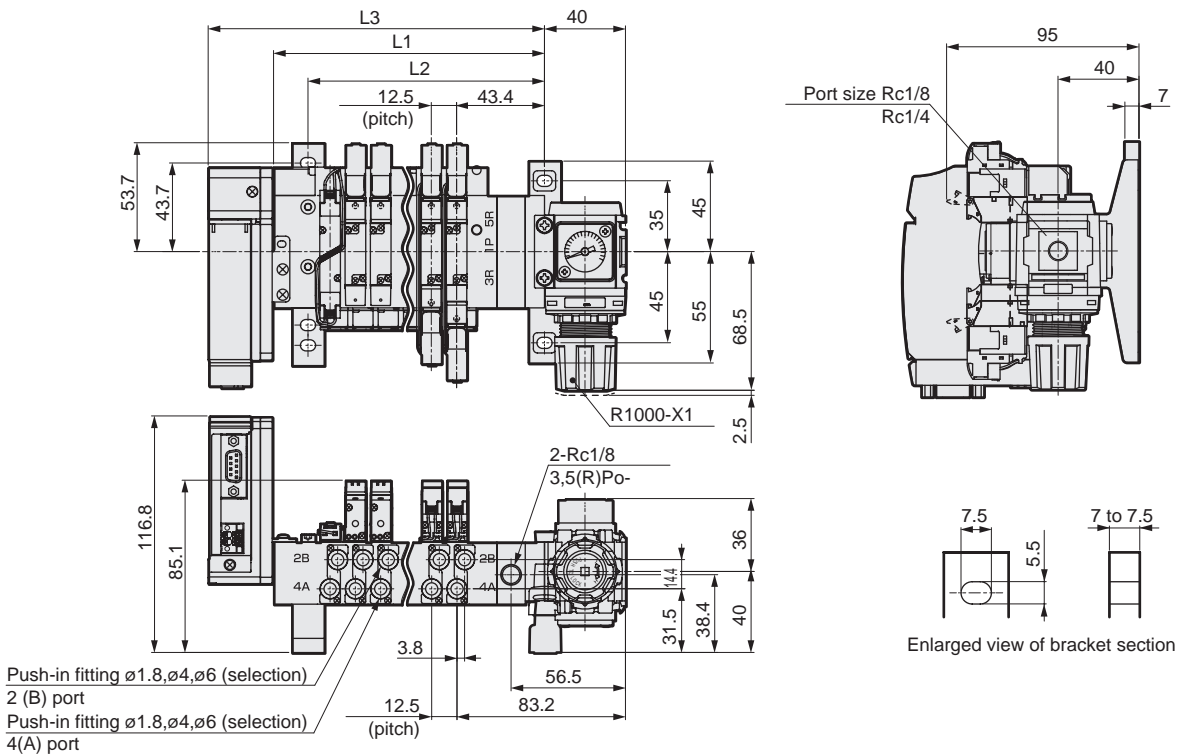
M4GB1 Dimensions

●Reduced wiring manifold (right-sided specifications)



Station No.	1	2	3	4	5	6	7	8
L1	92.6	105.1	117.6	130.1	142.6	155.1	167.6	180.1
L2	82.6	95.1	107.6	120.1	132.6	145.1	157.6	170.1

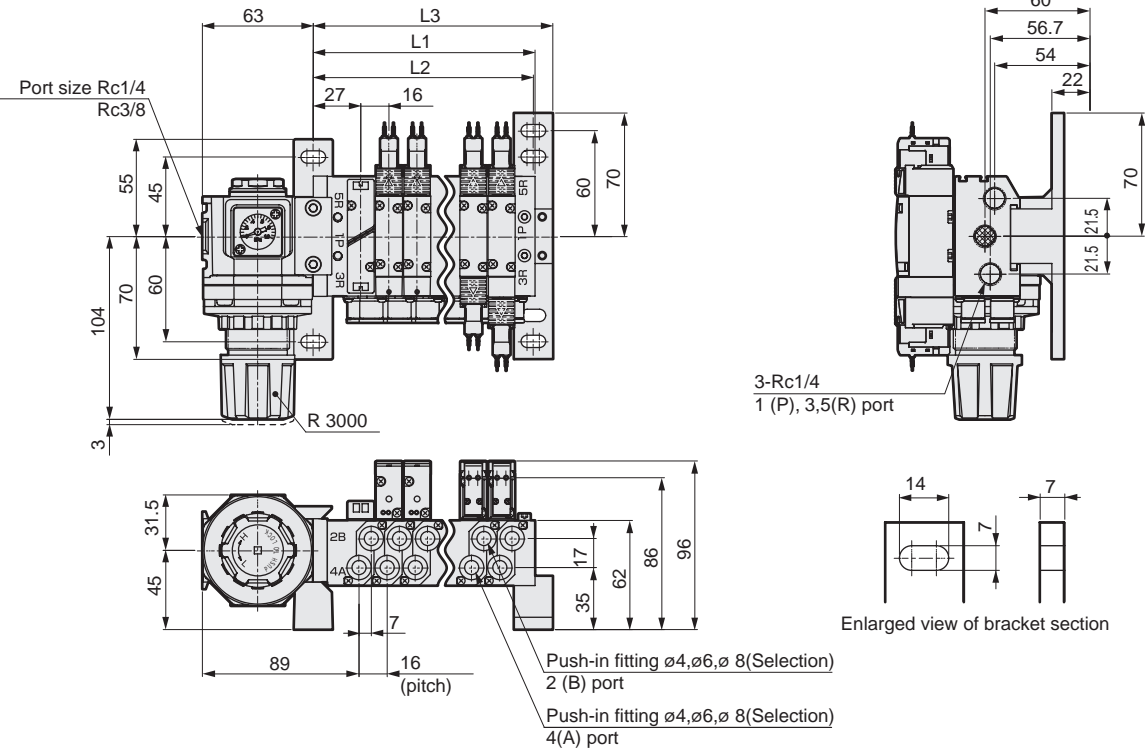
●Reduced wiring manifold (serial transmission)



Station No.	1	2	3	4	5	6	7	8
L1	71.3	83.8	96.3	108.8	121.3	133.8	146.3	158.8
L2	54.3	66.8	79.3	91.8	104.3	116.8	129.3	141.8
L3	103.1	115.6	128.1	140.6	153.1	165.6	178.1	190.6

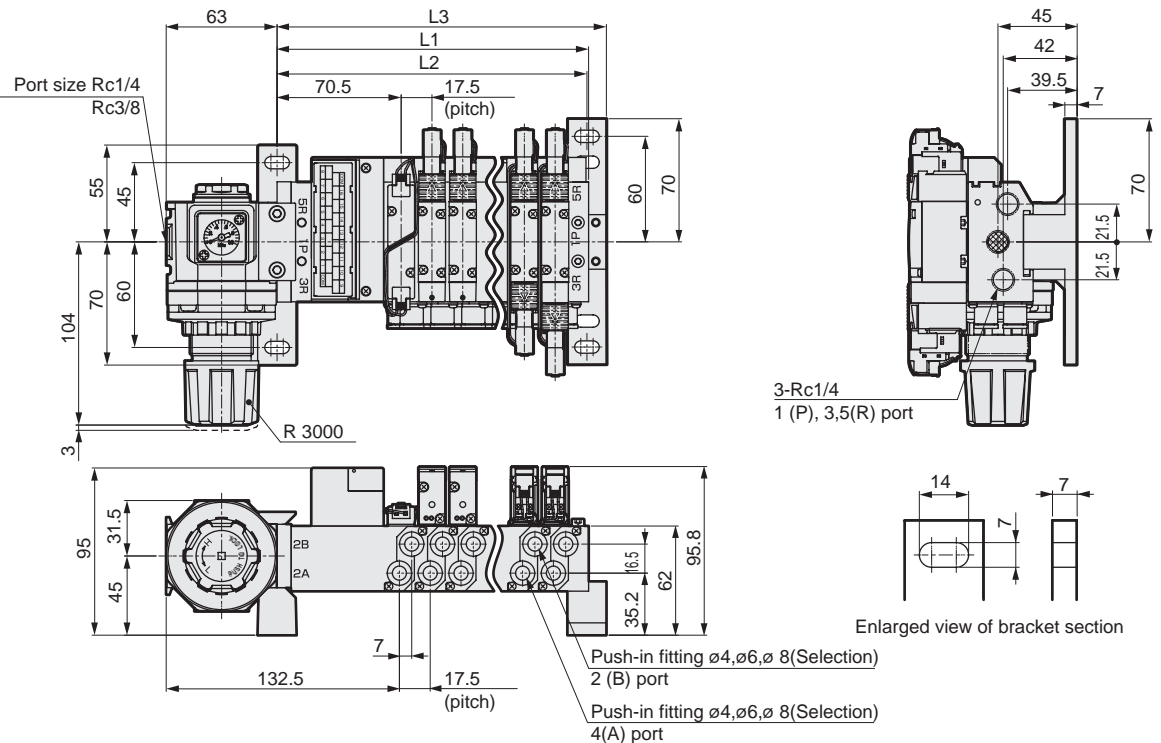
M4GB2 Dimensions

● Individual wiring manifold



Station No.	1	2	3	4	5	6	7	8
L1	46.0	62.0	78.0	94.0	110.0	126.0	142.0	158.0
L2	45.0	61.0	77.0	93.0	109.0	125.0	141.0	157.0
L3	56.1	72.1	88.1	104.1	120.1	136.1	152.1	168.1

● Reduced wiring manifold (left-sided specifications)

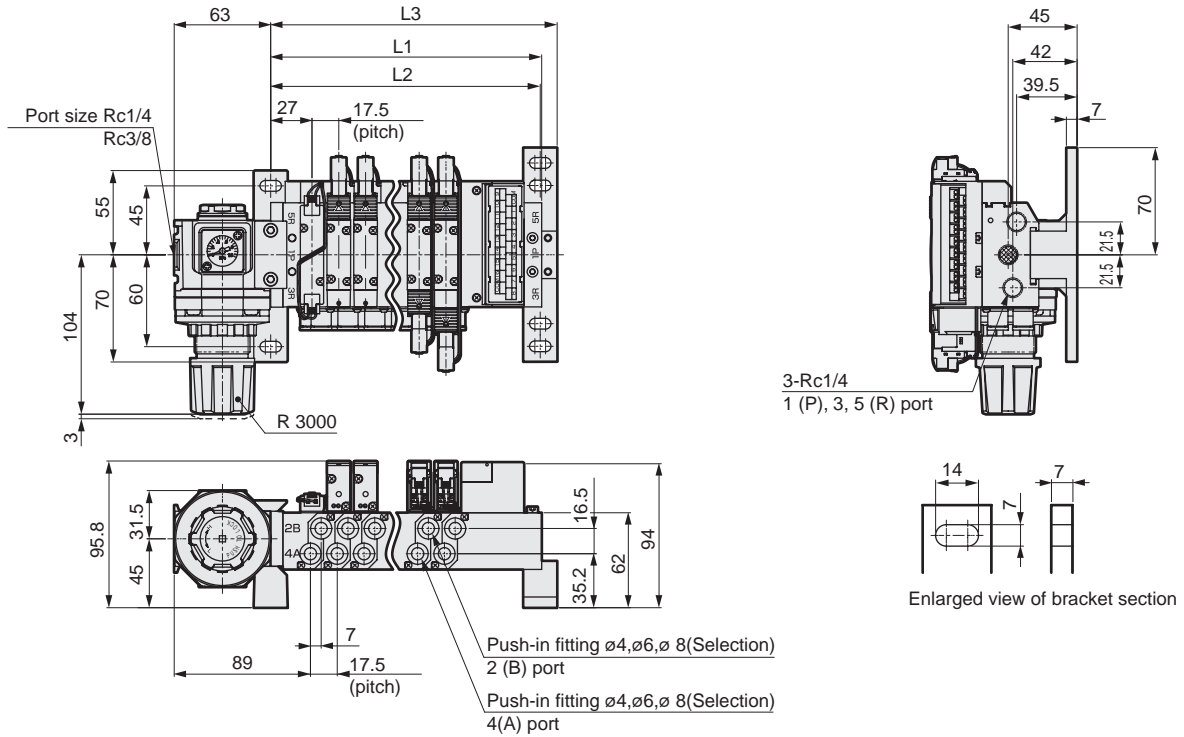


Station No.	1	2	3	4	5	6	7	8
L1	89.5	107.0	124.5	142.0	159.5	177.0	194.5	212.0
L2	88.5	106.0	123.5	141.0	158.5	176.0	193.5	211.0
L3	99.6	117.1	134.6	152.1	169.6	187.1	204.6	222.1

M4GB Series with regulator

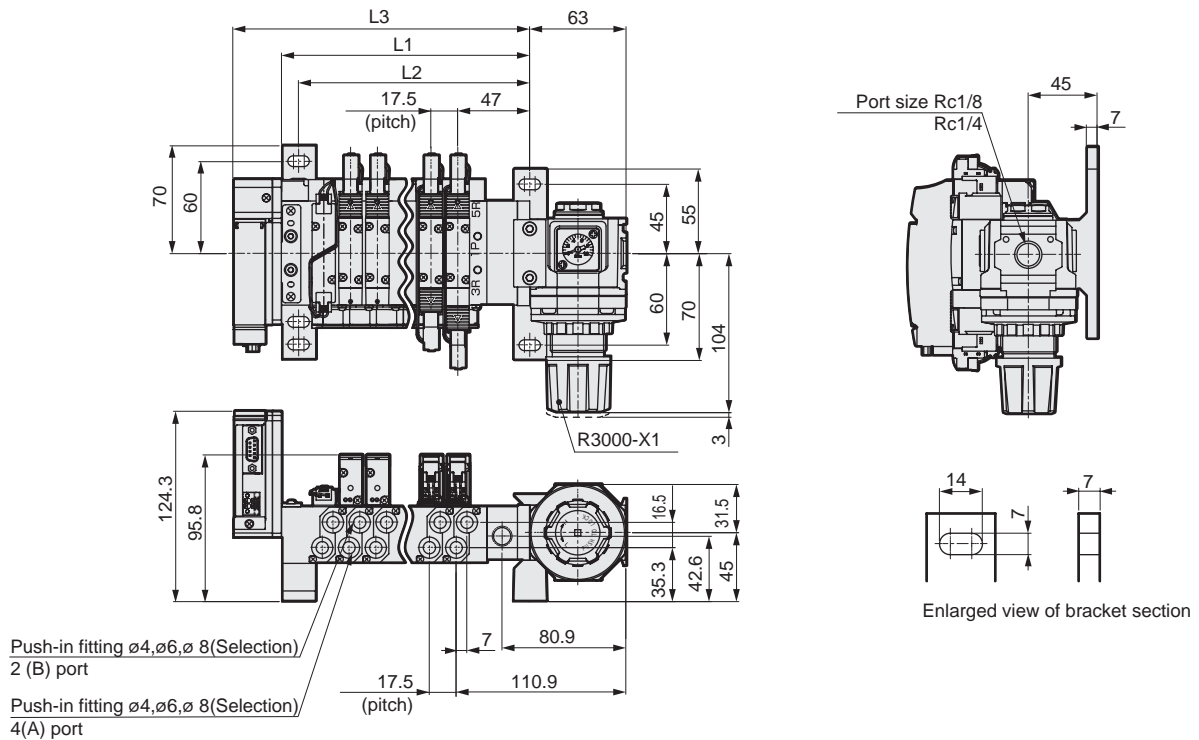
M4GB2 Dimensions

●Reduced wiring manifold (right-sided specifications)



Station No.	1	2	3	4	5	6	7	8
L1	89.5	107.0	124.5	142.0	159.5	177.0	194.5	212.0
L2	88.5	106.0	123.5	141.0	158.5	176.0	193.5	211.0
L3	99.6	117.1	134.6	152.1	169.6	187.1	204.6	222.1

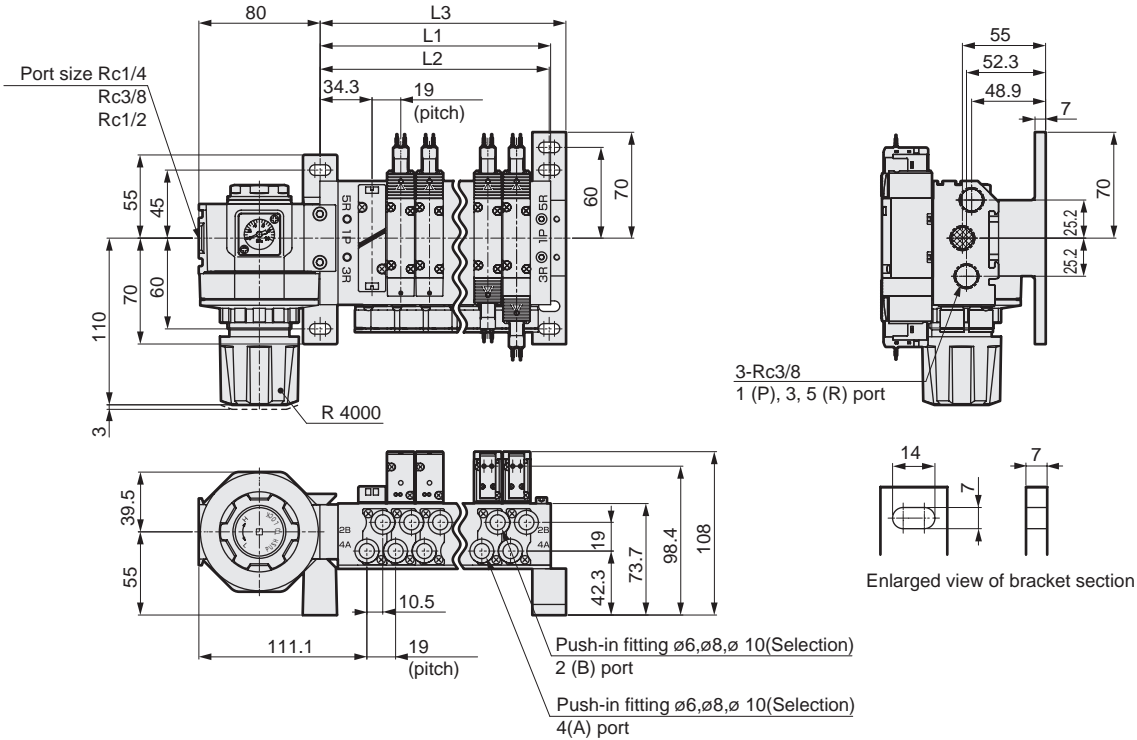
●Reduced wiring manifold (serial transmission)



Station No.	1	2	3	4	5	6	7	8
L1	74.5	92.0	109.5	127.0	144.5	162.0	179.5	197.0
L2	63.4	80.9	98.4	115.9	133.4	150.9	168.4	185.9
L3	106.3	123.8	141.3	158.8	176.3	193.8	211.3	228.8

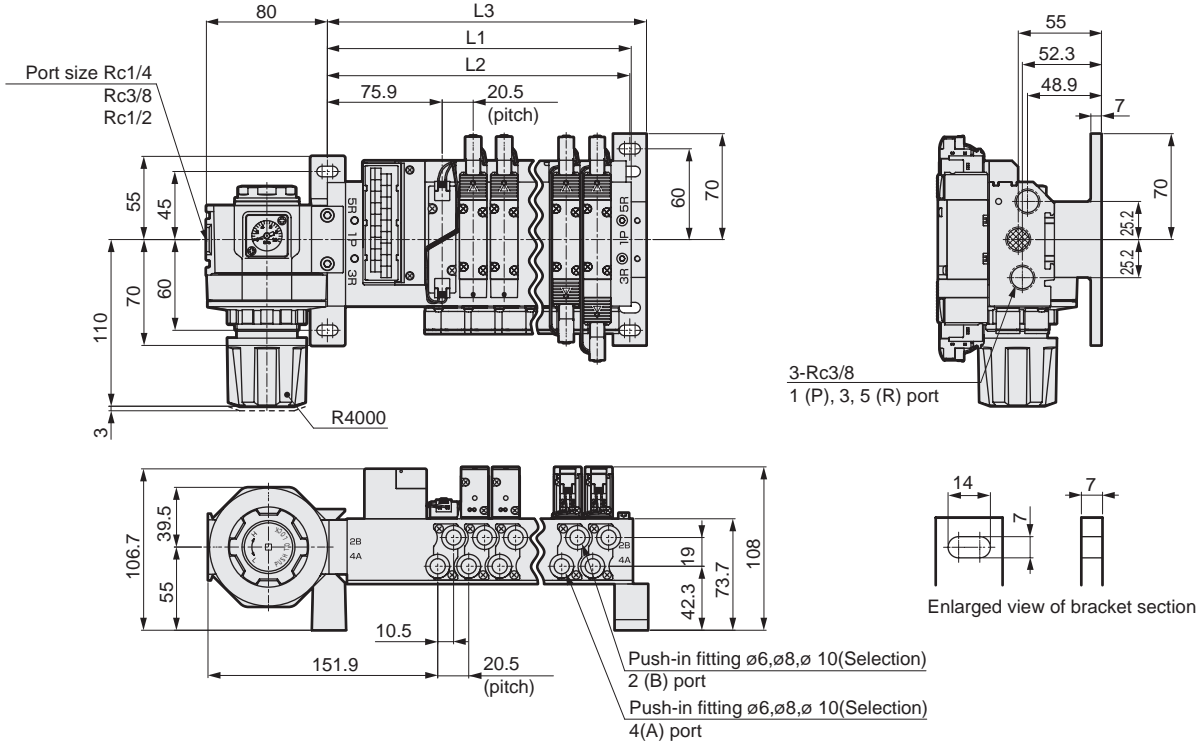
M4GB3 Dimensions

● Individual wiring manifold



Station No.	1	2	3	4	5	6	7	8
L1	57.0	76.0	95.0	114.0	133.0	152.0	171.0	190.0
L2	56.1	75.1	94.1	113.1	132.1	151.1	170.1	189.1
L3	67.1	86.1	105.1	124.1	143.1	162.1	181.1	200.1

● Reduced wiring manifold (left-sided specifications)

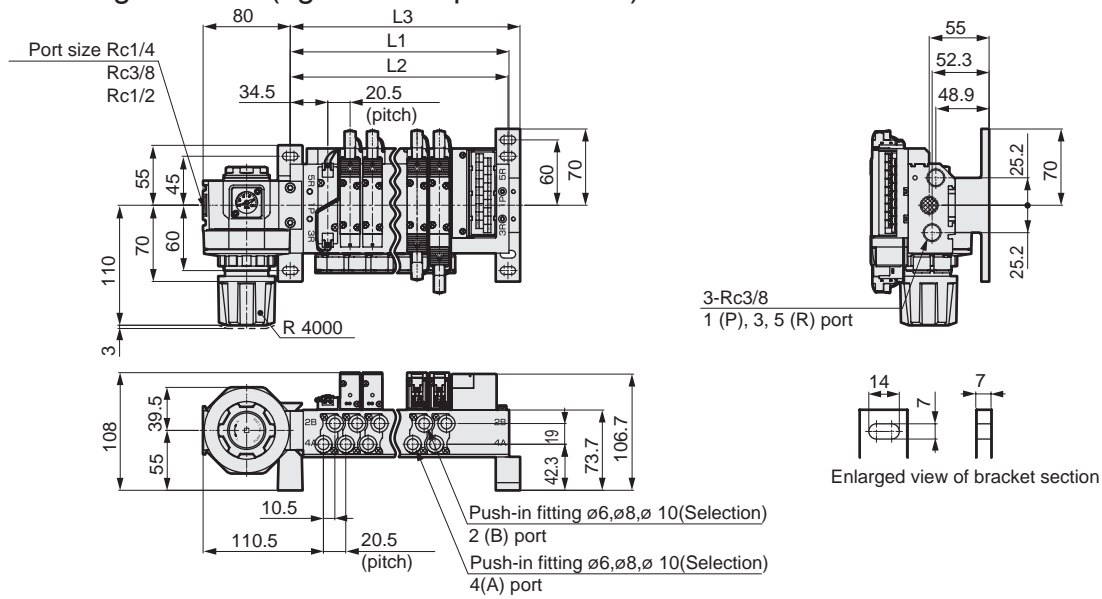


Station No.	1	2	3	4	5	6	7	8
L1	98.4	118.9	139.4	159.9	180.4	200.9	221.4	241.9
L2	97.5	118.0	138.5	159.0	179.5	200.0	220.5	241.0
L3	108.5	129.0	149.5	170.0	190.5	211.0	231.5	252.0

M4GB Series with regulator

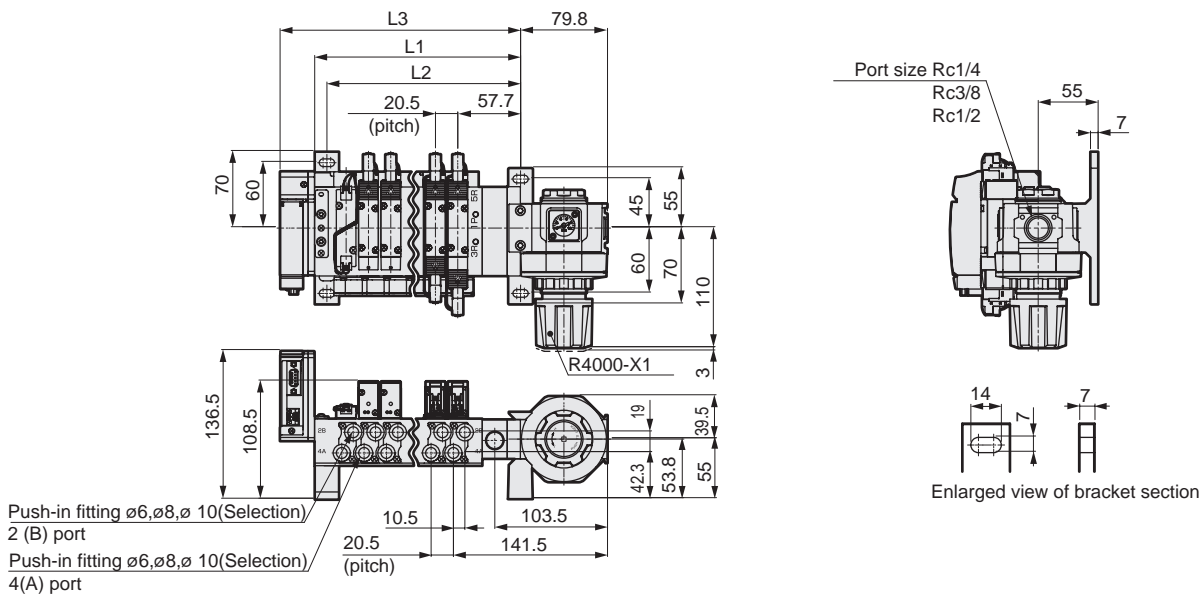
M4GB3 Dimensions

●Reduced wiring manifold (right-sided specifications)



Station No.	1	2	3	4	5	6	7	8
L1	98.4	118.9	139.4	159.9	180.4	200.9	221.4	241.9
L2	97.5	118.0	138.5	159.0	179.5	200.0	220.5	241.0
L3	108.5	129.0	149.5	170.0	190.5	211.0	231.5	252.0

●Reduced wiring manifold (serial transmission)



Station No.	1	2	3	4	5	6	7	8
L1	86.4	106.9	127.4	147.9	168.4	188.9	209.4	229.9
L2	75.2	95.7	116.2	136.7	157.2	177.7	198.2	218.7
L3	118.2	138.7	159.2	179.7	200.2	220.7	241.2	261.7

If the goods and/or their replicas, the technology and/or software found in this catalog are to be exported from Japan, Japanese laws require the exporter makes sure that they will never be used for the development and/or manufacture of weapons for mass destruction.

CKD Corporation

[Website]
<https://www.ckd.co.jp/en/>

Head Office / Plant
Tokyo Office

Osaka Office

2-250, Uji, Komaki, Aichi 485-8551
4F, Bunkahousou Media Plus, 1-31-1, Hamamatsu-cho,
Minato-ku, Tokyo 105-0013
6F, PMO EX Shin-Osaka, 4-2-10 Miyahara,
Yodogawa-ku, Osaka 532-0003

TEL(0568)77-1111 FAX(0568)77-1123
TEL(03)5402-3620 FAX(03)5402-0120
TEL(06)6152-9415 FAX(06)4866-5391