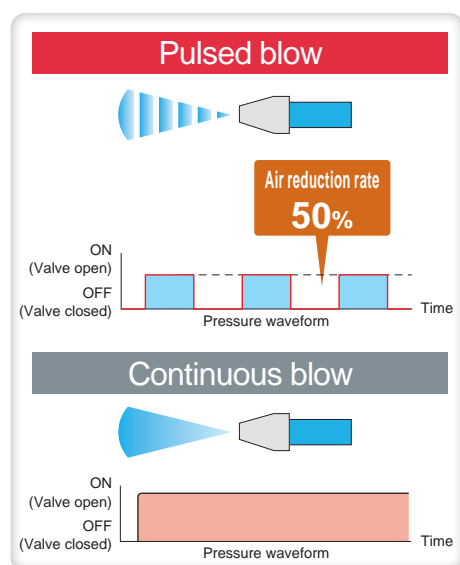


# No Electricity Needed Blow with Pulses, Reduce with Pulses.



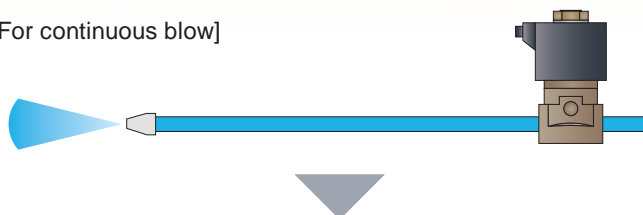
\* The port R plug is not included with product.



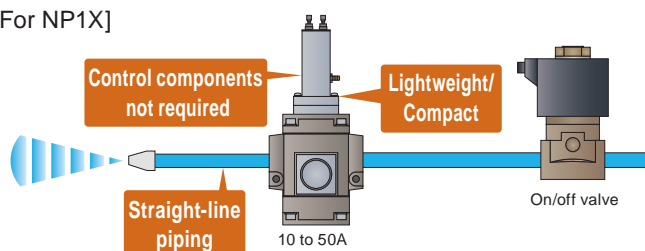
## Features

- **All air**  
Power supply and additional control components not required
- **Lightweight and Compact**  
Aluminum body keeps it light and compact
- **Variation**  
Bore size 10 to 50 A
- **Easy to Install**  
Existing equipment with straight-line piping. Easy retrofitting.
- **Durability (actual values)**  
Stable pulse waveform is maintained even after 100 million cycles

[For continuous blow]



[For NP1X]



Can be converted to Pulse Blowing Circuit by simply adding this product to the continuous blowing piping.

## Examples of applications

- **Draining**  
Air consumption reduced during intermittent air blow cleaning after machining or washing of automotive parts
- **Foreign matter removal**  
Frequent application of air to the workpiece increases efficiency

## Pulsed blow valve [NP1X, NAP1X Series]

# NP1X/NAP1X Series

## Specifications

Item	10A	15A	20A	25A	32A	40A	50A
Valve structure	Internal pilot /, external pilot with pulse adjustment						
Working fluid	Compressed air						
Working pressure	Internal pilot: 0.2 to 0.5						
MPa	External pilot: 0 to 0.8						
Proof pressure MPa	Body part: 1.2 / pulse timer part: 0.8						
Port size P, A ports	Rc3/8	Rc1/2	Rc3/4	Rc1	Rc11/4	Rc11/2	Rc2
Effective cross-sectional area mm <sup>2</sup>	75	90	175	200	600	630	660
Weight kg	0.7		1.5		4.3		4.2
Mounting orientation	Unrestricted						
Pilot fluid <sup>*1</sup>	Compressed air						
Pilot Working pressureMPa <sup>*1</sup>	0.35 to 0.5						
Adjustable frequency(Hz)	0.5 to 4 <sup>*2</sup>						

\*1: External pilot only

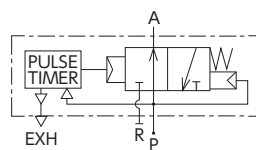
\*2: Consult with CKD for use outside the above ranges.

## Dimensions

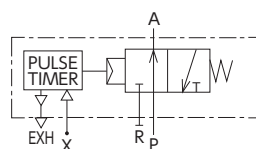
	Model No.	A	B	C	D	E	F	G	H	J
Internal pilot	NP1X-10AX164	Rc3/8	Rc1/2	63	51.5	205	45	52.5	53	-
	NP1X-15AX170	Rc1/2								
	NP1X-20AX171	Rc3/4	Rc1	100	78	223	63	74	85	-
	NP1X-25AX172	Rc1								
	NP1X-32AX173	Rc1 1/4	Rc2	140	112.5	256.5	95	113	118	-
	NP1X-40AX174	Rc1 1/2								
	NP1X-50AX175	Rc2								
External pilot	NAP1X-10AX181	Rc3/8	Rc1/2	63	51.5	205	45	52.5	53	40
	NAP1X-15AX182	Rc1/2								
	NAP1X-20AX183	Rc3/4	Rc1	100	78	223	63	74	85	36.5
	NAP1X-25AX176	Rc1/2								
	NAP1X-32AX184	Rc1 1/4	Rc2	140	112.5	278	95	113	118	53
	NAP1X-40AX185	Rc1 1/2								
	NAP1X-50AX186	Rc2								

## Air circuit diagram

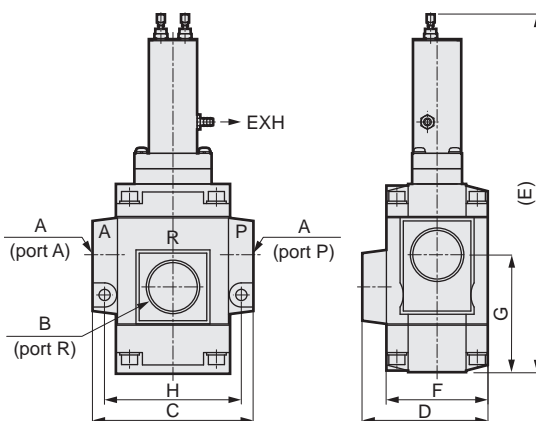
### Internal pilot NP1X Series



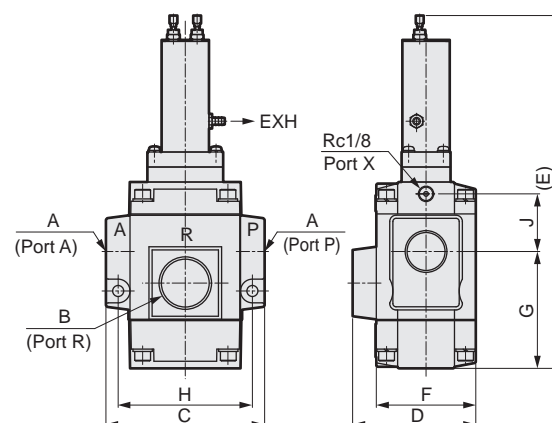
### External pilot NAP1X Series



### Internal pilot NP1X Series



### External pilot NAP1X Series



## Adjustment

Adjustment section	Dial	High ← → Low
	C1 (Adjusts OFF time)	ON:            OFF:            Short (H) ← OFF time → Long (L)
	C2 (Adjusts ON time)	ON:            OFF:            Short (H) ← ON time → Long (L)

If the goods and/or their replicas, the technology and/or software found in this catalog are to be exported from Japan, Japanese laws require the exporter makes sure that they will never be used for the development and/or manufacture of weapons for mass destruction.

# CKD Corporation

[Website]

<https://www.ckd.co.jp/en/>

Head Office · Plant  
Tokyo Office

Osaka Office

2-250, Oujii, Komaki, Aichi 485-8551  
4F, Bunkahousou Media Plus, 1-31-1, Hamamatsu-cho,  
Minato-ku, Tokyo 105-0013  
6F, PMO EX Shin-Osaka, 4-2-10 Miyahara,  
Yodogawa-ku, Osaka 532-0003

TEL(0568)77-1111 FAX(0568)77-1123  
TEL(03)5402-3620 FAX(03)5402-0120  
TEL(06)6396-9630 FAX(06)6396-9631