

# No Electricity Needed Blow with Pulses, Reduce with Pulses.



\* The port R plug is not included with product.

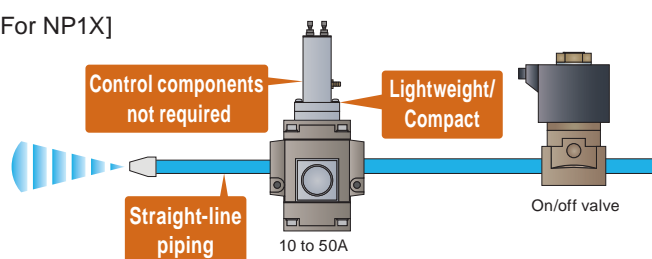
## Features

- **All air**  
Power supply and additional control components not required
- **Lightweight and compact**  
Aluminum body keeps it light and compact
- **Variation**  
Bore size 10 to 50 A
- **Easy to install**  
Existing equipment with straight-line piping. Easy retrofitting.
- **Durability (actual values)**  
Stable pulse waveform is maintained even after 100 million cycles

[For continuous blow]

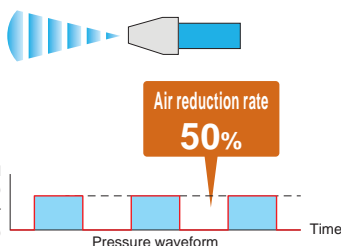


[For NP1X]

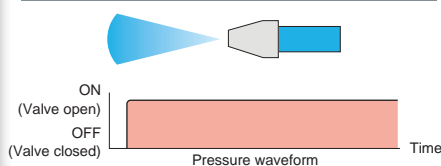


Can be converted to Pulse Blowing Circuit by simply adding this product to the continuous blowing piping.

### Pulsed blow



### Continuous blow



## Examples of applications

- **Draining**  
Air consumption reduced during intermittent air blow cleaning after machining or washing of automotive parts
- **Foreign matter removal**  
Frequent application of air to the workpiece increases efficiency

# Pulsed blow valve [NP1X, NAP1X Series]

# NP1X/NAP1X Series

## Specifications

Item	10A	15A	20A	25A	32A	40A	50A
Valve structure	Internal pilot /, external pilot with pulse adjustment						
Working fluid	Compressed air						
Working pressure MPa	Internal pilot: 0.2 to 0.5						
	External pilot: 0 to 0.8						
Proof pressure MPa	Body part: 1.2 / pulse timer part: 0.8						
Port size P, A ports	Rc3/8	Rc1/2	Rc3/4	Rc1	Rc1 1/4	Rc1 1/2	Rc2
Effective cross-sectional area mm <sup>2</sup>	75	90	175	200	600	630	660
Weight kg	0.7		1.5		4.3		4.2
Mounting orientation	Unrestricted						
Pilot fluid *1	Compressed air						
Pilot Working pressure MPa*1	0.35 to 0.5						

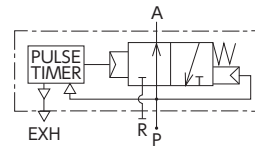
\*1: External pilot only

## Dimensions

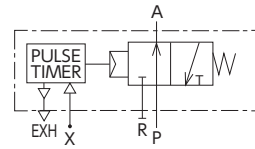
	Model No.	A	B	C	D	E	F	G	H	J
Internal pilot	NP1X-10AX164	Rc3/8	Rc1/2	63	51.5	205	45	52.5	53	-
	NP1X-15AX170	Rc1/2								
	NP1X-20AX171	Rc3/4	Rc1	100	78	223	63	74	85	-
	NP1X-25AX172	Rc1								
	NP1X-32AX173	Rc1 1/4	Rc2	140	112.5	256.5	95	113	118	-
	NP1X-40AX174	Rc1 1/2								
	NP1X-50AX175	Rc2								
External pilot	NAP1X-10AX181	Rc3/8	Rc1/2	63	51.5	205	45	52.5	53	40
	NAP1X-15AX182	Rc1/2								
	NAP1X-20AX183	Rc3/4	Rc1	100	78	223	63	74	85	36.5
	NAP1X-25AX176	Rc1/2								
	NAP1X-32AX184	Rc1 1/4	Rc2	140	112.5	278	95	113	118	53
	NAP1X-40AX185	Rc1 1/2								
	NAP1X-50AX186	Rc2								

## Air circuit diagram

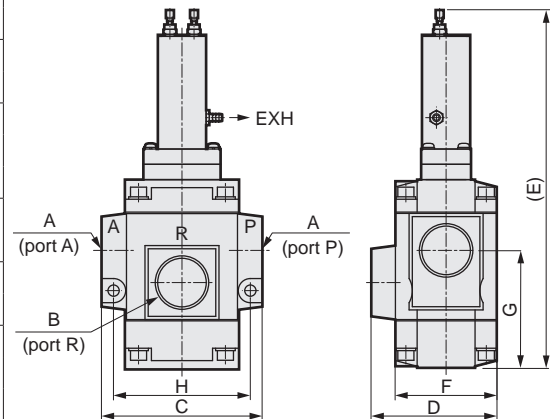
- Internal pilot NP1X Series



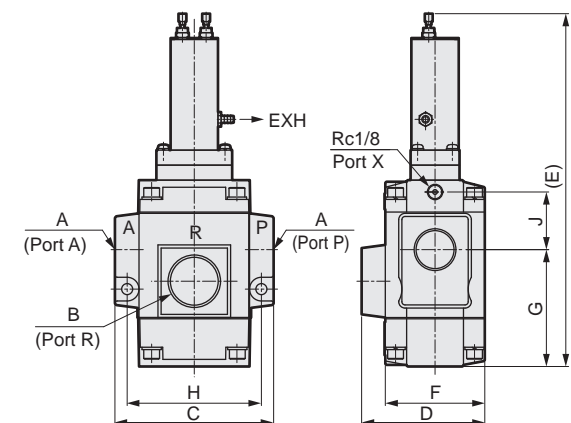
- External pilot NAP1X Series



- Internal pilot NP1X Series



- External pilot NAP1X Series



## Adjustment

Adjustment section	Dial	High ← → Low
	C1 (Adjust OFF time)	
	C2 (Adjust ON time)	

\*\* Knob adjustment method for continuous blow without pulse: Turn C1 to full H and C2 to full L.

If the goods and/or their replicas, the technology and/or software found in this catalog are to be exported from Japan, Japanese laws require the exporter makes sure that they will never be used for the development and/or manufacture of weapons for mass destruction.

# CKD Corporation

[Website]  
<https://www.ckd.co.jp/en/>

Head Office · Plant  
 Tokyo Office  
 Osaka Office

2-250, Uji, Komaki, Aichi 485-8551  
 4F, Bunkahousou Media Plus, 1-31-1, Hamamatsu-cho,  
 Minato-ku, Tokyo 105-0013  
 6F, PMO EX Shin-Osaka, 4-2-10 Miyahara,  
 Yodogawa-ku, Osaka 532-0003

TEL(0568)77-1111 FAX(0568)77-1123  
 TEL(03)5402-3620 FAX(03)5402-0120  
 TEL(06)6396-9630 FAX(06)6396-9631