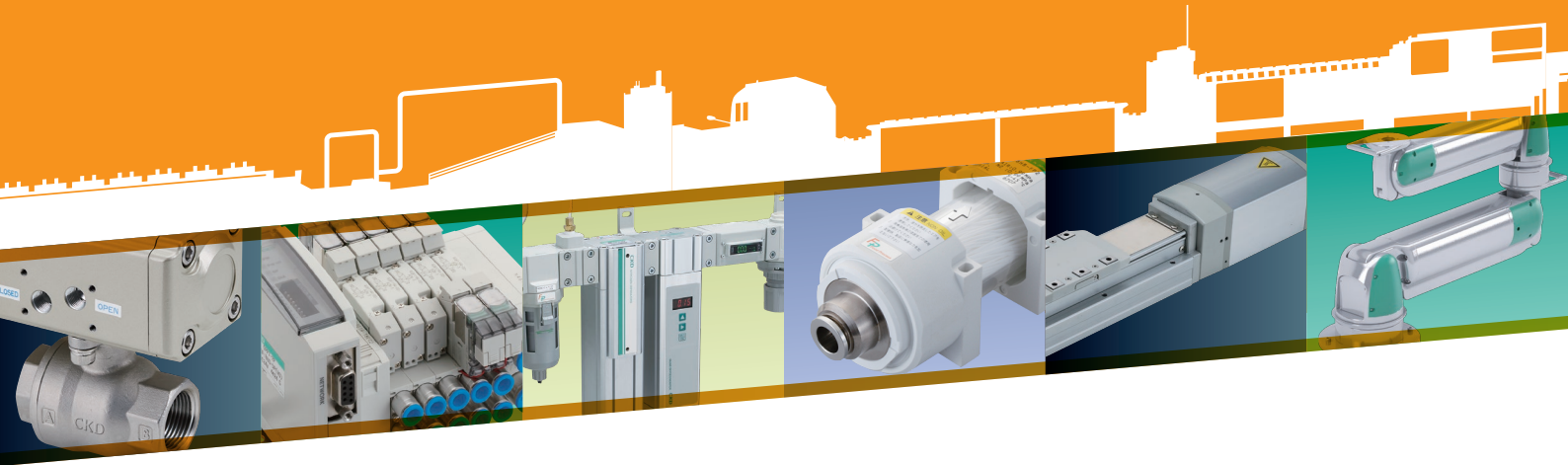




Equipment for Food manufacturing processes

FP Series



Giving shape to the needs of food manufacturing processes

Equipment for Food manufacturing processes FP Series



CKD Corporation

CC-1303A 5

Equipment for food manufacturing processes FP Series



Contributes to HACCP FSSC 22000 certification

A broad **standard lineup** ranging from air filters to actuators that can be used safely and securely in food manufacturing processes

Total support for food manufacturing with **total engineering capacity** in packaging machines as well as pneumatic, fluid control, and electric-driven products

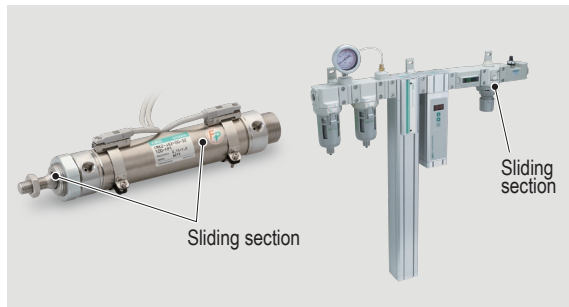
FP1 Series

Lubricant

Eliminates lubricant contamination concerns!

Food-grade (NSF H1) lubricants are used for flow paths and sliding parts.

*Materials and dimensions are the same as the standard products.



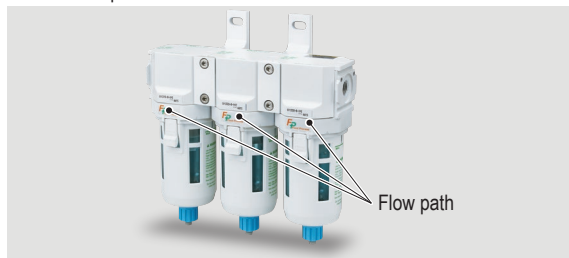
FP2 Series

Lubricant Material Assembly environment

Uses safe materials!

In addition to FP1, the flow path uses Food Sanitation Act* compliant materials (resin and rubber).

Materials (excluding the flow path) and dimensions are the same as the standard products.



FP3 Series

Lubricant Material Structure Assembly environment Shape

Pursuing further safety and security!

In addition to FP2, this product takes into account food production processes including lubrication, materials, and shape.



*Food Sanitation Act "Specifications and standards for foods, food additives, etc. (The Ministry of Health and Welfare Notification No. 34, 370)"

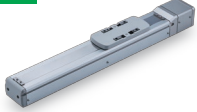


This logo represents our commitment to support food manufacturing processes with safe CKD products.

FP1

Avoid contamination from lubricants.
Food grade lubricant (NSF H1) used.

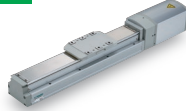
Electric EKS-L Series



Electric ETS/ETV Series



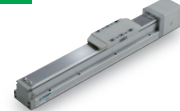
Electric EBS-M Series



Electric EBR-M Series



Electric EBS-L Series



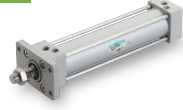
Electric EBR-L Series



Cylinder SCM Series



Cylinder SCG Series



Cylinder SCA2 Series



Cylinder SCS2 Series



Cylinder SSD2 Series



Cylinder STG-M Series



Cylinder SRL3 Series



Cylinder

FJ Series



Cylinder

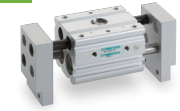
FH100 Series



Cylinder BHA/BHG Series



Cylinder HMF Series



Cylinder

FH500 Series



Cylinder CKG Series



Cylinder CKL2/CKLG2 Series



Pneumatic valves 4G Series



Pneumatic valves W4G*2 Series



F.R. C*020/
C*030/
C*040/
C*050/
C*060 Series



F.R. W1*00 to
W8*00 Series



F.R. F*000
M(X)*000 Series



F.R. R1*00 to
R8*00 Series



Pneumatic auxiliary FX Series



Pneumatic auxiliary P1100 to
P8100 Series



Pneumatic auxiliary V1000/
V3000/
V3010/
V6010 Series



Pneumatic auxiliary EVD Series



Pneumatic auxiliary GW/WZ Series



Pneumatic auxiliary SC3W Series



Pneumatic auxiliary DSC Series



Pneumatic auxiliary SCL2 Series



Pneumatic auxiliary DVL-S Series



Pneumatic auxiliary SC-M5 Series



Pneumatic auxiliary SC1 Series



Pneumatic auxiliary SMW/
SMW2 Series



Pneumatic auxiliary FPV Series



Pneumatic auxiliary 2QV/3QV Series



Vacuum system VSH/
VSC Series



Pneumatic auxiliary SU/SD Series



Pneumatic auxiliary NSU Series



Pneumatic auxiliary AF Series



Fluid control APK Series



Fluid control SAB Series



Fluid control NAP Series



FP2

Uses materials conforming to the Food Sanitation Act.

Fluid control EXA Series



Fluid control FWD Series



Fluid control USB/G Series



Fluid control AB31/
AB41 Series



Fluid control AG31/41/
33/43/
34/44 Series



Fluid control ADK11-Z Series



Fluid control LAD Series



Fluid control NAD
GNAD Series



Fluid control CHB/
CHG Series



Fluid control MXB/
MXG Series



Fluid control SPK Series



Fluid control MYB3 Series



Fluid control HB Series



Fluid control CCN Series



Pneumatic auxiliary NS Series



Pneumatic auxiliary PNA Series



Pneumatic auxiliary SFC/SFSSeries



Vacuum system VSPSeries



Equipment for food manufacturing processes FP series

Electric actuator

EBS-L/M EBR-L/M EKS-L ETS ECS ETV ECV Series

A wide range of variations for extensive applications

ROBODEX Pulse

With stepper motor

Compact & high rigidity (ball screw drive)

EBS-M Series



EBR-M Series



CC-Link

IO-Link

EtherCAT

Parallel IO

ROBODEX Std.

Motorless

Compact & high rigidity (ball screw drive)

EBS-L Series



EBR-L Series



EKS-L Series



Fast tact/high rigidity (ball screw drive)

Standard (ball screw drive)

ETS Series



ECS Series



Low dust specification

Standard (belt drive)

ETV Series



ECV Series



Low dust specification

Top motor manufacturers in the industry

List of motorless motor manufacturers

Supported servo motors Manufacturer list	EBS-L EBR-L	ETS/ECS/ ETV/ECV	EKS-L
Mitsubishi Electric Corporation	●	●	●
Delta Electronics Co., Ltd.	●	●	●
Sanyo Denki Co., Ltd.	●	●	●
YASKAWA Electric Corporation	●	●	●
Keyence Corporation	●	●	●
Panasonic Corporation	●	●	●
OMRON Corporation	●	●	●
Fuji Electric Co., Ltd.	●	●	●
FANUC CORPORATION	●	●	●
Bosch Rexroth AG	●	●	●
Rockwell Automation, Inc.	●	●	●
SIEMENS AG	●	●	●

Compatible stepping motor Manufacturer list	EBS-L EBR-L	ETS ECS
Oriental Motor Co., Ltd.	●	●
MinebeaMitsumi Incorporated	●	●
Dyadic Systems Co.,Ltd.	●	●

*For models and capacity, refer to the Electric Actuator Motorless General Catalog (CB-055A).

Anti-bacterial/bacteria-removing filter

SFC/SFS Series

The point is "anti-bacterial/bacteria-removing" compressed air

Proprietary anti-bacterial filter

Non-woven fabric filter element that uses a silver-based anti-bacterial agent

Anti-bacterial effect

Proprietary bacteria-removing filter

Removal rate 99.999999% hollow fiber membrane

Bacteria removing effect

Antibacterial activity value **4** or more

Bacteria trapping performance **LRV8** or more.

Anti-bacterial pre-filter

Anti-bacterial high performance filter

Anti-bacterial filter



FDA
Materials compatible with FDA Fluid passage section Resin/rubber

Antibacterial activity value **4** or more

Bacteria trapping performance **LRV8** or more

Material compatible with Food Sanitation Act Fluid passage section Resin/rubber

NSF H1
grease for foodstuffs used

Exterior parts use **anti-bacterial** materials

Maintenance

Odor removal filter added

Uses fiber activated carbon with a large adsorption area. It realizes high suction performance and long life.

Push ring employed in SUS

Risk of contamination is reduced, and it can be installed safely near the point of use.

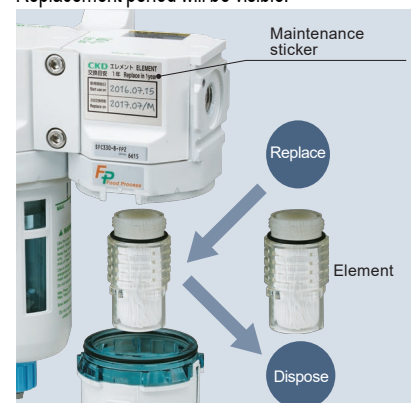
Elements are replaceable

Elements are easy to replace.

Maintenance label included as standard

* Included with product.

Replacement period will be visible.



* Antibacterial Activity Value and Bacteria Trapping Performance Values are actual values under CKD's prescribed conditions.

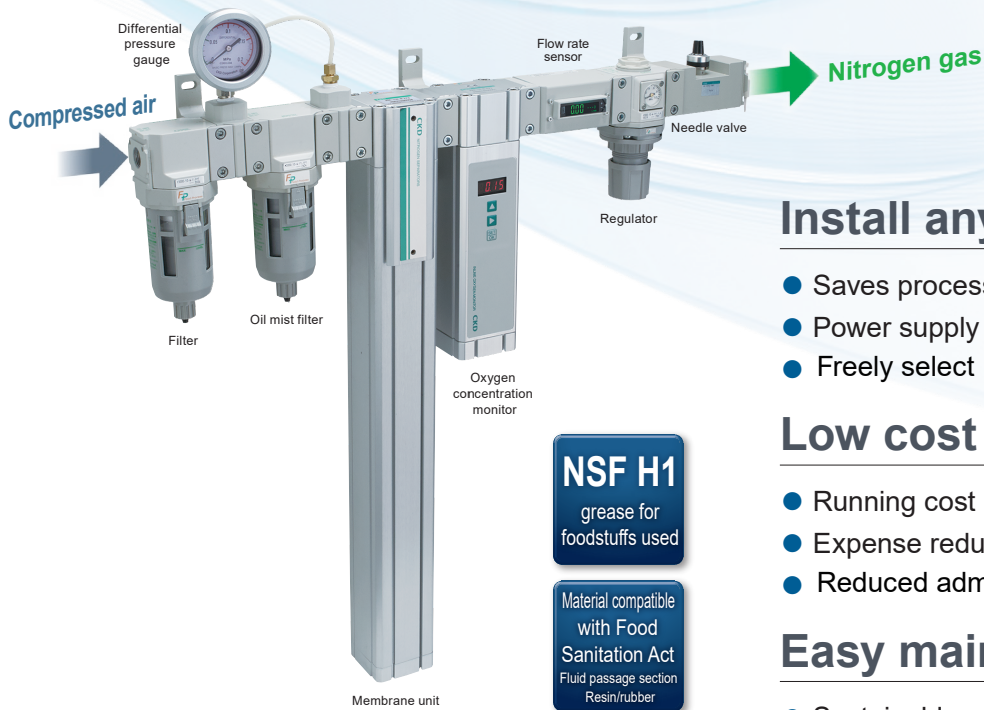
Element replacement period notification email

If you have your user registration upon delivery of the product, you will receive an email informing you of the element replacement period.

Nitrogen Gas Extraction Unit

NS Series

Nitrogen gas is easily extracted from compressed air.



Install anywhere

- Saves processes, piping, and space
- Power supply not required
- Freely select

Low cost

- Running cost reduction
- Expense reduction
- Reduced administrative processes

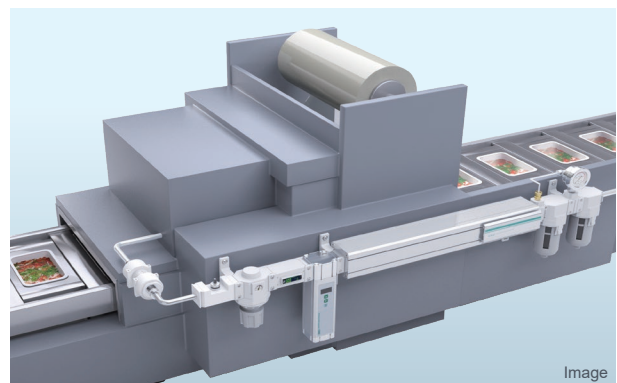
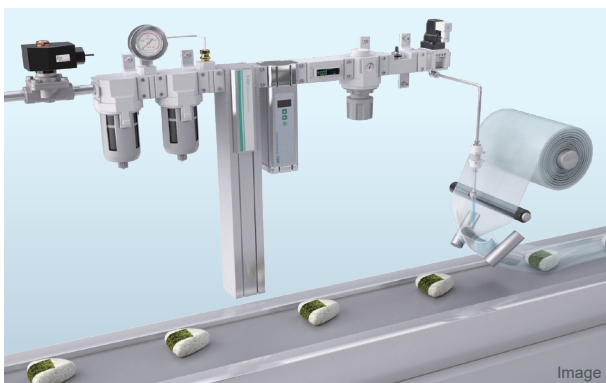
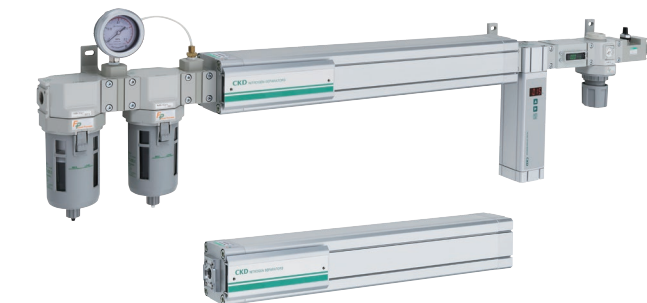
Easy maintenance

- Sustainable reliability
- High Pressure Gas Safety Act not applicable

Horizontal mounting



- Installation in dead spaces
- Built into equipment



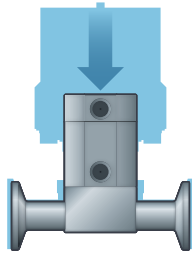
Poppet
Diaphragm valve

SPD Series

Diaphragm valve designed to be sanitary and easy to use

Achieves high cleanliness, durability, and maintainability. Ideal for the food filling processes.

Lightweight /compact



Height
35%
reduced*

*8A size

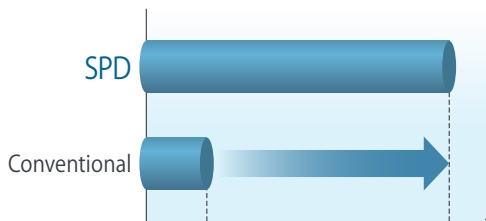
Weight
20%
reduced*



8A

15A

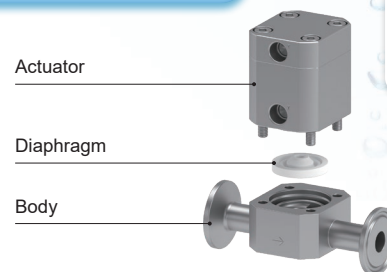
Durability



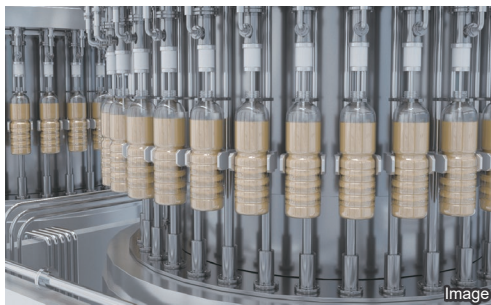
Durability
5x
or more

Maintainability

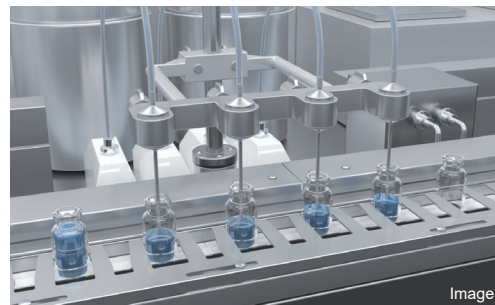
Diaphragm
Easily
replaced



* CKD test conditions.



Image



Image

Check valve
(Nozzle)

CCN Series

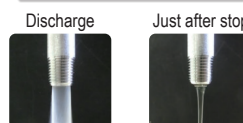
COMING SOON

Liquids stop instantly to prevent drippings

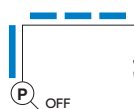
Contributes to improved workability
and faster tact times.



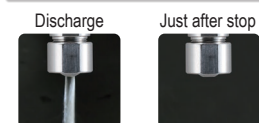
Without check valve



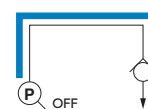
Liquid continues to drip

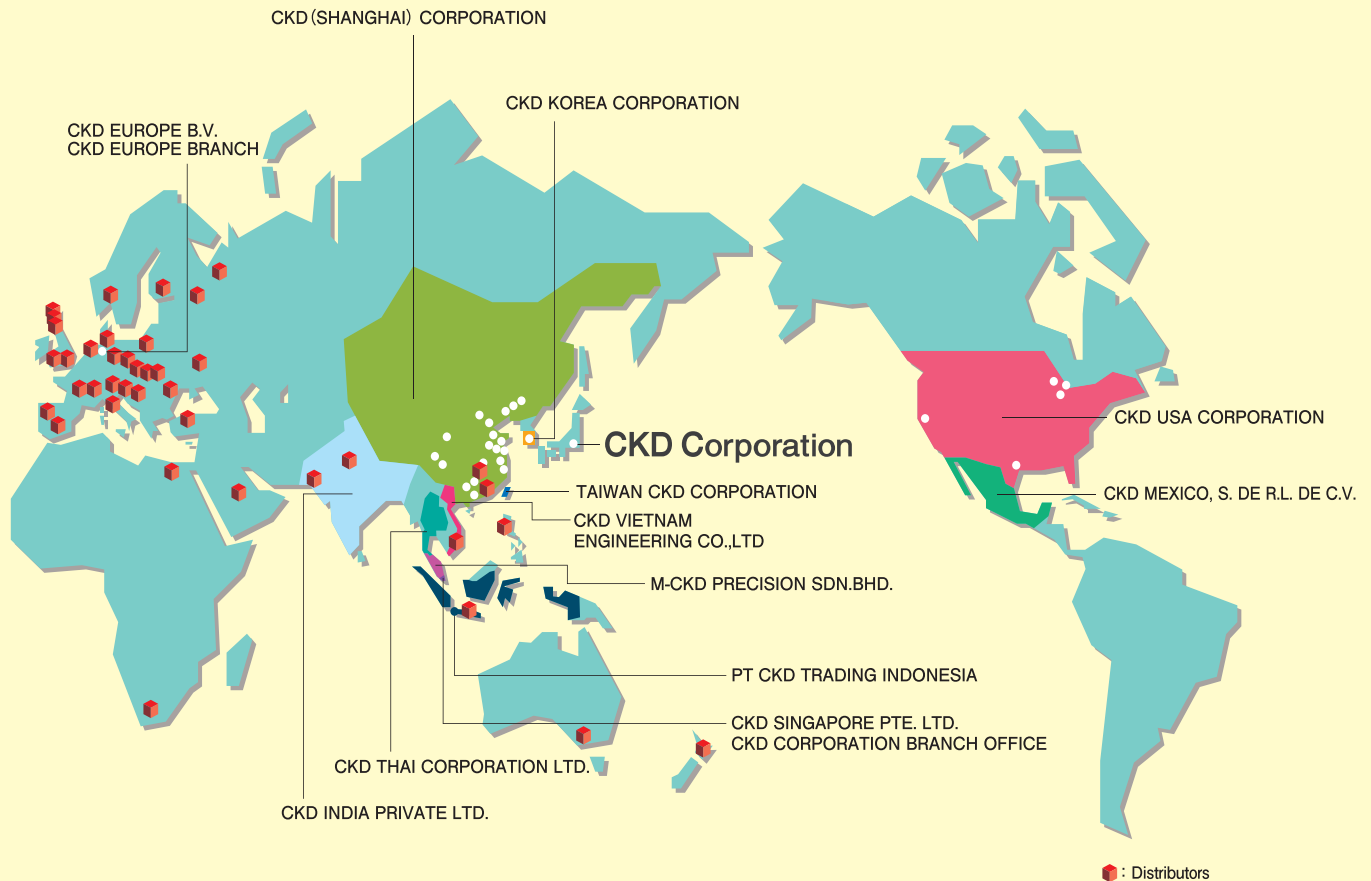


Check valve with nozzle



Check valve prevents liquid dripping
Discharged by holding liquid in the pipe
Improved responsivity as well





CKD Corporation

Website <https://www.ckd.co.jp/>

ASIA

喜開理(上海)機器有限公司

CKD(SHANGHAI)CORPORATION

- 營業部 / 上海浦西事務所 (SALES HEADQUARTERS / SHANGHAI PUXI OFFICE)
Room 601, 6th Floor, Yuanzhongkeyan Building, No. 1905 Hongmei Road, Xinhui District, Shanghai 200233, China
PHONE +86-21-61911888 FAX +86-21-60905356
- 上海浦東事務所 (SHANGHAI PUDONG OFFICE)
- 寧波事務所 (NINGBO OFFICE)
- 杭州事務所 (HANGZHOU OFFICE)
- 無錫事務所 (WUXI OFFICE)
- 昆山事務所 (KUNSHAN OFFICE)
- 蘇州事務所 (SUZHOU OFFICE)
- 南京事務所 (NANJING OFFICE)
- 合肥事務所 (HEFEI OFFICE)
- 成都事務所 (CHENGDU OFFICE)
- 武漢事務所 (WUHAN OFFICE)
- 鄭州事務所 (ZHENGZHOU OFFICE)
- 長沙事務所 (CHANGSHA OFFICE)
- 重慶事務所 (CHONGQING OFFICE)
- 西安事務所 (XI'AN OFFICE)
- 廣州事務所 (GUANGZHOU OFFICE)
- 中山事務所 (ZHONGSHAN OFFICE)
- 深圳西事務所 (WEST SHENZHEN OFFICE)
- 深圳東事務所 (EAST SHENZHEN OFFICE)
- 東莞事務所 (DONGGUAN OFFICE)
- 廈門事務所 (XIAMEN OFFICE)
- 福州事務所 (FUZHOU OFFICE)
- 瀋陽事務所 (SHENYANG OFFICE)
- 大連事務所 (DALIAN OFFICE)
- 長春事務所 (CHANGCHUN OFFICE)
- 北京事務所 (BEIJING OFFICE)
- 天津事務所 (TIANJIN OFFICE)
- 青島事務所 (QINGDAO OFFICE)
- 濰坊事務所 (WEIFANG OFFICE)
- 濟南事務所 (JINAN OFFICE)
- 烟台事務所 (YANTAI OFFICE)

CKD INDIA PRIVATE LTD.

- HEADQUARTERS
Unit No. 607, 6th Floor, Welldone Tech Park, Sector 48, Sohna Road, Gurgaon-122018, Haryana, India
PHONE +91-124-418-8212 FAX +91-(0) 124-418-8216
- BANGALORE OFFICE
- PUNE OFFICE

PT CKD TRADING INDONESIA

- HEAD OFFICE
Menara Bidakara 2, 18th Floor, Jl. Jend. Gatot Subroto Kav. 71-73, Pancoran, Jakarta 12870, Indonesia
PHONE +62-21-2938-6601 FAX +62-21-2906-9470
- BEKASI OFFICE
- KARAWANG OFFICE
- SURABAYA OFFICE

- 2-250 Ouji, Komaki City, Aichi 485-8551, Japan
- PHONE +81-568-74-1338 FAX +81-568-77-3461

CKD KOREA CORPORATION

- HEADQUARTERS
(3rd Floor), 44, Sinsu-ro, Mapo-gu, Seoul 04088, Korea
PHONE +82-2-783-5201 ~ 5203 FAX +82-2-783-5204
- 水原營業所 (SUWON OFFICE)
- 天安營業所 (CHEONAN OFFICE)
- 蔚山營業所 (ULSAN OFFICE)

M-CKD PRECISION SDN.BHD.

- HEAD OFFICE
Lot No.6, Jalan Modal 23/2, Seksyen 23, Kawasan MIEL, Fasa 8, 40300 Shah Alam, Selangor Darul Ehsan, Malaysia
PHONE +60-3-5541-1468 FAX +60-3-5541-1533
- JOHOR BAHRU BRANCH OFFICE
- PENANG BRANCH OFFICE

CKD SINGAPORE PTE. LTD.

- No.33 Tannery Lane #04-01 Hoesteel Industrial Building, Singapore 347789, Singapore
PHONE +65-67442623 FAX +65-67442486

CKD CORPORATION BRANCH OFFICE

- No.33 Tannery Lane #04-01 Hoesteel Industrial Building, Singapore 347789, Singapore
PHONE +65-67447260 FAX +65-68421022

CKD THAI CORPORATION LTD.

- HEADQUARTERS
19th Floor, Smooth Life Tower, 44 North Sathorn Road, Silom, Bangkok, Bangkok 10500, Thailand
PHONE +66-2-267-6300 FAX +66-2-267-6304-5
- RAYONG OFFICE
- NAVANAKORN OFFICE
- EASTERN SEABOARD OFFICE
- LAMPHUN OFFICE
- KORAT OFFICE
- AMATANAKORN OFFICE
- PRACHINBURI OFFICE
- SARABURI OFFICE

台灣喜開理股份有限公司

TAIWAN CKD CORPORATION

- HEADQUARTERS
16F-3, No. 7, Sec. 3, New Taipei Blvd., Xinzhuang Dist., New Taipei City 242, Taiwan
PHONE +886-2-8522-8198 FAX +886-2-8522-8128
- 新竹營業所 (HSINCHU OFFICE)
- 台中營業所 (TAICHUNG OFFICE)
- 台南營業所 (TAINAN OFFICE)
- 高雄營業所 (KAOHSIUNG OFFICE)

CKD VIETNAM ENGINEERING CO.,LTD.

- HEADQUARTERS
18th Floor, CMC Tower, Duy Tan Street, Cau Hai District, Hanoi, Vietnam
PHONE +84-24-3795-7631 FAX +84-24-3795-7637
- HO CHI MINH OFFICE

EUROPE

CKD EUROPE B.V.

- HEADQUARTERS
Beechavenue 125A, 1119 RB Schiphol-Rijk, the Netherlands
PHONE +31-23-554-1490
- CKD EUROPE GERMANY OFFICE
- CKD EUROPE UK
- CKD EUROPE CZECH O.Z.

CKD CORPORATION EUROPE BRANCH

- Beechavenue 125A, 1119 RB Schiphol-Rijk, the Netherlands
PHONE +31-23-554-1490

NORTH AMERICA & LATIN AMERICA

CKD MEXICO, S. DE R.L. DE C.V.

- Cerrada la Noria No. 200 Int. A-01, Querétaro Park II, Parque Industrial Querétaro, Santa Rosa Jáuregui, Querétaro, C.P. 76220, México
PHONE +52-442-161-0624

CKD USA CORPORATION

- HEADQUARTERS
1605 Penny Lane, Schaumburg, IL 60173, USA
PHONE +1-847-648-4400 FAX +1-847-565-4923
- LEXINGTON OFFICE
- SAN ANTONIO OFFICE
- SAN JOSE OFFICE/ TECHNICAL CENTER
- DETROIT OFFICE
- BOSTON OFFICE

The goods and/or their replicas, the technology and/or software found in this catalog are subject to complementary export regulations by Foreign Exchange and Foreign Trade Law of Japan.

If the goods and/or their replicas, the technology and/or software found in this catalog are to be exported from Japan, Japanese laws require the exporter makes sure that they will never be used for the development and/or manufacture of weapons for mass destruction.