





ROBODEX

Inheritance and Evolution New Options and Possibilities



Slider/Guide integrated rod
EBS-M/G, EBR-M/G Series

Controller
ECR, ECG-A/B Series



SCARA Robot
KHL/KHE Series



Orthogonal 4-axis actuator
KBX Series

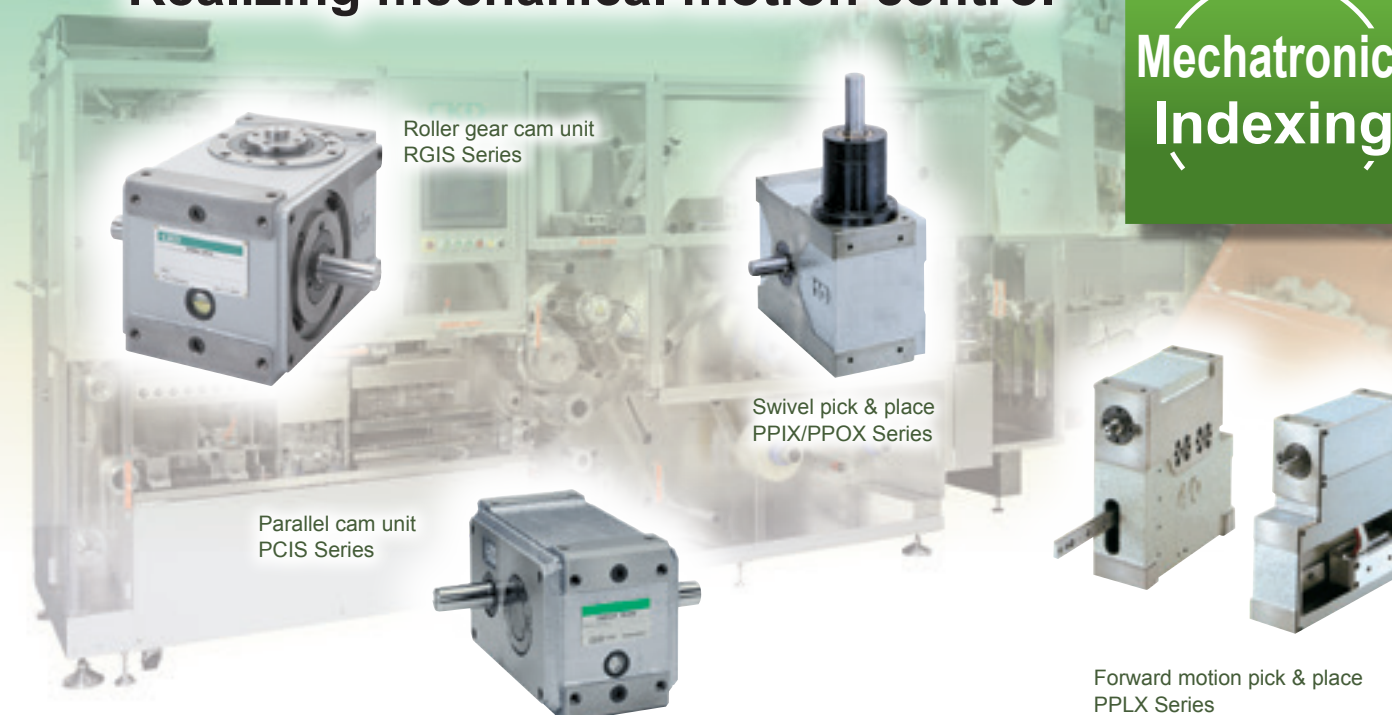


Table type/2-Finger Gripper/Rotary
FLCR / FLSH / FFLD / FGRC Series



Motorless

Realizing mechanical motion control



Roller gear cam unit
RGIS Series

Parallel cam unit
PCIS Series

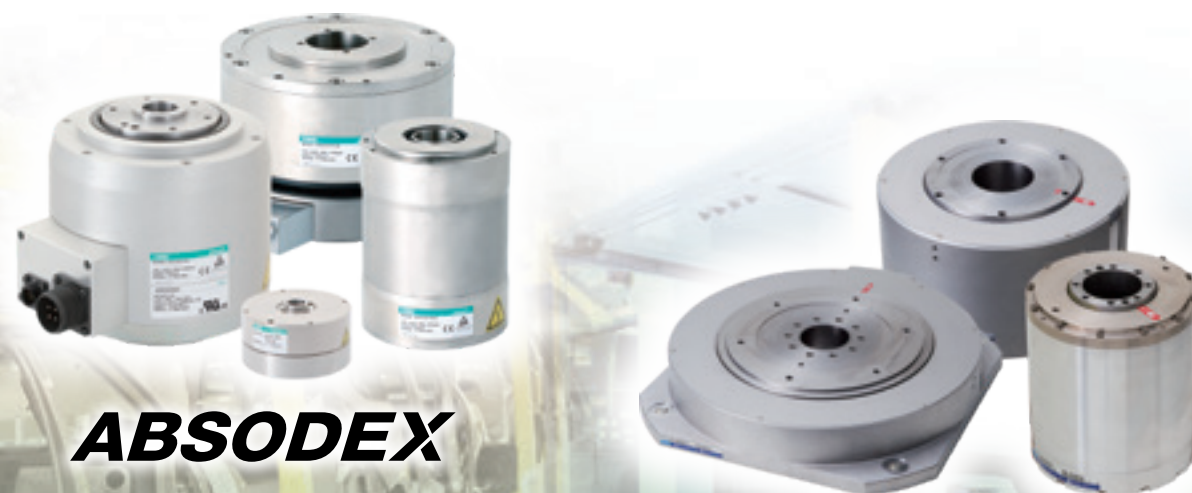
Swivel pick & place
PPIX/PPOX Series

Forward motion pick & place
PPLX Series

**Mechatronics
Indexing**

Proposing new processes

Supports various handling, positioning, and precision processes.



ABSODEX

**DISC
Servo Motor**



Air-Gyro
LBC-R Series

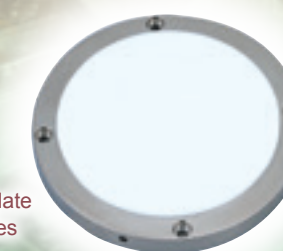
Fine buffer
FBU2 Series



Floating transport
GFM Series



Air bearing
LBC Series



Suction plate
PVP Series



From assembly inspection equipment
to ultra-precision stages

For precision assembly, transport,
floating, and suction



Compact & highly rigid with an integrated outer rail guide

Catalog CC-1422A

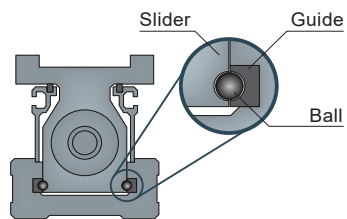
Slider EBS-M/G Series

- Ball screw drive, 3 sizes
- Equipped as standard with a battery-less absolute encoder
- Max. load capacity: 80kg (horizontal)
- Max. stroke: 1100mm
- Max. speed: 1100 mm/s



Uses a wide guide integrated with the body
Realizes both compact and high rigidity

EBS sectional view

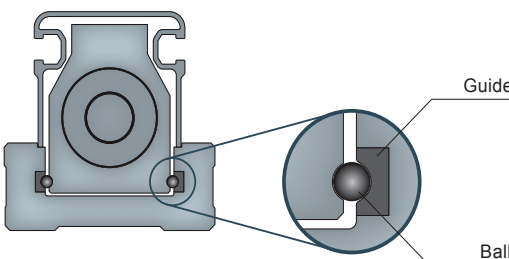


Rod with built-in guide EBR-M/G Series

- Ball screw drive, 3 sizes
- Equipped with a battery-less absolute encoder
- Max. load capacity: 80kg (horizontal)
- Max. stroke: 700mm
- Max. speed: 900 mm/s



EBR sectional view



		ERL2-60 (conventional product)	EBS-05
Body width		64 mm	54 mm
Static allowable moment	MP	25.7 N·m	103 N·m
	MY	25.7 N·m	103 N·m
	MR	58 N·m	144 N·m

Common controller for convenience

Catalog CC-1422A

Catalog CC-1444A

Controller ECR Series

- Applicable models



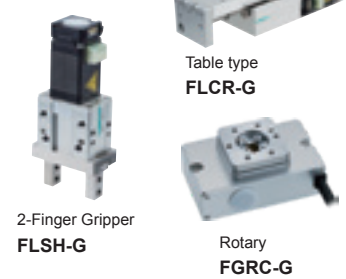
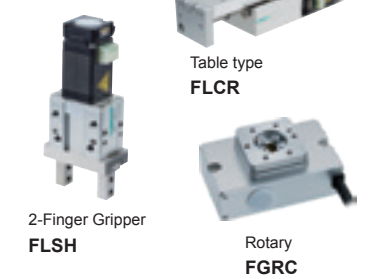
Controller ECG-A Series

- Applicable models



Controller ECG-B Series

- Applicable models



Connects with multiple motor sizes to help reduce inventory

ECR compatible interface

IO-Link EtherCAT

CC-Link Parallel IO

ECG-A/B compatible interface

IO-Link EtherCAT Parallel IO

CC-Link EtherNet/IP

Compatible & Equivalent capabilities with Air Components

Catalog CC-1444A

2-Finger Gripper FLSH Series

- Sliding screw drive
- 3 sizes
- Finger position manual adjustment
- Self-lock mechanism
- Connect with controller ECG with G option



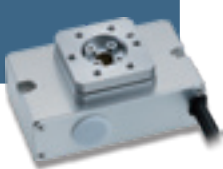
Table FLCR Series

- Ball screw + belt drive
- 3 sizes
- Built-in motor saves space
- Connect with controller ECG with G option



Rotary FGRC Series

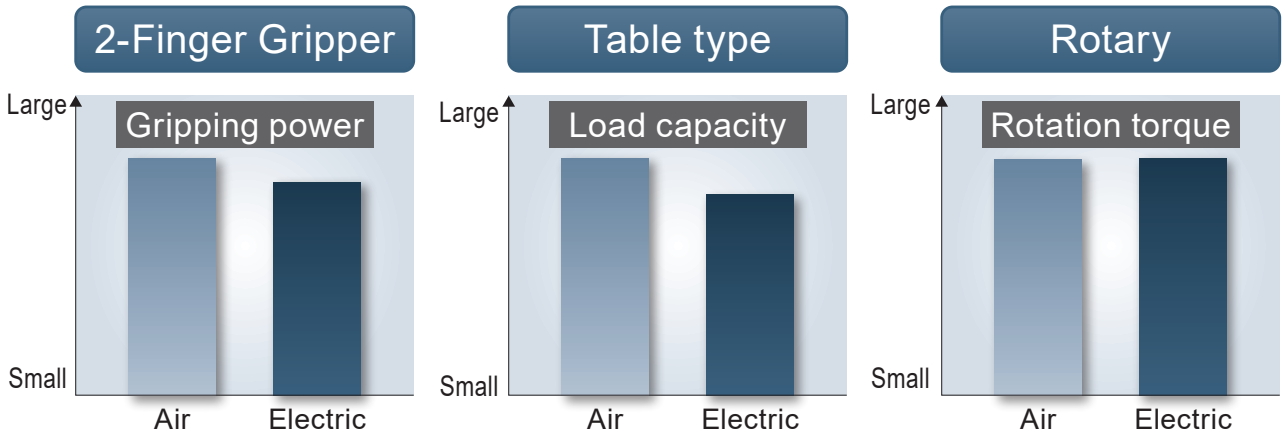
- Worm gear + belt drive
- 3 sizes
- Table position manual adjustment
- Self-lock mechanism
- Connect with controller ECG with G option



Maintenance parts
Reduced

Maintenance parts
Reduced
Installation space
Up to 35% less!

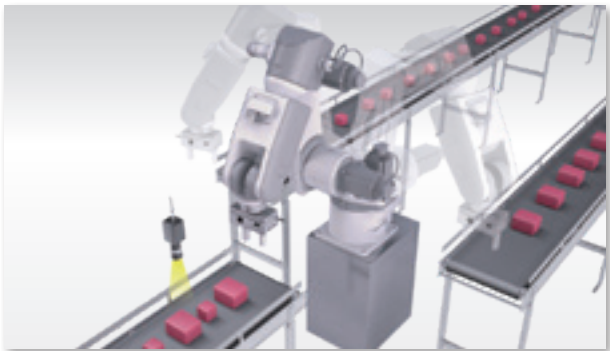
Equivalent capacity to air Component



*At air pressure of 0.45 MPa. Comparison with the same size.

2-Finger Gripper FFLD Series

- 3 sizes
- Controller integrated
- 1 cable
- Max. stroke length 80mm (one side)
- Max. gripping power 500N (one side)
- IO-Link interface

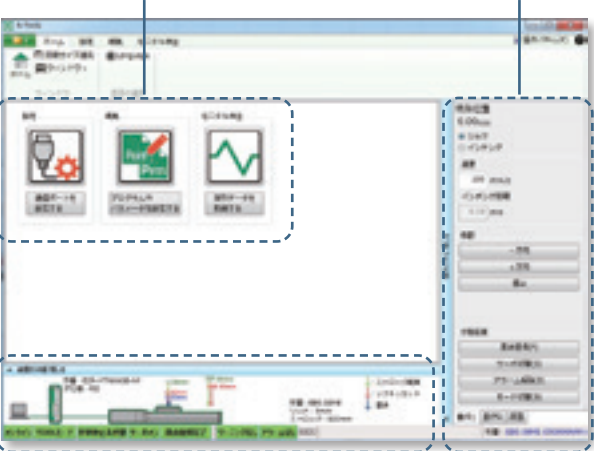


Setting software S-Tools

- ECG, ECR, FFLD compatible
- Easy settings free of charge on HP

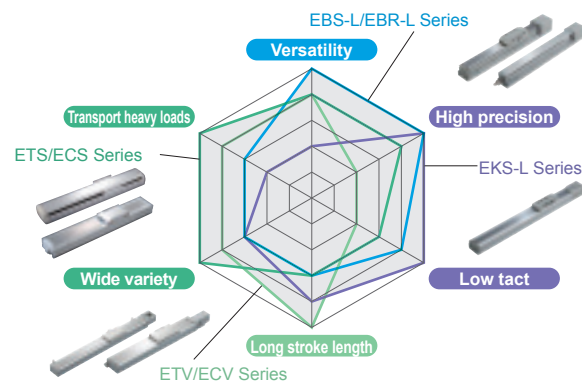
Large icons for intuitive operation

Confirm status on one screen



Confirm actuator status at a glance

Operation panel makes checking operation easy



Supported servo motors

Manufacturer list	EBS-L EBR-L	ETS/ECS ETV/ECV	EKS-L
Mitsubishi Electric Corp	●	●	●
Delta Electronics Co., Ltd.	●	●	●
Sanyo Denki Co., Ltd.	●	●	●
YASKAWA Electric Corp	●	●	●
Keyence Corporation	●	●	●
Panasonic Corporation	●	●	●
OMRON Corporation	●	●	●
Fuji Electric Co., Ltd.	●	●	●
FANUC CORPORATION	●	●	●
DENSO WAVE INC	●	●	●
Bosch Rexroth AG	●	●	●
Rockwell Automation, Inc.	●	●	●
SIEMENS AG	●	●	●



Supported stepping motor Manufacturer list

	EBS-L EBR-L	ETS ECS
Oriental Motor Co., Ltd.	●	●
MinebeaMitsumi Inc	●	●
Dyadic Systems Co., Ltd.	●	●

* Refer to the pages of each model for details on compatible models and capacity.

*1 Only metal stopper (ETS-X) is available.

Slider EBS-L Series

- Utilizes outer rail guide
- 4 sizes
- NEW** Servo motor 50 to 400W supported
- NEW** Supports □42 to □60 stepper motors
- Max. load capacity: 110kg (horizontal)
- Max. stroke: 1250mm



Slider ETS Series

- 8 sizes
- Servo motor 50 to 750W supported
- NEW** Supports □42 to □60 stepper motors
- Max. load capacity: 150kg (horizontal)
- Max. stroke: 1500mm



Slider EKS-L Series

- Utilizes iron base outer rail guide
- 5 sizes
- Servo motor 50 to 750W supported
- Max. workload: 118.5kg (horizontal)
- Max. stroke length: 1500mm



* Max. load capacity at acceleration of 0.5 G.

Slider ETV Series

- 6 sizes
- Servo motor 100 to 750W supported
- Max. load capacity: 85kg (horizontal)
- Max. stroke: 3500mm



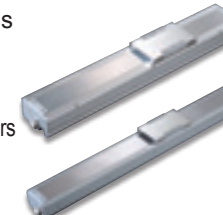
Rod EBR-L Series

- Utilizes outer rail guide
- 4 sizes
- NEW** Servo motor 50 to 400W supported
- NEW** Supports □42 to □60 stepper motors
- Max. load capacity: 110kg (horizontal)
- Max. stroke: 800mm



Slider (low dust) ECS Series

- Full cover low dust specifications
- 7 sizes
- Servo motor 100 to 750W supported
- NEW** Supports □42 to □60 stepper motors
- Max. load capacity: 150kg (horizontal)
- Max. stroke: 1500mm



Electric shuttle mover

ESM Series

- 3-dimensional P&P system
- Belt drive
- Various motors can be mounted (motorless)



3-dimensional transport between equipment



Long stroke with a max. length of 20 m

Slider (low dust) ECV Series

- Full cover low dust specifications
- 6 sizes
- Servo motor 100 to 750W supported
- Max. load capacity: 85kg (horizontal)
- Max. stroke: 3500mm

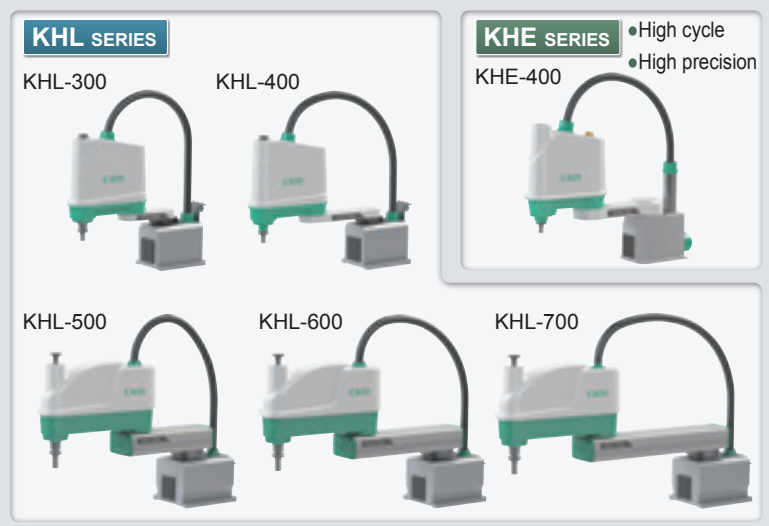


Servo motor drive for a wide range of applications

Horizontal articulated robot standard KHL / High precision KHE Series

- Compact and high operating performance
- Ideal for light press fitting and screw tightening
- Easy-to-use personal computer software
- Can be connected to image processing systems of various companies
- Compatible with all types of networks

Ethernet / / / /



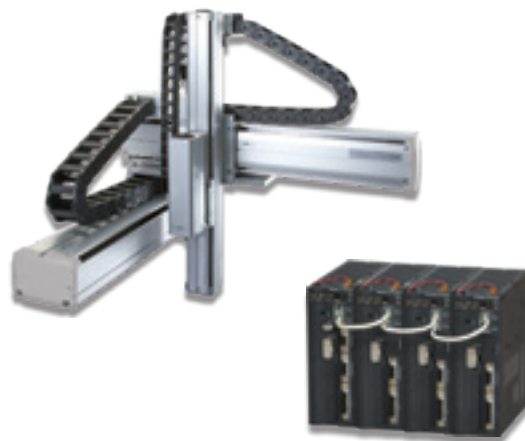
*Japan only release

Combination method from single axis to up to 4 axes

Electric actuator KBX Series

- All models are absolute types
- Servo motor: 50 to 750W
- Ball screw drive, 6 sizes, max. stroke: 1700mm, max. load capacity: 250kg
- Belt drive, 4 sizes, max. stroke: 4450mm, max. load capacity: 200kg
- Easy-to-use personal computer software
- I/O (NPN, PNP),
- Ample variations can be constructed by combining standard modules

*Made to order product



Iron body realizes fast tact & high rigidity

Electric actuator EKS-M Series / Driver NXD Series

- Servo motor: 100 to 750W
- 5 sizes
- Max. speed: 2500 mm/s
- Max. stroke: 1500mm
- Max. workload: 171.5 kg



*Japan only release

Shortened tact time

- Acceleration/deceleration: 2G supported

Smaller device footprint

- Iron body structure resistant to load and moment



Compatible with all types of networks

- 4 types of interface
- Real-time waveform adjustments
- "DES", a feature-rich configuration tool

Parallel I/O (NPN)



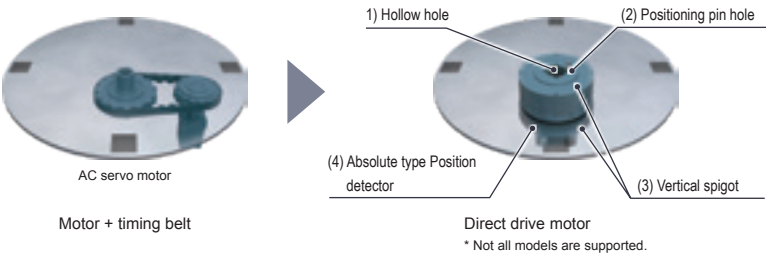
ABSODEX

General purpose direct drive motor for easy use

Best-in-industry high performance direct drive motor

What is a direct drive motor?

It is a drive motor that couples loads directly without interposing mechanisms such as reduction gears, belts or gears between them and transmits power and operation. The elimination of the intermediate mechanism provides a variety of benefits.



Benefits of direct drive motors

- No backlash
- Space saving
- Maintenance-free
- Reduced design processes
- Quiet
- Improved environmental performance

ABSODEX

Ideal for indexing table drive

AX1000T Series

- Max. torque: 22 to 210N•m
- 5 sizes
- High Accuracy
- Ideal for assembly and inspection



AX6000M Series

- Max. torque: 1.2 to 3N•m
- 2 sizes
- Industry's smallest class (As of April 2014, according to CKD research)
- Ideal for transport of fine workpieces and Θ -axis correction



AX2000T Series

- Max. torque: 6 to 18N•m
- 3 sizes
- Small diameter/ High speed rotation
- Ideal for pick & place, turntable, and combinations



AX4000T Series

- Max. torque: 9 to 1000N•m
- 8 sizes
- Large diameter hollow hole
- Ideal for pick & place, turntable, and combinations



AX8000T Series (made to order)

- Max. torque: 45 to 70N•m
- 2 sizes
- Waterproof specification (IP65 or equivalent)
- Ideal for inspections and alignments



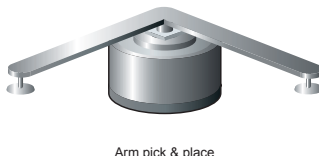
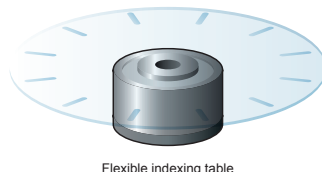
Various drivers

- Compatible in each series
- The Startup Support Tool is available free of charge on our HP



Various interfaces

CC-Link / DeviceNet
EtherCAT
EtherNet/IP / Parallel I/O (NPN, PNP)



Supports high end processing stages



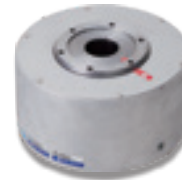
Standard ND-s Series

- Rated torque: 3.4 to 500N•m
- 15 sizes
- Table drive, rotary drive



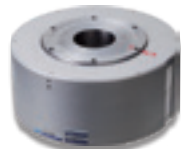
High speed rotating type ND-s HS Series

- Rated torque: 8 to 24N•m
- 4 sizes
- High speed pick & place drive



High rigidity/high precision DD-s Series

- Rated torque: 10 to 2000N•m
- 11 sizes
- High precision roll drive + gantry synchronous drive



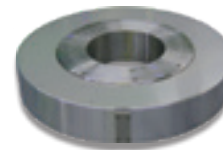
High response type HD-s Series

- Rated torque: 27 to 68N•m
- 3 sizes
- High speed index drive



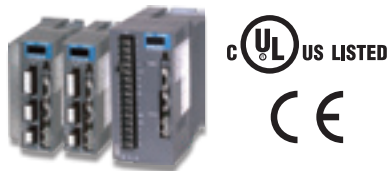
Large hollow diameter FD-s Series

- Rated torque 17 to 600N•m
- 8 sizes
- Large inertia load swivel drive



high-performance servo driver VPH Series

- Developed exclusively for direct drives
- Maximizes motor performance
- Output capacity 100W to 15kW
- system support tool full of functions



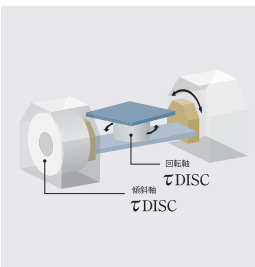
Various interfaces

Also compatible with motion networks

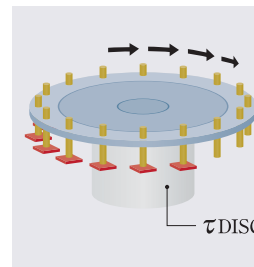


Parallel I/O (NPN)

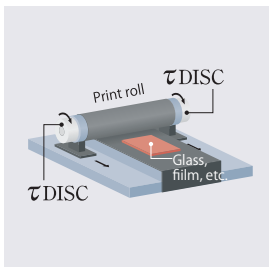
Examples of applications



Laser finishing machine



High-speed indexing device



Roll coater device

ABSODEX is even more powerful and easy to use

ABSODEXNX4Series / DriverNXDSeries

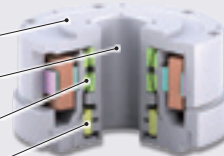
- Max. torque: 22 to 300N•m
- 5 sizes



*Japan only release

Ideal for assembly and transport

- Easy mounting and centering
- Convenient hollow hole
- High rigidity bearing
- Integrated absolute resolver



Compatible with all types of networks

- 5 types of interfaces
- Real-time adjustment while viewing waveforms
- Full-featured configuration tool "NX Tools"



Parallel I/O (NPN)

Three characteristics of the cam unit

Synchronized motion of multiple axes

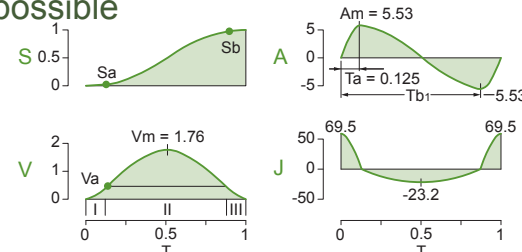
■ Synchronization characteristics

- Multiple cam units can be operated with one drive

High-speed and high frequency output shaft swivel and stop are possible

■ Motion characteristic

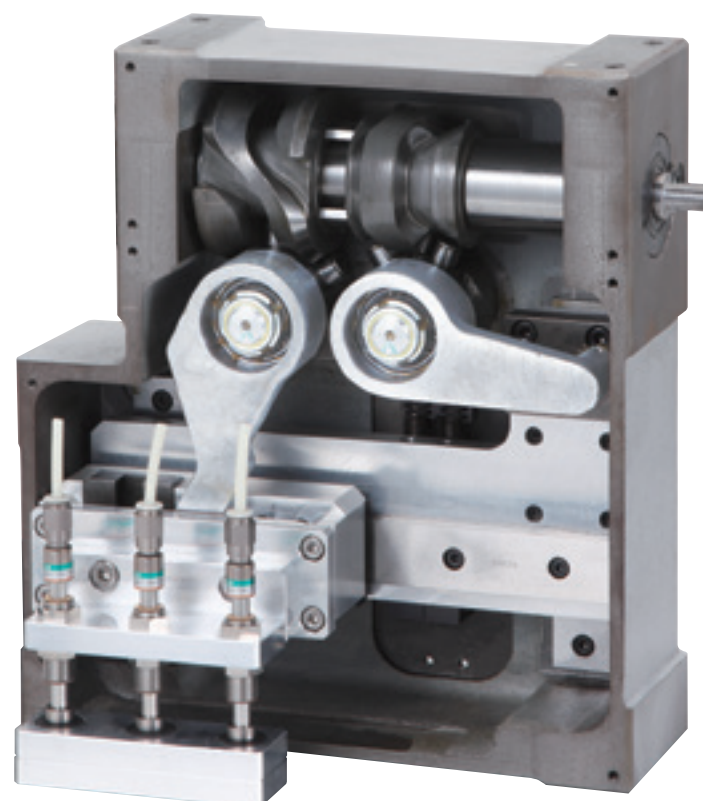
- Realizes a smooth motion curve thanks to the cam



High-precision repeated motion is possible using uniform rotation speed

■ Repetitive characteristics

- By applying uniform rotation speed to the input shaft, motion sequences can be repeated with superb accuracy

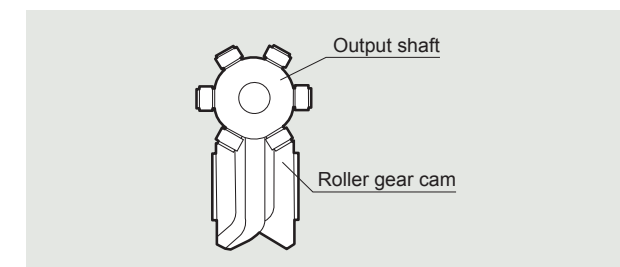


Wide variation

Ideal for indexing table drives

■ Roller gear cam unit

- Compact, high speed, high output, high precision, high rigidity



Compact

RGIS 025, 032



Standard

RGIS 040 to 250



Wide angle

RGIL 063 to 250



Table type

RGIT 063 to 250



Basic

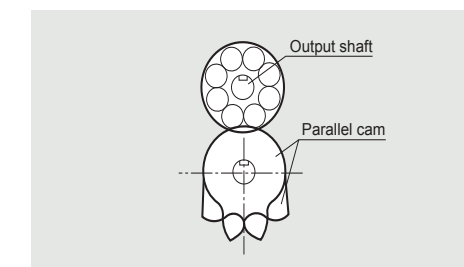
RGIB 250



Ideal for conveyor drives

■ Parallel cam unit

- Input shaft and output shaft are parallel



Parallel cam unit

PCIS 040 to 250

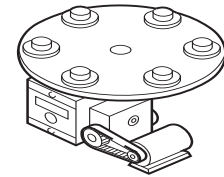
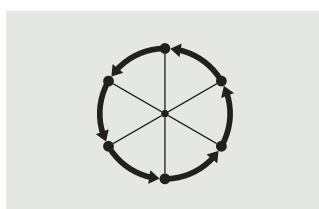


Three cam unit motions

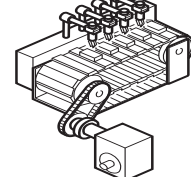
Continuous swivel and stop at the specified angle with the output shaft as center point

■ Index

Applications



Indexing table

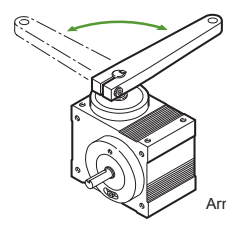
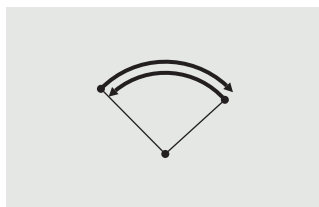


Conveyor pitch feed

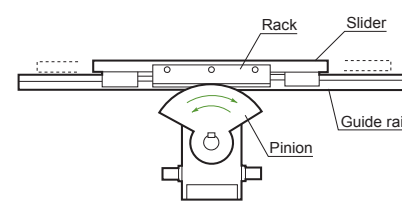
Repeated reciprocal swivel at the specified angle with the output shaft as center point

■ Oscillations

Applications



Arm transport



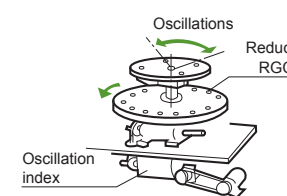
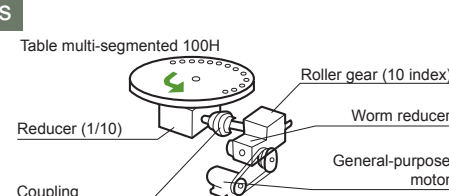
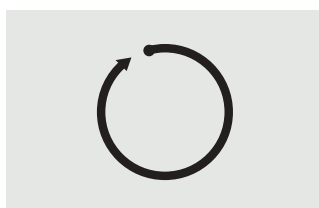
Slider forward reciprocation

Speed reducing mechanism with a reduction ratio that corresponds to the indexing No.

■ Reducer

Applications

Continuously rotating precision speed reducer with no backlash



Ideal for driving index tables

■ Pick and Place

- Realizes tact time down to 0.1 sec cycles (high speed)
- High precision/high rigidity
- Compact, thin and space saving

Swivel pick & place unit

Standard

PPIX/PPOX 050 to 180



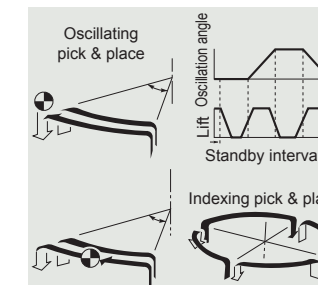
High speed

PPOH/PPIH 040 to 080

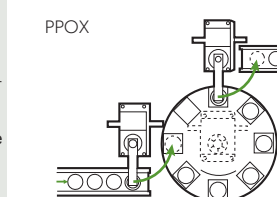


Compact/high-speed/precision

PPIM 063 to 110



Applications



Forward motion pick & place unit

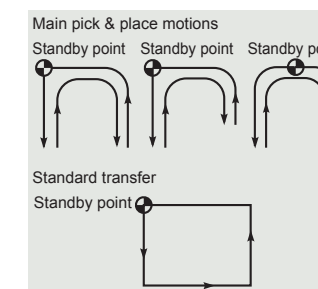
Arm A type

PPLX 040 to 080

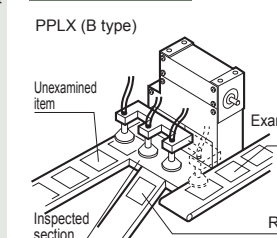


Table B type

PPLX 040 to 080



Applications

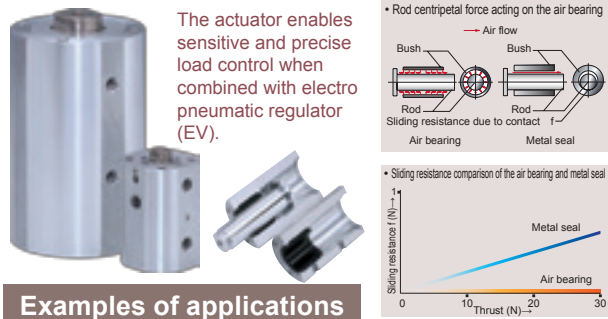


Air bearing actuator

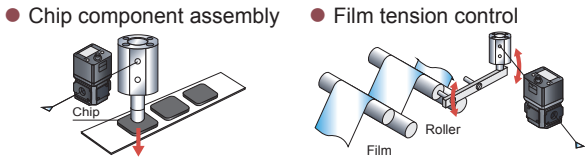
With zero sliding resistance, loads can be controlled with high precision

LBC Series

- Electro pneumatic regulator (EV-FL) for high-precision linear control
- Soft-touch control of loads from just 0.01 N up
- Supports workpieces with the optimal load to match the purpose and application



Examples of applications

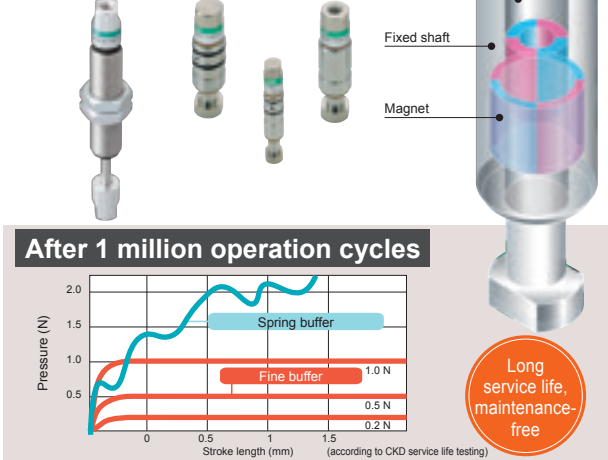
- Chip component assembly
 - Film tension control
- 

Fine buffer

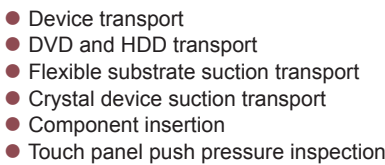
Magnetic springs provide transport with a soft touch and no damage

FBU2 Series

- Clean, with no metal contact and ultra-low dust generation rate
- Long service life and maintenance-free
- Uniform pressure



Examples of applications

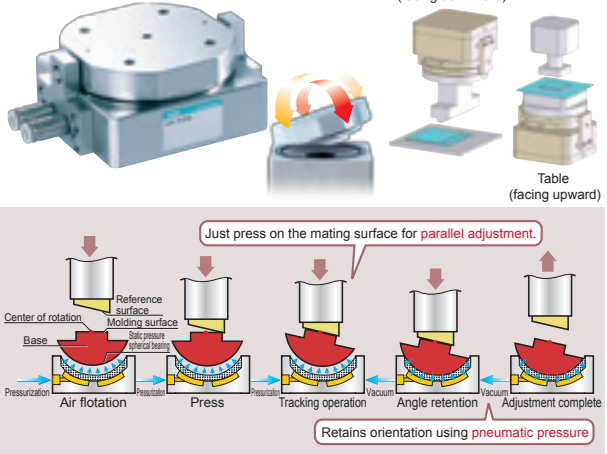
- Device transport
 - DVD and HDD transport
 - Flexible substrate suction transport
 - Crystal device suction transport
 - Component insertion
 - Touch panel push pressure inspection
- 

Air-Gyro

Realizes high precision paralleling, automated adjustment, and reduced processes

LBC-R Series

- Parallel adjustment can be made instantly with "tracking" function
- High precision "tracking" performed by floating the spherical surface base via air pressurization
- Realizes a high precision rotation-stop angle of $\theta = \pm 0.1^\circ$ with regard to the axis



Actuator with magnetic spring shock absorption mechanism

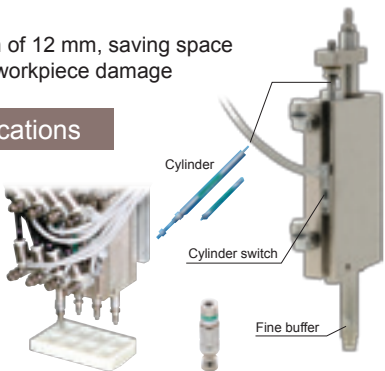
Integrated pneumatic cylinder and cylinder switch

AFB-P Series

- Features a thin width of 12 mm, saving space
- Soft touch prevents workpiece damage

Examples of applications

- Precision installation
- Fragile part transport
- Transport of multi-model parts



Buffer & rotary alignment

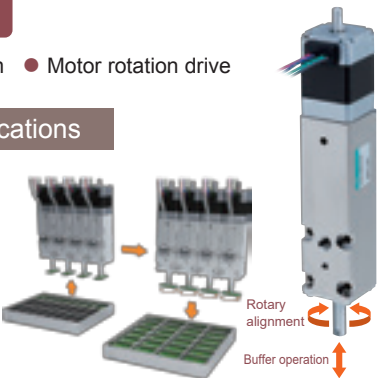
AFB-RB Series

- Width/pitch of 20 mm
- Motor rotation drive

Examples of applications

Compact installation is possible

- Rotary alignment during pick & place



Floating system/Glass float module

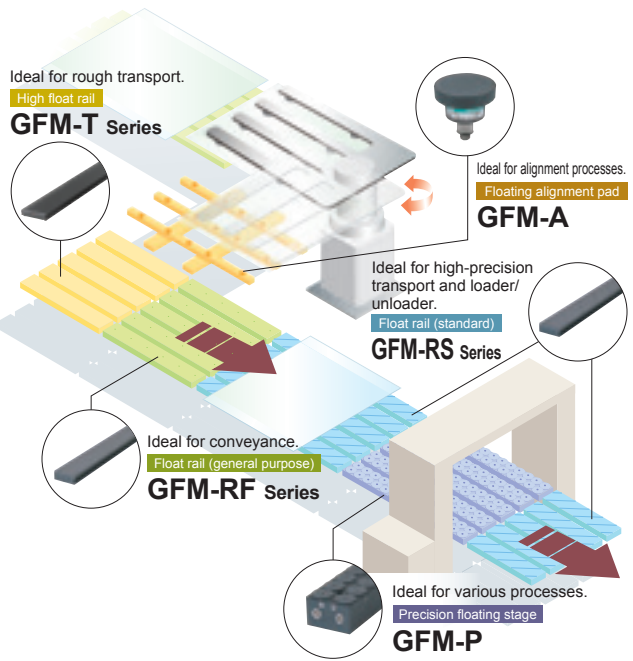
Significantly reduces air consumption, and improves quality and yield thanks to our proprietary floating system

GFM Series

- Non-contact and stable high-precision floating
- Antistatic protection for workpieces using new materials
- Achieves class 10 level

Model variations	Applications	Float [μm]	Air consumption l/min (abs) (at 0.1MPa) *1
GFM-A	Positioning	10 μm or more *2	3 10
GFM-T Series	Rough transport	250 μm or more *2	100 or less
GFM-RF Series	Transport	250 μm or more *2	15 20
GFM-RS Series	Loader and unloader	150 μm or more *2	15 20
GFM-P	Various processes	30 μm *3	2 3

*1: Take this as a guideline for air consumption.
 *2: Take this as a guideline for float amount.
 *3: The numerical values change according to the combination of positive and negative pressure flow rate.



Precise suction plate

Does not damage delicate workpieces such as ultra-thin and soft materials, nor cause deflection or deformation due to suctioning

PVP Series

- Suction surface flatness: 2 μm, parallelism: 5 μm
- No vacuum deformation of ultra-thin workpieces thanks to the wide suction surface
- Features Shore D60 hardness with a soft touch that does not damage workpieces
- Inspections that were not previously possible can now be performed thanks to the non-reflective black porous plate
- Wide range of plate shapes

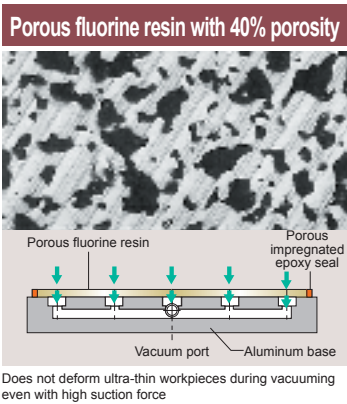
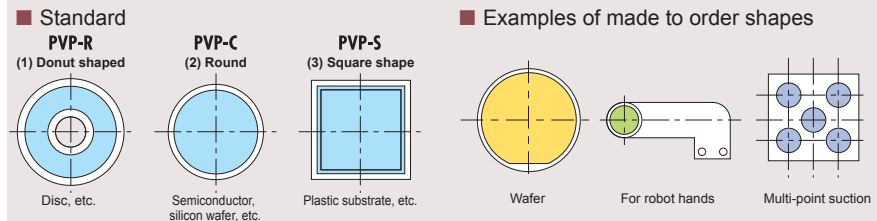


Plate shape

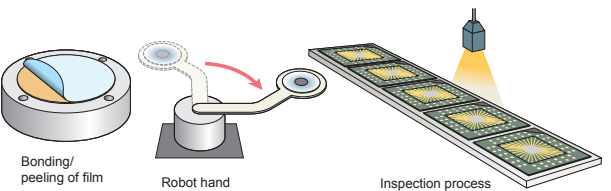


Three standard shapes are available. Furthermore, any other shape of plate can be manufactured as needed.
 * Contact CKD for made to order shapes.

Examples of applications

Perfect for suctioning and conveying fragile workpieces such as thin wafer and film.

- Suctioning to fix workpieces in the semiconductor manufacturing process (for bonding, etc.)
- Inspection equipment
- Conveying workpieces
- Part assembly processes



Contact us regarding any FA needs

Factory Automation Solution

FA Customer Service

We solve your FA problems!

Consideration of device specifications

Model selection/Technical calculations

Device start-up adjustment

Troubleshooting

Get information more easily and faster.

YouTube video

The dedicated software S-Tools, operation manual, maintenance method, etc., have been published.

CKD YouTube channel

Check with iPad or your smart phone.

*Depending on your smartphone environment, it may not be displayed correctly.



CKD Technical Seminars

"See" "Learn" "Experience"

Meticulous support for electric actuators to ABSODEX maintenance to troubleshooting

Electric Actuator course

Course overview

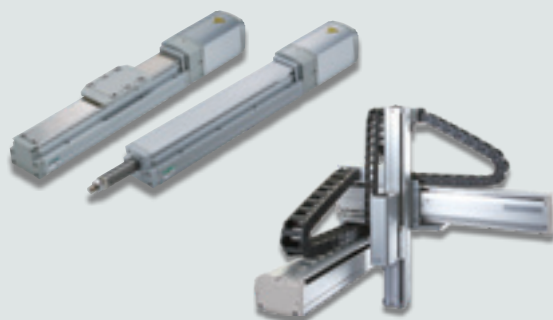
Overview and selection guide for electric actuators

Course targets

Designers and production facilities personnel

Main content of course

- (1) Functions, characteristics, models, internal structures, appropriate usage
- (2) Handling precautions and model selection
- (3) Electric actuator program creation, actual devices



ABSODEX Course

Course overview

This is the basic course for automated equipment.

Course targets

Designers and production facilities personnel

Main content of course

- (1) Functions, characteristics, models, internal structures, appropriate usage
- (2) Handling precautions and model selection
- (3) Usage examples
- (4) Troubleshooting
- (5) ABSODEX program creation, practice with actual devices



* Contact CKD for details.

MODEL SELECTION SYSTEM

Available on your website

This system is used to select products according to your application and working conditions.



*Downloading Software may not be possible due to your security settings. If that is the case, contact CKD.

Caravan

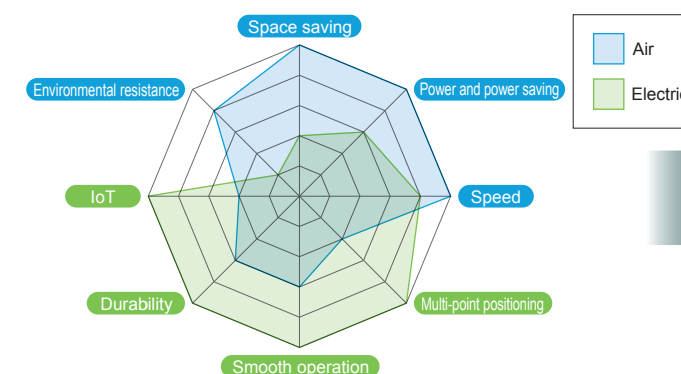
Various demonstration machines are available



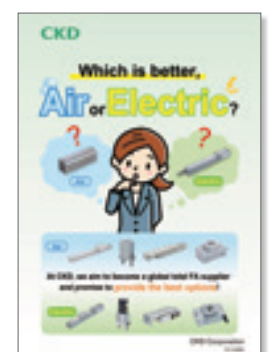
Pneumatic and Electric Motion Benefits Comparison

Catalog CC-1446A

Air in this case? Electric motion?



For more information



Ethernet is a trademark or registered trademark of Fuji Xerox Corporation.
PROFIBUS and PROFINET are trademarks or registered trademarks of PROFIBUS User Organization e.V.
DeviceNet and EtherNet/IP are trademarks or registered trademarks of Open DeviceNet Vendor Association, Inc.
CC-Link is a trademark or registered trademark of the Mitsubishi Electric Corporation.
EtherCAT is a patented Engineering licensed by Beckhoff Automation GmbH, Germany, and is a trademark or registered trademark.
MECHATROLINK is a trademark or registered trademark of the YASKAWA Electric Corporation.



CKD Corporation

Website <https://www.ckd.co.jp/>

ASIA

喜開理(上海)機器有限公司

CKD(SHANGHAI)CORPORATION

● 営業部 / 上海浦西事務所 (SALES HEADQUARTERS / SHANGHAI PUXI OFFICE)
Room 601, 6th Floor, Yuanzhongkeyan Building, No. 1905
Hongmei Road, Xinhui District, Shanghai 200233, China
PHONE +86-21-61911888 FAX +86-21-60905356

- 上海浦東事務所 (SHANGHAI PUDONG OFFICE)
- 寧波事務所 (NINGBO OFFICE)
- 杭州事務所 (HANGZHOU OFFICE)
- 無錫事務所 (WUXI OFFICE)
- 昆山事務所 (KUNSHAN OFFICE)
- 蘇州事務所 (SUZHOU OFFICE)
- 南京事務所 (NANJING OFFICE)
- 合肥事務所 (HEFEI OFFICE)
- 成都事務所 (CHENGDU OFFICE)
- 武漢事務所 (WUHAN OFFICE)
- 鄭州事務所 (ZHENGZHOU OFFICE)
- 長沙事務所 (CHANGSHA OFFICE)
- 重慶事務所 (CHONGQING OFFICE)
- 西安事務所 (XI'AN OFFICE)
- 廣州事務所 (GUANGZHOU OFFICE)
- 中山事務所 (ZHONGSHAN OFFICE)
- 深圳西事務所 (WEST SHENZHEN OFFICE)
- 深圳東事務所 (EAST SHENZHEN OFFICE)
- 東莞事務所 (DONGGUAN OFFICE)
- 廈門事務所 (XIAMEN OFFICE)
- 福州事務所 (FUZHOU OFFICE)
- 瀋陽事務所 (SHENYANG OFFICE)
- 大連事務所 (DALIAN OFFICE)
- 長春事務所 (CHANGCHUN OFFICE)
- 北京事務所 (BEIJING OFFICE)
- 天津事務所 (TIANJIN OFFICE)
- 青島事務所 (QINGDAO OFFICE)
- 濰坊事務所 (WEIFANG OFFICE)
- 濟南事務所 (JINAN OFFICE)
- 煙台事務所 (YANTAI OFFICE)

CKD INDIA PRIVATE LTD.

● HEADQUARTERS

Unit No. 607, 6th Floor, Welldone Tech Park, Sector 48,
Sohna Road, Gurgaon-122018, Haryana, India
PHONE +91-124-418-8212 FAX +91-(0)124-418-8216

● BANGALORE OFFICE

● PUNE OFFICE

□ 2-250 Oujji, Komaki City, Aichi 485-8551, Japan

□ PHONE +81-568-74-1338 FAX +81-568-77-3461

PT CKD TRADING INDONESIA

● HEAD OFFICE

Menara Bidakara 2, 18th Floor, Jl. Jend. Gatot Subroto Kav.
71-73, Pancoran, Jakarta 12870, Indonesia
PHONE +62-21-2938-6601 FAX +62-21-2906-9470

- MEDAN OFFICE
- BEKASI OFFICE
- KARAWANG OFFICE
- SEMARANG OFFICE
- SURABAYA OFFICE

CKD KOREA CORPORATION

● HEADQUARTERS

(3rd Floor), 44, Sinsu-ro, Mapo-gu, Seoul 04088, Korea
PHONE +82-2-783-5201~5203 FAX +82-2-783-5204

- 水原營業所 (SUWON OFFICE)
- 天安營業所 (CHEONAN OFFICE)
- 蔚山營業所 (ULSAN OFFICE)

M-CKD PRECISION SDN.BHD.

● HEAD OFFICE

Lot No.6, Jalan Modal 23/2, Seksyen 23, Kawasan MIEL,
Fasa 8, 40300 Shah Alam, Selangor Darul Ehsan, Malaysia
PHONE +60-3-5541-1468 FAX +60-3-5541-1533

- JOHOR BAHRU BRANCH OFFICE
- PENANG BRANCH OFFICE

CKD SINGAPORE PTE. LTD.

No.33 Tannery Lane #04-01 Hoesteel Industrial
Building, Singapore 347789, Singapore
PHONE +65-67442623 FAX +65-67442486

CKD CORPORATION BRANCH OFFICE

No.33 Tannery Lane #04-01 Hoesteel Industrial
Building, Singapore 347789, Singapore
PHONE +65-67447260 FAX +65-68421022

CKD THAI CORPORATION LTD.

● HEADQUARTERS

19th Floor, Smooth Life Tower, 44 North Sathorn Road,
Silom, Bangkok, Bangkok 10500, Thailand
PHONE +66-2-267-6300 FAX +66-2-267-6304-5

- NAVANAKORN OFFICE
- EASTERN SEABOARD OFFICE
- LAMPHUN OFFICE
- KORAT OFFICE
- AMATANAKORN OFFICE
- PRACHINBURI OFFICE
- SARABURI OFFICE

台灣喜開理股份有限公司

TAIWAN CKD CORPORATION

● HEADQUARTERS

16F-3, No. 7, Sec. 3, New Taipei Blvd., Xinzhuang Dist.,
New Taipei City 242, Taiwan
PHONE +886-2-8522-8198 FAX +886-2-8522-8128

- 新竹營業所 (HSINCHU OFFICE)
- 台中營業所 (TAICHUNG OFFICE)
- 台南營業所 (TAINAN OFFICE)
- 高雄營業所 (KAOHSIUNG OFFICE)

CKD VIETNAM ENGINEERING CO.,LTD.

● HEADQUARTERS

18th Floor, CMC Tower, Duy Tan Street, Cau Giay
District, Hanoi, Vietnam
PHONE +84-24-3795-7631 FAX +84-24-3795-7637

- HO CHI MINH OFFICE

EUROPE

CKD EUROPE B.V.

● HEADQUARTERS

Beechavenue 125A, 1119 RB Schiphol-Rijk, the Netherlands
PHONE +31-23-554-1490

- CKD EUROPE GERMANY OFFICE
- CKD EUROPE UK
- CKD EUROPE CZECH O.Z.

CKD CORPORATION EUROPE BRANCH

Beechavenue 125A, 1119 RB Schiphol-Rijk, the Netherlands
PHONE +31-23-554-1490

NORTH AMERICA & LATIN AMERICA

CKD MEXICO, S. DE R.L. DE C.V.

Cerrada la Noria No. 200 Int. A-01, Querétaro Park II,
Parque Industrial Querétaro, Santa Rosa Jáuregui,
Querétaro, C.P. 76220, México
PHONE +52-442-161-0624

CKD USA CORPORATION

● HEADQUARTERS

1605 Penny Lane, Schaumburg, IL 60173, USA
PHONE +1-847-648-4400 FAX +1-847-565-4923

- LEXINGTON OFFICE
- SAN ANTONIO OFFICE
- SAN JOSE OFFICE/ TECHNICAL CENTER
- DETROIT OFFICE
- BOSTON OFFICE

The goods and/or their replicas, the technology and/or software found in this catalog are subject to complementary export regulations by Foreign Exchange and Foreign Trade Law of Japan.

If the goods and/or their replicas, the technology and/or software found in this catalog are to be exported from Japan, Japanese laws require the exporter makes sure that they will never be used for the development and/or manufacture of weapons for mass destruction.