

Air operated 2-port ball valve  
(Compact rotary valves)

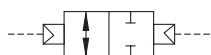
# CSB-W, CSB-WR\* Series

● Port size: Rc3/8 to Rc2



## JIS symbol

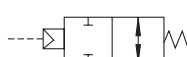
● CSB-W  
(Double acting)



● CSB-WR1  
(Single acting-NC)



● CSB-WR2  
(Single acting-NO)



## Common specifications

Item	CSB-W	CSB-WR*
Actuation	Air operated: Double acting	Air operated: Single acting
Working fluid	Steam/hot water	
Working pressure MPa	0 to 0.6	
Proof pressure(water) MPa	2.0	
Fluid temperature °C	0 to 164(no freezing)	
Ambient temperature°C	-10 to 60	
Working environment	Indoors/outdoors	
Valve seat leakagecm <sup>3</sup> /min	1 or less (at initial water pressure 0.6 MPa)	
Mounting orientation	Unrestricted	
Frequency cycles/min.	1 or less	
Rotary actuator	Pilot fluid	Compressed air
	Lubrication	Not required(Use turbine oil class 1 ISO VG32 if necessary for lubrication.)
	Proof pressure(water) MPa	1.5
	Working pressureMPa	0.35 to 0.7
	Fluid temperature°C	5 to 60
Port size		Rc1/8

## Individual specifications

Item		Port size	Orifice size(mm)	Cv	Weight (kg)	
Model No.					Double acting	Single acting
Standard bore	CSB-W(R*)-10	Rc3/8	10	10	1.0	1.1
	CSB-W(R*)-15	Rc1/2	10	6	1.0	1.1
	CSB-W(R*)-20	Rc3/4	15	16	1.2	1.3
	CSB-W(R*)-25	Rc 1	20	29	1.3	2.2
	CSB-W(R*)-32	Rc1¼	25	50	2.3	2.8
	CSB-W-40	Rc1½	32	98	2.7	-
	CSB-W-50	Rc 2	40	125	3.5	-

\*1: CSB- (WR\*) -10 is a full bore type.

\*2: CSB (- WR \*) -40/50 is not supported.

## How to order

**CSB - W R1 - 15 - W**

Model No.

**A** Warranty period

**B** Actuator

**C** Port size  
\*3

**D** Body/seal material

Code	Description
<b>A Warranty period</b>	
<b>W</b>	1 year after delivery
<b>WG</b>	3 years after delivery *1, *2 (with inspection certificate, inspection guidelines, traceability system diagram)
<b>B Actuator</b>	
<b>Blank</b>	Double acting
<b>R1</b>	Single acting NC (normally closed)
<b>R2</b>	Single acting NO (normally open)
<b>C Port size</b>	
<b>10</b>	Rc 3/8
<b>15</b>	Rc 1/2
<b>20</b>	Rc 3/4
<b>25</b>	Rc 1
<b>32</b>	Rc 1 1/4
<b>40</b>	Rc 1 1/2
<b>50</b>	Rc 2
<b>D Body/seal material</b>	
<b>W</b>	Stainless steel - reinforced PTFE *3

[Example of model No.]

**CSB-WR1-15-W**

Model: CSB (standard bore)

- A** Warranty period : 1 year after delivery
- B** Actuator : Single acting NC (normally closed)
- C** Port size : Rc 1/2
- D** Body/seal material : stainless steel - reinforced PTFE

## ⚠ Precautions for model No. selection

\*1: The warranty period of option WG is guaranteed for a period of three years from the date of delivery or for a period of one year from the start of use, whichever comes first.

\*2: For option WG, the specifications and drawings must be exchanged. Refer to page 101 for details.

\*3: CSB-WR\*-40/50 is not supported.

Drain separator  
F.R.L. unit

Pneumatic auxiliary  
components

Pneumatic  
valves

Fluid control  
valves

Pneumatic  
cylinders

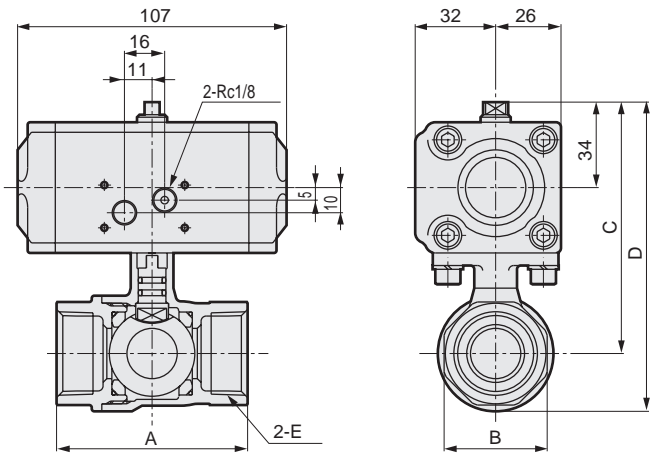
Related  
products

Safety  
precautions

# CSB-W, CSB-WR\* Series

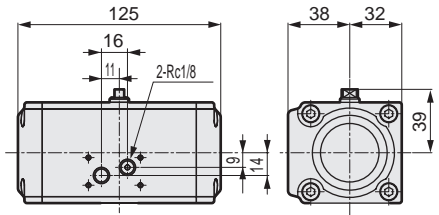
## Dimensions: CSB-W Series

● CSB-W-10/15/20/25/32/40/50



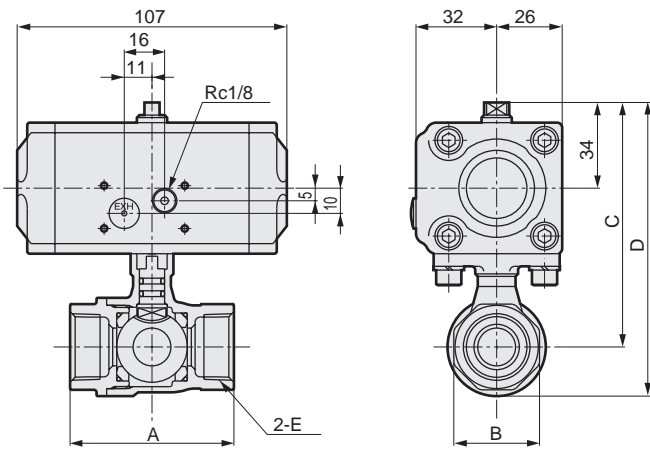
Model No.	A	B	C	D	E
CSB-W-10	56	28	91	107	Rc3/8
CSB-W-15	56	28	91	107	Rc1/2
CSB-W-20	65	34	97	117.5	Rc3/4
CSB-W-25	76	41	100	124	Rc 1
CSB-W-32	84	50	116	145.5	Rc1 1/4
CSB-W-40	94	57	122	157.5	Rc1 1/2
CSB-W-50	108	70	131	171.5	Rc 2

CSB-W-32/40/50 actuator



## Dimensions: CSB-WR\* Series

● CSB-WR\*-10/15/20/25/32



Model No.	A	B	C	D	E
CSB-WR*-10	56	28	91	107	Rc3/8
CSB-WR*-15	56	28	91	107	Rc1/2
CSB-WR*-20	65	34	97	117.5	Rc3/4
CSB-WR*-25	76	41	110	134	Rc1
CSB-WR*-32	84	50	116	145.5	Rc1 1/4

CSB-WR\*-25/32 actuator

