



Tap water control valve (approved by JWWA)

# RSV-W solenoid valve

- For watering with tap water of greenery on urban highways, in parks and factories, and on building rooftops, etc.
- For water supply control of tap water ● Continuously energized, latch
- Pilot operated diaphragm

## Main applications

Applications of attaching a solenoid valve on a tap water pipe

- Controlling the water supply of a pool, bath, shower, toilet, etc.
- Controlling the water supply of cleaning equipment
- Watering of rooftops and gardens

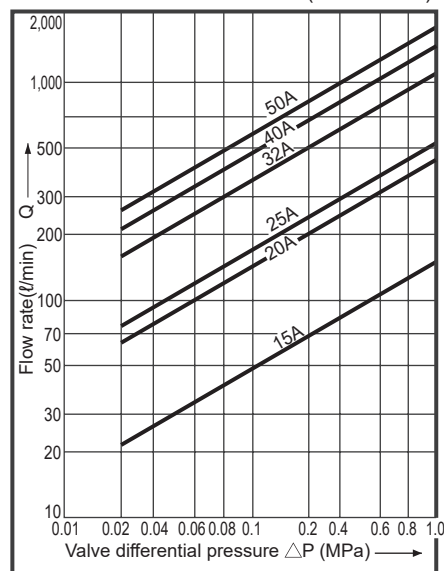
## Overview

- Low water hammer
- A type equipped with a strainer for the main flow path to prevent the entry of trash can also be made. (15A to 25A)
- An outdoor type is also available (3A, 7A, 7L)

## Specifications

Item	RSV-15A-210W-3A011	RSV-20A-210W-3A011	RSV-25A-210W-3A011	RSV-32A-210W-3A011	RSV-40A-210W-3A011	RSV-50A-210W-3A011
Working fluid	Tap water					
Max. working pressure MPa	1 (≈150 psi, 10 bar)					
Working pressure differential MPa	0.02 (≈2.9 psi, 0.2 bar) to 1 (≈150 psi, 10 bar)					
Structural proof pressure MPa	1.75 (≈250 psi, 17.5 bar)					
Fluid temperature °C	5 (32°F) to 60 (140°F) (no freezing)					
Ambient temperature °C	0 (32°F) to 60 (140°F)					
Ambient humidity %	95 or less					
Orifice size mm	15.5	25.5	25.5	50.5	50.5	50.5
Cv	3.4	10.1	12.0	25.0	34.0	41.0
Frequency times/min.	1 or less					
Mounting orientation	Horizontal position with coil on top					
Port size	RC <sup>1</sup> / <sub>2</sub>	RC <sup>3</sup> / <sub>4</sub>	RC1	RC1 <sup>1</sup> / <sub>4</sub>	RC1 <sup>1</sup> / <sub>2</sub>	RC2
Weight kg	1.5	2.0	2.0	4.2	4.2	4.2
<b>Electrical specifications</b>						
Drive method/voltage	Continuously energized: 24 VDC, 100:200 VAC (50/60 Hz) *1 Latch pulse signal: 7L *2					
Power consumption W	100 VAC/200 VAC: 5.2/3.8 (50/60 Hz) 24 VDC: 11					
Thermal class	Class 130 (B) (JIS C 4003)					
Apparent power VA	When holding: 12/10 (50/60Hz), When starting: 17/14 (50/60Hz)					
Leakage current mA	6 or less/100 VAC, 3 or less/200 VAC, 1 or less/24 VDC					

## Flow characteristics (Fluid: water)



## Application based coil shape selection examples

- For indoor housing facilities (drainage) .....2G
- For installation within manholes for urban greenery, etc.....7A
- Battery controller for controlling solar controllers for urban greenery, etc. ...7L
- For outdoor drainage.....3A

### How to order

RSV- **25A** - 210W - **3A** **0** 11 - **AC100V**

**A** Port size

**B** Coil housing \*3

**C** Strainer

**D** Voltage

Code	Description
<b>A Port size</b>	
<b>15A</b>	Rc1/2
<b>20A</b>	Rc3/4
<b>25A</b>	Rc1
<b>32A</b>	Rc1 1/4
<b>40A</b>	Rc1 1/2
<b>50A</b>	Rc2
<b>B Coil housing</b>	
<b>2G</b>	Coil with DIN terminal box (for housing facilities)
<b>3A</b>	Coil with open frame (for greenery)
<b>00</b>	Grommet lead (for housing facilities) *1
<b>7A</b>	Low-watt coil - 3W (for greenery)
<b>7L</b>	Latch coil (for greenery) *2
<b>C Strainer</b>	
<b>0</b>	None Standard
<b>2</b>	With *4
<b>D Voltage</b>	
<b>AC100V</b>	100 VAC 50/60 Hz
<b>AC200V</b>	200 VAC 50/60 Hz
<b>DC24V</b>	24 VDC

### Precautions on model No. selection

\*1 When the coil housing is "00", it is only possible to select AC for the voltage.

\*2 The latch coil shape 7L is dedicated for the controller manufactured by CKD.

The voltage of the model No. when placing an order is 6 VDC.

Applicable controller

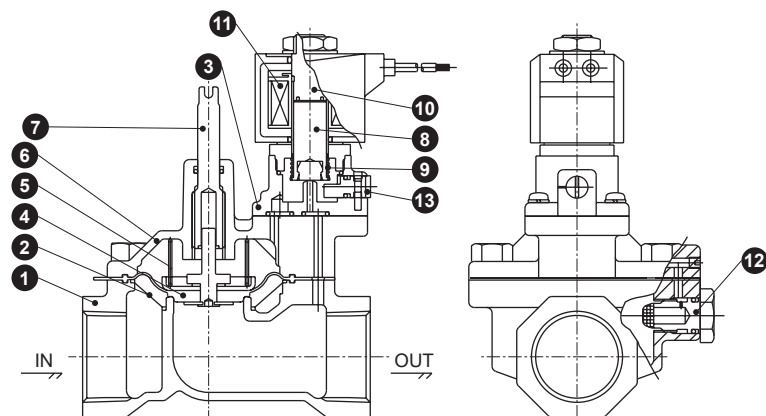
· RSC-S5, RSC-G series

· RSC-1WP, RSC-2WP

\*3 Coil options 7A and 7L with bore size of 20A or more are available.

\*4 Strainers integrated with bore sizes of 15 to 25A are available.

## Internal structure and parts list

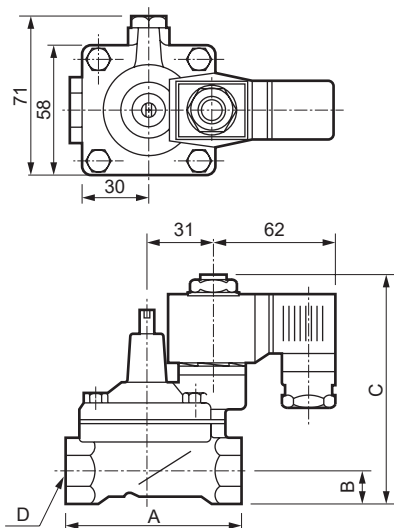


Cannot be disassembled

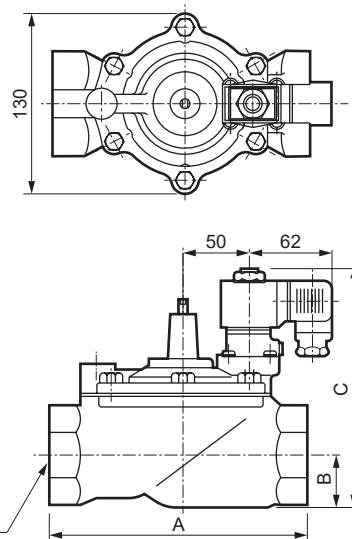
No.	Part name	Material
1	Valve body	Bronze casting
2	Strainer	Stainless copper wire (available up to 25A)
3	Pilot valve seat	Bronze casting
4	Diaphragm	Ethylene propylene rubber
5	Diaphragm assembly	Cold-rolled stainless steel plates
6	Spring	Stainless steel wire for springs
7	Pilot valve body	Bronze casting
8	Flow rate adjusting	Stainless copper bar
9	Plunger	Stainless copper bar
10	Valve seat	Nitrile rubber
11	Spring	Stainless steel wire for springs
12	Core assembly	Stainless steel bar
13	Coil	-
	Bleed orifice	Free machining copper alloy bar
	Manual cock	Stainless steel bar

## Dimensions

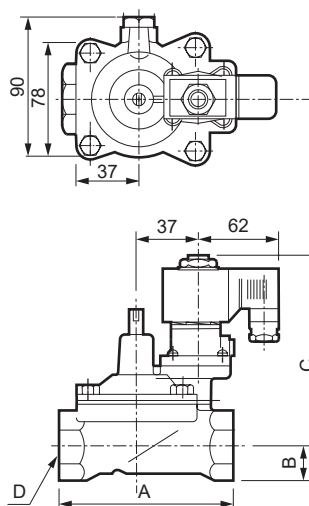
### ● RSV-15A-210W



### ● RSV-32A-210W 50



### ● RSV-20A-210W 25



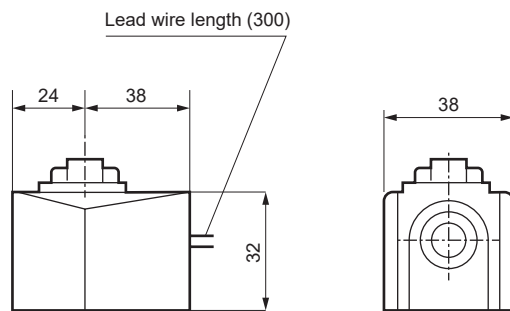
Model No.	A	B	C	7A, 7L	D
RSV-15A-210W	80	15	102	-	Rc1 $\frac{1}{2}$
RSV-20A-210W	100	18	135	163	Rc3 $\frac{3}{4}$
RSV-25A-210W	105	22	141	169	Rc1
RSV-32A-210W	168	29	154	182	Rc1 $\frac{1}{4}$
RSV-40A-210W	176	34	164	192	Rc1 $\frac{1}{2}$
RSV-50A-210W	180	39	174	202	Rc2

⚠ Always read the precautions in the instruction manual before starting use.

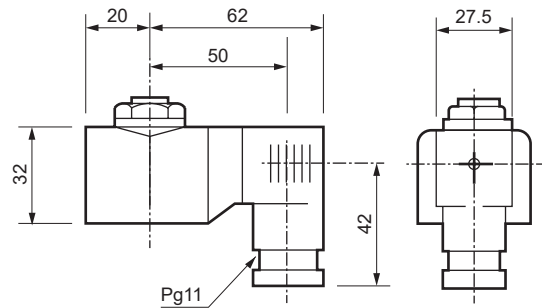
## Coil housing shape

### Standard

- Open frame (3A) greenery

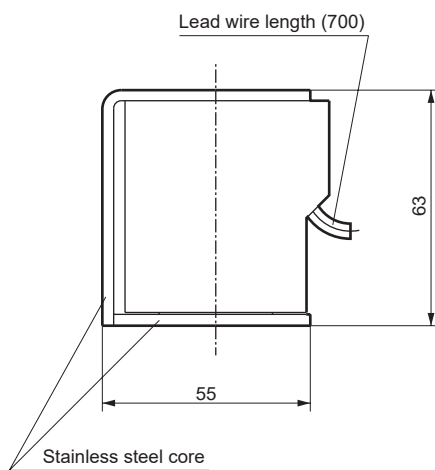


- Type with DIN terminal (2G) housing facilities



### Option

- Low-watt (7A) greening  
Continuous energizing



- Latch (7L) greenery

