

MW4G4 Series

How to fill out manifold specifications sheet

● Manifold model No. (example)

Solenoid position
2 types or more
 Port size
Rc3/8
 Common terminal block
left-sided specifications

MW **4** **GB4** **8** **0-** **10** **-** **T10** **W** **M** **-** **6** **-** **3**

A Model No. B Solenoid position C Port size D Wiring method E Option F Station No. G Voltage

H Terminal/connector pin array

When filling in this field, select the model No. from Block configurations (pages 1146 to 1156), pages 1125, 1131, 1132.

Part name	Model No.	Installation position																Quantity
		1	2	3	4	5	6	7	8	9	10	11	12	13	14	15	16	
End block (page 1149)	NW4G4-E	L																1
	NW4G4-E	R																1
Wiring block (page 1153)	NW4G4-T	10																1
Valve block with solenoid valve (pages 1125, 1131, 1132)	NW4GB4	1	0-	10														1
	NW4GB4	2	0-	10														4
	NW4GB4	3	0-	10														1
	NW4GB4		0-															
	NW4GB4		0-															
	NW4GB4		0-															
Valve block with masking plate (page 1148)	NW4GB4-MP	-		-														
	NW4GB4-MP	-		-														
Partition block (page 1150)	NW4G4-SA-																	
Spacer (page 1156)	Independent supply spacer	W4G4-P-																
	Independent exhaust spacer	W4G4-R-																
	Spacer regulator (Custom order)	W4G4-SR-																
Others	Partition plug (page 1155)	M4TB3-NCP																
		M4TB3-NCR																2x
Attached product	Silencer (resin)	SLW-15A																
	Blanking plug	GWP8-B																
		GWP10-B																
		GWP12-B																
	Cable clamp (page 1155)	W4G-																

List the number of units to be used in the quantity field on the right.

Preparing manifold specifications sheet

- Complete from the left end, with the piping port facing forward, regardless of the wiring block method.
(Write the block model numbers and positions you determined referring to the block configurations (pages 1146 to 1156).)
- Write the total number of blocks specified in the required quantity field at the table far right.
- Mark a circle for attached products that are required.
- As there are manifold specifications sheet for each of the various series, fill in the form for the corresponding specifications.
 MW4GB4 (Base side piping)Page 1182
 MW4GZ4 (Base bottom piping)Page 1183
- Multiple stacked assemblies of spacers are available as custom order.
Contact CKD to place an order.

How to fill out the wiring specifications sheet (T10 AC specifications only)

This is not required with standard wiring/double wiring.

● Wiring specifications sheet (example)

*The following example has been filled out in accordance with the manifold specifications sheet on the previous page.

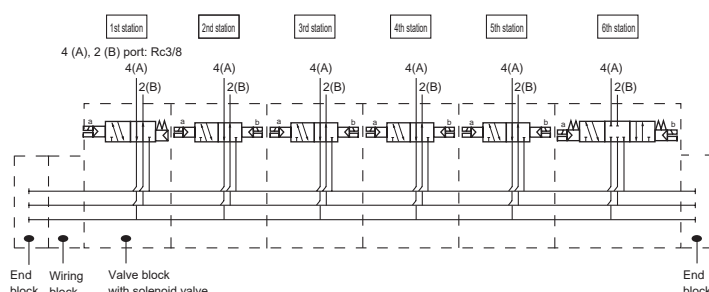
Connector pin or terminal block No.	Valve No.															
T10	1	2	3	4	5	6	7	8	9	10	11	12	13	14	15	16
1		a														
2		b														
3	a															
4																
5			a													
6			b													
7				a												
8				b												
9					a											
10					b											
11						a										
12						b										
13																
14																
15																
16																
COM																
COM																

● Notes on wiring specifications sheet

- (1) Fill in and attach to the manifold specifications sheet for anything other than the standard wiring or double wiring.
Consult with CKD, as products will be made to order in this case.
- (2) The valve No. is determined by counting the valve blocks only in order from the left with the ports facing forward.
Note that this differs from the installation position numbers.
- (3) The valve block with masking plate is wired in advance.
“-MPS” will be wired on only the a side while “-MPD” will be wired on the a and b sides.
- (4) Double solenoids or 3-position solenoid valves cannot be assembled to “-MPS”.
Order valve block with solenoid valve and carry out expansion.
Refer to page 1176 for instructions on how to expand stations.
- (5) It is not possible to install spare wires for station expansion only in advance. Install a valve block with a masking plate.

Reference circuit diagram

The circuit diagram of the manifold model No. (example) on the previous page is as shown below.



- [] indicates each block configuration.
- The manifold station numbers are set in order from the left with the piping port facing forward.
(* The wiring blocks and end block are not included in the manifold station No.)
- Select a model No. from the block configurations (pages 1146 to 1156) and individual wiring, reduced wiring manifolds (pages 1125, 1131, 1132).
- With piping port facing front, arrangement positions are set in order from the left.

MW4GZ4 Block manifold specifications sheet

● Contact ● Quantity Set ● Delivery date / /

Slip No.	Order No.
----------	-----------

Issued / /

Company

Contact

Order No.

● Manifold model No.

MW4GZ4 **0-** - - -

Ⓐ Model No. Ⓑ Solenoid position Ⓒ Port size Ⓓ Wiring method Ⓔ Option Ⓕ Station No. Ⓖ Voltage

Ⓗ Terminal/connector pin array

· When filling in this field, select the model No. from Block configurations (pages 1146 to 1156), pages 1125, 1131, 1132.

Part name		Model No.	Installation position																Quantity
			1	2	3	4	5	6	7	8	9	10	11	12	13	14	15	16	
End block (page 1149)		NW4G4-E																	
		NW4G4-E																	
Wiring block (page 1153)		NW4G4-T																	
Valve block with solenoid valve (pages 1125, 1131, 1132)		NW4GZ4	0-		-														
		NW4GZ4	0-		-														
		NW4GZ4	0-		-														
		NW4GZ4	0-		-														
		NW4GZ4	0-		-														
Valve block with masking plate (page 1148)		NW4GZ4-MP	-		-														
		NW4GZ4-MP	-		-														
Partition block (page 1150)		NW4G4-SA-																	
Spacer (page 1156)	Independent supply spacer	W4G4-P-																	
	Independent exhaust spacer	W4G4-R-																	
	Spacer regulator (custom order)	W4G4-SR-																	
Others	Partition plug (page 1155)	M4TB3-NCP																	
		M4TB3-NCR																	2x
Attached product	Silencer (resin)	SLW-15A	List the number of units to be used in the quantity field on the right.																
	Blanking plug	GWP8-B																	
		GWP10-B																	
		GWP12-B																	
	Cable clamp (page 1155)	W4G-																	

● Wiring specification sheet (Not required for standard wiring and double wiring.)

Connector pin or terminal block No.	Valve No.															
T10	1	2	3	4	5	6	7	8	9	10	11	12	13	14	15	16
1																
2																
3																
4																
5																
6																
7																
8																
9																
10																
11																
12																
13																
14																
15																
16																
COM																
COM																

1: Refer to page 1184 for T7 manifold specifications sheet.

4GA/B

M4GA/B

MN4GA/B

4GA/B (master)

4GB

With sensor

4GD/E

M4GD/E

MN4GD/E

4GA4/B4

MN3E

MN4E

W4GA/B2

W4GB4

MN3S0

MN4S0

4SA/B0

4KA/B

4KA/B (master)

4F

4F (master)

PV5G

GMF

PV5

GMF

PV5S-0

3Q

MV3QR

3MA/B0

3PA/B

P/M/B

NP/NAP

NVP

4G*0EJ

4F*0EX

4F*0E

HNV

HSV

2QV

3QV

SKH

Silencer

TotAirSys

(Total Air)

TotAirSys

(Gamma)

Ending

4GA/B

M4GA/B

MN4GA/B

4GA/B (master)

4GB With sensor

4GD/E

M4GD/E

MN4GD/E

4GA/B4

MN3E

MN4E

W4GA/B2

W4GB4

MN3S0

MN4S0

4SA/B0

4KA/B

4KA/B (master)

4F

4F (master)

PV5G

GMF

PV5

GMF

PV5S-0

3Q

MV3QR

3MA/B0

3PA/B

P/M/B

NP/NAP

NVP

4G*0EJ

4F*0EX

4F*0E

HMV

HSV

2QV

3QV

SKH

Silencer

TotAirSys (Total Air)

TotAirSys (Gamma)

Ending

MW4G4Block manifold specifications sheet (for T7*)

● Contact

● Quantity

Set

● Delivery date

/

Issued

/

/

Slip No.

Order No.

● Manifold model No.

MW4G40----

● Model No.

● Solenoid position

● Port size

● Wiring method

● Terminal/connector pin array

● Option

● Station No.

● Voltage

Note: There is no right side (R) specification.

When filling in this field, select the model No. from Block configurations (pages 1146 to 1156), pages 1125, 1131, 1132.

Part name		Model No.	Installation position																						Quantity
			1	2	3	4	5	6	7	8	9	10	11	12	13	14	15	16	17	18	19	20	21	22	
End block	NW4G4-E- <div></div> R- <div></div>																								
I/O block	NW4GB2-IN- <div></div> - <div></div>																								
		NW4GB2-OUT- <div></div> -B																							
Wiring block	NW4G4-T7- <div></div>																								
Valve block with solenoid valve	NW4G <div></div> 4 <div></div> 0- <div></div> - <div></div> - <div></div>																								
		NW4G <div></div> 4 <div></div> 0- <div></div> - <div></div> - <div></div>																							
		NW4G <div></div> 4 <div></div> 0- <div></div> - <div></div> - <div></div>																							
		NW4G <div></div> 4 <div></div> 0- <div></div> - <div></div> - <div></div>																							
		NW4G <div></div> 4 <div></div> 0- <div></div> - <div></div> - <div></div>																							
Valve block with masking plate	NW4G <div></div> 4-MP- <div></div> - <div></div> - <div></div>																								
		NW4G <div></div> 4-MP- <div></div> - <div></div> - <div></div>																							
Spacer	Independent supply spacer	W4G4-P- <div></div>																							
	Independent exhaust spacer	W4G4-R- <div></div>																							
Attached product	Silencer (resin)	SLW-15A	List the number of units to be used in the quantity field on the right.																						
	Blanking plug	GWP8-B																							
		GWP10-B																							
		GWP12-B																							

* I/O block is side wiring only. Refer to page 1154 for the model No. of I/O block.

* As one side is for air supply and one side is for exhaust, use the supply spacer or exhaust spacer when operating valves simultaneously.

* As one side is for air supply and one side is for exhaust, partition block and partition plug cannot be used.

1184

CKD