

M4GD1 to 3/M4GE1 to 3 Series

Related products

Related products

● In-stop valve spacer

Specifications

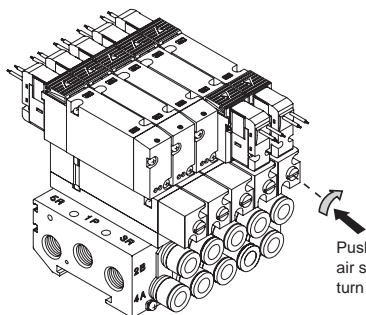
Model No.	P→A/B		A/B→R		Weight g
	C[dm ³ /(s·bar)]	b	C[dm ³ /(s·bar)]	b	
4G1	0.54	0.03	0.82	0.27	17
4G2	1.5	0.17	1.6	0.20	63
4G3	1.9	0.09	2.8	0.16	80

*1: Values with base piping and 2-position valve mounted.

*2: The effective cross-sectional area when discharging residual pressure is 1.0 mm² (reference value).

*3: Effective cross-sectional area S and sonic conductance C are converted as $S \approx 5.0 \times C$.

Attachments: PR check valve 2, body gasket 1



Push to cut off
air supply and
turn to lock

How to order discrete units

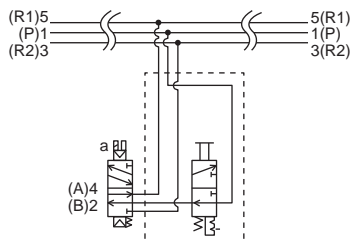
4G1R - IS

4G2R - IS

4G3R - IS

In-stop valve spacer

JIS symbol



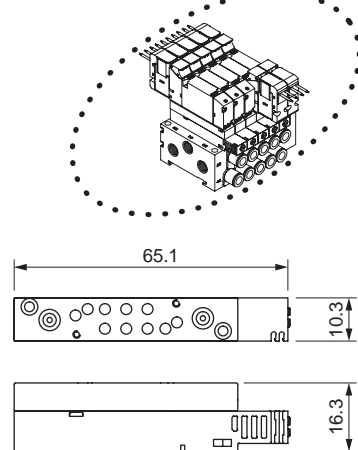
⚠ Precautions for model No. selection

*1: Specify the spacer mounting position and quantity in manifold specifications sheet.

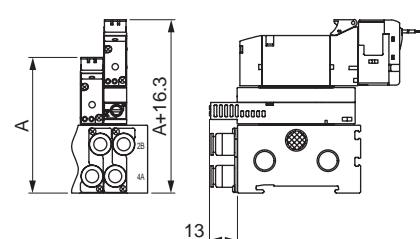
*2: When retrofitting to the reduced wiring manifold, the existing electric wire may be too short. Contact CKD for details.

Dimensions

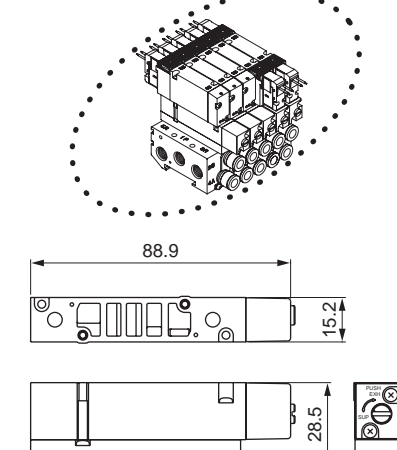
● 4G1



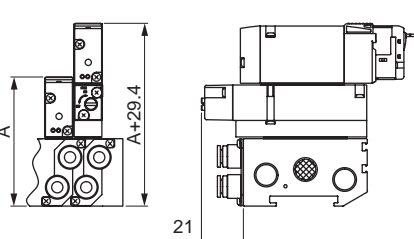
Dimensions when mounted



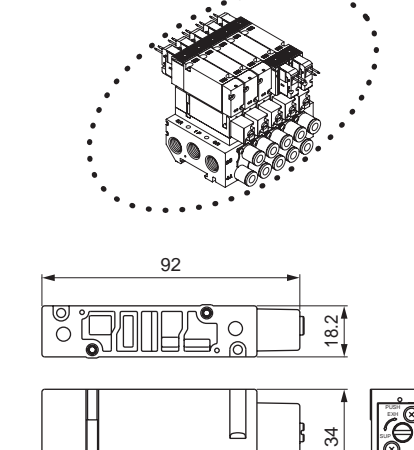
● 4G2



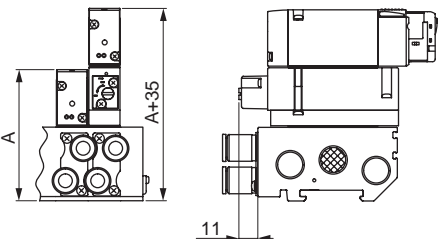
Dimensions when mounted



● 4G3



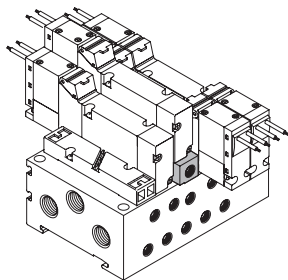
Dimensions when mounted



Note: For A dimensions, check the dimensions of respective specifications.

Related products

● Air supply spacer



Specifications

Model No.	P→A/B		A/B→R		Weight g
	C[dm ³ /(s·bar)]	b	C[dm ³ /(s·bar)]	b	
4G1	0.70	0.23	0.93	0.16	8
4G2	1.6	0.17	1.8	0.16	35
4G3	2.6	0.22	3.1	0.14	56

*1: Values are when a valve is mounted.

*2: Effective cross-sectional area S and sonic conductance C are converted as $S \approx 5.0 \times C$.

How to order discrete units

● Air supply spacer

Air supply spacer model No.

4G 3 R - P - GWS10

A Air supply spacer model No.

B Port size

Code		Valve model No.					
		4GD1	4GE1	4GD2	4GE2	4GD3	4GE3
A Air supply spacer model No.							
1	For 4G1	●					
2	For 4G2			●			
3	For 4G3					●	
B Port size							
Blank	M5 (4G1), Rc1/8 (4G2), Rc1/4 (4G3)	●		●		●	
GWS4	ø4 Push-in fitting	●					
GWS6	ø6 Push-in fitting	●		●			
GWS8	ø8 Push-in fitting			●		●	
GWS10	ø10 Push-in fitting					●	

is not available.

Attachments: Mounting screw 2, PR check valve 2, body gasket 1

⚠ Precautions for model No. selection

*1: Specify the air supply spacer mounting position and quantity in manifold specifications sheet of each catalog.

*2: If the A/B port fitting is the elbow (upward), turn the air supply port of the air supply spacer toward the reverse side ("a" solenoid side).

*3: If the elbow (upward) A/B port fitting is used for the reduced wiring manifold, the air supply spacer cannot be selected.

*4: Combination with the masking plate is not supported.

4GA/B
M4GA/B
MN4GA/B
4GA/B (master)
4GB With sensor
4GD/E
M4GD/E
MN4GD/E
4GA4/B4
MN3E
MN4E
W4GA/B2
W4GB4
MN3S0
MN4S0
4SA/B0
4KA/B
4KA/B (master)
4F
4F (master)
PV5G
GMF
PV5
GMF
PV5S-0
3Q
MV3QR
3MA/B0
3PA/B
P/M/B
NP/NAP
NVP
4G*0EJ
4F*0EX
4F*0E
HNV
HSV
2QV
3QV
SKH
Silencer
TotAirSys (Total Air)
TotAirSys (Gamma)
Ending

M4GD1 to 3/M4GE1 to 3 Series

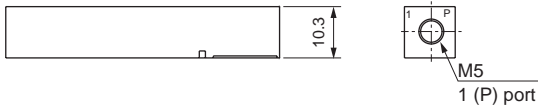
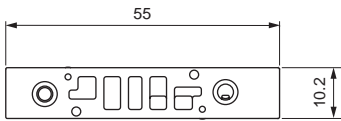
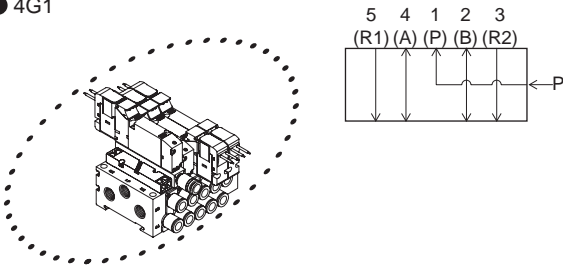
Related products

Related products

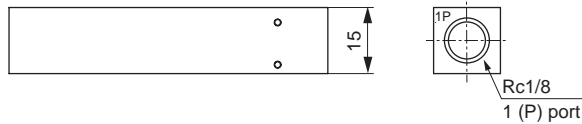
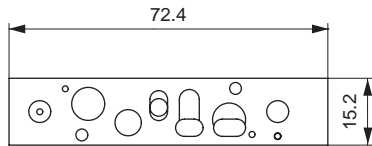
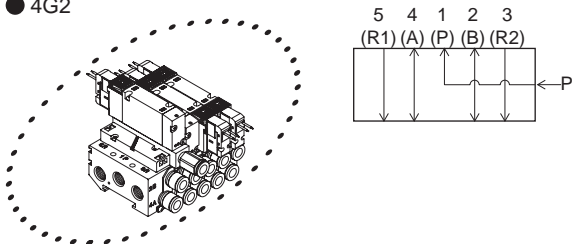
● Air supply spacer

Dimensions

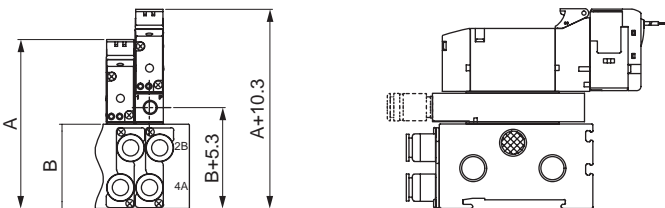
● 4G1



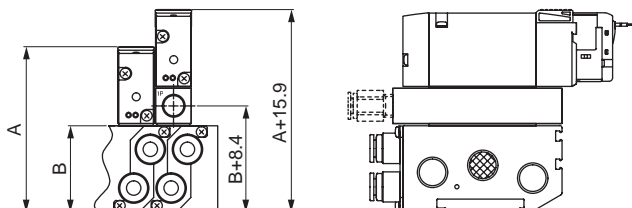
● 4G2



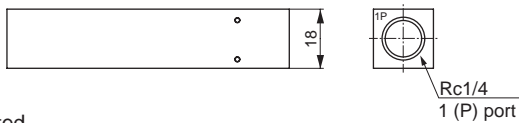
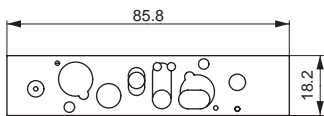
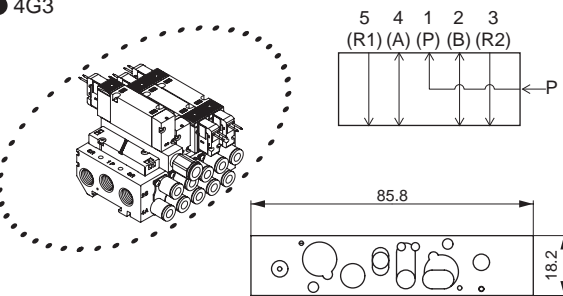
Dimensions when mounted



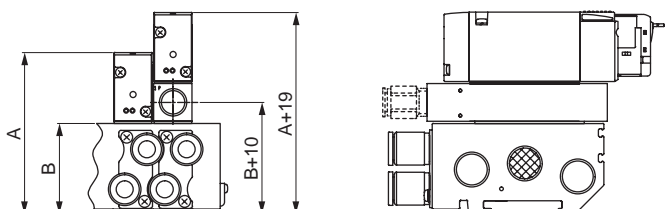
Dimensions when mounted



● 4G3



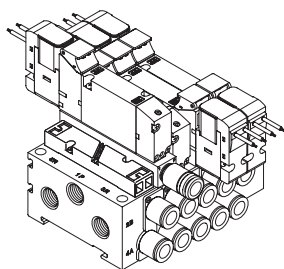
Dimensions when mounted



Note: For A and B dimensions, check the dimensions of respective specifications.

Related products

● Exhaust spacer



Specifications

Model No.	P → A/B		A/B → R		Weight g
	C(dm ³ /(s·bar))	b	C(dm ³ /(s·bar))	b	
4G1	0.94	0.28	0.68	0.33	7
4G2	1.5	0.24	1.9	0.24	34
4G3	3.4	0.21	2.9	0.27	58

*1: Values are when a valve is mounted.

*2: Effective cross-sectional area S and sonic conductance C are converted as $S \approx 5.0 \times C$.

How to order discrete units

● Exhaust spacer

Exhaust spacer model No.

4G 3 R - R - GWS10

A Exhaust spacer model No.

B Port size

Code		Valve model No.					
		4GD1	4GE1	4GD2	4GE2	4GD3	4GE3
A Exhaust spacer model No.							
1	For 4G1	●					
2	For 4G2			●			
3	For 4G3					●	
B Port size							
Blank	M5(4G1), Rc1/8(4G2), Rc1/4(4G3)	●	●	●	●	●	●
GWS4	ø4 push-in fitting	●					
GWS6	ø6 push-in fitting	●	●	●	●	●	●
GWS8	ø8 push-in fitting			●	●	●	●
GWS10	ø10 push-in fitting					●	●

is not available.

Accessories: Mounting screw 2, PR check valve 2, body gasket 1

⚠ Precautions for model No. selection

*1: Specify the exhaust spacer mounting position and quantity on the manifold specifications sheet of each catalog.

*2: If the port A/B fitting is elbow (upward), turn the exhaust port of the exhaust spacer toward the reverse side ("a" solenoid side).

*3: If the elbow (upward) port A/B fitting is used for the reduced wiring manifold, the exhaust spacer cannot be selected.

*4: Combination with the masking plate is not supported.

4GA/B
M4GA/B
MN4GA/B
4GA/B (master)
4GB With sensor
4GD/E
M4GD/E
MN4GD/E
4GA4/B4
MN3E MN4E
W4GA/B2
W4GB4
MN3S0 MN4S0
4SA/B0
4KA/B
4KA/B (master)
4F
4F (master)
PV5G GMF
PV5 GMF
PV5S-0
3Q
MV3QR
3MA/B0
3PA/B
P/M/B
NP/NAP NVP
4G*0EJ
4F*0EX
4F*0E
HMV HSV
2QV 3QV
SKH
Silencer
TotAirSys (Total Air)
TotAirSys (Gamma)
Ending

M4GD1 to 3/M4GE1 to 3 Series

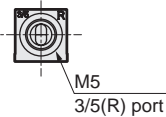
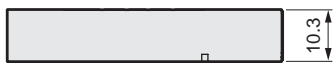
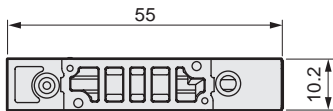
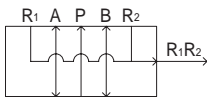
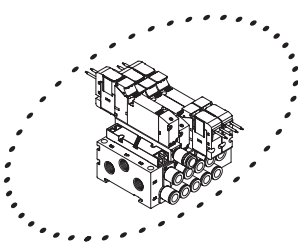
Related products

Related products

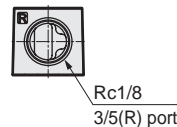
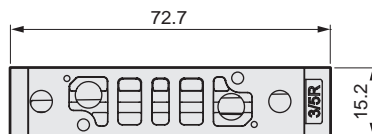
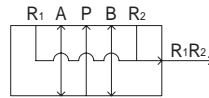
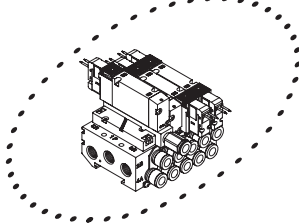
● Exhaust spacer

Dimensions

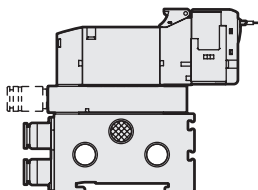
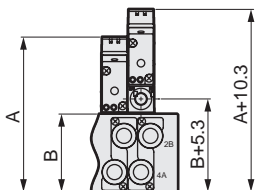
● 4G1



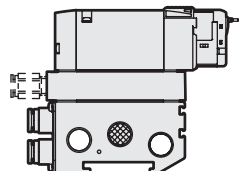
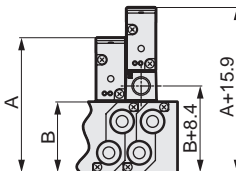
● 4G2



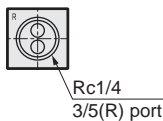
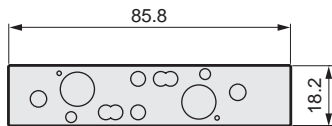
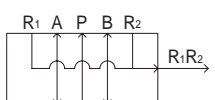
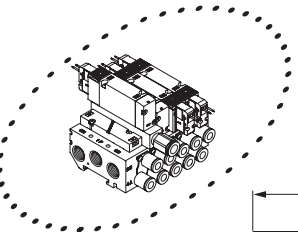
Dimensions when mounted



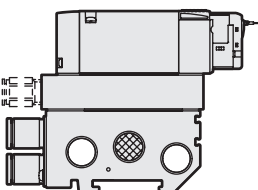
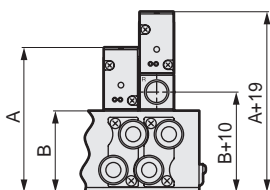
Dimensions when mounted



● 4G3



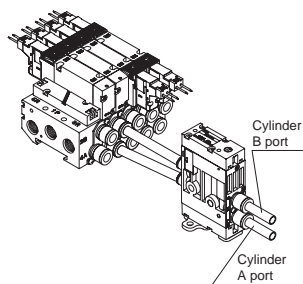
Dimensions when mounted



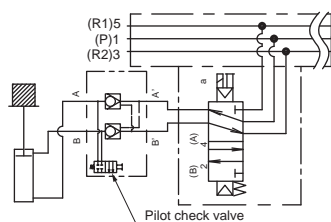
Note: For A and B dimensions, check the dimensions of respective specifications.

Related products

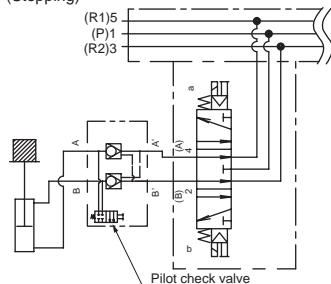
● Pilot check valve



JIS symbol (Position locking)



(Stopping)



Example of leak comparison
All ports closed (solenoid) valve
10 cm³/min or less
Pilot check valve (4G2R-PCS)
0 to 0.3 cm³/min

How to order

● Discrete model No.

4G2R - PCS - C4 - ●

● Manifold model No.

M4G2R - PCS - C4 - ● - **5**

Model No.

Pilot check valve

● A Port size
(*1)

● B Option
(*2)

● C Station No.

Specifications

Item	4G2R-PCS-**-*
Effective cross-sectional area	mm ² 11
Weight	g 200

Code	Description
A Port size	
	Valve side port Cylinder side port
C4	ø4 push-in fitting ø4 push-in fitting
C6	ø6 push-in fitting ø6 push-in fitting
C8	ø8 push-in fitting ø8 push-in fitting
CL6	ø6 push-in fitting ø6 push-in L-fitting (upward)
CL8	ø8 push-in fitting ø8 push-in L-fitting (upward)
B Option	
Blank	None
F	A/B-port filter built in
M	Manual non-locking
D	DIN rail mount
C Station No.	
2	2 stations
to	to
10	10 stations

⚠ Depending on usage conditions, the pilot check valve body may emit resonance noise due to the air flow when the cylinder operates, but this is not an abnormality. Adjust the pipe length and bore size in that case.

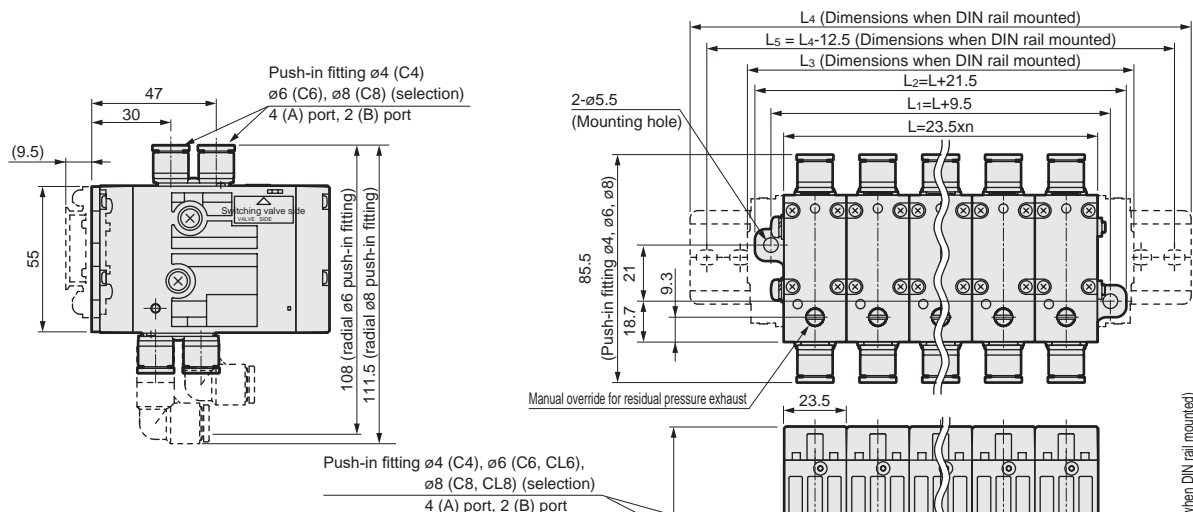
⚠ Precautions for model No. selection

*1: Contact CKD for information on mixing port sizes.

*2: The following applies when blank is selected as an option.

Manual override: Non-locking/locking common,
Mounting method: Direct mounting.

Dimensions



DIN rail length

Station No.	1	2	3	4	5	6	7	8	9	10
L3	50.5	74.0	97.5	121.0	144.5	168.0	191.5	215.0	238.5	262.0
L4	100.0	112.5	137.5	162.5	187.5	212.5	237.5	262.5	287.5	312.5
L5	87.5	100.0	125.0	150.0	175.0	200.0	225.0	250.0	275.0	300.0

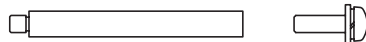
M4GD1 to 3/M4GE1 to 3 Series

Related products

Related products

- Tie rod kit (for pilot check valve)
(For manifold connection and expansion)

4G2R - PCS - TR - V1



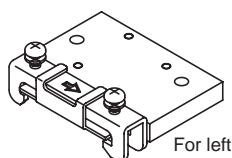
A Type
(*1)

A Type	
V1	For 1 station
V2	For 2 stations
V3	For 3 stations
V4	For 4 stations
V5	For 5 stations

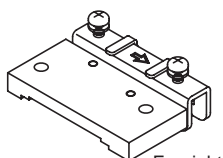
⚠ Precautions for model No. selection

*1: Select the V1 to V5 combination when using six or more stations.

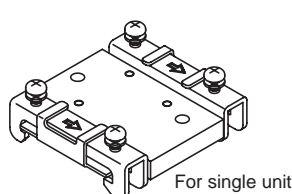
- DIN rail adaptor kit (for pilot check valve)
(The DIN rail adaptor kit is required for the following reassembly)



For left



For right



For single unit

4G2R - PCS - D1

A Type

A Type		DIN rail adaptor kit selection list based on changes in specifications				Content
Description		Change from mounting plate to DIN rail		Add/remove stations with DIN rail mount		
Code		For 1 station	2 or more stations	≥2 stations → 1 station	1 station → ≥2 stations	
D1	For right				● (*2)	DIN rail adaptor (right) 1, thread 2
D2	Right + left		●			DIN rail adaptor (right) 1, DIN rail adaptor (left) 1, thread 4
D3	For single unit	●		●		DIN rail adaptor (single unit) 1, thread 2

*2: When changing from 1 station to 2 or more stations, purchase the DIN rail adaptor for right (D1), and remove the retainer on one side of the current DIN rail adaptor kit (D3).

- Push-in cartridge fitting
ø4L/ø6L/ø8L/ø10L type (short elbow)

4G1R-JOINT-CL4/CL6

4G2R-JOINT-CL6/CL8

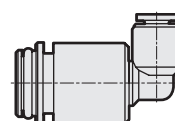
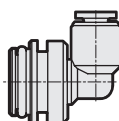
4G3R-JOINT-CL8/CL10

ø4L/ø6L/ø8L/ø10L (long elbow)

4G1R-JOINT-CLL4/CLL6

4G2R-JOINT-CLL6/CLL8

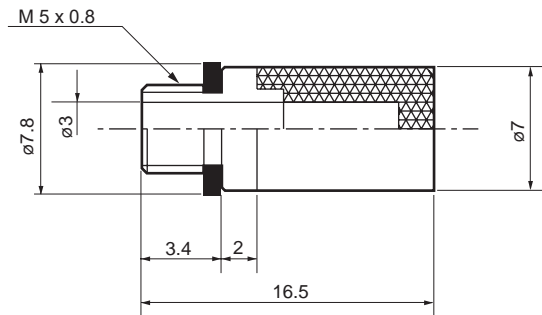
4G3R-JOINT-CLL8/CLL10



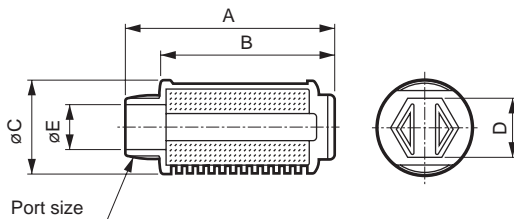
Related products

● Silencer

● SLM-M5



● SLW-6A, 8A, 10A, 10L



*1: Select the silencer mounting after confirming the dimensions.

* SLW-8S for the 2:M4GD2 DIN rail mount. Interference occurs if SLW-8A is used.

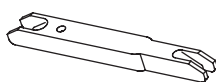
Code	Noise reduction effect dB (A)	Eff. X-sectional area mm ²	A	B	C	D	E	Port size
Model No.								
SLW-6A	30 or more	10	34.5	28	16.5	10	7	R1/8
SLW-8A	30 or more	20	44.5	36	20	13	8.5	R1/4
SLW-10A	30 or more	30	58.5	48.5	25.5	17	12	R3/8
SLW-10L	30 or more	60	68.2	58.4	28	19	12	R3/8

● Plug type

Part name	Model No.	Compatible bore size	Appearance
Threaded plug	4G1R-M5P	M5	(FPL-M5)
	4G2R-ØP	Rc1/8	Hexagon socket plug
	4G3R-ØP	Rc1/4	
	4G4R-10P	Rc3/8	

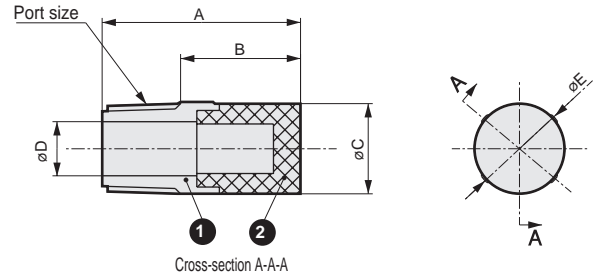
● Push-in fitting tube remover

For ø1.8/ø4 push-in fitting
4GR-EOT18-4



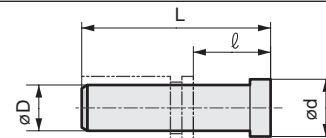
For ø4/ø6 push-in fittings
4GR-EOT4-6

● SLW-6S, 8S



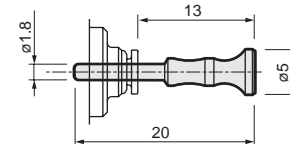
Model No.	Port size	A	B	C	D	E
SLW-6S	R 1/8	22	13.3	10.5	6	10.5
SLW-8S	R 1/4	28	19	14.8	9	15.4

● Blanking plug



Model No.	D	L	ø	d
GWP 4-B	ø4	27	16	6
GWP 6-B	ø6	29	11.5	8
GWP 8-B	ø8	33	14	10
GWP 10-B	ø10	40	18.5	12

PG-P2-B (for ø1.8)

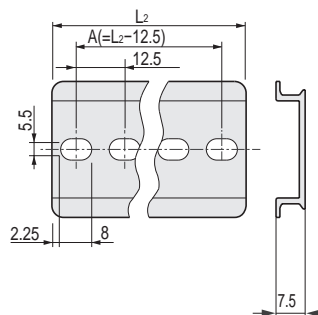


● DIN rail

N4GR-BAA



Rail length



*1: Rail lengths not included in the list are made to order products.

L1: Manifold length	L2: Rail length	A: Mounting pitch
35 47.5 or less	87.5	75
Over 47.5 to 60	100	87.5
60	72.5	112.5
72.5	85	125
85	97.5	137.5
97.5	110	150
110	122.5	162.5
122.5	135	175
135	147.5	187.5
147.5	160	200
160	172.5	212.5
172.5	185	225
185	197.5	237.5
197.5	210	250
210	222.5	262.5
222.5	235	275
235	247.5	287.5
247.5	260	300
260	272.5	312.5
272.5	285	325
285	297.5	337.5
297.5	310	350
310	322.5	362.5
322.5	335	375
335	347.5	387.5
347.5	360	400
360	372.5	412.5
372.5	385	425
385	397.5	437.5
397.5	410	450
410	422.5	462.5
422.5	435	475
435	447.5	487.5
447.5	460	500
460	472.5	512.5
472.5	485	525
485	497.5	537.5
497.5	510	550

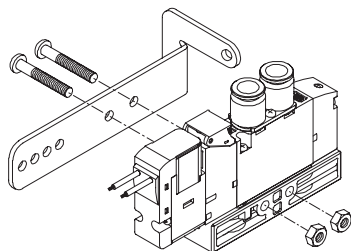
If the length exceeds 510,
calculate using a multiple of 12.5.

M4GD1 to 3/M4GE1 to 3 Series

Related parts

Related parts

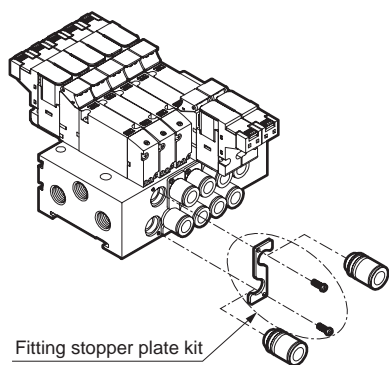
(1) Mounting plate (P) kit



Mounting (P) kit

Model	Kit model No.	Set parts
3GD1/4GD1	4G1R-MOUNT-PLATE-KIT	Mounting plate, set screw 2, nut 2
3GD2/4GD2	4G2R-MOUNT-PLATE-KIT	Mounting plate, set screw 2
3GD3/4GD3	4G3R-MOUNT-PLATE-KIT	Mounting plate, set screw 2

(2) Single cartridge push-in fitting related part



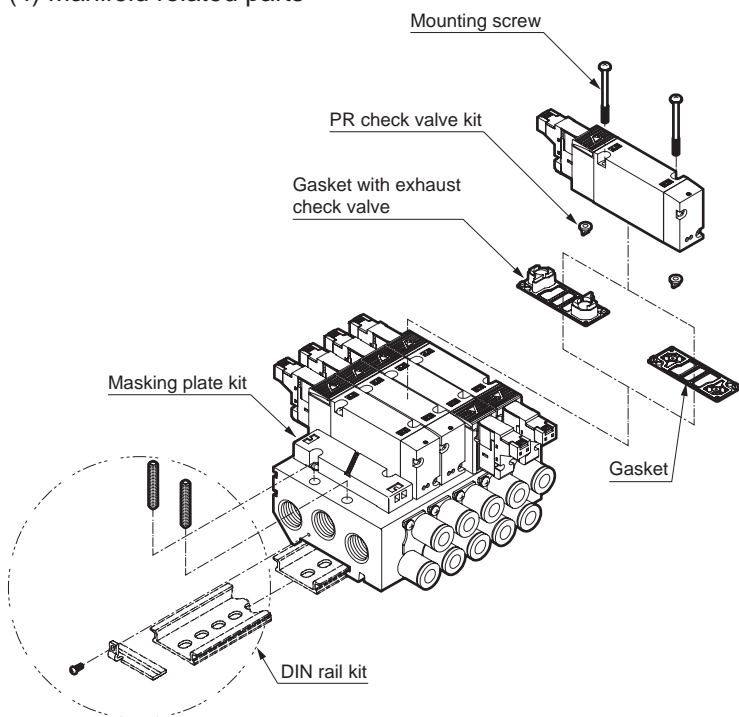
Fitting stopper plate kit

Model	Kit model No.
M4G1	4G1R-JNT-STP-PLATE-KIT
M4G2	4G2R-JNT-STP-PLATE-KIT
M4G3	4G3R-JNT-STP-PLATE-KIT

Fitting stopper plate kit

Related parts

(4) Manifold related parts



Masking plate kit

Model	Model No.	Content	Remarks
M3G1/M4G1	4G1R-MP	Masking plate Gasket Mounting screws 2	4G3R-MP has two PR check valves included.
M3G1/M4G1	4G1R-MPC (*)		
M3G2/M4G2	4G2R-MP		
M3G3/M4G3	4G3R-MP		

* For pilot exhaust atmosphere release

Gasket

Model	Part model No.
3G1/4G1	4G1R-GASKET
3G1/4G1 (For masking plate)	4G1R-MP-GASKET
3G2/4G2	4G2R-GASKET
3G2/4G2 (For masking plate)	4G2R-MP-GASKET
3G3/4G3	4G3R-GASKET

Gasket with exhaust check valve

Model	Part model No.
3G1/4G1	4G1R-CHECK-VALVE
3G2/4G2	4G2R-CHECK-VALVE
3G3/4G3	4G3R-CHECK-VALVE

PR check valve kit (2 per set)

Model	Kit model No.
3G1/4G1	4G1R-PR
3G2/4G2	4G2R-PR
3G3/4G3	4G3R-PR

Mounting screw (10 per set)

Model	Part model No.
3G1/4G1	4G1R-SET-SCREW
3G2/4G2	4G2R-SET-SCREW
3G3/4G3	4G3R-SET-SCREW

DIN rail kit

Model	Model No.	Content
M4G1	4GA1R-BAA[length]- D	DIN rail, mounting screw 2 Lock nut 2
	4GB1R-BAA[length]- D	
M4G2	4GA2R-BAA[length]- D	DIN rail/holder 2 Tapping screw 2, mounting screw 4
	4GB2R-BAA[length]- D	
M4G3	4GA3R-BAA[length]- D	
	4GB3R-BAA[length]- D	

Specify the length "0" when the DIN rail is not required.

Set the DIN rail length, referring to the working manifold dimensions and DIN rail length quick reference list (page 583).

M4GD1 to 3/M4GE1 to 3 Series

Related parts

Related parts

(5) Sub-plate

How to order

● 4GD piping adapter



		A Model No.		
		4G1	4G2	4G3
Code	Description			
B Port size (P/R1/R2 port)				
M5	M5	●		
06	Rc1/8		●	
08	Rc1/4			●

		A Model No.		
		4G1	4G2	4G3
Code	Description			
C Option				
P	With mounting plate (attachment)	●	●	●

		A Model No.		
		4G1	4G2	4G3
Code	Description			
D Pilot exhaust method				
Blank	Common exhaust (Pilot exhaust check valve built-in)	●	●	●
C	Atmosphere release	○	○	○

is not available.
○ indicates a custom order.

● 4GE single sub-plate



		A Model No.		
		4G1	4G2	4G3
Code	Description			
B Port size (A/B/P/R1/R2-port)				
06	Rc1/8	●		
08	Rc1/4		●	●
10	Rc3/8			●

		A Model No.		
		4G1	4G2	4G3
Code	Description			
C Option				
F	A/B port filter integrated *1	●	●	●

		A Model No.		
		4G1	4G2	4G3
Code	Description			
D Pilot exhaust method				
Blank	Common exhaust (Pilot exhaust check valve built-in)	●	●	●
C	Atmosphere release	○	○	○

*1: A filter is built into the P-port as standard.

is not available.
○ indicates a custom order.

Related parts

(6) Manifold sub-plate kit individual wiring

● M4GD sub-plate

M4GD1 R - 00 - **2**

A Model No.

B Pilot exhaust method

C Station No.

Code	Description
A Model No.	
M4GD1	Metal base, 4G1 size, body piping
M4GD2	Metal base, 4G2 size, body piping
M4GD3	Metal base, 4G3 size, body piping

B Pilot exhaust method	
Blank	Common exhaust (Pilot exhaust check valve built-in)
C	Atmosphere release (*1)

C Station No.	
2	2 stations
to	to
20	Refer to the specifications page for the max. station number.

*1 Available as custom order.

● M4GE1 sub-plate

M4GE1R - **C4** - **D** - **2**

A Port size

B Option

C Pilot exhaust method

D Mount

E Station No.

Code	Description	
A Port size		
Port	4(A), 2(B) port	P/R1/R2 port
C4	ø4 push-in fitting	Rc1/8
C6	ø6 push-in fitting	
CL4	ø4 push-in L-fitting (upward)	
CL6	ø6 push-in L-fitting (upward)	
CD4	ø4 push-in L-fitting (downward)	
CD6	ø6 push-in L-fitting (downward)	
M5	M5	

B Option	
Blank	
F	A/B port filter integrated (*1)

C Pilot exhaust method	
Blank	Common exhaust (Pilot exhaust check valve built-in)
C	Atmosphere release (*2)

D Mount	
Blank	Direct mount
D	DIN rail mount (*3)

E Station No.	
2	2 stations
to	to
20	Refer to the specifications page for the max. station number.

*1: A filter is built into the P-port as standard.

*2: Available as custom order.

*3: The DIN rail kit needs to be prepared separately.

4GA/B
M4GA/B
MN4GA/B
4GA/B (master)
4GB With sensor
4GD/E
M4GD/E
MN4GD/E
4GA4/B4
MN3E
MN4E
W4GA/B2
W4GB4
MN3S0
MN4S0
4SA/B0
4KA/B
4KA/B (master)
4F
4F (master)
PV5G
GMF
PV5
GMF
PV5S-0
3Q
MV3QR
3MA/B0
3PA/B
P/M/B
NP/NAP
NVP
4G*0EJ
4F*0EX
4F*0E
HMV
HSV
2QV
3QV
SKH
Silencer
TotAirSys (Total Air)
TotAirSys (Gamma)
Ending

M4GD1 to 3/M4GE1 to 3 Series

Related parts

Related parts

(6) Manifold sub-plate kit individual wiring

● M4GE2/3 sub-plate

M4GE2 R - **C4** - **2**

A Model No.

B Port size

C Option

D Pilot exhaust method

E Station No.

Code	Description
A Model No.	
M4GE2	Metal base 4G2 size base piping
M4GE3	Metal base 4G3 size base piping
B Port size	
Port	4(A), 2(B) port
C4	ø4 push-in fitting
C6	ø6 push-in fitting
C8	ø8 push-in fitting
C10	ø10 push-in fitting
CL6	ø6 push-in L-fitting (upward)
CL8	ø8 push-in L-fitting (upward)
CL10	ø10 push-in L-fitting (upward)
CD6	ø6 push-in L-fitting (downward)
CD8	ø8 push-in L-fitting (downward)
CD10	ø10 push-in L-fitting (downward)
06	Rc1/8
08	Rc1/4
C Option	
Blank	
F	A/B port filter built in (*1)
D Pilot exhaust method	
Blank	Common exhaust (Pilot exhaust check valve built-in)
C	Atmosphere release (*2)
E Station No.	
2	2 stations
to	to
20	Refer to the specifications page for the max. station number.

A Model No.	
M4GE2	M4GE3
P/R1/R2 port (1) = Rc1/4 (2) = Rc3/8	
(1)	(2)
(1)	(2)
(1)	(2)
(1)	(2)
(1)	(2)
(1)	(2)
(1)	(2)
(1)	(2)
(1)	(2)
(1)	(3)

*1: A filter is built into the P-port as standard.

*2: Available as custom order.

*3: Direct mount/DIN rail mount are common.

*4: The DIN rail kit must be prepared separately.

M4GD1 to 3/M4GE1 to 3 Series

Related parts

Related parts

(7) Manifold sub-plate kit reduced wiring

● M4GD sub-plate

M4GD1 R - 00 - **T*** - - **2**

A Model No.

B Reduced wiring connection

C Mount

D Station No.

Code	Description
A Model No.	
M4GD1	Metal base, 4G1 size, body piping
M4GD2	Metal base, 4G2 size, body piping
M4GD3	Metal base, 4G3 size, body piping
B Reduced wiring connection	
T10	Common terminal block (M3 thread) Left-side spec
T10R	Right-side spec
T11	Common terminal block (clamping) Left-side spec
T11R	Right-side spec
T30	D sub-connector Left-side spec
T30R	Right-side spec
T50	20-pin flat cable connector (with power supply terminal) Left-side spec
T50R	Right-side spec
T51	20-pin flat cable connector (without power supply terminal) Left-side spec
T51R	Right-side spec
T52	10-pin flat cable connector (without power supply terminal) Left-side spec
T52R	Right-side spec
T53	26-pin flat cable connector (without power supply terminal) Left-side spec
T53R	Right-side spec
T56	20-pin flat cable connector (without power supply terminal) For serial transmission device unit OPP3 connection Left-side spec
T81	For serial transmission device (adapter) station OPP7 connection (16-point output) Left-side spec
T82	For serial transmission device (adapter) station OPP7 connection (32-point output) Left-side spec
C Mount *1	
Blank	Direct mount
D	DIN rail mount (*2)
D Station No.	
2	2 stations
to	to
20	Refer to the specifications page for the max. station number.

1: For T8, select one mounting.

The only alternative to T8* is blank.

*2: The DIN rail kit must be prepared separately.

4GA/B
M4GA/B
MN4GA/B
4GA/B (master)
4GB
With sensor
4GD/E
M4GD/E
MN4GD/E
4GA4/B4
MN3E
MN4E
W4GA/B2
W4GB4
MN3S0
MN4S0
4SA/B0
4KA/B
4KA/B (master)
4F
4F (master)
PV5G
GMF
PV5
GMF
PV5S-0
3Q
MV3QR
3MA/B0
3PA/B
P/M/B
NP/NAP
NVP
4G*0EJ
4F*0EX
4F*0E
HNV
HSV
2QV
3QV
SKH
Silencer
TotAirSys (Total Air)
TotAirSys (Gamma)
Ending

M4GD1 to 3/M4GE1 to 3 Series

Related parts

Related parts

(7) Manifold sub-plate kit reduced wiring

● M4GE sub-plate

M4GE1 R - CL4 - T10 - - - 2

A Model No.

B Port size

C Reduced wiring connection

D Option

E Mount

F Station No.

Code	Description
A Model No.	
M4GE1	Metal base 4G1 size base piping
M4GE2	Metal base 4G2 size base piping
M4GE3	Metal base 4G3 size base piping

B Port size	
Port	4(A), 2(B) port
C4	ø4 push-in fitting
C6	ø6 push-in fitting
C8	ø8 push-in fitting
C10	ø10 push-in fitting
CL4	ø4 push-in L-fitting (upward)
CL6	ø6 push-in L-fitting (upward)
CL8	ø8 push-in L-fitting (upward)
CL10	ø10 push-in L-fitting (upward)
CD4	ø4 push-in L-fitting (downward)
CD6	ø6 push-in L-fitting (downward)
CD8	ø8 push-in L-fitting (downward)
CD10	ø10 push-in L-fitting (downward)
M5	M5
06	Rc1/8
08	Rc1/4

C Reduced wiring connection		
T10	Common terminal block (M3 thread)	Left-side spec
T10R		Right-side spec
T11	Common terminal block (clamping)	Left-side spec
T11R		Right-side spec
T30	D sub-connector	Left-side spec
T30R		Right-side spec
T50	20-pin flat cable connector (with power supply terminal)	Left-side spec
T50R		Right-side spec
T51	20-pin flat cable connector (without power supply terminal)	Left-side spec
T51R		Right-side spec
T52	10-pin flat cable connector (without power supply terminal)	Left-side spec
T52R		Right-side spec
T53	26-pin flat cable connector (without power supply terminal)	Left-side spec
T53R		Right-side spec
T56	20-pin flat cable connector (without power supply terminal) For serial transmission device unit OPP3 connection	Left-side spec
T81	For serial transmission device (adapter) station OPP7 connection (16-point output)	Left-side spec
T82	For serial transmission device (adapter) station OPP7 connection (32-point output)	Left-side spec

D Option	
Blank	
F	A/B port filter integrated *1

E Mount *2	
Blank	Direct mount
D	DIN rail mount (*3)

F Station No.	
2	2 stations
to	to
20	Refer to the specifications page for the max. station number.

*1: A filter is built into the P-port as standard.

2: For T8, select one mounting.

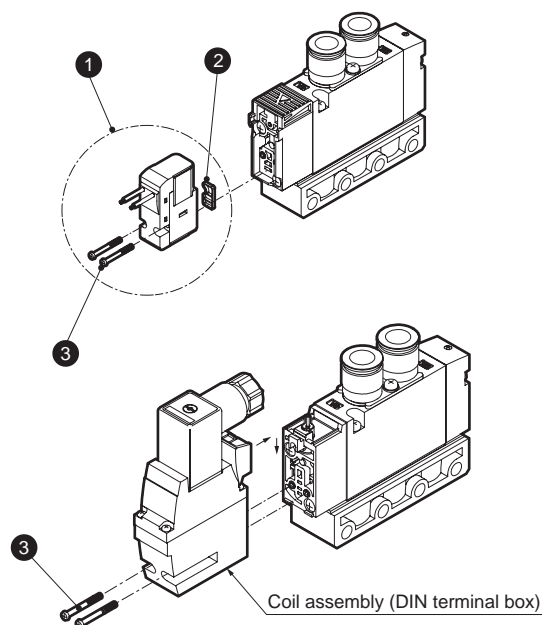
The only alternative to T8* is blank.

*3: The DIN rail kit must be prepared separately.

A Model No.		
M4GE1	M4GE2	M4GE3
P/R1/R2 port (1) = Rc1/8 (2) = Rc1/4 (3) = Rc3/8		
(1)	(2)	
(1)	(2)	(3)
	(2)	(3)
		(3)
(1)		
(1)	(2)	
	(2)	(3)
		(3)
(1)		
(1)	(2)	
	(2)	(3)
		(3)
(1)		
	(2)	
		(3)

Related parts

(8) Coil assembly



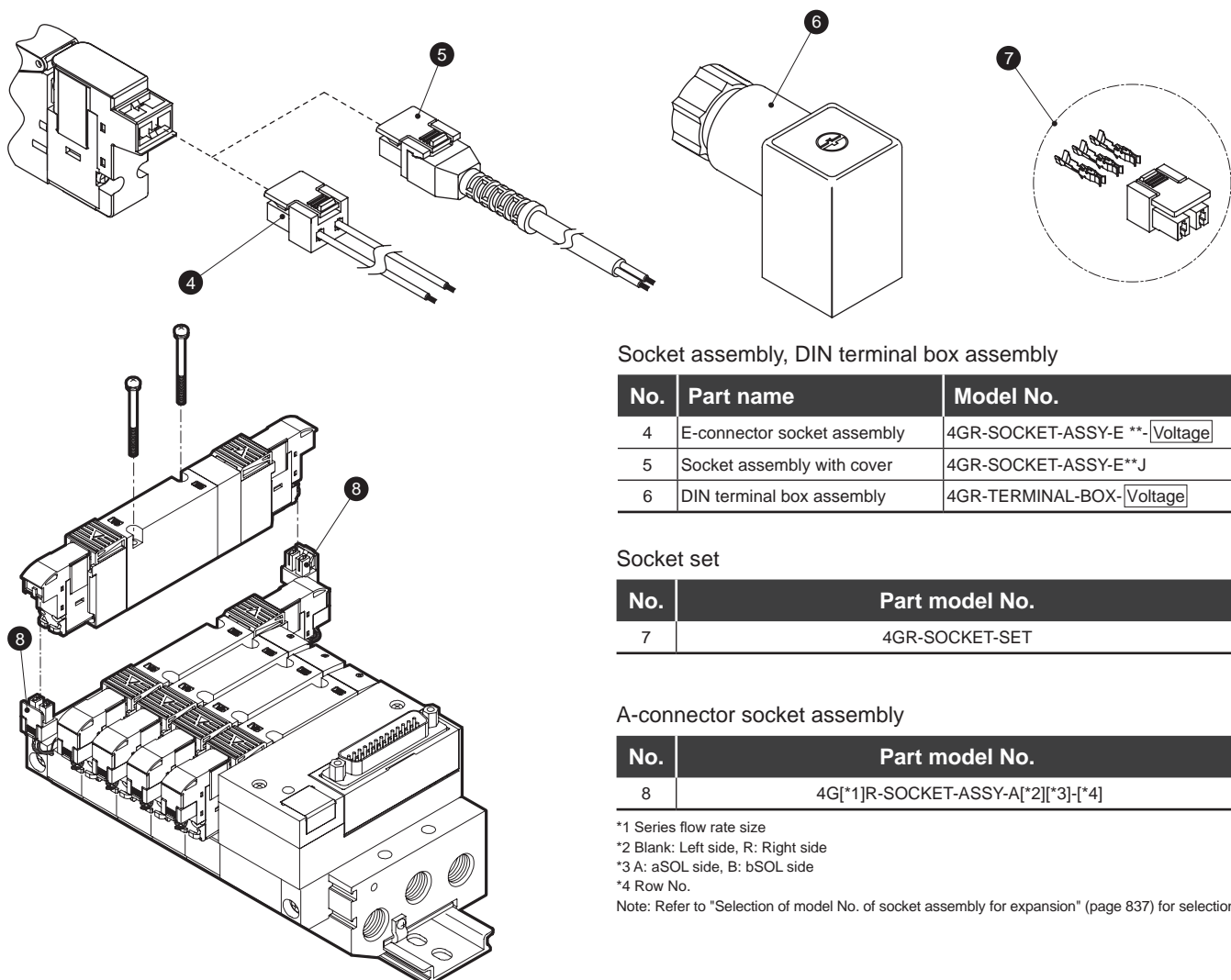
Coil assembly

No.	Part name	Model No.
1	Coil assembly	4GR-[electrical connections]-[]-COIL-[voltage]
		Blank: Standard A: Ozone proof
		E* : E-connector E*J : Socket with cover B* : DIN terminal box Blank : Grommet lead wire
		B includes the DIN terminal box. BN does not include the DIN terminal box.

Coil parts

No.	Part name	Part model No.
2	Coil gasket	4GR-COIL-GASKET
3	Mounting screw	4GR-COIL-SET-SCREW

(9) Lead wire related parts



Socket assembly, DIN terminal box assembly

No.	Part name	Model No.
4	E-connector socket assembly	4GR-SOCKET-ASSY-E *- [Voltage]
5	Socket assembly with cover	4GR-SOCKET-ASSY-E**J
6	DIN terminal box assembly	4GR-TERMINAL-BOX-[Voltage]

Socket set

No.	Part model No.
7	4GR-SOCKET-SET

A-connector socket assembly

No.	Part model No.
8	4G[*1]R-SOCKET-ASSY-A[*2][*3]-[*4]

*1 Series flow rate size

*2 Blank: Left side, R: Right side

*3 A: aSOL side, B: bSOL side

*4 Row No.

Note: Refer to "Selection of model No. of socket assembly for expansion" (page 837) for selection.

4GA/B
M4GA/B
MN4GA/B
4GA/B (master)
4GB With sensor
4GD/E
M4GD/E
MN4GD/E
4GA4/B4
MN3E
MN4E
W4GA/B2
W4GB4
MN3S0
MN4S0
4SA/B0
4KA/B
4KA/B (master)
4F
4F (master)
PV5G
GMF
PV5
GMF
PV5S-0
3Q
MV3QR
3MA/B0
3PA/B
P/M/B
NP/NAP
NVP
4G*0EJ
4F*0EX
4F*0E
HMV
HSV
2QV
3QV
SKH
Silencer
TotAirSys (Total Air)
TotAirSys (Gamma)
Ending