

INSTRUCTION MANUAL

Simplified Floating Joint

FK Series

- Please read this instruction manual carefully before using this product, particularly the section describing safety.
- Retain this instruction manual with the product for further consultation whenever necessary.

For Safety Use

To use this product safely, basic knowledge of pneumatic equipment, including materials, piping, electrical system and mechanism, is required (to the level pursuant to JIS B 8370 Pneumatic System Rules).

We do not bear any responsibility for accidents caused by any person without such knowledge or arising from improper operation.

Our customers use this product for a very wide range of applications, and we cannot keep track of all of them. Depending on operating conditions, the product may fail to operate to maximum performance, or cause an accident. Thus, before placing an order, examine whether the product meets your application, requirements, and how to use it.

This product incorporates many functions and mechanisms to ensure safety. However, improper operation could result in an accident. To prevent such accidents, **read this operation manual carefully for proper operation.**

Observe the cautions on handling described in this manual, as well as the following instructions:

CAUTION :

- Before performing an overhaul inspection on the actuator, deactivate residual pressure completely.
- While the actuator is operating, do not step into or place hands in the driving mechanism.
- To prevent an electric shock, do not touch the electric wiring connections (exposed live parts) of the actuator equipped with a solenoid valve or switch.
Perform an overhaul inspection with the power off. Also, do not touch these live parts with wet hands.

INDEX

FK Series

Simplified Floating Joint

Manual No. SM-292056-A

1. SPECIFICATION	
1.1 Product Specifications	3
2. CAUTION	3
3. PARTS LIST	4
4. HOW TO ORDER	5

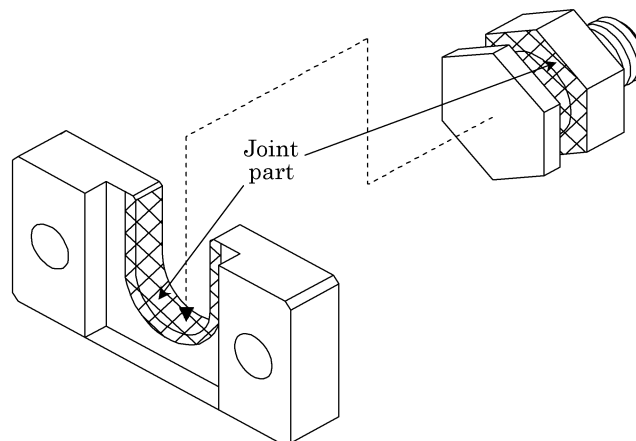
1. SPECIFICATION

1.1 Product Specifications

Item		Allowable load (N)	Thread size
Model			Thread nominal×pitch
Male thread	Female thread		
FK-M3-N	FK-M3	63	M3×0.5
FK-M4-N	FK-M4	110	M4×0.7
FK-M5-N	FK-M5	179	M5×0.8
FK-M6-N	FK-M6	253	M6×1.0
	FK-M8×1.0	462	M8×1.0
FK-M8-N	FK-M8×1.25		M8×1.25
FK-M10-N		734	M10×1.5
	FK-M10		M10×1.25
—	FK-M12	1069	M12×1.5
—	FK-M14	1466	M14×1.5
FK-M16-N		2003	M16×2.0
	FK-M16		M16×1.5
—	FK-M18-N	2448	M18×1.5
FK-M20-N	—	3130	M20×2.5
—	FK-M22	3896	M22×1.5
—	FK-M26	6219	M26×1.5

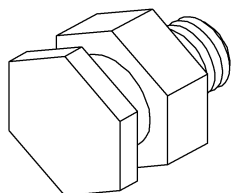
2. CAUTION

- 1) When connecting the object to be driven and the cylinder rod with the simplified floating joint, tighten securely at a torque that matches thread size. If connection may come loose during use, fix with a pin or apply adhesive to prevent loosening.
- 2) The screw section can be turned but is not a rotary joint. Do not use this for rotary purposes.
- 3) If the allowable load is exceeded, damage or operation faults may occur. Use within the allowable load.
- 4) Abrasion is controlled by applying grease to the joint part.
(Refer to the following diagram.)

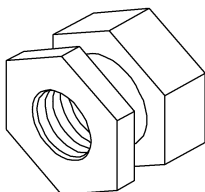




3. PARTS LIST

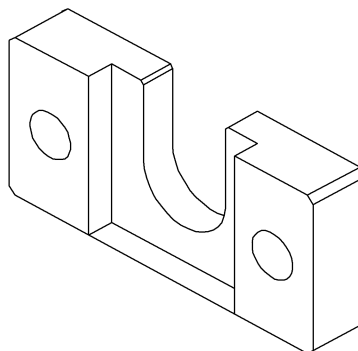


Male thread type



Female thread type

Bracket (1)

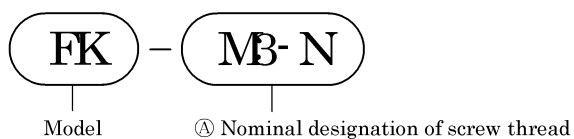


Bracket (2)

Parts name	Material	Treatment
Bracket(1)	SGD400-D	Nickeling
Bracket(2)	SGD400-D	Nickeling

4. HOWTO ORDER

- Simplified floating joint



Symbol	Descriptions	
M3-N	M3×0.5	Male thread type
M4-N	M4×0.7	
M5-N	M5×0.8	
M6-N	M6×1.0	
M8-N	M8×1.25	
M10-N	M10×1.5	
M16-N	M16×2.0	
M20-N	M20×2.5	
M3	M3×0.5	Female thread type
M4	M4×0.7	
M5	M5×0.8	
M6	M6×1.0	
M8×1.0	M8×1.0	
M8×1.25	M8×1.25	
M10	M10×1.25	
M12	M12×1.5	
M14	M14×1.5	
M16	M16×1.5	
M18	M18×1.5	
M22	M22×1.5	
M26	M26×1.5	