

## INSTRUCTION MANUAL CYLINDER WITH GUIDE AIR CUSHIONED STG-C Series

- Please read this instruction manual carefully before using this product, particularly the section describing safety.
- Retain this instruction manual with the product for further consultation whenever necessary.

## For Safety Use

To use this product safely, basic knowledge of pneumatic equipment, including materials, piping, electrical system and mechanism, is required (to the level pursuant to JIS B 8370 Pneumatic System Rules).

We do not bear any responsibility for accidents caused by any person without such knowledge or arising from improper operation.

Our customers use this product for a very wide range of applications, and we cannot keep track of all of them. Depending on operating conditions, the product may fail to operate to maximum performance, or cause an accident. Thus, before placing an order, examine whether the product meets your application, requirements, and how to use it.

This product incorporates many functions and mechanisms to ensure safety. However, improper operation could result in an accident. To prevent such accidents, **read this operation manual carefully for proper operation.**

Observe the cautions on handling described in this manual, as well as the following instructions:

### **CAUTION :**

- Before performing an overhaul inspection on the actuator, deactivate residual pressure completely.
- While the actuator is operating, do not step into or place hands in the driving mechanism.
- To prevent an electric shock, do not touch the electric wiring connections (exposed live parts) of the actuator equipped with a solenoid valve or switch. Perform an overhaul inspection with the power off. Also, do not touch these live parts with wet hands.

# INDEX

STG-C Series  
Cylinder With Guide  
Air Cushioned  
Manual No. SM-415654-A

- 1. UNPACK
- 2. INSTALLATION
  - 2.1 Installati
  - 2.4 Switch installa
- 3. OPERATION
  - 3.1 Operating the Cylin
  - 3.2 How to us
- 4. MAINTENANCE
  - 4.1 Periodical
  - 4.2 Trouble Shootin
  - 4.3 Disass
- 5. HOW TO ORDER
  - 5.1 Product Number Co
  - 5.2 How to
- 6. SPECIFICATION
  - 6.1 Cylinder Specificat
  - 6.2 Switch Sp

## 1. UNPACKING

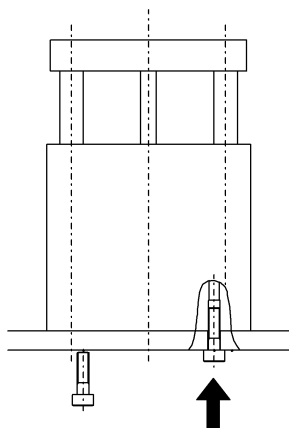
- 1) Make sure that the type No. on the nameplate of the delivered Super Compact Cylinder matches the type No. you ordered.
- 2) Check the appearance for any damage.
- 3) Stop up the piping port with a sealing plug to prevent the entry of foreign substances into the cylinder. Remove the sealing plug before piping.

## 2. INSTALLATION

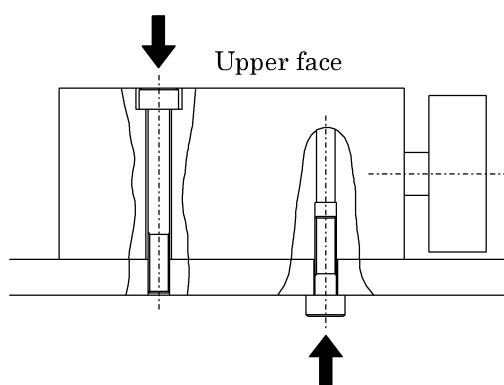
### 2.1 Installation

- 1) The Ambient temperature for this cylinder is  $-10$  to  $60^{\circ}\text{C}$ (Standard). Always operate the cylinder within this temperature range.
- 2) Install cylinder body with a hexagon socket head cap screw directly.

#### ● Bottom



#### ● Side mounting

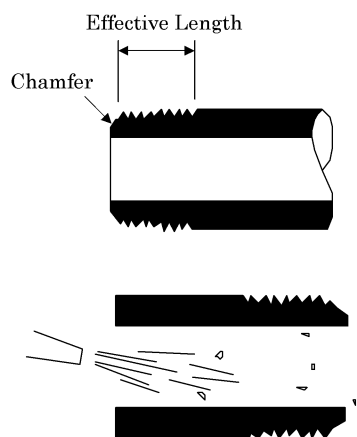


Note) In case of the installation of the body by a through bolt, tighten by the tightening torque in the bellow table.

Tube bore (mm)	Tightening torque (N·m)
16 dia.	2.33
20 dia.・25 dia.	4.52
32 dia.・40 dia.	7.08
50 dia.・63 dia.	15.18

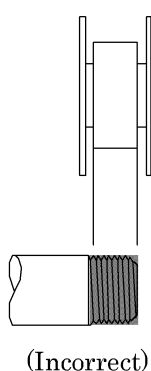
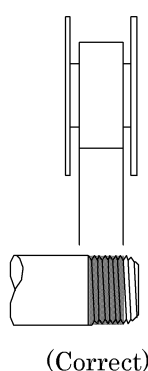
## 2.2 Piping

- 1) For piping beyond the filter, use pipes that are tough against corrosion such as galvanized pipes, nylon tubes, rubber tubes, etc.
- 2) See to it that the pipe connecting cylinder and solenoid valve has effective sectional area which is needed for the cylinder to drive at the specified speed.
- 3) Install filter preferably adjacent to the upper-stream to the solenoid valve for eliminating rust, foreign substance in the drain of the pipe.
- 4) Be sure observe the effective thread length of gas pipe and give a chamfer of approx. 1/2 pitch from the threaded end.
- 5) Flush air into the pipe to blow out foreign substances and chips before piping.

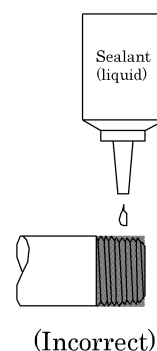
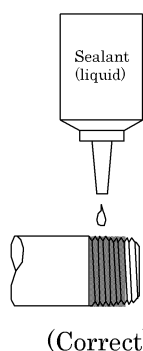


- 6) Refrain from applying sealant or sealing tape approx. two pitches of thread off the tip of pipe to avoid residual substances from falling into piping system.

### ● Seal Tape



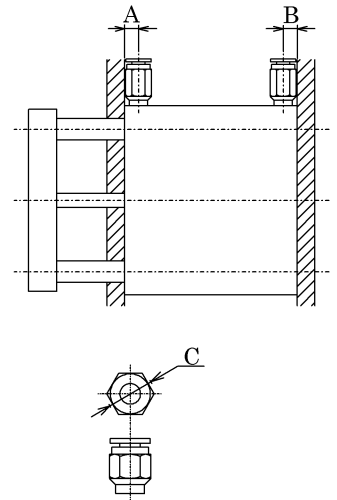
### ● Sealant (liquid)





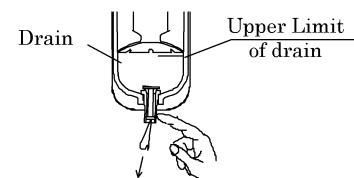
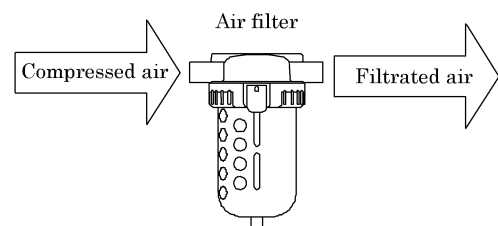
- 7) Because the usable piping joint has limitations, for using it, see the note below.

Descriptions Tube bore (mm)	Port size	Port dimension		Compatible joints	Joint OD
		A	B		C dia.
16 dia.	M5	12	7.5	SC3W-M5-4·6 GWS4-M5-S GWS4-M5 GWL4-M5 GWL6-M5 GWS6-M5	12 mm or less
20 dia.	Rc1/8	10.5	8.5	SC3W-M5-4 GWS4-M5 SC3W-M5-6 GWL4-M5 GWS4-M5-S GWL6-M5	15 mm or less
25 dia.		11.5	9		
32 dia.		12.5	30.5	SC3W-6-4·6·8 GWS4-6 GWS6-6 GWS8-6 GWL4-6 GWL6-6	15 mm or less
40 dia.	Rc1/4	14	31		
50 dia.		14	35	SC3W-8-6·8·10 GWS4-8 GWS6-8	21 mm or less
63 dia.		16.5	35	GWS10-8 GWL4 to 12-8	



## 2.3 Fluid

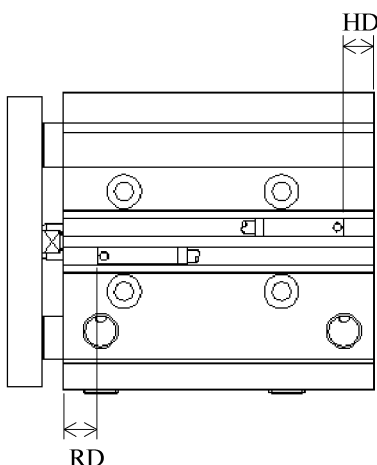
- 1) It is necessary to use dehumidified air that has been filtered from compressed air. Carefully select an adequate filter that has an adequate filtration rate (preferably  $5 \mu\text{m}$  or less), flow rate and its mounting location (as nearest to the directional control valve as possible).
- 2) Be sure to drain out the accumulation in the filter periodically.
- 3) Note that the intrusion of carbide for the compressor oil (such as carbon or tarry substance) into the circuit causes malfunction of the solenoid valve and the cylinder. Be sure to carry out thorough inspection and maintenance of the compressor.
- 4) This cylinder does not require lubrication. It is recommended, however, to use Turbine oil Grade 1, ISO VG32 as a lubricant, if and when lubrication is needed.





## 2.4 Switch installation

### 1) Location of mounting switches on a cylinder.



#### (1) At the stroke end

Refer the illustration above. Mount switches within the rod side dimension RD as well as the head side dimension HD for the purpose of having switches function at the points of the maximum sensitive position.

#### (2) Intermediate of stroke

Move the piston where it is anticipated to stop and fix it tentatively. Slide a switch carefully along the side of cylinder over the piston to find out the spot where switch turns on. This type spot should be located on both side of piston. The intermediate spot between those posits is of the maximum sensitive position and where the switch is supposed to be installed.

#### ● Relocation of switch

Slide switch body along cylinder tube after loosening mounting screws and tighten screws when located the maximum sensitive position.

#### ● Replacing switch

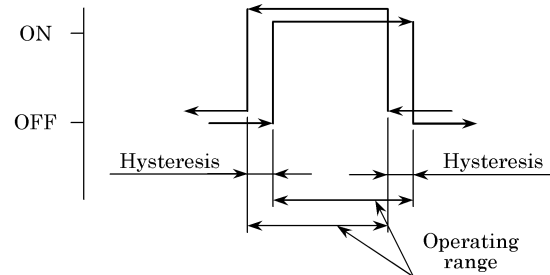
Take out switch out of groove after loosening mounting screws. Slide new replacing switch into groove and tighten screws upon placing the switch at the maximum sensitive position. (Apply tightening torque of 1 color indicator:0.1 to 0.2N·m, 2 color indicator:0.5 to 0.7N·m)

### 2) Operating range

- (1) The switch turns on first and turns off as the piston moves along its stroke.
- (2) The center of the range is the maximum sensitive position. Setting switch at this point eliminates majority of external disturbance and provides the most stabile actuation of switch.

### 3) Hysteresis

- (1) Precise operating range deviate slightly depending upon the direction of piston movement as shown right.
- (2) Switch is apt to be disturbed its accuracy by external effect when piston stops within this range. Carefully avoid designing stopping location of piston.



Item	Solid State (T2□,T3□, T2J□,T2Y□,T3Y□,T2YD)							
	Maximum sensitive position				Operating range		Hysteresis	
Tube bore (mm)	HD (mm)		RD (mm)					
	1 color	2 color	1 color	2 color	1 color	2 color	1 color	2 color
16 dia.	18	17	20.5	19.5	1.5~5	4~6	1.5 or less	1.5 or less
20 dia.	19.5	18.5	23.5	22.5	3~8	5~8.5		
25 dia.	17.5	16.5	25.5	24.5	3~9	5~9		
32 dia.	20	19	23.5	22.5		6~10		
40 dia.	22.5	21.5	27.5	26.5				
50 dia.	20.5	19.5	30	29				
63 dia.	24	23	31	30				

Item Tube bore (mm)	Reed (T0□, T5□)			
	Maximum sensitive position		Operating range	Hysteresis
	HD	RD		
16 dia.	18	20.5	4~9	3 or less
20 dia.	19.5	23.5	6~14	
25 dia.	17.5	25.5	5~14	
32 dia.	20	23.5	5~12	
40 dia.	22.5	27.5	6~14	
50 dia.	20.5	30	6~14	
63 dia.	24	31	7~15	

※Switches at ex-factory shipment are positioned at the maximum sensitive position (HD and RD).



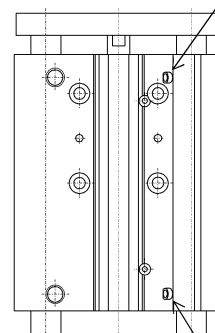
### 3. OPERATION

#### 3.1 Operating the Cylinder

- 1) See to it that the air supply pressure to the cylinder is as shown in the “Specification”. Operate the cylinder within this pressure range.
- 2) Though the cushion has been adjusted at no load when delivered, adjust the cushion needle when the change of cushion effect is required.  
Tightening the needle (clockwise) makes cushion more effective. Tighten the needle lock nut all the way after adjustment.

However, if kinetic energy such as load is heavy or speed is too fast, exceeding the values given in Table 1, consider of providing a shock absorber.

The needle to adjust the cushion of rod advancing end



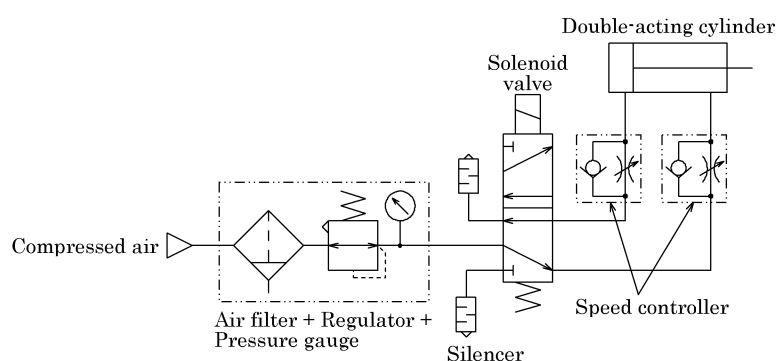
The needle to adjust the cushion of rod retracting end

Table1 Table of cushion characteristics

Tube bore (mm)	Air cushioned	
	Effective cushion length (mm)	Allowable energy adsorption (J)
16 dia.	13.4	0.3
20 dia.	8.1	0.7
25 dia.	8.1	1.0
32 dia.	8.6	2.5
40 dia.	8.6	3.7
50 dia.	13.4	3.8
63 dia.	13.5	5.5

- 3) Regulate the piston speed by installing speed controllers as per illustration in the Fundamental Circuit Diagram, below.

#### ● Fundamental Circuit Diagram



## 3.2 How to use the Switches

### 3.2.1 Common items

#### 1) Magnetic environment

Do not operate this product in a place where a strong magnetic field or large current (large magnet or spot welder, etc.) exists. If a cylinder with the switch is installed in parallel to this product or the magnetic substance moves near the cylinder, the mutual interference may occur and affect the detection accuracy.

#### 2) Protection of lead cord

Pay consideration to eliminate repeating bending stress or stretching of lead cord while laying the cord.

To the moving portion, use such cord of flexibility as for building a robot.

#### 3) Operating temperature

Do not operate the product at a high temperature (60°C).

Always avoid operation of the product in a hot place due to temperature characteristics of magnetic and electronics parts.

#### 4) Intermediate position detection

When activating the switch halfway of the stroke, the relay may not respond if the piston speed is too fast.

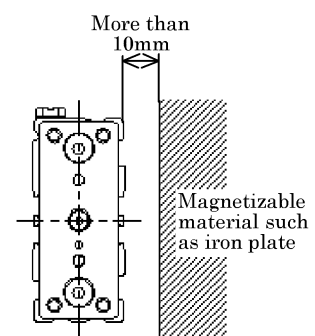
(Example) Operate cylinder with the speed of less than 500mm/s in case the relay actuation time is 20ms.

#### 5) Impact

Do not apply a large vibration or impact to the product when transporting the cylinder, or mounting or adjusting the switch.

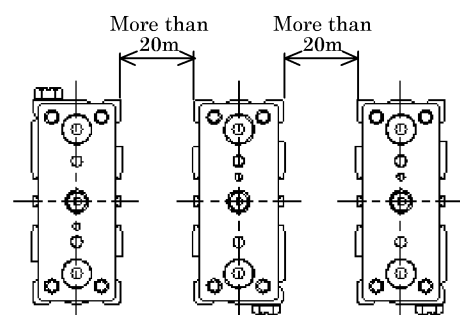
#### 6) Magnetizable material such as iron plate near by cylinder switch is apt to cause malfunction of cylinder switches. Keep it from cylinder surface at least 10mm away.

(This is applicable for all bore sizes of tube.)



#### 7) It usually causes malfunction cylinder switches when plural cylinders are laid adjoining. Keep a space between each other as illustrated to right.

(This is applicable for all bore sizes of tube.)



### 3.2.2 Operational Cautions, Solid state switch (T2, T3)

#### 1) Connection of lead cord

Comply with the color coding specified on the illustrations. Be sure to turn the power off before starting connecting work.

An erroneous wiring or short circuiting of load causes damage to not only switches, but also load side circuit. Wiring work without shutting electricity off may cause damage to the load side circuit

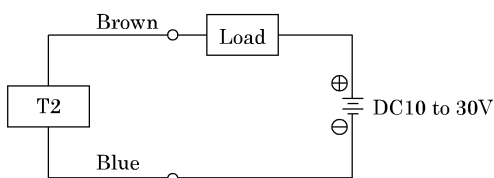


Fig.1 Fundamental circuit Example

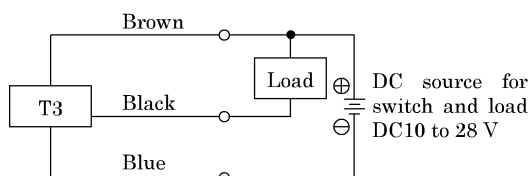


Fig.2 Fundamental circuit Example (1)  
(In case the same source of power is used.)

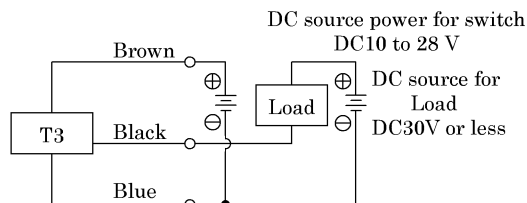


Fig.3 Fundamental circuit Example (2)  
(In case individual sources of power are used.)

#### 2) Protection of output circuit

Install some protective circuit as illustrated in Fig. 4 when inducing type load (Relay or solenoid valve) are to be used because those types apt to generate surge current switch off.

Install some protective circuit as illustrated in Fig. 5 when capacitor type load (Capacitor type) are to be used, because these types apt to generate a dash current when turning the switch ON.

Install some protective circuit as illustrated in Fig. 6 or 7 (in case of model T2) and Fig 8 (in case of model T3).

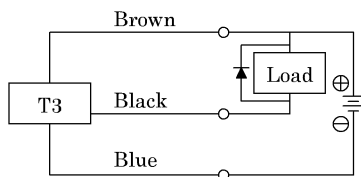


Fig.4 An example of using inducing load together with surge absorptive element (diode). (Hitachi Mfg. made diode V06C or equivalent is recommended.)

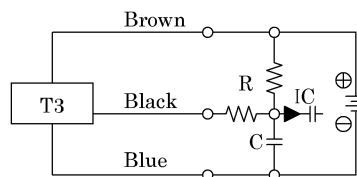


Fig.5 An example of using capacitor type load together with current regulating resistor R. Comply with the following formula to figure out required R(Ω).

$$\frac{V}{0.05} = R(\Omega)$$

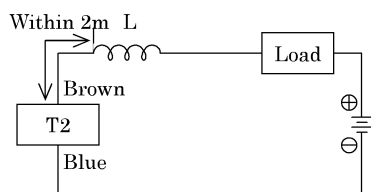


Fig.6 · Choke coil  
 $L$  = a couple hundred  $\mu$  H to a couple mH  
 surpassing high frequency characteristic  
 · Install it near by a switch (within 2m).

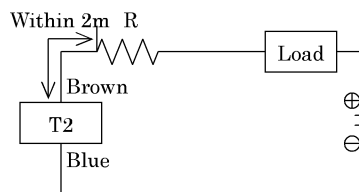


Fig.7 · Dash current restriction resistor.  
 $R$  = As much large resistor as the load circuit can afford.  
 · Install it near by a switch (within 2m).

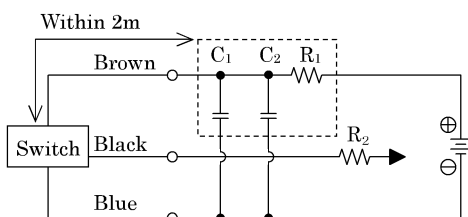


Fig8 · Electric power noise absorptive circuit.  
 $C_1$  = 20 to 50  $\mu$  F electrolytic capacitor  
 (withstanding 50V or more)  
 $C_2$  = 0.01 to 0.1  $\mu$  F ceramic capacitor  
 $R_1$  = 20 to 30  $\Omega$   
 · Dash current restriction resistor.  
 $R_2$  = As much large resistor as the load circuit can afford.  
 · Install it nearby the switch (Within 2m)

### 3) Connection to a programmable controller (Sequencer).

Type of connection varies depending upon the model of the programmable controller. Refer to the following Fig. 9 to 13 respectively.

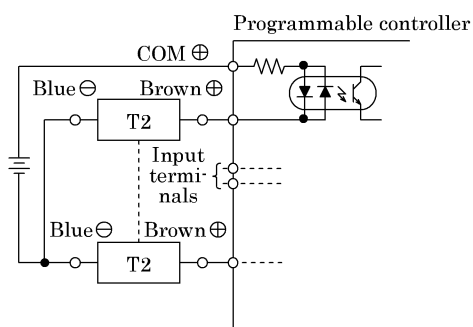


Fig.9 An example of T2 connection to source input type  
 (an external power source)

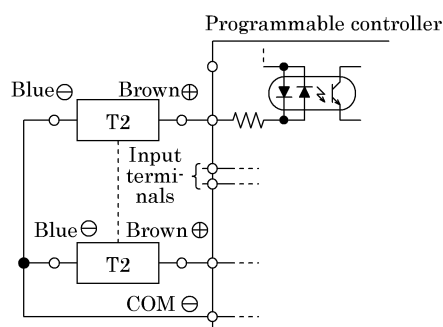


Fig.10 An example of T2 connection to source input type  
 (an internal power source)

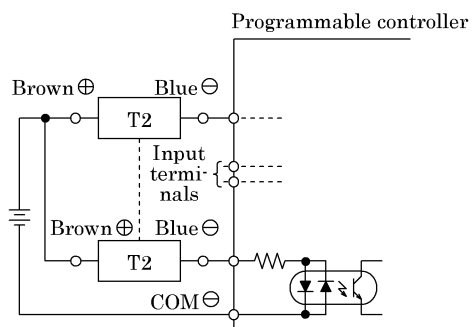


Fig.11 An example of T2 connection to sink input type

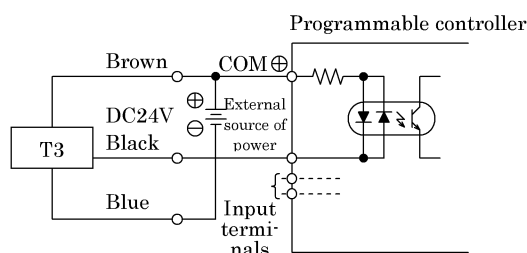


Fig.12 An example of T3 connection to source input type  
 (an external power source)

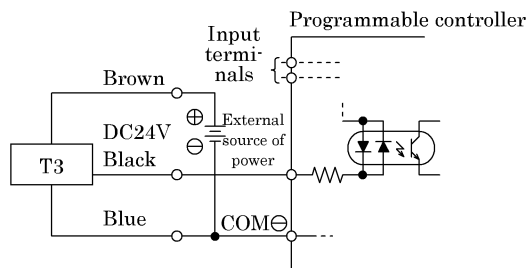


Fig.13 An example of T3 connection to source input type  
(an internal power source)

#### 4) Series connection

The total voltage will decrease when the T2 switches connections have a leak. Therefore, confirm the input specifications for the programmable controllers, which are the connecting load. However, dimming or total failure of the lamp may exist.

T3 switches hardly ever leak. When less than  $10 \mu A$ , then leakage may occur. Usually dimming and failure of the lamp do not occur.

### 3.2.3 Reed switch(T0, T5)

#### 1) Lead wire connections

Do not connect the lead wires of the switch to the power supply directly. Always connect the loads in series. For T0 switch, carefully check following items ①, ②.

- ① When using the switch for DC power supply, connect the brown and blue lines to the positive and negative sides, respectively. If these lines are connected reversely, the switch is activated, but the lamp is not lit.
- ② When the switch is connected to an AC relay or a programmable controller input, the lamp on the switch is not lit if the half-wave rectification is performed in the connected circuit. If this occurs, reverse the polarities of the switch lead wire connection. The lamp may then be lit.

#### 2) Contact protective measures

When an inductive load, such as relay is used or the wire length exceeds that stated in Table 2, always install a contact protective circuit.

Table 2

Electric power	Length of wire
DC	100m
AC	10m

#### (1) Protective circuit when connecting an inductive type load.

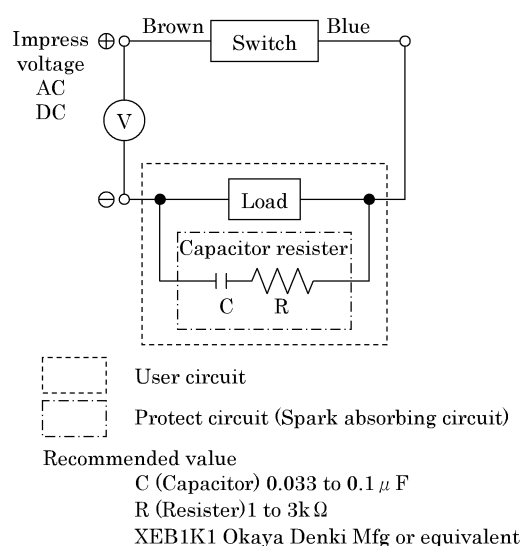


Fig.1 When capacitor resistor is used.

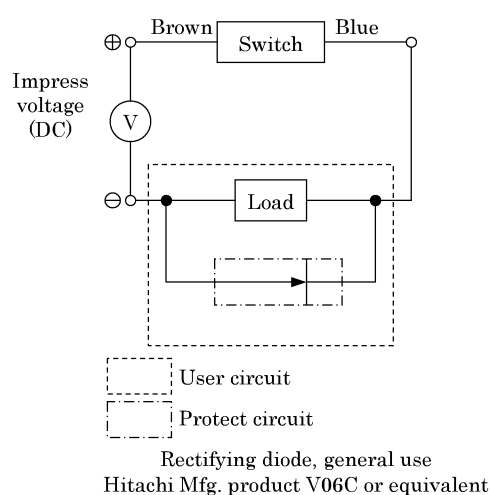
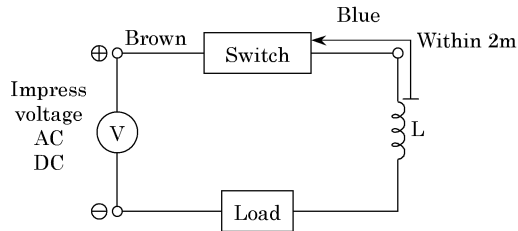


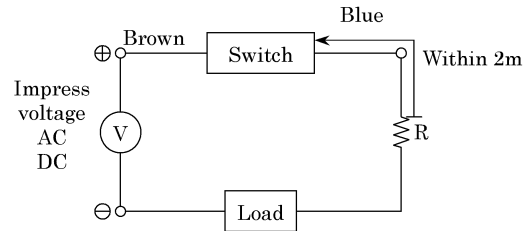
Fig.2 When diode is used.

(2) Protective circuit when the wire length exceeds that stated Table 2.



- Choke coil  
L=a couple hundred  $\mu$  H to a couple mH  
surpassing high frequency characteristic
- Install it near by a switch (within 2m).

Fig.3



- Dash current restriction resister  
R=As much large resister as the load  
circuit can afford.
- Install it near by a switch (within 2m).

Fig.4

3) Contact capacity

Do not use a load exceeding the maximum contact capacity of the switch. Additionally, if the current is lower than the rated current value, the lamp may not be lit.

4) Relay

Always use the relays listed below.

Omron Corporatio  
Fuji Electric Co.,  
Panasonic, Lt

5) Serial connection

Total voltage loss, when connected T0 switches in series, equals to the sum of respective voltage loss of each switch.

The total voltage loss becomes equivalent to one T0 (approx. 2.4V) when connecting the combination of one T0 for actuation confirming and rest of T5 switches. Lamp is lit only when all switches turn on.

6) Parallel connection

There is no restriction in parallel connection number of switches of these types. Multi number connections of model T0, sometimes, cause a dimmed lamp or complete lamp failure.



## 4. MAINTENANCE

### 4.1 Periodical Inspection

- 1) In order to upkeep the cylinder in optimum condition, carry out periodic inspection once or twice a year.
- 2) Inspection items
  - (1) Check the bolts and nuts fitting the piston rod end fittings and supporting fittings for slackening.
  - (2) Check to see that the cylinder operates smoothly.
  - (3) Check any change of the piston speed and cycle time.
  - (4) Check for internal and/or external leakage.
  - (5) Check the piston rod for flaw (scratch) and deformation.
  - (6) Check the stroke for abnormality.

additional tightening if bolts, nuts, etc. are slackened.



## 4.2 Trouble shooting

### 1) Cylinder

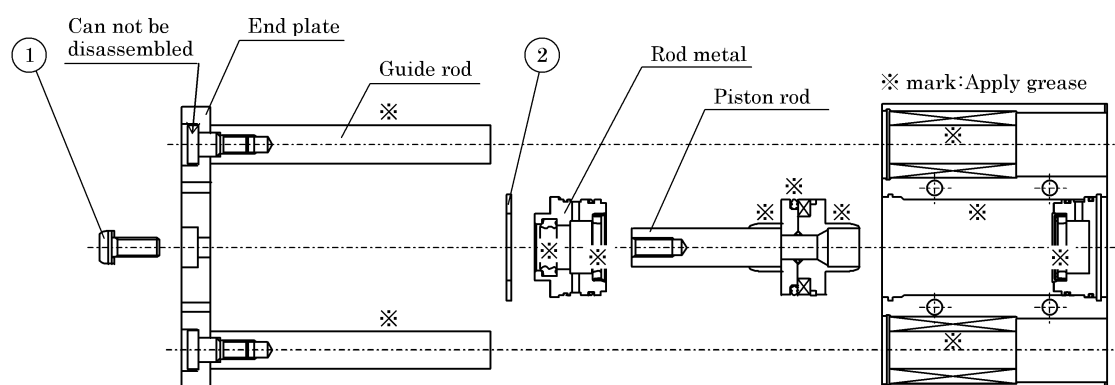
Trouble	Causes	Remedies
Does not operate.	No pressure or inadequate pressure.	Provide an adequate pressure source.
	Signal is not transmitted to direction control valve.	Correct the control circuit.
	Improper or misalignment of installation.	Correct the installation state and/or change the supporting system.
	Broken piston packing	Replace the piston packing.
Does not function smoothly.	Speed is below the low speed limit	Limit the load variation.
	Improper or misalignment of installation.	Correct the installation state and/or change the supporting system.
	Exertion of transverse (lateral) load.	Install a guide. Revise the installation state and/or change the supporting system.
	Excessive load.	Increase the pressure itself and/or the inner diameter of the tube.
		Change the installation direction of the speed control valve.
Breakage and/or deformation	Impact force due to high speed operation	Turn the speed down. Reduce the load and/or install a mechanism with more secured cushion effect (e.g. external cushion mechanism).
	Exertion of transverse load.	Install a guide. Reverse the installation state and/or change the supporting system.

### 2) Switch

Troubles	Causes	Remedies
Lamp is not lit.	Deposited contact point	Replace the switch.
	Excessive load than rated capacity	Replace the relay with a recommended one or replace the switch.
	Damaged lamp	Replace the switch.
	Inadequate incoming signal	Review the external signal circuit and remove the causes.
Switch does not function right.	Broken circuit	Replace the switch.
	Inadequate incoming signal	Review the external signal circuit and remove the causes.
	Improper voltage	Correct voltage to specified.
	Incorrect location of switch	Correct its location.
	Aberrant position of switch	Set it back to original position and tighten the mounting device.
	Incorrect direction of switch mounting	Correct the direction of the switch mounting.
	Relay is unable to respond properly	Turn the speed down. Replace the relay with a recommended one.
	Excessive load than rated capacity	Replace the relay with a recommended one or replace the switch.
Switch does not return.	Piston is not moving	Make the piston move.
	Deposited contact point	Replace the switch
	Excessive load (relay) than rated capacity	Replace the relay with a recommended one or replace the switch.
	The ambient temperature is out of the specification range	Adjust the ambient temperature within the range of -10 to 60°C
	Existence of a foreign magnetic field	Shield the magnetic field.
	Inadequate incoming signal	Review the external signal circuit and remove the causes.

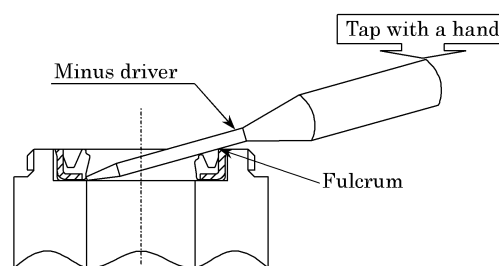
### 4.3 Disassembling

- 1) Cylinder of this type is able to be disassembled. Disassemble it, referring to the internal structural drawing, should there be any disorder such as air leakage then replace the expendable parts refer to Exp. Parts list posted below.
- 2) Remove bolt, ①. Take out End plate together with Guide rod. Remove C-shape snap ring ②. Pull out piston rod together with rod metal. Follow reverse steps of disassembling during the process of assembling. Be sure at this time to apply a film of grease over packing and guide (※ part). Apply adhesive to bolt ①. Verify that cylinder is in the state of pulling when tightening bolt ① to the piston rod.



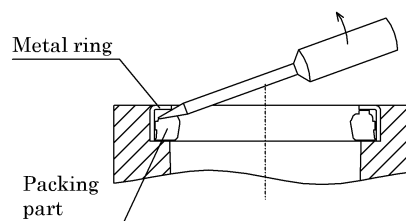
- 3) Replace the cushion packing  
〈20 dia. to 32dia., 50 dia, 63 dia.〉

To remove cushion packing, fix the cover, and then pry it out with a minus driver by tapping the handle of screw driver with a hand upon inserting the tip under the loin of packing while making the corner edge of cover a fulcrum.



〈16 dia., 40dia.〉

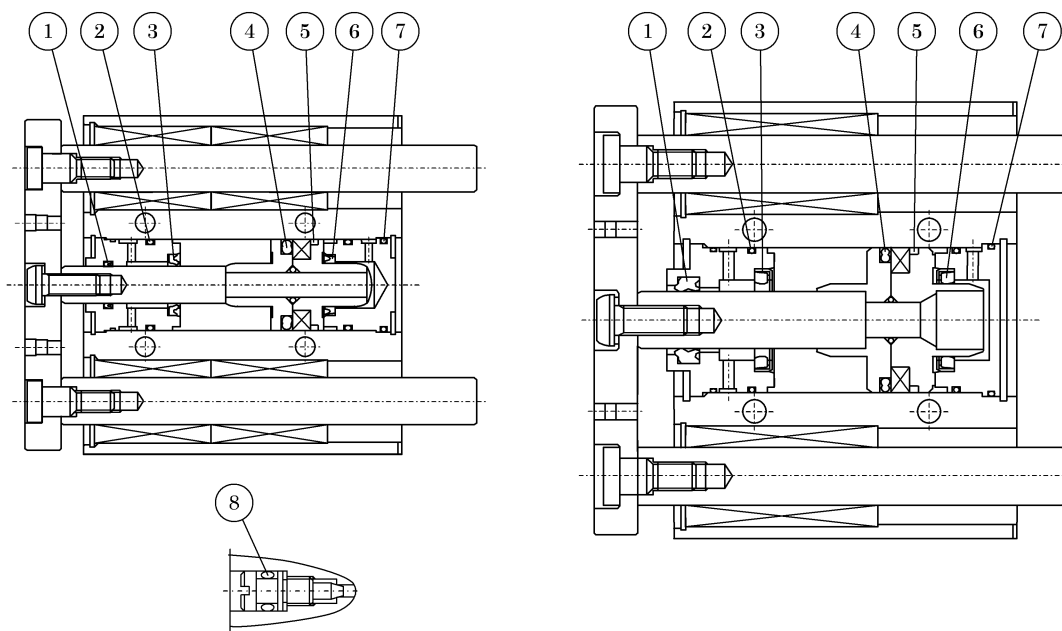
Remove only the packing part using sharp pointed tool such as minus screw driver or ice pick. (For 40 dia., the metal ring is left as it is without removing.)



### 3) Internal structure drawings and Expendable parts list

● STG 12 dia. to 25 dia.

● STG 32 dia. to 63 dia.



Expendable Parts List (Designate the Kit No. when ordering)

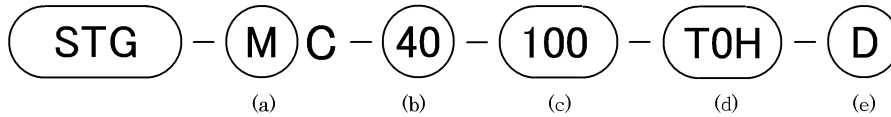
Tube bore (mm)	Part No. Part name Kit No.	①	②	③	④
		Rod packing	O ring	Cushion packing (R)	Piston packing
16 dia.	STG-C-16K	MYR-6	14.0×0.81	F4-670393	PPD-16
20 dia.	STG-C-20K	MYR-8	18.5×0.8	P12253-0095	PPD-20
25 dia.	STG-C-25K	MYR-10	23.5×0.8	P12253-012	PPD-25
32 dia.	STG-C-32K	MYR-12	30.2×1.0	P12253-014	PPD-32
40 dia.	STG-C-40K	F4-428463	36.8×1.2	F4-436638	PPD-40
50 dia.	STG-C-50K	F4-428464	44.0×1.3	P12217-024	PPD-50
63 dia.	STG-C-63K	F4-428464	AS568-35	P12217-024	PPD-63

Expendable Parts List (Designate the Kit No. when ordering)

Tube bore (mm)	Part No. Part name Kit No.	⑤	⑥	⑦	⑧
		Wearing	Cushion packing (H)	O ring	O ring
16 dia.	STG-C-16K	F4-162726	F4-670393	AS568-018	2.0×0.1.0
20 dia.	STG-C-20K	F4-125610	P12253-0095	AS568-020	2.0×0.1.0
25 dia.	STG-C-25K	F4-161716	P12253-012	AS568-025	2.0×0.1.0
32 dia.	STG-C-32K	F4-161733	P12253-014	AS568-029	2.0×0.1.0
40 dia.	STG-C-40K	F4-650239	F4-436638	AS568-032	2.0×0.1.0
50 dia.	STG-C-50K	F4-650240	P12217-024	AS568-036	2.0×0.1.0
63 dia.	STG-C-63K	F4-650241	P12217-024	AS568-035	2.0×0.1.0

## 5. HOW TO ORDER

### 5.1 Product Number Coding



(a) Type of bearing		(b) Tube bore (mm)			
M	Slide bearing	16	16 dia.	40	40 dia.
B	Ball bearing	20	20 dia.	50	50 dia.
		25	25 dia.	63	63 dia.
		32	32 dia.		

● : Standard — : Not available

(c) Standard stroke (mm)		10	20	25	30	40	50	75	100	125	150	175	200	250	300	350	400
STG	16 dia.	●	●	—	●	●	●	●	●	●	●	●	●	●	—	—	—
	20 dia.	—	●	—	●	●	●	●	●	●	●	●	●	●	●	●	●
	25 dia.	—	●	—	●	●	●	●	●	●	●	●	●	●	●	●	●
	32 dia.	—	—	●	—	—	●	●	●	●	●	●	●	●	●	●	●
	40 dia.	—	—	●	—	—	●	●	●	●	●	●	●	●	●	●	●
	50 dia.	—	—	●	—	—	●	●	●	●	●	●	●	●	●	●	●
	63 dia.	—	—	●	—	—	●	●	●	●	●	●	●	●	●	●	●

(d) Switch model No.					(e) Qty. of switch	
Lead wire straight type	Lead wire L-shaped type	Contact	Indicator	Lead wire	R	One on rod side
					H	One on head side
T0H※	T0V※	Reed	1 color indicator	2 wire	D	Two
T5H※	T5V※		Without indicator light		T	Three
T2H※	T2V※	Solid state	1 color indicator	3 wire		
T3H※	T3V※					
T2YH※	T2YV※		2 color indicator	2 wire		
T3YH※	T3YV※			3 wire		
T2JH※	T2JV※		Off delay type	2 wire		
T2YD※	—		Strong magnetic field proof solid state			
T2YDT※	—					

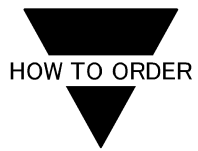
※mark shows lead wire length.

※ Lead wire length	
Blank	1m (Standard)
3	3m (Optional)
5	5m (Optional)

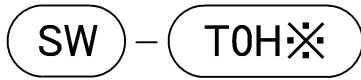
#### ● Custom stroke length

Available per 5mm increment.

Overall length dimensions are as same as the following standard stroke length increment.



## 5.2 How to order switch



(d)  
└─ Switch model No.  
    (Previous page ㉑)

## 6. SPECIFICATION

### 6.1 Cylinder Specifications

Model code	STG-M/BC							
Item								
Tube bore	mm	16 dia.	20 dia.	25 dia.	32 dia.	40 dia.	50 dia.	63 dia.
Actuation	Double-acting type·Air cushioned							
Working fluid	Compressed air							
Max. working pressure	MPa	1.0						
Min. working pressure	MPa	0.15			0.1			
Proof pressure	MPa	1.6						
Ambient temperature	℃	-10 to 60 (No freezing)						
Port size		M5	Rc1/8				Rc1/4	
Stroke tolerance	mm	+2.0 0						
Working piston speed	mm/s	50 to 500						50 to 300
Cushion	With air cushion							
Lubrication	Not required (Use Grade 1 ISO VG 32 Turbine oil, if lubrication is preferred)							
Allowable energy absorption	J	0.3	0.7	1.0	2.5	3.7	3.8	5.5

### 6.2 Switch Specifications

#### 1) Type of switches and applications

Model code			Application (Purpose)
Item			
Solid state	2 wire	T2H	DC Programmable controller, exclusive
		T2V	
	3 wire	T3H	DC Programmable controller, Relay
		T3V	
Reed	2 wire	T0H	AC/DC Programmable controller, Relay
		T0V	
		T5H	AC/DC Programmable controller, Relay or IC circuit (not including Lamp), Series connection
		T5V	
2 color indicator Solid state	2 wire	T2YH	DC Programmable controller, exclusive
		T2YV	
	3 wire	T3YH	DC Programmable controller, Relay
		T3YV	
Off delay type	2 wire	T3YMV	
		T2JH	DC Programmable controller, exclusive
T2JV			
Strong magnetic field proof Solid state	2 wire	T2YD	DC Programmable controller, exclusive
		T2YDT	

Note1. T※H expresses the axial lead wire. T※V expresses the radial lead wire.

## 2) Switch specification

Type & Model	Reed 2 wire			
Item	T0H/V		T5H/V	
Applications	Programmable controller, relay		Programmable controller, relay, IC circuit (without indicator light), series connection	
Power voltage	—			
Load Voltage	DC12/24V	AC110V	DC5/12/24V	AC110V
Load Current	5 to 50mA	7 to 20mA	50mA or less	20mA or less
Current consumption	—			
Internal voltage drop	3V or less		0V	
Indicator light	LED (ON lighting)		Without indicator light	
Leakage current	0mA			
Lead wire length (Note1)	Standard 1m (Oil resistant vinyl cabtire cord 2 conductor 0.2mm <sup>2</sup> )			
Shock resistance	294m/s <sup>2</sup>			
Insulation resistance	20MΩ over at DC500V megger			
Withstand voltage	No failure impressed at AC1000V for one minute			
Ambient temperature	-10 to 60℃			
Protection structure	IEC Standards IP67, JIS C0920 (water tight type), oil resistance			

Type & Model	Solid state 2 wire		
Item	T2H/V	T2JH/V	T2YH/V
Applications	Programmable controller		
Power voltage	—		
Load Voltage	DC10 to 30V		
Load Current	5 to 20mA (Note 2)		
Current consumption	—		
Internal voltage drop	4V or less		
Indicator light	LED (ON lighting)		Red/green LED (ON lighting)
Leakage current	1 mA or less		
Lead wire length (Note1)	Standard 1m (Oil resistant vinyl cabtire cord 2 conductor 0.2mm <sup>2</sup> )	Standard 1m (Oil resistant vinyl cabtire cord 2 conductor 0.3mm <sup>2</sup> )	
Shock resistance	980m/s <sup>2</sup>		
Insulation resistance	20MΩ over at DC500V megger	100MΩ over at DC500V megger	
Withstand voltage	No failure impressed at AC1000V for one minute		
Ambient temperature	-10 to 60℃		
Protection structure	IEC Standards IP67, JIS C0920 (water tight type), oil resistance		

Type & Model	Solid state 3 wire	
Item	T3H/V	T3YH/V
Applications	Programmable controller, relay	
Output method	NPN output	
Power voltage	DC10 to 28V	
Load Voltage	DC30V or less	
Load Current	100 mA or less	50mA or less
Current consumption	10mA or less at DC24V	
Internal voltage drop	0.5V or less	
Indicator light	LED (ON lighting)	Red / green LED (ON lighting)
Leakage current	10 $\mu$ A or less	
Lead wire length (Note1)	Standard 1m (Oil resistant vinyl cabtire cord 3 conductor 0.2mm <sup>2</sup> )	
Shock resistance	980m/s <sup>2</sup>	
Insulation resistance	20M $\Omega$ over at DC500V megger	100M $\Omega$ over at DC500V megger
Withstand voltage	No failure impressed at AC1000V for one minute	
Ambient temperature	- 10 to 60°C	
Protection structure	IEC Standards IP67, JIS C0920 (water tight type), oil resistance	

Type & Model	Solid state 2 wire	
Item	T2YD	T2YDT
Applications	Programmable controller	
Load voltage	DC24V $\pm$ 10%	
Load current	5 to 20mA	
Internal voltage drop	6V or less	
Indicator light	Red / green LED (ON lighting)	
Leakage current	1.0mA or less	
Output delay time (ON delay, OFF delay)	30 to 60ms	
Lead wire length (Note1)	Standard 1m (Oil resistant vinyl cabtire cord 2 conductor 0.5mm <sup>2</sup> )	Standard 1m (Flame resistant vinyl cabtire cord 2 conductor 0.5mm <sup>2</sup> )
Shock resistance	980m/s <sup>2</sup>	
Insulation resistance	100M $\Omega$ over at DC500V megger	
Withstand voltage	No failure impressed at AC1000V for one minute	
Ambient temperature	- 10 to 60°C	
Protection structure	IEC Standards IP67, JIS C0920 (water tight type), oil resistance	

Note1 : 3m or 5m long lead wire is optionally available.

Note2 : Maximum value, 20mA is at 25°C of ambient temperature. Load current decreases less than 20mA when the ambient temperature exceeds 25°C. (For example: it may be 5 to 10mA at 60)