

Are your workpieces being damaged?

The shockless type grips the workpiece gently even at high speeds.



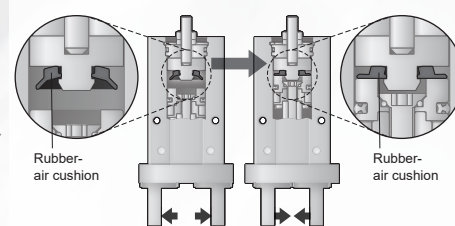
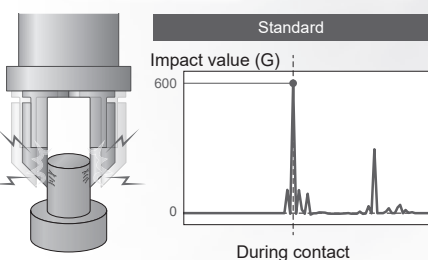
Suppresses impact to approximately 1/30

Shock absorbing mechanism integrated

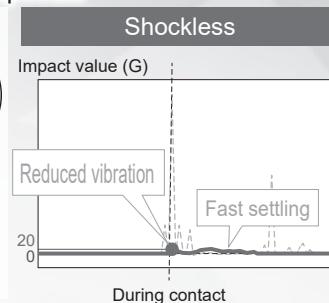
Unique shock absorbing mechanism (option)

Workpiece is damaged due to impact from the slide hand.

Grips the workpiece gently even at high speeds.



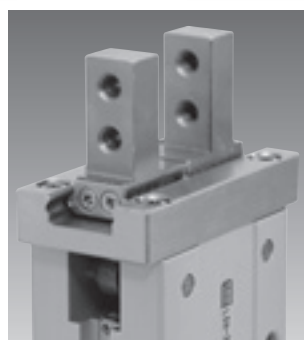
* Can be adjusted according to stroke length.



High rigidity/high precision

Linear guide used

High rigidity and high precision are achieved with a structure integrating the guide rail and finger.



Increased flexibility in design

Can be mounted from three directions

Axial (upward) mounting	Horizontal mounting	Vertical mounting
With reference spigot	Body thickness tolerance ± 0.05 mm	Excellent centering precision