

LCM
LCR
LCG
LCW
LCX
STM
STG
STS/STL
STR2
UCA2
ULK*
JSK/M2
JSG
JSC3/JSC4
USSD
UFCD
USC
UB
JSB3
LMB
LML
HCM
HCA
LBC
CAC4
UCAC2
CAC-N
UCAC-N
RCS2
RCC2
PCC
SHC
MCP
GLC
MFC
BBS
RRC
GRC
RV3*
NHS
HRL
LN
Hand
Chuk
MechHnd/Chuk
ShkAbs
FJ
FK
SpdContr
Ending

Basic model added

Specs most used by customers are provided as standard!
Selecting the model is easier



LCW Series

Three points for ease of selection

1. Combination of 3 bore sizes

ø12 ø16 ø20

A single piston is used.

(LCR ø8, ø12, ø16 equiv.)

2. Stroke length aggregated to 3 pitches

30 mm 50 mm 75 mm

3. Stroke adjustment function available as standard

3 types of stoppers are available.



■ Rubber cushion stopper (Standard)



■ Metal stopper with rubber cushion (M)



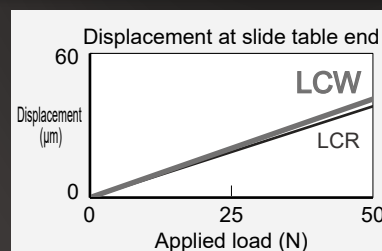
■ Shock absorber stopper (A)

Points regarding reliability

High rigidity

In the spirit of LCR

Enables high rigidity and light weight.



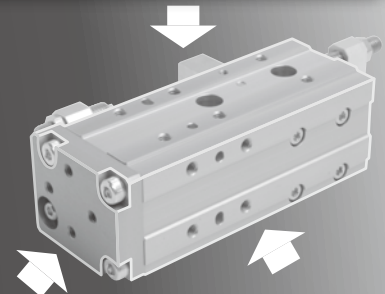
to linear slide cylinders

LCM
LCR
LCG
LCW
LCX
STM
STG
STS/STL
STR2
UCA2
ULK*
JSK/M2
JSG
JSC3/JSC4
USSD
UFCD
USC
UB
JSB3
LMB
LML
HCM
HCA
LBC
CAC4
UCAC2
CAC-N
UCAC-N
RCS2
RCC2
PCC
SHC
MCP
GLC
MFC
BBS
RRC
GRC
RV3*
NHS
HRL
LN
Hand
Chuk
MechHnd/Chuk
ShkAbs
FJ
FK
SpdContr
Ending

Three points for ease of use

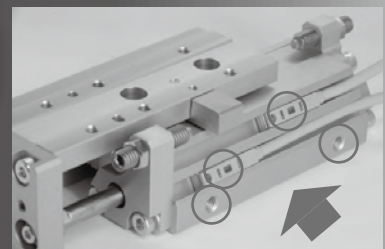
1. 3-surface mounting

First in the industry!! Uses an innovative L-shaped table.
Flexibility in design is greatly improved.



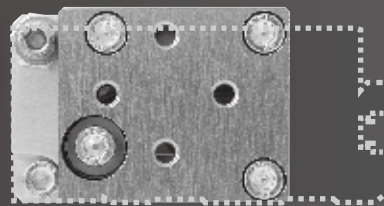
2. Piping and wiring direction on the same surface

Neat wiring and piping.
Workability and visibility are improved.



3. Compact, space saving

Reduction of width direction by 27% and area ratio by 20%.
Stopper position has been revised.



Area ratio
reduced by
20%!

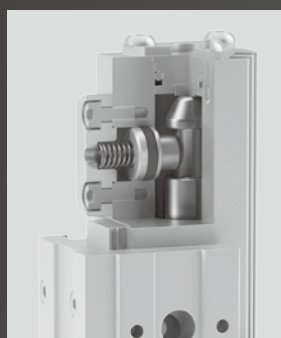
(compared to LCR)

Points regarding safety

Position locking available

First in the industry!!
In addition to the head side, the rod side * also supports position locking.

* Made-to-order product



Position locking mechanism



Head side



Rod side*