

Axial space saving equipped with high precision guide.

SCP*3
CMK2
CMA2
SCM
SCG
SCA2
SCS2
CKV2
CAV2/
COVPIN2
SSD2
SSG
SSD
CAT
MDC2
MVC
SMG
MSD/
MSDG
FC*
STK
SRL3
SRG3
SRM3
SRT3
MRL2
MRG2
SM-25
ShkAbs
FJ
FK
Spd
Contr
Ending

Axial space saving

Axial direction length is reduced.
Mounting space can be reduced.

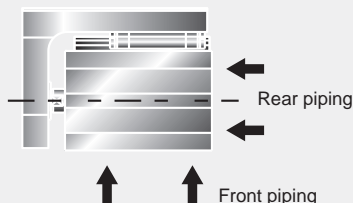
Design with long service life (approx. 4 times greater than the conventional)

Oil-impregnated copper alloy bearing is adopted for rod bearing section to increase abrasion resistance.

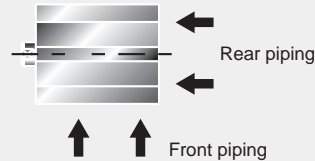
Piping direction can be selected

Piping can be selected from 2 directions: body side surface and bottom surface (rear common port).

● MSDG



● MSD



Equipped with F Series with miniature switch

With a compact size of $\phi 6/\phi 8$, with switch is realized.

Direct mounting from 3 faces

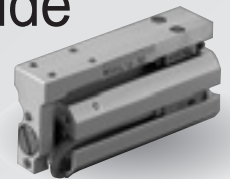
As a square body is adopted, it can be directly mounted from any direction. Mounting to the body top surface and bottom surface can be done with through bolt and tapped hole.

In addition, body side surface mounting is now also possible through the adoption of a rear common port.

High precision/high rigidity achieved by saving space

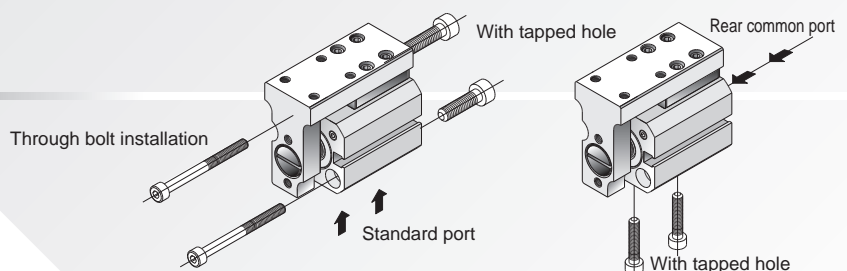
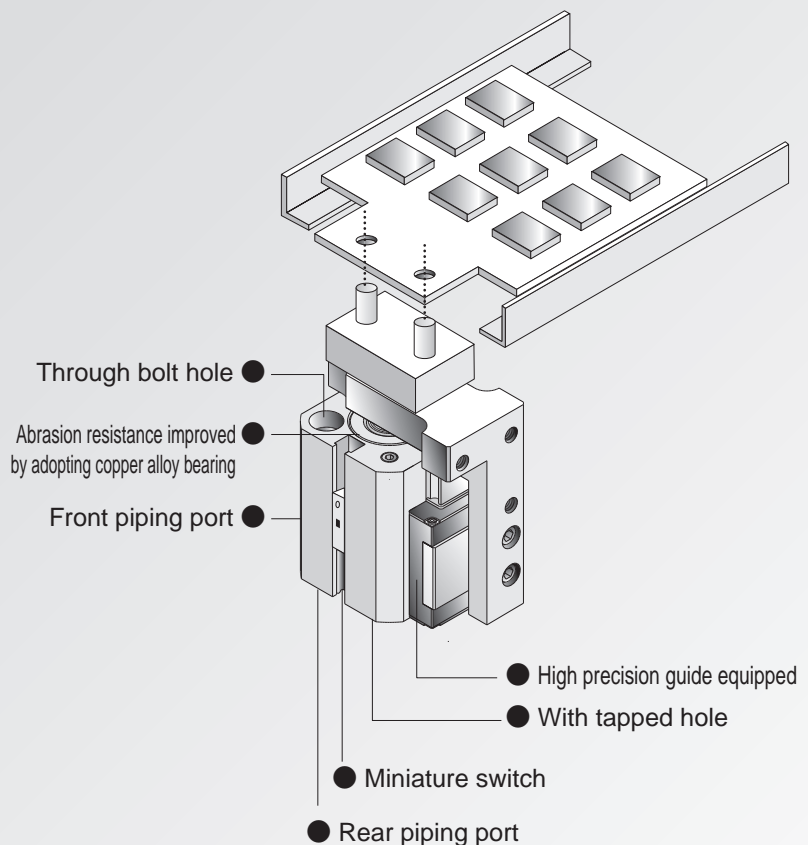
With high precision guide

MSDG Series



Axial space saving with guide

Short axial length MSD Series equipped with high precision guide.
Caters to the high-precision/high-rigidity needs of confined spaces.



ø6, ø8 added to conventional compact cylinder

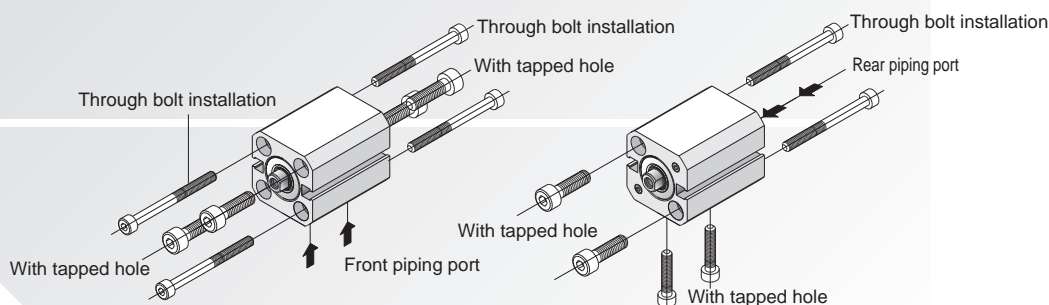
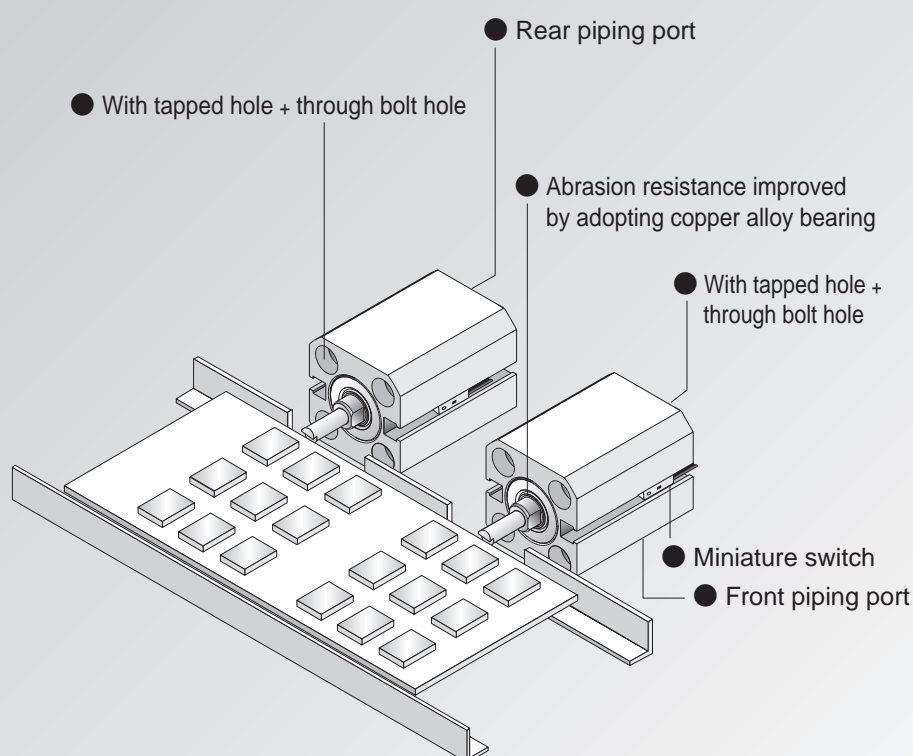
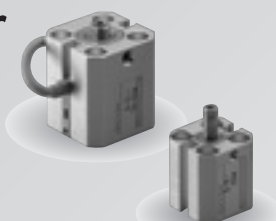
Small compact cylinder MSD series, further equipped with a high precision guide

New MSG Series of compact cylinders with small guides

ø6, ø8 added to
the compact cylinder

MSD Series

● Axial space saving achieved



SCP*3
CMK2
CMA2
SCM
SCG
SCA2
SCS2
CKV2
CAV2/ COVP/N2
SSD2
SSG
SSD
CAT
MDC2
MVC
SMG
MSD/ MSDG
FC*
STK
SRL3
SRG3
SRM3
SRT3
MRL2
MRG2
SM-25
ShkAbs
FJ
FK
Spd Contr
Ending