

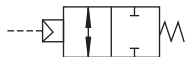
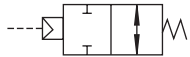
General Purpose Valves
Catalog No. CB-03-1SAAir operated 2-port ball valve
(Compact rotary valves)

CHB-FP2/CHB-R*-FP2 CHBF-FP2/CHBF-R*-FP2 Series

● Port size: Rc3/8 to Rc2



JIS symbol

● CHB/CHBF
(double acting)● CHB-R1/CHBF-R1
(Single acting-NC)● CHB-R2/CHBF-R2
(Single acting-NO)

Common specifications

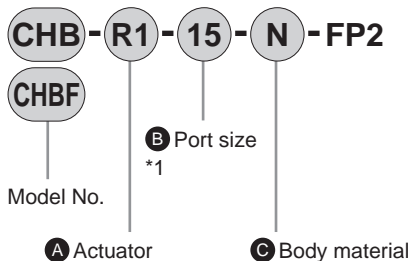
Item	Double acting	Single acting
	CHB(Standard bore) CHBF(Full bore)	CHB-R*(Standard bore) CHBF-R* (Full bore)
Actuation	Air operated: Double acting	
Working fluid	Water/air/oil(500 mm ² /s or less)	
Working pressure MPa	0 to 1.0	
Proof pressure(water pressure) MPa	2.0	
Fluid temperature °C	0 to 80(no freezing)	
Ambient temperature°C	-10 to 60(no freezing)	
Working environment	Indoors	
Mounting orientation	Unrestricted	
Frequency cycles/min.	1 or less	
Rotary actuator	Pilot fluid	
	Compressed air	
	Lubrication	
	Not required	
	Proof pressure(water pressure) MPa	
	1.5	
Working pressure	MPa	
	0.35 to 0.7	0.4 to 0.7
	Fluid temperature°C	
	5 to 60	
Port size		Rc1/8

Individual specifications

Item Model No.	Port size	Orifice size(mm)	Cv	Weight(kg)	
				Double acting	Single acting
Standard bore	CHB-(R*)-10	Rc3/8	10	1.0	1.1
	CHB-(R*)-15	Rc1/2	10	1.0	1.1
	CHB-(R*)-20	Rc3/4	15	1.2	1.3
	CHB-(R*)-25	Rc1	20	1.3	2.2
	CHB-(R*)-32	Rc1 1/4	25	2.1	2.5
	CHB-(R*)-40	Rc1 1/2	32	2.6	4.7
	CHB-(R*)-50	Rc2	40	3.3	5.5
Full bore	CHBF-(R*)-15	Rc1/2	15	2.3	1.2
	CHBF-(R*)-20	Rc3/4	20	5.1	2.1
	CHBF-(R*)-25	Rc1	25	6.6	2.4
	CHBF-(R*)-32	Rc1 1/4	32	11.4	4.7
	CHBF-(R*)-40	Rc1 1/2	40	17.6	5.4

1:CHB-(R)-10 is a full bore type.

How to order



[Example of model No.]

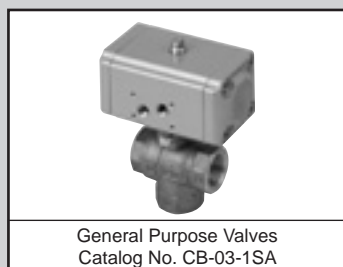
CHB-R1-15-N-FP2

Model No.: CHB (standard bore)

- A Actuator : Single acting NC (Normally Closed)
- B Port size : Rc1/2
- C Body material : Stainless steel

		Model No.	
Code	Description	CHB (Standard bore)	CHBF (Full bore)
A Actuator			
Blank	Double acting	●	●
R1	Single acting NC (Normally Closed)	●	●
R2	Single acting NO (Normally Open)	●	●
B Port size			
10	Rc3/8	●	●
15	Rc1/2	●	●
20	Rc3/4	●	●
25	Rc1	●	●
32	Rc1 1/4	●	●
40	Rc1 1/2	●	●
50	Rc2	●	●
C Body material			
N	Stainless steel Oil-prohibited specifications	●	●

For dimensions, refer to the CHB/CHBF Series in "General Purpose Valves (CB-03-1SA)".



Air operated 3-port ball valve
(Compact rotary valves)

Material compatible with the Food Sanitation Act

CHG-FP2/CHG-R*-FP2 Series

● Port size: Rc1/2 to Rc2

RoHS

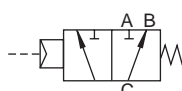
CAD

JIS symbol

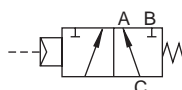
● CHG(Double acting)



● CHG-R1(Single acting - normally B-C path)



● CHG-R2(Single acting - normally A-C path)



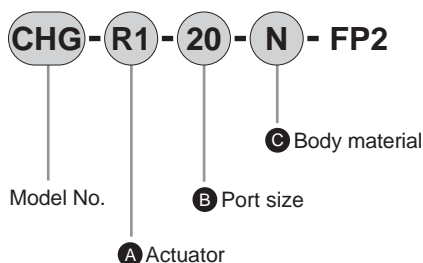
Common specifications

Item	CHG(Double acting)	CHG-R*(SingleActuation)
Actuation	Air operated: Double acting	Air operated: Single acting
Working fluid	Water/air/oil (500 mm ² /s or less)	
Working pressure MPa	0 to 1.0	
Proof pressure(water pressure) MPa	2.0	
Fluid temperature °C	0 to 80 (no freezing)	
Ambient temperature °C	-10 to 60 (no freezing)	
Working environment	Indoors	
Mounting orientation	Unrestricted	
Frequency cycles/min.	1 or less	
Pressurization direction	Port C pressurization only	
Flow path shape	Multi-fluid type (90°Rotation switching method)	
Rotary actuator	Pilot fluid	Compressed air
	Lubrication	Not required
	Proof pressure(water pressure) MPa	1.5
	Working pressure MPa	0.35 to 0.7
	Fluid temperature °C	5 to 60
	Port size	Rc1/8

Individual specifications

Item Model No.	Port size	Orifice size(mm)	Cv	Weight(kg)	
				Double acting	Single acting
CHG-(R*)-15	Rc1/2	10	3	1.1	1.2
CHG-(R*)-20	Rc3/4	14	6	1.3	1.4
CHG-(R*)-25	Rc1	19	11	1.5	2.4
CHG-(R*)-32	Rc1 1/4	23	16	2.3	2.8
CHG-(R*)-40	Rc1 1/2	30	28	2.8	5.0
CHG-(R*)-50	Rc2	38	47	3.7	5.9

How to order



[Example of model No.]

CHG-R1-20-N-FP2

Model: CHG

- Actuator : Single acting, normally B-C path
- Port size : Rc3/4
- Body material : Stainless steel

Code	Description
A Actuator	
Blank	Double acting
R1	Single acting, normally B-C path
R2	Single acting, normally A-C path
B Port size	
15	Rc1/2
20	Rc3/4
25	Rc1
32	Rc1 1/4
40	Rc1 1/2
50	Rc2
C Body material	
N	Stainless steel/oil-prohibited specifications

For dimensions, refer to the CHG Series in "General Purpose Valves (CB-03-1SA)".