



Pneumatic, Vacuum and Auxiliary Components
Catalog No. CB-024SA

Regulator

R1000/R 2000/R 3000

R 4000/R 6000/R8000-W-FP1 Series

Compact, pressure gauge embedded.

● Port size: Rc1/8 to Rc1

JIS symbol

RoHS

CAD

Specifications

Item	R1000-W	R2000-W	R3000-W	R4000-W	R6000-W	R8000-W
Appearance						
Working fluid	Compressed air					
Max. working pressure MPa	1.0					
Proof pressure MPa	1.5					
Ambient/fluid temperatures °C	5 to 60 *1					
Set pressure MPa	0.05 to 0.85					
Pressure relief	With relief mechanism					
Port size Rc *2	1/8, 1/4 (3/8 uses an adaptor)	1/4, 3/8 (1/2 uses an adaptor)	1/4, 3/8 (1/2 uses an adaptor)	1/4, 3/8, 1/2 (3/4 uses an adaptor)	3/4, 1 (1 1/4 uses an adaptor)	3/4, 1 (1 1/4 uses an adaptor)
Weight kg	0.16	0.31	0.45	0.7	1.0	1.6
Standard accessories	Pressure gauge, nut for panel mount					Pressure gauge

*1: The ambient/fluid temperatures of the digital pressure sensor with PPX attached "R2" are 5 to 50°C.

*2: NPT and G threads can be manufactured with CKD Sales.

Option weight

* Add to the weight of the standard accessories.

Unit: kg

Code	Pressure gauge	Pipe adaptor set							Attachment		
	T*	A6W	A8W	A10W	A15W	A20W	A25W	A32W	BW	B3W	B4W
R1000	0	0.09	0.09	0.09					0.1	0.04	
R2000	0		0.16	0.16	0.16				0.15	0.06	0.17
R3000	0		0.16	0.16	0.16				0.17	0.07	
R4000	0		0.16	0.16	0.16	0.16			0.21	0.11	
R6000	0					0.53	0.53	0.53	0.34	0.11	
R8000	0					0.53	0.53	0.53	0.36		

Code	Attachment					
	G45P	G49P	G59P	G40P	G52P	R 2
R1000	0.074	0.086	0.115	0.085	0.15	0.04
R2000	0.074	0.086	0.115	0.085	0.15	0.04
R3000	0.074	0.086	0.115	0.085	0.15	0.04
R4000	0.074	0.086	0.115	0.085	0.15	0.04
R6000	0.074	0.086	0.115	0.085	0.15	0.04
R8000	0.074	0.086	0.115	0.085	0.15	0.04

How to order

R1000 - **6** - **W** - **L** - **FP1** - **A6W** -

A Model No.

B Port size

C Option

D Pipe adaptor set (attachments)

* Refer to Pneumatic, Vacuum and Auxiliary Components (CB-024SA) for options.

E Other attachments

Code		Description		A Model No.					
B Port size				R1000	R2000	R3000	R4000	R6000	R8000
6	Rc1/8			●					
8	Rc1/4			●	●	●	●		
10	Rc3/8				●	●	●		
15	Rc1/2						●		
20	Rc3/4							●	●
25	Rc1							●	●
C Option				*1					
Pressure	Blank	0.05 to 0.85 MPa		●	●	●	●	●	●
Range	L	0.05 to 0.35 MPa	*2	●	●	●	●	●	●
Pressure	Blank	With relief mechanism		●	●	●	●	●	●
relief	N	Non-relief		●	●	●	●	●	●
Pressure	Blank	With standard pressure gauge (G401-W)		●	●	●	●	●	●
gauge	T	No pressure gauge (gauge port (1/4) is assembled sealed)		●	●	●	●	●	●
	T8	Pressure gauge ready (gauge port (1/4) is left open)		●	●	●	●	●	●
	T6	Digital pressure sensor PPX attachment option *3		●	●	●	●	●	●
Flow	Blank	Standard flow (left → right)		●	●	●	●	●	●
Direction	X1	Reverse flow (right → left)		●	●	●	●	●	●
D Pipe adaptor set (attachments)				*4, *5 Refer to CB-024SA					
Blank	Not included			●	●	●	●	●	●
A6W	Rc1/8 pipe adaptor set			●					
A8W	Rc1/4 pipe adaptor set			●	●	●	●		
A10W	Rc3/8 pipe adaptor set			●	●	●	●		
A15W	Rc1/2 pipe adaptor set				●	●	●		
A20W	Rc3/4 pipe adaptor set						●	●	●
A25W	Rc1 pipe adapter set							●	●
A32W	Rc1 1/4 pipe adapter set							●	●
E Other attachments				*6 Refer to CB-024SA					
Blank	Not included			●	●	●	●	●	●
BW	C-bracket			●	●	●	●	●	●
B3W	L type bracket			●	●	●	●	●	●
B4W	B-bracket				●				
G45P	G45D-8-P10 (L: G45D-8-P04)			●	●	●	●	●	●
G49P	G49D-8-P10(L:G49D-8-P04)			●	●	●	●	●	●
G59P	G59D-8-P10(L:G59D-8-P04)			●	●	●	●	●	●
G40P	G40D-8-P10(L:G40D-8-P04)			●	●	●	●	●	●
G52P	G52D-8-P10(L:G52D-8-P10)			●	●	●	●	●	●
R2 *3	Digital pressure sensor: PPX-R10N-6M			●	●	●	●	●	●

Precautions for model No. selection

- *1: When selecting options for several items, list options in order from the top.
- *2: The pressure gauge's indication range is 0 to 0.4MPa for option "L".
- *3: When option "T6" is selected, only "Blank" or "R2" can be selected for **E** Other attachments (included). The digital pressure sensor PPX mounting port (Rc1/8) is assembled open.
- *4: The pipe adaptor set and C type bracket cannot be used together.
- *5: The joiner set is attached with the pipe adapter set.
- *6: An R thread pressure gauge is attached.
- *7: For mounting an L type bracket, refer to (Pneumatic, Vacuum and Auxiliary Components (CB-024SA)).

For dimensions, refer to the regulator in "Pneumatic, Vacuum and Auxiliary components (CB-024SA)".



Pneumatic, Vacuum and Auxiliary Components
Catalog No. CB-024SA

Reverse regulator

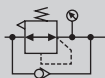
R 1100/R 2100/R 3100

R 4100/R 6100/R 8100-W-FP1 Series

From secondary pressure to primary side with reverse flow function built in.

● Port size: Rc1/8 to Rc1

JISCode



Specifications

Item	R1100-W	R2100-W	R3100-W	R4100-W	R6100-W	R8100-W
Appearance						
Working fluid	Compressed air					
Max. working pressure MPa	1.0					
Proof pressure MPa	1.5					
Ambient/fluid temperatures °C	5 to 60 *2					
Set pressure (*1) MPa	0.05 to 0.85					
Pressure relief	With relief mechanism					
Port size Rc *4	1/8, 1/4 (3/8 uses an adaptor)	1/4, 3/8 (1/2 uses an adaptor)	1/4, 3/8 (1/2 uses an adaptor)	1/4, 3/8, 1/2 (3/4 uses an adaptor)	3/4, 1 (1 1/4 uses an adaptor)	3/4, 1 (1 1/4 uses an adaptor)
Weight kg	0.16	0.31	0.45	0.7	1.0	1.6
Standard accessories	Pressure gauge, nut for panel mount					Pressure gauge

*1: Refer to the set pressure range for the back pressure given in (Pneumatic, Vacuum and Auxiliary Components (CB-024SA)) when selecting the model.

*2: The ambient/fluid temperature of the digital pressure sensor with PPX attached "R2" is 5 to 50°C.

*3: Check that the primary pressure is at least 0.05MPa or more than the secondary pressure.

*4: NPT and G threads can be manufactured with CKD Sales.

Option weight

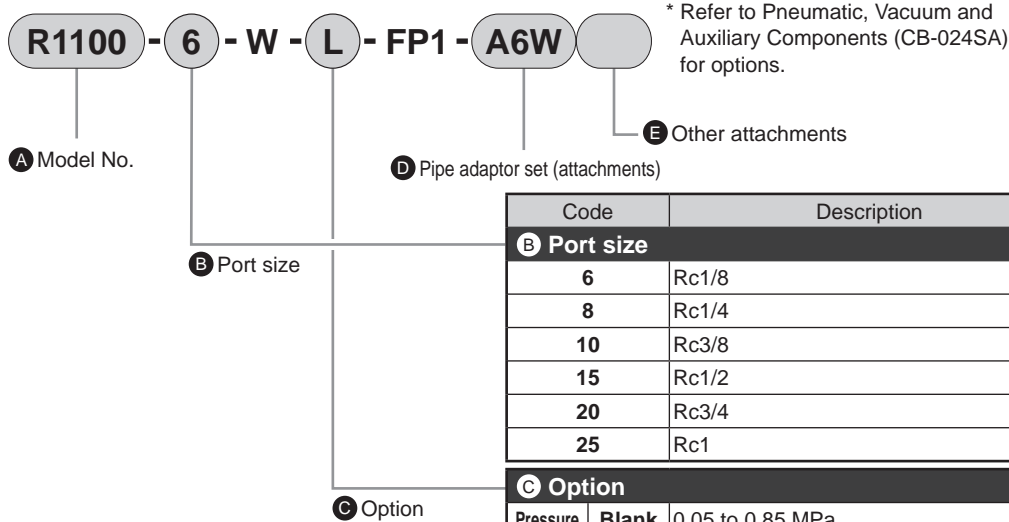
* Add to the weight of the standard accessories.

Unit: kg

Code	Pressure gauge	Pipe adaptor set							Attachment		
	T*	A6W	A8W	A10W	A15W	A20W	A25W	A32W	BW	B3W	B4W
R1100	0	0.09	0.09	0.09					0.1	0.04	
R2100	0		0.16	0.16	0.16				0.15	0.06	0.17
R3100	0		0.16	0.16	0.16				0.17	0.07	
R4100	0		0.16	0.16	0.16	0.16			0.21	0.11	
R6100	0					0.53	0.53	0.53	0.34	0.11	
R8100	0					0.53	0.53	0.53	0.36		

Code	Attachment					
	G45P	G49P	G59P	G40P	G52P	R 2
R1100	0.074	0.086	0.12	0.085	0.15	0.04
R2100	0.074	0.086	0.12	0.085	0.15	0.04
R3100	0.074	0.086	0.12	0.085	0.15	0.04
R4100	0.074	0.086	0.12	0.085	0.15	0.04
R6100	0.074	0.086	0.12	0.085	0.15	0.04
R8100	0.074	0.086	0.12	0.085	0.15	0.04

How to order



		A Model No.					
		R1100	R2100	R3100	R4100	R6100	R8100
for options.							
E Other attachments							
tor set (attachments)							
Code	Description						
B Port size							
6	Rc1/8	●					
8	Rc1/4	●	●	●	●		
10	Rc3/8		●	●	●		
15	Rc1/2				●		
20	Rc3/4					●	●
25	Rc1					●	●
C Option							
		*1, *2					
Pressure Range	Blank	0.05 to 0.85 MPa	●	●	●	●	●
	L	0.05 to 0.35 MPa *3	●	●	●	●	●
Pressure relief	Blank	With relief mechanism	●	●	●	●	●
	N	Non-relief	●	●	●	●	●
Pressure gauge	Blank	With standard pressure gauge (G401-W)	●	●	●	●	●
	T	No pressure gauge (gauge port (1/4) is assembled sealed)	●	●	●	●	●
	T8	Pressure gauge ready (gauge port (1/4) is left open)	●	●	●	●	●
	T6	Digital pressure sensor PPX attachment option *4	●	●	●	●	●
Flow	Blank	Standard flow (left → right)	●	●	●	●	●
Direction	X1	Reverse flow (right → left)	●	●	●	●	●
D Pipe adaptor set (attachments)		*5, *6		Refer to CB-024SA			
Blank	Not included	●	●	●	●	●	●
A6W	Rc1/8 pipe adaptor set	●					
A8W	Rc1/4 pipe adaptor set	●	●	●	●		
A10W	Rc3/8 pipe adaptor set	●	●	●	●		
A15W	Rc1/2 pipe adaptor set		●	●	●		
A20W	Rc3/4 pipe adaptor set				●	●	●
A25W	Rc1 pipe adapter set					●	●
A32W	Rc1 1/4 pipe adapter set					●	●
E Other attachments		*7		Refer to CB-024SA			
Blank	Not included	●	●	●	●	●	●
BW	C-bracket	●	●	●	●	●	●
B3W	L type bracket *8	●	●	●	●	●	
B4W	B-bracket		●				
G45P	G45D-8-P10 (L: G45D-8-P04)	●	●	●	●	●	●
G49P	G49D-8-P10(L:G49D-8-P04)	●	●	●	●	●	●
G59P	G59D-8-P10(L:G59D-8-P04)	●	●	●	●	●	●
G40P	G40D-8-P10(L:G40D-8-P04)	●	●	●	●	●	●
G52P	G52D-8-P10(L:G52D-8-P10)	●	●	●	●	●	●
R2 *4	Digital pressure sensor: PPX-R10N-6M	●	●	●	●	●	●

⚠ Precautions for model No. selection

*1: When selecting options for several items, list options in order from the top.

*2: Positions of check valve and pressure gauge cannot be changed. If the IN and OUT directions must be reversed, indicate "X1" at the end of the option field.

*3: The pressure gauge's indication range is 0 to 0.4MPa for option "L".

*4: When option "T6" is selected, only "Blank" or "R2" can be selected for E Other attachments (included). The digital pressure sensor PPX mounting port (Rc1/8) is assembled open.

*5: The pipe adaptor set and C type bracket cannot be used together.

*6: The joiner set is attached with the pipe adapter set.

*7: An R thread pressure gauge is attached.

*8: For mounting an L type bracket, refer to (Pneumatic, Vacuum and Auxiliary components (CB-024SA)).

For dimensions, refer to the reverse regulator in "Pneumatic, Vacuum and Auxiliary components (CB-024SA)".