



To Use This Product Safely

Be sure to read this before use. For general cylinder information, see Intro 41, and for Cylinder Switches, see P. 1512.

Individual Precautions: Stopper cylinder STK Series

Design / Selection

1. Common

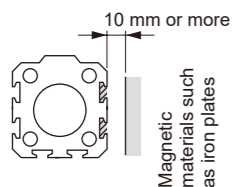
CAUTION

■ When using a stopper cylinder to brake loads directly connected to cylinder, etc

- The specified range is only for stopping pallets on the conveyor. When stopping a load directly connected to a cylinder, etc. with a stopper cylinder, the cylinder thrust becomes a lateral load, so please select a cylinder so that it is within the range of allowable absorbed energy and allowable lateral load.

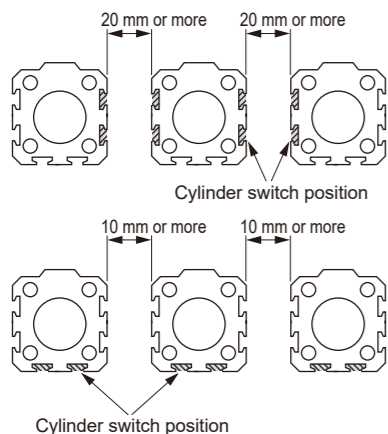
■ If there is a magnetic body such as an iron plate near the cylinder switch, it will cause a malfunction, so please keep a distance of 10 mm or more from the cylinder surface.

(Common to all Bore Sizes)

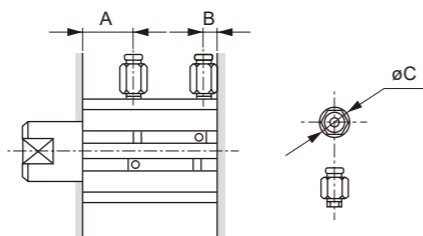


■ The cylinder switch could malfunction if cylinders are installed adjacently. Check that the following distances are allocated between cylinders.

(Common to all Bore Sizes)



■ There are restrictions on usable piping fittings. Refer to the following and use accordingly.



Item Bore Size (mm)	Port Size	Port position dimension		Usable Fittings	Fitting outer diameter øC	Unusable fittings
		A	B			
ø20	M5	8	5.5	SC3W-M5-4 SC3W-M5-6 GWS4-M5-S GWS4-M5 GWL4-M5 GWL6-M5	ø11 or less	GWS6-M5
		8	8	SC3W-6-4/6/8 GWS4-6 GWS6-6 GWS8-6 GWL4-6 GWL6-6		
ø32	Rc1/8	12	8.5	SC3W-8-6/8/10 GWS4-8 GWS6-8 GWS10-8 GWL4 to 12-8	ø15 or less	GWS10-6 GWL-8-6 GWL10-6
ø40		10.5	10.5			
ø50	Rc1/4	10.5	10.5		ø21 or less	GWS-12-8

2. Single Acting type STK-Y

CAUTION

■ Do not apply pressure from the head side for the Single Acting type.

- If air is introduced for the head side for Single Acting, air leakage will occur.

■ Do not leave Single Acting cylinders pressurized. If left pressurized, the Piston Rod may not return by spring force when the pressure is released.

3. Double Acting type with spring STK-Y1

CAUTION

■ Spring integrated Double Acting is usually used as a Double Acting. When the air is shut off for any reason, the rod is Push and the stopper function is maintained.

4. Rod End shape chamfered type with female thread STK-M-N11

CAUTION

■ Avoid using the product so as to apply rotation torque to the Piston Rod.

The non-rotating spacer may come off and the orientation of the chamfered Piston Rod may change.

During Use

1. Common

CAUTION

■ Do not apply rotation torque to the Piston Rod. Install the Piston Rod so that its contact surface is parallel to the pallet contact surface to avoid applying rotational torque.

■ Avoid using oil, etc., for the Piston Rod sliding section.

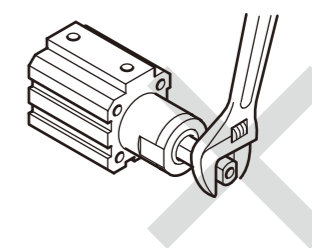
- Otherwise, cylinder malfunctions, etc., may result.

■ When changing the direction of the rotation-stop type, loosen the rod cover Set Screws (3 positions) to change position arbitrarily and then tighten them again.

2. Rod End shape chamfered type with female thread STK-M-N11

CAUTION

■ When fixing a workpiece onto the end of the Piston Rod, push the Piston Rod to the stroke end and apply a wrench to the section projecting from the rod's parallel section. Be careful when tightening so that torque is not applied to the Cylinder Body.



For precautions during mounting, installation, adjustment, use, and maintenance, refer to "During Use" in this catalog and the CKD Components Product website (<https://www.ckd.co.jp/kiki/en/>) -> "Model No." -> [Instruction Manual](#).