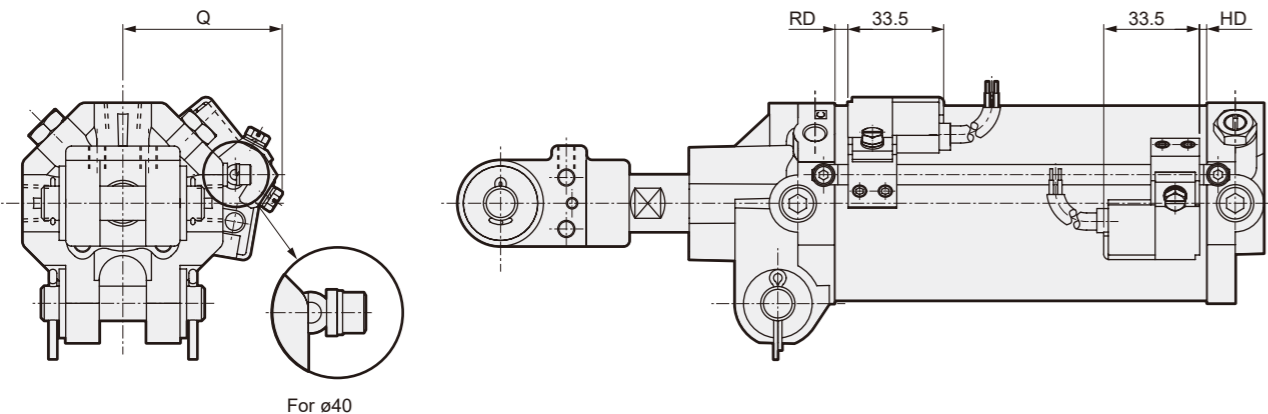


CAC4 Series External Dimensions Diagram with Switch

●H0, H0Y

Tie rod mounting
• CAC4-L2, CAC4-G4L2



Code	Q	H0, H0Y		
		RD	HD	
UCAC2	ø40	46	4.5	2.5
CAC-N	ø50	50.5	4.5	2.5
	ø63	56	4.5	2.5
	ø80	65	19.5	12.5

Note: For switch mountability, refer to the model number display method for each variation.



Pneumatic Components

To Use This Product Safely

Be sure to read this before use. For general cylinder information, see Intro 41, and for cylinder switches, see P. 1512.

Individual Precautions: Clamp cylinder CAC4 Series

Design / Selection

1. Weld spatter resistant type CAC4-G4

Warning

■ This cylinder series has improved durability in a spatter scattering atmosphere compared to general-purpose cylinders. However, please note that durability may be inferior to general type cylinders when used in other atmospheres.

During Use

1. Common (T type switch: Band mounting method)

Warning

■ When Moving the Switch Position in the Stroke Direction

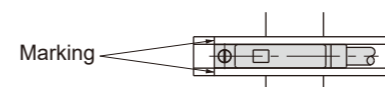
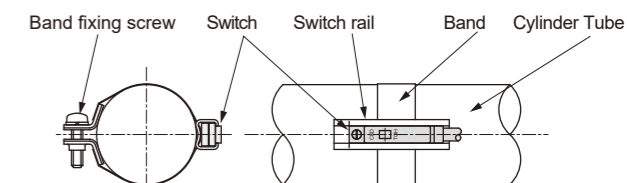
- The 1-color indicator switch can be finely adjusted by about ± 3 mm from the mounting position at the time of shipment. If the adjustment range exceeds ± 3 mm, or if fine-tuning the position of a 2-color indicator switch, move the band position.
- Loosen the switch mounting screw, move the switch along the rail, and tighten at the specified position. For T2, T3, T0, T5, use a flat-head screwdriver (watchmaker's screwdriver, precision screwdriver, etc.) with a grip diameter of 5 to 6 mm, tip shape width of 2.4 mm or less, and thickness of 0.3 mm or less to tighten the switch fixing screw with a tightening torque of 0.1 to 0.2 N·m. For T□C, T2J, T2Y, T3Y, tighten with a torque of 0.5 to 0.7 N·m.
- The switch rail has a marking 4 mm from the end face of the rail. Use it as a guide for mounting position when replacing the switch. Note that the marking on the switch rail is set to the switch maximum sensitivity position, which is the switch mounting position of the external dimensions. If the switch type changes or the band is moved, the maximum sensitivity position changes, so adjust the position each time.

■ When Moving the Switch Position in the Circumferential Direction

- Loosen the band fixing screw, move the switch rail circumferentially, and tighten it at the specified position. The tightening torque for the band fixing screw is 0.6 to 0.8 N·m.

■ When Moving the Band Position

- Loosen the band fixing screw, move the switch rail and band along the cylinder tube, and tighten them at the specified position. The tightening torque for the band fixing screw is 0.6 to 0.8 N·m.



For precautions during mounting, installation, adjustment, use, and maintenance, refer to "During Use" in this catalog and the CKD Components Product website (<https://www.ckd.co.jp/kiki/en/>) -> "Model No." -> [Instruction Manual](#).