



To Use This Product Safely

Be sure to read this before use. For general cylinder information, see Intro 41, and for cylinder switches, see P. 1512.

Individual Precautions: Linear guide lock LMB Series

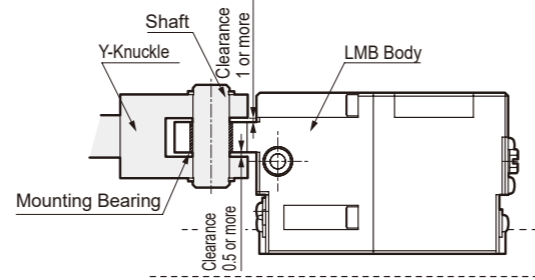
Design / Selection

CAUTION

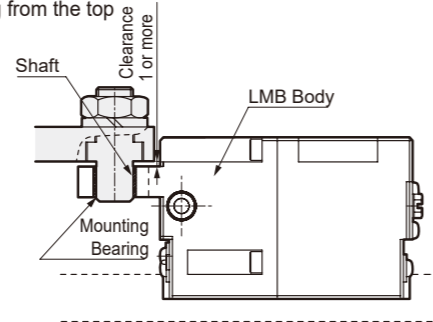
- Make sure that impact load is not applied to the Lock Units. There is a possibility of slipping due to impact force.
- Do not apply the lateral load moment to a lock unit.
- Avoid use in very dusty areas, or where water or oil could come in contact. This will cause a decrease in holding force.
- Do not place a workpiece directly onto the lock unit.

Mounting Method

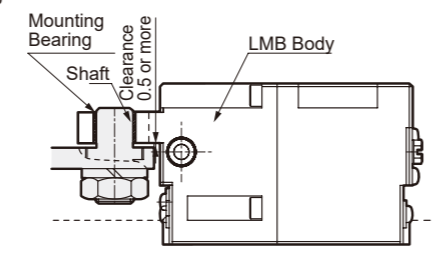
- Example of Y rod clevis installation



- Fixing from the top



- Fixing from the bottom



Insert a shaft (pin) into the mounting bearing and connect it to the slide table. At that time, provide clearance as shown in the diagram above. Structurally, the LMB body moves up and down during lock operation, so if it is fixed without clearance, the lock will not engage.

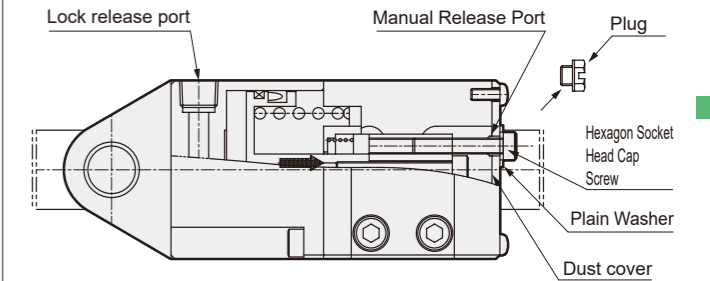
During Use

Warning

- Never disassemble the lock unit, as this is dangerous.

CAUTION

How to unlock manually



- Confirm that external force is not applied when there is no air at the lock release port, and then disconnect the plug.
- From the hole from which the plug was removed, insert the M3×18 (LMB-SR-15) or M4×22 (LMB-SR-20, 25) Hexagon Socket Head Cap Screw until the screw is engaged. When inserting Hexagon Socket Head Cap Screws, insert a flat washer and prevent the bolt seating surface from contacting the dustproof cover.
- From the state where the threads are caught, if the screw is screwed in until it no longer moves, the lock will be released and freed.

- *1) The product is in a manually released state at the time of shipment. Store the Hexagon Socket Head Cap Screws and flat washers so as not to lose them.
- *2) Do not use Hexagon Socket Head Cap Screws of sizes other than those listed above. There is a possibility of screw damage or inability to release the lock.
- *3) If manually released with the Hexagon Socket Head Cap Screw seating surface in contact with the dustproof cover, the dustproof cover will be scraped and dust will be generated. Also, since the plug may not be able to be screwed in, insert a flat washer and manually release it in a non-contact state.

For precautions during mounting, installation, adjustment, use, and maintenance, refer to "During Use" in this catalog and the CKD Components Product website (<https://www.ckd.co.jp/kiki/en/>) -> "Model No." -> [Instruction Manual](#).