



Components for Process Gas

To Use This Product Safely

Please be sure to read this before use.
For General Precautions refer to Intro 9.

Individual Precautions: Components for Integrated Gas Supply System, IAGD5 Series

Design / Selection

1. Confirmation of Specifications

Warning

- Incorrect equipment selection and handling can cause problems not only in this product, but also to your system. Please be sure to confirm the specifications of this product and its compatibility with your system before use.
- Check the compatibility between the gas contact part materials and working fluid before use.
- Use within the specified fluid temperature and pressure range.

2. Ambient Environment

Caution

- Do not use in atmospheres containing corrosive gases or in locations where substances that may affect the product such as chemicals, salt water, water or steam could make contact. Use within the specified ambient temperature range.

3. Mounting

Warning

- Incorrect mounting and piping will result in product trouble, may cause trouble in the user's system, and may result in death or serious injury. The user is responsible for making sure that the operator has read the instruction manual and fully comprehends the system. After mounting, perform a proper functional inspection to ensure it is installed correctly.

Caution

- This product is assembled in class 10 and class 100 cleanrooms after precision cleaning treatment. Open the clean pack inside the packaging in a clean environment immediately before mounting.
- Fittings When mounting the product, touching the gas contact parts (body interior, seal surface) may result in adherence of foreign matter and contamination of high purity gas. Be careful not to touch the gas-wetted parts of this product during mounting.

4. Securing Space

Caution

- Secure sufficient space for installation, removal, piping and wiring work.
- Secure sufficient space for maintenance and inspection.

5. Piping

Warning

- Foreign materials or burrs in the piping and piping work could damage the valve seat or diaphragm seal, and lead to leaks. Before installing the valve, be sure to remove any debris or burrs and take measures such as installing a primary side filter.

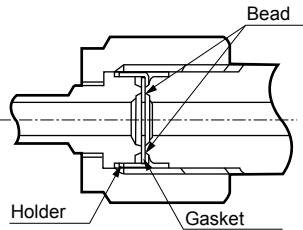
Caution

- Make sure not to use the wrong connecting port when connecting the pipes to the product.
- When piping, do not apply tension, compression, bending or other forces to the valve body from the piping.
- If the tube for piping is bent, it will cause malfunctions; pipe with suitable tube lengths.
- Use the driving solenoid valve connected to the drive unit according to the specifications or applications.
- As for operating air, use air or inert gas passed through a filter with a filtration rating of 5 μm or more.

- Make sure that there is no Fittings foreign materials, scratches or burrs on the seal section before tightening the tube with the following procedures.

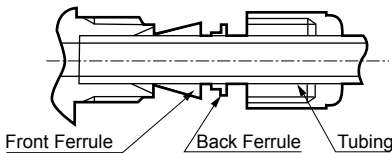
①Fitting Tightening Method

- JXR Fitting (when the gasket material is nickel/SUS316)
Hand-tighten the nut until the gasket contacts the bead surface, then use a tool to tighten it an additional 1/8 turn. (For other materials, please consult with us)



● Double Ferrule Fitting

Confirm that the front ferrule, back ferrule and nuts are properly attached, and then insert the tube until it contacts the back of the body. Tighten the nuts as far as possible by hand, and then tighten 1 1/4 turn with a tool.



- ②After tightening the fitting, be sure to perform a leak test to confirm there are no leaks.

6. Baking

Caution

- Baking temperature should be within the specified temperature range of the product. Perform baking with the valve in the fully open state.

7. Purging

Caution

- When removing valves using toxic, combustible or corrosive gases, purge with an inert gas such as nitrogen gas before removal.

8. During Use

Warning

- Use this product within the specifications range.
- Do not touch heater-equipped products with hands or body. Direct contact may cause burns.

Caution

- Do not use valves as a footing or place any heavy objects on top of the valves.

9. Maintenance and Inspection

Warning

- Operate in accordance with the instruction manual.
- Always turn the power OFF and release any fluids or pressure before starting work.
- Fully replace the residual gas with inert gas, etc., before starting work so that it does not affect people or the surrounding components.
- After work, always carry out a leak test, and confirm that there are no leaks.
- Do not disassemble the valve.
If the product is disassembled without authorization and then repaired or reused, it will no longer be covered by the product warranty.

IAGD5 Series

Individual Precautions