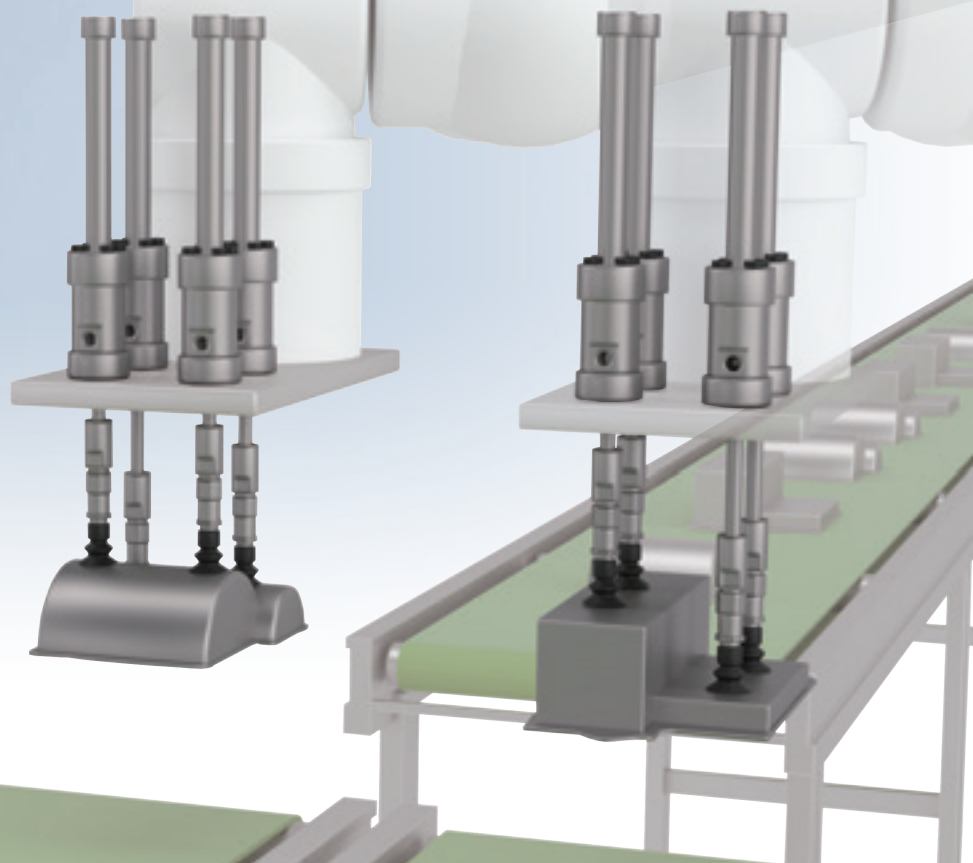


Lighter and More Compact Shape-Adapting Suction Transport

**Holds pad at any conforming position
Ideal for multi-model piece picking**

Handling irregularly
shaped workpieces is
now possible without
setup changes!



Dedicated jig not required

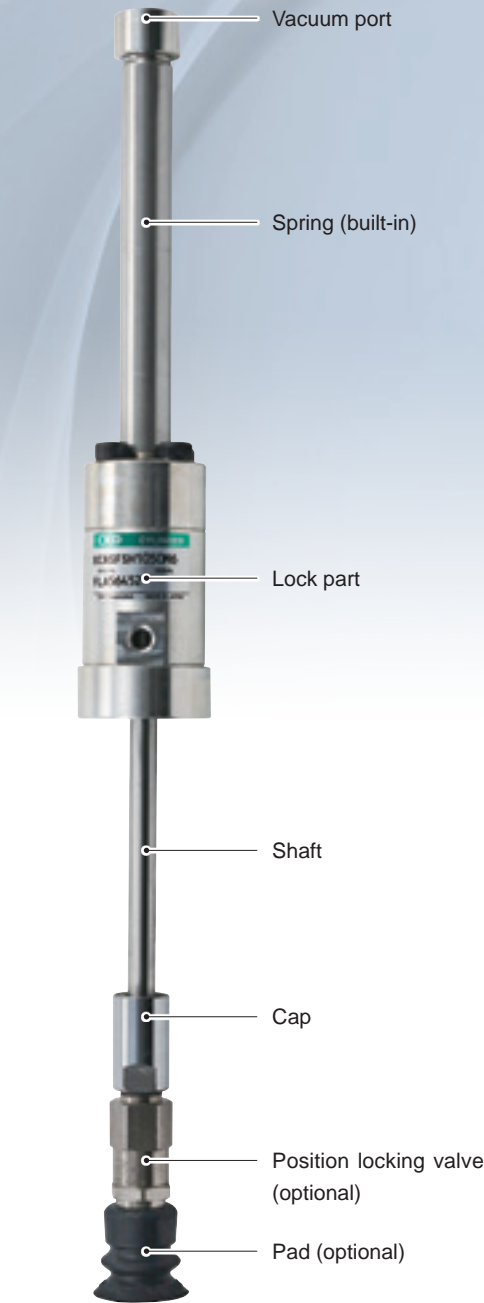
High design freedom

Workpiece damage prevention

Lightweight / space saving

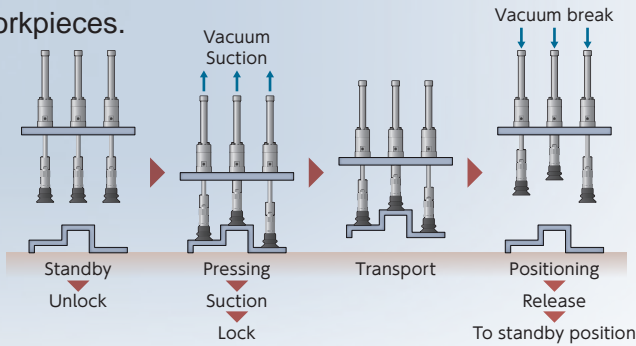
3D Suction Hand FSH Series

One-way lock mechanism in the buffer



Dedicated jig not required

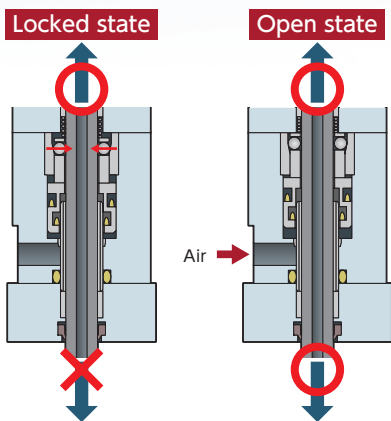
The spring and lock allow the pad position to conform to the workpiece shape, enabling handling of various types of workpieces.



Prevents damage to workpieces

One way lock mechanism

The rod is free in the opposite direction of the lock, so it doesn't damage the workpiece.



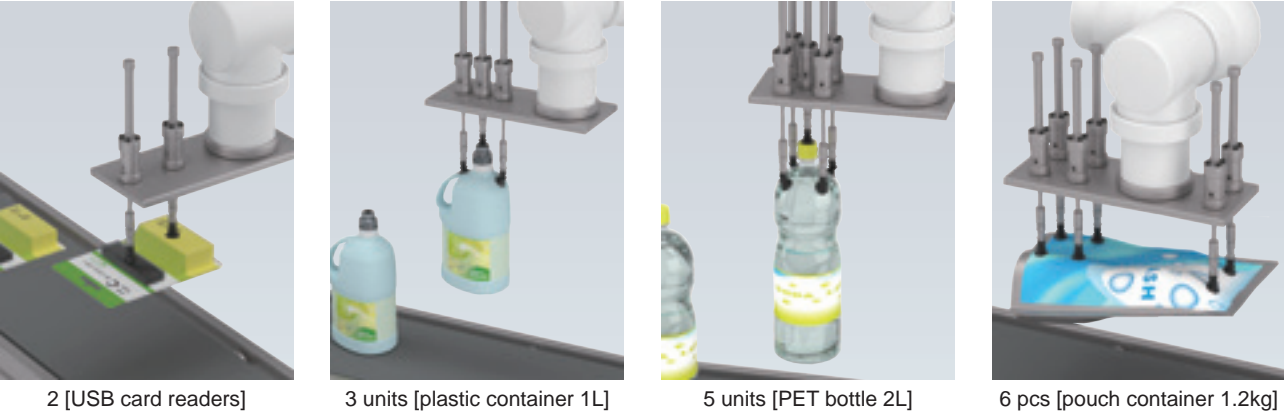
Lock structure
Locks using the wedge effect of the tapered shape of the lock housing and steel balls.

Lightweight and space saving

Being lightweight and compact, it's ideal for robot hands where payload capacity is a concern.

Flexible arrangement is possible to match the workpiece

The array and quantity can be freely selected according to the size and shape of the workpiece.



3D suction hand
XCAS-FSH Series
●Size: 10N, 50N

Specifications

Item		XCAS-FSH-10	XCAS-FSH-50
Holding force	N	10	50
Locking method		Forward locking	
Shaft actuation		Single acting / pull type	
Working fluid		Compressed air	
Max. working press. (lock part)	MPa	0.7	
Min. working press. (lock part)	MPa	0.35	
Stroke	mm	10, 25, 50, 75, 100	
Lubrication		Not available	
Port size	Vacuum pull	M5	Rc1/8
	Lock release part	M5	Rc1/8
Pad mounting screw		M5, M6, G1/8	

Weight

Stroke (mm)	XCAS-FSH-10	XCAS-FSH-50
10	121	211
25	133	220
50	150	234
75	170	249
100	188	264

Single acting spring load

Holding force	At stroke of 0 mm	At full stroke operation
10 N	0.2	0.4
50 N	0.5	0.8

How to order

Holding force 10 N
XCAS - FSH - 10 - 50 - M5 - FLA56452

Holding force 50 N
XCAS - FSH - 50 - 50 - M5 - FLA56453

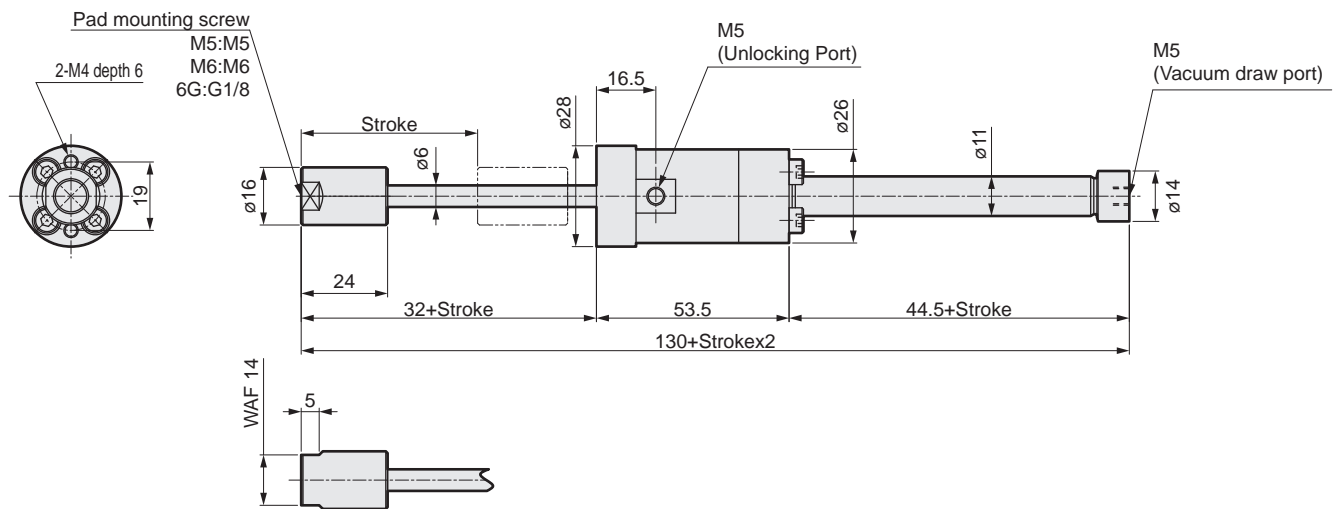
Code	Description
① Stroke (mm)	10, 25, 50, 75, 100
② Pad mounting screw	M5, M6, 6G
	M5, M6, G1/8

[Example of model No.]
XCAS-FSH-10-50-6G-FLA56452

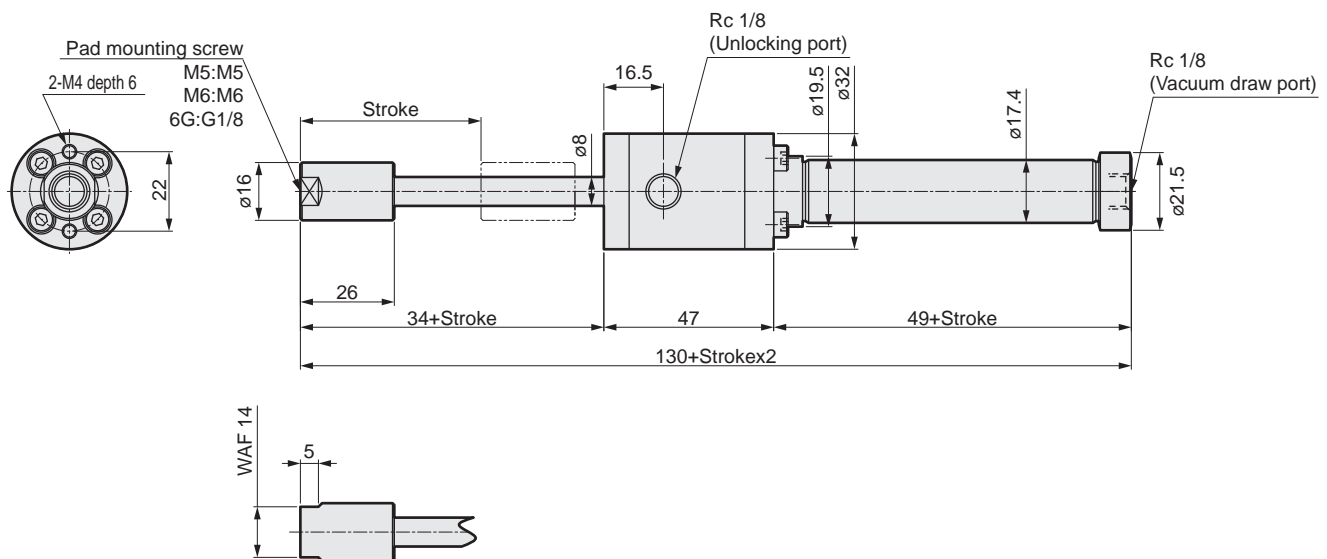
Model: 3D Suction hand
①Stroke: 50 mm
②Pad mounting screw: G 1/8

Dimensions

●XCAS-FSH-10-FLA56452 (holding force 10 N)



●XCAS-FSH-50-FLA56453 (holding force 50 N)



Always read the precautions described in "Pneumatic Cylinders II" (Catalog No.CB-030SA) before use.

The goods and/or their replicas, the technology and/or software found in this catalog are subject to complementary export regulations by Foreign Exchange and Foreign Trade Law of Japan. The law requires a license from Ministry of Economy, Trade and Industry to export them.

CKD Corporation

[Website]
<https://www.ckd.co.jp/en/>

Head Office • Plant
 Tokyo Office
 Osaka Office

2-250, Oujii, Komaki, Aichi 485-8551
 4F, Bunkahousou Media Plus, 1-31-1, Hamamatsu-cho,
 Minato-ku, Tokyo 105-0013
 6F, PMO EX Shin-Osaka, 4-2-10 Miyahara,
 Yodogawa-ku, Osaka 532-0003

TEL(0568)77-1111 FAX(0568)77-1123
 TEL(03)5402-3620 FAX(03)5402-0120
 TEL(06)6396-9630 FAX(06)6396-9631