

Discontinued some variations

Electric actuator Ball screw drive Slider



ETS Multi-Axis Series

- Servo motor capacity: 200 W/400 W/750 W
- 2-axis combination X-Y axes/with support guide (G type)



How to order

ETS - 760 G 1 - 040 030 - M N W

A Combined axes

760	ETS-17 × ETS-14
870	ETS-22 × ETS-17

B Combination

G	X-Y axes with support guide
---	-----------------------------

C Combination direction

1 to 4	Confirm the table below.
--------	--------------------------

D 1st axis stroke

010	100 mm to to (50 mm pitch)
150	1500 mm

E 2nd axis stroke

020	200 mm to to (50 mm pitch)
105	1050 mm

G Brake *1

N	None
---	------

H Origin/Limit sensor (3 pcs × 2 axes) *2

N	None
W	Yes

F Mounted motor specification *3

M	Select the mounted motor specification from the table below.
Y	
P	
O	

F Mounted motor specification

Manufacturer	200 W	400 W	750 W
Mitsubishi Electric Corporation	M	M	M
Delta Electronics Co., Ltd.	M	M	M
Sanyo Denki Co., Ltd.	M	M	-
YASKAWA Electric Corporation	Y	Y	Y
Keyence Corporation	Y	Y	Y
Panasonic Corporation	P	P	P
OMRON Corporation	O	O	O

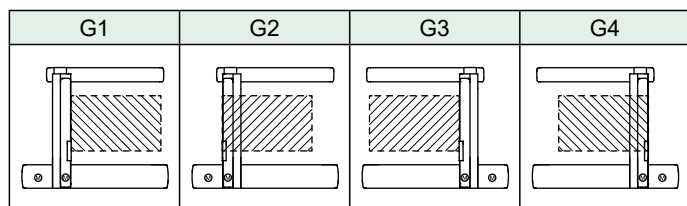
*1: The brake targets the 2nd axis.

*2: The user can adjust the sensor position. (Included at shipment)

*3: When "O" is selected for Mounted motor specification, the motor specification code for the 1st and 2nd axes is "M" or "P".

*Refer to page 164 for the recommended motor model No.

C Combination direction



Servo motor compatible

Stepper motor compatible

Safety precautions

Discontinued some variations

ETS Multi-Axis Series

Specification (X-Y axes) With support guide

EBS
EBR
ETS
ETS Multi-Axis
ECS
ETV
ECV
EKS
EBS
EBR
ETS
ECS
Stepper motor compatible
Safety precautions

Axis combination specifications

Ⓒ Combination direction and motor mounting direction

Combined axes	Combination	Combination direction	Motor mounting direction and motor capacity							
			1st axis				2nd axis			
			Model	200 W	400 W	750 W	Model	200 W	400 W	750 W
ETS-760	G	1 to 4	ETS-17	-	B	-	ETS-14	B	-	-
ETS-870	G	1 to 4	ETS-22	-	-	B	ETS-17	-	B	-

*B: Built-in mount

Ⓓ stroke length

Combined axes	Combination	1st axis			2nd axis		
		Model	Screw lead (mm)	Stroke (mm)	Model	Screw lead (mm)	Stroke (mm)
ETS-760	G	ETS-17	20	100 to 1250	ETS-14	20	200 to 850
ETS-870		ETS-22	25	100 to 1500	ETS-17	20	200 to 1050

Grease nipple

Combined axes	Combination	Combination direction	1st axis		2nd axis	
			Model	Grease nipple position	Model	Grease nipple position
ETS-760	G	1	ETS-17	L	ETS-14	R
		2		L		L
		3		R		L
		4		R		R
ETS-870	G	1	ETS-22	L	ETS-17	R
		2		L		L
		3		R		L
		4		R		R

*R: Right side L: Left side

Discontinued some variations

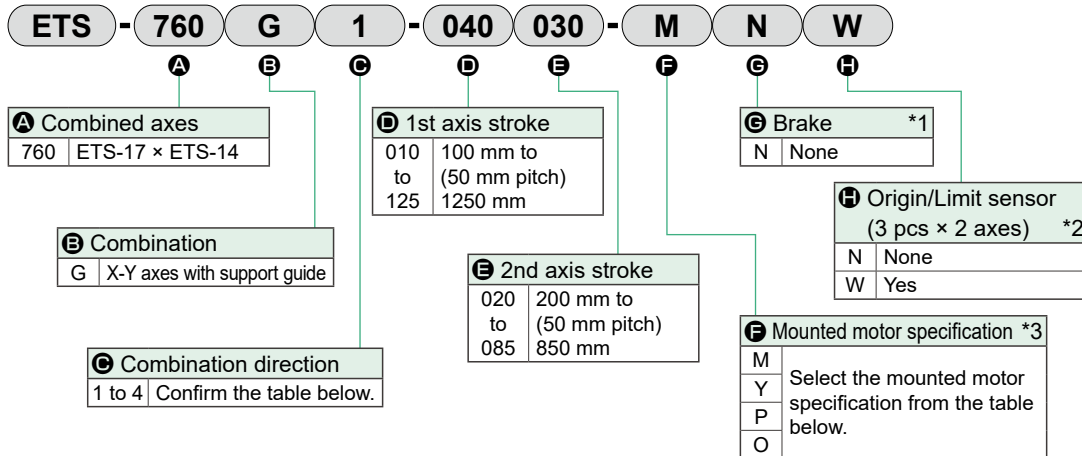
Electric actuator Ball screw drive Slider

ETS Multi-Axis Series

- Servo motor capacity: 400 W/200 W
- 2-axis combination X-Y axes/with support guide (G type)



How to order

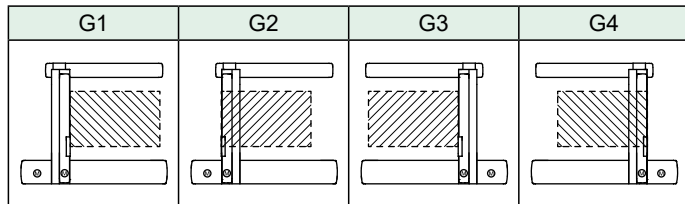


*1: The brake targets the 2nd axis.

*2: The user can adjust the sensor position. (Included at shipment)

*3: When "O" is selected for Mounted motor specification, the motor specification code for the 1st and 2nd axes is "M" or "P".

C Combination direction



C Combination direction and motor mounting direction

Combined axes	Combination	Combination direction	Motor mounting direction and motor capacity			
			1st axis		2nd axis	
			Model	400 W	Model	200 W
ETS-760	G	1	ETS-17	B	ETS-14	B
		2		B		B
		3		B		B
		4		B		B

*B: Built-in mount

D E stroke length

Combined axes	Combination	1st axis			2nd axis		
		Model	Screw lead (mm)	Stroke (mm)	Model	Screw lead (mm)	Stroke (mm)
ETS-760	G	ETS-17	20	100 to 1250	ETS-14	20	200 to 850

Grease nipple

Combined axes	Combination	Combination direction	1st axis		2nd axis	
			Model	Grease nipple position	Model	Grease nipple position
ETS-760	G	1	ETS-17	L	ETS-14	R
		2		L		L
		3		R		L
		4		R		R

*R: Right side L: Left side

F Mounted motor specification

Manufacturer	200 W	400 W
Mitsubishi Electric Corporation	M	M
Delta Electronics Co., Ltd.	M	M
Sanyo Denki Co., Ltd.	M	M
YASKAWA Electric Corporation	Y	Y
Keyence Corporation	Y	Y
Panasonic Corporation	P	P
OMRON Corporation	O	O

*Refer to page 164 for the recommended motor model No.

Discontinued some variations

ETS Multi-Axis Series

Dimensions (X-Y axes) With support guide

EBS
EBR
ETS
ETS Multi-Axis
ECS
ETV
ECV
EKS
EBS
EBR
ETS
ECS

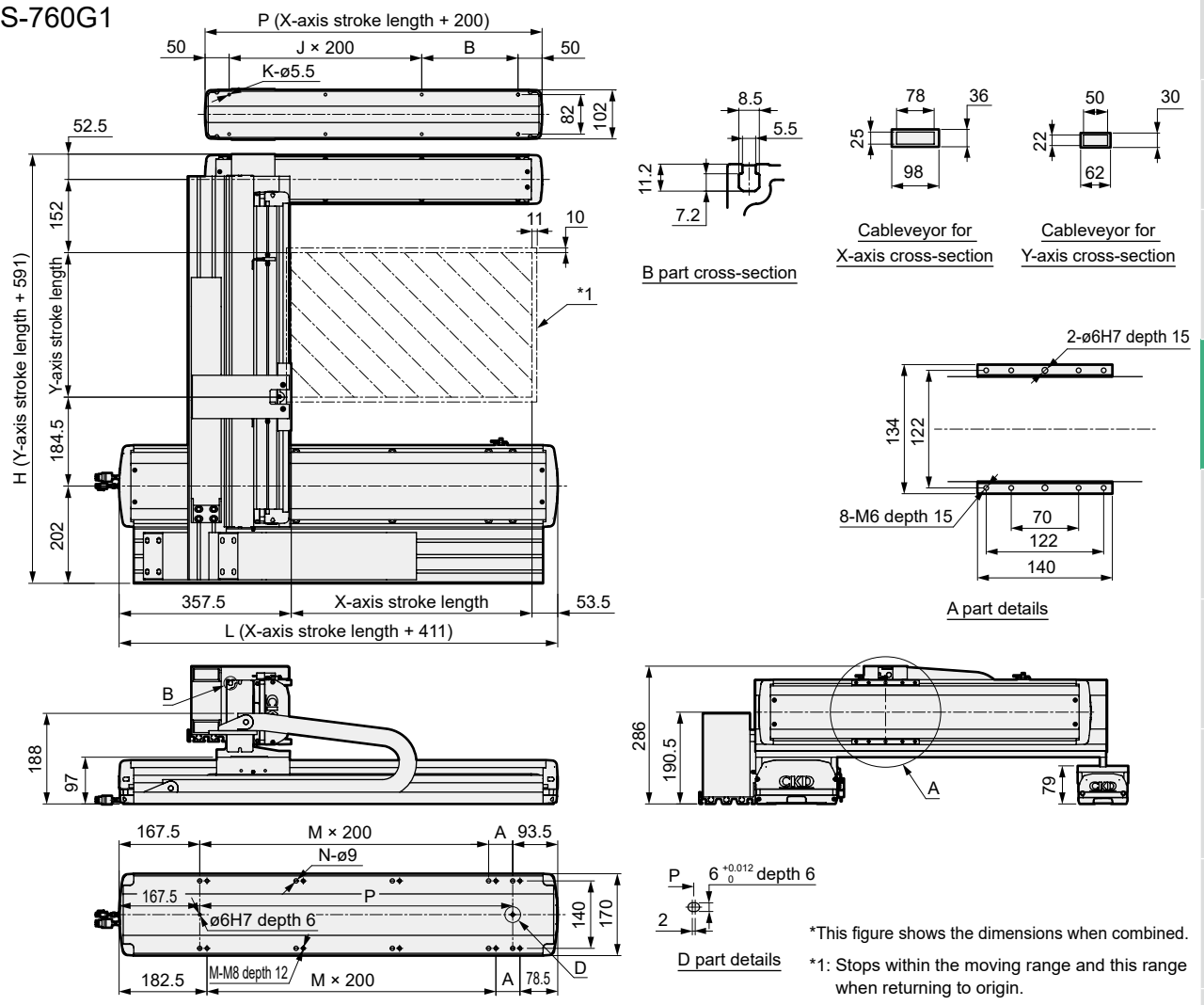
Servo motor compatible

Stepper motor compatible

Safety precautions

Dimensions

● ETS-760G1



X-axis stroke (mm)	100	150	200	250	300	350	400	450	500	550	600	650	700	750	800	850	900	950	1000	1050	1100	1150	1200	1250
L	511	561	611	661	711	761	811	861	911	961	1011	1061	1111	1161	1211	1261	1311	1361	1411	1461	1511	1561	1611	1661
A	50	100	150	200	50	100	150	200	50	100	150	200	50	100	150	200	50	100	150	200	50	100	150	200
M	1	1	1	1	2	2	2	2	3	3	3	3	4	4	4	4	5	5	5	5	6	6	6	6
N	6	6	6	6	8	8	8	8	10	10	10	10	12	12	12	12	14	14	14	14	16	16	16	16
P	250	300	350	400	450	500	550	600	650	700	750	800	850	900	950	1000	1050	1100	1150	1200	1250	1300	1350	1400
Max. working speed (mm/s)	1000																	900	800	700	600			

X-axis support guide stroke (mm)	100	150	200	250	300	350	400	450	500	550	600	650	700	750	800	850	900	950	1000	1050	1100	1150	1200	1250
P	300	350	400	450	500	550	600	650	700	750	800	850	900	950	1000	1050	1100	1150	1200	1250	1300	1350	1400	1450
B	200	50	100	150	200	50	100	150	200	50	100	150	200	50	100	150	200	50	100	150	200	50	100	150
J	0	1	1	1	1	2	2	2	2	3	3	3	3	4	4	4	4	5	5	5	5	6	6	6
K	4	6	6	6	6	8	8	8	8	10	10	10	10	12	12	12	12	14	14	14	14	16	16	16

Y-axis stroke (mm)	200	250	300	350	400	450	500	550	600	650	700	750	800	850
H	791	841	891	941	991	1041	1091	1141	1191	1241	1291	1341	1391	1441
Max. working speed (mm/s)	1000													
Max. load capacity (kg)	35										32	30		

List of attachments

[Motor mounting parts]

Model No.	Mounted motor specifications	Motor mounting direction	Mounting parts	Shipment method	Motor capacity	Motor mounting bolt
ETS-17	M	B	Coupling	Assembled at shipment	400 W	M5 4
	Y					M5 4
ETS-14	P				200 W	M4 4

*When "O" is selected for Mounted motor specification, the motor specification code for the 1st and 2nd axes is "M" or "P".

[Origin sensor/Limit sensor]

Manufacturer	Model	Quantity
OMRON Corporation	EE-SX672	6

*Refer to page 156 for sensor specifications.

[Other attachments for axis combinations]

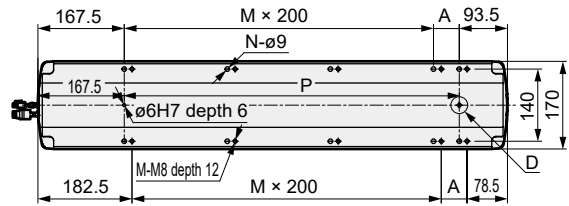
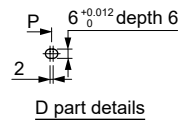
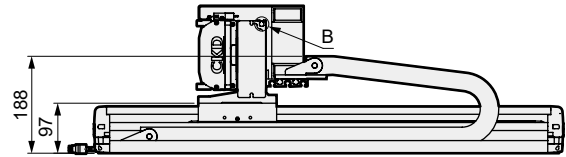
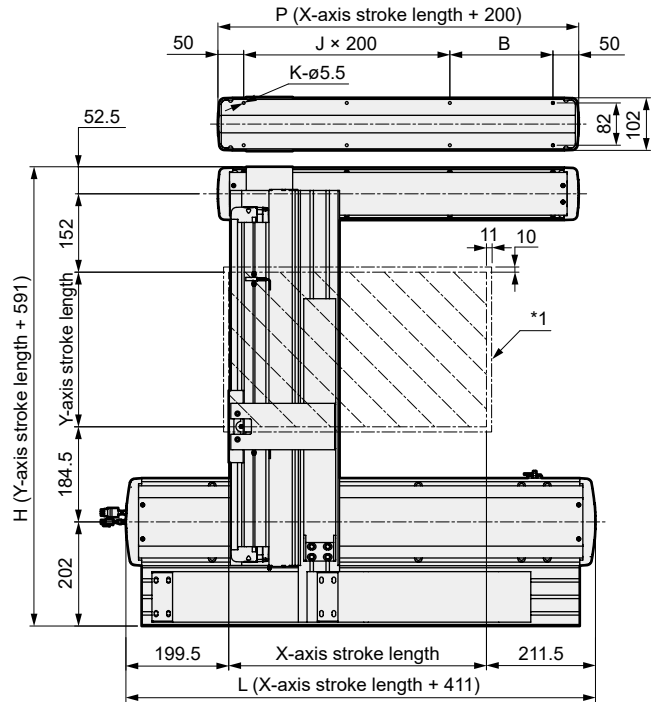
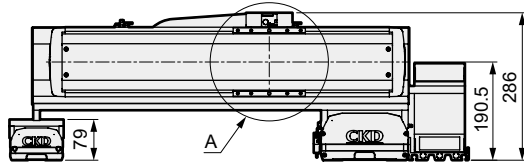
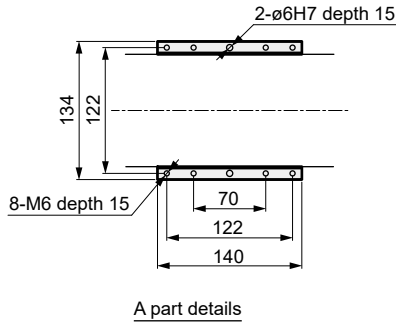
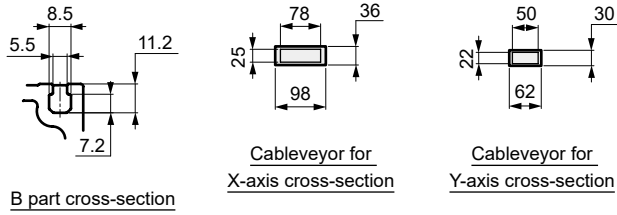
Cableveyor, axis combination bracket

Discontinued some variations

ETS Multi-Axis Series

Dimensions

● ETS-760G2



*This figure shows the dimensions when combined.

*1: Stops within the moving range and this range when returning to origin.

X-axis stroke (mm)	100	150	200	250	300	350	400	450	500	550	600	650	700	750	800	850	900	950	1000	1050	1100	1150	1200	1250
L	511	561	611	661	711	761	811	861	911	961	1011	1061	1111	1161	1211	1261	1311	1361	1411	1461	1511	1561	1611	1661
A	50	100	150	200	50	100	150	200	50	100	150	200	50	100	150	200	50	100	150	200	50	100	150	200
M	1	1	1	1	2	2	2	2	3	3	3	3	4	4	4	5	5	5	5	5	6	6	6	6
N	6	6	6	6	8	8	8	8	10	10	10	10	12	12	12	14	14	14	14	14	16	16	16	16
P	250	300	350	400	450	500	550	600	650	700	750	800	850	900	950	1000	1050	1100	1150	1200	1250	1300	1350	1400
Max. working speed (mm/s)	1000																		900	800	700	600		

X-axis support guide stroke (mm)	100	150	200	250	300	350	400	450	500	550	600	650	700	750	800	850	900	950	1000	1050	1100	1150	1200	1250
P	300	350	400	450	500	550	600	650	700	750	800	850	900	950	1000	1050	1100	1150	1200	1250	1300	1350	1400	1450
B	200	50	100	150	200	50	100	150	200	50	100	150	200	50	100	150	200	50	100	150	200	50	100	150
J	0	1	1	1	1	2	2	2	2	3	3	3	3	4	4	4	4	5	5	5	5	6	6	6
K	4	6	6	6	6	8	8	8	8	10	10	10	10	12	12	12	12	14	14	14	14	16	16	16

Y-axis stroke (mm)	200	250	300	350	400	450	500	550	600	650	700	750	800	850
H	791	841	891	941	991	1041	1091	1141	1191	1241	1291	1341	1391	1441
Max. working speed (mm/s)	1000													
Max. load capacity (kg)	35											32	30	

List of attachments

[Motor mounting parts]

Model No.	Mounted motor specifications	Motor mounting direction	Mounting parts	Shipment method	Motor capacity	Motor mounting bolt	
ETS-17	M	B	Coupling	Assembled at shipment	400 W	M5	4
	Y					M5	4
ETS-14	P				200 W	M4	4

*When "O" is selected for Mounted motor specification, the motor specification code for the 1st and 2nd axes is "M" or "P".

[Origin sensor/Limit sensor]

Manufacturer	Model	Quantity
OMRON Corporation	EE-SX672	6

*Refer to page 156 for sensor specifications.

[Other attachments for axis combinations]

Cableveyor, axis combination bracket

Discontinued some variations

ETS Multi-Axis Series

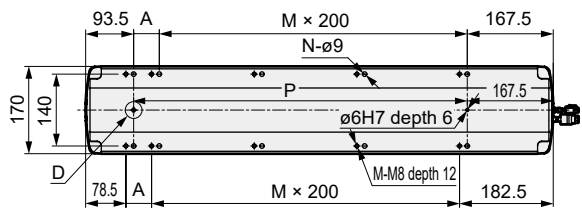
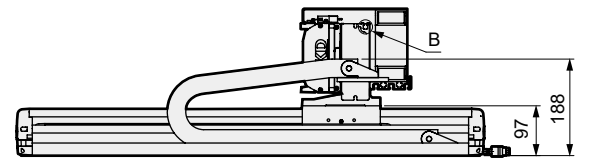
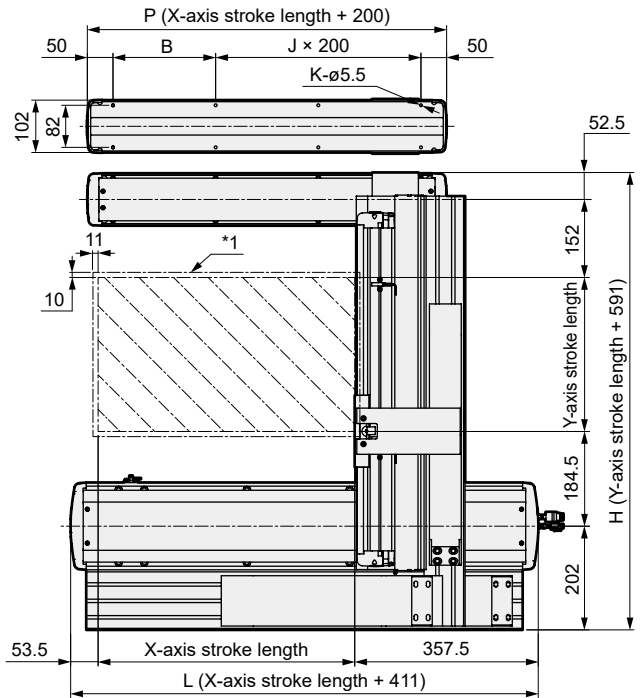
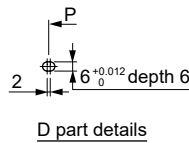
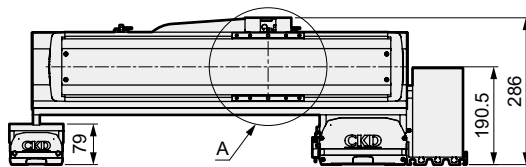
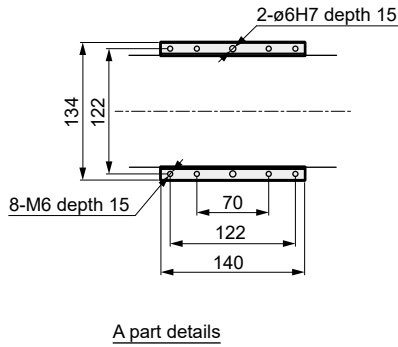
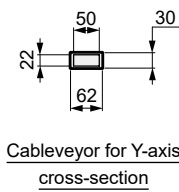
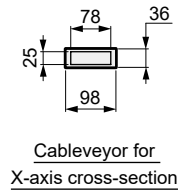
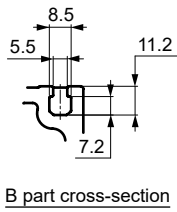
Dimensions (X-Y axes) With support guide

EBS
EBR
ETS
ETS Multi-Axis
ECS
ETV
ECV
EKS
EBS
EBR
ETS
ECS

Stepper motor compatible
Safety precautions

Dimensions

● ETS-760G3



*This figure shows the dimensions when combined.

*1: Stops within the moving range and this range when returning to origin.

X-axis stroke (mm)	100	150	200	250	300	350	400	450	500	550	600	650	700	750	800	850	900	950	1000	1050	1100	1150	1200	1250
L	511	561	611	661	711	761	811	861	911	961	1011	1061	1111	1161	1211	1261	1311	1361	1411	1461	1511	1561	1611	1661
A	50	100	150	200	50	100	150	200	50	100	150	200	50	100	150	200	50	100	150	200	50	100	150	200
M	1	1	1	1	2	2	2	2	3	3	3	3	4	4	4	4	5	5	5	5	6	6	6	6
N	6	6	6	6	8	8	8	8	10	10	10	10	12	12	12	12	14	14	14	14	16	16	16	16
P	250	300	350	400	450	500	550	600	650	700	750	800	850	900	950	1000	1050	1100	1150	1200	1250	1300	1350	1400
Max. working speed (mm/s)	1000																	900	800	700	600			

X-axis support guide stroke (mm)	100	150	200	250	300	350	400	450	500	550	600	650	700	750	800	850	900	950	1000	1050	1100	1150	1200	1250
P	300	350	400	450	500	550	600	650	700	750	800	850	900	950	1000	1050	1100	1150	1200	1250	1300	1350	1400	1450
B	200	50	100	150	200	50	100	150	200	50	100	150	200	50	100	150	200	50	100	150	200	50	100	150
J	0	1	1	1	1	2	2	2	2	3	3	3	3	4	4	4	4	5	5	5	5	6	6	6
K	4	6	6	6	6	8	8	8	8	10	10	10	10	12	12	12	12	14	14	14	14	16	16	16

Y-axis stroke (mm)	200	250	300	350	400	450	500	550	600	650	700	750	800	850
H	791	841	891	941	991	1041	1091	1141	1191	1241	1291	1341	1391	1441
Max. working speed (mm/s)	1000													
Max. load capacity (kg)	35						32			30				

List of attachments

[Motor mounting parts]

Model No.	Mounted motor specifications	Motor mounting direction	Mounting parts	Shipment method	Motor capacity	Motor mounting bolt
ETS-17	M	B	Coupling	Assembled at shipment	400 W	M5 4
	Y					M5 4
ETS-14	P				M4 4	

*When "O" is selected for Mounted motor specification, the motor specification code for the 1st and 2nd axes is "M" or "P".

[Origin sensor/Limit sensor]

Manufacturer	Model	Quantity
OMRON Corporation	EE-SX672	6

*Refer to page 156 for sensor specifications.

[Other attachments for axis combinations]

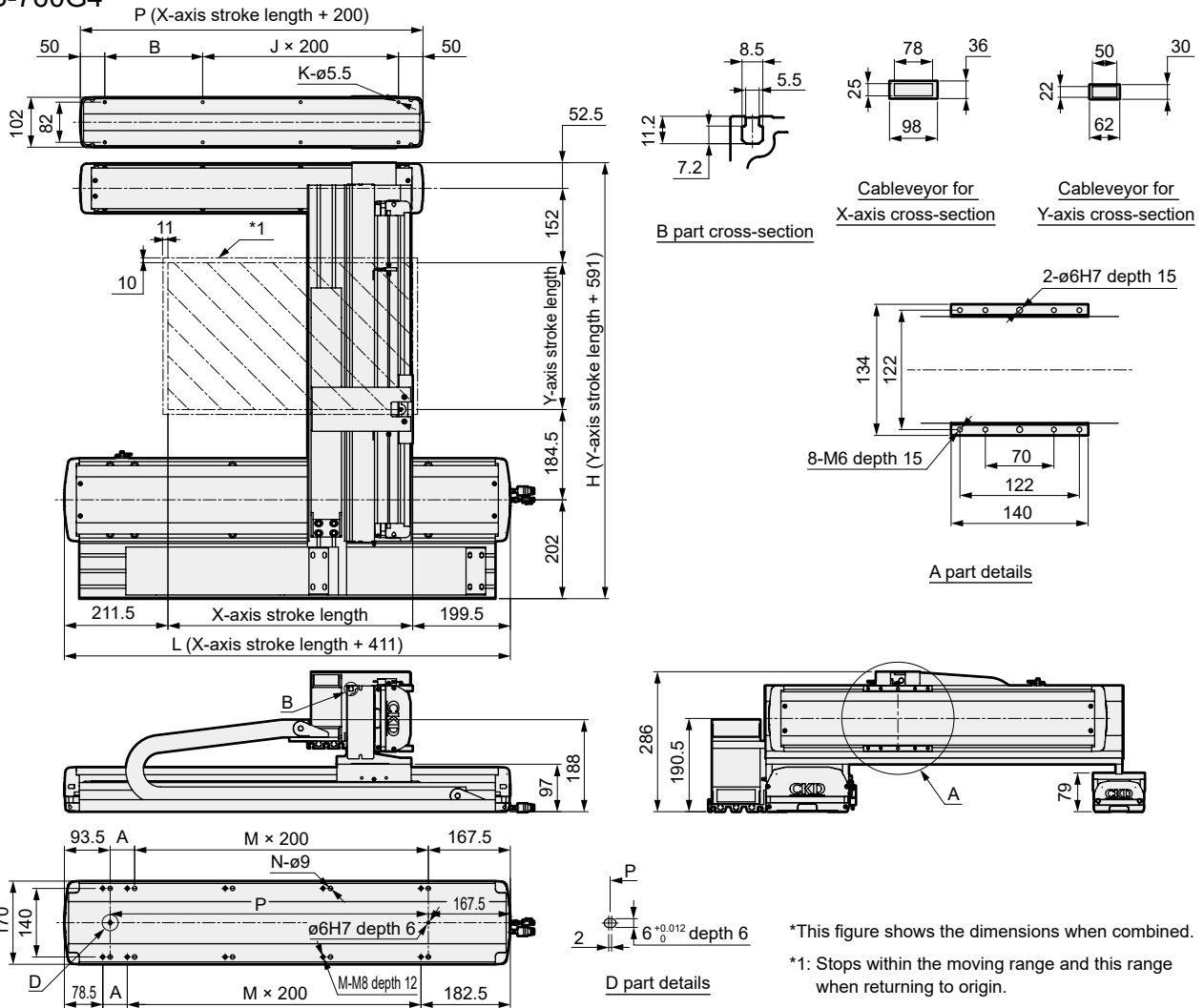
Cableveyor, axis combination bracket

Discontinued some variations

ETS Multi-Axis Series

Dimensions

● ETS-760G4



*This figure shows the dimensions when combined.
*1: Stops within the moving range and this range when returning to origin.

X-axis stroke (mm)	100	150	200	250	300	350	400	450	500	550	600	650	700	750	800	850	900	950	1000	1050	1100	1150	1200	1250
L	511	561	611	661	711	761	811	861	911	961	1011	1061	1111	1161	1211	1261	1311	1361	1411	1461	1511	1561	1611	1661
A	50	100	150	200	50	100	150	200	50	100	150	200	50	100	150	200	50	100	150	200	50	100	150	200
M	1	1	1	1	2	2	2	2	3	3	3	3	4	4	4	4	5	5	5	5	6	6	6	6
N	6	6	6	6	8	8	8	8	10	10	10	10	12	12	12	12	14	14	14	14	16	16	16	16
P	250	300	350	400	450	500	550	600	650	700	750	800	850	900	950	1000	1050	1100	1150	1200	1250	1300	1350	1400
Max. working speed (mm/s)	1000																	900	800	700	600			

X-axis support guide stroke (mm)	100	150	200	250	300	350	400	450	500	550	600	650	700	750	800	850	900	950	1000	1050	1100	1150	1200	1250
P	300	350	400	450	500	550	600	650	700	750	800	850	900	950	1000	1050	1100	1150	1200	1250	1300	1350	1400	1450
B	200	50	100	150	200	50	100	150	200	50	100	150	200	50	100	150	200	50	100	150	200	50	100	150
J	0	1	1	1	1	2	2	2	2	3	3	3	3	4	4	4	4	5	5	5	5	6	6	6
K	4	6	6	6	6	8	8	8	8	10	10	10	10	12	12	12	12	14	14	14	14	16	16	16

Y-axis stroke (mm)	200	250	300	350	400	450	500	550	600	650	700	750	800	850
H	791	841	891	941	991	1041	1091	1141	1191	1241	1291	1341	1391	1441
Max. working speed (mm/s)	1000													
Max. load capacity (kg)	35						32			30				

List of attachments

[Motor mounting parts]

Model No.	Mounted motor specifications	Motor mounting direction	Mounting parts	Shipment method	Motor capacity	Motor mounting bolt	
ETS-17	M	B	Coupling	Assembled at shipment	400 W	M5	4
	Y					M5	4
ETS-14	P				M4	4	

*When "O" is selected for Mounted motor specification, the motor specification code for the 1st and 2nd axes is "M" or "P".

[Origin sensor/Limit sensor]

Manufacturer	Model	Quantity
OMRON Corporation	EE-SX672	6

*Refer to page 156 for sensor specifications.

[Other attachments for axis combinations]

Cableveyor, axis combination bracket

Discontinued some variations

ETS Multi-Axis Series

Dimensions (X-Y axes) With support guide

MEMO

EBS	Servo motor compatible
EBR	
ETS	
ETS Multi-Axis	
ECS	
ETV	
ECV	
EKS	
EBS	Stepper motor compatible
EBR	
ETS	
ECS	

Safety precautions

Discontinued some variations

Electric actuator Ball screw drive Slider

ETS Multi-Axis Series



- Servo motor capacity: 750 W/400 W
- 2-axis combination X-Y axes/with support guide (G type)



How to order

ETS - 870 G 1 - 040 030 - M N W

A Combined axes	D 1st axis stroke	G Brake *1
870 ETS-22 × ETS-17	010 100 mm to to (50 mm pitch) 150 1500 mm	N None
B Combination	E 2nd axis stroke	H Origin/Limit sensor (3 pcs × 2 axes) *2
G X-Y axes with support guide	020 200 mm to to (50 mm pitch) 105 1050 mm	N None W Yes
C Combination direction	F Mounted motor specification *3	
1 to 4 Confirm the table below.	M Y P O	Select the mounted motor specification from the table below.

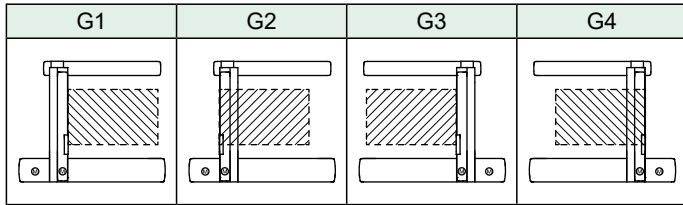
- *1: The brake targets the 2nd axis.
 *2: The user can adjust the sensor position. (Included at shipment)
 *3: When "O" is selected for Mounted motor specification, the motor specification code for the 1st and 2nd axes is "M" or "P".

F Mounted motor specification

Manufacturer	400 W	750 W
Mitsubishi Electric Corporation	M	M
Delta Electronics Co., Ltd.	M	M
Sanyo Denki Co., Ltd.	M	-
YASKAWA Electric Corporation	Y	Y
Keyence Corporation	Y	Y
Panasonic Corporation	P	P
OMRON Corporation	O	O

*Refer to page 164 for the recommended motor model No.

C Combination direction



C Combination direction and motor mounting direction

Combined axes	Combination	Combination direction	Motor mounting direction and motor capacity			
			1st axis		2nd axis	
			Model	750 W	Model	400 W
ETS-870	G	1	ETS-22	B	ETS-17	B
		2		B		B
		3		B		B
		4		B		B

*B: Built-in mount

D E stroke length

Combined axes	Combination	1st axis			2nd axis		
		Model	Screw lead (mm)	Stroke (mm)	Model	Screw lead (mm)	Stroke (mm)
ETS-870	G	ETS-22	25	100 to 1500	ETS-17	20	200 to 1050

Grease nipple

Combined axes	Combination	Combination direction	1st axis		2nd axis	
			Model	Grease nipple position	Model	Grease nipple position
ETS-870	G	1	ETS-22	L	ETS-17	R
		2		L		L
		3		R		L
		4		R		R

*R: Right side L: Left side

Discontinued some variations

ETS Multi-Axis Series

Dimensions (X-Y axes) With support guide

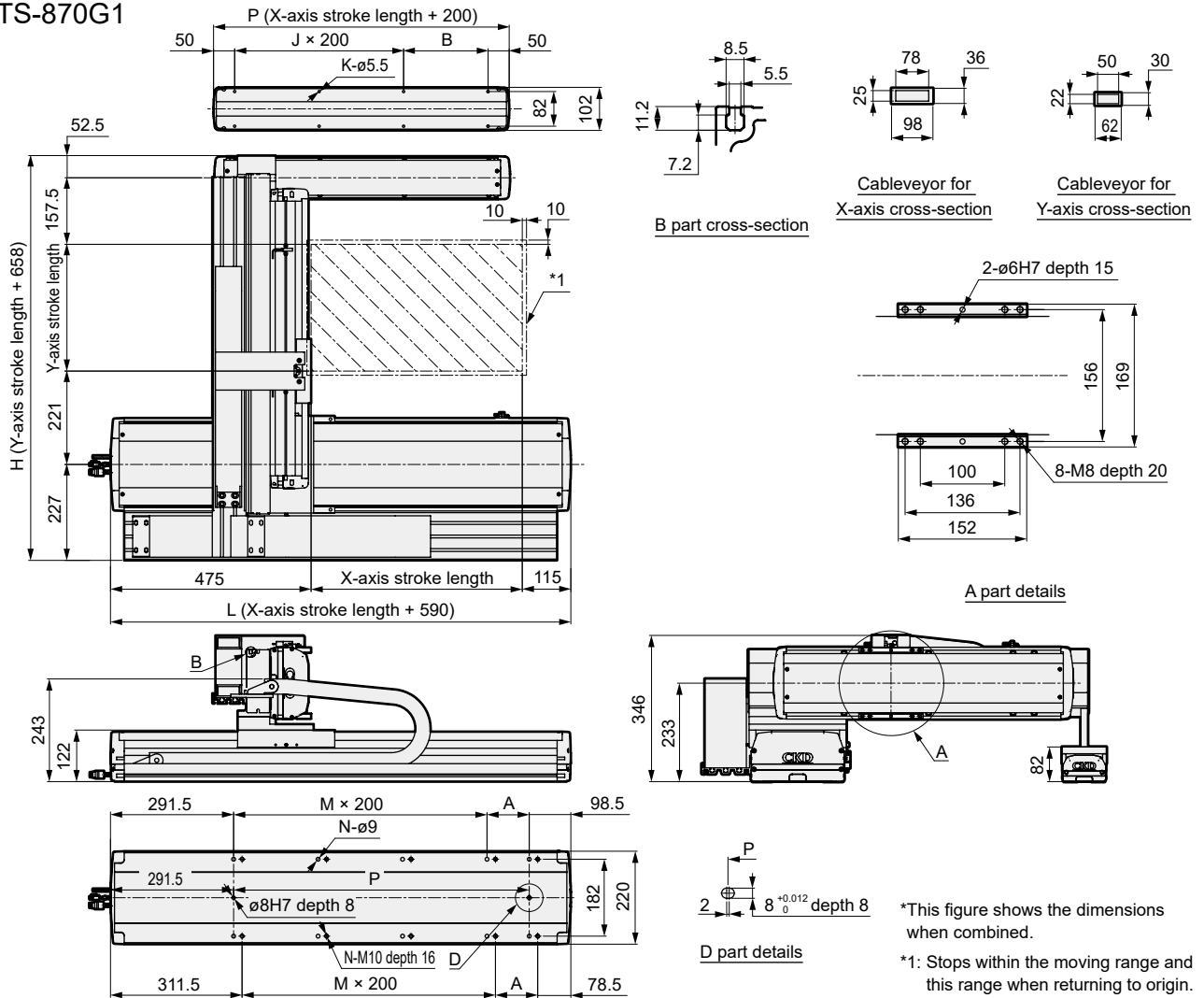
EBS
EBR
ETS
ETS Multi-Axis
ECS
ETV
ECV
EKS
EBS
EBR
ETS
ECS

Stepper motor compatible

Safety precautions

Dimensions

● ETS-870G1



X-axis stroke (mm)	100	150	200	250	300	350	400	450	500	550	600	650	700	750	800	850	900	950	1000	1050	1100	1150	1200	1250	1300	1350	1400	1450	1500	
L	690	740	790	840	890	940	990	1040	1090	1140	1190	1240	1290	1340	1390	1440	1490	1540	1590	1640	1690	1740	1790	1840	1890	1940	1990	2040	2090	
A	100	150	200	50	100	150	200	50	100	150	200	50	100	150	200	50	100	150	200	50	100	150	200	50	100	150	200	50	100	
M	1	1	1	2	2	2	2	3	3	3	3	4	4	4	5	5	5	5	6	6	6	6	7	7	7	7	8	8		
N	6	6	6	8	8	8	8	10	10	10	10	12	12	12	14	14	14	14	16	16	16	16	18	18	18	18	20	20		
P	300	350	400	450	500	550	600	650	700	750	800	850	900	950	1000	1050	1100	1150	1200	1250	1300	1350	1400	1450	1500	1550	1600	1650	1700	
Max. working speed (mm/s)	1250																		1125		1000		875		750		625		500	

X-axis support guide stroke (mm)	100	150	200	250	300	350	400	450	500	550	600	650	700	750	800	850	900	950	1000	1050	1100	1150	1200	1250	1300	1350	1400	1450	1500
L	300	350	400	450	500	550	600	650	700	750	800	850	900	950	1000	1050	1100	1150	1200	1250	1300	1350	1400	1450	1500	1550	1600	1650	1700
A	200	50	100	150	200	50	100	150	200	50	100	150	200	50	100	150	200	50	100	150	200	50	100	150	200	50	100	150	200
M	0	1	1	1	1	2	2	2	2	3	3	3	3	4	4	4	4	5	5	5	5	6	6	6	6	7	7	7	7
N	4	6	6	6	6	8	8	8	8	10	10	10	10	12	12	12	12	14	14	14	14	16	16	16	16	18	18	18	18

Y-axis stroke (mm)	200	250	300	350	400	450	500	550	600	650	700	750	800	850	900	950	1000	1050
H	858	908	958	1008	1058	1108	1158	1208	1258	1308	1358	1408	1458	1508	1558	1608	1658	1708
Max. working speed (mm/s)	1000												900		800			
Max. load capacity (kg)	50																	

List of attachments

[Motor mounting parts]

Model No.	Mounted motor specifications	Motor mounting direction	Mounting parts	Shipment method	Motor capacity	Motor mounting bolt	
ETS-22	M	B	Coupling	Assembled at shipment	750 W	M6/M5	4
	Y					M6/M5	4
ETS-17	P				M5/M4	4	

*When "O" is selected for Mounted motor specification, the motor specification code for the 1st and 2nd axes is "M" or "P".

[Origin sensor/Limit sensor]

Manufacturer	Model	Quantity
OMRON Corporation	EE-SX672	6

*Refer to page 156 for sensor specifications.

[Other attachments for axis combinations]

Cableveyor, axis combination bracket

Discontinued some variations

ETS Multi-Axis Series

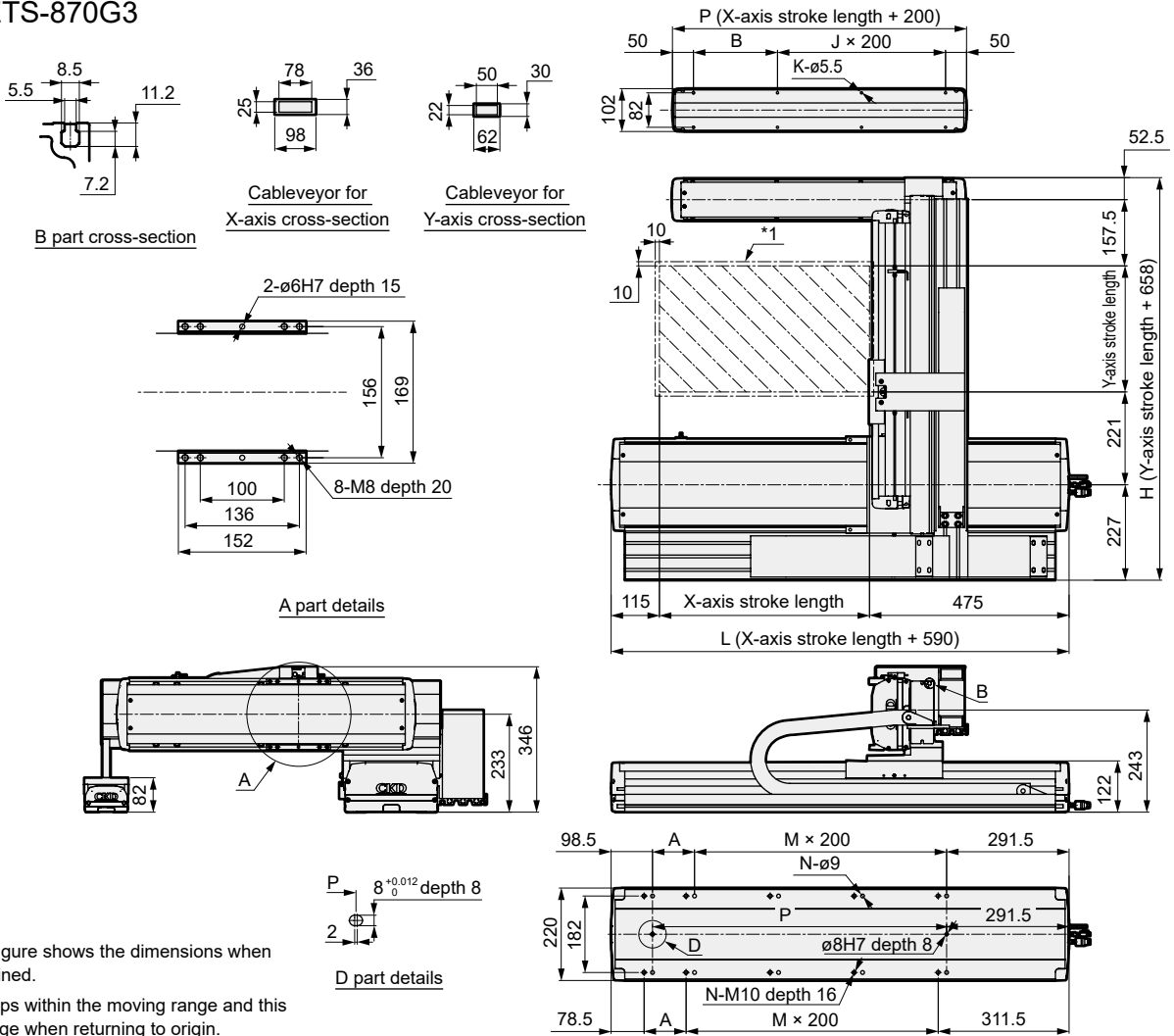
Dimensions (X-Y axes) With support guide

EBS
EBR
ETS
ETS Multi-Axis
ECS
ETV
ECV
EKS
EBS
EBR
ETS
ECS

Stepper motor compatible
Safety precautions

Dimensions

● ETS-870G3



*This figure shows the dimensions when combined.

*1: Stops within the moving range and this range when returning to origin.

X-axis stroke (mm)	100	150	200	250	300	350	400	450	500	550	600	650	700	750	800	850	900	950	1000	1050	1100	1150	1200	1250	1300	1350	1400	1450	1500	
L	690	740	790	840	890	940	990	1040	1090	1140	1190	1240	1290	1340	1390	1440	1490	1540	1590	1640	1690	1740	1790	1840	1890	1940	1990	2040	2090	
A	100	150	200	50	100	150	200	50	100	150	200	50	100	150	200	50	100	150	200	50	100	150	200	50	100	150	200	50	100	
M	1	1	1	2	2	2	2	3	3	3	3	4	4	4	5	5	5	5	6	6	6	6	7	7	7	7	8	8	8	
N	6	6	6	8	8	8	8	10	10	10	10	12	12	12	14	14	14	14	16	16	16	16	18	18	18	18	20	20	20	
P	300	350	400	450	500	550	600	650	700	750	800	850	900	950	1000	1050	1100	1150	1200	1250	1300	1350	1400	1450	1500	1550	1600	1650	1700	
Max. working speed (mm/s)	1250																		1125		1000		875		750		625		500	

X-axis support guide stroke (mm)	100	150	200	250	300	350	400	450	500	550	600	650	700	750	800	850	900	950	1000	1050	1100	1150	1200	1250	1300	1350	1400	1450	1500
L	300	350	400	450	500	550	600	650	700	750	800	850	900	950	1000	1050	1100	1150	1200	1250	1300	1350	1400	1450	1500	1550	1600	1650	1700
A	200	50	100	150	200	50	100	150	200	50	100	150	200	50	100	150	200	50	100	150	200	50	100	150	200	50	100	150	200
M	0	1	1	1	1	2	2	2	2	3	3	3	3	4	4	4	4	5	5	5	5	6	6	6	6	7	7	7	7
N	4	6	6	6	6	8	8	8	8	10	10	10	10	12	12	12	12	14	14	14	14	16	16	16	16	18	18	18	18

Y-axis stroke (mm)	200	250	300	350	400	450	500	550	600	650	700	750	800	850	900	950	1000	1050
H	858	908	958	1008	1058	1108	1158	1208	1258	1308	1358	1408	1458	1508	1558	1608	1658	1708
Max. working speed (mm/s)	1000														900		800	
Max. load capacity (kg)	50																	

List of attachments

[Motor mounting parts]

Model No.	Mounted motor specifications	Motor mounting direction	Mounting parts	Shipment method	Motor capacity	Motor mounting bolt	
ETS-22	M	B	Coupling	Assembled at shipment	750 W	M6/M5	4
	Y					M6/M5	4
ETS-17	P				400 W	M5/M4	4

*When "O" is selected for Mounted motor specification, the motor specification code for the 1st and 2nd axes is "M" or "P".

[Origin sensor/Limit sensor]

Manufacturer	Model	Quantity
OMRON Corporation	EE-SX672	6

*Refer to page 156 for sensor specifications.

[Other attachments for axis combinations]

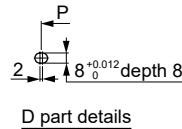
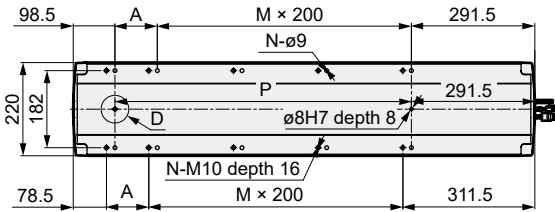
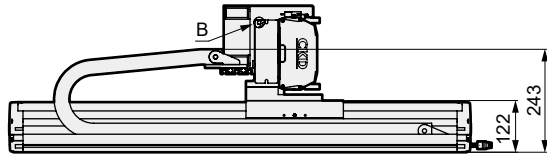
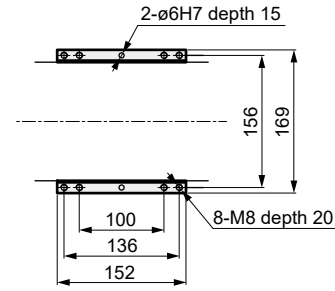
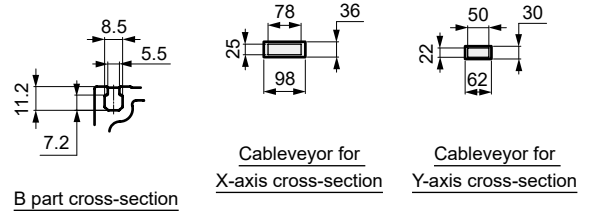
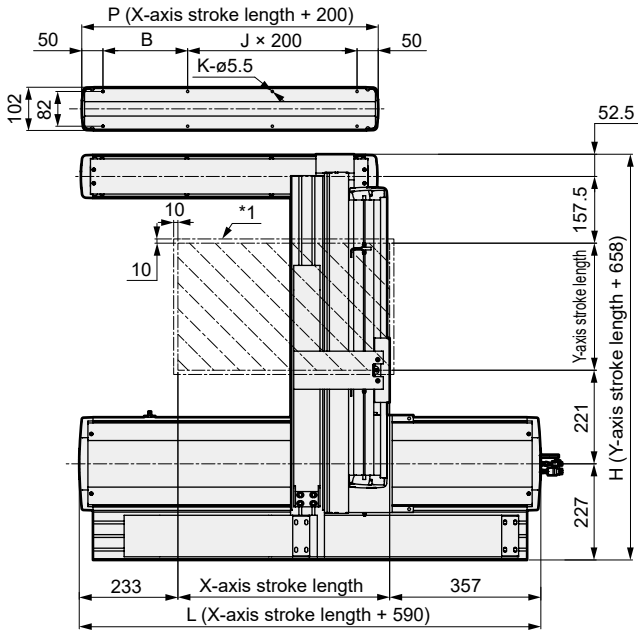
Cableveyor, axis combination bracket

Discontinued some variations

ETS Multi-Axis Series

Dimensions

● ETS-870G4



*This figure shows the dimensions when combined.

*1: Stops within the moving range and this range when returning to origin.

X-axis stroke (mm)	100	150	200	250	300	350	400	450	500	550	600	650	700	750	800	850	900	950	1000	1050	1100	1150	1200	1250	1300	1350	1400	1450	1500
L	690	740	790	840	890	940	990	1040	1090	1140	1190	1240	1290	1340	1390	1440	1490	1540	1590	1640	1690	1740	1790	1840	1890	1940	1990	2040	2090
A	100	150	200	50	100	150	200	50	100	150	200	50	100	150	200	50	100	150	200	50	100	150	200	50	100	150	200	50	100
M	1	1	1	2	2	2	2	3	3	3	3	4	4	4	4	5	5	5	5	6	6	6	6	7	7	7	7	8	8
N	6	6	6	8	8	8	8	10	10	10	10	12	12	12	12	14	14	14	14	16	16	16	16	18	18	18	18	20	20
P	300	350	400	450	500	550	600	650	700	750	800	850	900	950	1000	1050	1100	1150	1200	1250	1300	1350	1400	1450	1500	1550	1600	1650	1700
Max. working speed (mm/s)	1250																1125		1000		875		750		625		500		

X-axis support guide stroke (mm)	100	150	200	250	300	350	400	450	500	550	600	650	700	750	800	850	900	950	1000	1050	1100	1150	1200	1250	1300	1350	1400	1450	1500
L	300	350	400	450	500	550	600	650	700	750	800	850	900	950	1000	1050	1100	1150	1200	1250	1300	1350	1400	1450	1500	1550	1600	1650	1700
A	200	50	100	150	200	50	100	150	200	50	100	150	200	50	100	150	200	50	100	150	200	50	100	150	200	50	100	150	200
M	0	1	1	1	1	2	2	2	2	3	3	3	3	4	4	4	4	5	5	5	5	6	6	6	6	7	7	7	7
N	4	6	6	6	6	8	8	8	8	10	10	10	10	12	12	12	12	14	14	14	14	16	16	16	16	18	18	18	18

Y-axis stroke (mm)	200	250	300	350	400	450	500	550	600	650	700	750	800	850	900	950	1000	1050
H	858	908	958	1008	1058	1108	1158	1208	1258	1308	1358	1408	1458	1508	1558	1608	1658	1708
Max. working speed (mm/s)	1000												900		800			
Max. load capacity (kg)	50																	

List of attachments

[Motor mounting parts]

Model No.	Mounted motor specifications	Motor mounting direction	Mounting parts	Shipment method	Motor capacity	Motor mounting bolt	
ETS-22	M	B	Coupling	Assembled at shipment	750 W	M6/M5	4
ETS-17	Y					M6/M5	4
	P				M5/M4	4	

*When "O" is selected for Mounted motor specification, the motor specification code for the 1st and 2nd axes is "M" or "P".

[Origin sensor/Limit sensor]

Manufacturer	Model	Quantity
OMRON Corporation	EE-SX672	6

*Refer to page 156 for sensor specifications.

[Other attachments for axis combinations]

Cableveyor, axis combination bracket

Discontinued some variations

ETS Multi-Axis Series

Dimensions (X-Y axes) With support guide

MEMO

EBS	Servo motor compatible
EBR	
ETS	
ETS Multi-Axis	
ECS	
ETV	
ECV	
EKS	
EBS	Stepper motor compatible
EBR	
ETS	
ECS	

Safety precautions

Discontinued some variations

Electric actuator Ball screw drive Slider

ETS Multi-Axis Series

Combination parts: Support guide

How to order

ETS - 760 G - SUPG 00 - X 030

A With X-Y support guide (gantry type)

A Combined axes	
760	ETS-17 × ETS-14
870	ETS-22 × ETS-17

B Stroke

010 to 150	100 mm (In 50 mm increments)
	1500 mm

*1: Select the support guide stroke length from the 1st axis stroke range of the combined axes. (See the various size specifications pages for the axis stroke ranges.)

Support guide bracket

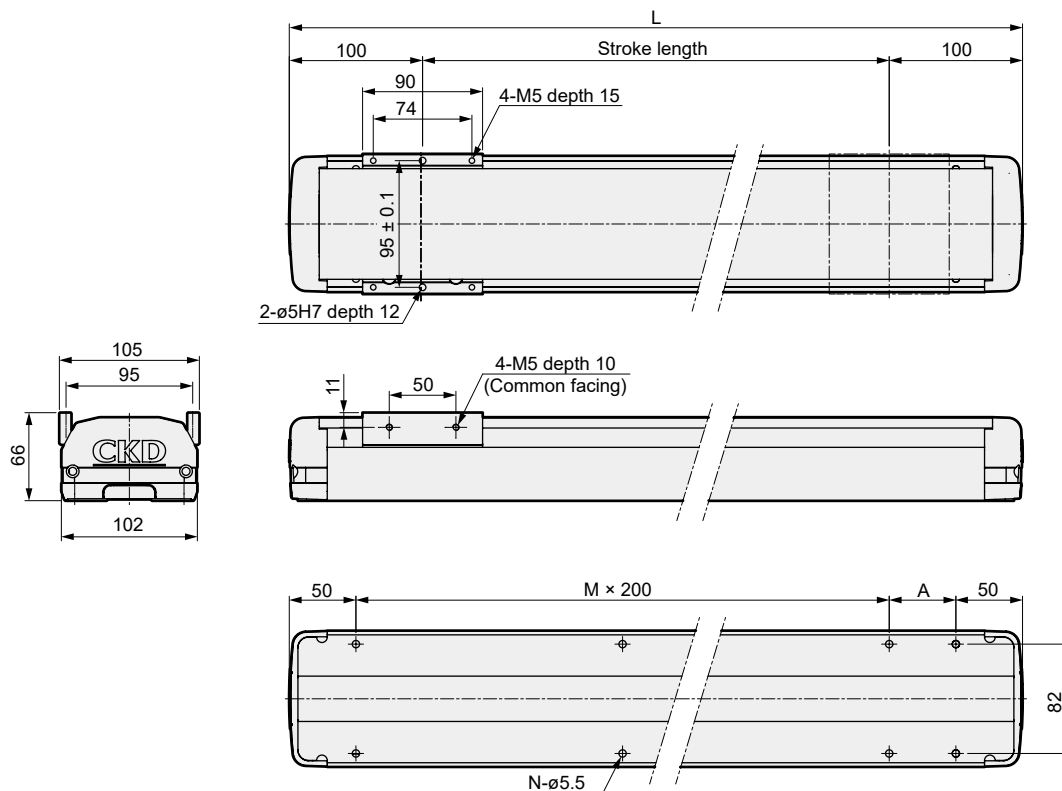
ETS - 760 G - SBKT 00 - X 000

A Combined axes

760	ETS-17 × ETS-14
870	ETS-22 × ETS-17

Support guide dimensions

● ETS-760G-SUPG00-X***



Stroke (mm)	100	150	200	250	300	350	400	450	500	550	600	650	700	750	800	850	900	950	1000	1050	1100	1150	1200	1250
L	300	350	400	450	500	550	600	650	700	750	800	850	900	950	1000	1050	1100	1150	1200	1250	1300	1350	1400	1450
A	200	50	100	150	200	50	100	150	200	50	100	150	200	50	100	150	200	50	100	150	200	50	100	150
M	0	1	1	1	1	2	2	2	2	3	3	3	3	4	4	4	4	5	5	5	5	6	6	6
N	4	6	6	6	6	8	8	8	8	10	10	10	10	12	12	12	12	14	14	14	14	16	16	16

Discontinued some variations

ETS Multi-Axis Series

Combination parts: Support guide

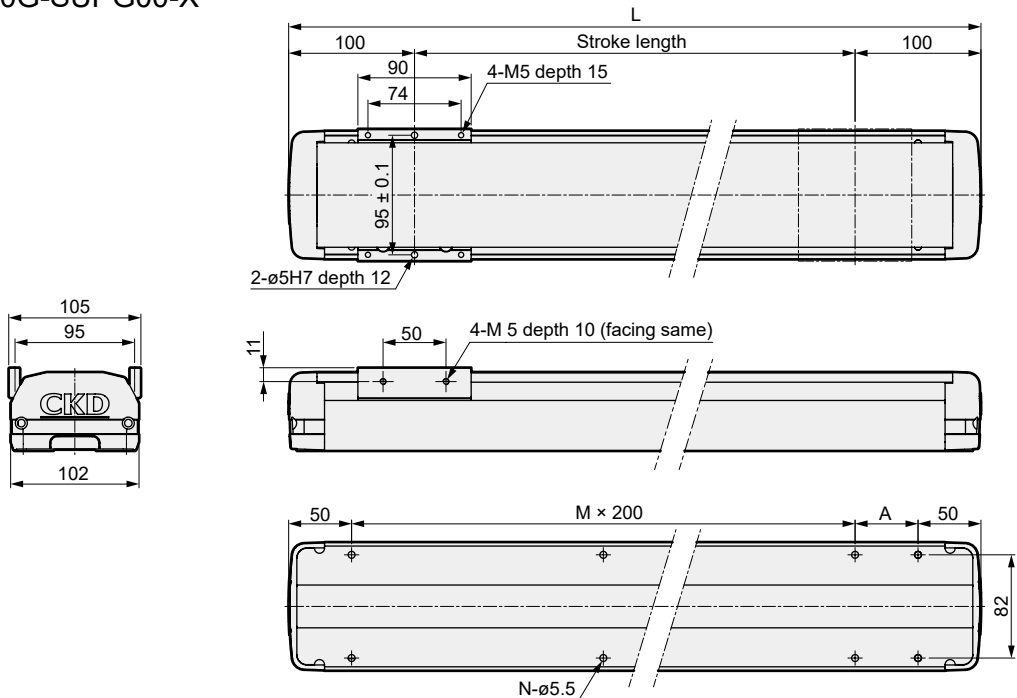
EBS
EBR
ETS
ETS Multi-Axis
ECS
ETV
ECV
EKS

Stepper motor compatible

Safety precautions

Support guide dimensions

● ETS-870G-SUPG00-X***

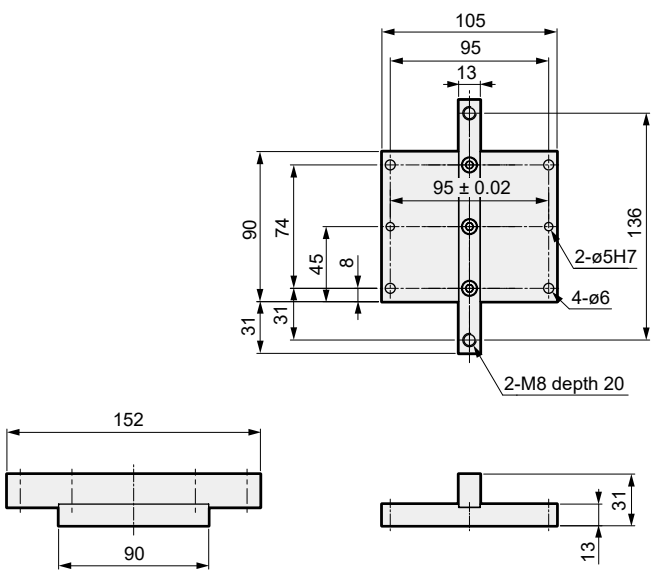


Stroke (mm)	100	150	200	250	300	350	400	450	500	550	600	650	700	750	800	850	900	950	1000
L	300	350	400	450	500	550	600	650	700	750	800	850	900	950	1000	1050	1100	1150	1200
A	200	50	100	150	200	50	100	150	200	50	100	150	200	50	100	150	200	50	100
M	0	1	1	1	1	2	2	2	2	3	3	3	3	4	4	4	4	5	5
N	4	6	6	6	6	8	8	8	8	10	10	10	10	12	12	12	12	14	14

Stroke (mm)	1050	1100	1150	1200	1250	1300	1350	1400	1450	1500
L	1250	1300	1350	1400	1450	1500	1550	1600	1650	1700
A	150	200	50	100	150	200	50	100	150	200
M	5	5	6	6	6	6	7	7	7	7
N	14	14	16	16	16	16	18	18	18	18

Support guide bracket dimensions

● ETS-760G-SBKT00-X000



● ETS-870G-SBKT00-X000

