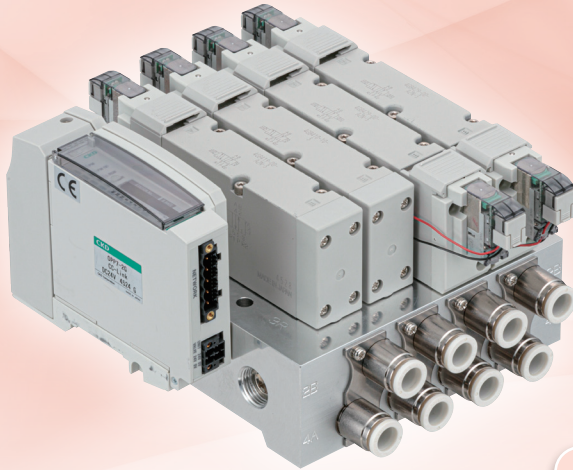
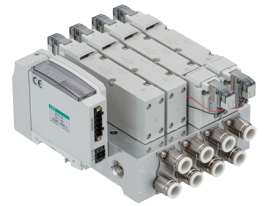


Pilot operated 5-port valve (M)4G^A_B4R Series



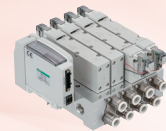
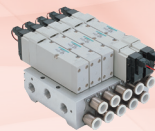
Features

The power-saving coil of the 4G1, 2, and 3R Series is mounted on the 4G4 and renewed as the 4G4R. Large cylinders up to $\phi 140$ can be driven with a low power of 0.1 W.

Large flow rate / Energy saving / Continuous energization

Conventional
4G4

Renewed product
4G4R



100 VAC

1.8 W

0.98 W

24 VDC

1 W

**0.4 W (Standard)
0.1 W (Option)**

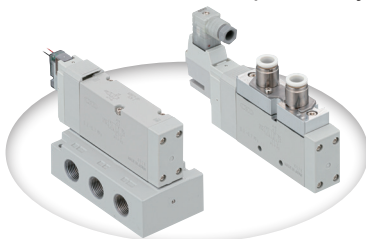
*Continuous energization is possible with the low exoergic/energy saving circuit.

A diverse lineup (Discrete / Manifold / Reduced wiring)

Single valve / Body piping / Base piping

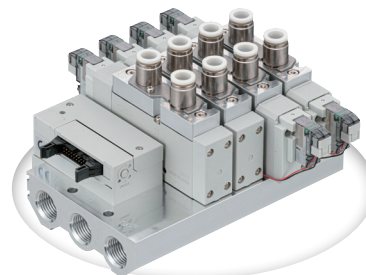
4G^A_B4 Series

Max. C value of 15 with a compact body



Reduced wiring manifolds

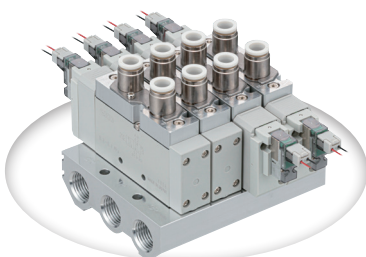
M4G^A_B4-T* Series



Common terminal block
D-sub-connector
Flat cable connector

M4G^A_B4 Series

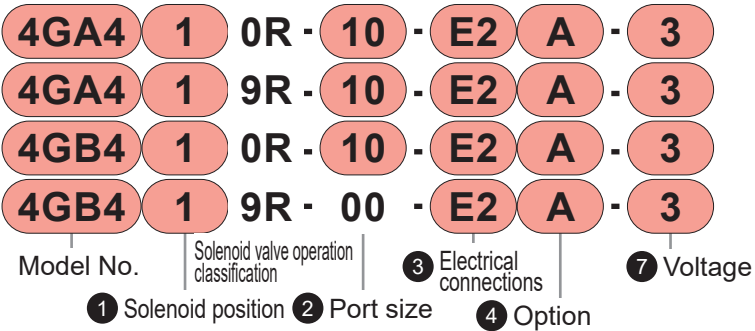
Manifold max. C value of 9.5



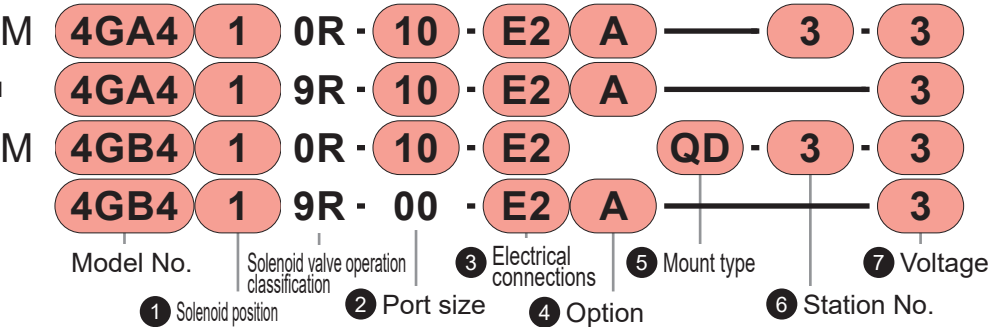
Serial transmission
CC-Link
EtherCAT
EtherNet/IP
DeviceNet
CC-Link IE Field Basic
CC-Link IE Field
CC-Link IE TSN
PROFINET
IO-Link

How to order

- Pilot operated 5-port valve
- 5-port valve for integrated base
- Pilot operated 5-port valve
- 5-port valve for integrated base



- Manifold
- Single solenoid valve for manifold
- Manifold 5-port valve
- 5-port valve for discrete base mounting



Equipped model No.

Only the items newly added (option, voltage) and changed (electrical connection shape) are shown in this catalog. For details on the 4GA4, 4GB4, M4GA4, M4GB4 Series (specifications, model Nos.), refer to the CKD Components Product Website (<https://www.ckd.co.jp/en/>).



3 Electrical connections

Type	Lead wire (mm)	Surge suppressor	Lamp	Code	
Grommet lead wire	300			Blank	*1
DIN terminal box (Pg7)		●	●	B	*2 *3
		●		BN	*2 *3
E-connector (Lead wire upward/lateral common)	300			E0	
	500			E00	
	1000			E01	
	2000			E02	
	3000			E03	
	300	●	●	E2	
	500	●	●	E20	
	1000	●	●	E21	
	2000	●	●	E22	
	3000	●	●	E23	
EJ-connector (Socket with cover, upward/lateral common)				E0N	Socket None
		●	●	E2N	
				E1	Socket with terminal
		●	●	E3	
				E01J	
EJ-connector (Socket with cover, upward/lateral common)	1000			E01J	
	2000			E02J	
	3000			E03J	
	1000	●	●	E21J	
	2000	●	●	E22J	
	3000	●	●	E23J	

- *1: The grommet lead wire specifications are compatible with DC voltage only.
- *2: A lamp comes with the terminal box.
- *3: The terminal box conforms to EN175301-8037TypeC (former DIN43650-C). See CKD Components Product Website (<https://www.ckd.co.jp/kiki/jp/en/>) → "Model No. → [Instruction manual] for details.

4 Option

Code	Description
Blank	No option
A	Coolant proof
S	Surgeless
E	Low exoergic/energy saving circuit
F	Port A/B filter built in

- *1: E2*, E2*J electrical connections, 7 Only the voltage "3" 24 VDC and "4" 12 VDC are supported. In addition, surgeless "S" and low exoergic/energy saving circuit "E" cannot be selected together.
- *2: Surgeless specifications.

7 Voltage

Code	Description
1	100 VAC
2	200 VAC
3	24 VDC
4	12 VDC
5	110 VAC

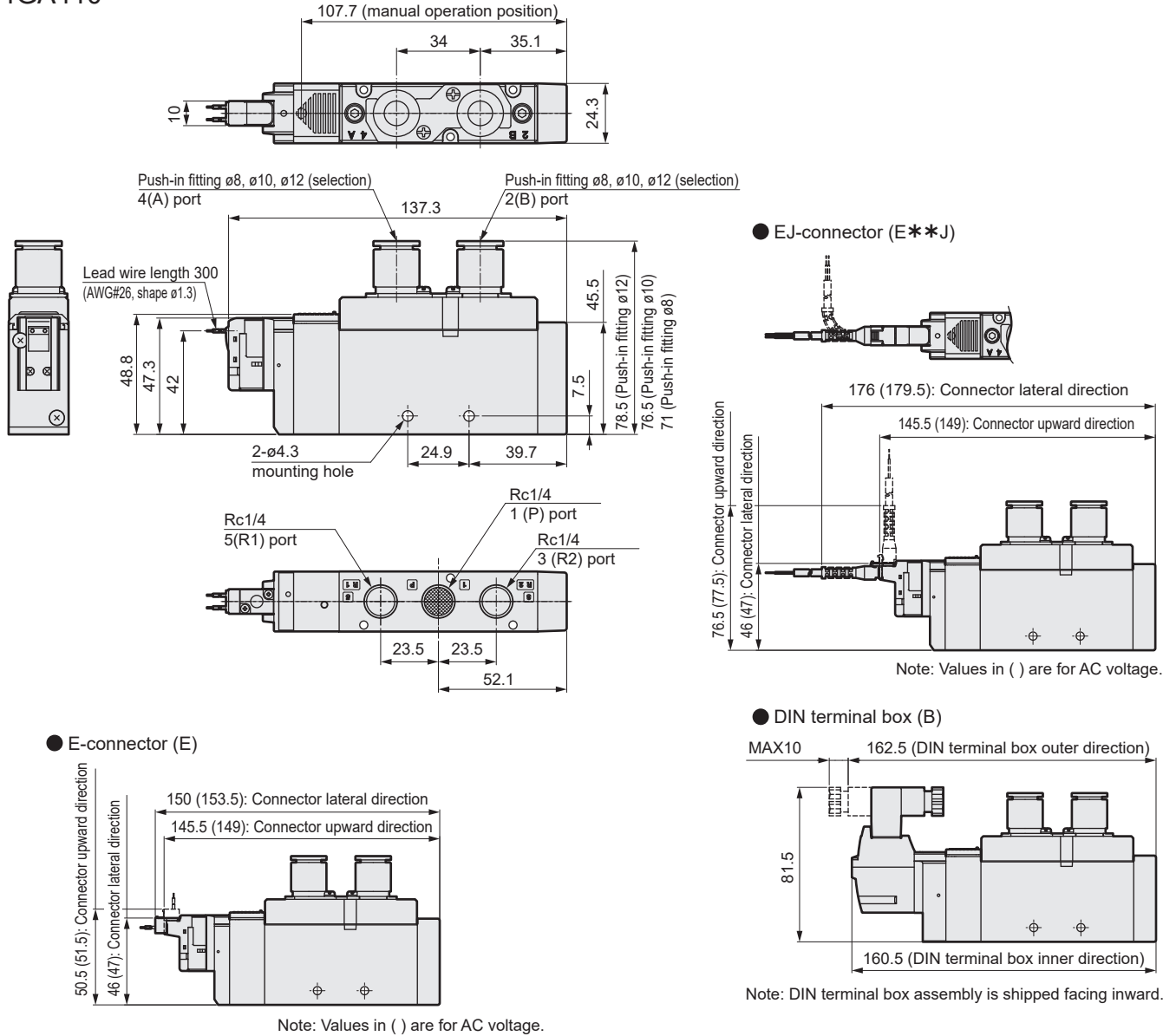
Common specifications

Item Division	Description
Valve and operation	Pilot operated soft spool valve
Working fluid	Compressed air
Max. working pressureMPa	0.7
Min. working pressureMPa	0.2
Proof pressure MPa	1.05
Ambient temperature°C	-5 to 55 (no freezing)
Fluid temperature °C	5 to 55
Manual override	Non-locking/locking common
Lubrication (*1)	Not required
Degree of protection (*2)	Dust-proof [IP40 equivalent (DIN terminal box: IP65)]
Vibration resistancecm/s ²	50 or less
Shock resistancecm/s ²	300 or less
Atmosphere	Cannot be used in corrosive gas environments

- *1: Use turbine oil Class 1 ISOVG32 for lubrication. Excessive or intermittent lubrication results in unstable operation.
- *2: Avoid water drops or oil, etc., during use. IP65 (water jet proof) or equivalent applies for DIN terminal box specifications. However, the specified outer diameter of the cord and tightening torque must be used for fixing in place.

Dimensions

4GA410



Electrical specifications

Item Division	Description
Rated voltage V	24 DC 12 DC 5 DC 3 DC 100 VAC 110 VAC 200 VAC
Voltage fluctuation range	±10%
Holding current (A) (*3)	Standard 0.015 (0.017) 0.030 (0.034) 0.072 (0.082) 0.120 (0.136) 0.009 (0.009) 0.006 (0.006)
Power consumption W (*3)	Standard 0.35(0.40) 0.35(0.40) -
Apparent power VA (*3)	Standard - - 0.93 (0.98) 1.20 (1.40)
Thermal class	B
Surge suppressor	Option
Indicator	Lamp (option)

- *3: Values in () apply when lamp is included. In addition, the type with low exoergic/energy saving circuit is only available with lamp.

