

Electric actuator Belt ECV-05 Series

Motor side mounting (left, right, bottom)

● Servo motor capacity: 100 W

How to order

ECV - **05** - **40** **010** - **U** **M** **1** **X** **N** **N** **N** **N**

A Body size

05	Body width 50 mm
----	------------------

B Lead equivalent

40	40 mm
----	-------

C Stroke length

010	100 mm
to	(In 50 mm increments)
080	800 mm

E Mounted motor specification

M	Select the mounted motor specification from the table below.
Y	
P	
F	

F Motor capacity

1	100 W
---	-------

G Driving belt

X	Standard (rubber)
---	-------------------

D Motor mounting direction

U	Top mounting
D	Bottom mounting

H Origin sensor (1 pc) *1 *2

N	None
C	Outside motor side
D	Outside motor opposite side

K Positioning pin hole

N	None
P	Yes

I Grease nipple *3

N	None (Body mounting direction: Standard)
---	--

l Limit sensor (2 pcs) *1 *2

N	None
B	Outside

Manufacturer	100 W
Mitsubishi Electric Corporation	M
Delta Electronics Co., Ltd.	M
Sanyo Denki Co., Ltd.	M
YASKAWA Electric Corporation	Y
Keyence Corporation	Y
Panasonic Corporation	P
OMRON Corporation	M
Fuji Electric Co., Ltd.	M
FANUC CORPORATION	F
Bosch Rexroth AG	P
Rockwell Automation, Inc.	M
SIEMENS AG	M

*1: Origin sensor and limit sensor are available as a set. As it is both-or-nothing, select "None" for both.

*2: The user can adjust the sensor position. (Included at shipment)

*3: "Body mounting direction: Standard" here refers to mounting from the bottom side.

*Refer to page 403 for the motor model No.

Specifications

Applicable motor capacity	100 W servo motor
Drive method	Belt width 9 mm
Stroke length	mm 100 to 800
Lead equivalent	mm 40
Max. load capacity *1	Horizontal kg 3 Vertical kg -
Max. speed	mm/s 2000
Rated thrust *1	N 42
Repeatability	mm ±0.08
Lost motion	0.2 mm or less
Dynamic allowable load	N 551.1
Static allowable moment	N·m MP: 20, MY: 16, MR: 19
Dynamic allowable moment	N·m MP: 2.8, MY: 2.8, MR: 6.8
Operating ambient temperature, humidity	0 to 40°C (no freezing) 35 to 80% RH (no condensation)
Storage ambient temperature, humidity	-10 to 50°C (no freezing) 35 to 80% RH (no condensation)
Atmosphere	No corrosive gas, explosive gas, or dust

*1: Rated thrust and max. load capacity are guideline values assuming that the motor mounted will output the rated torque.

Stroke and max. speed

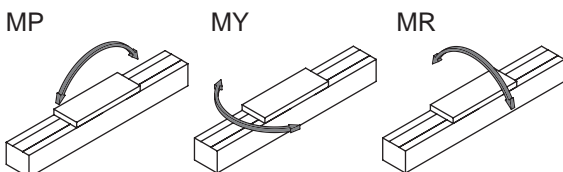
		(mm/s)	
Lead equivalent	Stroke length	100 to 800	
	40		2000

*The max. speed is the speed when the motor mounted by the customer can output a rotation speed of 3000 rpm.

Allowable overhang length

*Refer to page 446 for details.

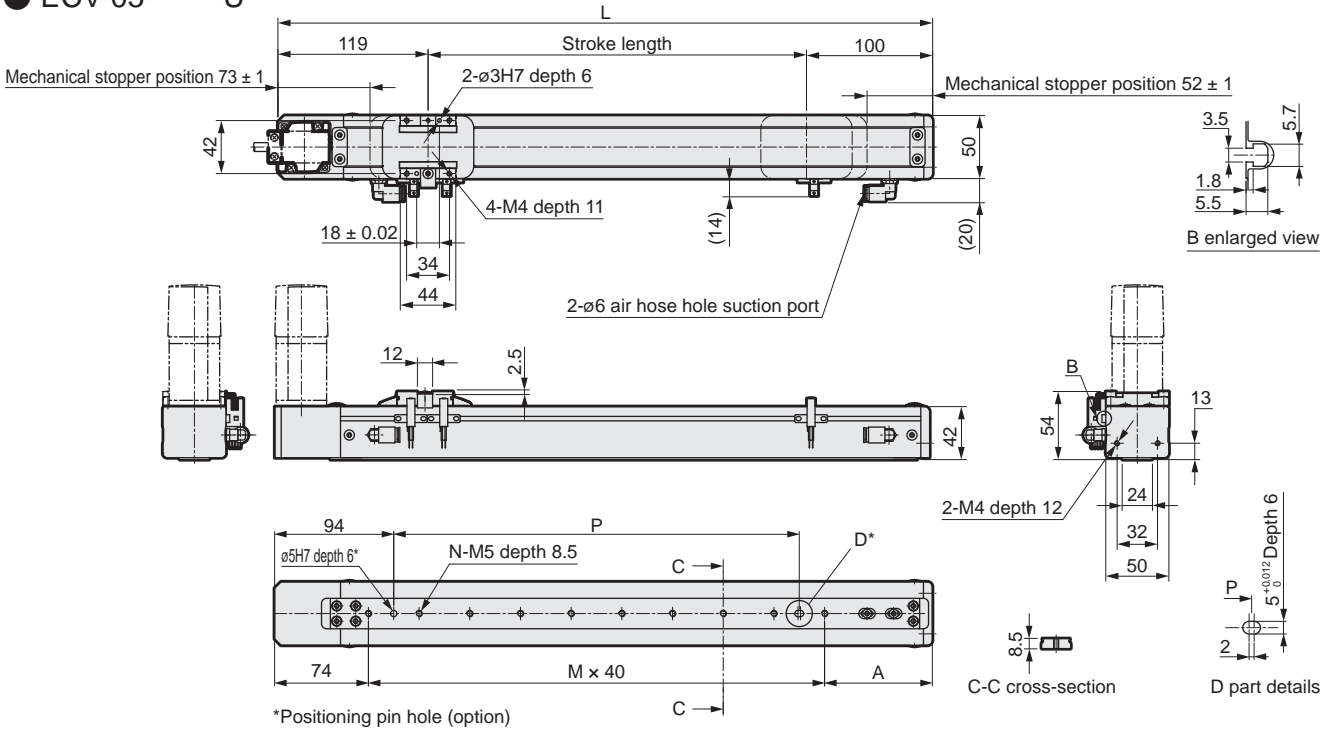
Moment direction



Safety precautions

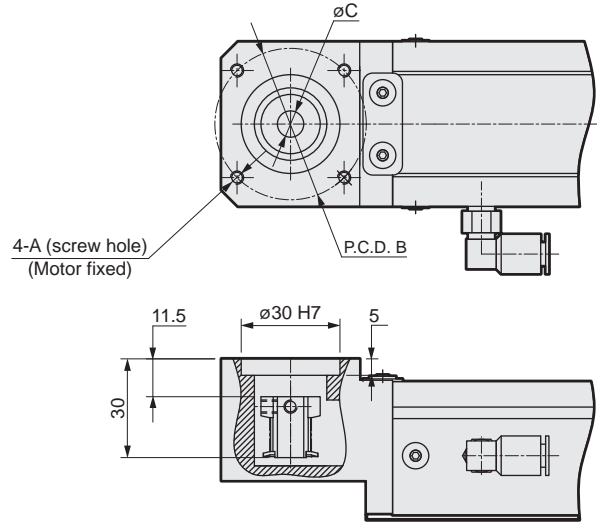
Dimensions Motor top mounting

● ECV-05-****-U



Stroke length (mm)	100	150	200	250	300	350	400	450	500	550	600	650	700	750	800
L	319	369	419	469	519	569	619	669	719	769	819	869	919	969	1019
A	85	95	65	75	85	95	65	75	85	95	65	75	85	95	65
M	4	5	7	8	9	10	12	13	14	15	17	18	19	20	22
N	5	6	8	9	10	11	13	14	15	16	18	19	20	21	23
P	120	160	240	280	320	360	440	480	520	560	640	680	720	760	800
Weight (kg)	2.2	2.3	2.4	2.5	2.6	2.7	2.8	2.9	3.0	3.1	3.2	3.3	3.4	3.5	3.6

Motor mounting part



Mounted motor specification	A	B	C	Motor mounting bolt
M 100 W	M4	$\phi 46$	$\phi 8$	4-M4 x L12
Y 100 W	M4	$\phi 46$	$\phi 8$	4-M4 x L12
P 100 W	M3	$\phi 45$	$\phi 8$	4-M3 x L12
F 100 W	M4	$\phi 46$	$\phi 8$	4-M4 x L12

List of attachments

[Motor mounting parts]

Mounted motor specification	Timing belt, pulley	Fitting	Motor capacity	Motor mounting bolt	
				Size	Quantity
M	Included at shipment	Assembled at shipment	100 W	M4	2
Y				M4	2
P				M3	4
F				M4	2

*Refer to page 452 for fitting details.

[Origin sensor/Limit sensor]

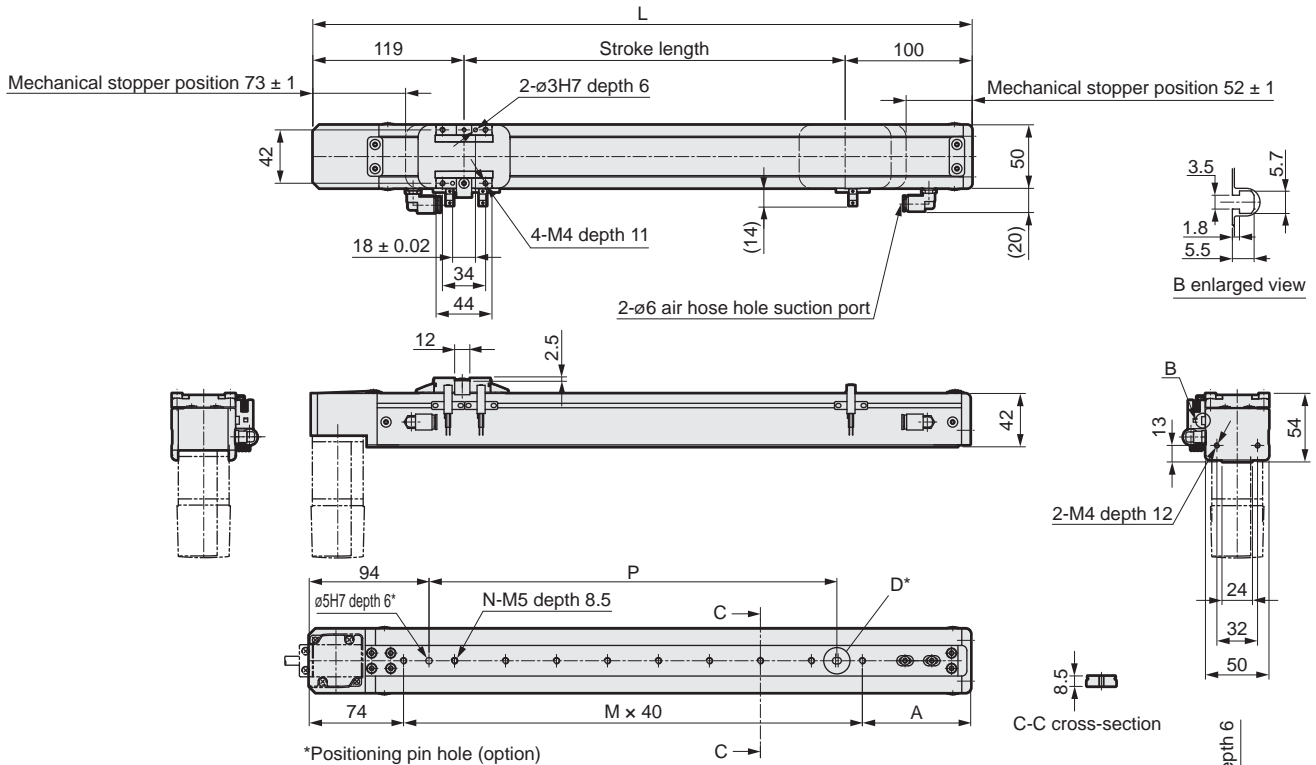
Manufacturer	Model	Quantity
OMRON Corporation	EE-SX672	3

*Refer to page 448 for sensor specifications.

ECV-05 Series

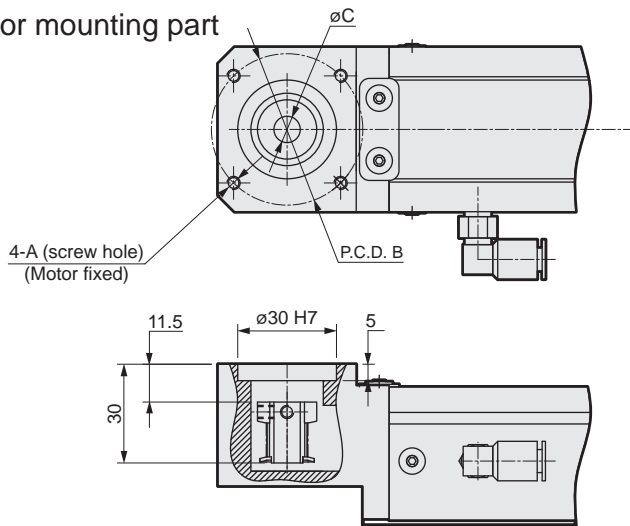
Dimensions Motor bottom mounting

● ECV-05-*****-D



Stroke length (mm)	100	150	200	250	300	350	400	450	500	550	600	650	700	750	800
L	319	369	419	469	519	569	619	669	719	769	819	869	919	969	1019
A	85	95	65	75	85	95	65	75	85	95	65	75	85	95	65
M	4	5	7	8	9	10	12	13	14	15	17	18	19	20	22
N	5	6	8	9	10	11	13	14	15	16	18	19	20	21	23
P	120	160	240	280	320	360	440	480	520	560	640	680	720	760	800
Weight (kg)	2.2	2.3	2.4	2.5	2.6	2.7	2.8	2.9	3.0	3.1	3.2	3.3	3.4	3.5	3.6

Motor mounting part



Mounted motor specification	A	B	C	Motor mounting bolt
M 100 W	M4	ø46	ø8	4-M4 × L12
Y 100 W	M4	ø46	ø8	4-M4 × L12
P 100 W	M3	ø45	ø8	4-M3 × L12
F 100 W	M4	ø46	ø8	4-M4 × L12

List of attachments

[Motor mounting parts]

Mounted motor specification	Timing belt, pulley	Fitting	Motor capacity	Motor mounting bolt	
				Size	Quantity
M	Included at shipment	Assembled at shipment	100 W	M4	2
Y				M4	2
P				M3	4
F				M4	2

[Origin sensor/Limit sensor]

Manufacturer	Model	Quantity
OMRON Corporation	EE-SX672	3

*Refer to page 448 for sensor specifications.

*Refer to page 452 for fitting details.

MEMO

Servo motor compatible						Stepper motor compatible					
EBS	EBR	ETS	ETS Multi-Axis	ECS	ETV	ECV	EKS	EBS	EBR	ETS	ECS

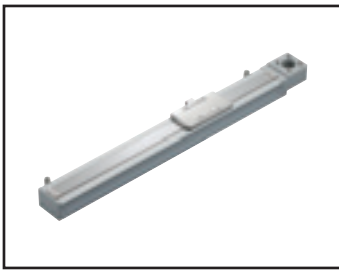
Safety precautions

Electric actuator Belt

ECV-06 Series

Motor side mounting (left, right, bottom)

● Servo motor capacity: 100 W



How to order



A Body size

06	Body width 65 mm
----	------------------

B Lead equivalent

40	40 mm
----	-------

C Stroke length

010	100 mm
to	(In 50 mm increments)
080	800 mm

D Motor mounting direction

U	Top mounting
D	Bottom mounting

E Mounted motor specification

M	Select the mounted motor specification from the table below.
Y	
P	
F	

F Motor capacity

1	100 W
---	-------

G Driving belt

X	Standard (rubber)
---	-------------------

H Origin sensor (1 pc) *1 *2

N	None
C	Outside motor side
D	Outside motor opposite side

K Positioning pin hole

N	None
P	Yes

I Grease nipple *3

N	None (Body mounting direction: Standard)
---	--

J Limit sensor (2 pcs) *1 *2

N	None
B	Outside

Manufacturer	100 W
Mitsubishi Electric Corporation	M
Delta Electronics Co., Ltd.	M
Sanyo Denki Co., Ltd.	M
YASKAWA Electric Corporation	Y
Keyence Corporation	Y
Panasonic Corporation	P
OMRON Corporation	M
Fuji Electric Co., Ltd.	M
FANUC CORPORATION	F
Bosch Rexroth AG	P
Rockwell Automation, Inc.	M
SIEMENS AG	M

*1: Origin sensor and limit sensor are available as a set. As it is both-or-nothing, select "None" for both.

*2: The user can adjust the sensor position. (Included at shipment)

*3: "Body mounting direction: Standard" here refers to mounting from the bottom side.

*Refer to page 403 for the motor model No.

Specifications

Applicable motor capacity	100 W servo motor
Drive method	Belt width 12 mm
Stroke length	mm 100 to 800
Lead equivalent	mm 40
Max. load capacity *1	Horizontal kg 3
	Vertical kg -
Max. speed	mm/s 2000
Rated thrust *1	N 42
Repeatability	mm ±0.08
Lost motion	0.2 mm or less
Dynamic allowable load	N 1209.1
Static allowable moment	N·m MP: 80, MY: 70, MR: 75
Dynamic allowable moment	N·m MP: 8.9, MY: 8.9, MR: 24.8
Operating ambient temperature, humidity	0 to 40°C (no freezing) 35 to 80% RH (no condensation)
Storage ambient temperature, humidity	-10 to 50°C (no freezing) 35 to 80% RH (no condensation)
Atmosphere	No corrosive gas, explosive gas, or dust

*1 Rated thrust and max. load capacity are guideline values assuming that the motor mounted will output the rated torque.

Stroke and max. speed

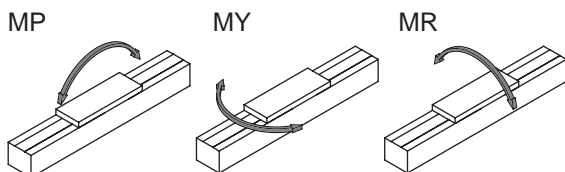
		(mm/s)	
Lead equivalent	Stroke length	100 to 800	
	40		2000

*The max. speed is the speed when the motor mounted by the customer can output a rotation speed of 3000 rpm.

Allowable overhang length

*Refer to page 446 for details.

Moment direction



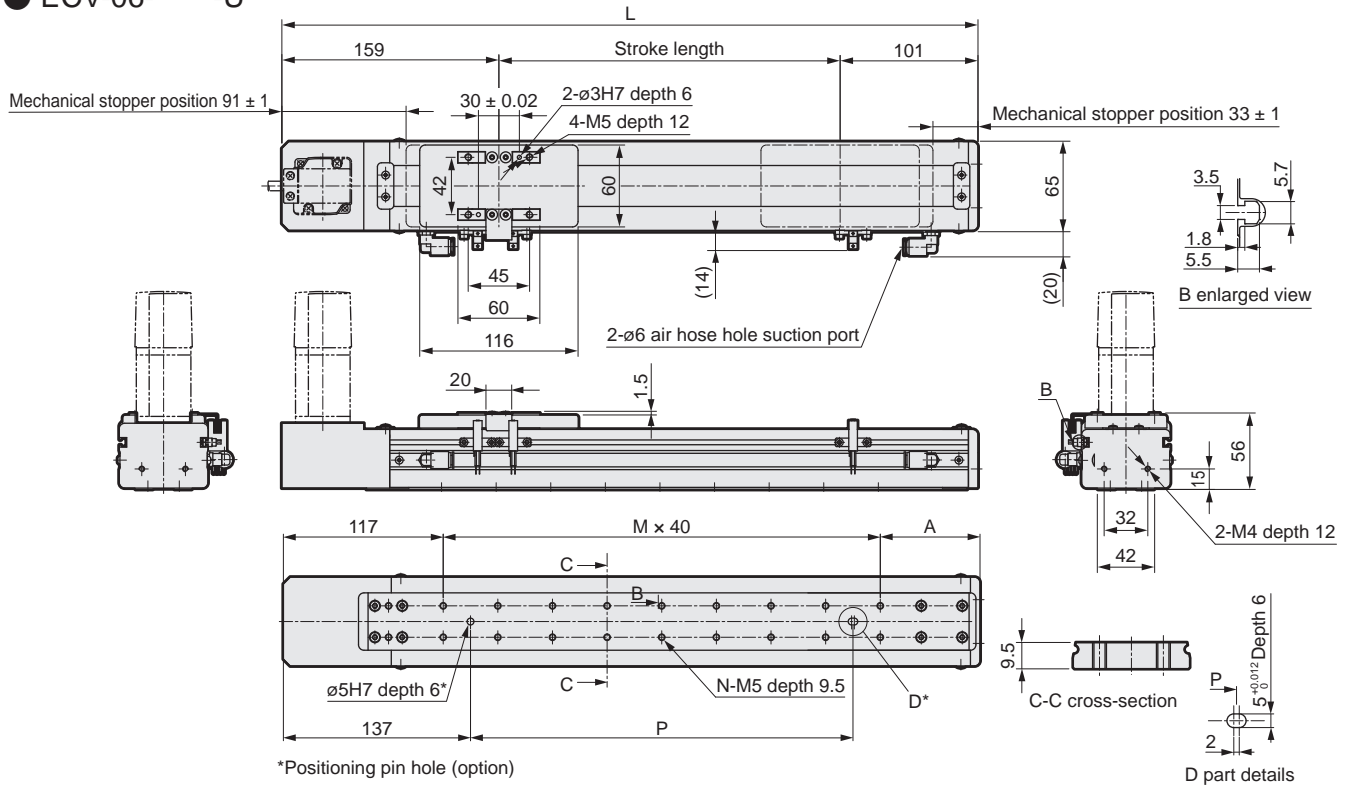
Safety precautions

EBS
EBR
ETS
ETS Multi-Axis
ECS
ETV
ECV
EKS
EBS
EBR
ETS
ECS

Servo motor compatible
Stepper motor compatible
Safety precautions

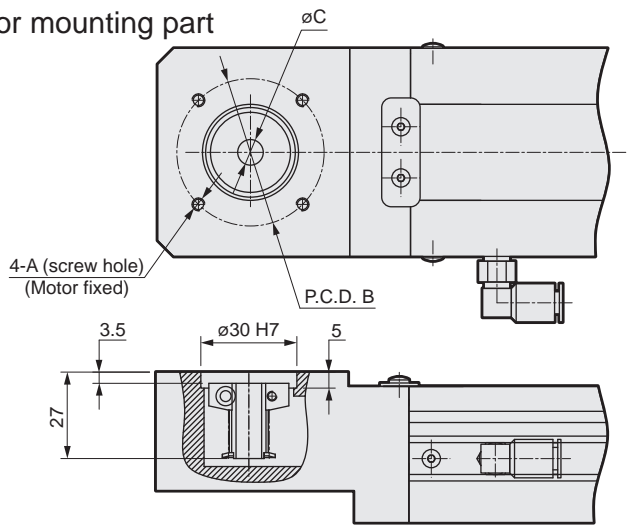
Dimensions Motor top mounting

● ECV-06-****-U



Stroke length (mm)	100	150	200	250	300	350	400	450	500	550	600	650	700	750	800
L	360	410	460	510	560	610	660	710	760	810	860	910	960	1010	1060
A	83	93	63	73	83	93	63	73	83	93	63	73	83	93	63
M	4	5	7	8	9	10	12	13	14	15	17	18	19	20	22
N	10	12	16	18	20	22	26	28	30	32	36	38	40	42	46
P	120	160	240	280	320	360	440	480	520	560	640	680	720	760	840
Weight (kg)	2.5	2.6	2.8	3.0	3.3	3.4	3.5	3.7	3.9	4.1	4.2	4.4	4.6	4.8	4.9

Motor mounting part



Mounted motor specification		A	B	C	Motor mounting bolt
M	100 W	M4	$\phi 46$	$\phi 8$	4-M4 x L12
Y	100 W	M4	$\phi 46$	$\phi 8$	4-M4 x L12
P	100 W	M3	$\phi 45$	$\phi 8$	4-M3 x L12
F	100 W	M4	$\phi 46$	$\phi 8$	4-M4 x L12

List of attachments

[Motor mounting parts]

Mounted motor specification	Timing belt, pulley	Fitting	Motor capacity	Motor mounting bolt	
				Size	Quantity
M	Included at shipment	Assembled at shipment	100 W	M4	2
Y				M4	2
P				M3	4
F				M4	2

[Origin sensor/Limit sensor]

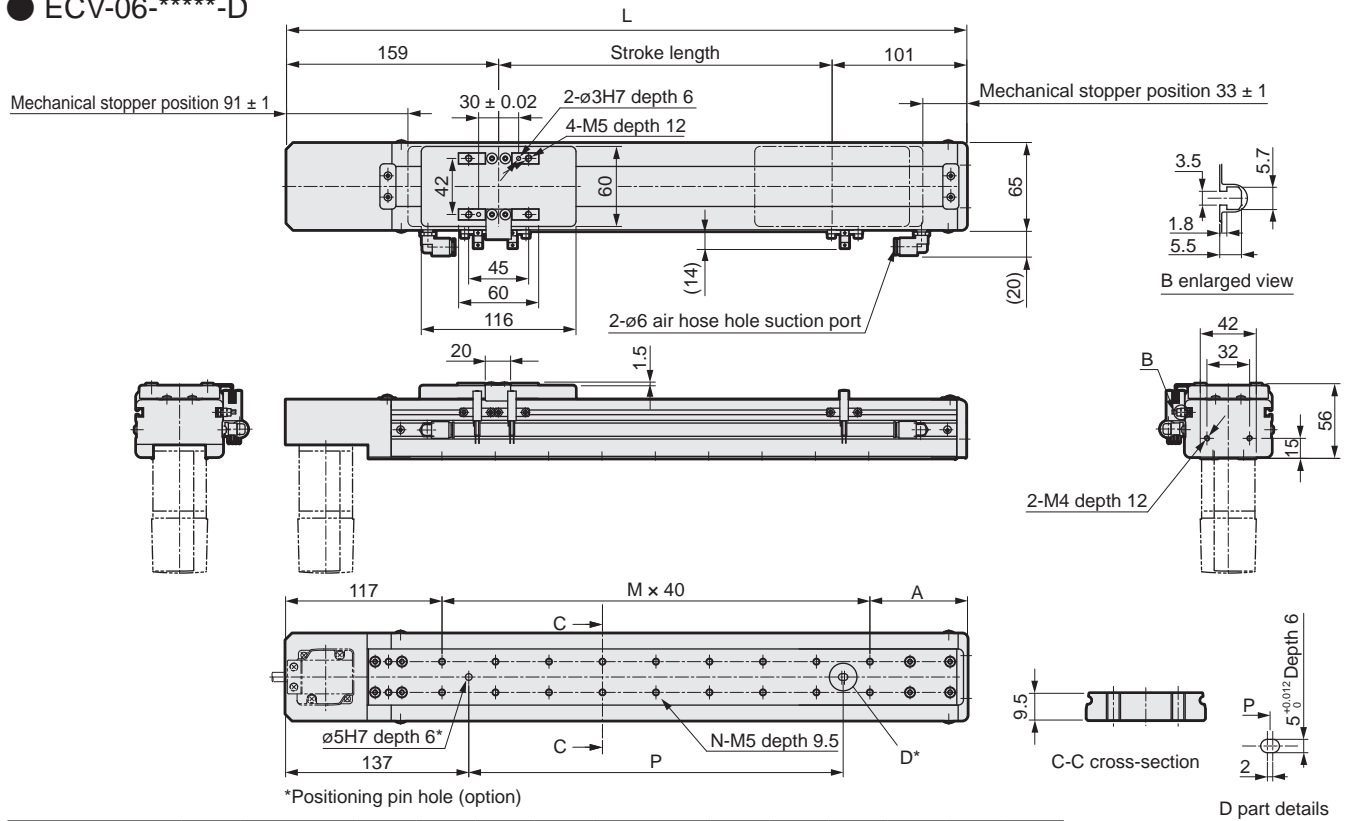
Manufacturer	Model	Quantity
OMRON Corporation	EE-SX672	3

*Refer to page 448 for sensor specifications.

*Refer to page 452 for fitting details.

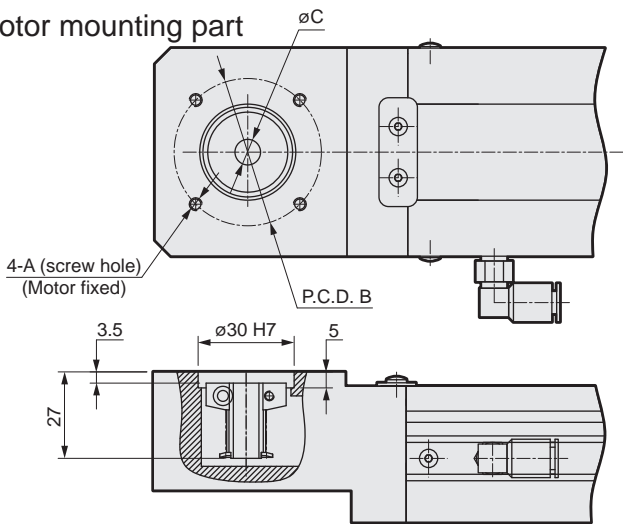
Dimensions Motor bottom mounting

● ECV-06-****-D



Stroke length (mm)	100	150	200	250	300	350	400	450	500	550	600	650	700	750	800
L	360	410	460	510	560	610	660	710	760	810	860	910	960	1010	1060
A	83	93	63	73	83	93	63	73	83	93	63	73	83	93	63
M	4	5	7	8	9	10	12	13	14	15	17	18	19	20	22
N	10	12	16	18	20	22	26	28	30	32	36	38	40	42	46
P	120	160	240	280	320	360	440	480	520	560	640	680	720	760	840
Weight (kg)	2.5	2.6	2.8	3.0	3.3	3.4	3.5	3.7	3.9	4.1	4.2	4.4	4.6	4.8	4.9

Motor mounting part



Mounted motor specification		A	B	C	Motor mounting bolt
M	100 W	M4	$\phi 46$	$\phi 8$	4-M4 x L12
Y	100 W	M4	$\phi 46$	$\phi 8$	4-M4 x L12
P	100 W	M3	$\phi 45$	$\phi 8$	4-M3 x L12
F	100 W	M4	$\phi 46$	$\phi 8$	4-M4 x L12

List of attachments

[Motor mounting parts]

Mounted motor specification	Timing belt, pulley	Fitting	Motor capacity	Motor mounting bolt	
				Size	Quantity
M	Included at shipment	Assembled at shipment	100 W	M4	2
Y				M4	2
P				M3	4
F				M4	2

*Refer to page 452 for fitting details.

[Origin sensor/Limit sensor]

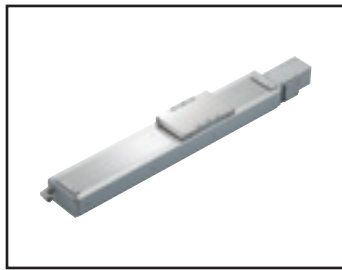
Manufacturer	Model	Quantity
OMRON Corporation	EE-SX672	3

*Refer to page 448 for sensor specifications.

MEMO

Servo motor compatible						Stepper motor compatible					
EBS	EBR	ETS	ETS Multi-Axis	ECS	ETV	ECV	EKS	EBS	EBR	ETS	ECS

Safety precautions



Electric actuator Belt ECV-10 Series

Motor side mounting (left, right, bottom)

● Servo motor capacity: 100 W

How to order

ECV - 10 - 32 010 - R M 1 X N N N N

A Body size

10	Body width 102 mm
----	-------------------

B Lead equivalent

32	32 mm
----	-------

C Stroke length

010	100 mm
to	(In 50 mm increments)
255	2550 mm

D Motor mounting direction *5

R	Right mounting
S	Right top mounting
T	Right bottom mounting
L	Left mounting
V	Left top mounting
W	Left bottom mounting

E Mounted motor specification

M	Select the mounted motor specification from the table below.
Y	
P	
F	

F Motor capacity

1	100 W
---	-------

G Driving belt

X	Standard (rubber)
L	Low dust generation (urethane)

H Origin sensor (1 pc) *1 *2 *3

N	None
C	Outside motor side
D	Outside motor opposite side

K Positioning pin hole

N	None
P	Yes

J Grease nipple *3 *4 *5

N	None (Body mounting direction: Standard)
R	Right
L	Left

I Limit sensor (2 pcs) *1 *2 *3

N	None
B	Outside

Manufacturer	100 W
Mitsubishi Electric Corporation	M
Delta Electronics Co., Ltd.	M
Sanyo Denki Co., Ltd.	M
YASKAWA Electric Corporation	Y
Keyence Corporation	Y
Panasonic Corporation	P
OMRON Corporation	M
Fuji Electric Co., Ltd.	M
FANUC CORPORATION	F
Bosch Rexroth AG	P
Rockwell Automation, Inc.	M
SIEMENS AG	M

*Refer to page 403 for the motor model No.

*1: Origin sensor and limit sensor are available as a set. As it is both-or-nothing, select "None" for both.

*2: The user can adjust the sensor position. (Included at shipment)

*3: Contact CKD to use the origin sensor, limit sensor and grease nipple in the same direction.

*4: "Body mounting direction: Standard" here refers to mounting from the bottom side.

*5: When selecting motor mounting direction R, S, or T, grease nipple R cannot be selected. When selecting L, V, or W, grease nipple L cannot be selected.

Specifications

Applicable motor capacity	100 W servo motor
Drive method	Belt width 15 mm
Stroke length mm	100 to 2550
Lead equivalent mm	32
Max. load capacity	Horizontal kg
*1	Vertical kg
	10
	-
Max. speed mm/s	1600
Rated thrust *1 N	61
Repeatability mm	±0.04
Lost motion	0.1 mm or less
Dynamic allowable load N	2651.4
Static allowable moment N·m	MP: 110, MY: 110, MR: 120
Dynamic allowable moment N·m	MP: 24.1, MY: 24.1, MR: 24.8
Operating ambient temperature, humidity	0 to 40°C (no freezing) 35 to 80% RH (no condensation)
Storage ambient temperature, humidity	-10 to 50°C (no freezing) 35 to 80% RH (no condensation)
Atmosphere	No corrosive gas, explosive gas, or dust

*1 Rated thrust and max. load capacity are guideline values assuming that the motor mounted will output the rated torque.

Stroke and max. speed

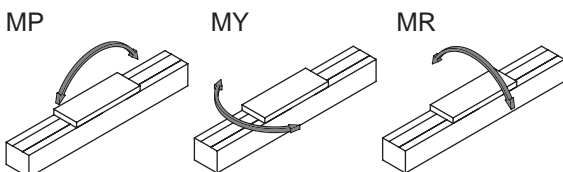
		(mm/s)
Stroke length	Lead equivalent	100 to 2550
		1600
	32	1600

*The max. speed is the speed when the motor mounted by the customer can output a rotation speed of 3000 rpm.

Allowable overhang length

*Refer to page 446 for details.

Moment direction

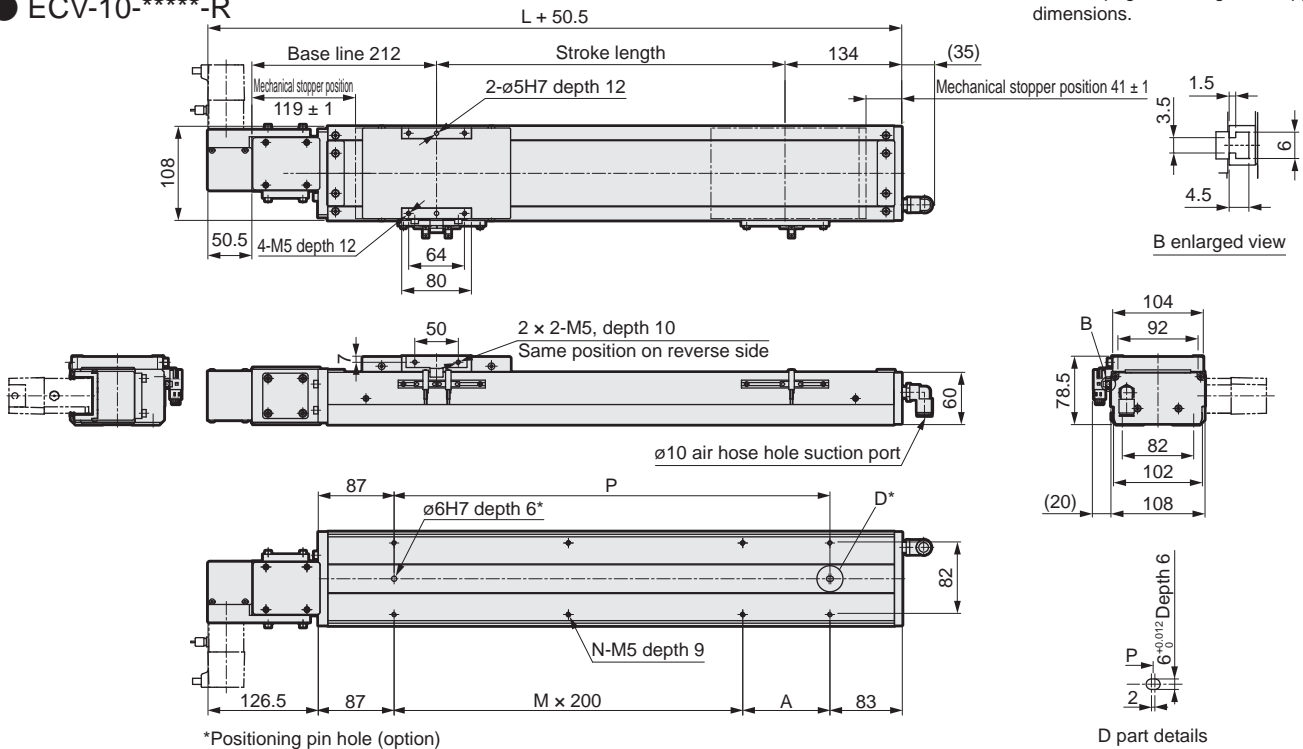


Safety precautions

Dimensions Motor right-side mounting

● ECV-10-****-R

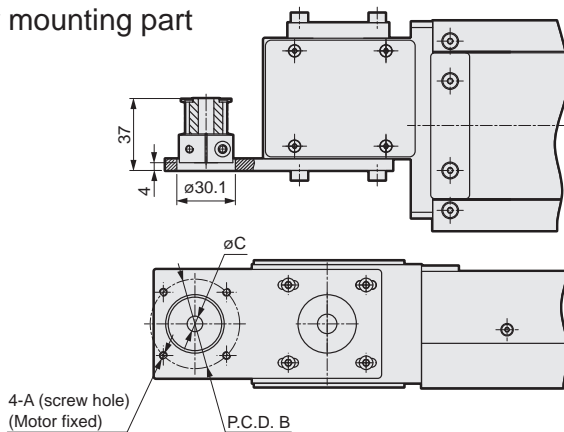
· Refer to page 450 for grease nipple dimensions.



Stroke length (mm)	100	150	200	250	300	350	400	450	500	550	600	650	700	750	800	850	900	950	1000	1050	1100	1150	1200	1250	1300
L	446	496	546	596	646	696	746	796	846	896	946	996	1046	1096	1146	1196	1246	1296	1346	1396	1446	1496	1546	1596	1646
A	200	50	100	150	200	50	100	150	200	50	100	150	200	50	100	150	200	50	100	150	200	50	100	150	200
M	0	1	1	1	1	2	2	2	2	3	3	3	3	4	4	4	4	5	5	5	5	6	6	6	6
N	4	6	6	6	6	8	8	8	8	10	10	10	10	12	12	12	12	14	14	14	14	16	16	16	16
P	200	250	300	350	400	450	500	550	600	650	700	750	800	850	900	950	1000	1050	1100	1150	1200	1250	1300	1350	1400
Weight (kg)	8.3	8.7	9.2	9.6	10.0	10.4	10.8	11.3	11.7	12.1	12.5	13.0	13.4	13.8	14.2	14.7	15.1	15.5	15.9	16.3	16.8	17.2	17.6	18.0	18.4

Stroke length (mm)	1350	1400	1450	1500	1550	1600	1650	1700	1750	1800	1850	1900	1950	2000	2050	2100	2150	2200	2250	2300	2350	2400	2450	2500	2550
L	1696	1746	1796	1846	1896	1946	1996	2046	2096	2146	2196	2246	2296	2346	2396	2446	2496	2546	2596	2646	2696	2746	2796	2846	2896
A	50	100	150	200	50	100	150	200	50	100	150	200	50	100	150	200	50	100	150	200	50	100	150	200	50
M	7	7	7	7	8	8	8	8	9	9	9	9	10	10	10	10	11	11	11	11	12	12	12	12	13
N	18	18	18	18	20	20	20	20	22	22	22	22	24	24	24	24	26	26	26	26	28	28	28	28	30
P	1450	1500	1550	1600	1650	1700	1750	1800	1850	1900	1950	2000	2050	2100	2150	2200	2250	2300	2350	2400	2450	2500	2550	2600	2650
Weight (kg)	18.9	19.3	19.7	20.1	20.5	21.0	21.4	21.8	22.2	22.4	23.1	23.5	23.9	24.3	24.7	25.2	25.6	26.0	26.4	26.8	27.3	27.7	28.1	28.5	28.9

Motor mounting part



Mounted motor specification		A	B	C	Motor mounting bolt
M	100 W	M4	ø46	ø8	4-M4 x L12
Y	100 W	M4	ø46	ø8	4-M4 x L12
P	100 W	M3	ø45	ø8	4-M3 x L12
F	100 W	M4	ø46	ø8	4-M4 x L12

List of attachments

[Motor mounting parts]

Mounted motor specification	Timing belt, pulley	Fitting	Motor capacity	Motor mounting bolt	
				Size	Quantity
M	Included at shipment	Included at shipment	100 W	M4	2
Y				M4	2
P				M3	4
F				M4	2

[Origin sensor/Limit sensor]

Manufacturer	Model	Quantity
OMRON Corporation	EE-SX672	3

*Refer to page 448 for sensor specifications.

*Refer to page 452 for fitting details.

EBS

EBR

ETS

Servo motor compatible
ETS Multi-Axis

ECS

ETV

ECV

EKS

EBS

Stepper motor compatible
EBR

ETS

ECS

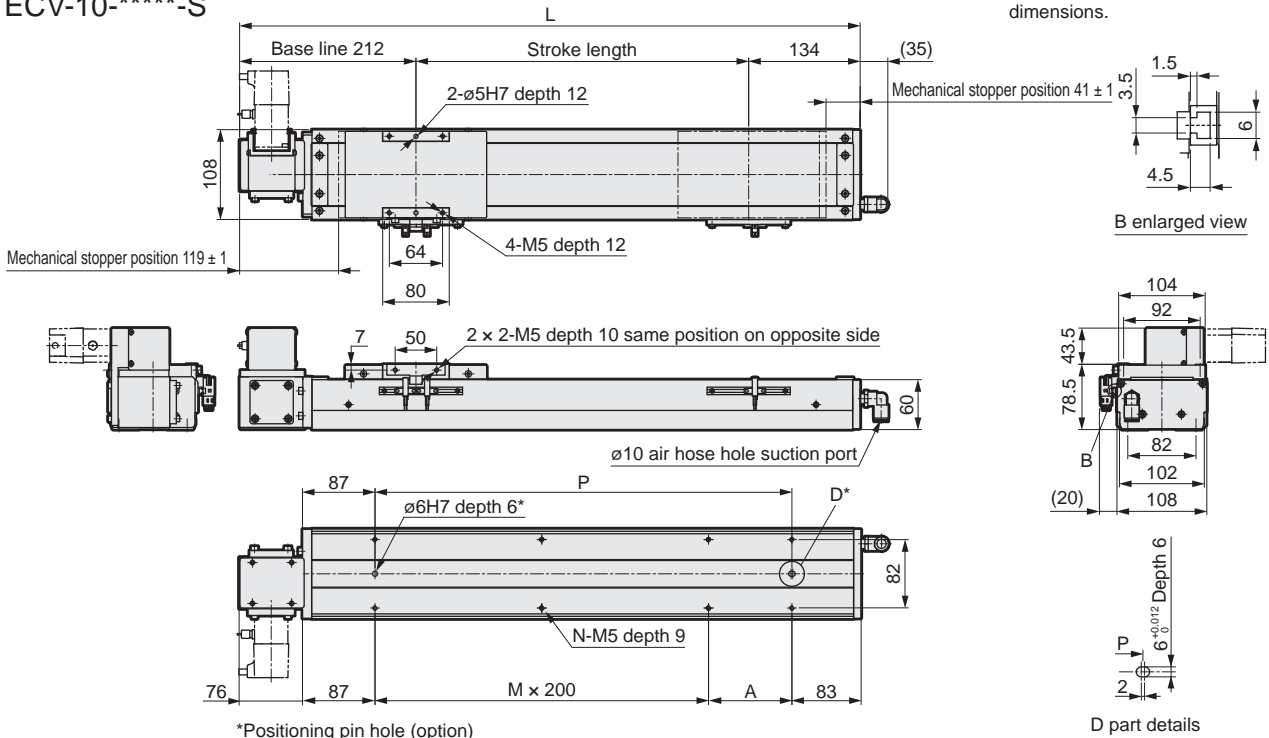
Safety
precautions

ECV-10 Series

Dimensions Motor right top mounting

● ECV-10-*****-S

Refer to page 450 for grease nipple dimensions.



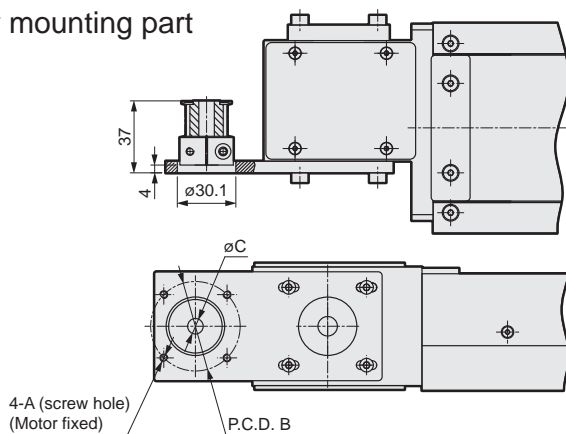
*Positioning pin hole (option)

D part details

Stroke length (mm)	100	150	200	250	300	350	400	450	500	550	600	650	700	750	800	850	900	950	1000	1050	1100	1150	1200	1250	1300
L	446	496	546	596	646	696	746	796	846	896	946	996	1046	1096	1146	1196	1246	1296	1346	1396	1446	1496	1546	1596	1646
A	200	50	100	150	200	50	100	150	200	50	100	150	200	50	100	150	200	50	100	150	200	50	100	150	200
M	0	1	1	1	1	2	2	2	2	3	3	3	3	4	4	4	4	5	5	5	5	6	6	6	6
N	4	6	6	6	6	8	8	8	8	10	10	10	10	10	12	12	12	14	14	14	14	16	16	16	16
P	200	250	300	350	400	450	500	550	600	650	700	750	800	850	900	950	1000	1050	1100	1150	1200	1250	1300	1350	1400
Weight (kg)	8.3	8.7	9.2	9.6	10.0	10.4	10.8	11.3	11.7	12.1	12.5	13.0	13.4	13.8	14.2	14.7	15.1	15.5	15.9	16.3	16.8	17.2	17.6	18.0	18.4

Stroke length (mm)	1350	1400	1450	1500	1550	1600	1650	1700	1750	1800	1850	1900	1950	2000	2050	2100	2150	2200	2250	2300	2350	2400	2450	2500	2550
L	1696	1746	1796	1846	1896	1946	1996	2046	2096	2146	2196	2246	2296	2346	2396	2446	2496	2546	2596	2646	2696	2746	2796	2846	2896
A	50	100	150	200	50	100	150	200	50	100	150	200	50	100	150	200	50	100	150	200	50	100	150	200	50
M	7	7	7	7	8	8	8	8	9	9	9	9	9	10	10	10	10	11	11	11	11	12	12	12	13
N	18	18	18	18	20	20	20	20	22	22	22	22	24	24	24	24	26	26	26	26	28	28	28	28	30
P	1450	1500	1550	1600	1650	1700	1750	1800	1850	1900	1950	2000	2050	2100	2150	2200	2250	2300	2350	2400	2450	2500	2550	2600	2650
Weight (kg)	18.9	19.3	19.7	20.1	20.5	21.0	21.4	21.8	22.2	22.4	23.1	23.5	23.9	24.3	24.7	25.2	25.6	26.0	26.4	26.8	27.3	27.7	28.1	28.5	28.9

Motor mounting part



Mounted motor specification	A	B	C	Motor mounting bolt
M 100 W	M4	ø46	ø8	4-M4 x L12
Y 100 W	M4	ø46	ø8	4-M4 x L12
P 100 W	M3	ø45	ø8	4-M3 x L12
F 100 W	M4	ø46	ø8	4-M4 x L12

List of attachments

[Motor mounting parts]

Mounted motor specification	Timing belt, pulley	Fitting	Motor capacity	Motor mounting bolt	
				Size	Quantity
M	Included at shipment	Included at shipment	100 W	M4	2
Y				M4	2
P				M3	4
F				M4	2

[Origin sensor/Limit sensor]

Manufacturer	Model	Quantity
OMRON Corporation	EE-SX672	3

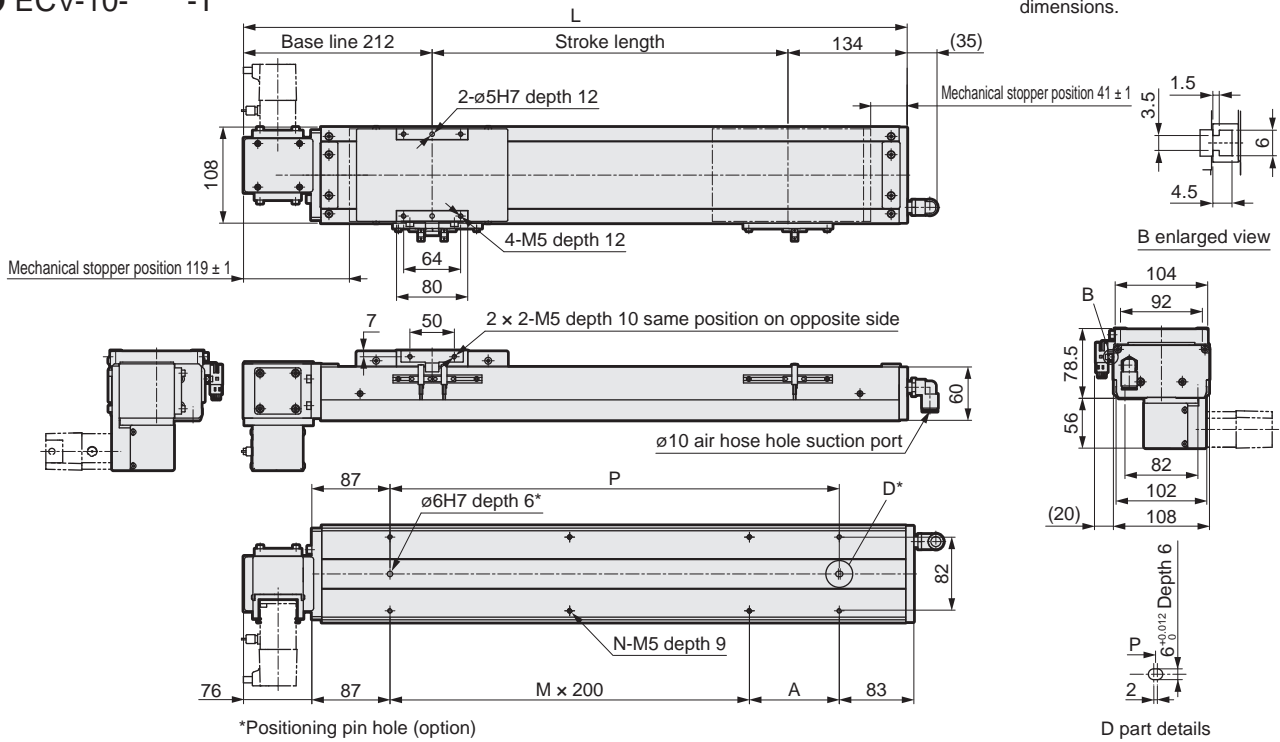
*Refer to page 448 for sensor specifications.

*Refer to page 452 for fitting details.

Dimensions Motor right bottom mounting

● ECV-10-****-T

· Refer to page 450 for grease nipple dimensions.

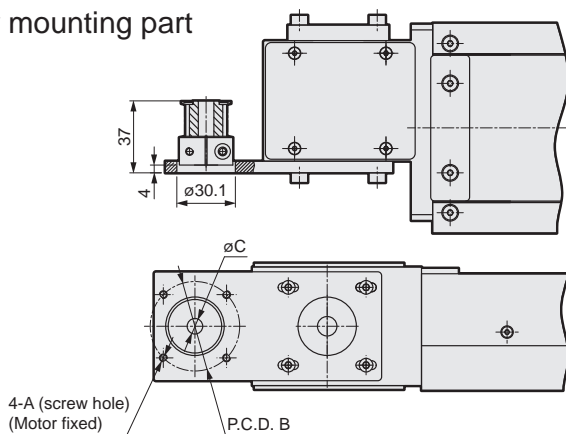


*Positioning pin hole (option)

Stroke length (mm)	100	150	200	250	300	350	400	450	500	550	600	650	700	750	800	850	900	950	1000	1050	1100	1150	1200	1250	1300
L	446	496	546	596	646	696	746	796	846	896	946	996	1046	1096	1146	1196	1246	1296	1346	1396	1446	1496	1546	1596	1646
A	200	50	100	150	200	50	100	150	200	50	100	150	200	50	100	150	200	50	100	150	200	50	100	150	200
M	0	1	1	1	1	2	2	2	2	3	3	3	3	4	4	4	4	5	5	5	5	6	6	6	6
N	4	6	6	6	6	8	8	8	8	10	10	10	10	12	12	12	12	14	14	14	14	16	16	16	16
P	200	250	300	350	400	450	500	550	600	650	700	750	800	850	900	950	1000	1050	1100	1150	1200	1250	1300	1350	1400
Weight (kg)	8.3	8.7	9.2	9.6	10.0	10.4	10.8	11.3	11.7	12.1	12.5	13.0	13.4	13.8	14.2	14.7	15.1	15.5	15.9	16.3	16.8	17.2	17.6	18.0	18.4

Stroke length (mm)	1350	1400	1450	1500	1550	1600	1650	1700	1750	1800	1850	1900	1950	2000	2050	2100	2150	2200	2250	2300	2350	2400	2450	2500	2550
L	1696	1746	1796	1846	1896	1946	1996	2046	2096	2146	2196	2246	2296	2346	2396	2446	2496	2546	2596	2646	2696	2746	2796	2846	2896
A	50	100	150	200	50	100	150	200	50	100	150	200	50	100	150	200	50	100	150	200	50	100	150	200	50
M	7	7	7	7	8	8	8	8	9	9	9	9	10	10	10	10	11	11	11	11	12	12	12	13	13
N	18	18	18	18	20	20	20	20	22	22	22	22	24	24	24	24	26	26	26	26	28	28	28	28	30
P	1450	1500	1550	1600	1650	1700	1750	1800	1850	1900	1950	2000	2050	2100	2150	2200	2250	2300	2350	2400	2450	2500	2550	2600	2650
Weight (kg)	18.9	19.3	19.7	20.1	20.5	21.0	21.4	21.8	22.2	22.4	23.1	23.5	23.9	24.3	24.7	25.2	25.6	26.0	26.4	26.8	27.3	27.7	28.1	28.5	28.9

Motor mounting part



Mounted motor specification		A	B	C	Motor mounting bolt
M	100 W	M4	ø46	ø8	4-M4 x L12
Y	100 W	M4	ø46	ø8	4-M4 x L12
P	100 W	M3	ø45	ø8	4-M3 x L12
F	100 W	M4	ø46	ø8	4-M4 x L12

List of attachments

[Motor mounting parts]

Mounted motor specification	Timing belt, pulley	Fitting	Motor capacity	Motor mounting bolt	
				Size	Quantity
M	Included at shipment	Included at shipment	100 W	M4	2
Y				M4	2
P				M3	4
F				M4	2

*Refer to page 452 for fitting details.

[Origin sensor/Limit sensor]

Manufacturer	Model	Quantity
OMRON Corporation	EE-SX672	3

*Refer to page 448 for sensor specifications.

EBS

EBR

ETS

ETS Multi-Axis

ECS

ETV

ECV

EKS

EBS

Stepper motor compatible

EBR

ETS

ECS

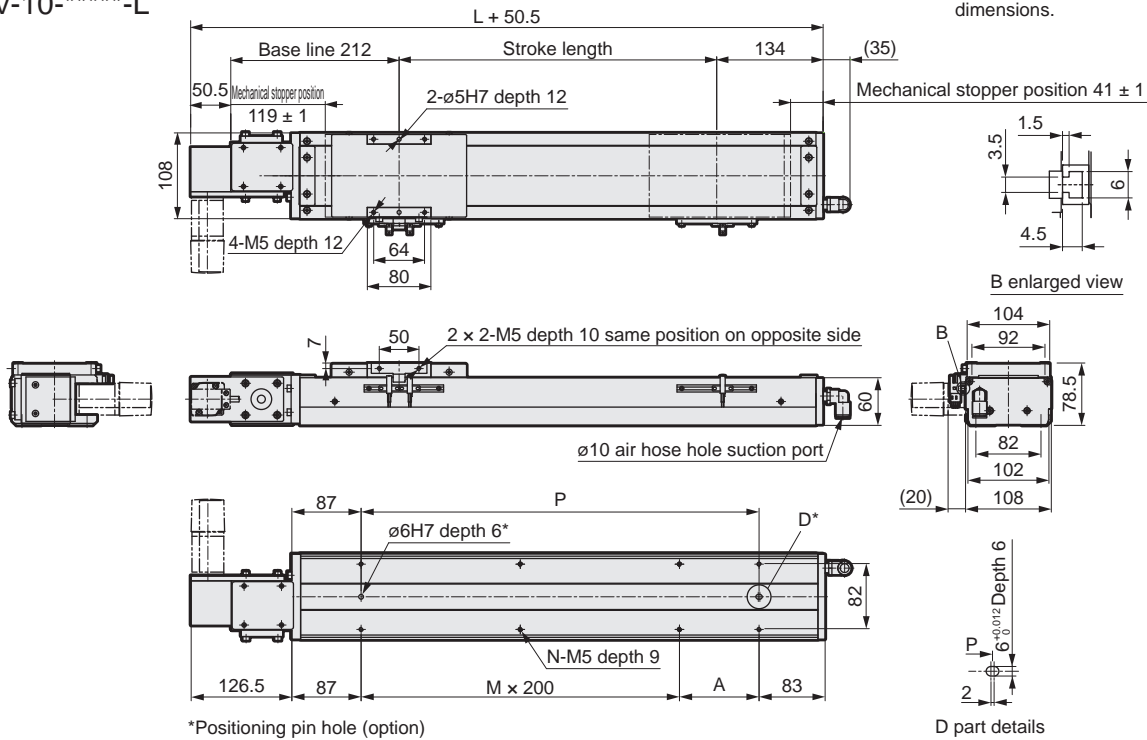
Safety precautions

ECV-10 Series

Dimensions Motor left-side mounting

● ECV-10-*****-L

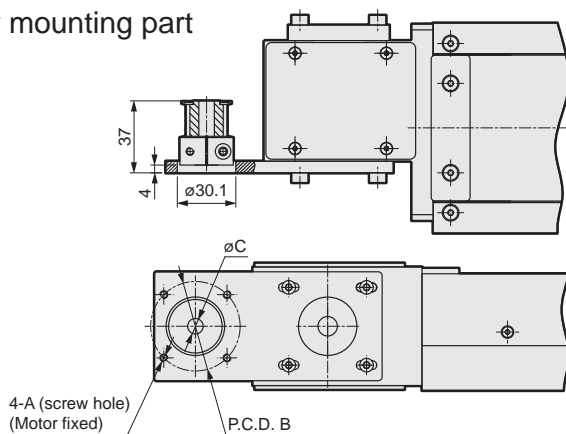
Refer to page 450 for grease nipple dimensions.



Stroke length (mm)	100	150	200	250	300	350	400	450	500	550	600	650	700	750	800	850	900	950	1000	1050	1100	1150	1200	1250	1300
L	446	496	546	596	646	696	746	796	846	896	946	996	1046	1096	1146	1196	1246	1296	1346	1396	1446	1496	1546	1596	1646
A	200	50	100	150	200	50	100	150	200	50	100	150	200	50	100	150	200	50	100	150	200	50	100	150	200
M	0	1	1	1	1	2	2	2	2	3	3	3	3	4	4	4	4	5	5	5	5	6	6	6	6
N	4	6	6	6	6	8	8	8	8	10	10	10	10	12	12	12	12	14	14	14	14	16	16	16	16
P	200	250	300	350	400	450	500	550	600	650	700	750	800	850	900	950	1000	1050	1100	1150	1200	1250	1300	1350	1400
Weight (kg)	8.3	8.7	9.2	9.6	10.0	10.4	10.8	11.3	11.7	12.1	12.5	13.0	13.4	13.8	14.2	14.7	15.1	15.5	15.9	16.3	16.8	17.2	17.6	18.0	18.4

Stroke length (mm)	1350	1400	1450	1500	1550	1600	1650	1700	1750	1800	1850	1900	1950	2000	2050	2100	2150	2200	2250	2300	2350	2400	2450	2500	2550
L	1696	1746	1796	1846	1896	1946	1996	2046	2096	2146	2196	2246	2296	2346	2396	2446	2496	2546	2596	2646	2696	2746	2796	2846	2896
A	50	100	150	200	50	100	150	200	50	100	150	200	50	100	150	200	50	100	150	200	50	100	150	200	50
M	7	7	7	7	8	8	8	8	9	9	9	9	9	10	10	10	10	11	11	11	11	12	12	12	13
N	18	18	18	18	20	20	20	20	22	22	22	22	24	24	24	24	26	26	26	26	28	28	28	28	30
P	1450	1500	1550	1600	1650	1700	1750	1800	1850	1900	1950	2000	2050	2100	2150	2200	2250	2300	2350	2400	2450	2500	2550	2600	2650
Weight (kg)	18.9	19.3	19.7	20.1	20.5	21.0	21.4	21.8	22.2	22.4	23.1	23.5	23.9	24.3	24.7	25.2	25.6	26.0	26.4	26.8	27.3	27.7	28.1	28.5	28.9

Motor mounting part



Mounted motor specification	A	B	C	Motor mounting bolt
M 100 W	M4	ø46	ø8	4-M4 x L12
Y 100 W	M4	ø46	ø8	4-M4 x L12
P 100 W	M3	ø45	ø8	4-M3 x L12
F 100 W	M4	ø46	ø8	4-M4 x L12

List of attachments

[Motor mounting parts]

Mounted motor specification	Timing belt, pulley	Fitting	Motor capacity	Motor mounting bolt	
				Size	Quantity
M	Included at shipment	Included at shipment	100 W	M4	2
Y				M4	2
P				M3	4
F				M3	4

[Origin sensor/Limit sensor]

Manufacturer	Model	Quantity
OMRON Corporation	EE-SX672	3

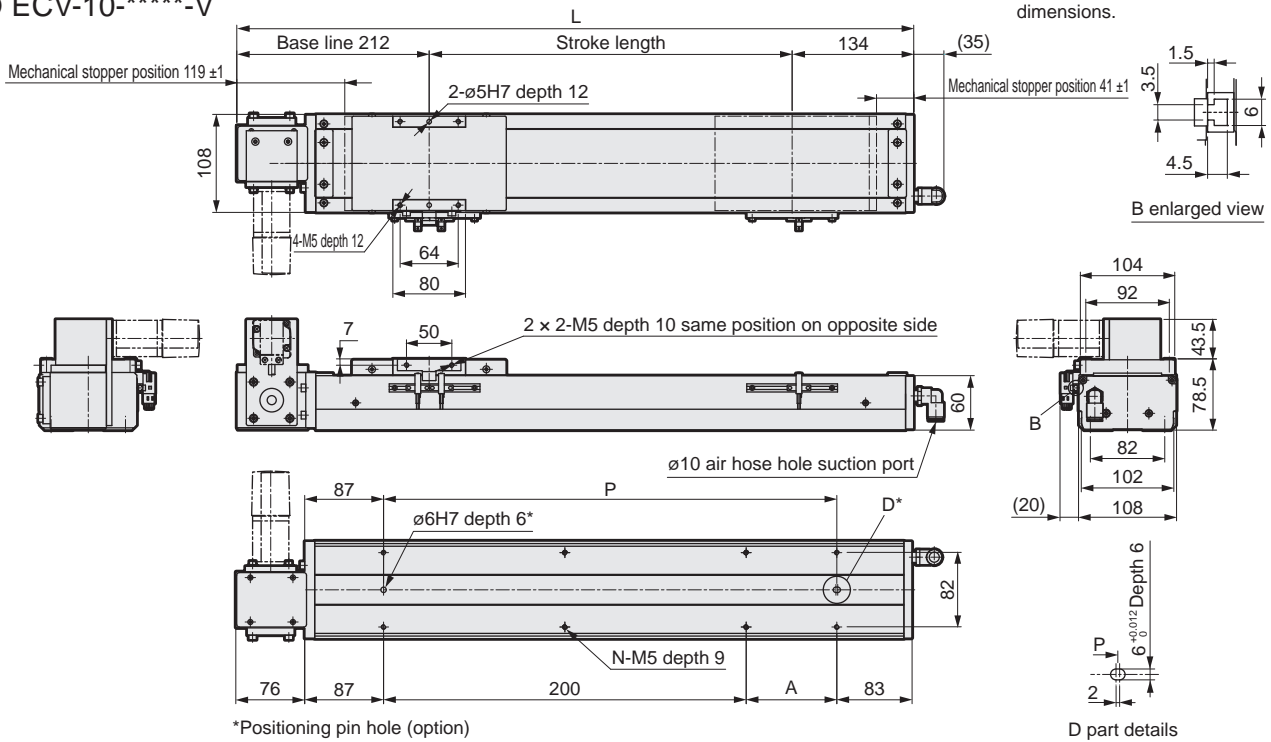
*Refer to page 448 for sensor specifications.

*Refer to page 452 for fitting details.

Dimensions Motor left top mounting

● ECV-10-****-V

· Refer to page 450 for grease nipple dimensions.

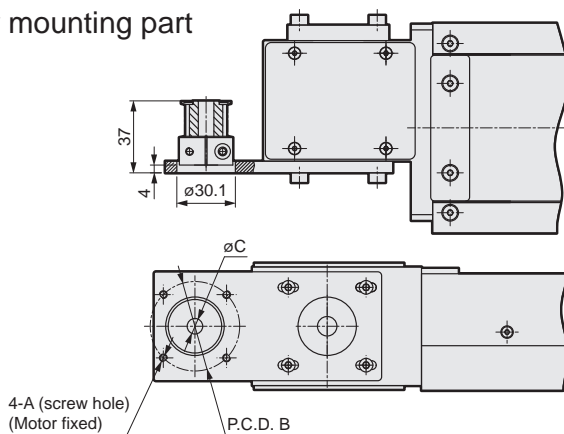


*Positioning pin hole (option)

D part details

Stroke length (mm)	100	150	200	250	300	350	400	450	500	550	600	650	700	750	800	850	900	950	1000	1050	1100	1150	1200	1250	1300
L	446	496	546	596	646	696	746	796	846	896	946	996	1046	1096	1146	1196	1246	1296	1346	1396	1446	1496	1546	1596	1646
A	200	50	100	150	200	50	100	150	200	50	100	150	200	50	100	150	200	50	100	150	200	50	100	150	200
M	0	1	1	1	1	2	2	2	2	3	3	3	3	4	4	4	4	5	5	5	5	6	6	6	6
N	4	6	6	6	6	8	8	8	8	10	10	10	10	12	12	12	12	14	14	14	14	16	16	16	16
P	200	250	300	350	400	450	500	550	600	650	700	750	800	850	900	950	1000	1050	1100	1150	1200	1250	1300	1350	1400
Weight (kg)	8.3	8.7	9.2	9.6	10.0	10.4	10.8	11.3	11.7	12.1	12.5	13.0	13.4	13.8	14.2	14.7	15.1	15.5	15.9	16.3	16.8	17.2	17.6	18.0	18.4
Stroke length (mm)	1350	1400	1450	1500	1550	1600	1650	1700	1750	1800	1850	1900	1950	2000	2050	2100	2150	2200	2250	2300	2350	2400	2450	2500	2550
L	1696	1746	1796	1846	1896	1946	1996	2046	2096	2146	2196	2246	2296	2346	2396	2446	2496	2546	2596	2646	2696	2746	2796	2846	2896
A	50	100	150	200	50	100	150	200	50	100	150	200	50	100	150	200	50	100	150	200	50	100	150	200	50
M	7	7	7	7	8	8	8	8	9	9	9	9	10	10	10	10	11	11	11	11	12	12	12	12	13
N	18	18	18	18	20	20	20	20	22	22	22	22	24	24	24	24	26	26	26	26	28	28	28	28	30
P	1450	1500	1550	1600	1650	1700	1750	1800	1850	1900	1950	2000	2050	2100	2150	2200	2250	2300	2350	2400	2450	2500	2550	2600	2650
Weight (kg)	18.9	19.3	19.7	20.1	20.5	21.0	21.4	21.8	22.2	22.4	23.1	23.5	23.9	24.3	24.7	25.2	25.6	26.0	26.4	26.8	27.3	27.7	28.1	28.5	28.9

Motor mounting part



Mounted motor specification		A	B	C	Motor mounting bolt
M	100 W	M4	ø46	ø8	4-M4 x L12
Y	100 W	M4	ø46	ø8	4-M4 x L12
P	100 W	M3	ø45	ø8	4-M3 x L12
F	100 W	M4	ø46	ø8	4-M4 x L12

List of attachments

[Motor mounting parts]

Mounted motor specification	Timing belt, pulley	Fitting	Motor capacity	Motor mounting bolt	
				Size	Quantity
M	Included at shipment	Included at shipment	100 W	M4	2
Y				M4	2
P				M3	4
F				M4	2

*Refer to page 452 for fitting details.

[Origin sensor/Limit sensor]

Manufacturer	Model	Quantity
OMRON Corporation	EE-SX672	3

*Refer to page 448 for sensor specifications.

EBS

EBR

ETS

ETS Multi-Axis

ECS

ETV

ECV

EKS

EBS

EBR

ETS

ECS

ECV

EBR

ETS

ECS

Servo motor compatible

Stepper motor compatible

Precautions

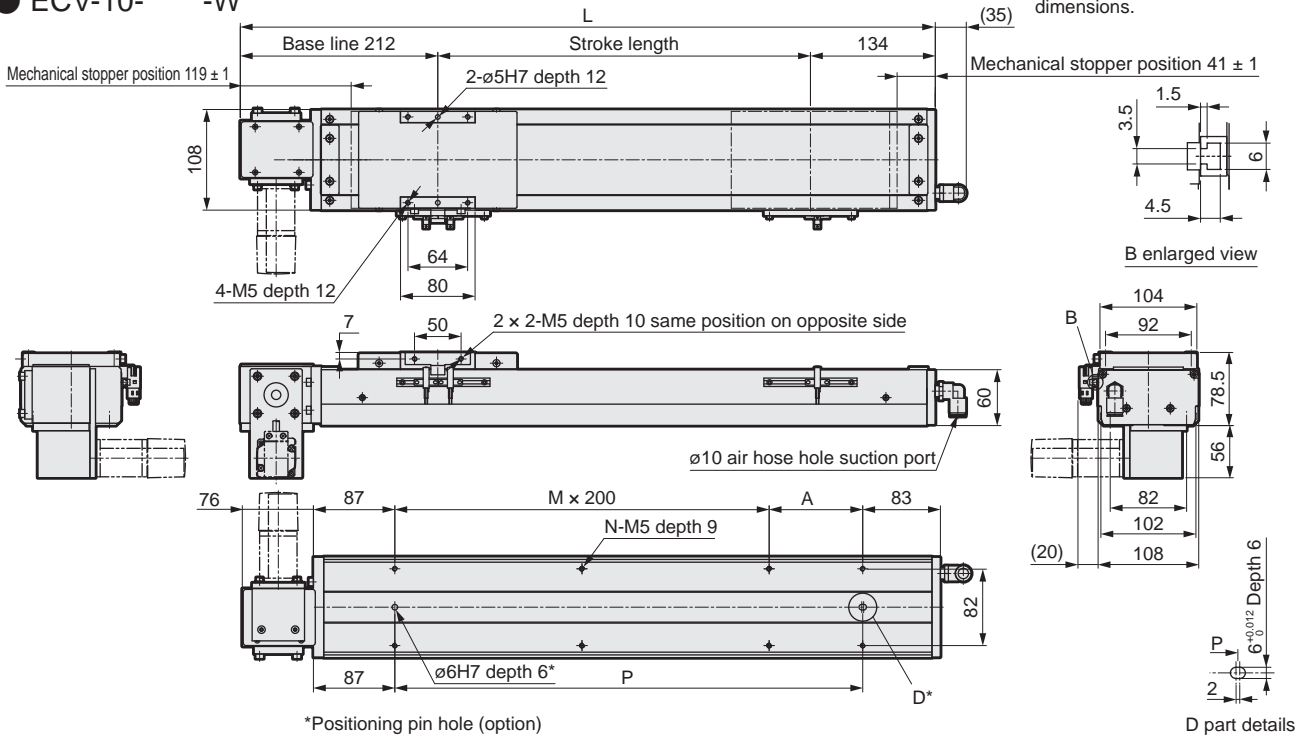
Safety

ECV-10 Series

Dimensions Motor left bottom mounting

● ECV-10-****-W

Refer to page 450 for grease nipple dimensions.



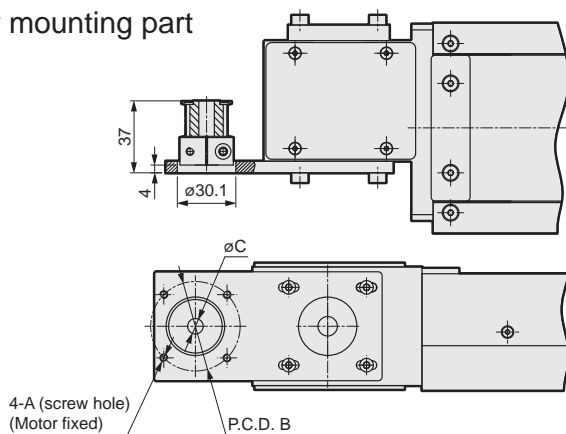
*Positioning pin hole (option)

D part details

Stroke length (mm)	100	150	200	250	300	350	400	450	500	550	600	650	700	750	800	850	900	950	1000	1050	1100	1150	1200	1250	1300
L	446	496	546	596	646	696	746	796	846	896	946	996	1046	1096	1146	1196	1246	1296	1346	1396	1446	1496	1546	1596	1646
A	200	50	100	150	200	50	100	150	200	50	100	150	200	50	100	150	200	50	100	150	200	50	100	150	200
M	0	1	1	1	1	2	2	2	2	3	3	3	3	4	4	4	4	5	5	5	5	6	6	6	6
N	4	6	6	6	6	8	8	8	8	10	10	10	10	12	12	12	12	14	14	14	14	16	16	16	16
P	200	250	300	350	400	450	500	550	600	650	700	750	800	850	900	950	1000	1050	1100	1150	1200	1250	1300	1350	1400
Weight (kg)	8.3	8.7	9.2	9.6	10.0	10.4	10.8	11.3	11.7	12.1	12.5	13.0	13.4	13.8	14.2	14.7	15.1	15.5	15.9	16.3	16.8	17.2	17.6	18.0	18.4

Stroke length (mm)	1350	1400	1450	1500	1550	1600	1650	1700	1750	1800	1850	1900	1950	2000	2050	2100	2150	2200	2250	2300	2350	2400	2450	2500	2550
L	1696	1746	1796	1846	1896	1946	1996	2046	2096	2146	2196	2246	2296	2346	2396	2446	2496	2546	2596	2646	2696	2746	2796	2846	2896
A	50	100	150	200	50	100	150	200	50	100	150	200	50	100	150	200	50	100	150	200	50	100	150	200	50
M	7	7	7	7	8	8	8	8	9	9	9	9	9	10	10	10	10	11	11	11	11	12	12	12	13
N	18	18	18	18	20	20	20	20	22	22	22	22	24	24	24	24	26	26	26	26	28	28	28	28	30
P	1450	1500	1550	1600	1650	1700	1750	1800	1850	1900	1950	2000	2050	2100	2150	2200	2250	2300	2350	2400	2450	2500	2550	2600	2650
Weight (kg)	18.9	19.3	19.7	20.1	20.5	21.0	21.4	21.8	22.2	22.4	23.1	23.5	23.9	24.3	24.7	25.2	25.6	26.0	26.4	26.8	27.3	27.7	28.1	28.5	28.9

Motor mounting part



Mounted motor specification	A	B	C	Motor mounting bolt
M 100 W	M4	ø46	ø8	4-M4 x L12
Y 100 W	M4	ø46	ø8	4-M4 x L12
P 100 W	M3	ø45	ø8	4-M3 x L12
F 100 W	M4	ø46	ø8	4-M4 x L12

List of attachments

[Motor mounting parts]

Mounted motor specification	Timing belt, pulley	Fitting	Motor capacity	Motor mounting bolt	
				Size	Quantity
M	Included at shipment	Included at shipment	100 W	M4	2
Y				M4	2
P				M3	4
F				M4	2

[Origin sensor/Limit sensor]

Manufacturer	Model	Quantity
OMRON Corporation	EE-SX672	3

*Refer to page 448 for sensor specifications.

*Refer to page 452 for fitting details.