



Electric actuator Ball screw drive Slider

# ETS Multi-Axis Series

- Servo motor capacity: 100 W
- 2-axis combination X-Y axes (A type)



## How to order

ETS - 210 A 1 - 040 030 - M N W

**A Combined axes**

210	ETS-06 × ETS-05
-----	-----------------

**B Combination**

A	X-Y axis
---	----------

**C Combination direction**

1 to 4	Confirm the table below.
--------	--------------------------

**D 1st axis stroke**

010	100 mm to
	to (50 mm pitch)
080	800 mm

**E 2nd axis stroke**

005	50 mm to
	to (50 mm pitch)
035	350 mm

**G Brake \*1**

N	None
---	------

**H Origin/Limit sensor (3 pcs × 2 axes) \*2**

N	None
W	Yes

**F Mounted motor specification \*3**

M	Select the mounted motor specification from the table below.
Y	
P	
O	

\*1: The brake targets the 2nd axis.

\*2: The user can adjust the sensor position. (Included at shipment)

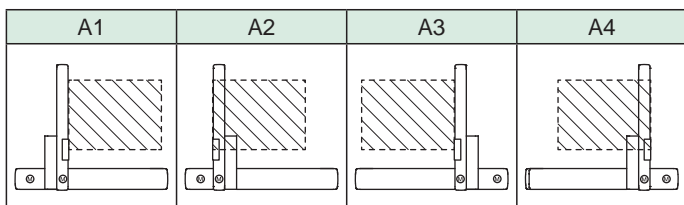
\*3: When "O" is selected for Mounted motor specification, the motor specification code for the 1st and 2nd axes is "M" or "P".

## F Mounted motor specification

Manufacturer	100 W
Mitsubishi Electric Corporation	M
Delta Electronics Co., Ltd.	M
Sanyo Denki Co., Ltd.	M
YASKAWA Electric Corporation	Y
Keyence Corporation	Y
Panasonic Corporation	P
OMRON Corporation	O

\*Refer to page 164 for the motor model No.

## C Combination direction



## C Combination direction and motor mounting direction

Combined axes	Combination	Combination direction	Motor mounting direction and motor capacity			
			1st axis		2nd axis	
			Model	100 W	Model	100 W
ETS-210	A	1	ETS-06	E	ETS-05	R
		2		E		L
		3		E		L
		4		E		R

\*E: Straight mount R: Right side mount L: Left side mount

\*Motor mounting direction is determined by combination direction.

## D E stroke length

Combined axes	Combination	1st axis			2nd axis		
		Model	Screw lead (mm)	Stroke (mm)	Model	Screw lead (mm)	Stroke (mm)
ETS-210	A	ETS-06	10	100 to 800	ETS-05	10	50 to 350

\*The grease nipple is not attached for ETS-05 and 06.

Servo motor compatible

Stepper motor compatible

Safety precautions

# ETS Multi-Axis Series

## Dimensions (X-Y axes)

EBS  
EBR  
ETS  
ETS Multi-Axis  
ECS  
ETV  
ECV  
EKS  
EBS  
EBR  
ETS  
ECS

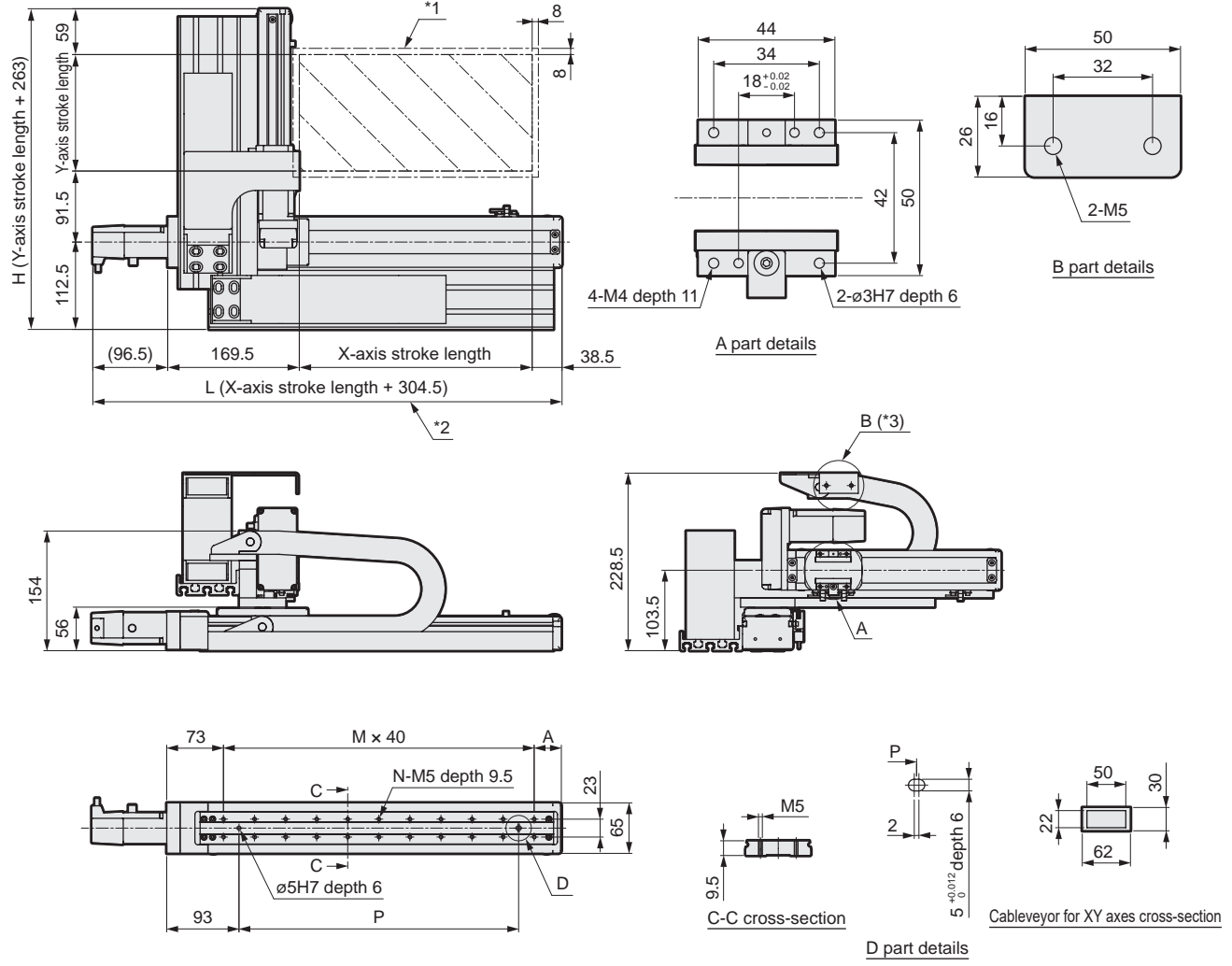
Servo motor compatible

Stepper motor compatible

Safety precautions

### Dimensions

#### ● ETS-210A1



- \*1: Stops within the moving range and this range when returning to origin.
  - \*2: The length of the L-axis changes depending on the manufacturer of the motor installed.
  - \*3: Fix the end of the Y-axis cableveyor on site.
- \*This figure shows the dimensions when combined.

X-axis stroke (mm)	100	150	200	250	300	350	400	450	500	550	600	650	700	750	800
L	404.5	454.5	505.4	554.5	604.5	654.5	704.5	754.5	804.5	854.5	904.5	954.5	1004.5	1054.5	1104.5
A	35	45	55	65	35	45	55	65	35	45	55	65	35	45	55
M	5	6	7	8	9	11	12	13	14	16	17	18	19	21	22
N	12	14	16	18	22	24	26	28	32	34	36	38	42	44	46
P	160	200	240	280	360	400	440	480	560	600	640	680	760	800	840
Max. working speed (mm/s)	500											450	400	350	300

Y-axis stroke (mm)	50	100	150	200	250	300
H	313	363	413	463	513	563
Max. working speed (mm/s)	500					
Max. load capacity (kg)	4.5	3.5	2.5	1.5		

### List of attachments

#### [Motor mounting parts]

Model No.	Mounted motor specification	Motor mounting direction	Mounting parts	Shipment capacity	Motor capacity	Motor mounting bolt	
ETS-06	M	E	Coupling	Assembled at shipment	100 W	M4	2
	Y					M4	2
ETS-05	P	R, L	Timing belt, pulley	Included at shipment		M3	4

\*When "O" is selected for Mounted motor specification, the motor specification code for the 1st and 2nd axes is "M" or "P".

#### [Origin sensor/Limit sensor]

Manufacturer	Model	Quantity
OMRON Corporation	EE-SX672	6

\*Refer to page 156 for sensor specifications.

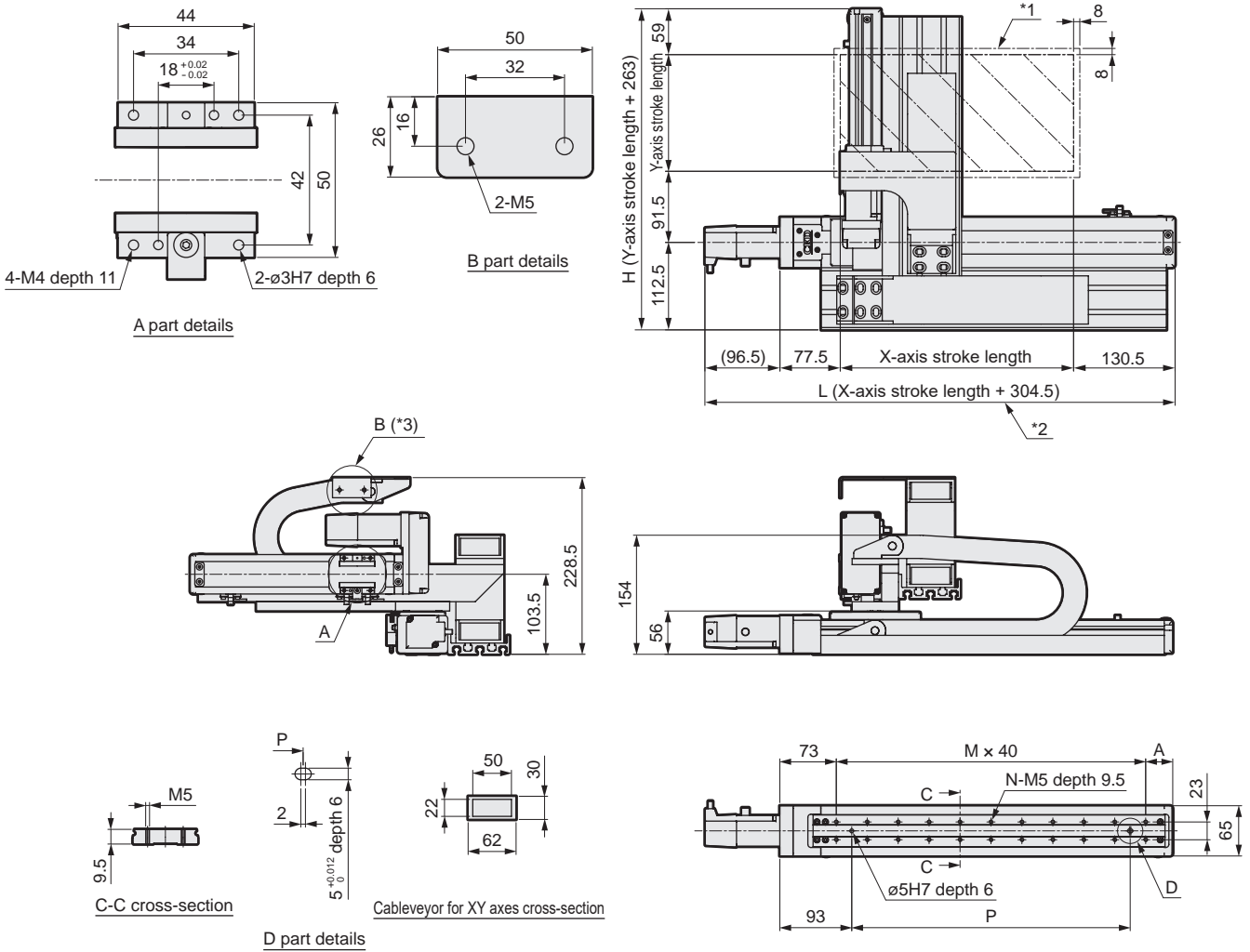
#### [Other attachments for axis combinations]

Cableveyor, axis combination bracket

# ETS Multi-Axis Series

## Dimensions

### ● ETS-210A2



\*1: Stops within the moving range and this range when returning to origin.

\*2: The length of the L-axis changes depending on the manufacturer of the motor installed.

\*3: Fix the end of the Y-axis cableveyor on site.

\*This figure shows the dimensions when combined.

X-axis stroke (mm)	100	150	200	250	300	350	400	450	500	550	600	650	700	750	800
L	404.5	454.5	505.4	554.5	604.5	654.5	704.5	754.5	804.5	854.5	904.5	954.5	1004.5	1054.5	1104.5
A	35	45	55	65	35	45	55	65	35	45	55	65	35	45	55
M	5	6	7	8	9	11	12	13	14	16	17	18	19	21	22
N	12	14	16	18	22	24	26	28	32	34	36	38	42	44	46
P	160	200	240	280	360	400	440	480	560	600	640	680	760	800	840
Max. working speed (mm/s)	500											450	400	350	300
Y-axis stroke (mm)	50	100	150	200	250	300									
H	313	363	413	463	513	563									
Max. working speed (mm/s)	500														
Max. load capacity (kg)	4.5	3.5	2.5		1.5										

## List of attachments

### [Motor mounting parts]

Model No.	Mounted motor specification	Motor mounting direction	Mounting parts	Shipment method	Motor capacity	Motor mounting bolt
ETS-06	M	E	Coupling	Assembled at shipment	100 W	M4
	Y					M4
ETS-05	P	R, L	Timing belt, pulley	Included at shipment	100 W	M3
						M4

\* When "O" is selected for Mounted motor specification, the motor specification code for the 1st and 2nd axes is "M" or "P".

### [Origin sensor/Limit sensor]

Manufacturer	Model	Quantity
OMRON Corporation	EE-SX672	6

\*Refer to page 156 for sensor specifications.

### [Other attachments for axis combinations]

Cableveyor, axis combination bracket

Servo motor compatible

Stepper motor compatible

# ETS Multi-Axis Series

## Dimensions (X-Y axes)

EBS  
EBR  
ETS  
ETS Multi-Axis  
ECS  
ETV  
ECV  
EKS  
EBS  
EBR  
ETS  
ECS

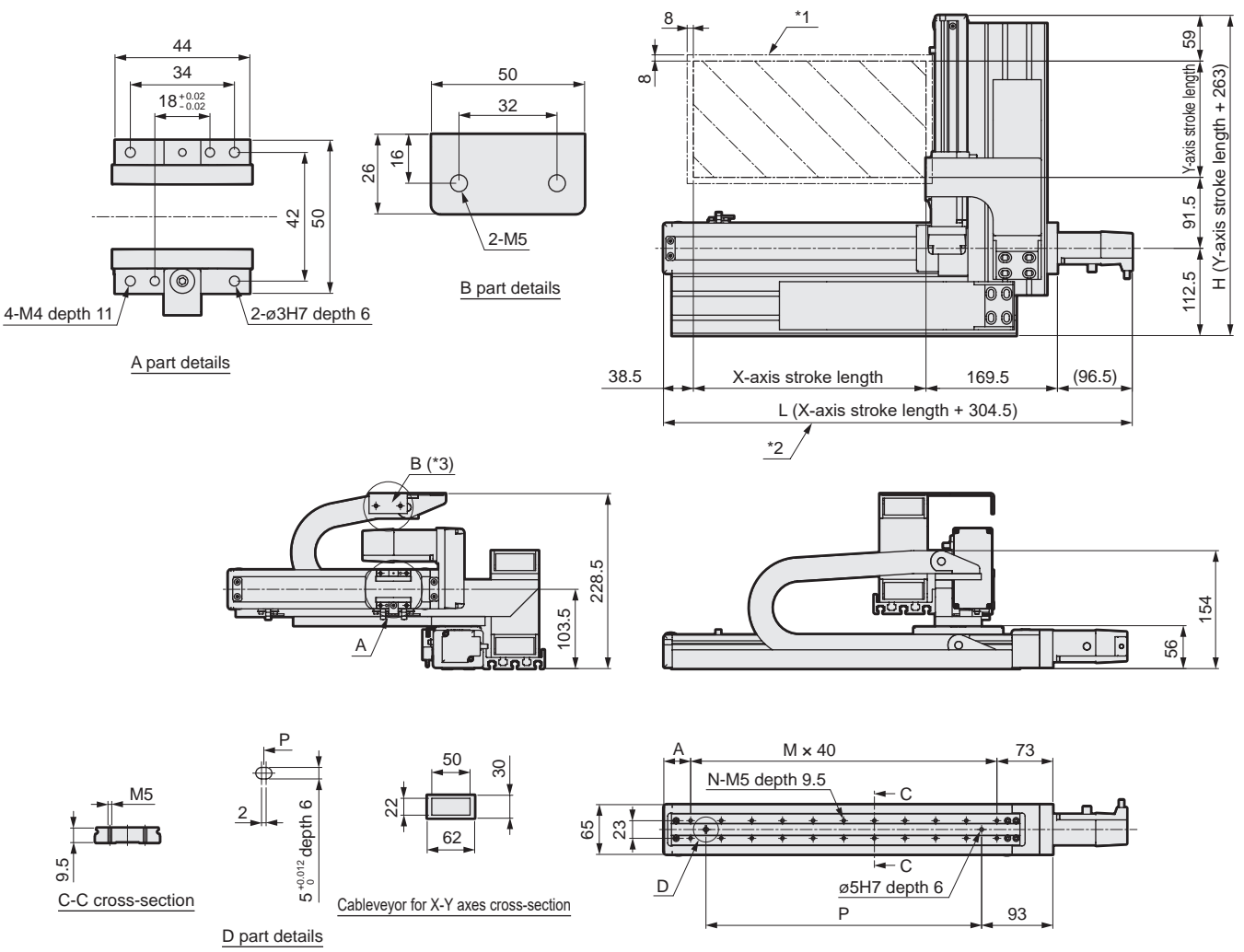
Servo motor compatible

Stepper motor compatible

Safety precautions

### Dimensions

#### ● ETS-210A3



\*1: Stops within the moving range and this range when returning to origin.  
 \*2: The length of the L-axis changes depending on the manufacturer of the motor installed.  
 \*3: Fix the end of the Y-axis cableveyor on site.  
 \*This figure shows the dimensions when combined.

X-axis stroke (mm)	100	150	200	250	300	350	400	450	500	550	600	650	700	750	800
L	404.5	454.5	505.4	554.5	604.5	654.5	704.5	754.5	804.5	854.5	904.5	954.5	1004.5	1054.5	1104.5
A	35	45	55	65	35	45	55	65	35	45	55	65	35	45	55
M	5	6	7	8	9	11	12	13	14	16	17	18	19	21	22
N	12	14	16	18	22	24	26	28	32	34	36	38	42	44	46
P	160	200	240	280	360	400	440	480	560	600	640	680	760	800	840
Max. working speed (mm/s)	500											450	400	350	300

Y-axis stroke (mm)	50	100	150	200	250	300
H	313	363	413	463	513	563
Max. working speed (mm/s)	500					
Max. load capacity (kg)	4.5	3.5	2.5	1.5		

### List of attachments

#### [Motor mounting parts]

Model No.	Mounted motor specification	Motor mounting direction	Mounting parts	Shipment method	Motor capacity	Motor mounting bolt	
ETS-06	M	E	Coupling	Assembled at shipment	100 W	M4	2
	Y					M4	2
ETS-05	P	R, L	Timing belt, pulley	Included at shipment		M3	4

\*When "O" is selected for Mounted motor specification, the motor specification code for the 1st and 2nd axes is "M" or "P".

#### [Origin sensor/Limit sensor]

Manufacturer	Model	Quantity
OMRON Corporation	EE-SX672	6

\*Refer to page 156 for sensor specifications.

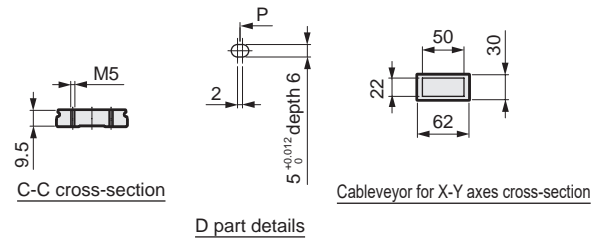
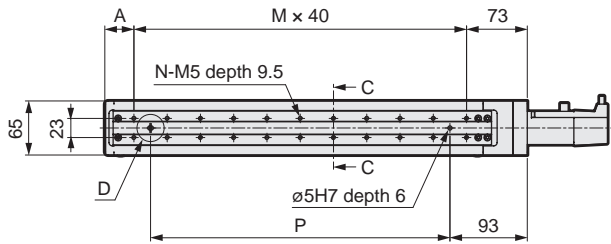
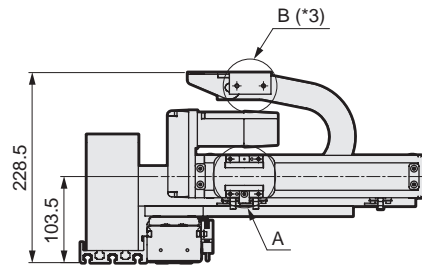
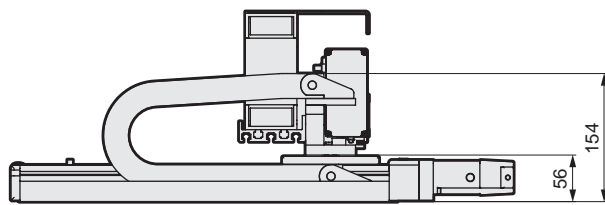
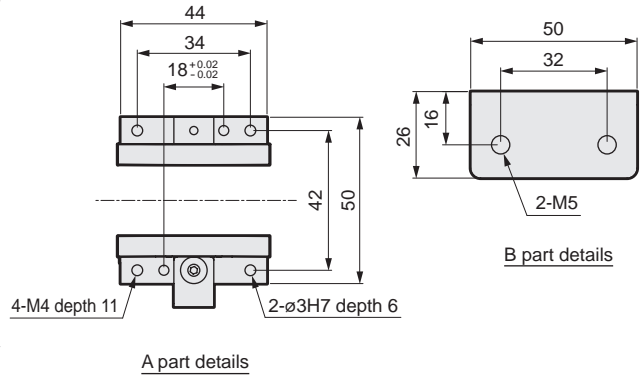
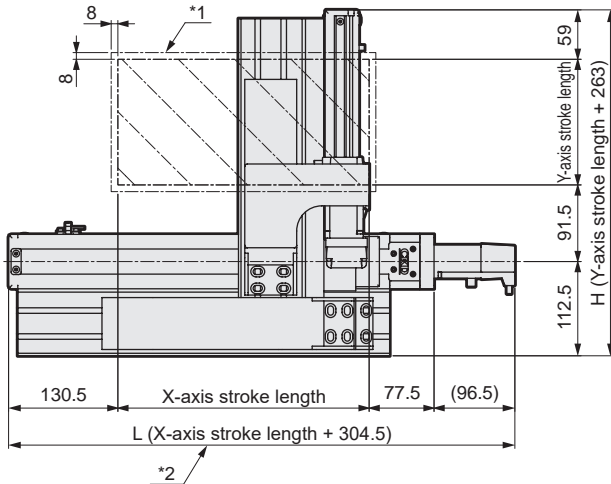
#### [Other attachments for axis combinations]

Cableveyor, axis combination bracket

# ETS Multi-Axis Series

## Dimensions

### ● ETS-210A4



\*1: Stops within the moving range and this range when returning to origin.

\*2: The length of the L-axis changes depending on the manufacturer of the motor installed.

\*3: Fix the end of the Y-axis cableveyor on site.

\*This figure shows the dimensions when combined.

X-axis stroke (mm)	100	150	200	250	300	350	400	450	500	550	600	650	700	750	800
L	404.5	454.5	505.4	554.5	604.5	654.5	704.5	754.5	804.5	854.5	904.5	954.5	1004.5	1054.5	1104.5
A	35	45	55	65	35	45	55	65	35	45	55	65	35	45	55
M	5	6	7	8	9	11	12	13	14	16	17	18	19	21	22
N	12	14	16	18	22	24	26	28	32	34	36	38	42	44	46
P	160	200	240	280	360	400	440	480	560	600	640	680	760	800	840
Max. working speed (mm/s)	500											450	400	350	300
Y-axis stroke (mm)	50	100	150	200	250	300									
H	313	363	413	463	513	563									
Max. working speed (mm/s)	500														
Max. load capacity (kg)	4.5	3.5	2.5		1.5										

## List of attachments

### [Motor mounting parts]

Model No.	Mounted motor specification	Motor mounting direction	Mounting parts	Shipment method	Motor capacity	Motor mounting bolt
ETS-06	M	E	Coupling	Assembled at shipment	100 W	M4 2
ETS-05	Y	R, L	Timing belt, pulley	Included at shipment		M4 2
	P					M3 4

\*When "O" is selected for Mounted motor specification, the motor specification code for the 1st and 2nd axes is "M" or "P".

### [Origin sensor/Limit sensor]

Manufacturer	Model	Quantity
OMRON Corporation	EE-SX672	6

\*Refer to page 156 for sensor specifications.

### [Other attachments for axis combinations]

Cableveyor, axis combination bracket

Servo motor compatible

Stepper motor compatible

# ETS Multi-Axis Series

Dimensions (X-Y axes)

MEMO

EBS	EBR	ETS	<b>ETS Multi-Axis</b>	ECS	ETV	ECV	EKS	EBS	EBR	ETS	ECS
Servo motor compatible								Stepper motor compatible			

Safety precautions



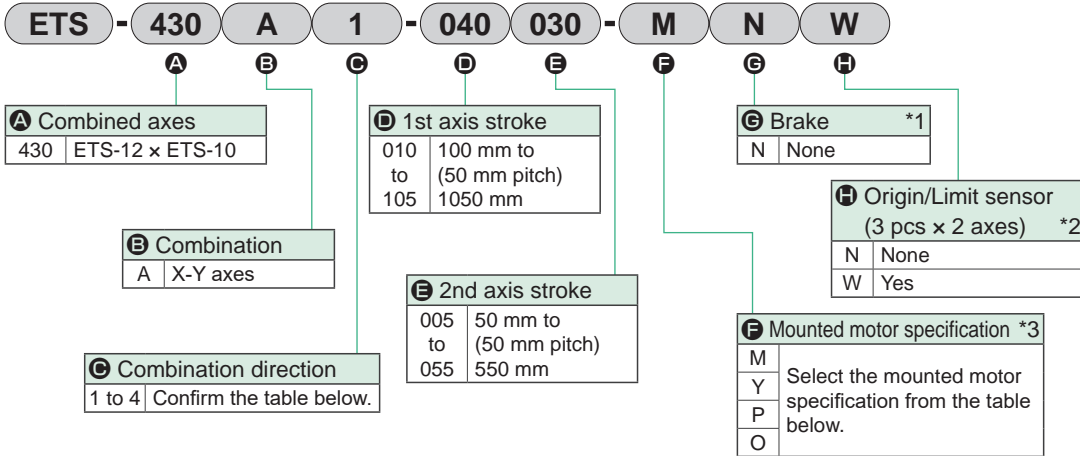
Electric actuator Ball screw drive Slider

# ETS Multi-Axis Series

- Servo motor capacity: 100 W
- 2-axis combination X-Y axes (A type)



## How to order

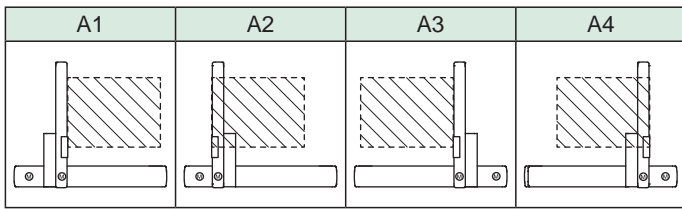


\*1: The brake targets the 2nd axis.

\*2: The user can adjust the sensor position. (Included at shipment)

\*3: When "O" is selected for Mounted motor specification, the motor specification code for the 1st and 2nd axes is "M" or "P".

### C Combination direction



### F Mounted motor specification

Manufacturer	100 W
Mitsubishi Electric Corporation	M
Delta Electronics Co., Ltd.	M
Sanyo Denki Co., Ltd.	M
YASKAWA Electric Corporation	Y
Keyence Corporation	Y
Panasonic Corporation	P
OMRON Corporation	O

\*Refer to page 164 for the motor model No.

### C Combination direction and motor mounting direction

Combined axes	Combination	Combination direction	Motor mounting direction and motor capacity			
			1st axis		2nd axis	
			Model	100 W	Model	100 W
ETS-430	A	1	ETS-12	B	ETS-10	R
		2		B		L
		3		B		L
		4		B		R

\*B: Built-in mount R: Right side mount L: Left side mount

\*Motor mounting direction is determined by combination direction.

\*Contact CKD when using an OMRON motor.

### D/E stroke length

Combined axes	Combination	1st axis			2nd axis		
		Model	Screw lead (mm)	Stroke (mm)	Model	Screw lead (mm)	Stroke (mm)
ETS-430	A	ETS-12	20	100 to 1050	ETS-10	20	50 to 550

### Grease nipple

Combined axes	Combination	Combination direction	1st axis		2nd axis	
			Model	Grease nipple position	Model	Grease nipple position
ETS-430	A	1	ETS-12	L	ETS-10	R
		2		L		L
		3		R		L
		4		R		R

\*R: Right side L: Left side

# ETS Multi-Axis Series

## Specifications (X-Y axes)

EBS  
EBR  
ETS  
ETS Multi-Axis  
ECS  
ETV  
ECV  
EKS  
EBS  
EBR  
ETS  
ECS

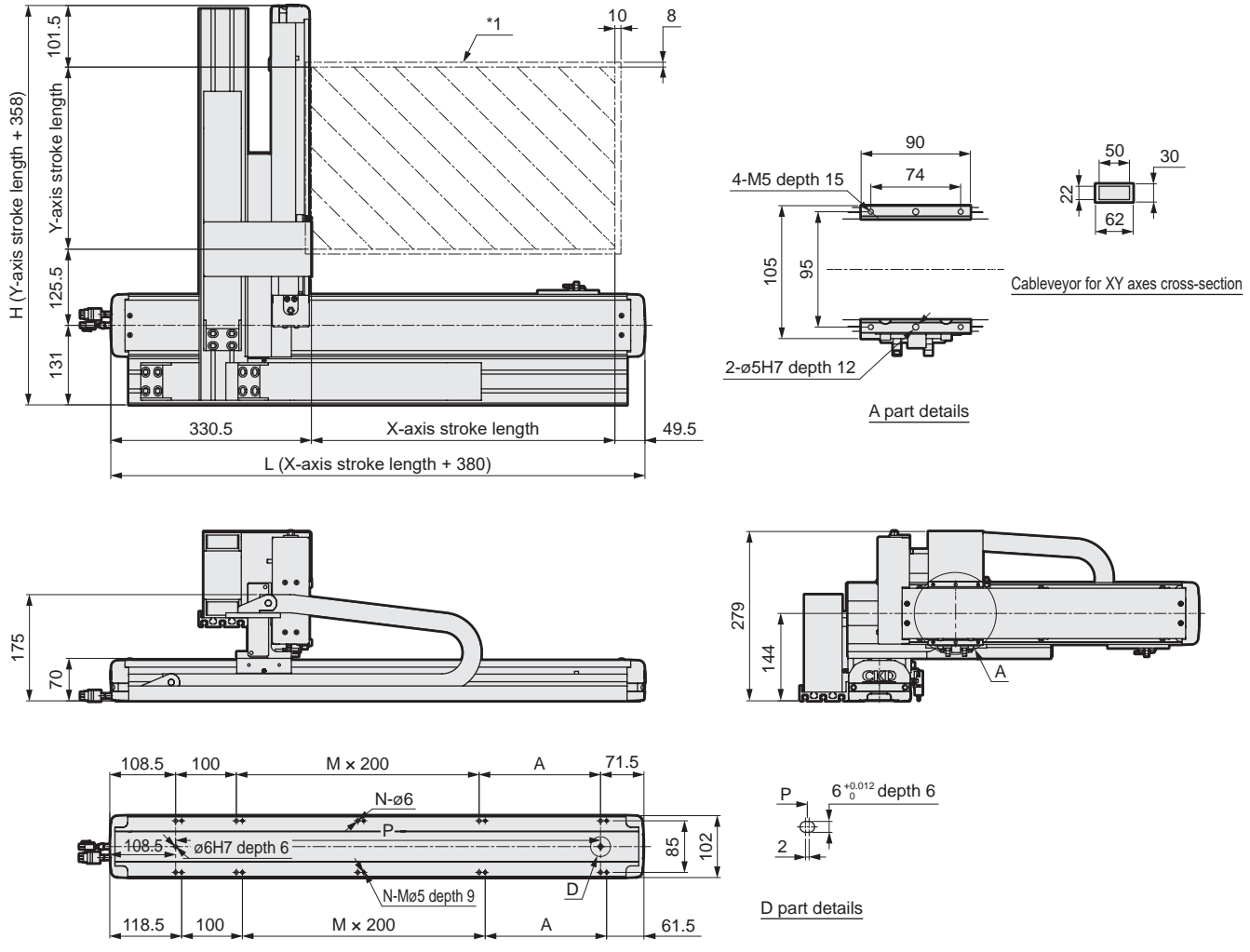
Servo motor compatible

Stepper motor compatible

Safety precautions

### Dimensions

#### ● ETS-430A1



\*1: Stops within the moving range and this range \*when returning to origin.

\*This figure shows the dimensions when combined.

X-axis stroke (mm)	100	150	200	250	300	350	400	450	500	550	600	650	700	750	800	850	900	950	1000	1050	
L	480	530	580	630	680	730	780	830	880	930	980	1030	1080	1130	1180	1230	1280	1330	1380	1430	
A	200	50	100	150	200	50	100	150	200	50	100	150	200	50	100	150	200	50	100	150	
M	0	1	1	1	1	2	2	2	2	3	3	3	3	4	4	4	4	5	5	5	
N	6	8	8	8	8	10	10	10	10	12	12	12	12	14	14	14	14	16	16	16	
P	300	350	400	450	500	550	600	650	700	750	800	850	900	950	1000	1050	1100	1150	1200	1250	
Max. working speed (mm/s)	1000															900	800	700	600	500	400

Y-axis stroke (mm)	50	100	150	200	250	300	350	400	450	500	550
H	408	458	508	558	608	658	708	758	808	858	908
Max. working speed (mm/s)	1000										
Max. load capacity (kg)	8	7	6	5	4	3					

### List of attachments

#### [Motor mounting parts]

Model No.	Mounted motor specification	Motor mounting direction	Mounting parts	Shipment method	Motor capacity	Motor mounting bolt	
ETS-12	M	B	Coupling	Assembled at shipment	100 W	M4	2
	Y					M4	2
ETS-10	P	R, L	Timing belt, pulley	Included at shipment		M3	4

\*When "O" is selected for Mounted motor specification, the motor specification code for the 1st and 2nd axes is "M" or "P".

#### [Origin sensor/Limit sensor]

Manufacturer	Model	Quantity
OMRON Corporation	EE-SX672	6

\*Refer to page 156 for sensor specifications.

#### [Other attachments for axis combinations]

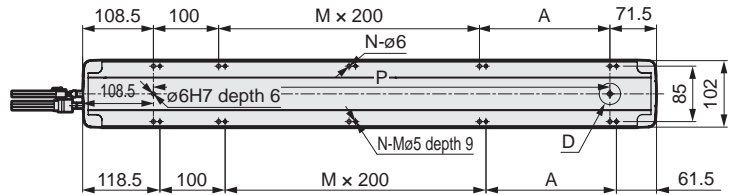
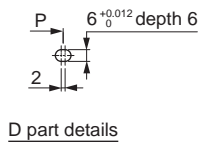
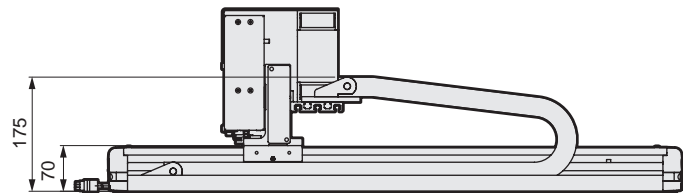
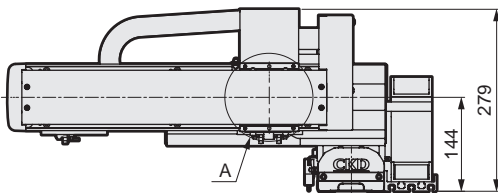
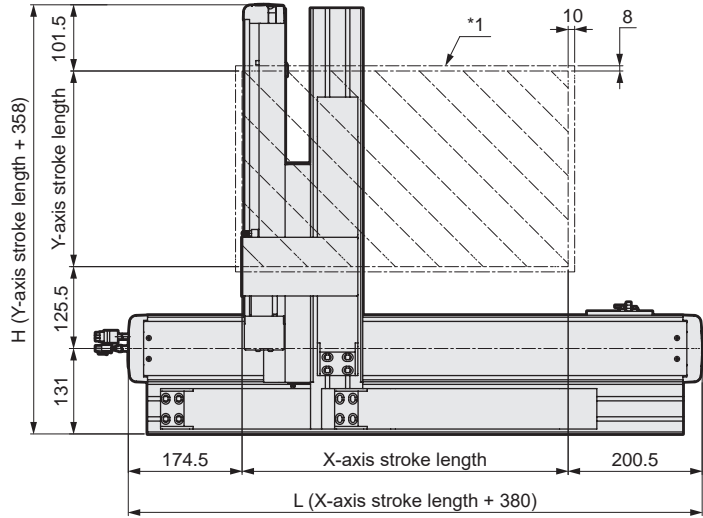
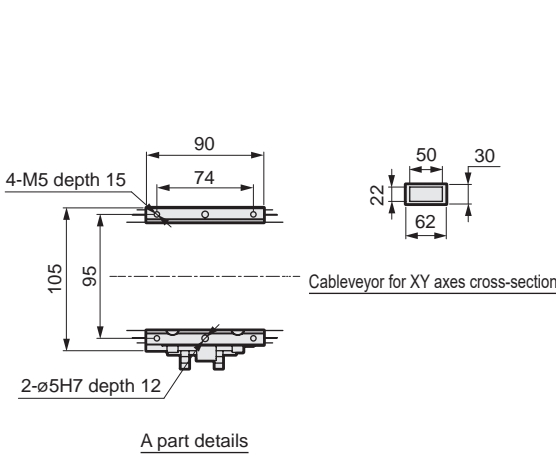
Cableveiyor, axis combination bracket



# ETS Multi-Axis Series

## Dimensions

### ● ETS-430A2



\*1: Stops within the moving range and this range when returning to origin.

\*This figure shows the dimensions when combined.

X-axis stroke (mm)	100	150	200	250	300	350	400	450	500	550	600	650	700	750	800	850	900	950	1000	1050	
L	480	530	580	630	680	730	780	830	880	930	980	1030	1080	1130	1180	1230	1280	1330	1380	1430	
A	200	50	100	150	200	50	100	150	200	50	100	150	200	50	100	150	200	50	100	150	
M	0	1	1	1	1	2	2	2	2	3	3	3	3	4	4	4	4	5	5	5	
N	6	8	8	8	8	10	10	10	10	12	12	12	12	14	14	14	14	16	16	16	
P	300	350	400	450	500	550	600	650	700	750	800	850	900	950	1000	1050	1100	1150	1200	1250	
Max. working speed (mm/s)	1000															900	800	700	600	500	400
Y-axis stroke (mm)	50	100	150	200	250	300	350	400	450	500	550										
H	408	458	508	558	608	658	708	758	808	858	908										
Max. working speed (mm/s)	1000																				
Max. load capacity (kg)	8	7	6	5	4	3															

## List of attachments

### [Motor mounting parts]

Model No.	Mounted motor specification	Motor mounting direction	Mounting parts	Shipment method	Motor capacity	Motor mounting bolt	
ETS-12	M	B	Coupling	Assembled at shipment	100 W	M4	2
	Y					M4	2
ETS-10	P	R, L	Timing belt, pulley	Included at shipment		M3	4

\*When "O" is selected for Mounted motor specification, the motor specification code for the 1st and 2nd axes is "M" or "P".

### [Origin sensor/Limit sensor]

Manufacturer	Model	Quantity
OMRON Corporation	EE-SX672	6

\*Refer to page 156 for sensor specifications.

### [Other attachments for axis combinations]

Cableveyor, axis combination bracket

Servo motor compatible

Stepper motor compatible

EBS

EBR

ETS

ETSMulti-Axis

ECS

ETV

ECV

EKS

EBS

EBR

ETS

ECS

Safety precautions

# ETS Multi-Axis Series

## Dimensions (X-Y axes)

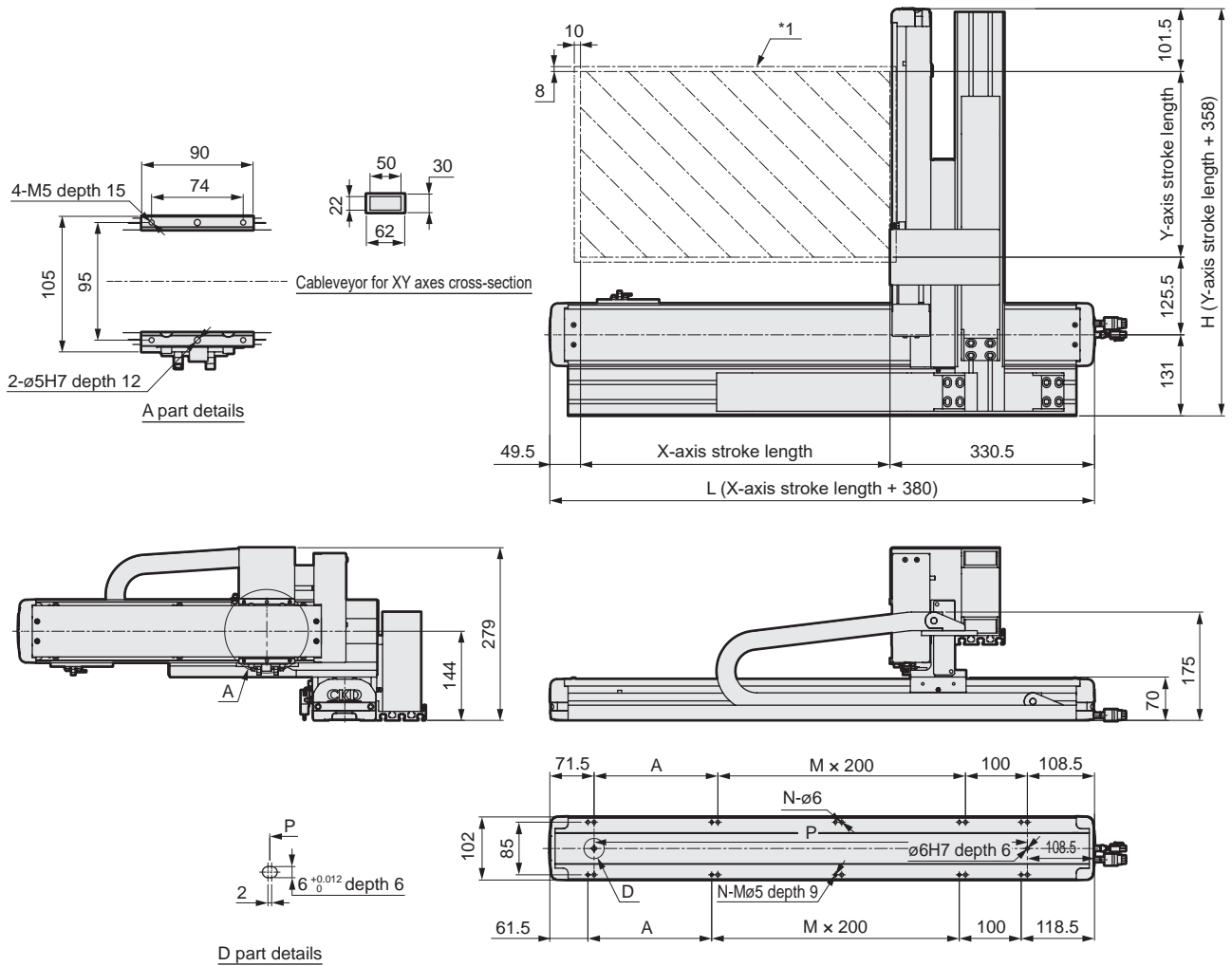
EBS  
EBR  
ETS  
ETS Multi-Axis  
ECS  
ETV  
ECV  
EKS  
EBS  
EBR  
ETS  
ECS

Servo motor compatible  
Stepper motor compatible

Safety  
Precautions

### Dimensions

#### ● ETS-430A3



\*1: Stops within the moving range and this range when returning to origin.

\*This figure shows the dimensions when combined.

X-axis stroke (mm)	100	150	200	250	300	350	400	450	500	550	600	650	700	750	800	850	900	950	1000	1050
L	480	530	580	630	680	730	780	830	880	930	980	1030	1080	1130	1180	1230	1280	1330	1380	1430
A	200	50	100	150	200	50	100	150	200	50	100	150	200	50	100	150	200	50	100	150
M	0	1	1	1	1	2	2	2	2	3	3	3	3	4	4	4	4	5	5	5
N	6	8	8	8	8	10	10	10	10	12	12	12	12	14	14	14	14	16	16	16
P	300	350	400	450	500	550	600	650	700	750	800	850	900	950	1000	1050	1100	1150	1200	1250
Max. working speed (mm/s)	1000														900	800	700	600	500	400

Y-axis stroke (mm)	50	100	150	200	250	300	350	400	450	500	550
H	408	458	508	558	608	658	708	758	808	858	908
Max. working speed (mm/s)	1000										
Max. load capacity (kg)	8	7	6	5	4	3					

### List of attachments

#### [Motor mounting parts]

Model No.	Mounted motor specification	Motor mounting direction	Mounting parts	Shipment method	Motor capacity	Motor mounting bolt	
ETS-12	M	B	Coupling	Assembled at shipment	100 W	M4	2
	Y					M4	2
ETS-10	P	R, L	Timing belt, pulley	Included at shipment		M3	4

\*When "O" is selected for Mounted motor specification, the motor specification code for the 1st and 2nd axes is "M" or "P".

#### [Origin sensor/Limit sensor]

Manufacturer	Model	Quantity
OMRON Corporation	EE-SX672	6

\*Refer to page 156 for sensor specifications.

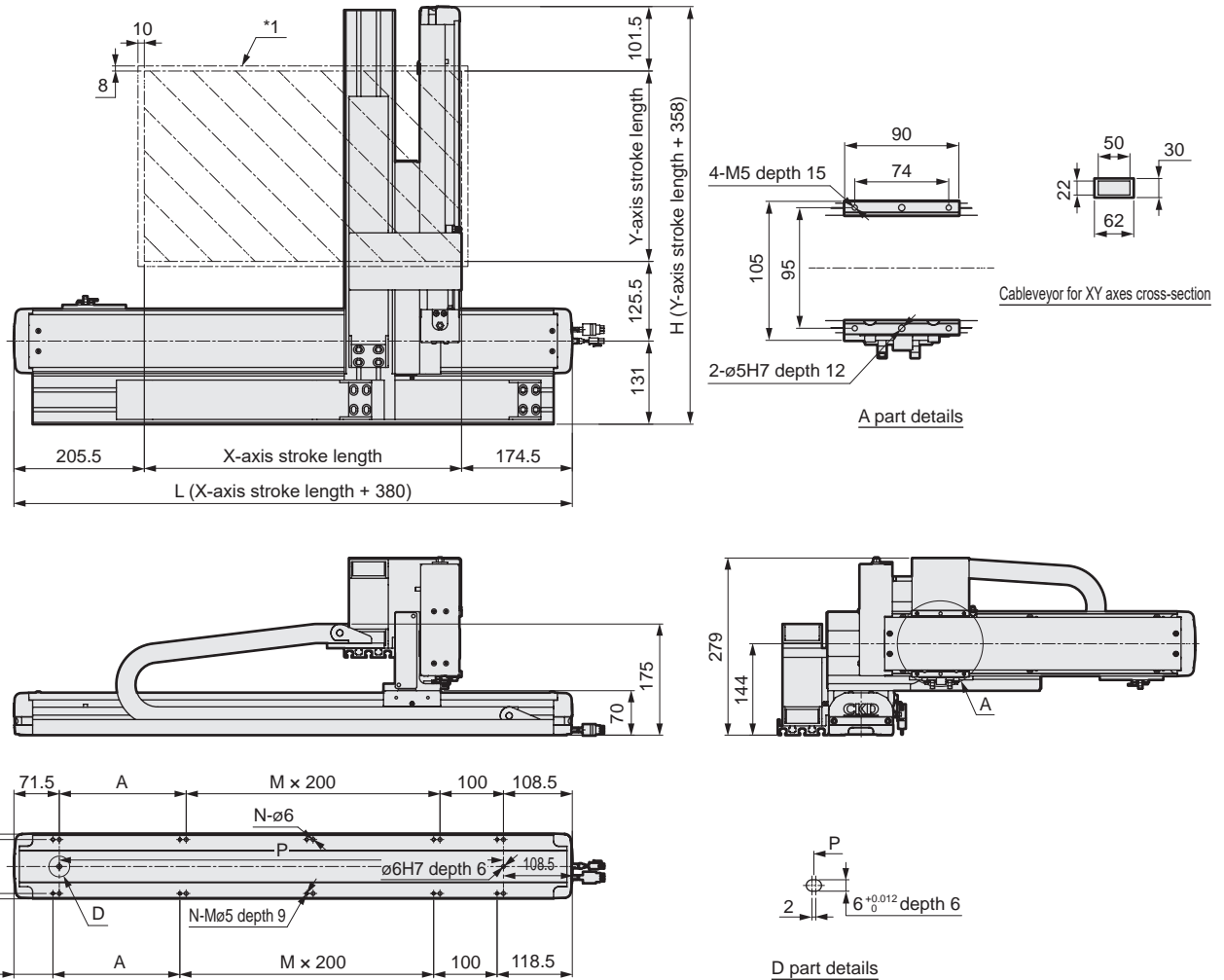
#### [Other attachments for axis combinations]

Cableveyor, axis combination bracket

# ETS Multi-Axis Series

## Dimensions

### ● ETS-430A4



\*1: Stops within the moving range and this range when returning to origin.

\*This figure shows the dimensions when combined.

X-axis stroke (mm)	100	150	200	250	300	350	400	450	500	550	600	650	700	750	800	850	900	950	1000	1050	
L	480	530	580	630	680	730	780	830	880	930	980	1030	1080	1130	1180	1230	1280	1330	1380	1430	
A	200	50	100	150	200	50	100	150	200	50	100	150	200	50	100	150	200	50	100	150	
M	0	1	1	1	1	2	2	2	2	3	3	3	3	4	4	4	4	5	5	5	
N	6	8	8	8	8	10	10	10	10	12	12	12	12	14	14	14	14	16	16	16	
P	300	350	400	450	500	550	600	650	700	750	800	850	900	950	1000	1050	1100	1150	1200	1250	
Max. working speed (mm/s)	1000															900	800	700	600	500	400
Y-axis stroke (mm)	50	100	150	200	250	300	350	400	450	500	550										
H	408	458	508	558	608	658	708	758	808	858	908										
Max. working speed (mm/s)	1000																				
Max. load capacity (kg)	8	7	6	5	4	3															

## List of attachments

### [Motor mounting parts]

Model No.	Mounted motor specification	Motor mounting direction	Mounting parts	Shipment method	Motor capacity	Motor mounting bolt	
ETS-12	M	B	Coupling	Assembled at shipment	100 W	M4	2
	Y					M4	2
ETS-10	P	R, L	Timing belt, pulley	Included at shipment		M3	4

\*When "O" is selected for Mounted motor specification, the motor specification code for the 1st and 2nd axes is "M" or "P".

### [Origin sensor/Limit sensor]

Manufacturer	Model	Quantity
OMRON Corporation	EE-SX672	6

\*Refer to page 156 for sensor specifications.

### [Other attachments for axis combinations]

Cableveyor, axis combination bracket

Servo motor compatible

Stepper motor compatible

Safety precautions

# ETS Multi-Axis Series

Dimensions (X-Y axes)

MEMO

Servo motor compatible			
EBS	EBR	ETS	ETS Multi-Axis
ECS	ETV	ECV	EKS
Stepper motor compatible			
EBS	EBR	ETS	ECS

Safety precautions



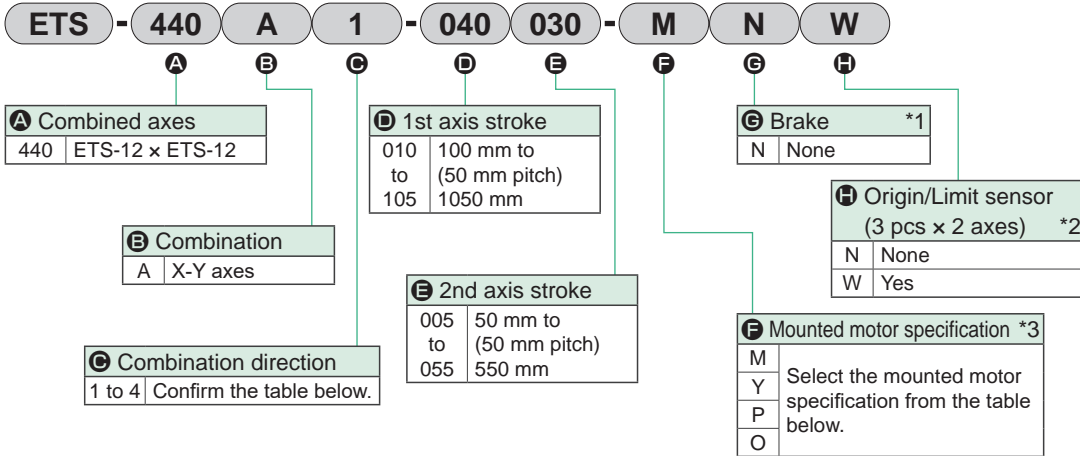
Electric actuator Ball screw drive Slider

# ETS Multi-Axis Series

- Servo motor capacity: 100 W
- 2-axis combination X-Y axes (A type)



## How to order

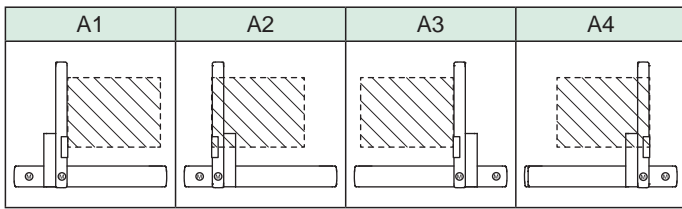


\*1: The brake targets the 2nd axis.

\*2: The user can adjust the sensor position. (Included at shipment)

\*3: When "O" is selected for Mounted motor specification, the motor specification code for the 1st and 2nd axes is "M" or "P".

### C Combination direction



### F Mounted motor specification

Manufacturer	100 W
Mitsubishi Electric Corporation	M
Delta Electronics Co., Ltd.	M
Sanyo Denki Co., Ltd.	M
YASKAWA Electric Corporation	Y
Keyence Corporation	Y
Panasonic Corporation	P
OMRON Corporation	O

\*Refer to page 164 for the recommended motor model No.

### C Combination direction and motor mounting direction

Combined axes	Combination	Combination direction	Motor mounting direction and motor capacity			
			1st axis		2nd axis	
			Model	100 W	Model	100 W
ETS-440	A	1	ETS-12	B	ETS-12	R
		2		B		L
		3		B		L
		4		B		R

\*B: Built-in mount R: Right side mount L: Left side mount

\*Motor mounting direction is determined by combination direction.

\*Contact CKD when using an OMRON motor.

### D/E stroke length

Combined axes	Combination	1st axis			2nd axis		
		Model	Screw lead (mm)	Stroke (mm)	Model	Screw lead (mm)	Stroke (mm)
ETS-440	A	ETS-12	20	100 to 1050	ETS-12	20	50 to 550

### Grease nipple

Combined axes	Combination	Combination direction	1st axis		2nd axis	
			Model	Grease nipple position	Model	Grease nipple position
ETS-440	A	1	ETS-12	L	ETS-12	R
		2		L		L
		3		R		L
		4		R		R

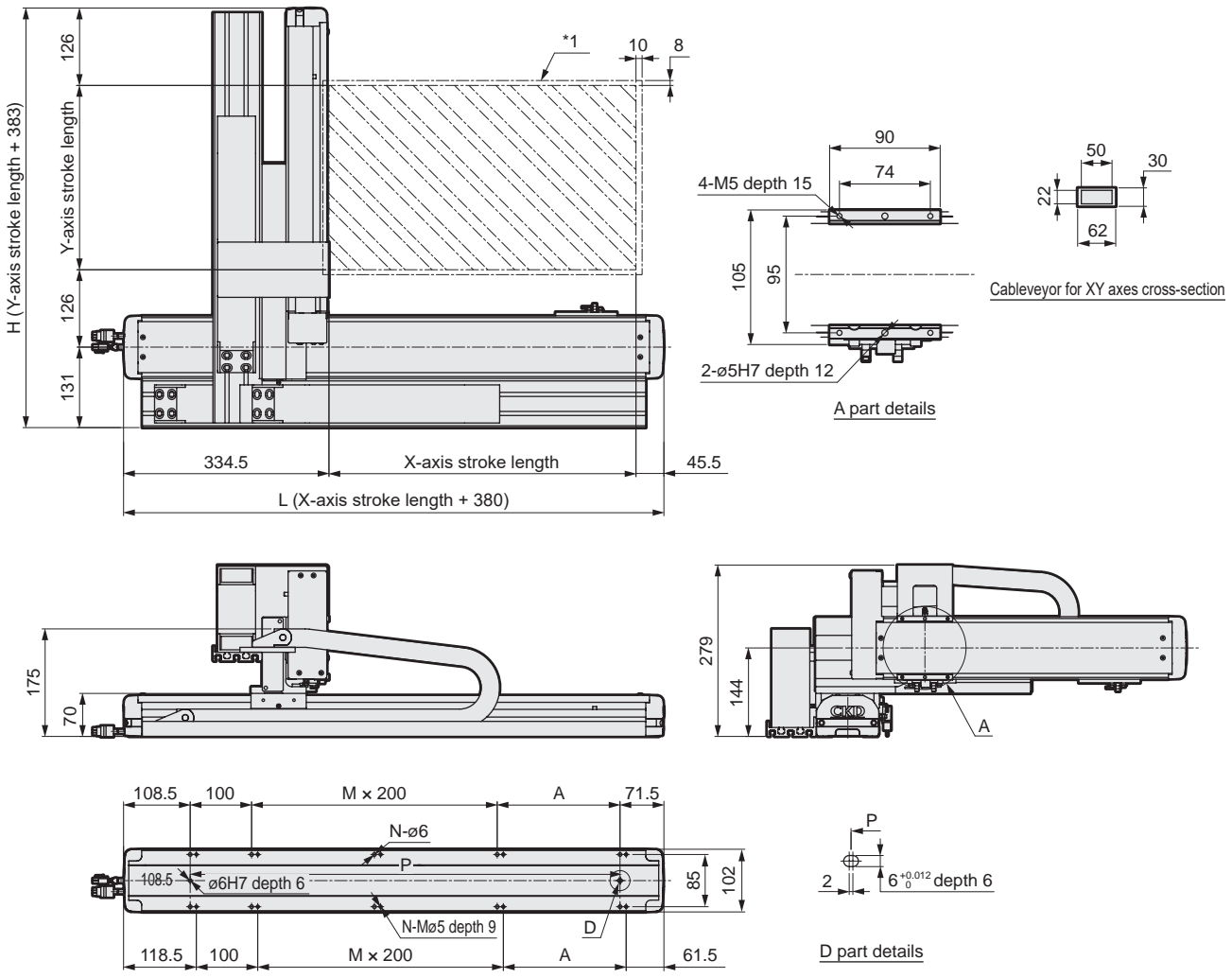
\*R: Right side L: Left side

EBS  
EBR  
ETS  
ETS Multi-Axis  
ECS  
ETV  
ECV  
EKS  
EBS  
EBR  
ETS  
ECS

Servo motor compatible  
Stepper motor compatible  
Safety Precautions

## Dimensions

### ● ETS-440A1



\*1: Stops within the moving range and this range when returning to origin.

\*This figure shows the dimensions when combined.

X-axis stroke (mm)	100	150	200	250	300	350	400	450	500	550	600	650	700	750	800	850	900	950	1000	1050	
L	480	530	580	630	680	730	780	830	880	930	980	1030	1080	1130	1180	1230	1280	1330	1380	1430	
A	200	50	100	150	200	50	100	150	200	50	100	150	200	50	100	150	200	50	100	150	
M	0	1	1	1	1	2	2	2	2	3	3	3	3	4	4	4	4	5	5	5	
N	6	8	8	8	8	10	10	10	10	12	12	12	12	14	14	14	14	16	16	16	
P	300	350	400	450	500	550	600	650	700	750	800	850	900	950	1000	1050	1100	1150	1200	1250	
Max. working speed (mm/s)	1000															900	800	700	600	500	400

Y-axis stroke (mm)	50	100	150	200	250	300	350	400	450	500	550
H	433	483	533	583	633	683	733	783	833	883	933
Max. working speed (mm/s)	1000										
Max. load capacity (kg)	12	11	10	9	8	7					

## List of attachments

### [Motor mounting parts]

Model No.	Mounted motor specification	Motor mounting direction	Mounting parts	Shipment method	Motor capacity	Motor mounting bolt
ETS-12	M	B	Coupling	Assembled at shipment	100 W	M4
	Y		Timing belt, pulley	Included at shipment		M4
	P	R, L				M3

\*When "O" is selected for Mounted motor specification, the motor specification code for the 1st and 2nd axes is "M" or "P".

### [Origin sensor/Limit sensor]

Manufacturer	Model	Quantity
OMRON Corporation	EE-SX672	6

\*Refer to page 156 for sensor specifications.

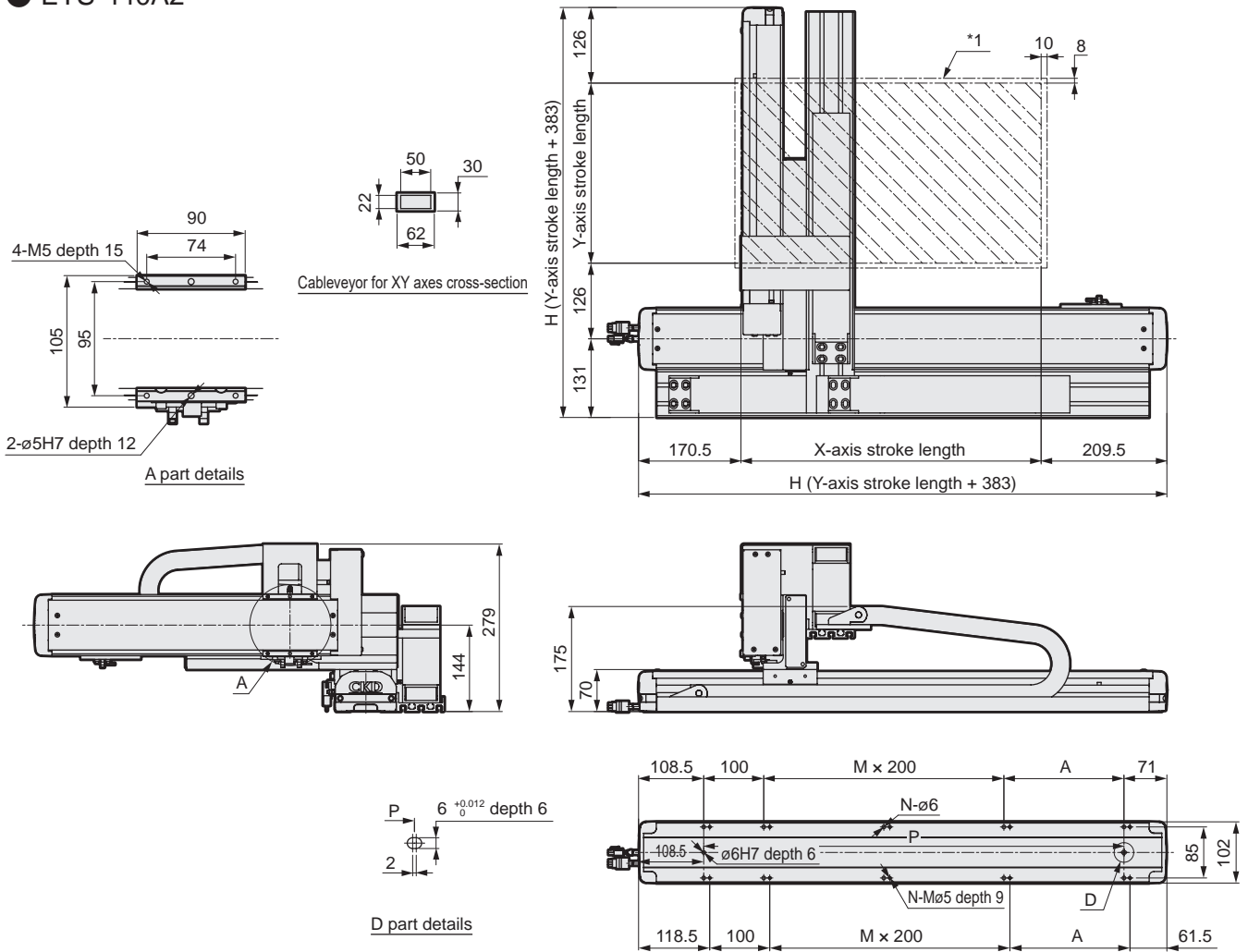
### [Other attachments for axis combinations]

Cableveyor, axis combination bracket

# ETS Multi-Axis Series

## Dimensions

### ● ETS-440A2



\*1: Stops within the moving range and this range when returning to origin.

\*This figure shows the dimensions when combined.

X-axis stroke (mm)	100	150	200	250	300	350	400	450	500	550	600	650	700	750	800	850	900	950	1000	1050	
L	480	530	580	630	680	730	780	830	880	930	980	1030	1080	1130	1180	1230	1280	1330	1380	1430	
A	200	50	100	150	200	50	100	150	200	50	100	150	200	50	100	150	200	50	100	150	
M	0	1	1	1	1	2	2	2	2	3	3	3	3	4	4	4	4	5	5	5	
N	6	8	8	8	8	10	10	10	10	12	12	12	12	14	14	14	14	16	16	16	
P	300	350	400	450	500	550	600	650	700	750	800	850	900	950	1000	1050	1100	1150	1200	1250	
Max. working speed (mm/s)	1000															900	800	700	600	500	400
Y-axis stroke (mm)	50	100	150	200	250	300	350	400	450	500	550										
H	433	483	533	583	633	683	733	783	833	883	933										
Max. working speed (mm/s)	1000																				
Max. load capacity (kg)	12	11	10	9	8	7															

## List of attachments

### [Motor mounting parts]

Model No.	Mounted motor specification	Motor mounting direction	Mounting parts	Shipment method	Motor capacity	Motor mounting bolt	
ETS-12	M	B	Coupling	Assembled at shipment	100 W	M4	2
	Y					M4	2
	P	R, L	Timing belt, pulley	Included at shipment		M3	4

\*When "O" is selected for Mounted motor specification, the motor specification code for the 1st and 2nd axes is "M" or "P".

### [Origin sensor/Limit sensor]

Manufacturer	Model	Quantity
OMRON Corporation	EE-SX672	6

\*Refer to page 156 for sensor specifications.

### [Other attachments for axis combinations]

Cableveyor, axis combination bracket

Servo motor compatible

Stepper motor compatible

Safety precautions

# ETS Multi-Axis Series

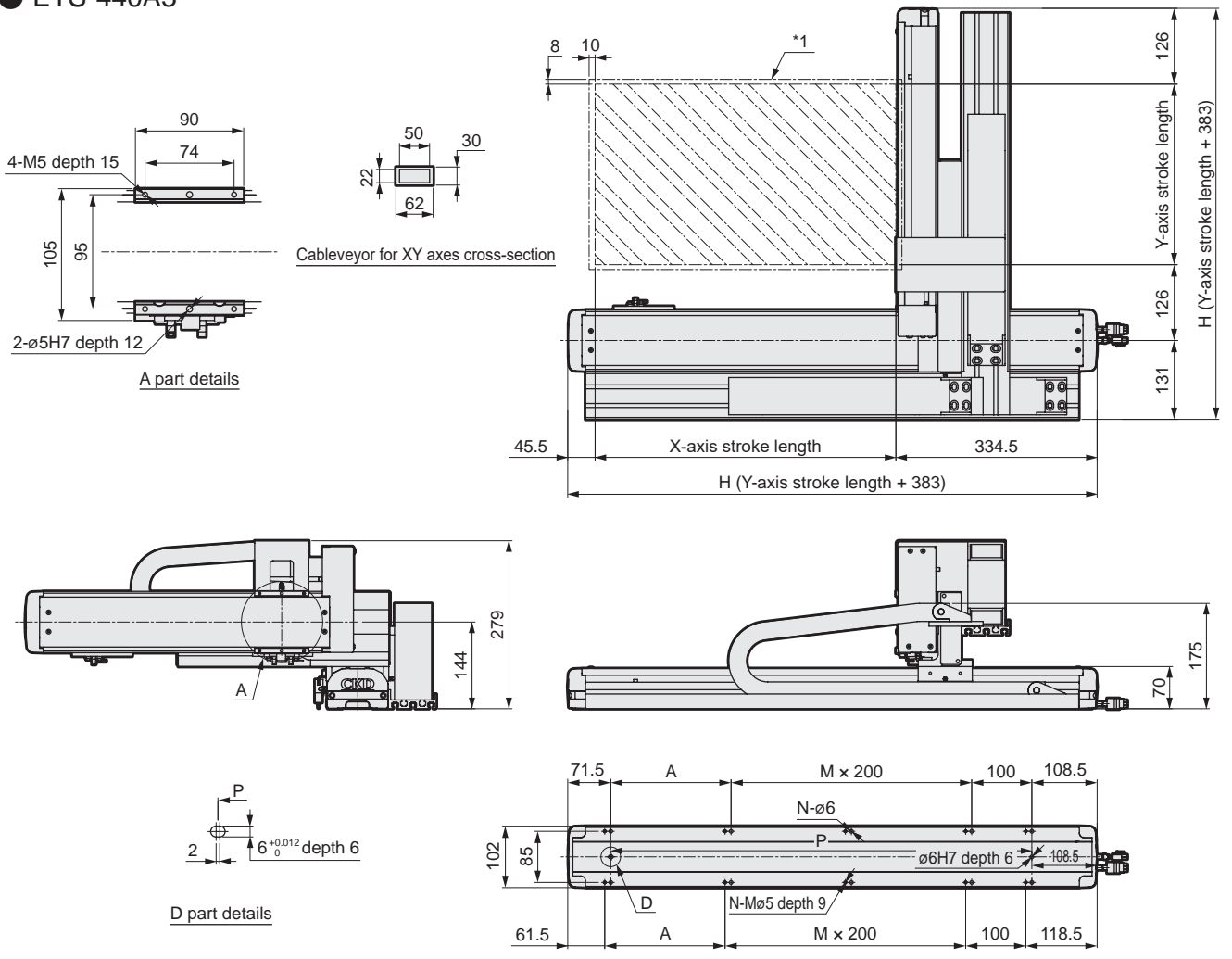
## Dimensions (X-Y axes)

EBS  
EBR  
ETS  
ETS Multi-Axis  
ECS  
ETV  
ECV  
EKS  
EBS  
EBR  
ETS  
ECS

Servo motor compatible  
Stepper motor compatible  
Safety precautions

### Dimensions

#### ● ETS-440A3



\*1: Stops within the moving range and this range when returning to origin.

\*This figure shows the dimensions when combined.

X-axis stroke (mm)	100	150	200	250	300	350	400	450	500	550	600	650	700	750	800	850	900	950	1000	1050	
L	480	530	580	630	680	730	780	830	880	930	980	1030	1080	1130	1180	1230	1280	1330	1380	1430	
A	200	50	100	150	200	50	100	150	200	50	100	150	200	50	100	150	200	50	100	150	
M	0	1	1	1	1	2	2	2	2	3	3	3	3	4	4	4	4	5	5	5	
N	6	8	8	8	8	10	10	10	10	12	12	12	12	14	14	14	14	16	16	16	
P	300	350	400	450	500	550	600	650	700	750	800	850	900	950	1000	1050	1100	1150	1200	1250	
Max. working speed (mm/s)	1000															900	800	700	600	500	400

Y-axis stroke (mm)	50	100	150	200	250	300	350	400	450	500	550
H	433	483	533	583	633	683	733	783	833	883	933
Max. working speed (mm/s)	1000										
Max. load capacity (kg)	12	11	10	9	8	7					

### List of attachments

#### [Motor mounting parts]

Model No.	Mounted motor specification	Motor mounting direction	Mounting parts	Shipment method	Motor capacity	Motor mounting bolt	
ETS-12	M	B	Coupling	Assembled at shipment	100 W	M4	2
	Y					M4	2
	P	R, L	Timing belt, pulley	Included at shipment		M3	4

\*When "O" is selected for Mounted motor specification, the motor specification code for the 1st and 2nd axes is "M" or "P".

#### [Origin sensor/Limit sensor]

Manufacturer	Model	Quantity
OMRON Corporation	EE-SX672	6

\*Refer to page 156 for sensor specifications.

#### [Other attachments for axis combinations]

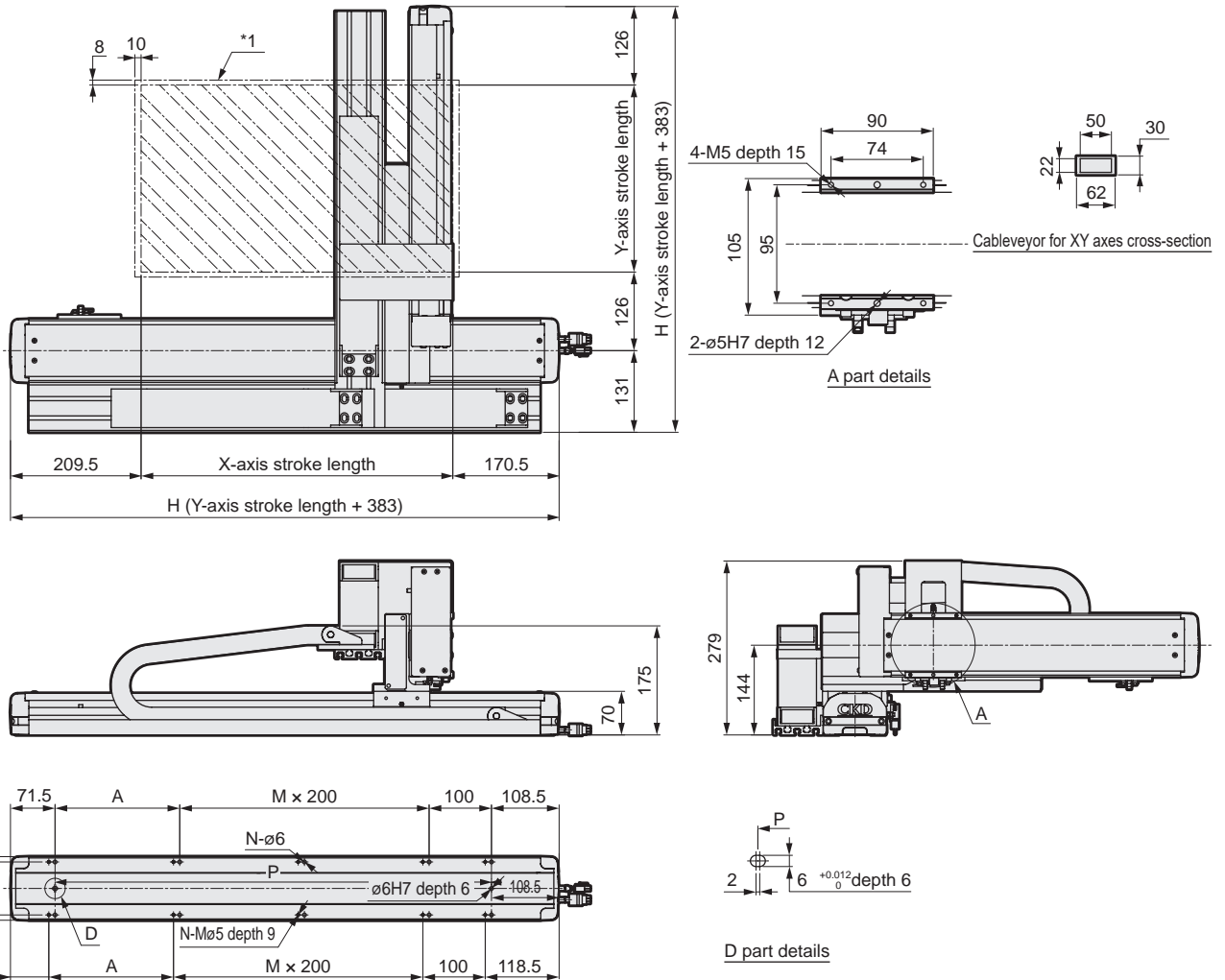
Cableveyor, axis combination bracket



# ETS Multi-Axis Series

## Dimensions

### ● ETS-440A4



\*1: Stops within the moving range and this range when returning to origin.

\*This figure shows the dimensions when combined.

X-axis stroke (mm)	100	150	200	250	300	350	400	450	500	550	600	650	700	750	800	850	900	950	1000	1050	
L	480	530	580	630	680	730	780	830	880	930	980	1030	1080	1130	1180	1230	1280	1330	1380	1430	
A	200	50	100	150	200	50	100	150	200	50	100	150	200	50	100	150	200	50	100	150	
M	0	1	1	1	1	2	2	2	2	3	3	3	3	4	4	4	4	5	5	5	
N	6	8	8	8	8	10	10	10	10	12	12	12	12	14	14	14	14	16	16	16	
P	300	350	400	450	500	550	600	650	700	750	800	850	900	950	1000	1050	1100	1150	1200	1250	
Max. working speed (mm/s)	1000															900	800	700	600	500	400
Y-axis stroke (mm)	50	100	150	200	250	300	350	400	450	500	550										
H	433	483	533	583	633	683	733	783	833	883	933										
Max. working speed (mm/s)	1000																				
Max. load capacity (kg)	12	11	10	9	8	7															

## List of attachments

### [Motor mounting parts]

Model No.	Mounted motor specification	Motor mounting direction	Mounting parts	Shipment method	Motor capacity	Motor mounting bolt	
ETS-12	M	B	Coupling	Assembled at shipment	100 W	M4	2
	Y					M4	2
	P	R, L	Timing belt, pulley	Included at shipment		M3	4

\*When "O" is selected for Mounted motor specification, the motor specification code for the 1st and 2nd axes is "M" or "P".

### [Origin sensor/Limit sensor]

Manufacturer	Model	Quantity
OMRON Corporation	EE-SX672	6

\*Refer to page 156 for sensor specifications.

### [Other attachments for axis combinations]

Cableveyor, axis combination bracket

# ETS Multi-Axis Series

Dimensions (X-Y axes)

MEMO

EBS	EBR	ETS	<b>ETS Multi-Axis</b>	ECS	ETV	ECV	EKS	EBS	EBR	ETS	ECS
Servo motor compatible								Stepper motor compatible			

Safety precautions