

There's a reason why they keep choosing us. Ready-to-Use ABSODEX

ABSODEX is a rotary actuator that enables high-precision positioning by simply mounting a load directly. Since the index table equipment can be easily created, design and assembly hours are reduced, simplifying production facilities and increasing production efficiency are achieved.

High precision

It can be used for assembly of fine electronic parts.

High torque

In addition to the lightweight aluminum table, we can directly mount large index tables exceeding 2 m in diameter.

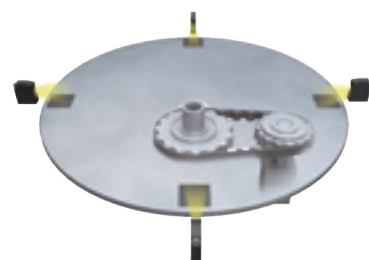
Built-in rotation position detector

Built-in resolver of position detector with excellent environmental resistance. Since it is battery-less absolute specification, origin return is eliminated and the angle on the table is recognized.

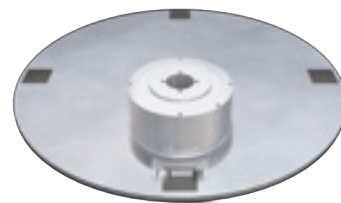
Built-in bearing

Highly rigid bearing is built into the unit. Resistant to moment, suitable for press fitting work.

Advantages of ABSODEX



Motor + Timing belt



ABSODEX

- Reduced number of parts
- No backlash
- Space saving
- Maintenance-free
- Sensorless
- Reduced design processes
- Silent
- Improved environmental friendliness

Examples of applications

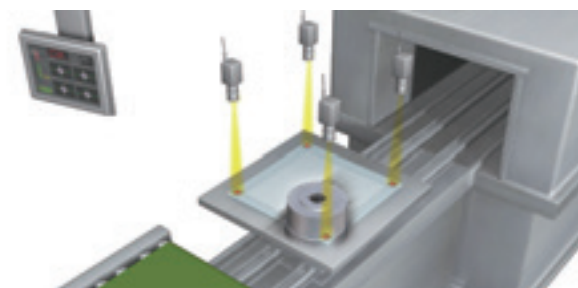
Assembly, inspection

The table is operated in equal divisions and the work is performed at each position.



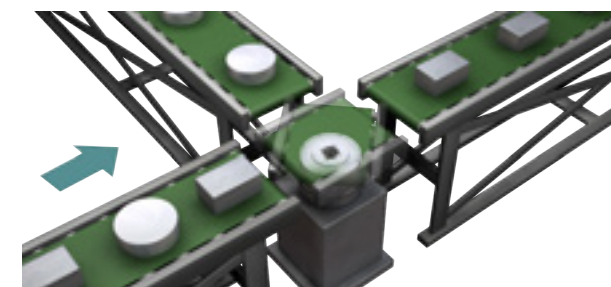
Glass substrate alignment

Monitors the workpiece and adjusts the fine angle. Settings can be changed to high resolution (approx. 2 million pulses).



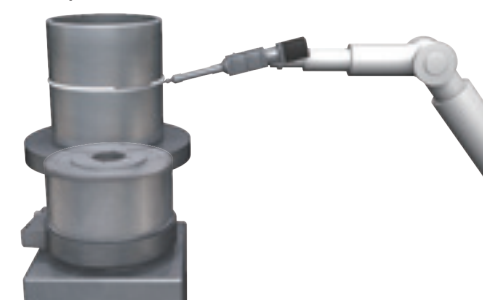
Conveyor transport direction conversion

Changes direction of workpieces flowing on the conveyor to match the type of product. *Pay attention to the * rigidity. A constant strength is required.



Adhesive application

Apply the adhesive by rotating the workpiece once at a constant speed.



Pick and Place

The arm swivels and transports the product to the next process.

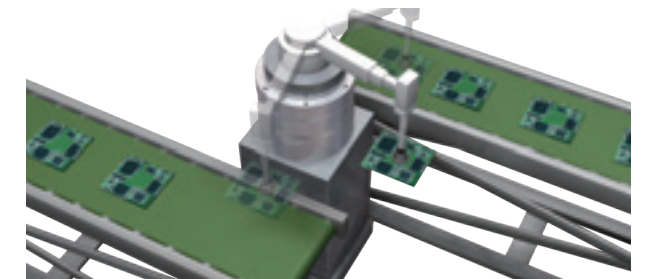
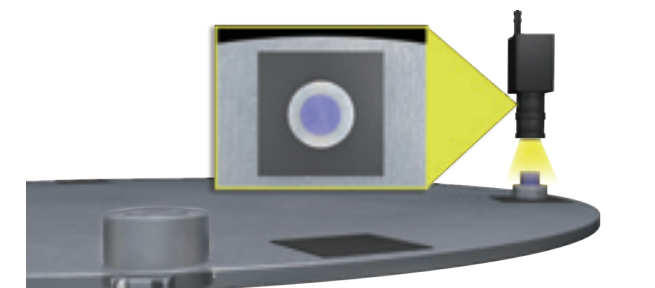


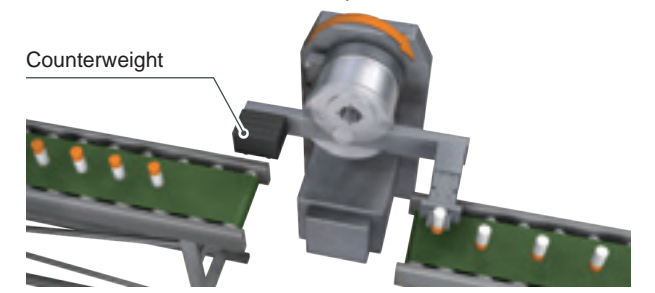
Image inspection of electronic parts

The camera inspects the image of the workpiece on the table. Slight vibrations at standstill are reduced compared to conventional products.



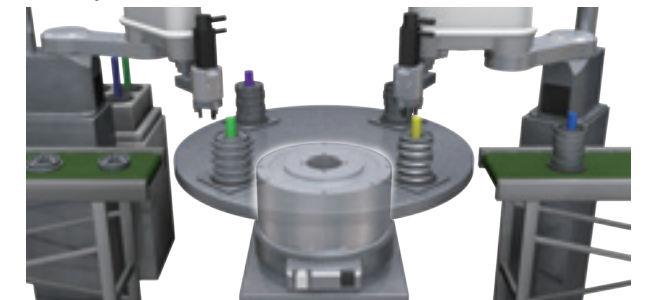
Reversing transport of parts

Mount on the wall and rotate by 180°. Counterweight is used for unbalanced workpieces.



Stocker

Used as several types of parts stocker. Positioning in conjunction with a robot for take-out.



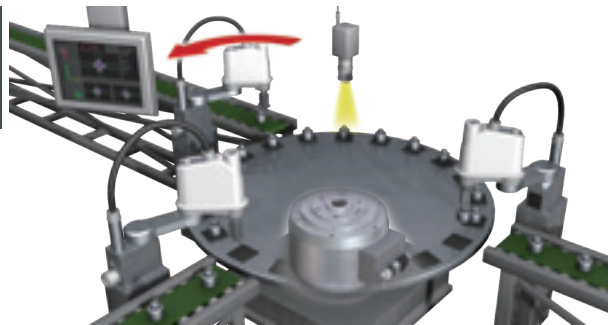
Actuator lineup

AX1R Series High precision

5 sizes from 22 to 210 N·m are available

Built-in high precision bearing with high indexing accuracy, shaft runout and surface runout, making it ideal for compact part assembly and inspection.

Assembly and inspection machine for small workpieces



Best-fit applications

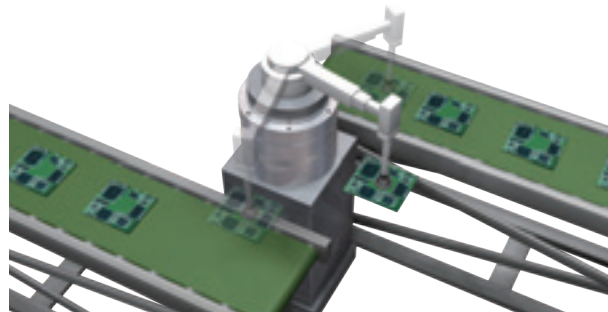
- Precision measurement
- Inspection machine
- Assembling machine

AX2R Series High speed rotation

3 sizes from 6 to 18 N·m are available

Compact design with small diameter is ideal for space saving. Because the axis inertia is small, this is the fastest series that enables high speed operation.

P&P at the arm



Best-fit applications

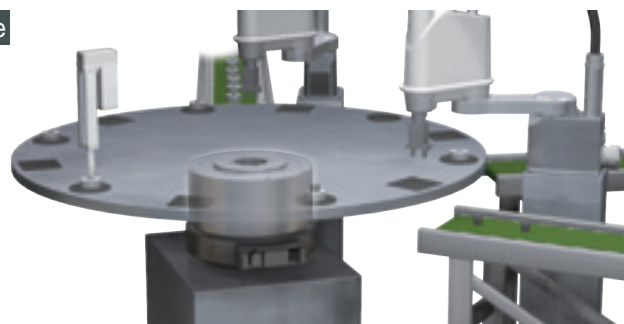
- P&P
- Assembling machine

AX4R Series Standard

8 sizes from 9 to 1000 N·m are available

Built-in bearing resistant to load and equipped with the most robust body. The only one in the series to offer an electromagnetic brake option.

Indexing table



Best-fit applications

- Assembling machine
- P&P
- Inspection machine

Driver lineup

AXD Series Driver

Two capacities available: 400 W, 800 W



AXD-S
(400 W)

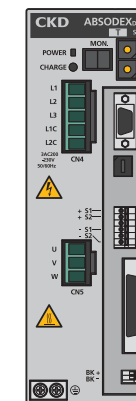
AXD-H
(800 W)



Downsizing of driver



Reduces driver volume by up to 50% compared to conventional models. Far more compact.



AX900TS-U0



AXD-SA2-NP



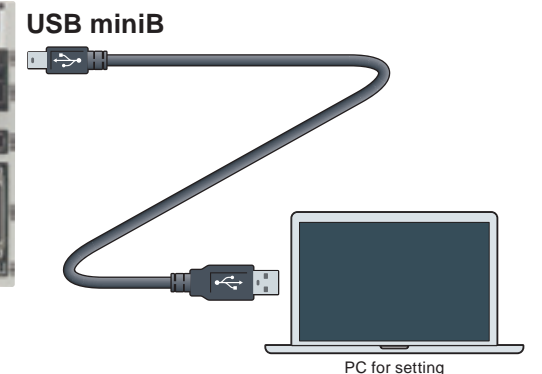
Easy setup via USB



The USB miniB port is used for connection with the setting PC. The dedicated cable and conversion cable are not required. Compared to conventional products, the communication speed is increased, and settings are easy as automatic connection is performed even after communication is cut off.



AXD

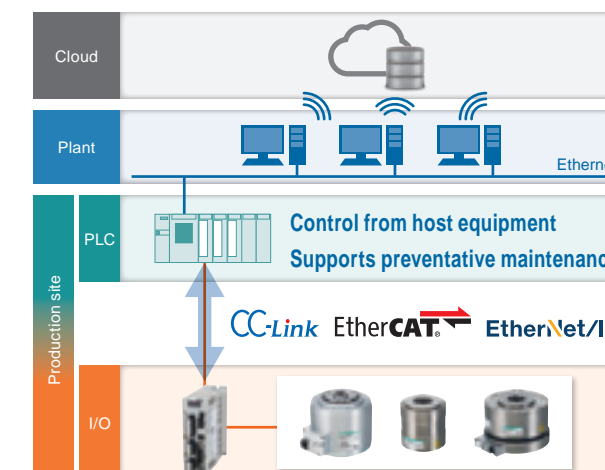


PC for setting

Compatible with all-types of networks



Our product is compatible with all-types of industrial networks. Control is possible from the host device via Ethernet for preventive maintenance.



- Data input operation
Performs arbitrary operation using data from the PLC.
- Point table operation
Operates by selecting table data that can be rewritten from the PLC.
- Monitor function
Monitors the current status such as the current position, position deviation, actuator load factor, etc.
- Data reading/writing
Read details of alarms that have occurred, write parameters, etc.

Flexible Operation



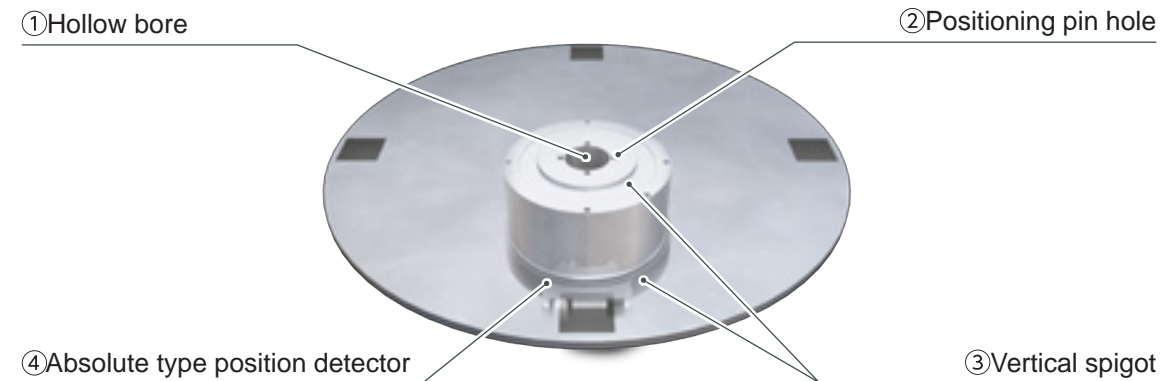
With abundant programming functions realize the operation that you want. Easy to change operations, allowing flexibility when changing specifications of equipment or lines. It can also be reused.



Convenient standard mechanism



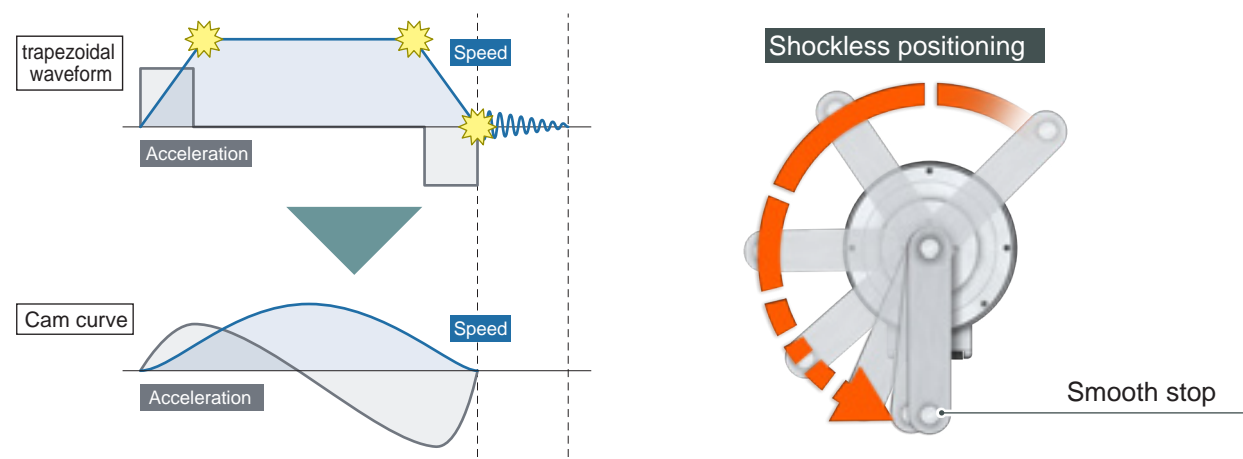
Simple design of equipment with 4 convenient standard mechanisms. This flexibility helps to reduce work processes and save space.



High motion characteristics



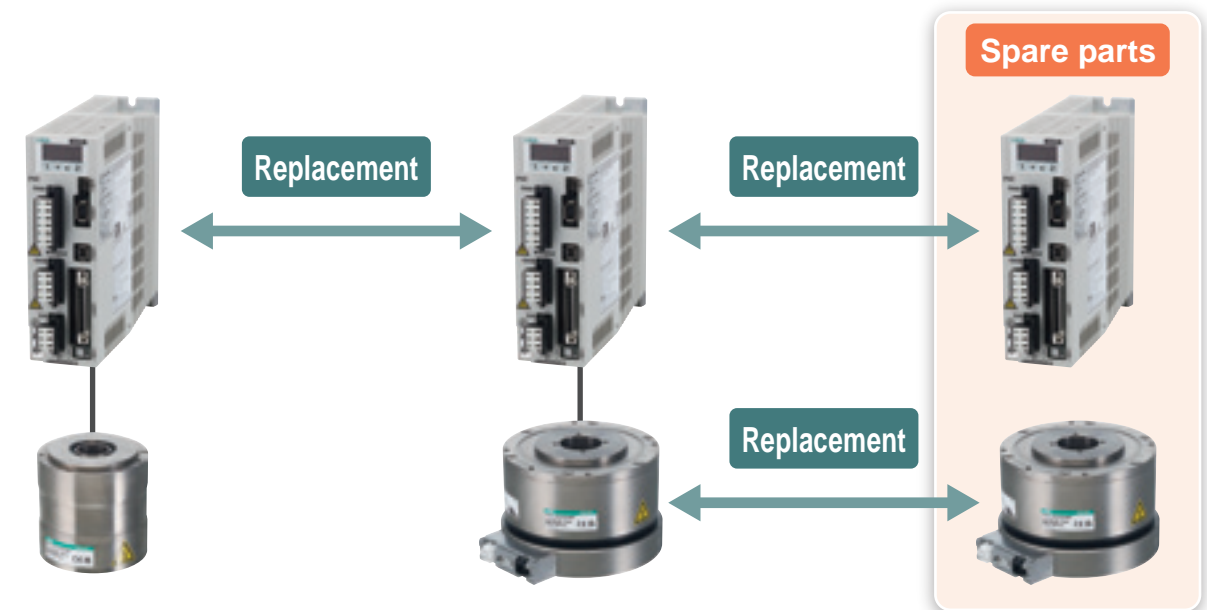
Smooth acceleration/deceleration operation with cam curve enables high-speed and high-cycle operation.



Driver compatibility



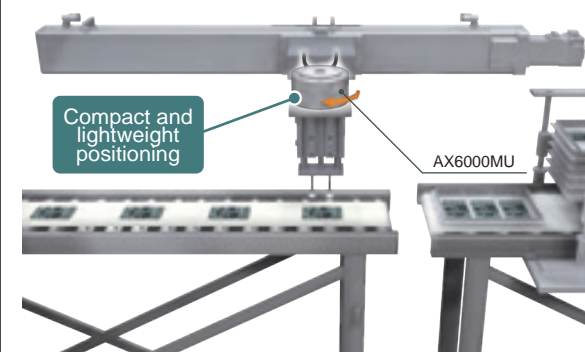
2 sizes are available for the driver. Compatibility makes it easy to replace in the event of problems. Equipped with an automatic recognition function that reads actuator information, for less work during initial setting.



Related products

AX6000M Series

Two sizes from 1.2 to 3 N·m are available. This is the smallest and lightest series and can be mounted on sliders and other moving parts.



Best-fit applications

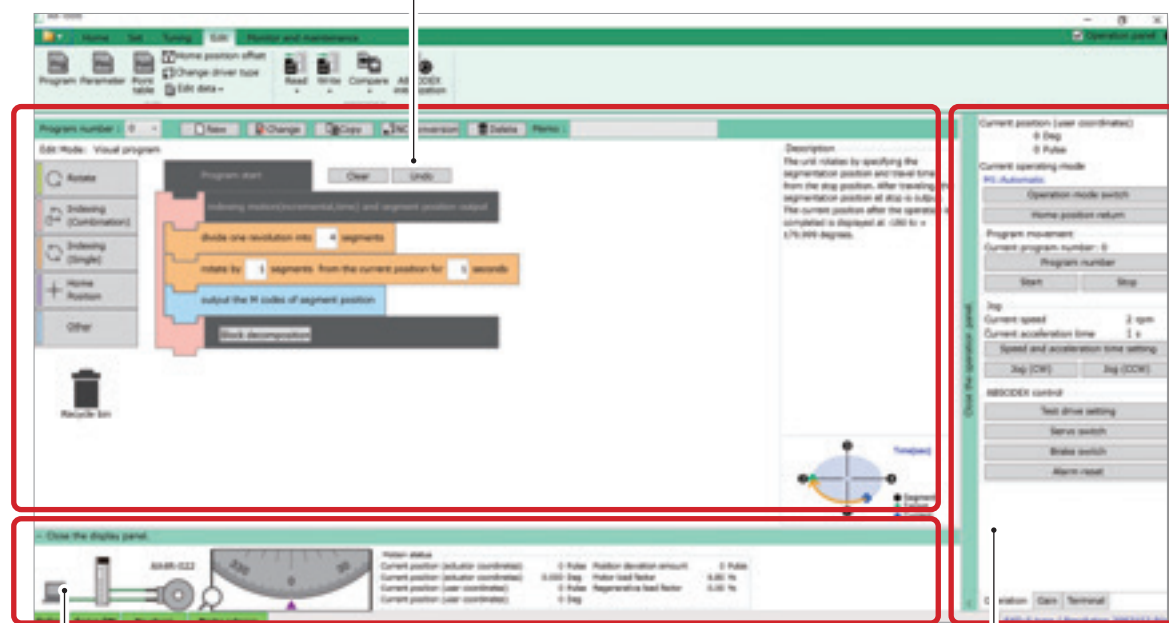
●Conveying fine workpieces ●θ-axis correction

Ready for everyone to use New AX-Tools

Main View

This is the screen where the selected function is used.

Free software



Display panel & communication status bar

Displays the status of the PC, driver, and actuator, as well as the communication status.

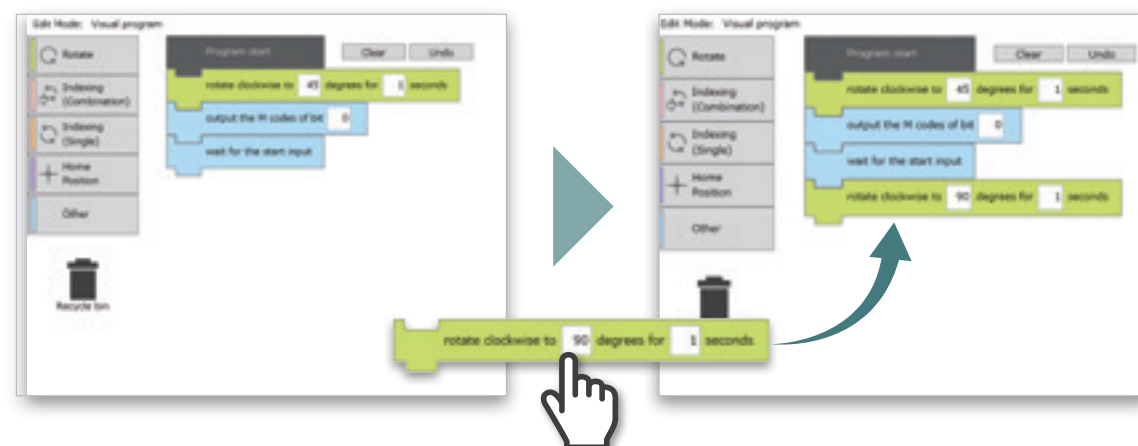
Operation panel

Actuator operation and gain can be adjusted.

Visual program



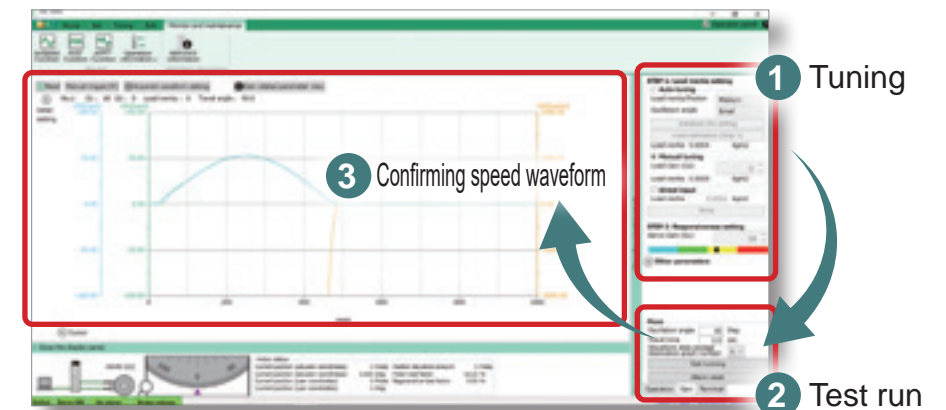
Added a visual program mode that allows easy program creation by mouse operation. Anyone can easily and intuitively create an operation program.



Gain adjustment made with just 1 screen



Gain adjustment is a 2-step process of load estimation and responsiveness adjustment. For load estimation, in addition to the conventional auto-tuning, inertia values can now be set directly. For responsiveness adjustment, 32 steps are available instead of the conventional 16 steps, allowing for more detailed adjustment. In addition, test runs can be performed to immediately check the adjustment results, reducing adjustment time. *Auto-tuning is available for all sizes.



Easy product status monitor

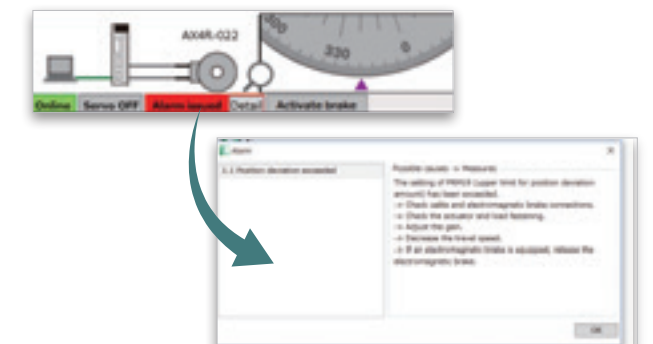


Displays network communication transmission and reception data. Difference in the communication contents of the PLC and the driver can be confirmed. It also allows the user to immediately check the contents of the alarm that occurred and what to do about it.

[Transmitted/Received data]



[Alarm]



Ready-to-run equal division program



This function is recommended if you want to work with equal divisions. Simply enter the number of divisions and travel time, and you are ready to go.

