



To assure safety

# Fluid control components : WARNING/CAUTION

Always read this section before use.

## Precautions for each model series

### Direct acting 2-port solenoid valve for clean blow (FVB)

## Design & selection

### ! WARNING

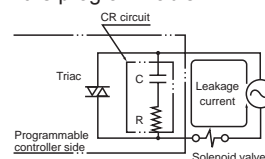
#### ■ Installing final filter

Install final filter (ex: FCS500) on secondary face of solenoid valve, as this solenoid valve is low particle generation specifications.

### ! CAUTION

#### ■ Leakage current from other fluid control components

In case actuate solenoid valves with programmable controller, confirm that the leakage current from the programmable controller's output is within each model's specifications.



## Maintenance

### ! CAUTION

#### ■ Assembling & disassembling

When disassembling or assembling, tighten the core assembly and socket with the following tightening torques.

Model No.	Core assembly set screw
<b>FVB2</b>	12 to 18 Nm
<b>FVB3</b>	16 to 24 Nm
<b>FVB4</b>	21 to 31 Nm
<b>FVB5</b>	21 to 31 Nm

SCPD3  
SCM  
SSD2  
MDC2  
SMG  
LCM  
LCR  
LCG  
LCX  
STM  
STG  
STR2  
MRL2  
GRC  
Cylinder switch  
MN3E  
MN4E  
4GA/B  
M4GA/B  
MN4GA/B  
F.R (module unit)  
Clean F.R  
Precision R  
Press gauge  
Diff. press gauge  
Electro-pneumatic R  
Speed controller  
Auxiliary valve  
Fitting/tube  
Clean air unit  
Pressure sensor  
Flow rate sensor  
Valve for air blow  
Ending

## Precautions for each model series

### Pilot kick 2-port solenoid valve for clean blow (ADK-Z)

## Design & selection

### ⚠ WARNING

#### ■ Working fluid

- (1) The quality of dry air used for clean blow should have an atmospheric dew point of  $-60^{\circ}\text{C}$  and over, oil removal rate of  $0.01 \text{ mg/m}^3$  or less.
- (2) This valve cannot be used for maintaining the vacuum.

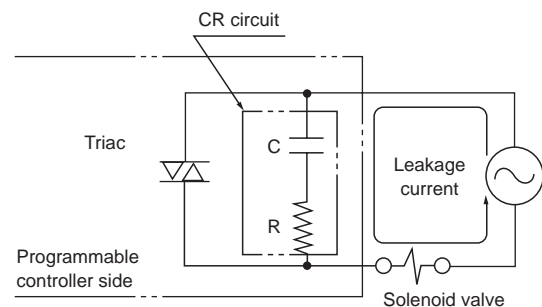
#### ■ Installing final filter

Install final filter (ex: FCS500) on secondary face of solenoid valve, as this solenoid valve is low particle generation specifications.

### ⚠ CAUTION

#### ■ Leakage current from other fluid control components

In case actuate solenoid valves with programmable controller, confirm that the leakage current from the programmable controller's output is within each model's specifications.



## Installation, piping & wiring

### ⚠ CAUTION

#### ■ Installation

- (1) As a general rule, the mounting orientation is upright, where the coil comes to the top side.

#### ■ Piping

- (1) If the pipe vibrates when the solenoid valve is opened and closed, securely fix the piping.
- (2) When the regulator and solenoid valve are directly coupled, the parts could mutually vibrate causing resonance and chattering.
- (3) If the piping sectional area on the fluid inlet is reduced, the operation may become unstable due to a differential pressure fault during valve operation. For the fluid inlet, use piping of a piping size that matches the port size of the valve. Do not use a needle valve.

## When using

### ⚠ CAUTION

#### ■ Instantaneous leakage

With the pilot kick 2-port valve, if sudden pressure is applied when the valve is closed, the valve may open for an instant causing fluid to leak. Caution is required during use.