



Pneumatic components

Safety Precautions

Be sure to read this section before use.

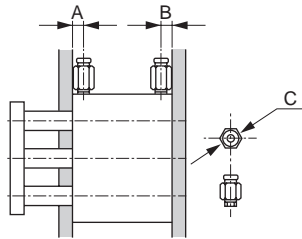
Refer to page 2 for general information on the cylinder, and to page 320 for general information on the cylinder switch.

Guided cylinder STG-B Series

Mounting, installation & adjustment

CAUTION

- Be sure to attach a speed controller during piping before use. The applicable fittings are as below.



Item Bore size (mm)	Port size	Port position dimensions		Applicable fittings	Fitting O.D. øC
		A	B		
ø12	M5×0.8	12	7	SC3W-M5-4-P7* SC3W-M5-6-P7* GWS4-M5-S-P7* GWS4-M5-P7* GWL4-M5-P7* GWL6-M5-P7* GWS6-M5-P7*	ø12 or less
ø16		12	7.5		
ø20	Rc1/8	10.5	8.5		ø15 or less
ø25		11.5	9	SC3W-6-4/6/8-P7* GWS4-6-P7* GWS6-6-P7* GWS8-6-P7* GWL4-6-P7* GWL6-6-P7*	
ø32		12.5	9		
ø40		14	10		
ø50	Rc1/4	14	11	SC3W-8-6/8/10-P7* GWS4-8-P7* GWS6-8-P7* GWS10-8-P7* GWS12-8-P7* GWL4 to 12-8-P7*	ø21 or less
ø63		16.5	15		

- Do not damage surface flatness by denting or scratching the body (tube) mounting surface or the end plate surface. Make sure that the flatness of the mating surface where the end plate will be attached is, as a guideline, 0.03mm or below.

- When mounting the body with the through bolt, tighten with tightening torque as shown in the table below.

ø12	1.5 to 2.7N·m
ø16	
ø20/ø25	3 to 5.4N·m
ø32/ø40	5.2 to 9.2N·m
ø50/ø63	12.5 to 22N·m

- Allowable absorbed energy value

Use this cushion within the range of the allowable absorbed energy. When the unit will be used where the allowable absorbed energy will be exceeded, provide a separate external shock absorber. For details on the allowable absorbed energy value, refer to the specification field or selection guide.

SCPD3

SCM

SSD2

MDC2

SMG

LCM

LCR

LCG

LCX

STM

STG

STR2

MRL2

GRC

Cylinder Switch

MN3E
MN4E

4GA/B

M4GA/B

MN4GA/B

F.R. (module unit)

Clean F.R

Precision R

Press gauge
Diff. press gauge

Electro-pneumatic R

Speed controller

Auxiliary valve

Fitting/tube

Clean air unit

Pressure sensor

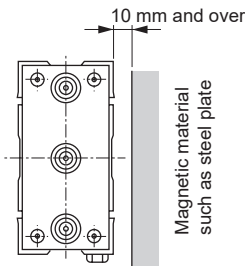
Flow rate sensor

Valve for air blow

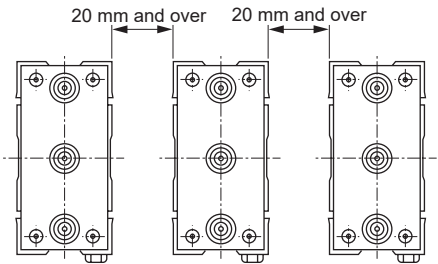
Ending

SCPD3
SCM
SSD2
MDC2
SMG
LCM
LCR
LCG
LCX
STM
STG
STR2
MRL2
GRC
Cylinder switch
MN3E MN4E
4GA/B
M4GA/B
MN4GA/B
F.R (module unit)
Clean F.R
Precision R
Press gauge Diff. press gauge
Electro-pneumatic R
Speed controller
Auxiliary valve
Fitting/tube
Clean air unit
Pressure sensor
Flow rate sensor
Valve for air blow
Ending

■ Be sure to attach a speed controller during piping before use. The available fittings are as below.



■ The cylinder switch may malfunction if cylinders are installed adjacently. Check that the following distances are provided between cylinders.(Same clearance for all bore sizes)



■ Do not rotate the piston rod unless you disassemble the product for maintenance, etc. Do not rotate the piston rod because misalignment may occur, which may cause unstable operation.