



Safety Precautions

Always read this section before use.

Refer to page 2 for general information of the cylinder, and to page 320 for general information of the cylinder switch.

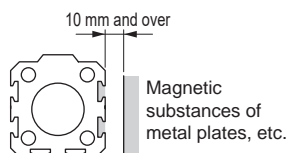
Compact cylinder SSD2 Series

Installation & adjustment

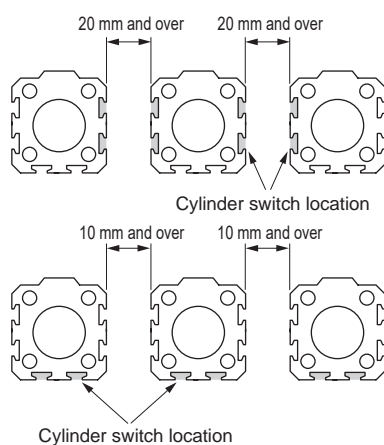
1. Common

CAUTION

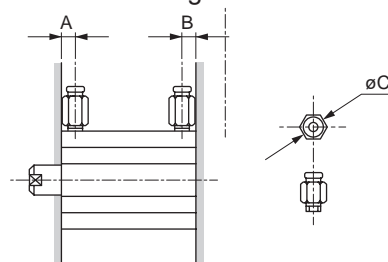
- The cylinder switch may malfunction if there is a magnetic substance such as a metal plate installed adjacently. Confirm that a distance of at least 10 mm is allocated from the surface of the cylinders. (Same clearance for all bore sizes)



- The cylinder switch may malfunction if cylinders are installed adjacently. Check that the following distances are allocated between cylinders. (Same clearance for all bore sizes)



- As compatible fittings are limited, see the following table to select the fitting.



Descriptions Bore size (mm)	Port diameter	Port location dimensions		Applicable fittings	Fitting O.D.	Inapplicable fittings
		A	B		øC	
ø12	M5	5.5	5.5	SC3W-M5-4-P7*	ø11 or less	GWS6-M5
ø16				SC3W-M5-6-P7*		
ø20		8	5.5	GWS4-M5-S-P7*		
ø25				GWS4-M5-P7*		
ø32	Rc1/8	11	6	GWL4-M5-P7*	ø15 or less	GWS10-6 GWL8-6 GWL10-6
ø40		12	8.5	GWL6-M5-P7*		
ø50	Rc1/4	10.5	10.5	SC3W-6-4, 6, 8-P7*	ø21 or less	GWS12-8
ø63		13	11	GWS4-6 GWS6-6-P7*		
ø80	Rc3/8	16	13	GWS4-8 GWS6-8-P7*	ø21 or less	-
ø100		23	15	GWS10-8-P7*		
				GWL4 to 12-8-P7*		
				SC3W-10-6, 8, 10-P7*		
				GWS6-10 GWS8-10-P7*		
				GWS10-10-P7*		
				GWL6 to 12-10-P7*		