



Safety precautions

Fluid Control Components: Warnings and Cautions

Be sure to read this section before use.

Precautions for each model series and for individual products

Explosion-proof direct acting/pilot operated 2, 3-port solenoid valve

Design/selection

CAUTION

1 Selection reference

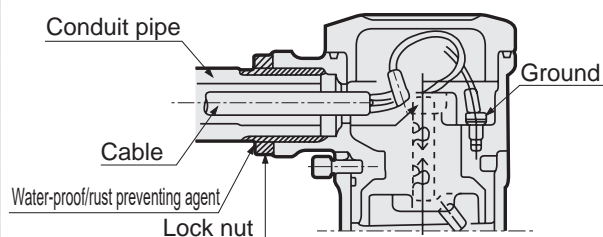
Thoroughly read and comprehend the section "Standards and certification" (Intro Pages 55 and 56) for the selection standards for the explosion-proof solenoid valve.

Mounting, piping and wiring

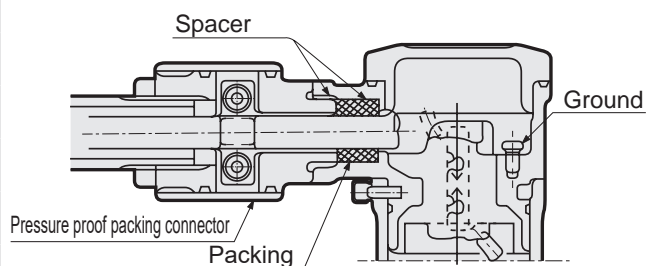
CAUTION

1 Wiring

(1) Wire as shown in the figure below.

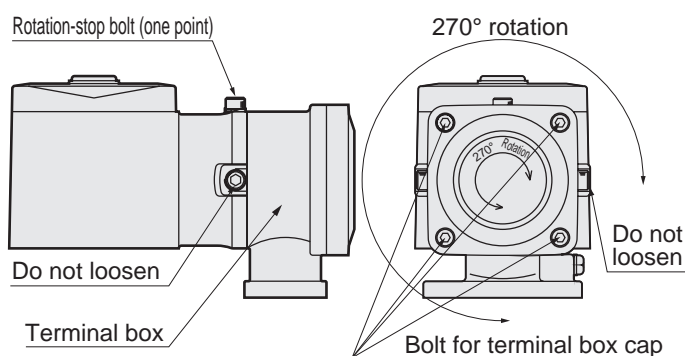


[For conduit thread]



[For pressure proof packing]

(2) Terminal box rotates 270°. The orientation can be changed by loosening the rotation-stop bolt. After wiring and setting the wiring direction, tighten the rotation-stop bolt with a torque of 0.6 to 0.8 N·m to fix the terminal box. If the rotation-stop bolt is loose, the terminal box could fall off during use. Furthermore, rotation of the terminal box may result in damage to the rotating unit or disconnection of an internal wire. When laying the electric wires, do not loosen any bolts other than the four terminal box cap bolts and rotation-stop bolt. The explosion-proof performance cannot be guaranteed.



(3) Include a fuse (1 A) in the electrical circuit.

Maintenance

CAUTION

1 Maintenance of coil case

Do not disassemble an explosion-proof solenoid valve used in an explosive hazard area, even when repair is necessary. Since the coil case section has a pressure and explosion-proof structure, if it must be disassembled for inspection, contact CKD.

To guarantee the performance of the explosion-proof valve, CKD requests that customers return the valves temporarily for repair at the CKD manufacturing plant.

For precautions other than the above, refer to the precautions given on pages 242, 243, 324 and 325 for the basic solenoid valves (direct acting general purpose, pilot operated general purpose and pilot kick general purpose).