



Pneumatic components

# Safety Precautions

Be sure to read this section before use.

Refer to Intro Page 73 for general information of the cylinder, and to Intro Page 80 for general information of the cylinder switch.

## Product-specific cautions: Clamp cylinder CAC4 Series

### Design/selection

#### 1. Anti-spatter adherence CAC4-G4

##### WARNING

- The durability of this cylinder series is improved in comparison to standard cylinders when used in an atmosphere exposed to spatter. But durability may be shorter than the standard cylinder when used in other atmospheres.

### Use/maintenance

#### 1. Common (With T type switch: band mounting)

##### WARNING

- When moving the switch position to the stroke length direction

- The 1-color display switch can be fine-tuned by  $\pm 3$  mm from the default. If the adjusting range exceeds  $\pm 3$  mm, or when fine-tuning the 2-color display switch, move the band position.

- Loosen the switch fixing screw, shift the switch along the rail, then tighten at the specified position.

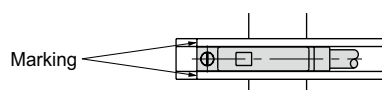
When using T2, T3, T0, or T5, use a flathead screwdriver (clockwork screwdriver, precision screwdriver, etc.) with a grip diameter of 5 to 6 mm, a 2.4 mm or smaller tip, and a thickness of 0.3 mm or less to tighten the screws with a tightening torque of 0.1 to 0.2 N·m.

When using T\*C, T2J, T2Y, or T3Y, tighten the screw with a tightening torque of 0.5 to 0.7 N·m.

- The switch bracket rail has a marking 4 mm from the rail end. Use as a guide to the mounting position when replacing the switch.

Switch rail markings are set to the switch max. sensitivity position, which is the switch mounting position in the dimensions.

The max. sensitivity position will change when the switch is changed or when the band is moved. Adjust the position accordingly in this case.



- When moving the switch position to the circumferential direction

- Loosen the band fixing screw, shift the switch rail in the circumferential direction, then tighten at the specified position. The tightening torque of band fixing screw is 0.6 to 0.8 N·m.

- Shifting the band position

- Loosen the band fixing screw, shift the switch rail and band along the cylinder tube, and tighten at the specified position. The tightening torque of band fixing screw is 0.6 to 0.8 N·m.

