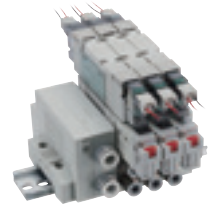


Pilot operated 3, 5-port valve M4GB2*R/MN4GB2*R Spacer pilot check valve

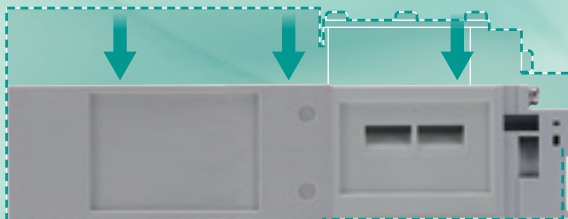


- Enables long position holding of cylinders, bore size up to $\phi 63$
- Secondary residual pressure can be manually discharged
- 16 mm wide pilot check valve with longer service life

Smaller equipment footprint

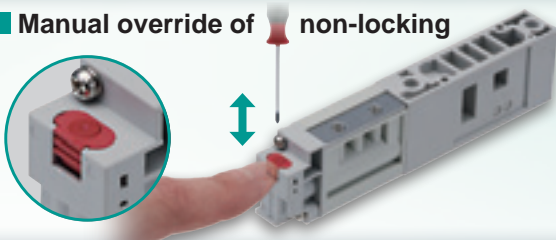
Width and depth are compatible with conventional products.

Height
38%
Reduced

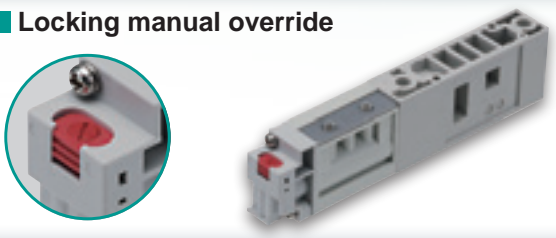


Selectable residual pressure exhaust manual override

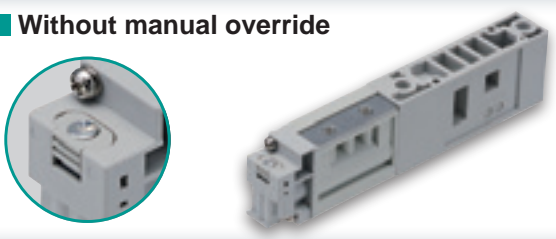
Manual override of non-locking



Locking manual override

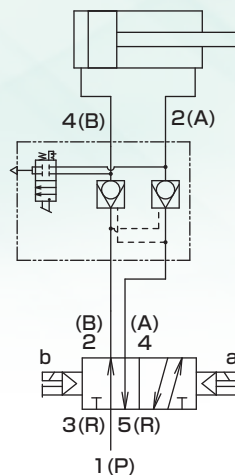


Without manual override



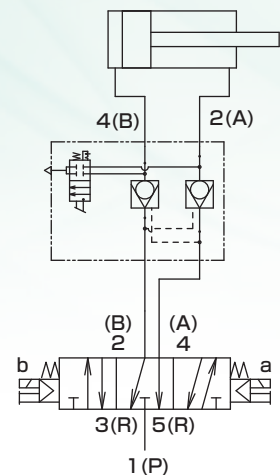
Example of circuit

Position locking



2-position Single / Double

Brake



ABR connection

Manual operation New/Old option comparison table

	4G2R-PC-M (Non-locking)	4G2R-PC-M1 (Lock)	4G2R-PC (Without manual override)
New product	● *	●	●
Conventional product	●	x	x

* The new and old model No. are the same.



Always read the safety precautions on the reverse side and "Pneumatic Valves General Catalog (No. CB-023SA)".

CKD Corporation

CC-1600A

4G spacer pilot check valve

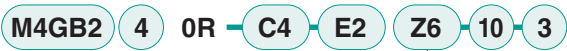
Specifications

Item	4G2R-PC*
Working fluid	Compressed air
Max. working pressure	MPa 0.7
Min. working pressure	MPa 0.1
Proof pressure	MPa 1.05
Effective cross-sectional areamm ²	3.5 (With solenoid valve)
Ambient temperature	°C -5 to 55 (no freezing)
Working fluid temperature	°C 5 to 55
Lubrication**	Built-in controller eliminates need for controller installation space and wiring.
Atmosphere	Cannot be used in corrosive gas environment.
Weight	g 54

*1: Use turbine oil Class 1 ISO VG32 for lubrication. Note that excessive lubricant may cause unstable operation.

How to order manifold

Manifold model No.



Block manifold model No.



A Model No.	B Switching position	C Port size	D Electrical connections	E Station No.	F Voltage
E Option					
Z6 Spacer pilot check valve					

Regarding listed model No.

Only models of the newly added pilot check valves are shown in this catalog.
Refer to "Pneumatic Valves" (Catalog No.CB-023SA) for details on the 4GB/M4GB/MN4GB Series (specifications / model No. / safety precautions, etc.).

Discrete model No.



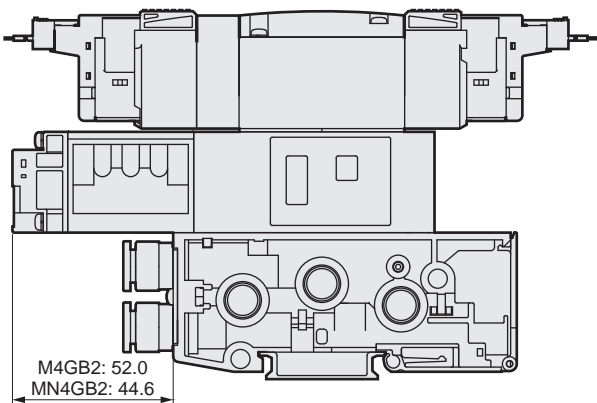
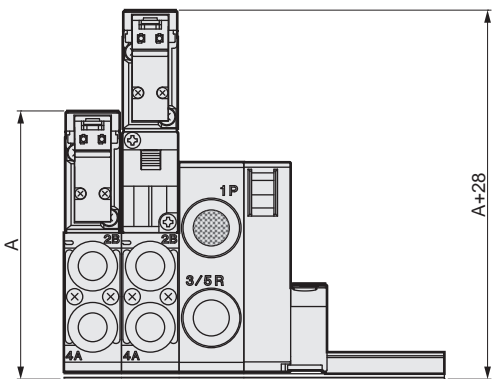
Pilot check valve

Residual pressure exhaust function	
M	Manual override of non-locking
M1	Locking manual override
Blank	Without manual override

⚠ Precautions for model No. selection

- *1: Specify the spacer mounting position and residual pressure exhaust function selection in the manifold specifications sheet.
- *2: Spacer pilot check valve is not available when the fitting for port A/B is an elbow.
- *3: Stacking of spacers is not possible.
- *4: A spacer cannot be combined with a masking plate.
- *5: The spacer pilot check valve can be mounted only when the piping method is a base piping.
- *6: If spacers are added to the reduced wiring manifold, the socket assembly lead wires will not reach far enough. Replace the valve block.

Dimensions



Note: For A dimensions, check the dimensions of each specification in Pneumatic Valves (No. CB-023SA) .

If the goods and/or their replicas, the technology and/or software found in this catalog are to be exported from Japan, Japanese laws require the exporter makes sure that they will never be used for the development and/or manufacture of weapons for mass destruction.

CKD Corporation

[Website]
<https://www.ckd.co.jp/en/>

Head Office • Plant
Tokyo Office

Osaka Office

2-250, Ouj, Komaki, Aichi 485-8551
4F, Bunkahousou Media Plus, 1-31-1, Hamamatsu-cho,
Minato-ku, Tokyo 105-0013
6F, PMO EX Shin-Osaka, 4-2-10 Miyahara,
Yodogawa-ku, Osaka 532-0003

TEL(0568)77-1111 FAX(0568)77-1123
TEL(03)5402-3620 FAX(03)5402-0120
TEL(06)6396-9630 FAX(06)6396-9631