

CKD

SM-396068-A

INSTRUCTION MANUAL

ELECTRIC SLIDER

KBB Series

KBB-50

SLIDER INSTRUCTION MANUAL

- Read this manual carefully and thoroughly before using this product.
- Pay extra attention to the instructions concerning safety.
- After reading this manual, keep it in a safe and convenient place.

CKD Corporation

Introduction

Before using the Electric Slider KBB series, read through and completely understand this instruction manual to assure correct use.

For general details on the Electric Slider KBB series, see the instruction manual (basic) provided separately.

Cautions

1. The contents of this manual are subject to change without prior notice.
2. The contents of this manual are subject to change without prior notice to effect improvements.
3. All efforts have been made to assure the contents of this manual. If you have any questions, or find any mistakes, however, please contact CKD.
4. CKD will not be held responsible for any effects caused by using this equipment, regardless of Item 3 above.
5. This equipment does not have an explosion-proof structure. Take utmost care of the operating environment.

Table of Contents

	Page
General Descriptions	1
Section 1 Safety	1
1.1 Safety Instructions	1
1.2 To Use the Equipment Safely	5
Section 2 List of Shipment.....	6
2.1 List of Shipment	6
3.2 Single Axis Specifications	8
Section 4 Maintenance	- 18 -
4.1 Motor Replacement Procedures	- 18 -
4.1.1 Straight Motor Axis	- 18 -
4.1.2 Side Mounted Motor Axis	- 20 -
4.2 Changing Side Mounted Motor Direction	- 23 -
4.3 Adjusting Home Point	- 25 -
4.4 Belt Replacement Procedures	- 28 -
4.5 Replacing Ball Screw	- 28 -
4.6 Replacing Linear Guide	- 28 -
Section 5 Spare Parts	- 29 -
5.1 Spare Parts.....	- 29 -

General Descriptions

- This manual describes the axis type expression method, specifications and motor replacement procedures, etc., according to the type of axis.
- For the installation, see the instruction manual (installation of actuator) provided separately.

Section 1 Safety

1.1 Safety Instructions

- Before the installation, programming, operation, maintenance and inspection of the equipment, be sure to read through this manual so that you can use the Electric Slider KBB series with safety.
- After you have read this manual, keep it nearby for future reference.

Be sure to strictly observe the following safety instructions to assure correct use of the **Electric Slider KBB series**.

This manual contain the important information to prevent injury to the operators and persons nearby, to prevent damage to assets and to assure correct use of the equipment.

Make sure that you have well understood the following details (indications and symbols) before reading this manual. Always observe the information that is noted.



This means that "incorrect handling will lead to fatalities or serious injuries."



This means that "incorrect handling" may lead to personal injuries or physical damage (i.e., damages to building, household goods, domestic animals and pets).

Note

Briefly describes the points and notices for the operating procedures, and the points for using the equipment efficiently.



WARNING

- **Install the safety fences to prevent anyone from entering the working envelope of the robot.**

When the door is attached to the safety fence, the robot should be stopped at emergency at the same time that the door has opened.

- **Connect the EMERGENCY STOP pushbutton switch to the emergency stop input terminal of the controller and mount the same switch at an easy-to-operate place in an emergency.**

The EMERGENCY STOP switch must not be reset automatically and cannot be reset negligently by any person.

- **Wiring should be done safely and completely according to the Electrical Installations Technical Requirements and Interior Wiring Requirements of Japan.**

Incorrect wiring will result in an electric shock or a fire.

- **The equipment MUST NOT be repaired or modified without prior written permission from the manufacturer.**

Otherwise, an accident or damage will be caused.

- **Before the maintenance and inspection, be sure to turn off the controller main power switch. Take all necessary measures to prevent anyone other than the worker engaged in adjustment of the robot from negligently turning the power on. (Lock the switch and put a tag showing "DO NOT turn the power on.")**

Also, DO NOT touch the controller interior three (3) minutes after the power is turned off.

Otherwise, you may get an electric shock due to residual voltage of the capacitor.

- **DO NOT touch the motor, heat sink and cement resistor in the controller.**

They are too hot and you may get burnt. Before performing inspection, take enough time to cool them off.

- **DO NOT pour water on the equipment interior or exterior, or drain water from it. Otherwise, you may get an electric shock, or the equipment will be damaged.**

When the equipment has contaminated, wipe it off with a hard squeezed cloth. DO NOT use a thinner, benzine or other organic solvent.

DO NOT throw away metals, combustibles or other contaminant into the opening of this equipment.

A fire or an electric shock will be caused.



WARNING

- **DO NOT put your finger or hand on the movable part or opening of the equipment.**
Otherwise, you may get injured.
- **When using the actuator in other than the horizontal state, be sure to select the actuator with brake.**
Otherwise, the slider will drop at power OFF, and you will be injured.
- **As the equipment is heavy, make sure of its weight and gravity center position and disconnect the cables when carrying the equipment.**
Also, DO NOT carry the equipment with the slider. Otherwise, the slider will move and you will get injured.
- **DO NOT use this equipment for the living body as a massaging machine.**
Otherwise, you will be injured due to incorrect teaching or mis-operation.
- **This equipment has not a sealed structure. During use, grease of the ball screw or wear of the belt may scatter from the opening of the equipment.**
When using this equipment for food and chemical applications, take appropriate measures against entry of them.
- **Enter the robot type and initialize the memory correctly.**
Otherwise, the robot may move unexpectedly and you will be injured.
- **DO NOT use this equipment in an atmosphere of inflammable gas or an atmosphere inducing an explosion.**
As this equipment is not explosion-proof, it may explode in the worst occasion.
- **DO NOT damage, break, process, forcibly bend, stretch, place a heavy object on or pinch the cables (power cable, controller cable).**
Otherwise, an electric shock or a fire will be caused.
- **Should an abnormality such as smoke or nasty smell occur, turn the power off immediately and stop using the equipment.**
If the equipment is used continuously, an electric shock or a fire will be caused.
- **When using the side mounted motor axis in the vertical condition, be sure to check for the belt on a regular basis. Replace the belt every 3,000-hour operation.**

If the belt whose service life already ended is used continuously, it may be broken or the slider may drop, and you will be injured.



CAUTION

- **DO NOT place the equipment at a place where the ambient temperature exceeds 40°C, or where the temperature changes sharply, causing condensing, or where it is exposed to direct sunlight.**

Additionally, if the equipment is installed at a narrow place, the ambient temperature rises due to heat generation in the controller itself or external device, which will result in malfunction or mis-operation of the equipment.

- **DO NOT use the equipment at a place where an impact or vibration is involved. Also, DO NOT use the equipment in an atmosphere where conductive dust, corrosive gas or oil mist generates.**

Otherwise, a fire, electric shock, malfunction or mis-operation will be caused.

- **DO NOT use the equipment at a place where too much dust or dirt exists.**

If the equipment is used at such a place, it may malfunction because this equipment is not dust-proof.

- **DO NOT use repair parts other than those designated by the manufacturer.**

Otherwise, the equipment cannot be operated to its full capacity and will cause malfunction.

- **Mount the robot on a highly rigid frame.**

If rigidity of the frame is not enough, vibration (or resonance) may be caused during the robot operation, adversely affecting the operation.

Attention:

For the safety instructions which seem especially important, relevant warning label is attached to the equipment.

When the label attached to the equipment has peeled off or the characters are defaced and unreadable, please procure it from our sales agent in your territory by specifying the part number, and attach it to the original place.

Warning label for actuator

Part number: KBB-55620157

**WARNING**

- Before the installation, programming, operation, maintenance and inspection of the equipment, be sure to read through this manual so that you can use the Roibot with safety.
- Install the safety fences to prevent anyone from entering the working envelope of the robot.
- DO NOT put your finger or hand on the movable part or opening of the equipment. Otherwise, you may get injured.
- When using the actuator in other than the horizontal state, be sure to select the actuator with brake. Otherwise, the slider will drop at power OFF, and you will be injured.

1.2 To Use the Equipment Safely

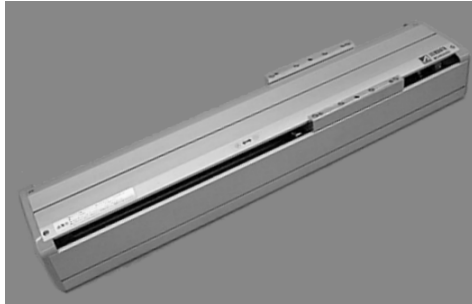
The details of this paragraph are the same as those in Para. 1.2 of the KBB series instruction manual (basic) provided separately. Read through this paragraph before using the equipment.

Section 2 List of Shipment

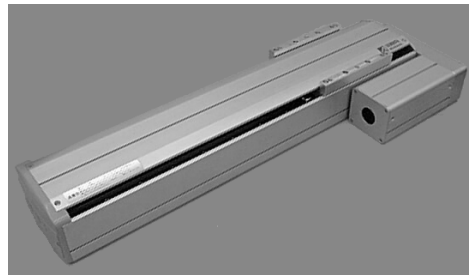
2.1 List of Shipment

The actuator to be shipped normally consists of the following parts.

(1) Actuator



or



As per the contents of your order.

(2) Oval head bolts (M8 × 40)

- The following bolts are attached per each axis (i.e., actuator).



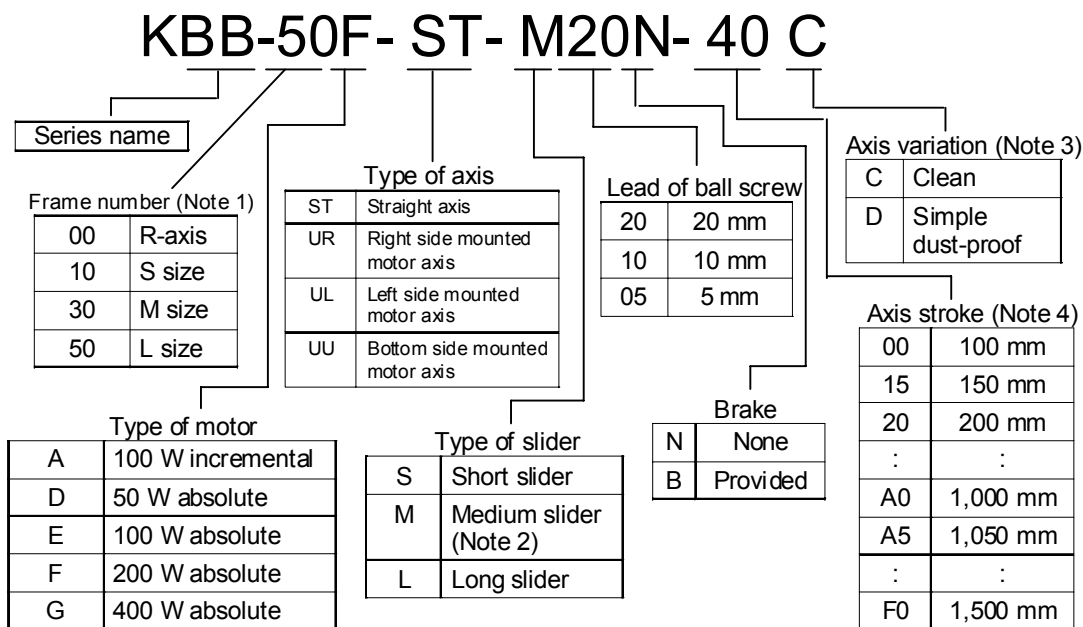
Axis stroke (mm) (Both straight and side mounted motor axes)	Attached quantity
100 ~ 200	12
250 ~ 600	16
650 ~ 1,000	20
1,050 ~ 1,300	26
1,350 ~ 1,500	28

Section 3 Axis Specifications

3.1 Type of Axis and Name of Each Part

- Type of axis

The type of axis is as shown below.



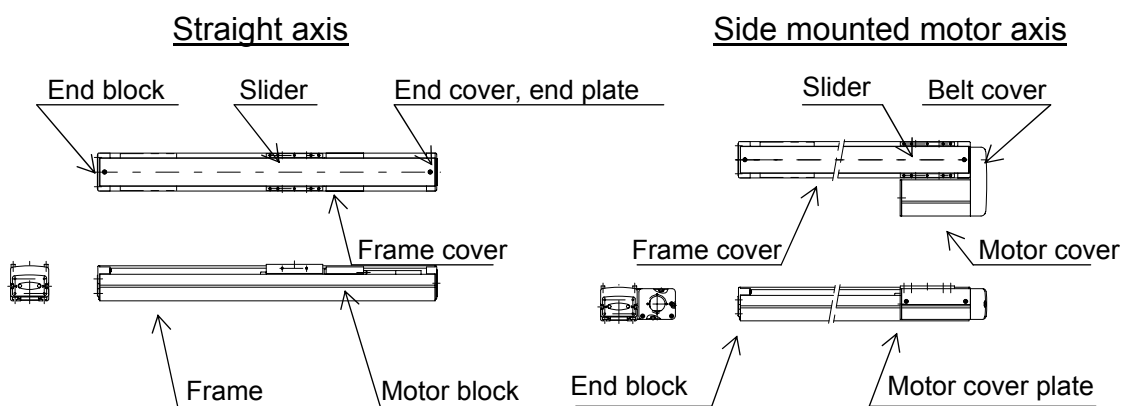
Note 1: Frame width: S size 78 mm, M size 130 mm, L size 160 mm

Note 2: For the KBB-10 model, the standard slider is used.

Note 3: For the KBB-50 model, only the simple dust-proof type is used.

Note 4: For the KBB-10 and KBB-30 models, the longest stroke is 1,050 mm.

- Name of each part



3.2 Single Axis Specifications

• Specifications

Type of axis: KBB-50F-□□-□□□□-□□

Motor		200 W absolute AC servo motor		
Drive system		Use of ball screw Diameter 20 mm Lead 20 mm, 10 mm, 5 mm		
Guide system		Linear guide (double) Bearing block: Four (4) pcs.		
Maximum payload mass (Note 1)	Lead of ball screw	Horizontal	Vertical	
			—	Regenerative unit used
	20 mm	60 kg (Note 1)	3 kg	12 kg
	10 mm	100 kg	8 kg	25 kg
Maximum speed (Note 2)	Lead of ball screw 20 mm	1,200 mm/s		
	Lead of ball screw 10 mm	600 mm/s		
	Lead of ball screw 5 mm	300 mm/s		
Permissible static moment (Note 3)	Medium slider	MR: 2,080 N·m, MP: 2,160 N·m, MY: 1,820 N·m		
	Long slider	MR: 2,080 N·m, MP: 3,150 N·m, MY: 2,640 N·m		
Repeatability		±0.01 mm		
Resolution		0.01 mm		
Rated thrust (axial force)	Lead of ball screw 20 mm	160 N		
	Lead of ball screw 10 mm	320 N		
	Lead of ball screw 5 mm	640 N		

Note 1: If the master power voltage of the controller is 110 V or over when the 100 V system is used (or 220 V or over when the 200 V system is used), and the load mass is 50 kg or over, a regenerative electric discharge unit is required.

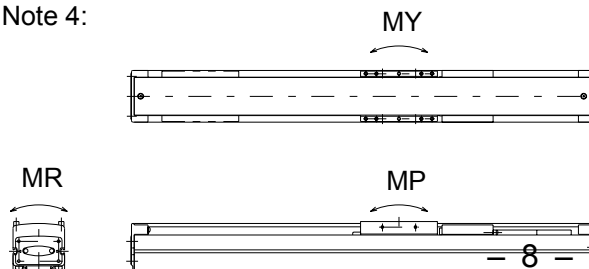
Additionally, when the speed exceeds 1,000 m/s during operation, the maximum payload mass is 50 kg.

Note 2: These are the values when the acceleration/deceleration time is 0.36 s or over

Note 3: The maximum speed differs with the axis stroke as shown below.

Stroke	Maximum speed		
	Lead of ball screw 20 mm	Lead of ball screw 10 mm	Lead of ball screw 5 mm
600 mm or less	1,200 mm/s	600 mm/s	300 mm/s
650 ~ 800 mm	1,100 mm/s	550 mm/s	280 mm/s
850 ~ 1,000 mm	1,000 mm/s	500 mm/s	250 mm/s
1,050 ~ 1,200 mm	700 mm/s	350 mm/s	180 mm/s
1,250 ~ 1,300 mm	500 mm/s	250 mm/s	130 mm/s
1,350 ~ 1,400 mm	400 mm/s	200 mm/s	100 mm/s
1,450 ~ 1,500 mm	300 mm/s	150 mm/s	80 mm/s

Note 4:



MR: Rolling moment
MP: Pitching moment
MY: Yawing moment

Discontinue

Type of axis: KBB-50G-□□-□□□□-□□

Motor		400 W absolute AC servo motor	
Drive system		Use of ball screw Diameter 20 mm Lead 20 mm, 10 mm, 5 mm	
Guide system		Linear guide (double) Bearing block: Four (4) pcs.	
Maximum payload mass (Note 1)	Lead of ball screw	Horizontal	Vertical
	20 mm	100 kg	25 kg
	10 mm	150 kg	50 kg
	5 mm	150 kg	60 kg
Maximum speed (Note 2)	Lead of ball screw 20 mm	1,200 mm/s	
	Lead of ball screw 10 mm	600 mm/s	
	Lead of ball screw 5 mm	300 mm/s	
Permissible static moment (Note 3)	Medium slider	MR: 2,080 N·m, MP: 2,160 N·m, MY: 1,820 N·m	
	Long slider	MR: 2,080 N·m, MP: 3,150 N·m, MY: 2,640 N·m	
Repeatability		±0.01 mm	
Resolution		0.01 mm	
Rated thrust (axial force)	Lead of ball screw 20 mm	320 N	
	Lead of ball screw 10 mm	640 N	
	Lead of ball screw 5 mm	1,280 N	

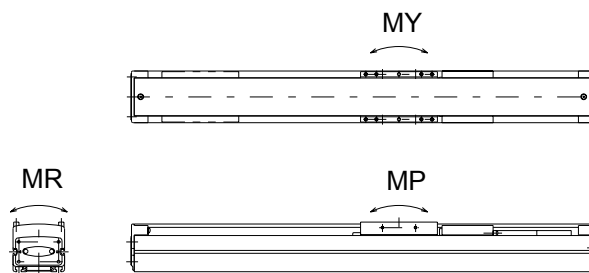
Note 1: A regenerative electric discharge unit is required, irrespective of the master power voltage and load mass.

Note 2: These are the values when the acceleration/deceleration time is 0.36 s or over

Note 3: The maximum speed differs with the axis stroke as shown below.

Stroke	Maximum speed		
	Lead of ball screw 20 mm	Lead of ball screw 10 mm	Lead of ball screw 5 mm
600 mm or less	1,200 mm/s	600 mm/s	300 mm/s
650 ~ 800 mm	1,100 mm/s	550 mm/s	280 mm/s
850 ~ 1,000 mm	1,000 mm/s	500 mm/s	250 mm/s
1,050 ~ 1,200 mm	700 mm/s	350 mm/s	180 mm/s
1,250 ~ 1,300 mm	500 mm/s	250 mm/s	130 mm/s
1,350 ~ 1,400 mm	400 mm/s	200 mm/s	100 mm/s
1,450 ~ 1,500 mm	300 mm/s	150 mm/s	80 mm/s

Note 4:



MR: Rolling moment
MP: Pitching moment
MY: Yawing moment

- Axis dimensions

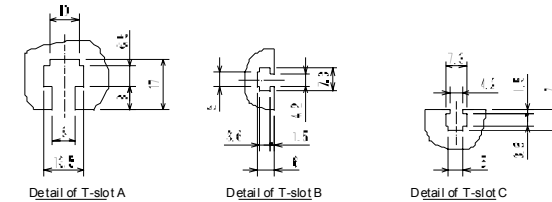
(1) Straight axis

[KBB-50F-ST-***] (200 W absolute motor specifications)

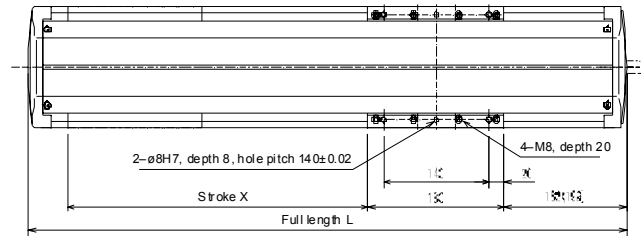
Type	KBB-50F-ST-M**N-20	KBB-50F-ST-M**N-30	KBB-50F-ST-M**N-40	KBB-50F-ST-M**N-50	KBB-50F-ST-M**N-60	KBB-50F-ST-M**N-70	KBB-50F-ST-M**N-80	KBB-50F-ST-M**N-90	KBB-50F-ST-M**N-A0	KBB-50F-ST-M**N-B0	KBB-50F-ST-M**N-C0	KBB-50F-ST-M**N-D0	KBB-50F-ST-M**N-E0	KBB-50F-ST-M**N-F0
Type	KBB-50F-ST-M**B-20	KBB-50F-ST-M**B-30	KBB-50F-ST-M**B-40	KBB-50F-ST-M**B-50	KBB-50F-ST-M**B-60	KBB-50F-ST-M**B-70	KBB-50F-ST-M**B-80	KBB-50F-ST-M**B-90	KBB-50F-ST-M**B-A0	KBB-50F-ST-M**B-B0	KBB-50F-ST-M**B-C0	KBB-50F-ST-M**B-D0	KBB-50F-ST-M**B-E0	KBB-50F-ST-M**B-F0
Stroke X (mm)	200	300	400	500	600	700	800	900	1000	1100	1200	1300	1400	1500
Full length (mm)	693(630)	693(730)	793(830)	893(930)	993(1030)	1093(1130)	1193(1230)	1293(1330)	1393(1430)	1493(1530)	1593(1630)	1693(1730)	1793(1830)	1893(1930)
Mass of axis (kg)	16.1(16.9)	18.0(18.8)	19.9(20.7)	21.8(22.6)	23.7(24.5)	25.6(26.4)	27.5(28.3)	29.4(30.2)	31.3(32.1)	33.2(34.0)	35.1(35.9)	37.0(37.8)	38.9(39.7)	40.8(41.6)

Type	KBB-50F-ST-M**N-25	KBB-50F-ST-M**N-35	KBB-50F-ST-M**N-45	KBB-50F-ST-M**N-55	KBB-50F-ST-M**N-65	KBB-50F-ST-M**N-75	KBB-50F-ST-M**N-85	KBB-50F-ST-M**N-95	KBB-50F-ST-M**N-A5	KBB-50F-ST-M**N-B5	KBB-50F-ST-M**N-C5	KBB-50F-ST-M**N-D5	KBB-50F-ST-M**N-E5
Type	KBB-50F-ST-M**B-25	KBB-50F-ST-M**B-35	KBB-50F-ST-M**B-45	KBB-50F-ST-M**B-55	KBB-50F-ST-M**B-65	KBB-50F-ST-M**B-75	KBB-50F-ST-M**B-85	KBB-50F-ST-M**B-95	KBB-50F-ST-M**B-A5	KBB-50F-ST-M**B-B5	KBB-50F-ST-M**B-C5	KBB-50F-ST-M**B-D5	KBB-50F-ST-M**B-E5
Stroke X (mm)	250	350	450	550	650	750	850	950	1050	1150	1250	1350	1450
Full length (mm)	693(730)	793(830)	893(930)	993(1030)	1093(1130)	1193(1230)	1293(1330)	1393(1430)	1493(1530)	1593(1630)	1693(1730)	1793(1830)	1893(1930)
Mass of axis (kg)	18.6(19.4)	20.5(21.3)	22.4(23.2)	24.3(25.1)	26.2(27.0)	28.1(28.9)	30.0(30.8)	31.9(32.7)	33.8(34.6)	35.7(36.5)	37.6(38.4)	39.5(40.3)	41.4(42.2)

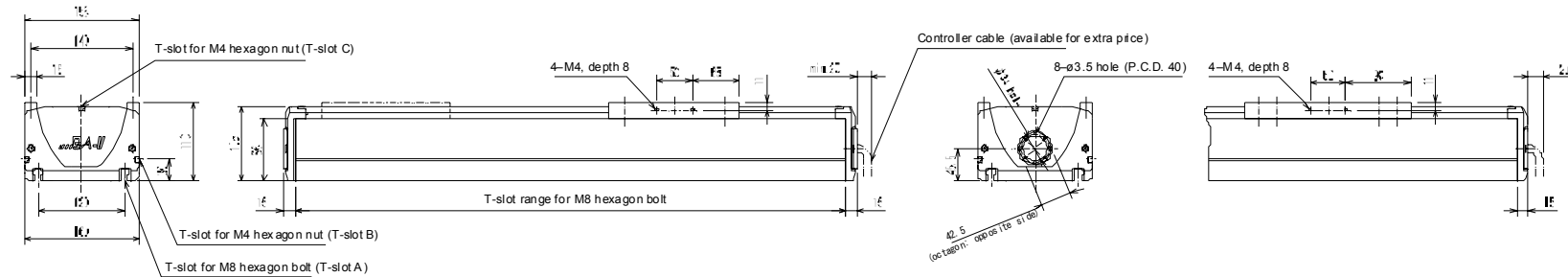
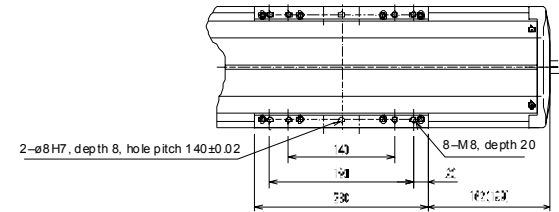
Note: The values in parentheses are applicable when the axis (actuator) is provided with brake.
 *** of the type signifies the lead of ball screw.
 (20 when the lead of ball screw is 20 mm, 10 when it is 10 mm, and 05 when it is 5 mm.)



[KBB-50F-ST-M***]



[KBB-50F-ST-L***]

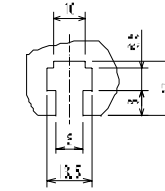


[KBB-50G-ST-***] (400 W absolute motor specifications)

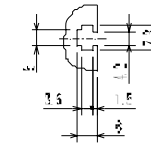
Type	KBB-50G-ST-M**N-20	KBB-50G-ST-M**N-30	KBB-50G-ST-M**N-40	KBB-50G-ST-M**N-50	KBB-50G-ST-M**N-60	KBB-50G-ST-M**N-70	KBB-50G-ST-M**N-80	KBB-50G-ST-M**N-90	KBB-50G-ST-M**N-A0	KBB-50G-ST-M**N-B0	KBB-50G-ST-M**N-C0	KBB-50G-ST-M**N-D0	KBB-50G-ST-M**N-E0	KBB-50G-ST-M**N-F0
Stroke X (mm)	200	300	400	500	600	700	800	900	1000	1100	1200	1300	1400	1500
Full length (mm)	630(665)	730(765)	830(865)	930(965)	1030(1065)	1130(1165)	1230(1265)	1330(1365)	1430(1465)	1530(1565)	1630(1665)	1730(1765)	1830(1865)	1930(1965)
Mass of axis(kg)	17.1(18.0)	19.0(19.9)	20.9(21.8)	22.8(23.7)	24.7(25.6)	26.6(27.5)	28.5(29.4)	30.4(31.3)	32.3(33.2)	34.2(35.1)	36.1(37.0)	38.0(38.9)	39.9(40.8)	41.8(42.7)
Type	KBB-50G-ST-M**N-25	KBB-50G-ST-M**N-35	KBB-50G-ST-M**N-45	KBB-50G-ST-M**N-55	KBB-50G-ST-M**N-65	KBB-50G-ST-M**N-75	KBB-50G-ST-M**N-85	KBB-50G-ST-M**N-95	KBB-50G-ST-M**N-A5	KBB-50G-ST-M**N-B5	KBB-50G-ST-M**N-C5	KBB-50G-ST-M**N-D5	KBB-50G-ST-M**N-E5	KBB-50G-ST-M**N-F5
Stroke X (mm)	250	350	450	550	650	750	850	950	1050	1150	1250	1350	1450	
Full length (mm)	730(765)	830(865)	930(965)	1030(1065)	1130(1165)	1230(1265)	1330(1365)	1430(1465)	1530(1565)	1630(1665)	1730(1765)	1830(1865)	1930(1965)	
Mass of axis(kg)	19.6(20.5)	21.5(22.4)	23.4(24.3)	25.3(26.2)	27.2(28.1)	29.1(30.0)	31.0(31.9)	32.9(33.8)	34.8(35.7)	36.7(37.6)	38.6(39.5)	40.5(41.4)	42.4(43.3)	

*** of the type signifies the lead of ball screw.

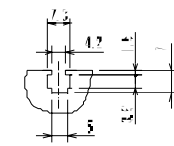
(20 when the lead of ball screw is 20 mm, 10 when it is 10 mm, and 05 when it is 5 mm.)



Detail of T-slot A

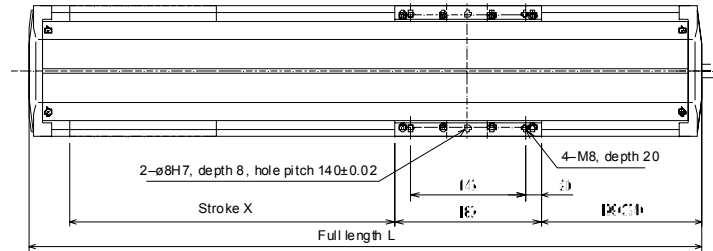


Detail of T-slot B

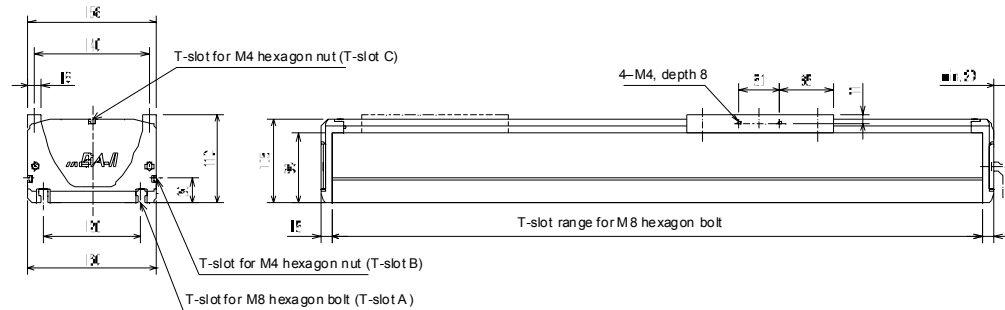
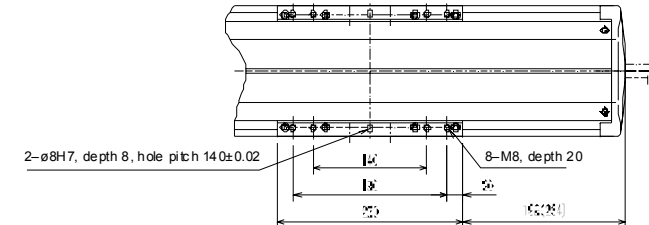


Detail of T-slot C

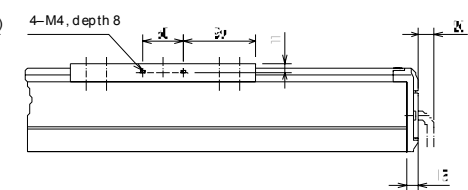
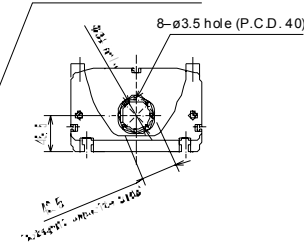
[KBB-50G-ST-M***]



[KBB-50G-ST-L***]



Controller cable (available for extra price)

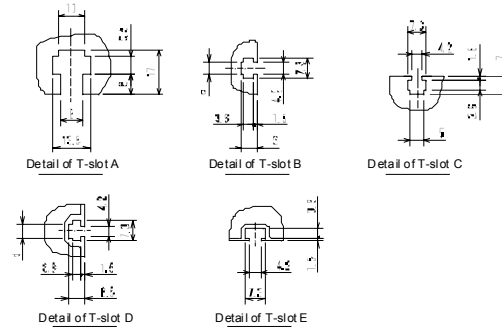


(2) Right side mounted motor axis

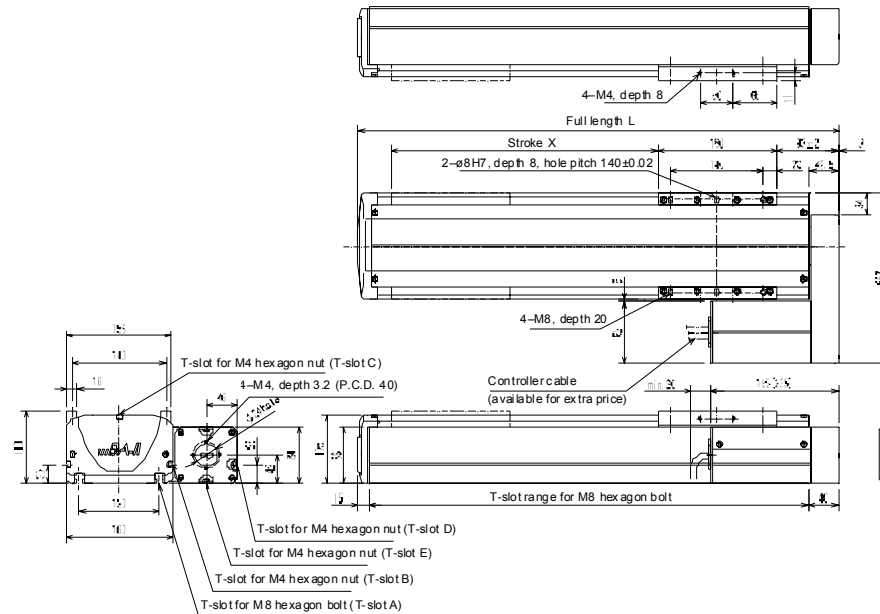
[KBB-50F-UR-***] (200 W absolute motor specifications)

Type	KBB-50F-UR-M**N-20	KBB-50F-UR-M**N-30	KBB-50F-UR-M**N-40	KBB-50F-UR-M**N-50	KBB-50F-UR-M**N-60	KBB-50F-UR-M**N-70	KBB-50F-UR-M**N-80	KBB-50F-UR-M**N-90	KBB-50F-UR-M**N-A0	KBB-50F-UR-M**N-B0	KBB-50F-UR-M**N-C0	KBB-50F-UR-M**N-D0	KBB-50F-UR-M**N-E0	KBB-50F-UR-M**N-F0
Stroke X (mm)	200	300	400	500	600	700	800	900	1000	1100	1200	1300	1400	1500
Full length (mm)	526	626	726	826	926	1026	1126	1226	1326	1426	1526	1626	1726	1826
Mass of ax is/kg	12.5(13.1)	14.4(15.0)	16.3(16.9)	18.2(18.8)	20.1(20.7)	22.0(22.6)	23.9(24.5)	25.8(26.4)	27.7(28.3)	29.6(30.2)	31.5(32.1)	33.4(34.0)	35.3(35.9)	37.2(37.8)
Type	KBB-50F-UR-M**B-25	KBB-50F-UR-M**B-35	KBB-50F-UR-M**B-45	KBB-50F-UR-M**B-55	KBB-50F-UR-M**B-65	KBB-50F-UR-M**B-75	KBB-50F-UR-M**B-85	KBB-50F-UR-M**B-95	KBB-50F-UR-M**B-A5	KBB-50F-UR-M**B-B5	KBB-50F-UR-M**B-C5	KBB-50F-UR-M**B-D5	KBB-50F-UR-M**B-E5	
Stroke X (mm)	250	350	450	550	650	750	850	950	1050	1150	1250	1350	1450	
Full length (mm)	626	726	826	926	1026	1126	1226	1326	1426	1526	1626	1726	1826	
Mass of ax is/kg	15.0(15.6)	16.9(17.5)	18.8(19.4)	20.7(21.3)	22.6(23.2)	24.5(25.1)	26.4(27.0)	28.3(28.9)	30.2(30.8)	32.1(32.7)	34.0(34.6)	35.9(36.5)	37.8(38.4)	

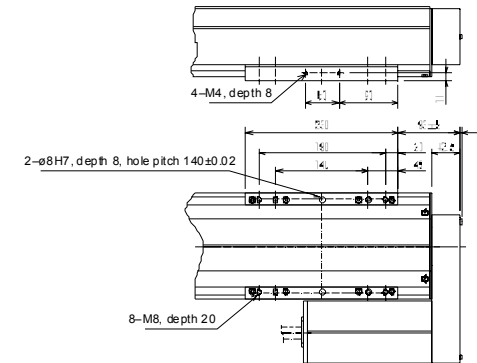
Note: The values in parentheses are applicable when the axis (actuator) is provided with brake.
 *** of the type signifies the lead of ball screw.
 (20 when the lead of ball screw is 20 mm, 10 when it is 10 mm, and 05 when it is 5 mm.)



[KBB-50F-UR-M***]



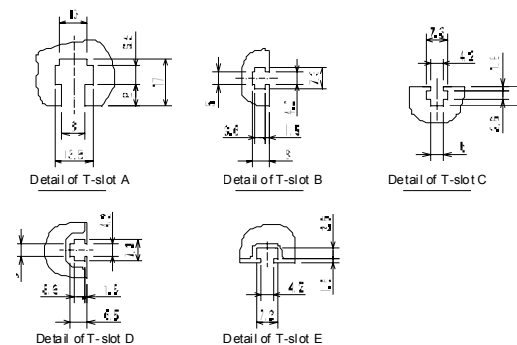
[KBB-50F-UR-L***]



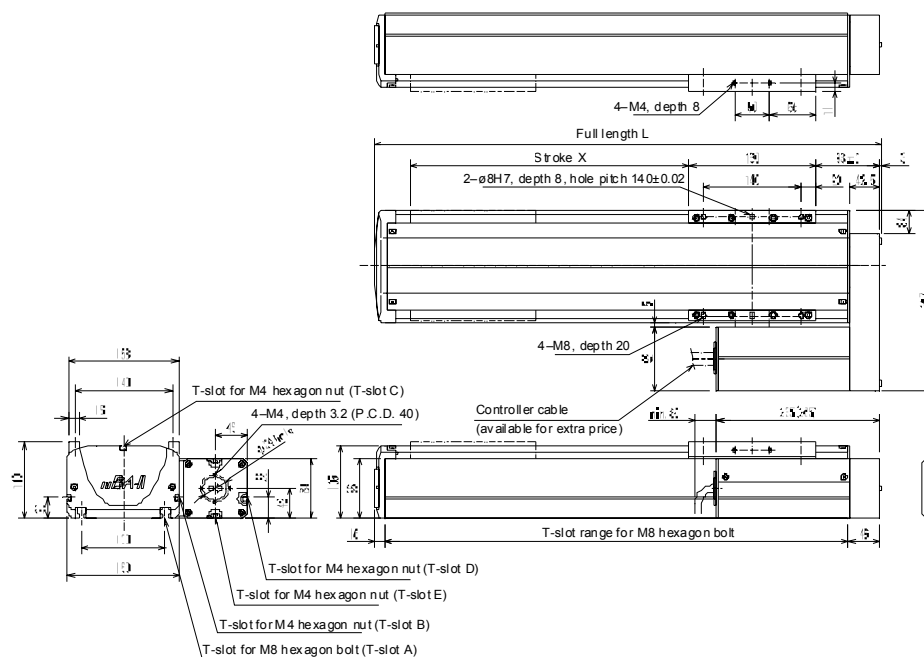
[KBB-50G-UR-***] (400 W absolute motor specifications)

Type	KBB-50G-UR-MwN1-20	KBB-50G-UR-MwN1-30	KBB-50G-UR-MwN1-40	KBB-50G-UR-MwN1-50	KBB-50G-UR-MwN1-60	KBB-50G-UR-MwN1-70	KBB-50G-UR-MwN1-80	KBB-50G-UR-MwN1-90	KBB-50G-UR-MwN1-A0	KBB-50G-UR-MwN1-B0	KBB-50G-UR-MwN1-C0	KBB-50G-UR-MwN1-D0	KBB-50G-UR-MwN1-E0	KBB-50G-UR-MwN1-F0
Stroke X (mm)	200	300	400	500	600	700	800	900	1000	1100	1200	1300	1400	1500
FULL length (mm)	526	626	726	826	926	1026	1126	1226	1326	1426	1526	1626	1726	1826
Mass of ax is/kg	12.5(13.1)	14.4(15.0)	16.3(16.9)	18.2(18.8)	20.1(20.7)	22.0(22.6)	23.9(24.5)	25.8(26.4)	27.7(28.3)	29.6(30.2)	31.5(32.1)	33.4(34.0)	35.3(35.9)	37.2(37.8)
Type	KBB-50G-UR-MwB1-25	KBB-50G-UR-MwB1-35	KBB-50G-UR-MwB1-45	KBB-50G-UR-MwB1-55	KBB-50G-UR-MwB1-65	KBB-50G-UR-MwB1-75	KBB-50G-UR-MwB1-85	KBB-50G-UR-MwB1-95	KBB-50G-UR-MwB1-A5	KBB-50G-UR-MwB1-B5	KBB-50G-UR-MwB1-C5	KBB-50G-UR-MwB1-D5	KBB-50G-UR-MwB1-E5	
Stroke X (mm)	250	350	450	550	650	750	850	950	1050	1150	1250	1350	1450	
Full length (mm)	626	726	826	926	1026	1126	1226	1326	1426	1526	1626	1726	1826	
Mass of ax is/kg	15.0(15.6)	16.9(17.5)	18.8(19.4)	20.7(21.3)	22.6(23.2)	24.5(25.1)	26.4(27.0)	28.3(28.9)	30.2(30.8)	32.1(32.7)	34.0(34.6)	35.9(36.5)	37.8(38.4)	

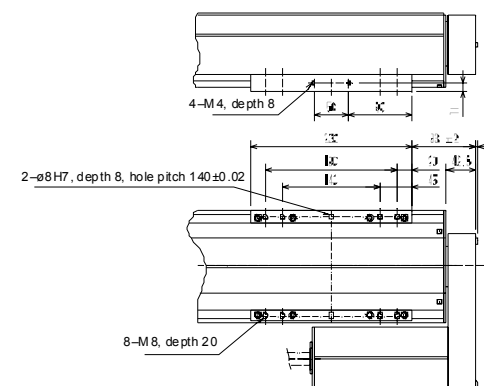
Note: The values in parentheses are applicable when the axis (actuator) is provided with brake.
 *** of the type signifies the lead of ball screw.
 (20 when the lead of ball screw is 20 mm, 10 when it is 10 mm, and 05 when it is 5 mm.)



[KBB-50G-UR-M***]



[KBB-50G-UR-L***]

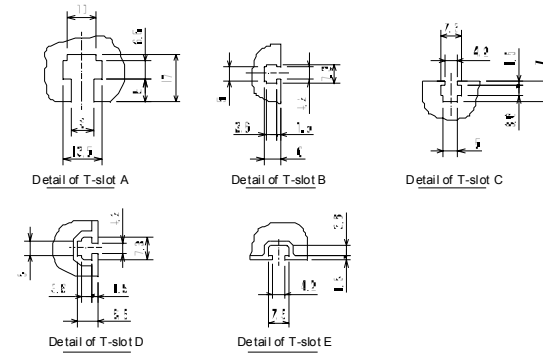


(3) Left side mounted motor axis

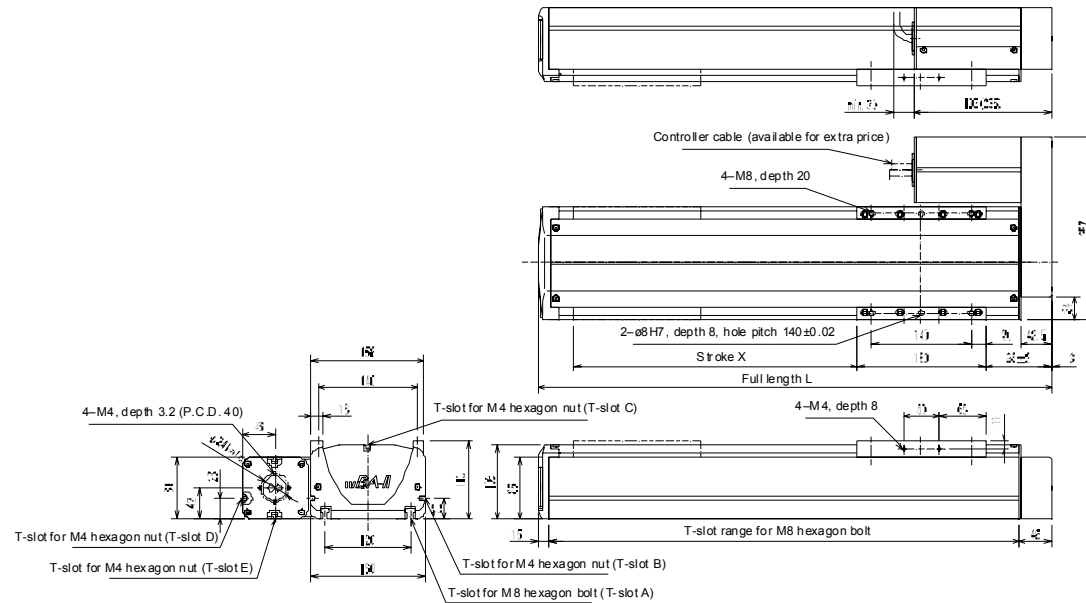
[KBB-50F-UL-***] (200 W absolute motor specifications)

Type	KBB-50F-UL-M**N-20	KBB-50F-UL-M**N-30	KBB-50F-UL-M**N-40	KBB-50F-UL-M**N-50	KBB-50F-UL-M**N-60	KBB-50F-UL-M**N-70	KBB-50F-UL-M**N-80	KBB-50F-UL-M**N-90	KBB-50F-UL-M**N-A0	KBB-50F-UL-M**N-B0	KBB-50F-UL-M**N-C0	KBB-50F-UL-M**N-D0	KBB-50F-UL-M**N-E0	KBB-50F-UL-M**N-F0
Stroke X (mm)	200	300	400	500	600	700	800	900	1000	1100	1200	1300	1400	1500
Full length (mm)	526	626	726	826	926	1026	1126	1226	1326	1426	1526	1626	1726	1826
Mass of axis(kg)	12.5(13.1)	14.4(15.0)	16.3(16.9)	18.2(18.8)	20.1(20.7)	22.0(22.6)	23.9(24.5)	25.8(26.4)	27.7(28.3)	29.6(30.2)	31.5(32.1)	33.4(34.0)	35.3(35.9)	37.2(37.8)
Type	KBB-50F-UL-M**B-25	KBB-50F-UL-M**B-35	KBB-50F-UL-M**B-45	KBB-50F-UL-M**B-55	KBB-50F-UL-M**B-65	KBB-50F-UL-M**B-75	KBB-50F-UL-M**B-85	KBB-50F-UL-M**B-95	KBB-50F-UL-M**B-A5	KBB-50F-UL-M**B-B5	KBB-50F-UL-M**B-C5	KBB-50F-UL-M**B-D5	KBB-50F-UL-M**B-E5	KBB-50F-UL-M**B-F5
Stroke X (mm)	250	350	450	550	650	750	850	950	1050	1150	1250	1350	1450	
Full length (mm)	626	726	826	926	1026	1126	1226	1326	1426	1526	1626	1726	1826	
Mass of axis(kg)	15.0(15.6)	16.9(17.5)	18.8(19.4)	20.7(21.3)	22.6(23.2)	24.5(25.1)	26.4(27.0)	28.3(28.9)	30.2(30.8)	32.1(32.7)	34.0(34.6)	35.9(36.5)	37.8(38.4)	

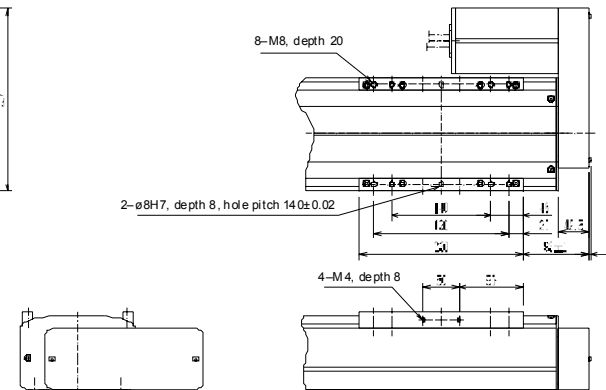
Note: The values in parentheses are applicable when the axis (actuator) is provided with brake.
 *** of the type signifies the lead of ball screw.
 (20 when the lead of ball screw is 20 mm, 10 when it is 10 mm, and 05 when it is 5 mm.)



[KBB-50F-UL-M***]



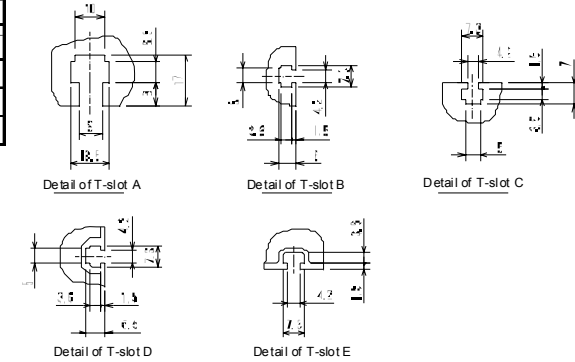
[KBB-50F-UL-L***]



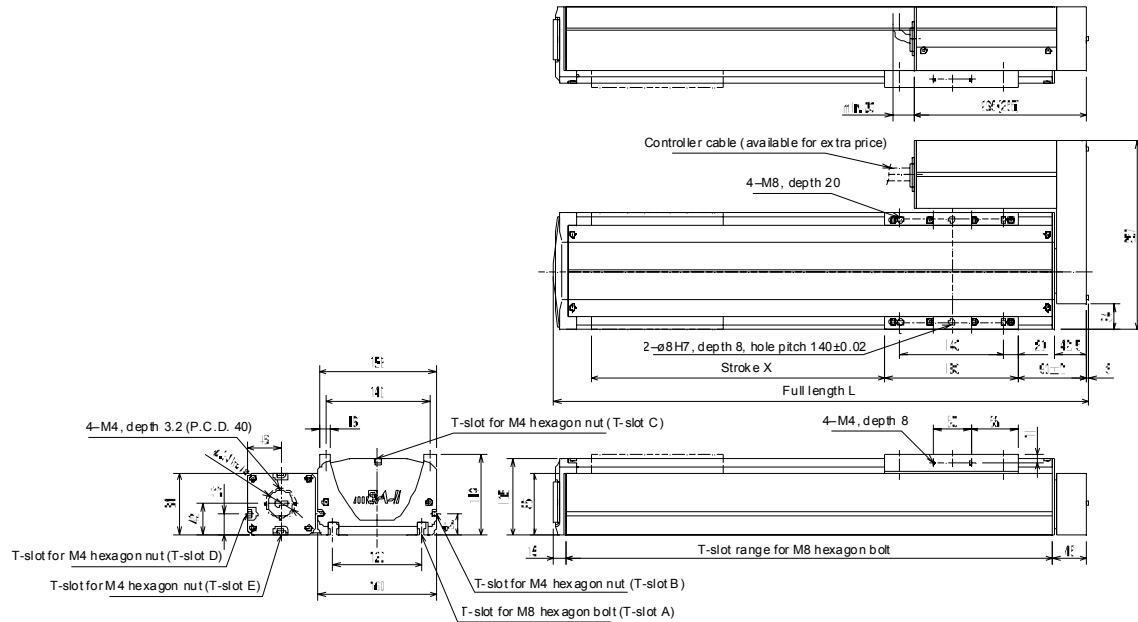
[KBB-50G-UL-***] (400 W absolute motor specifications)

Type	KBB-50G-UL-M**N-20	KBB-50G-UL-M**N-30	KBB-50G-UL-M**N-40	KBB-50G-UL-M**N-50	KBB-50G-UL-M**N-60	KBB-50G-UL-M**N-70	KBB-50G-UL-M**N-80	KBB-50G-UL-M**N-90	KBB-50G-UL-M**N-A0	KBB-50G-UL-M**N-B0	KBB-50G-UL-M**N-C0	KBB-50G-UL-M**N-D0	KBB-50G-UL-M**N-E0	KBB-50G-UL-M**N-F0
Stroke X (mm)	200	300	400	500	600	700	800	900	1000	1100	1200	1300	1400	1500
FUUI length (mm)	526	626	726	826	926	1026	1126	1226	1326	1426	1526	1626	1726	1826
Mass of ax is(kg)	12.5(13.1)	14.4(15.0)	16.3(16.9)	18.2(18.8)	20.1(20.7)	22.0(22.6)	23.9(24.5)	25.8(26.4)	27.7(28.3)	29.6(30.2)	31.5(32.1)	33.4(34.0)	35.3(35.9)	37.2(37.8)
Type	KBB-50G-UL-M**B-25	KBB-50G-UL-M**B-35	KBB-50G-UL-M**B-45	KBB-50G-UL-M**B-55	KBB-50G-UL-M**B-65	KBB-50G-UL-M**B-75	KBB-50G-UL-M**B-85	KBB-50G-UL-M**B-95	KBB-50G-UL-M**B-A5	KBB-50G-UL-M**B-B5	KBB-50G-UL-M**B-C5	KBB-50G-UL-M**B-D5	KBB-50G-UL-M**B-E5	KBB-50G-UL-M**B-F5
Stroke X (mm)	250	350	450	550	650	750	850	950	1050	1150	1250	1350	1450	1550
Full length (mm)	626	726	826	926	1026	1126	1226	1326	1426	1526	1626	1726	1826	1926
Mass of ax is(kg)	15.0(15.6)	16.9(17.5)	18.8(19.4)	20.7(21.3)	22.6(23.2)	24.5(25.1)	26.4(27.0)	28.3(28.9)	30.2(30.8)	32.1(32.7)	34.0(34.6)	35.9(36.5)	37.8(38.4)	39.7(40.3)

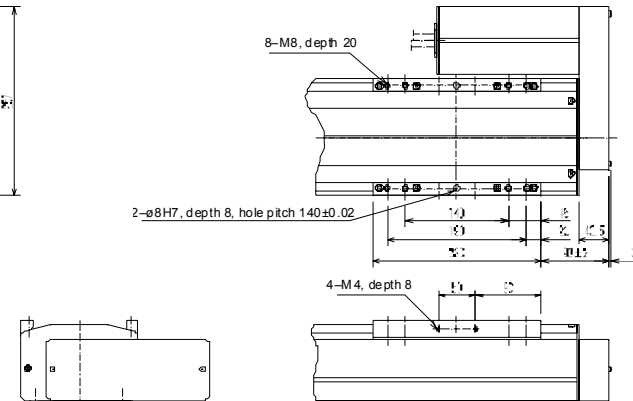
Note: The values in parentheses are applicable when the axis (actuator) is provided with brake.
 ** ** of the type signifies the lead of ball screw.
 (20 when the lead of ball screw is 20 mm, 10 when it is 10 mm, and 05 when it is 5 mm.)



[KBB-50G-UL-M***]



[KBB-50G-UL-L***]

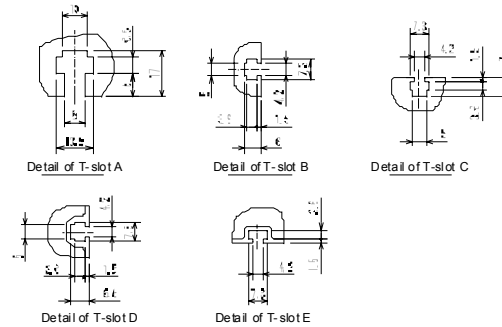


(4) Bottom side mounted motor axis

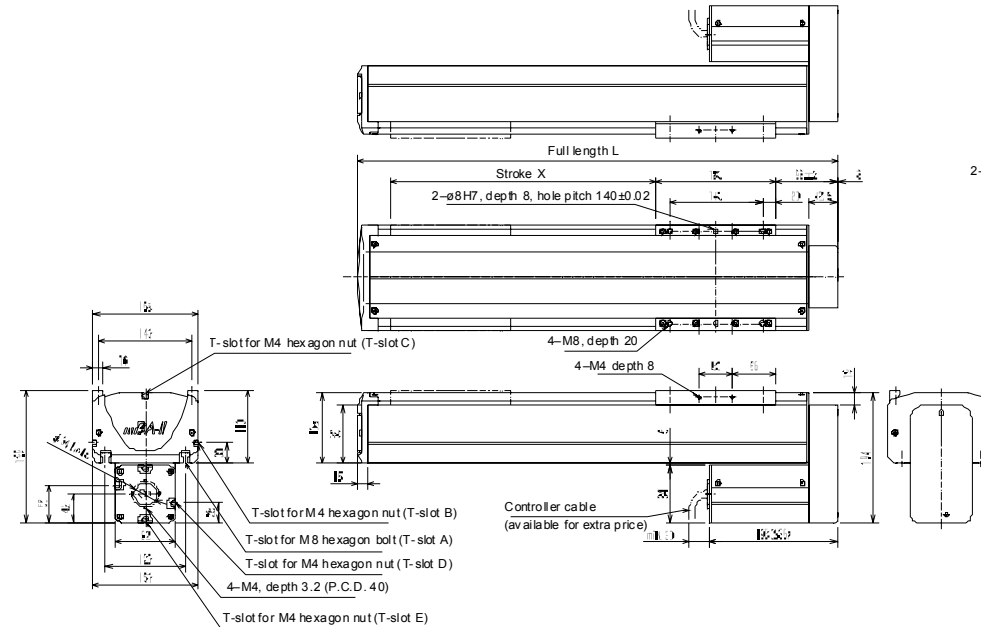
[KBB-50F-UU-***] (200 W absolute motor specifications)

Type	KBB-50F-UU-M**N-20	KBB-50F-UU-M**N-30	KBB-50F-UU-M**N-40	KBB-50F-UU-M**N-50	KBB-50F-UU-M**N-60	KBB-50F-UU-M**N-70	KBB-50F-UU-M**N-80	KBB-50F-UU-M**N-90	KBB-50F-UU-M**N-A0	KBB-50F-UU-M**N-B0	KBB-50F-UU-M**N-C0	KBB-50F-UU-M**N-D0	KBB-50F-UU-M**N-E0	KBB-50F-UU-M**N-F0
Stroke X (mm)	200	300	400	500	600	700	800	900	1000	1100	1200	1300	1400	1500
FUUL length (mm)	526	626	726	826	926	1026	1126	1226	1326	1426	1526	1626	1726	1826
Mass of axis (kg)	12.5(13.1)	14.4(15.0)	16.3(16.9)	18.2(18.8)	20.1(20.7)	22.0(22.6)	23.9(24.5)	25.8(26.4)	27.7(28.3)	29.6(30.2)	31.5(32.1)	33.4(34.0)	35.3(35.9)	37.2(37.8)
Type	KBB-50F-UU-M**N-25	KBB-50F-UU-M**N-35	KBB-50F-UU-M**N-45	KBB-50F-UU-M**N-55	KBB-50F-UU-M**N-65	KBB-50F-UU-M**N-75	KBB-50F-UU-M**N-85	KBB-50F-UU-M**N-95	KBB-50F-UU-M**N-A5	KBB-50F-UU-M**N-B5	KBB-50F-UU-M**N-C5	KBB-50F-UU-M**N-D5	KBB-50F-UU-M**N-E5	KBB-50F-UU-M**N-F5
Stroke X (mm)	250	350	450	550	650	750	850	950	1050	1150	1250	1350	1450	
Full length (mm)	626	726	826	926	1026	1126	1226	1326	1426	1526	1626	1726	1826	
Mass of axis (kg)	15.0(15.6)	16.9(17.5)	18.8(19.4)	20.7(21.3)	22.6(23.2)	24.5(25.1)	26.4(27.0)	28.3(28.9)	30.2(30.8)	32.1(32.7)	34.0(34.6)	35.9(36.5)	37.8(38.4)	
[Mass of axis (kg)]														

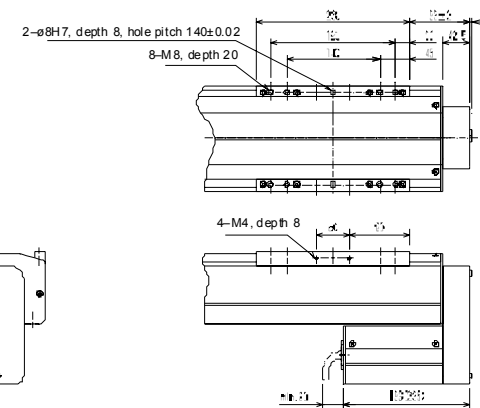
Note: The values in parentheses are applicable when the axis (actuator) is provided with brake.
 *** of the type signifies the lead of ball screw.
 (20 when the lead of ball screw is 20 mm, 10 when it is 10 mm, and 05 when it is 5 mm.)



[KBB-50F-UU-M***]



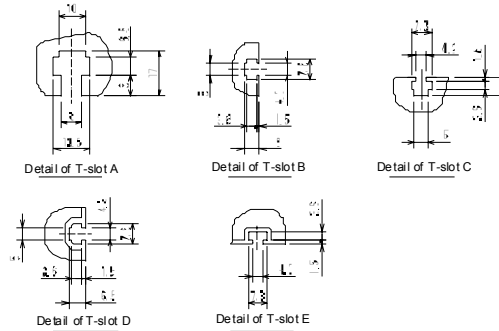
[KBB-50F-UU-L***]



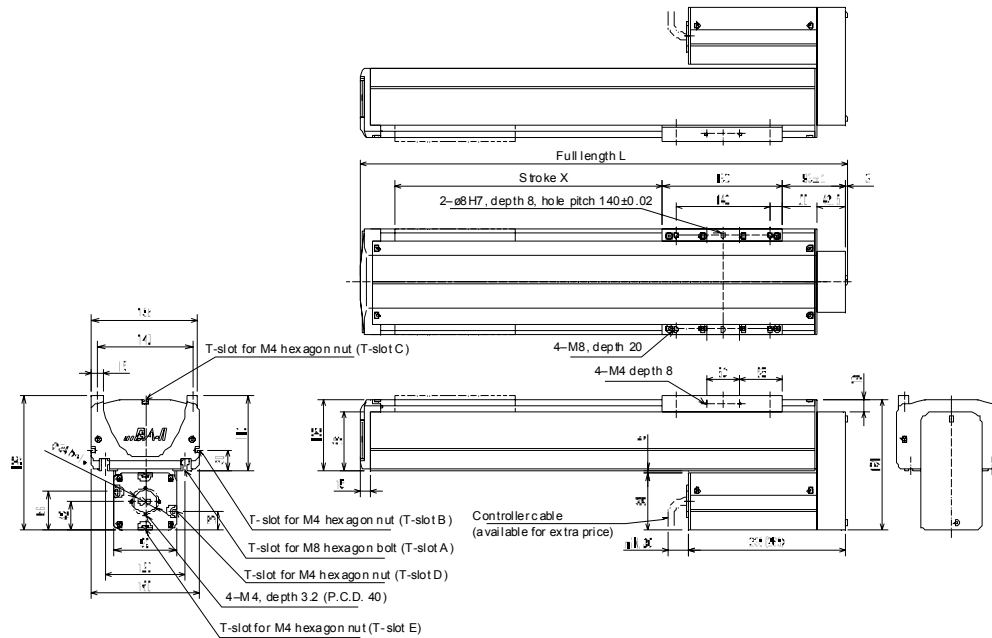
[KBB-50G-UU-***] (400 W absolute motor specifications)

Type	KBB-50F-UU-M+N-20	KBB-50F-UU-M+N-30	KBB-50F-UU-M+N-40	KBB-50F-UU-M+N-50	KBB-50F-UU-M+N-60	KBB-50F-UU-M+N-70	KBB-50F-UU-M+N-80	KBB-50F-UU-M+N-90	KBB-50F-UU-M+N-A0	KBB-50F-UU-M+N-B0	KBB-50F-UU-M+N-C0	KBB-50F-UU-M+N-D0	KBB-50F-UU-M+N-E0	KBB-50F-UU-M+N-F0
Stroke X (mm)	200	300	400	500	600	700	800	900	1000	1100	1200	1300	1400	1500
FULL length (mm)	526	626	726	826	926	1026	1126	1226	1326	1426	1526	1626	1726	1826
Mass of axis (kg)	12.5(13.1)	14.4(15.0)	16.3(16.9)	18.2(18.8)	20.1(20.7)	22.0(22.6)	23.9(24.5)	25.8(26.4)	27.7(28.3)	29.6(30.2)	31.5(32.1)	33.4(34.0)	35.3(35.9)	37.2(37.8)
Type	KBB-50F-UU-M+N-25	KBB-50F-UU-M+N-35	KBB-50F-UU-M+N-45	KBB-50F-UU-M+N-55	KBB-50F-UU-M+N-65	KBB-50F-UU-M+N-75	KBB-50F-UU-M+N-85	KBB-50F-UU-M+N-95	KBB-50F-UU-M+N-A5	KBB-50F-UU-M+N-B5	KBB-50F-UU-M+N-C5	KBB-50F-UU-M+N-D5	KBB-50F-UU-M+N-E5	KBB-50F-UU-M+N-F5
Stroke X (mm)	250	350	450	550	650	750	850	950	1050	1150	1250	1350	1450	1550
Full length (mm)	626	726	826	926	1026	1126	1226	1326	1426	1526	1626	1726	1826	1926
Mass of axis (kg)	15.0(15.6)	16.9(17.5)	18.8(19.4)	20.7(21.3)	22.6(23.2)	24.5(25.1)	26.4(27.0)	28.3(28.9)	30.2(30.8)	32.1(32.7)	34.0(34.6)	35.9(36.5)	37.8(38.4)	39.7(40.3)

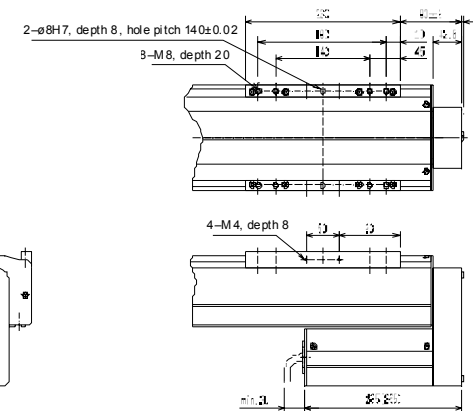
Note: The values in parentheses are applicable when the axis (actuator) is provided with brake.
 *** of the type signifies the lead of ball screw.
 (20 when the lead of ball screw is 20 mm, 10 when it is 10 mm, and 05 when it is 5 mm.)



[KBB-50G-UU-M***]



[KBB-50G-UU-L***]



Section 4 Maintenance

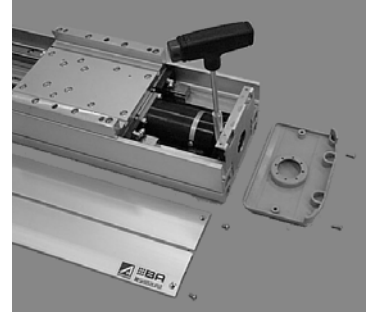
For the basic maintenance and inspection, see Section 5 of the instruction manual (installation of actuator) provided separately.

4.1 Motor Replacement Procedures

Replace the motor in the following manner.

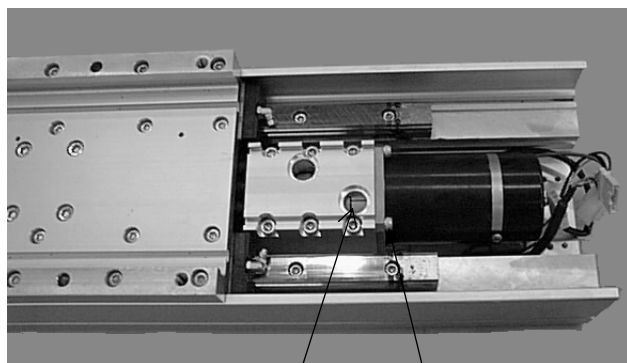
4.1.1 Straight Motor Axis

- (1) Remove the frame cover, end cover and end plate.



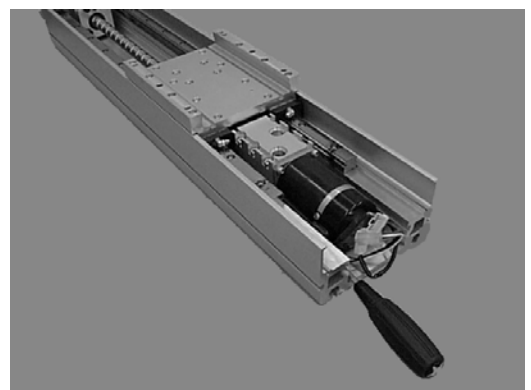
Be sure to turn the power off before starting the work.

- (2) Loosen the bolts on the motor output shaft side of the coupling. (DO NOT loosen the bolts on the ball screw side.)
 - Unless you cannot loosen the coupling bolt for the braked axis (actuator), contact our sales agent in your territory.



Bolt on motor output
shaft side

Motor set screw



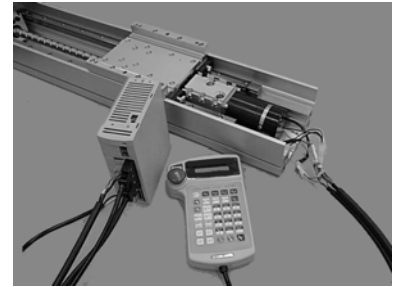
Discontinue

- (3) Disengage the motor from the axis (actuator).
- (4) Mount a new motor at the same position so that the motor lead wires face downward.
(DO NOT tighten the set bolt of the coupling at this point of time.)
- (5) Temporarily connect the axis (actuator) and controller.
- (6) Connect the teach pendant with the controller and perform home return.

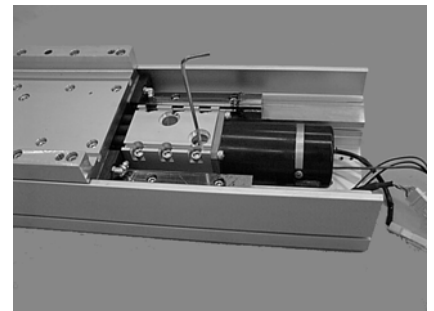


Before the home return, set both the position and speed servo gain values to zero (0).

For the setting procedures, see Para. 11.3.3 of the instruction manual (basic) provided separately.

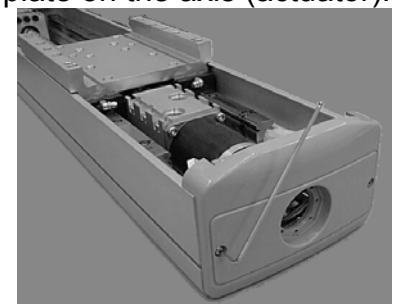


- (7) The motor starts revolving. Move the slider by hand to the vicinity of the home point.
(Turn on the home point sensor.)
- (8) After the motor has stopped (i.e., after the motor has returned to the home point), move the slider so that it can be located at a position of [Dimension "C" in Para. 4.3 + 100 mm]. Then turn off the controller power and tighten the set bolt of the coupling. (Clamping torque: 3.4 N·m) (See Para. 4.3.)



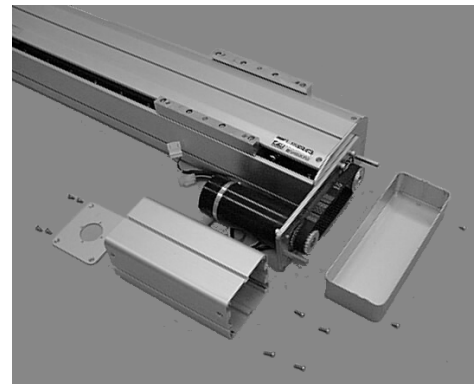
Be sure to turn off the controller power before clamping the set bolt of the coupling.

- (9) Turn the power on again, set each servo gain value to the original value, then confirm the home return. After the confirmation, turn the power off and disconnect the controller cable.
- (10) Mount the frame cover, end cover and end plate on the axis (actuator).



4.1.2 Side Mounted Motor Axis

- (1) Remove the covers.



Be sure to turn the power off before starting the work.

- (2) Loosen the four (4) motor plate set bolts and remove the belt.

Motor plate set bolt (4 pcs. in total)



- (3) Remove the motor and install a new motor at the same position so that the motor lead wires can face the axis (actuator) side (right/left side mounted motor) or face crosswise (bottom side mounted motor).
- (4) Temporarily connect the axis (actuator) and controller, then connect the teach pendant.
- (5) Turn on the controller power and perform the home return operation.



Before the home return, set both the position and speed servo gain values to zero (0).

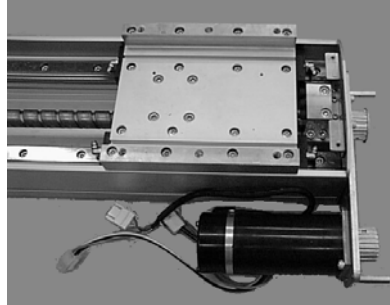
For the setting procedures, see Para. 11.3.3 of the instruction manual (basic) provided separately.



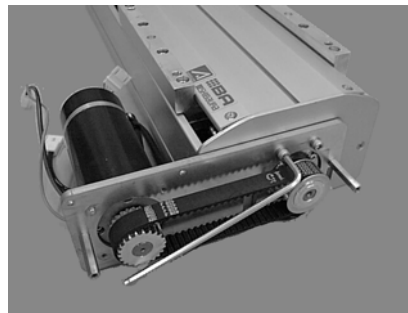
The motor will start. NEVER touch the toothed pulley.

Discontinue

- (6) The motor starts revolving. Move the slider to the vicinity of the home point while taking utmost care not to touch the revolving part.
- (7) After the motor has stopped (i.e., after the motor has returned to the home point), move the slider so that the clearance between the slider and motor block can be 11 mm (i.e., reference home position). (See Para. 4.3.)



- (8) Turn off the controller power and set the belt so that the relative positions of the toothed pulleys on the ball screw side and motor side will not shift. Then tighten the motor plate set bolts while pulling the motor plate with the force of about 78 N (8 kgf).

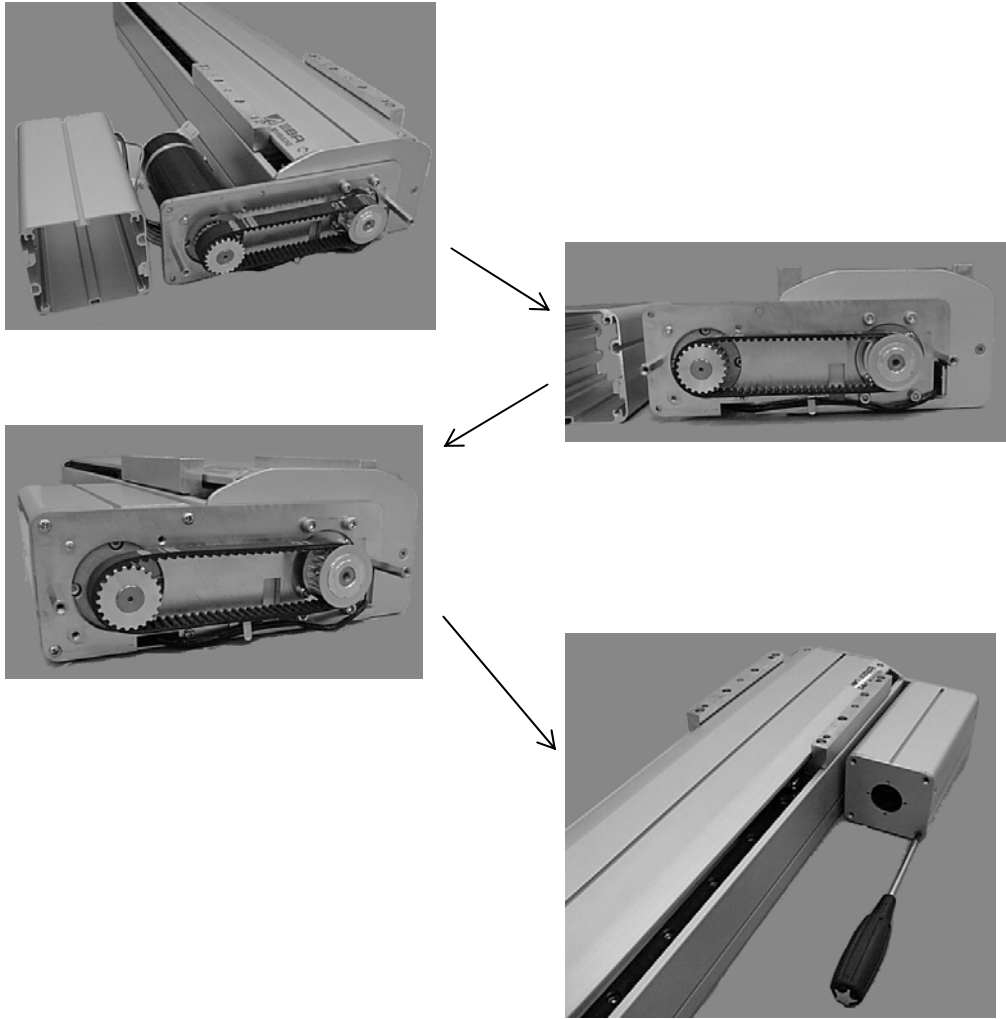


Be sure to turn off the controller power before engaging the belt.

- (9) Turn the power on again, set each servo gain value to the original value, then confirm the home return.
- (10) Turn off the controller power and disconnect the controller cable.

- (11) Mount the motor cover and motor cover plate as shown below.

Discontinue



(12) Mount the belt cover.

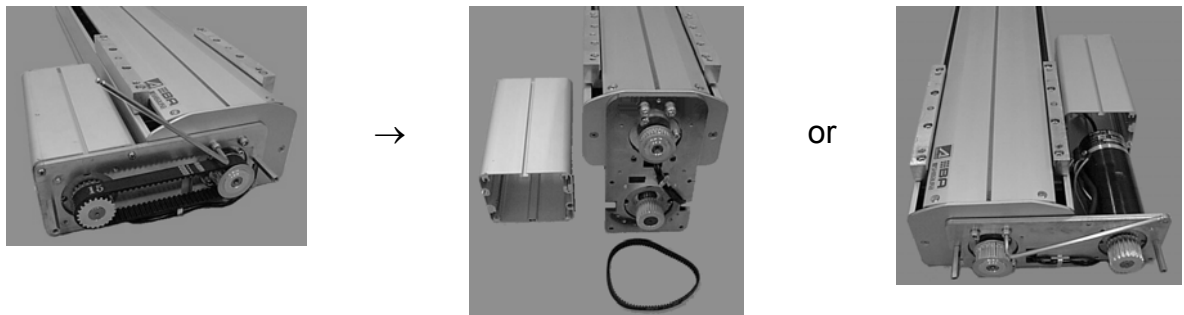
4.2 Changing Side Mounted Motor Direction

When the side mounted motor direction (left, right or bottom) has to be changed, observe the following steps.

For the right and left directions, the common parts are used and no additional part is required to change the direction.

For the bottom direction, the motor plate, belt and belt cover differ from the above.

- (1) Remove the covers. (See Step (1) of Para. 4.1.2.)
- (2) Remove the belt. (See Step (2) of Para. 4.1.2.)
- (3) Remove the motor plate set bolts, mount the motor plate in the designated direction, then temporarily tighten the same bolts.
To change the right/left direction, turn over the motor plate and mount it.



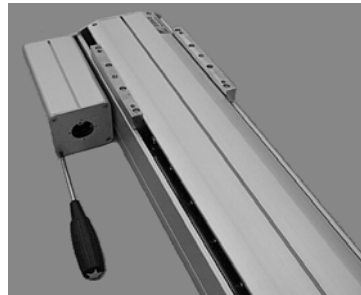
- (4) Temporarily connect the controller cable, adjust the home point, then carry out Steps (4) through (10) of Para. 4.1.2.
- (5) Mount the motor cover and motor cover plate, referring to the following photos.

[Bottom side mounted motor]

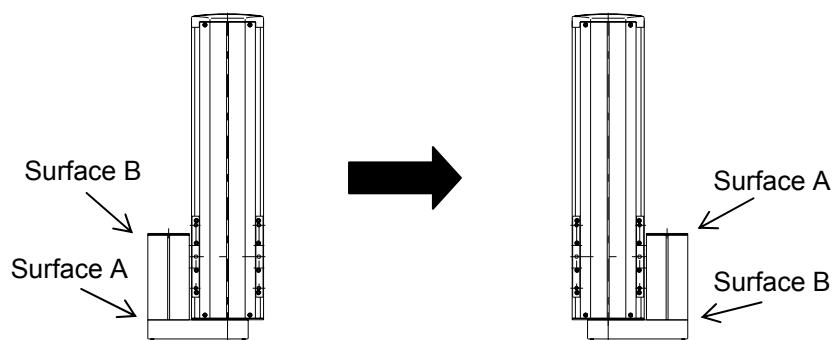


Discontinue

[Left side mounted motor]



Note: The set surface of the motor cover is reversed for the right side mounted motor axis and left side mounted motor axis.



[Right side mounted motor]

See Step (11) of Para. 4.1.2.

6) Mount the belt cover.

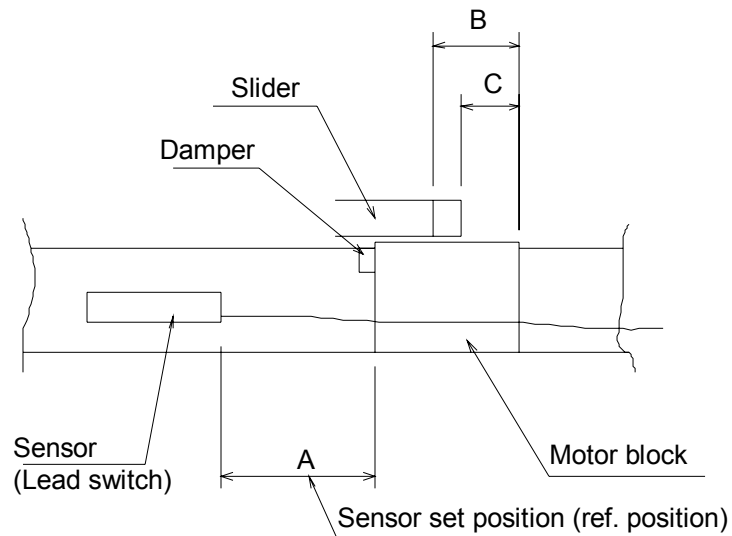
4.3 Adjusting Home Point

To adjust the home position, observe the following procedures.

- (1) When the home point sensor is ON (see Note below), each slider position at the home point should be as follows:

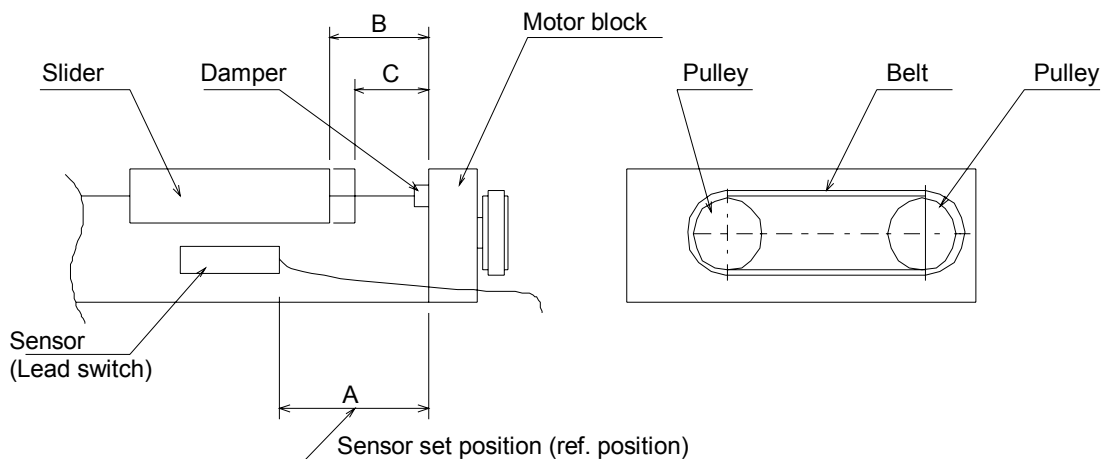
[1] Straight axis

	Sensor set position (ref.)	Home point sensor ON position	Reference home position
Applicable axis	A	B	C
KBB-50F-ST-M10 (20) KBB-50G-ST-M10 (20)	35 mm	11 mm	6 mm
KBB-50F-ST-M05 KBB-50G-ST-M05	33 mm	9 mm	6 mm
KBB-50F-ST-L10 (20) KBB-50G-ST-L10 (20)	85 mm	11 mm	6 mm
KBB-50F-ST-L05 KBB-50G-ST-L05	83 mm	9 mm	6 mm



[2] Side mounted motor axis

	Sensor set position (ref.)	Home point sensor ON position	Reference home position
Applicable axis	A	B	C
KBB-50F-U*-M10 (20) KBB-50G-U*-M10 (20)	122 mm	16 mm	11 mm
KBB-50F-U*-M05 KBB-50G-U*-M05	120 mm	14 mm	11 mm
KBB-50F-U*-L10 (20) KBB-50G-U*-L10 (20)	172 mm	16 mm	11 mm
KBB-50F-U*-L05 KBB-50G-U*-L05	170 mm	14 mm	11 mm



Note: As the home point sensor uses a lead switch of normal close contact specifications, it is OFF electrically. To facilitate the reader's understanding, however, it is expressed as "ON" in this manual.

The minus (–) overrun position is the position where the slider will not move any further in the motor direction after it comes into contact with the motor block damper. Normally, the position approximately 5 mm toward the motor direction from the reference home position becomes the minus (–) overrun position.

Note

The home point sensor should always be ON even if the slider is located at the minus (–) overrun position. If the sensor is OFF when the slider is at the minus (–) overrun position, home return from this position is not possible.

- (2) The home point is located at either end of the axis. If the axis apex serves as the home point, a home point change sensor (option) is necessary.

If the home point has to be changed to the vicinity of the stroke center, be sure to mount a stopper at a position about 5 mm of the overrun length from the home point stop position. The length from the home point sensor ON position to the home point stop position should be 5 mm (when the lead of ball screw is 10 mm or 20 mm) or 3 mm (when the lead of ball screw is 5 mm).

[How to confirm slider position when home point sensor is ON]

Discontinue

- Turn off the controller power, move the slider 50 to 100 mm from the home position, turn the power on, then perform home return. (When the axis (actuator) is equipped with a brake, perform home return in the JOG mode after turning on the controller power.)
 - The position where the slider speed changes (from mid speed to low speed) during home return operation becomes the home point sensor ON position.
In this occasion, the slider will not stop until the home return completes (i.e., phase Z is detected). (The slider will not stop at the home point sensor ON position.)
- If the slider has to be stopped at the home point sensor ON position and exact confirmation of this is necessary, observe the following steps.
1. Change the home return method from the phase Z detection to the sensor detection.
To change the method, change the value of No.7 (home return method) of parameter 2 from "0" to "1" through the teach pendant. (For details, see Para. 11.4 of the instruction manual (basic) provided separately.)
 2. Turn off the controller power, move the slider 50 mm to 100 mm from the home position, turn the power on, then perform home return. (When the axis (actuator) is equipped with a brake, perform home return in the JOG mode after turning on the controller power.)
 3. The position where the slider has stopped after finish of the home return becomes the home point sensor ON position.
(In the sensor detection system, the sensor ON position is the home point.)



After the confirmation, be sure to return the home return method to the phase Z detection.

- In addition to the above, the home point sensor ON position can be confirmed in the following manner, only when the axis (actuator) is not provided with a brake.
1. Connect the teach pendant, set the axis (actuator) in the servo-free status, then call the home point sensor monitor screen.
 2. Gradually move the axis slider by manual operation from the vicinity of the stroke center to near the home point. Make sure of the position where the home point sensor on the monitor screen of the teach pendant is ON. (See Para. 12.5 of the instruction manual (basic) provided separately.)

[Move of home point sensor]

- Compare the home point sensor ON position of the slider with length "B" in Para. 4.3. Move the home point sensor position by only the difference between them.

4.4 Belt Replacement Procedures

Replace the belt of the side mounted motor axis in the following manner.

- (1) Remove the belt cover, loosen the motor plate set bolts and remove the belt.



Be sure to turn the power off before starting the work.

- (2) Turn on the controller power and perform home return.

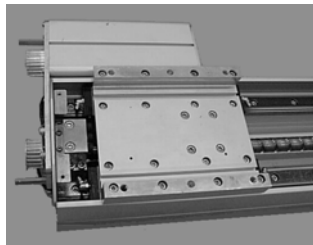


Before the home return, set both the position and speed servo gain values to zero (0).

For the setting procedures, see Para. 11.3.3 of the instruction manual (basic) provided separately.

The motor will start. NEVER touch the toothed pulley.

- (3) The motor starts revolving. Move the slider to the reference home position (i.e., the clearance between the motor block and slider is 11 mm) while taking careful precautions not to touch the revolving part by hand. The home return will finish and the motor will stop. (See Para. 4.3.)



- (4) Mount the belt, referring to Steps (8) and (9) of Para. 4.1.2 above.
- (5) Mount the belt cover.

4.5 Replacing Ball Screw

- If replacement of the ball screw is required, contact our sales agent in your territory. NEVER replace the ball screw by the customer.
- Only the ball screw built in a single actuator can be replaced. Replacement of the ball screw built in the machine or combined with other equipment is not possible.

4.6 Replacing Linear Guide

- Like the ball screw, if the linear guide needs to be replaced, contact our sales agent in your territory.

Section 5 Spare Parts

5.1 Spare Parts

If the robot went wrong, but no repair part is available at hand, it cannot be repaired even if a trouble has been found at an early stage. To avoid this, it is recommended that each customer keep the spare parts at hand.

No.	Part name	Description
1	Timing belt	The belt differs between the right/left side mounted axis and the bottom side mounted axis.
2	AC servo motor (Absolute encoder)	For straight axis (200 W)
3	AC servo motor with brake (Absolute encoder)	For straight axis with brake (200 W)
4	AC servo motor with pulley (Absolute encoder)	For all side mounted motor axes (200 W)
5	AC servo motor with brake and pulley (Absolute encoder)	For all side mounted motor axes with brakes (200 W)
6	AC servo motor (Absolute encoder)	For straight axis (400 W)
7	AC servo motor with brake (Absolute encoder)	For straight axis with brake (400 W)
8	AC servo motor with pulley (Absolute encoder)	For all side mounted motor axes (400 W)
9	AC servo motor with brake and pulley (Absolute encoder)	For all side mounted motor axes with brakes (400 W)