



OWNER/OPERATOR MANUAL

REFRIGERATED(COMPRESSED) AIR DRYER Xeroaqua G-Series

GT5055
GT5075
GT7055
GT7075
GT7095
GT7120
GT7150
GT7200
GT7250
GT7300
GT7400
GT7480

- Be sure to read this manual before operating your dryer.
- Keep this manual within the reach of an operator all the time.

C K D Corporation

06-08 4th edition SM-12304-A



Safety instructions

This dryer must be operated by a person who has basic knowledge of electric, compressed air, liquid, piping, refrigerant, etc. We are not responsible for any accidents caused when a person who does not have the basic knowledge or who is not well trained installation, operation, repair, etc.

Improper operation may cause poor performance of the dryer or may cause accidents.

We applied a variety of safety measures to our dryers, but improper handling of dryers could cause accidents. Thus, be sure to read and fully understand this manual before using them.

"Keep this manual together with the dryer".

Caution for safety

Cautions at operation are indicated in the following two ways.



WARNING



CAUTION



WARNING

used when improper handling could kill or seriously harm operators



CAUTION

used when improper handling could harm operators or damage objects



WARNING: ROTATION

★The fan may start rotating suddenly and may be harmful.
Do not put your hands or objects into the fan area.

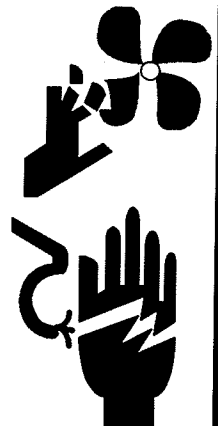
●Be sure to turn off the power before inspection.



WARNING: ELECTRICAL SHOCK

★Power supply terminal box, switches, etc. may cause you electrical shock.

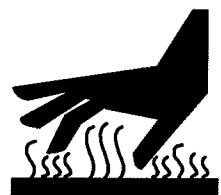
●Be sure to turn off the power before inspection. Do not operate the dryer with your wet hands.



CAUTION: HIGH TEMPERATURE

★The dryer is hot for a while after shut down the dryer.

●Be sure to turn off the power and to confirm that dryer becomes cool before inspection.



CAUTION: FOOT HOLD

★You could fall if you climb on the panel.

●Do not climb on the panel.



EARTH CONNECTION

★Be sure to connect earth to prevent electrical shock.



This dryer is industrials. Be sure to fully attend to using the dryer.

Table of Contents

Safety instructions

1. Introduction	1
2. Warranty	1
3. Cautions	2
4. Component locations	3
4.1 Structure	3,4,5
4.2 Operating panel	6
4.3 Electric box	7,8
5. Description	9
5.1 System diagram	10,11,12
6. Startup and operation	13
6.1 Startup	13
6.2 Operation	13
6.3 Shutdown the dryer	13
6.4 Safety device activation	14
6.4.1 Safety devices	14~17
6.4.2 Reset for the alarm	18
7. Trouble shooting	19,20

1. Introduction

Thank you very much for purchasing our refrigerated air dryer, Xeroaqua G Series.

This manual explains basic points of operation to have our dryer performs at their best.

Be sure to read this manual before using your dryer.

Keep this manual together with the dryer.

2. Warranty

Assure next contents.

(1) Warranty period

One year from the date of purchase (date on delivery or invoice date).

(2) Repair free of charge (Note: applied dryers to use in Japan)

- a. We will repair your dryer free of charge during the warranty period if it breaks down and is used properly as indicated in this manual and labels on your dryer.
- b. We will charge you repair service fee even during our warranty period if the following apply.
 - * breakdown or damage due to improper operation, repair, or remodeling.
 - * breakdown or damage due to relocation after installation, drop, or transportation damage.
 - * breakdown or damage due to transportation by automobile, ship, etc.
 - * breakdown or damage due to fire, earthquake, flood, thunder, other natural disaster, pollution, salt hazard, gas hazard, abnormal voltage, abnormal water pressure or quality, congelation, or other external causes.
 - * breakdown or damage not caused by your dryer.
 - * travel expense



Warranty valid is only in Japan.

(3) After warranty expiration

Repair costs are needed for you.

(4) Periodical inspection (charge)

Ask us for this service.

(5) No second compensations

Our warranty policy is covered only for our products. We do not compensate for other equipments, products or compensation for business what are caused by this machine's accidents or failures. Please protect second compensations by your warning systems or nonlife insurances.



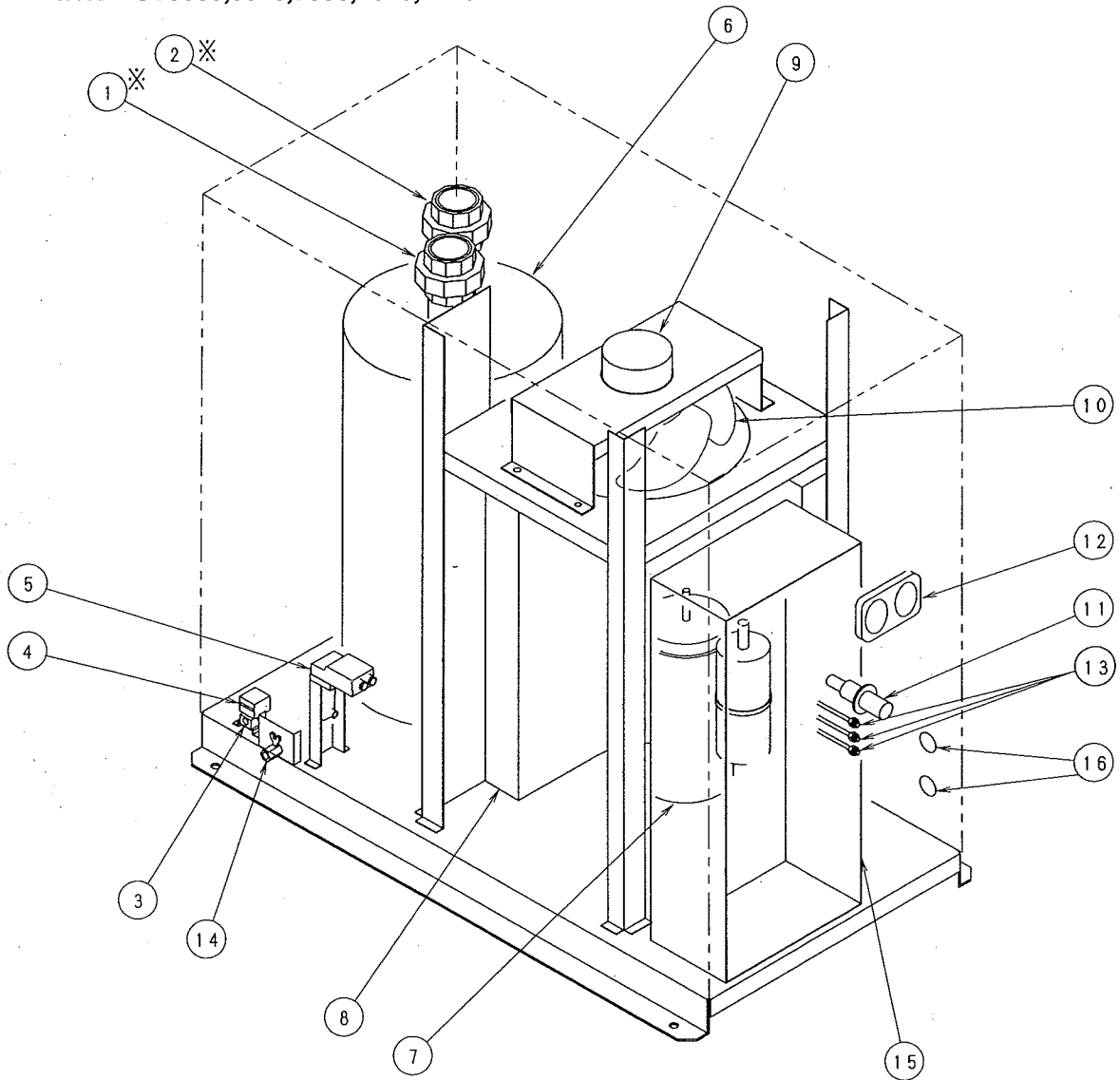
3. Cautions

- 1) Please use the dryer in the specification of operation range.
*Operation may stop or the product's life time shorten.
- 2) Turn on the power supply 4 hours before operation.(GT5075,7150,7200,7250,7300,7400,7480)
*A crank case heater is built in the dryer to protect the refrigeration compressor.
- 3) Before operation, check pressures by these refrigerant pressure gauges.
If the temperature transrated from refrigerant pressure gages are almost same as ambient temperature, it is determined.
*If these indications are lower than ambient temperature, it is possible to leak refrigerant gas.
Thus, turn off the power supply and referring to trouble shooting.
- 4) Check the indicator of dew point during operation.
*If the yellow lamp of the indicator turns on, operation will be stopped.
- 5) Do not turn on and turn off the dryer frequently more than 6 times an hour.
Keep it running 5 minutes or more before turning it off and hold restarting it on 5 minutes or longer.
*Break-down or shorter life time of the product may result.
- 6) This dryer has a security function for momentary power failure what is produced by lighting ETC. Reactivate the dryer immediately after power recovery, if instantaneous power failure is less than 0.5 seconds. Also, reactivate the dryer 3 minutes later after power recovery, if instantaneous power failure is less than 2 seconds.
Do not operate with 5 minutes after stop this dryer, because the restart prevention circuit is operated.
- 7) Remote start terminal D1-D2 is alternate non-voltage input. (GT5055,5075,7055,7075,7095,7120,7150,7200,7250)
Remote start terminal D1-D2 and remote stop terminal D3-D4 are momentary non-voltage input.(GT7300,7400,7480)
- 8) Do not touch any parts, wires, terminals or piping in side of the dryer.
*Causes of an electric shock or a fire.
- 9) Do not remodel this dryer.
*Break-down or shorter life time of the product may result. If you did, the warranty is expired.
- 10) If emergency stop occurs during operation, remove the cause of abnormal conditions referring to the trouble shooting.
*If the emergency stop occurs repeatedly, this may cause the dryer to malfunction.
- 11) Discharge drain and sludge accumulated in the heat exchangers and drain pipes when you turn off the dryer.
Thus, turn on the manual drain switch 10 second or longer and open the manual drain valve 10 second or longer.
- 12) Please open the manual drain valve once or twice of about ten seconds a week, because contaminant that is accumulated in the pressure vessel need to be exhausted.
- 13) Do not use the dryer for pneumatic caisson shield or respiratory medical equipment.
*It could cause an accident includes injury.
- 14) Do not use the dryer for transportation devices such as automobile, ship etc.
*Vibration could be a cause of break down of the internal components.

4. Component locations

4.1 Structure

4.1.1 GT5055,5075,7055,7075,7120



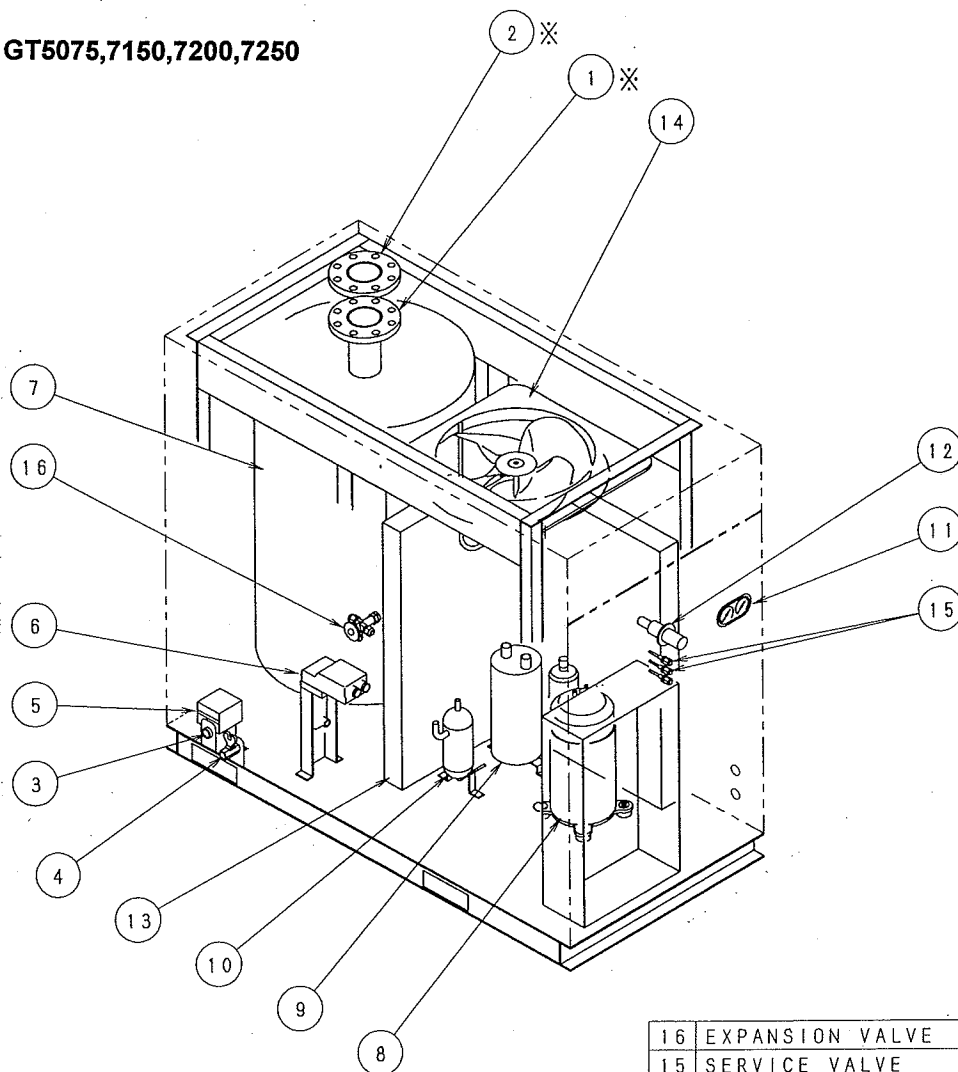
※ Air inlet and outlet

GT5055,7055,7075 : Rc2(Union)

GT7095,7120 : 2 $\frac{1}{2}$ "B 10K Flange

16	POWER SOURCE HOLE	2
15	ELECTRIC BOX	1
14	MANUAL DRAIN OUTLET	1
13	SERVICE VALVE	3
12	REFRIG. PRESS. GAUGE	1
11	HOT GAS BY-PASSVALVE	1
10	FAN BLADE	1
9	FAN MOTOR	1
8	CONDENSER	1
7	REFRIG. COMPRESSOR	1
6	HEAT EXCHANGER	1
5	DRAIN SENSOR	1
4	SOLENOID VALVE	1
3	DRAIN OUTLET	1
2	AIR OUTLET	1
1	AIR INLET	1
No.	PARTS	Q'TY

4.1.2 GT5075,7150,7200,7250



16	EXPANSION VALVE	1
15	SERVICE VALVE	3
14	FAN MOTOR	1
13	CONDENSER	3
12	HOT GAS BY-PASS VALVE	1
11	REFRIG. PRESS. GAUGE	1
10	OIL SEPARATOR	1
9	ACCUMULATOR	1
8	REFRIG. COMPRESSOR	1
7	HEAT EXCHANGER	1
6	DRAIN SENSOR	1
5	SOLENOID VALVE	1
4	MANUAL DRAIN OUTLET	1
3	DRAIN OUTLET	1
2	AIR OUTLET	1
1	AIR INLET	1
No.	PARTS	Q'TY

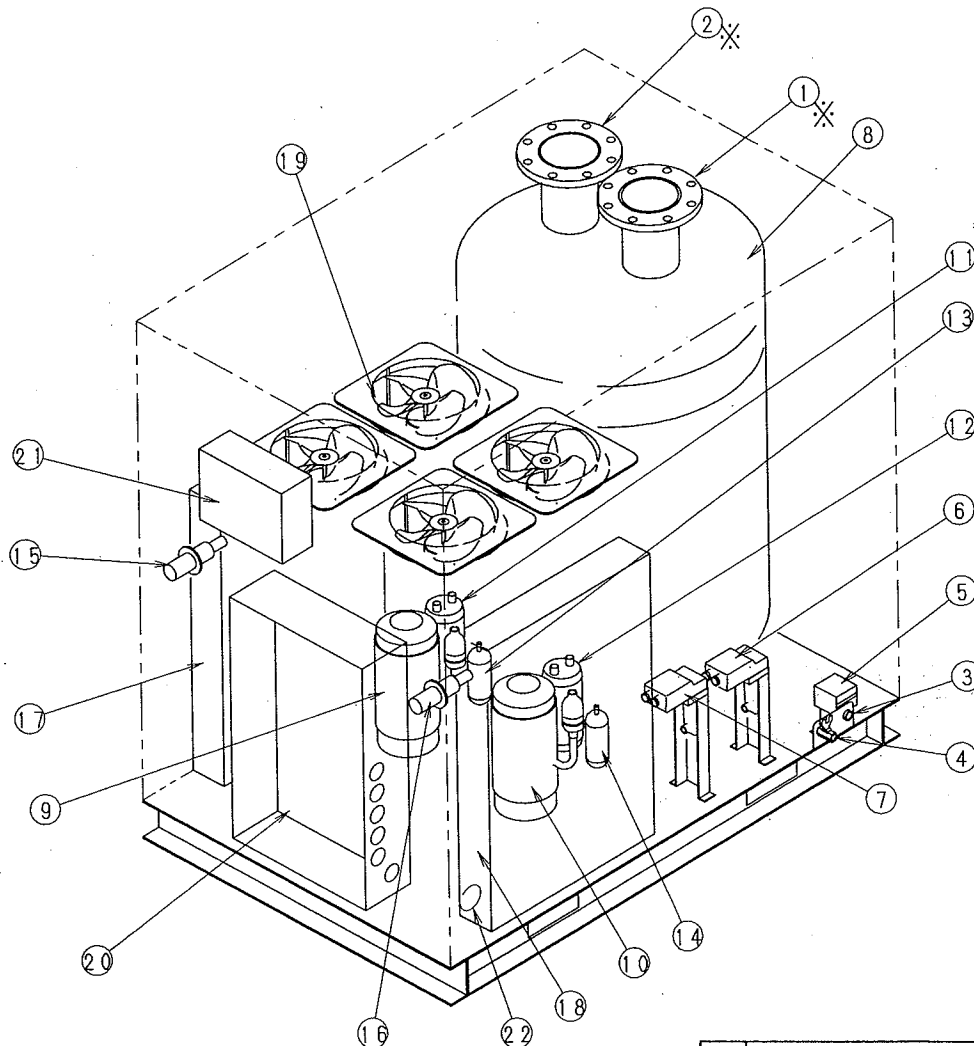
✕ Air inlet and outlet

GT5075 : Rc2 (UNION)

GT7150,7200 : 3B 10K Flange

GT7250 : 4B 10K Flange

4.1.3 GT7300,7400,7480

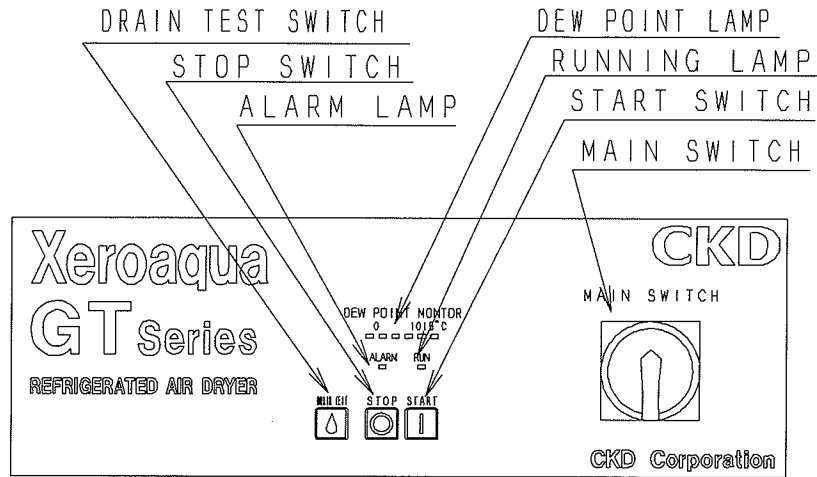


※ Air inlet and outlet
 GT7300 : 4B 10K Flange
 GT7400,7480 : 6B 10K Flange

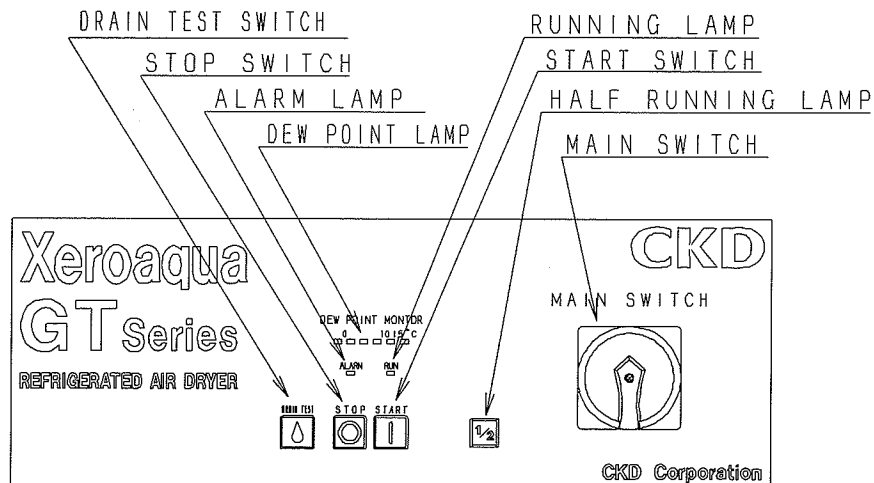
22	POWER HOLE	1	
21	FAN CONTROLLER BOX	1	
20	ELECTRIC BOX	1	
19	FAN MOTOR	4	
18	CONDENSER	1	SYSTEM2
17	CONDENSER	1	SYSTEM1
16	HOT GAS BY-PASS VALVE	1	SYSTEM2
15	HOT GAS BY-PASS VALVE	3	SYSTEM1
14	OIL SEPARATOR	1	SYSTEM2
13	OIL SEPARATOR	3	SYSTEM1
12	ACCUMULATOR	1	SYSTEM2
11	ACCUMULATOR	1	SYSTEM1
10	REFRIG. COMPRESSOR	1	SYSTEM2
9	REFRIG. COMPRESSOR	1	SYSTEM1
8	HEAT EXCHANGER	1	
7	OVER DRAIN SENSOR	1	
6	DRAIN SENSOR	1	
5	SOLENOID VALVE	1	
4	MANUAL DRAIN OUTLET	1	Rc1/2
3	DRAIN OUTLET	1	Rc1/2
2	AIR OUTLET	1	
1	AIR INLET	1	
No.	PARTS	Q'TY	REMARK

4.2 Operation panel

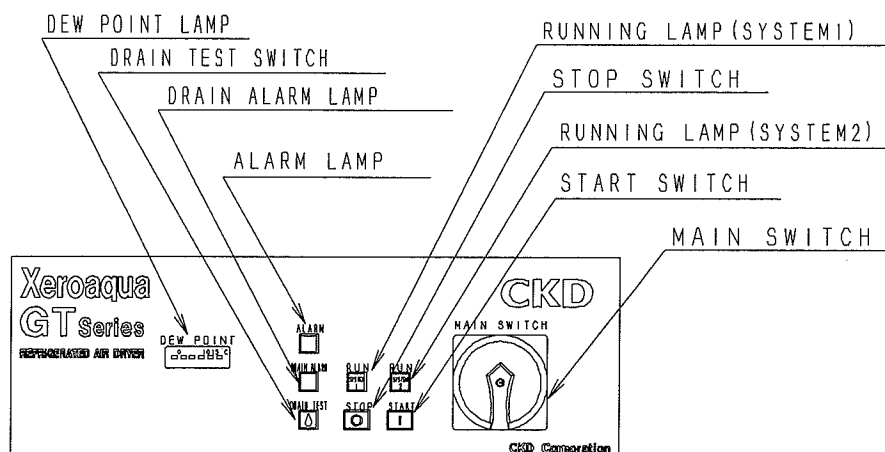
4.2.1 GT5055,7055,7075,7095,7120



4.2.2 GT5075,7150,7200,7250

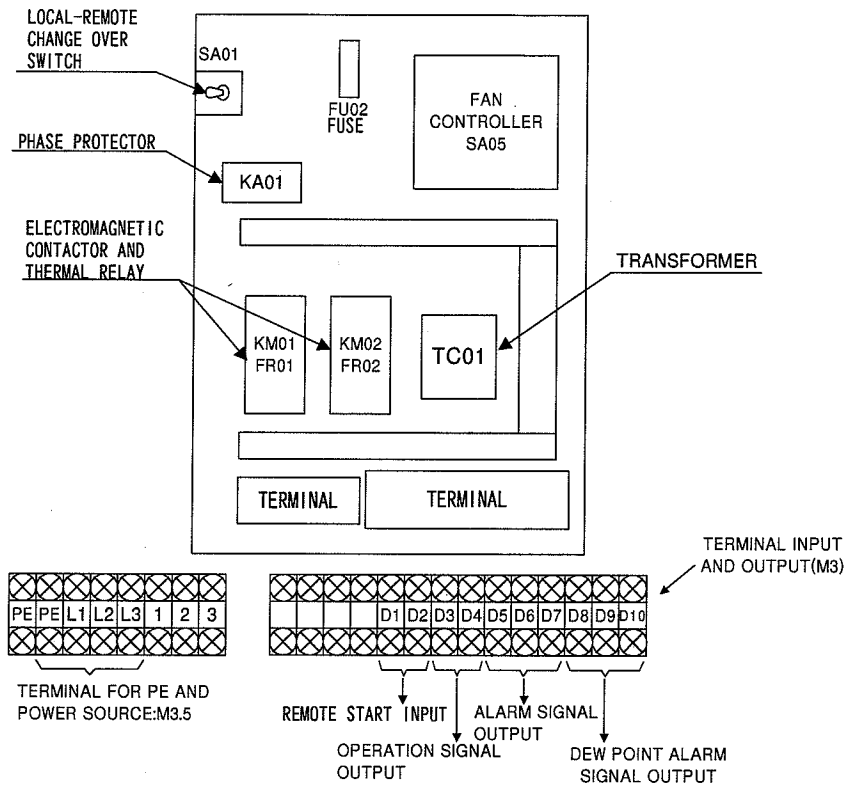


4.2.3 GT7300,7400,7480

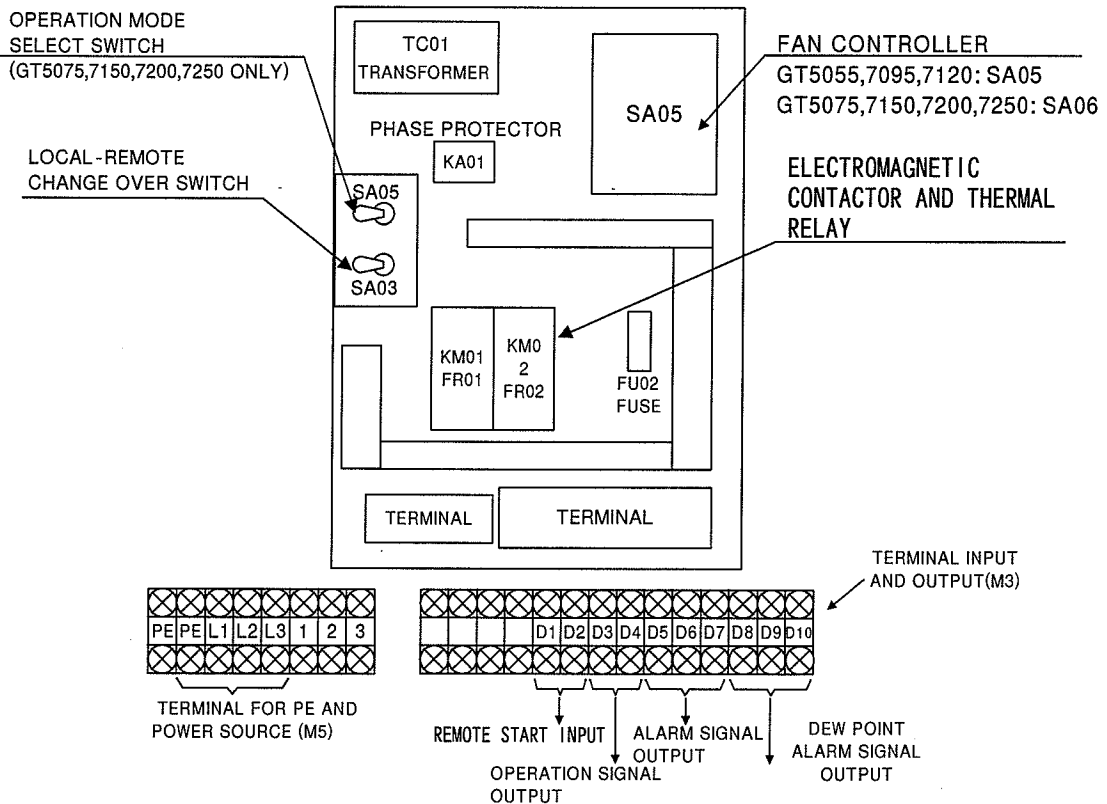


4.3 Electric box

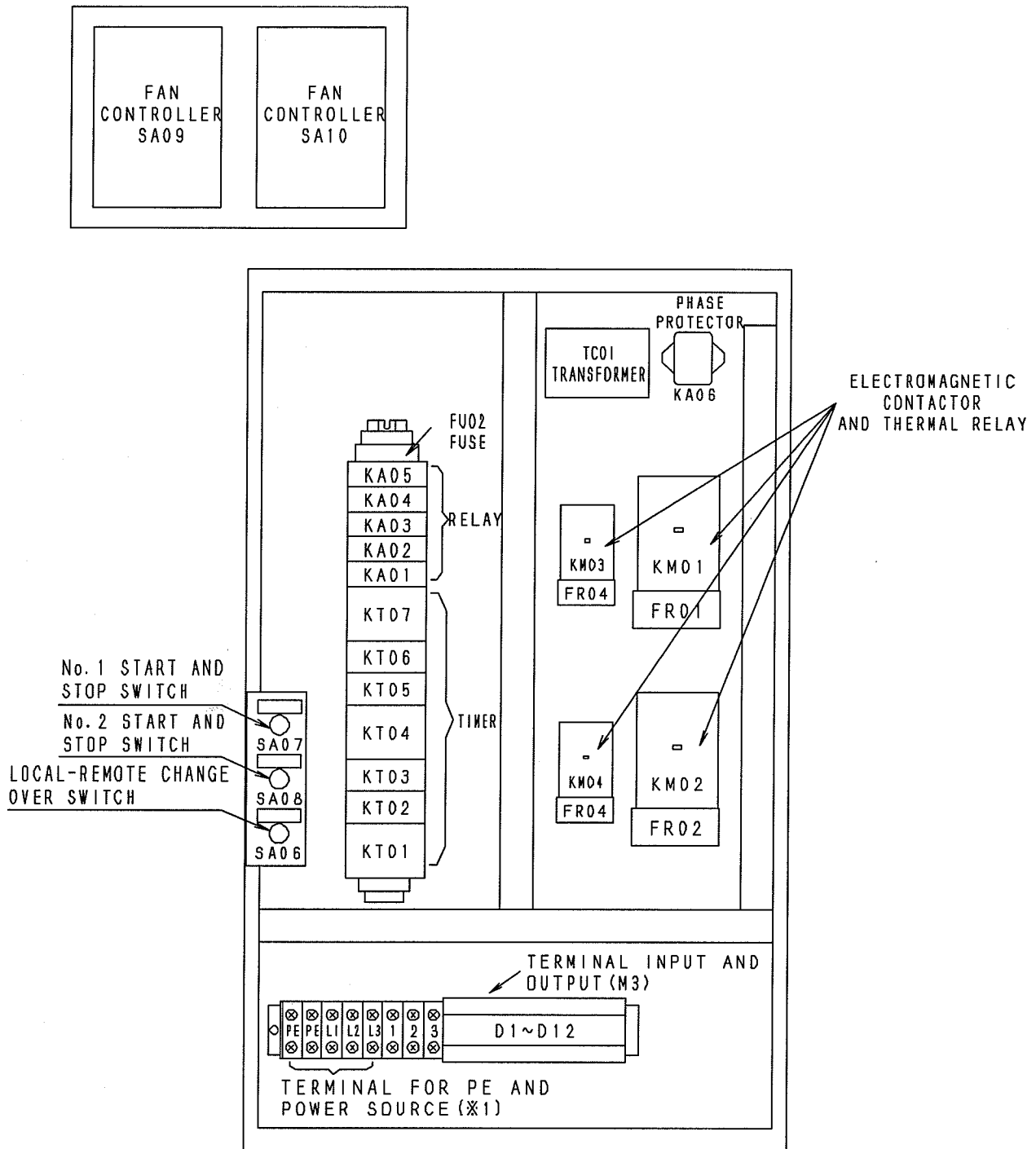
4.3.1 GT7055,7075



4.3.2 GT5055,5075,7095,7120,7150,7200,7250



4.3.3 GT7300,7400,7480



※1
GT7300 : M5
GT7400, 7480 : M6

※2
D1-D2 : REMOTE START TERMINAL
D3-D4 : REMOTE STOP TERMINAL
D5-D6 : RUNNING SIGNAL
D7-D8 : ALARM SIGNAL
D9-D10 : DEW POINT ALARM SIGNAL
D11-D12 : DRAIN OVER FLOW SIGNAL

5. Description

1) Air circuit

There is a precooler, an evaporator and a reheater in this heat exchanger. After warm and moisturized compressed air is cooled in the precooler, it goes into the evaporator.

In the evaporator, the compressed air is cooled to the dew point temperature by heat exchanging with cold fleon gas.

Cooled and dehumidified compressed air goes into the reheater, then it so warmed and dried by the reheater and is changed to warm and dry air.

2) Refrigerant circuit

High-temperature and high-pressure fleon gas produced by the compressor are cooled and condensed in the condenser to make high pressure refrigerant liquid. This refrigerant liquid is decompressed in a capillary tube or expansion valve to be low-temperature and low pressure liquid.

This refrigerant liquid exchange heat with warm and wet compressed air in the evaporator. Then, that liquid cooles compressed air by vapourization heat of refrigerant evaporating, refrigerant gas returns to the refrigerant compressor again.

3) Drain circuit

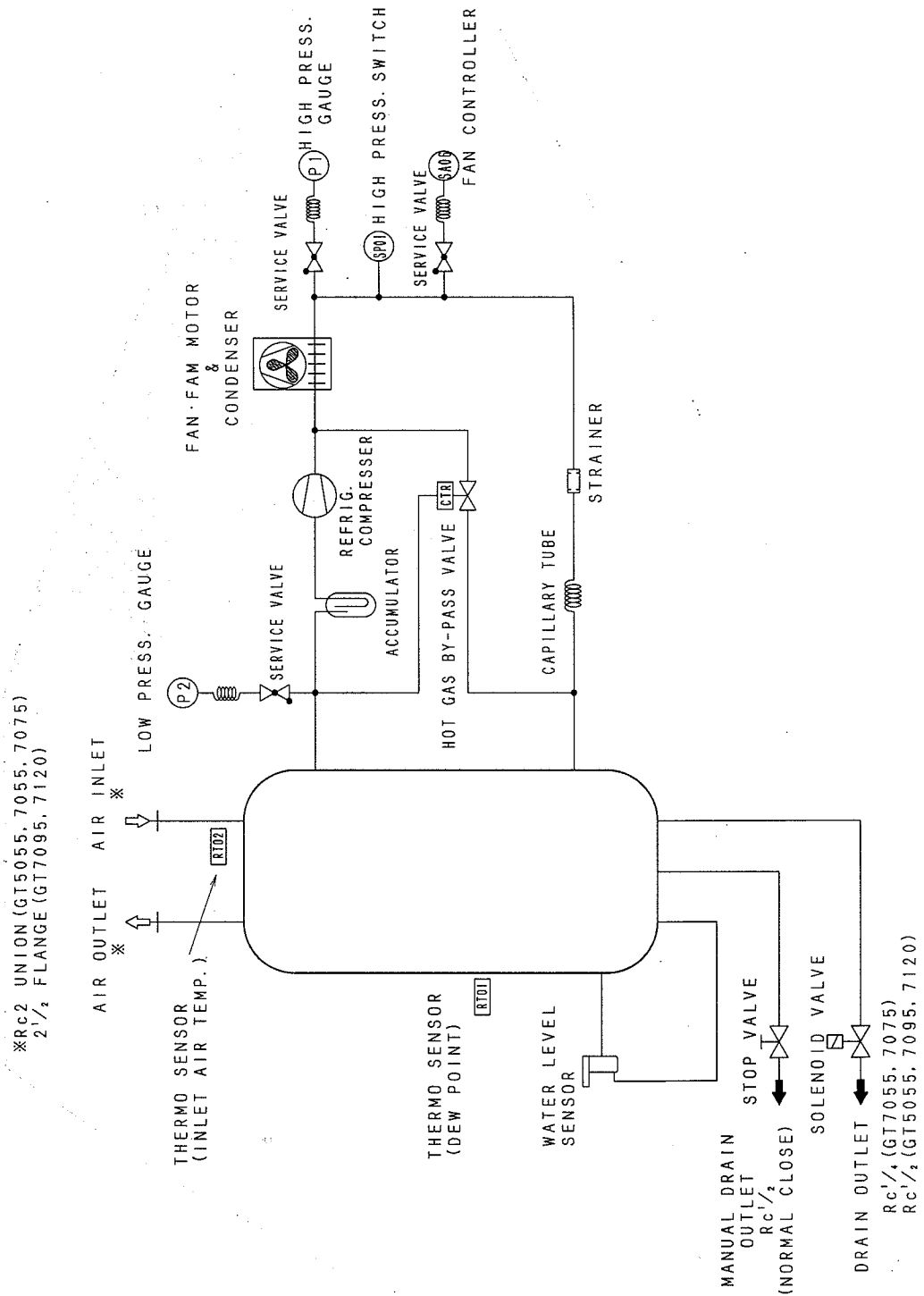
Drain becomes water vapor in compressed air that is cooled in the evaporator. Drain is accumulated at the lower portion of the heat exchanger.

Drain accumulated in the heat exchanger is regularly discharged compulsorily by air pressure when the solenoid valve is on.

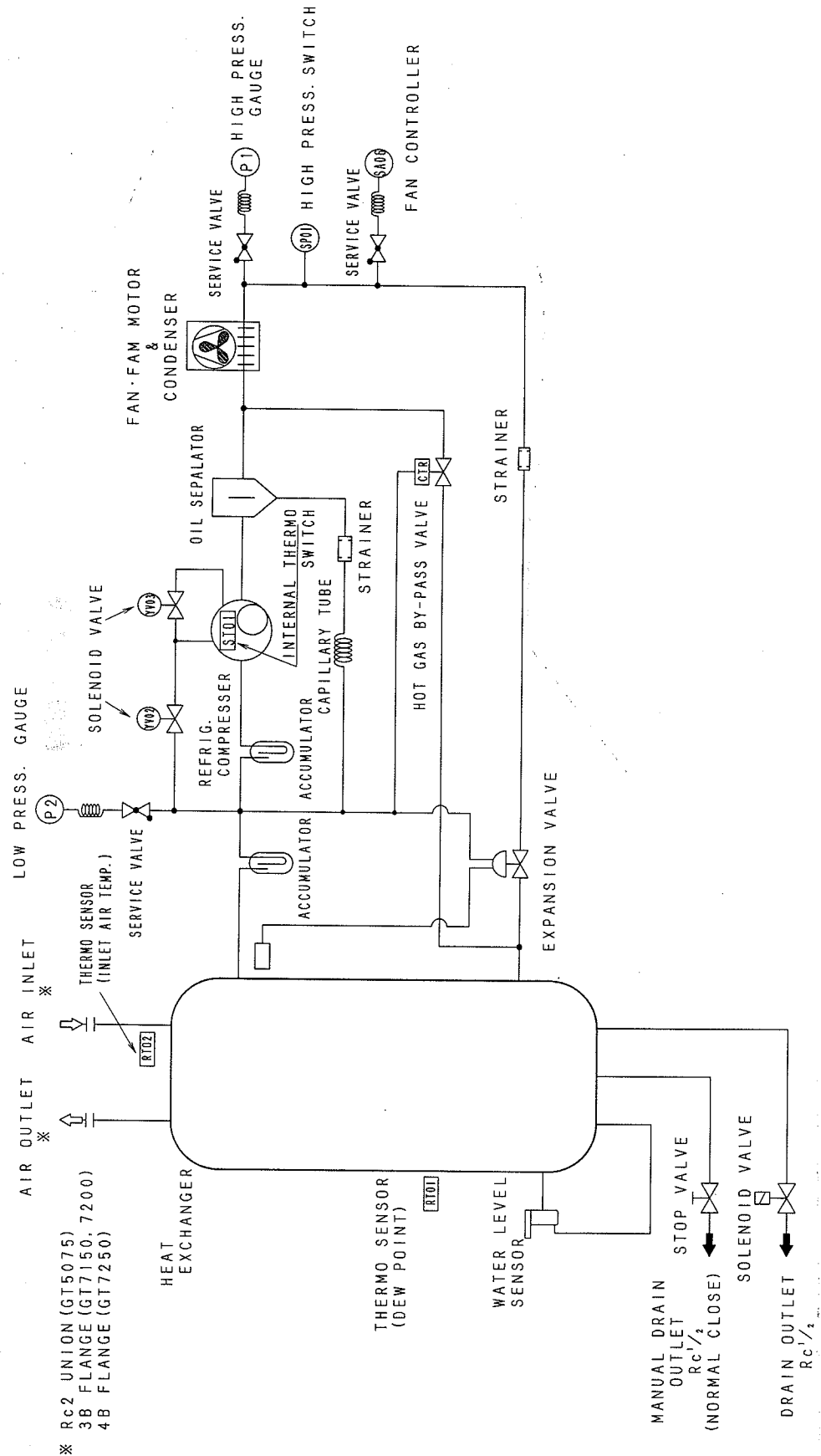
Also, this dryer has manual drain valve attached.

5.1 System diagram

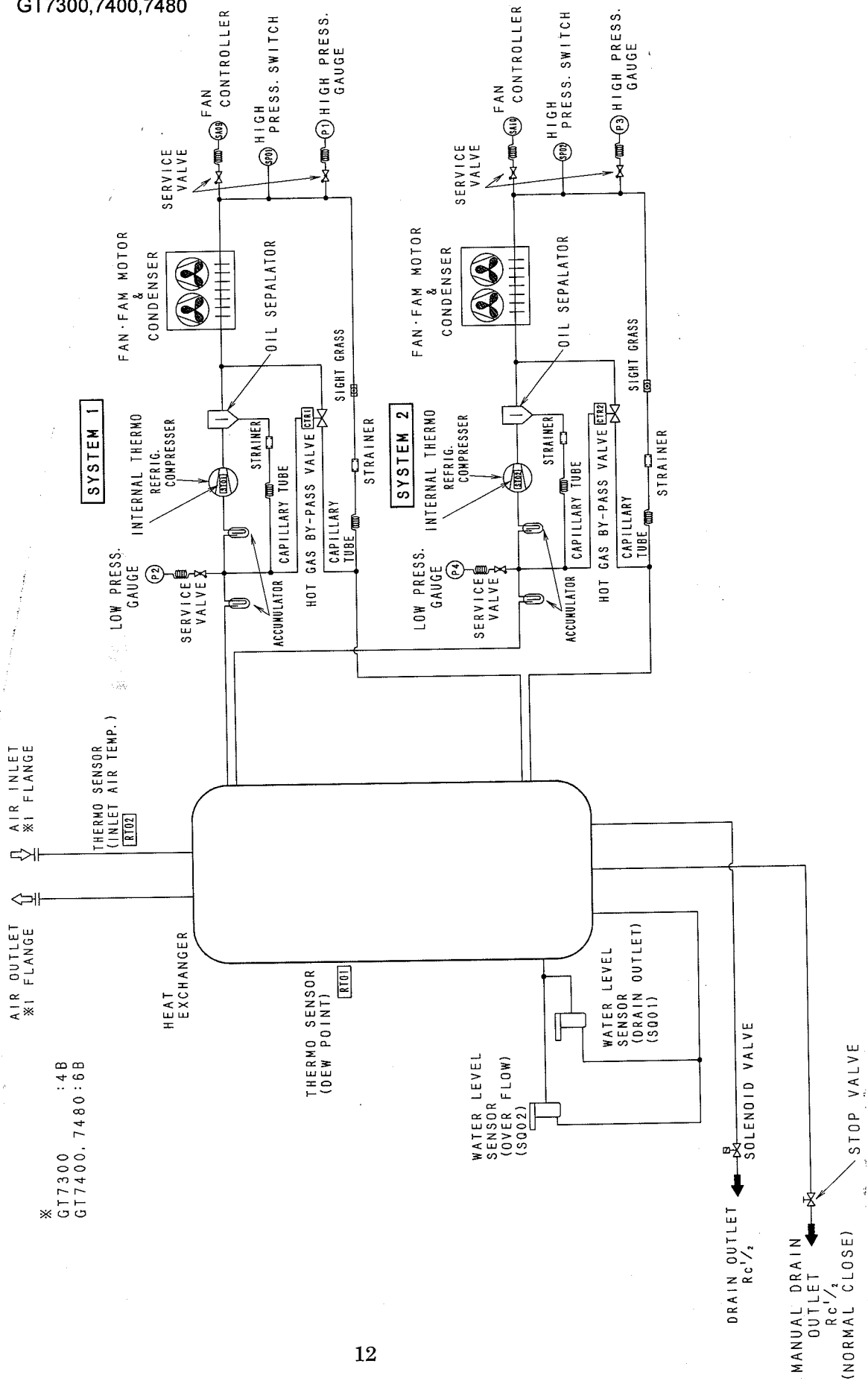
5.1.1 GT5055,7055,7075,7095,7120



5.1.2 GT5075,7150,7200,7250



5.1.3 GT7300,7400,7480



6. Startup and operation

6.1 Startup

- 1) Confirm air piping, drain piping and electrical wiring those are properly connected.
- 2) Confirm gate valves across the dryer are opened and the gate valve of by-pass piping those are closed.
Confirm supply air pressure in the pipes that is zero.
- 3) Confirm the stop valve for manual drain outlet that is closed.
- 4) Turn on the main switch and turn on the power supply. (GT5055,7055,7075,7095,7120)
Turn on the main switch and turn on the power supply 4 hours before operation. (GT5075,7150,7200,7250,7300,7400,7480)
“DEW POINT” lamp on the operation panel turns on.
At this moment, the lamp indicates ambient temperature.
- 5) To operate the dryer remotely using external signals, change the Local/Remote selector switch to remote.
- 6) GT5075,7150,7200,7250
If the dryer is operated for less than 50% load. Further, the dryer is wanted to operate by the energy saving mode, operation mode switch (SA05) set at “HALF”
GT7300,7400,7480
If the dryer is operated for less than 50% load. Further, the dryer is wanted to operate by the energy saving mode, turn off #1 or #2 refrigerant circuit “OPERATE / STOP” switch what are numbered “SA07” or “SA08”.

6.2 Operation

- 1) Start up the dryer
Push “START” button on the operation panel.
In the remote control mode, close between terminal number D1 and D2. (GT5055,5075,7055,7075,7095,7120,7150,7200,7250: Non-voltage contact, Hold input GT7300,7400,7480:Non-voltage contact, Pulse input, Min. 0.5sec.)
- 2) Starting of operation
“RUN” lamp turns on, and the dryer operates.
System1 and system2 compressors operate one by one with 5 seconds time lag.(GT7300,7400,7480) Please open supply air valve 5 minutes after dryer had been started.
* If the compressed air is flown into the dryer at the same time of the operation is started, moisturized air enters the outlet piping of the dryer, causing drain to occur.
- 3) During operation
After a while, dew point mater is working that should be within the green area.
The drain removed by the dryer is regularly discharged compulsorily by air pressure when solenoid valve is on.
You can check discharge of drain by pushing the “TEST” switch on the operation panel.
When starting the dryer, discharge drain.
Reactivate the dryer immediately after power recovery, if instantaneous power failure is less than 0.5 seconds. Also, reactivate the dryer 3 minutes later after power recovery, if instantaneous power failure is less than 2 seconds.

6.3 Shutdown the dryer

- 1) Push “STOP” button on the operation panel.
If you are using remote control mode, close the circuit between terminal D3 and D4.
(GT5055,5075,7055,7075,7095,7120,7150,7200,7250: Non-voltage contact, Hold input GT7300,7400,7480: Non-voltage contact, Input pulse more than 0.5 second.)
- 2) “RUN” lamp will be turned off, then the dryer stops operation.
Keep it running 5 minutes or more before turning it off and hold restarting it on 5 minutes or Longer. Do not operate while 3 minutes after stop this dryer, because the restart prevention circuit is operated.

6.4 Safety device activation

6.4.1 Safety devices

6.4.1.1 GT5055,7055,7075,7095,7120

- 1) Thermo switch ; When the refrigeration compressor become hot, thermo switch ST01 will be working, then the dryer stops operation.
- 2) Over current relay; When the refrigeration compressor has over current, over current relay FR01 will be working, then the dryer stops operation.
- 3) Over current relay; When the fan motor has over current, over current relay FR02 will be working, then the dryer stops operation.
- 4) High pressure switch; When the refrigerant high pressure exceeds the specified level, the high pressure switch SP01 will be working, then the dryer stops operation.
- 5) Dew point alarm; When the dryer has an abnormal dew point, DEW POINT mater shows a yellow lamp with output signal. (D8-D10) However, the dryer operation is still continuing. When the pressure dew point become correct, the alarm condition is automatically reset.
- 6) Other safety devices; This machine has some fuse for control circuit.
- 7) Alarm indication; When those safety devices (except for fuses) are working and the dryer stop operation, the alarm lamp "HL08" and switch the warning signal "D5-D7".

8) Set points of safety devices.

Mark	Model	Parts name	Application	Set point	How to reset
ST01	GT5055	Thermo switch	External temp for refriger. comp.	115°C OFF 85°C ON	Auto reset
	GT7055		External temp for refriger. comp.	135°C OFF 113°C ON	
	GT7075		Coil temp. for refriger. comp.	115°C OFF 85°C ON	
	GT7095		External temp for refriger. comp.	115°C OFF 85°C ON	
	GT7120		External temp for refriger. comp.	115°C OFF 85°C ON	
FR01	GT5055	Over current relay	Operating current for refriger. compressor	14A OFF	Manual reset
	GT7055			9A OFF	
	GT7075			12A OFF	
	GT7095			14A OFF	
	GT7120			14A OFF	
FR02	GT5055	Over current relay	Operating current for fan motor	1.1A OFF	Manual reset
	GT7055			0.58A OFF	
	GT7075			1.1A OFF	
	GT7095			0.72A OFF	
	GT7120			1.1A OFF	
SP01	GT5055	High pressure switch	Refriger. circuit	2.75MPa OFF 2.26MPa ON	Auto reset
	GT7055				
	GT7075				
	GT7095				
	GT7120				
SA01	GT5055	Dew point alarm output	Cooling air temp.	23.5°C or over and -0.9°C or less	Auto reset
	GT7055				
	GT7075				
	GT7095				
	GT7120				
FU01	GT5055	Thermo fuse		128°C	Repair the parts (TC01)
	GT7055				
	GT7075				
	GT7095				
	GT7120				
FU02	GT5055	Fuse		1A	Repair the parts (FU02)
	GT7055				
	GT7075				
	GT7095				
	GT7120				
FU03	GT5055	Fuse		0.5A	Repair the parts (FU03)
	GT7055				
	GT7075				
	GT7095				
	GT7120				
FU04	GT5055	Thermo fuse		131°C	Repair the parts (TC02)
	GT7055				
	GT7075				
	GT7095				
	GT7120				

6.4.1.2 GT5075,7150,7200,7250

- 1) Internal thermostat ; When the refrigeration compressor become hot, thermo switch ST01 will be working, then the dryer stops operation.
- 2) Over current relay; When the refrigeration compressor has over current, over current relay FR01 will be working, then the dryer stops operation.
- 3) Over current relay; When the fan motor has over current, over current relay FR02 will be working, then the dryer stops operation.
- 4) High pressure switch; When the refrigerant high pressure exceeds the specified level, the high pressure switch SP01 will be working, then the dryer stops operation.
- 5) Dew point alarm; When the dryer has an abnormal dew point, DEW POINT mater shows a yellow lamp with output signal. (D8-D10) However, the dryer operation is still continuing. When the pressure dew point become correct, the alarm condition is automatically reset.
- 6) Other safety devices; This machine has some fuse for control circuit.
- 7) Alarm indication; When those safety devices (except for fuses) are working and the dryer stops operation, the alarm lamp "HL08" and switch the warning signal "D5-D7".
- 8) Set points of safety devices.

Mark	Model	Parts name	Application	Set point	How to reset
ST01	GT5075	Thermo switch	Coil temp. for refrig. comp.	120°C OFF 98°C ON	Auto reset
	GT7150				
	GT7200				
	GT7250				
FR01	GT5075	Over current relay	Operating current for refrig. compressor	22A OFF	Manual reset
	GT7150			27.5A OFF	
	GT7200			34A OFF	
	GT7250				
FR02	GT5075	Over current relay	Operating current for fan motor	2.4A OFF	Manual reset
	GT7150			2.6A OFF	
	GT7200			3.5A OFF	
	GT7250				
SP01	GT5075	High pressure switch	Refrig. circuit	2.75MPa OFF 2.26MPa ON	Auto reset
	GT7150				
	GT7200				
	GT7250				
SA01	GT5075	Dew point alarm output	Cooling air temp.	23.5°C or over and -0.9°C or less	Auto reset
	GT7150				
	GT7200				
	GT7250				
FU01	GT5075	Thermo fuse		128°C	Repair the parts (TC01)
	GT7150				
	GT7200				
	GT7250				
FU02	GT5075	Fuse		1A	Repair the parts (FU02)
	GT7150				
	GT7200				
	GT7250				
FU03	GT5075	Fuse		0.5A	Repair the parts (FU03)
	GT7150				
	GT7200				
	GT7250				
FU04	GT5075	Thermo fuse		131°C	Repair the parts (TC02)
	GT7150				
	GT7200				
	GT7250				

6.4.1.3 GT7300,7400,7480

- 1) Internal thermostat ; When the refrigeration compressor become hot, thermo switch (ST01,02) will be working, then the dryer stops operation.
- 2) Over current relay; When the refrigeration compressor has over current, over current relay FR01,02 will be working, then the dryer stops operation.
- 3) Over current relay; When the fan motor has over current, over current relay FR03,04 will be working, then the dryer stops operation.
- 4) High pressure switch; When the refrigerant high pressure exceeds the specified level, the high pressure switch SP01,02 will be working, then the dryer stops operation.
- 5) Dew point alarm; When the dryer has an abnormal dew point, DEW POINT mater shows a yellow lamp with output signal. (D9-D10) However, the dryer operation is still continuing. When the pressure dew point become correct, the alarm condition is automatically reset.
- 6) If drain level is exceeded over set point, light the drain alarm lamp"HL09"and switch the warning signal "D11-D12".However the dryer do not stop on those conditions.
- 7) Other safety devices; This machine has some fuse for control circuit.
- 8) Alarm indication; When those safety devices (except for fuses) are working and the dryer stops operation, the alarm lamp "HL10" and switch the warning signal "D7-D8".
- 9) Set points of safety devices.

Mark	Model	Parts name	Application	Set point	How to reset
ST01 ST02	GT7300 GT7400 GT7480	Internal thermo stat	Internal coil temp. for refig compressor	120°C OFF 98°C ON	Auto reset
FR01 FR02	GT7300 GT7400 GT7480	Over current relay	Operating current for refig. compressor	22A OFF 27.5A OFF 34A OFF	Manual reset
FR03 FR04	GT7300 GT7400 GT7480	Over current relay	Operating current for fan motor	1.2A OFF 1.5A OFF 2.2A OFF	Manual reset
SP01 SP02	GT7300 GT7400 GT7480	High pressure switch	Refrig. circuit	2.26MPa ON 2.75MPa OFF	Auto reset
FU01	GT7300 GT7400 GT7480	Thermo fuse		131°C	Repair the parts (TC01)
FU02	GT7300 GT7400 GT7480	Fuse		2A	Repair the parts (FU02)
FU03	GT7300 GT7400 GT7480	Fuse		0.5A	Repair the parts (FU03)
FU04	GT7300 GT7400 GT7480	Thermo fuse		131°C	Repair the parts (TC02)
FU05	GT7300 GT7400 GT7480	Fuse		0.5A	Repair the parts (FU05)
FU06	GT7300 GT7400 GT7480	Thermo fuse		131°C	Repair the parts (TC03)
SA01	GT7300 GT7400 GT7480	Dew point alarm output	Cooling air temp.	23.5°C or over and -0.9°C or less	Auto reset

6.4.2 Rest for the alarm

- 1) Turn off the power supply and main switch for "ALARM" lamp turning off.
- 2) Remove causes that stopped the dryer abnormally.
(Refer to "Trouble shooting" on pg.19-20.)
- 3) Turn on the power supply.



CAUTION :

- Be sure to turn off the power supply when remove causes of problems.
- If thermal type safety devices had been working, the dryer can not restart until 10 to 15 minutes after power on, because of cooling time. You may restart after then.

7. Trouble shooting

Condition		Causes	Measures	
"DEW POINT" lamp does not turn on		Power supply did not turn on.	Turn on the power supply.	
		Main switch did not turn on.	Turn on the main switch.	
	Fuse was failed	FU01	Replace the transformer(TC01).	
		FU02	Replace the fuse.	
		FU03	Replace the fuse.	
		FU04	Replace the transformer(TC02).	
		Different power supply phase pattern.	Adjust the phase	
	Main control board (SA01) was failed.	Replace the main control board.		
"RUN" lamp does not turn on when the push "START" button.		GT5055,5075,7055,7075,7095,7120,7150,7200,7250		
		Local-Remote change over switch (SA05) was set at "REMOTE".	Set "LOCAL" on the Local-Remote change over switch.	
		Main control board(SA01) was failed.	Replace the main control board.	
		Start switch(SB01) was failed.	Replace the main control board.	
		GT7300,7400,7480		
		Local-Remote change over switch (SA06) was set at "REMOTE".	Set "LOCAL" on the Local-Remote change over switch.	
		Start switch (SA07,08) was set at "OFF".	Set "ON" on the start switch.	
		Run lamp (HL07,08) bulb was failed.	Replace the run lamp bulb.	
		Start switch (SB01) was failed.	Replace the start switch.	
	Dew point is abnormal	Yellow lamp (High temp. side of "DEW POINT" lamp) is turned on.	Refer to "*" mark in water comes out when the dryer is running.	
		Dew point sensor(RT01) was short-circuited.	Replace the dew point sensor.	
Yellow lamp (Low temp. side of "DEW POINT" lamp) is turned on.		Ambient temp. was low.	Adjust the temp.(2°C or higher)	
		Inlet air temp. was low.	Adjust the temp.(5°C or higher)	
		Dew point sensor(RT01) was burned out.	Replace the dew point sensor.	
Water comes out when the dryer is running	Dew point is normal, but water comes out to the end of piping	The pipe temp. coming out from the dryer was lower than the dew point.	Insulate the pipe from ambient temp.	
		By-pass circuit is open.	Close the by-pass circuit.	
		Too much flow rate.	Reduce the flow (Less than rated condition.)	
		Low inlet air pressure.	Increase the air pressure.	
		Solenoid valve(YV01) for drain discharge was failed.	Open the manual drain valve	Replace the solenoid valve.
		Drain piping is clogged.		Take apart and clean the drain pipe.
		Too much drain capacity.		Watch drain do not flow in the dryer.
		Drain sensor (SQ01) is broke down.		Replace the drain sensor.
	"DEW POINT" lamp is on, and water comes out to the end of piping.(*)	Over spec the load.	· Reduce the ambient temp. · Reduce the inlet air temp. · Increase the air press. · Reduce the flow.	
		· High ambient temp.		
		· High inlet air temp.		
		· Low inlet air press.		
		· Too much flow rate.	Adjust the voltage.	
		Low or high power supply voltage.		
		Dust filter was contaminated.	Clean the dust filter.	
		GT5075,7150,7200,7250		
		Operation mode select switch (SA05) was set at "HALF".	Set "FULL" on the operation mode select switch.	
GT7300,7400,7480				
Start switch (SA07,08) was set at "OFF".	Set "ON" on the start switch.			

Condition		Causes		Measures		
The dryer suddenly stops.	"ALARM" lamp turns on.	Some safety devices were turning on. · Refrigerant gas leakage. · Over spec the load.		Remove causes of problems and reset · Repair the parts leaking gas and refill refrigerant. · Refer the P15 * mark.		
	All the lamps turn off, and the dryer stops.	Power supply was turned off.		Turn on the power supply.		
		Low or high power supply voltage.		Adjust the voltage.		
		Fuse was failed	FU01	Replace the transformer.(TC01)		
			FU02	Replace the fuse.		
	FU03		Replace the fuse.			
		FU04	Replace the tranceformer (TC02).			
"RUN" lamp is turns on when the dryer stops.	Momentary power failure.		Wait until the dryer is restarted by automatically. (Reactivate the dryer immediately after power recovery, if instantaneous power failure is less than 0.5 seconds. Also, reactivate the dryer 3 minutes later after power recovery, if instantaneous power failure is less than 2 seconds.)			
"RUN" lamp is turns off, and the dryer stops.	Power failure is occurred more than two seconds.		Please restart after three minutes or more. (Do not operate while 5 minutes after stop this dryre, because the restart prevention circuit is operated.)			
Pressure drop before/after the dryer is too large.		Stopper valves before/after the dryer is closed.		Fully open the valves.		
		Treated flow rate is too large.		Lower the flow rate.		
		Congelation in the dryer.		· Increase ambient temp. · Increase the inlet air temp.		
Drain on pressurized air is exhausted continuously from the drain solenoid valve.		Solenoid valve(YV01) for drain discharge was failed.		Take apart for clean or replace the solenoid valve.		
		Inlet air temp. sensor (RT02) was burned out.		Replace the inlet air temp. sensor.		
"DRAIN ALARM" lamp(HL09) is turns on, and "DRAIN OVER-FLOW" signal is output.		GT7300,7400,7480				
		Drain discharge circuit was failed or drain pipe is choked up.		Open the manual drain valve	Take apart for clean or replace the solenoid valve.	
		Inlet air temp. sensor (RT02) was short-circuited.			Exchange the inlet air temp. senser.	

CKD株式会社

北海道

●札幌営業所

〒060-0032 札幌市中央区北2条東 14-26(苗穂駅前ビル1階)
TEL(011)232-1760 FAX(011)232-9050

東北

●北上営業所

〒024-0034 岩手県北上市諏訪町 2-4-26
TEL(0197)63-4147 FAX(0197)63-4186

●仙台営業所

〒984-0015 仙台市若林区卸町 2-2-1(パックス 2・1 階)
TEL(022)239-1851 FAX(022)239-1856

●山形営業所

〒990-0834 山形県山形市清住町 2-6-24
TEL(023)644-6391 FAX(023)644-7273

●郡山営業所

〒963-8034 福島県郡山市島 1-16-9
TEL(0249)23-6348 FAX(0249)24-0862

北関東

●大宮営業所

〒330-0812 さいたま市北区宮原町 3-429-1(第一清水ビル 2 階)
TEL(048)652-3811 FAX(048)652-3816

●茨城営業所

〒300-0847 茨城県土浦市卸町 1-1-1(関鉄つくばビル 4 階 C)
TEL(029)841-7490 FAX(029)841-7495

●宇都宮営業所

〒321-0953 栃木県宇都宮市東宿郷 3-1-7(NBF 宇都宮ビル 3 階)
TEL(028)638-5770 FAX(028)638-5790

●太田営業所

〒373-0813 群馬県太田市内ヶ島町 946-2(大機総合ビル 1 階)
TEL(0276)45-8935 FAX(0276)46-5628

南関東

●東京営業所

〒105-0013 東京都港区浜松 1-31-1(文化放送メディアプラス 4 階)
TEL(03)5402-3628 FAX(03)5402-0122

●立川営業所

〒190-0022 東京都立川市錦町 3-2-30(朝日生命立川ビル 3 階)
TEL(042)527-3773 FAX(042)527-3782

●千葉営業所

〒260-0021 千葉市中央区新宿 2-5-19(千葉南ビル 3 階)
TEL(043)248-2815 FAX(043)248-2818

●横浜営業所

〒222-0033 横浜港北地区新横浜 2-17-19(日総第 15 ビル 4 階)
TEL(045)475-3471 FAX(045)475-3470

●厚木営業所

〒243-0035 神奈川県厚木市愛甲 1212-3
TEL(046)226-5201 FAX(046)226-5208

●甲府営業所

〒409-3867 山梨県中巨摩郡昭和町清水新居 1509
TEL(055)224-5256 FAX(055)224-3540

●東京支店

〒105-0013 東京都港区浜松 1-31-1(文化放送メディアプラス 4 階)
TEL(03)5402-3620 FAX(03)5402-0120

北陸・信越

●長岡営業所

〒940-0088 新潟県長岡市柏町 1-4-33(高野不動産ビル 2 階)
TEL(0258)33-5446 FAX(0258)33-5381

●上田営業所

〒386-0034 長野県上田市大字中之条 323-6(NF ビル 103 号)
TEL(0268)24-2392 FAX(0268)24-2394

●松本営業所

〒399-0033 長野県松本市大字笹賀 5945
TEL(0263)25-0711 FAX(0263)25-1334

●富山営業所

〒939-8064 富山県富山市赤田中町 494-1
TEL(076)421-7828 FAX(076)421-8402

●金沢営業所

〒920-0025 石川県金沢市駅西本町 3-16-8
TEL(076)262-8491 FAX(076)262-8493

東海

●名古屋営業所

〒485-8551 愛知県小牧市応時 2-250
TEL(0568)74-1371 FAX(0568)77-3291

●豊田営業所

〒473-0912 愛知県豊田市広田町広田 103
TEL(0565)54-4771 FAX(0565)54-4755

●静岡営業所

〒422-8035 静岡県静岡市駿河区宮竹 1-3-5
TEL(054)237-4424 FAX(054)237-1945

●浜松営業所

〒453-0016 静岡県浜松市和田町 438
TEL(053)463-3021 FAX(053)463-4910

●四日市営業所

〒510-0064 三重県四日市市新正 5-3-20
TEL(0593)51-3151 FAX(0593)51-6788

●名古屋支店

〒485-8551 愛知県小牧市応時 2-250
TEL(0568)74-1356 FAX(0568)77-3317

関西

●大阪営業所

〒542-0073 大阪府中央区日本橋 1-17-17(銀泉 日本一ビル)
TEL(06)6635-2773 FAX(06)6643-5950

●大阪東営業所

〒577-0083 大阪府守口市京阪本通 1-2-3
(損保ジャパン守口ビル 6 階)
TEL(06)4250-6333 FAX(06)6991-7477

●堺営業所

〒591-8021 大阪府堺市新金岡町 5-5-6(泉マンション 1 階)
TEL(072)253-0071 FAX(072)253-0054

●滋賀営業所

〒524-0033 滋賀県守山市浮気町字中ノ町 300-21(第 2 小島ビル 4 階)
TEL(077)514-2650 FAX(077)583-4198

●京都営業所

〒612-8414 京都市伏見区竹田段川原町 35-3
TEL(075)645-1130 FAX(075)645-4747

●奈良営業所

〒639-1123 奈良県大和郡山崎町 480-15(アコム・ローナ 1 階)
TEL(0743)57-6831 FAX(0743)57-6821

●神戸営業所

〒673-0016 兵庫県明石市松の内 2-6-8(西明石スポーツビル 3 階)
TEL(078)923-2121 FAX(078)923-0212

●大阪支店

〒542-0073 大阪府中央区日本橋 1-17-17(銀泉 日本一ビル)
TEL(06)6635-2765 FAX(06)6643-5015

中国

●広島営業所

〒730-0022 広島市中区銀山町 3-1(ひろしまハイビル 21 12 階)
TEL(082)545-5125 FAX(082)244-2010

●岡山営業所

〒700-0916 岡山県岡山市西之町 10-104
TEL(086)244-3433 FAX(086)241-8872

●山口営業所

〒747-0034 山口県防府市天神 2-2-2
TEL(0835)38-3556 FAX(0835)22-6371

四国

●高松営業所

〒760-0055 香川県高松市観光通 2-2-15(ダイヤビル)
TEL(087)834-9640 FAX(087)834-9633

●松山営業所

〒790-0053 愛媛県松山市竹原 2-1-33(サンライト竹原 1 階)
TEL(089)931-6135 FAX(089)931-6139

九州

●北九州営業所

〒802-0976 北九州市小倉南区南方 5-13-34
TEL(093)964-0785 FAX(093)964-0910

●福岡営業所

〒812-0013 福岡市博多区博多駅東 1-10-27(アステア博多ビル 5 階)
TEL(092)473-7136 FAX(092)473-5540

●大分営業所

〒871-0015 大分県中津市牛神町 1-11-1
TEL(0979)26-0725 FAX(0979)23-6866

●熊本営業所

〒869-1103 熊本県菊池郡菊陽町久保田 2799-13
TEL(096)340-2580 FAX(096)340-2584

本社

●本社・工場

〒485-8551 愛知県小牧市応時 2-250
TEL(0568)77-1111 FAX(0568)77-1123

●営業本部

〒485-8551 愛知県小牧市応時 2-250
TEL(0568)74-1303 FAX(0568)77-3410

●海外営業部

〒485-8551 愛知県小牧市応時 2-250
TEL(0568)74-1338 FAX(0568)77-3461

CKD Corporation

□ 2-250 Uji Komaki, Aichi 485-8551, Japan
□ PHONE +81-(0)568-74-1336 FAX +81-(0)568-77-3412

U.S.A

CKD USA CORPORATION

●HEADQUARTERS

4080 Winnetka Avenue, Rolling Meadows, IL 60008 USA
PHONE +1-847-368-0539 FAX +1-847-788-0575

●CINCINNATI OFFICE

●SAN ANTONIO OFFICE

●SAN JOSE OFFICE

Europe

CKD EUROPE BRANCH

De Fruitvelden 28 Hoofddorp 2132NZ The Netherlands
PHONE +31-(0)23-5541490 FAX +31-(0)23-5541491

Malaysia

M-CKD PRECISION SDN.BHD.

●HEADQUARTERS

Lot No.6, Jalan Modal 23/2, Seksyen 23, Kawasan, MIEL,
Fasa B, 40300 Shah Alam, Selangor Darul Ehsan, Malaysia

PHONE +60-(0)3-5541-1468 FAX +60-(0)3-5541-1533

●JOHOR BAHRU OFFICE

●MELAKA OFFICE

●PENANG OFFICE

Thailand

CKD THAI CORPORATION LTD.

●SALES HEADQUARTERS-BANGKOK OFFICE

Suwan Tower, 14/1 Soi Saladaeng 1, North Sathorn Rd., Bangkok,
Bangkok 10500 Thailand

PHONE +66-(0)2-267-6300 FAX +66-(0)2-267-6305

●LAEMCHABANG OFFICE

●NAVANAKORN OFFICE

●RAYONG OFFICE

●LAMPHUN OFFICE

●KORAT OFFICE

●AMATANAKORN OFFICE

Singapore

CKD SINGAPORE PTE LTD.

705 Sims Drive #03-01/02, Shun Li Industrial Complex,
387384 Singapore

PHONE +65-6744-2623 FAX +65-6744-2486

Taiwan

日商喜開理設 有限公司台湾分公司

CKD CORPORATION TAIWAN BRANCH

中華民國台灣省台北市中山北路二段 96 號嘉新大樓第 14 樓 1405 室
Rm.1405, 14F, No.96, Sec.2, Chung Shan N.Rd., Taipei, Taiwan, R.O.C

PHONE +886-(0)2-2523-0374 FAX +886-(0)2-2523-5081

China

喜開理(上海)機器有限公司

CKD(SHANGHAI)CORPORATION

●営業部/上海事務所

(SALES HEADQUARTERS / SHANGHAI OFFICE)

中国上海市黄浦区九江路 333 号金融廣場 19 樓 1903 室

Room 1903, 333 Jiujiang Road, Shanghai, 200001, China

PHONE +86-(0)21-63602277 FAX +86-(0)21-63511661

●無錫事務所(WUXI OFFICE)

●南京事務所(NANJING OFFICE)

●杭州事務所(HANGZHOU OFFICE)

●武漢事務所(WUHAN OFFICE)

●青島事務所(QINGDAO OFFICE)

●蘇州事務所(SUZHOU OFFICE)

●北京事務所(BEIJING OFFICE)

●天津事務所(TIANJING OFFICE)

●長春事務所(CHANG CHUN OFFICE)

●大連事務所(DALIAN OFFICE)

●瀋陽事務所(Shenyang OFFICE)

●西安事務所(XIAN OFFICE)

●重慶事務所(CHONGQING OFFICE)

●成都事務所(CHENGDU OFFICE)

●廣州事務所(Guangzhou OFFICE)

●深圳事務所(Shenzhen OFFICE)

Korea

CKD KOREA CORPORATION

Room No.1105, 11th FL, The Korea Teachers Pension B/L 27-2,
Yoido-Dong, Youngdeungpo-Gu, Seoul, 150-742, Korea

PHONE +82-(0)2-783-5201~5203 FAX +82-(0)2-783-5204