

Pneumatic Cylinders II
Catalog No. CB-030SA

Hollow chuck Double acting/single acting

CKF Series

● Operating Stroke: 5, 7, 8, 16mm

Double acting



Single acting(Normally Open)



Single acting(Normally Closed)



Specifications

Item		CKF				
Size		15CS	20CS	25CS	30CS	40CS
Bore size	mm	ø30	ø40		ø50	ø80
Actuation		Double acting/single acting				
Working fluid		Compressed air				
Max. working pressure	MPa	0.7				
Min. working pressure	MPa	0.3				
Ambient temperature	°C	5 to 60				
Port size		M5				
Operating Stroke	mm	5		7	8	16
Rod diameter	mm	ø16	ø24		ø28	ø34
Volumetric capacity (reciprocating)	cm ³	2.5	5.2	7.3	13.3	73.2
Hollow diameter	mm	ø5.5	ø8.4	ø10.4	ø12	ø16
Repeatability	mm	±0.03				
Weight	kg	0.29	0.43	0.63	1.2	2.3
Lubrication		Not available				

How to order

Without switch (built-in magnet for switch)

CKF - 15CS - O — P4 P40

With switch (built-in magnet for switch)

CKF - 15CS - O - SW11 - R - P4 P40

A Size

B Option
*1, *2

C Switch model No.

D Switch quantity

Compatibility table by variation

Applicable bore size		Double acting	Single acting Normally Open	Single acting Normally Closed
			O	C
ø30 to 80	P4	▲	▲	▲
	P40	▲	▲	▲

●: Applicable models ○: Semi-applicable models
▲: Contact CKD for details. □: Not applicable

Precautions for model No. selection

*1: Y11 and Y21 are available for CKF-15CS, Y11, Y12, Y21 and Y22 are available for CKF-20 to 30CS, and Y11 and Y21 are available for CKF-40CS.

*2: For option Y11, Y12, Y21 and Y22 attachments, three are included on delivery.

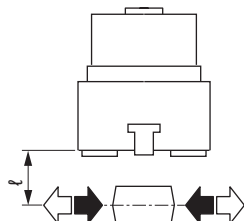
*3: Made-to-order product. Contact CKD Sales for details.

Code	Description
A Size	
15CS	
20CS	
25CS	
30CS	
40CS	
B Option	
Blank	Standard (double acting)
O	Single acting (Normally Open)
C	Single acting (Normally Closed)
Y11	With attachment (S50C) External chuck (attachment No.: 510 to 540, 710)
Y12	With attachment (S50C) Internal chuck (attachment No.: 610 to 630)
Y21	With attachment (MC nylon) For external diameter chuck(Attachment No.: 510 to 540, 710)
Y22	With attachment (MC nylon) Internal chuck (attachment No.: 610 to 630)
C Switch model No.	
Refer to the compatibility table on Intro Pages 23 to 26 for switch model No.	
D Switch quantity	
R	1 on open side
H	1 on closed side
D	2

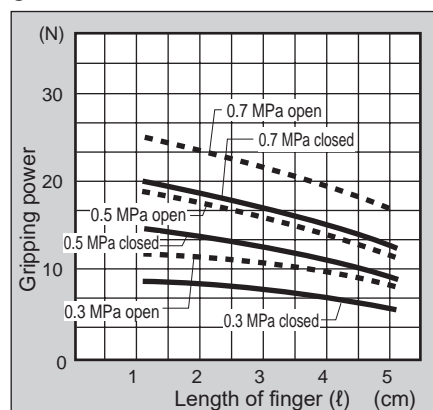
Gripping power performance data

- Gripping power is the thrust (one finger) in the direction of the arrow shown in the figure.
- The gripping force in the opening/closing directions with a finger length ℓ of the hand with a supply pressure of 0.3, 0.5, and 0.7 MPa is shown.

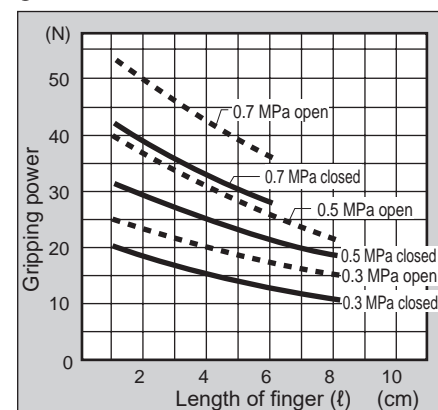
- Open direction (↔) - - - (Broken line)
- Closed direction (→) — (shown with continuous line)



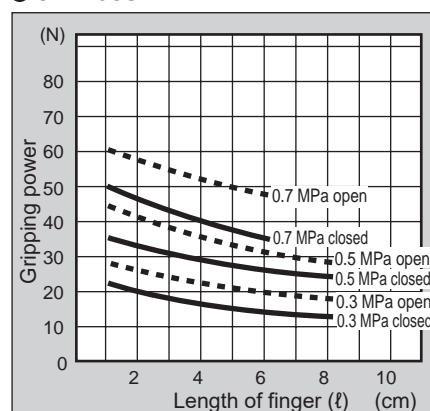
● CKF-15CS



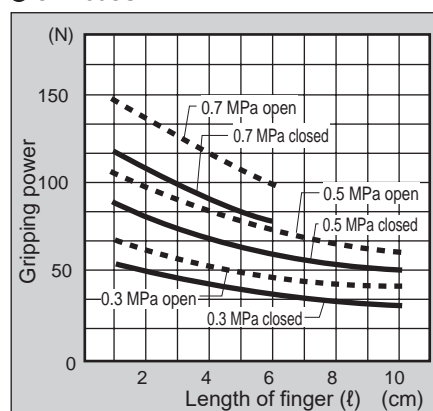
● CKF-20CS



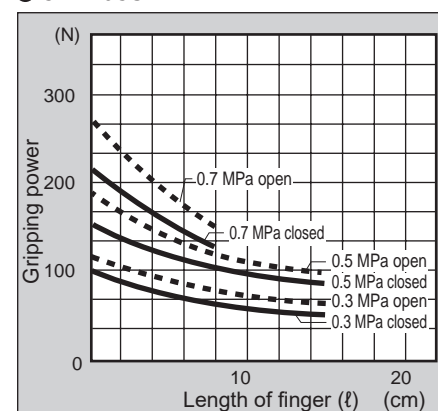
● CKF-25CS



● CKF-30CS



● CKF-40CS



(Note) O type gripping force decreases approximately 20 to 30% in the closed direction compared to double acting. C type gripping force decreases approximately 10 to 20% in the open direction compared to the double acting type.

P4
Series

Pneumatic actuator
Hand/Chuck
Related products
Cylinder
Switch

Vacuum components
Pneumatic valves

Pneumatic auxiliary components
Clean air components
Speed controller
Fitting
Auxiliary valve
Silencer
Tube

Gas generator

Fluid control components

Electric actuator
Motor specification
Motorless specifications