

Cylinder Switch for Magnetic Fields SW-TOY



Improvement of Reliability in Magnetic Fields

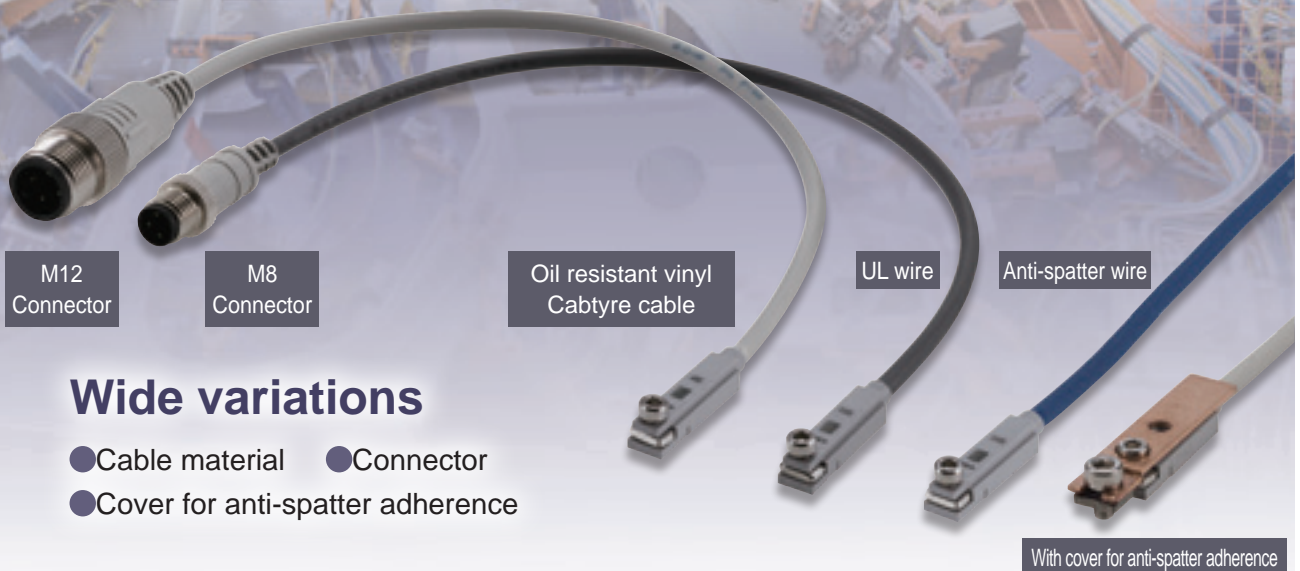
Reed sensor



Long service life circuit

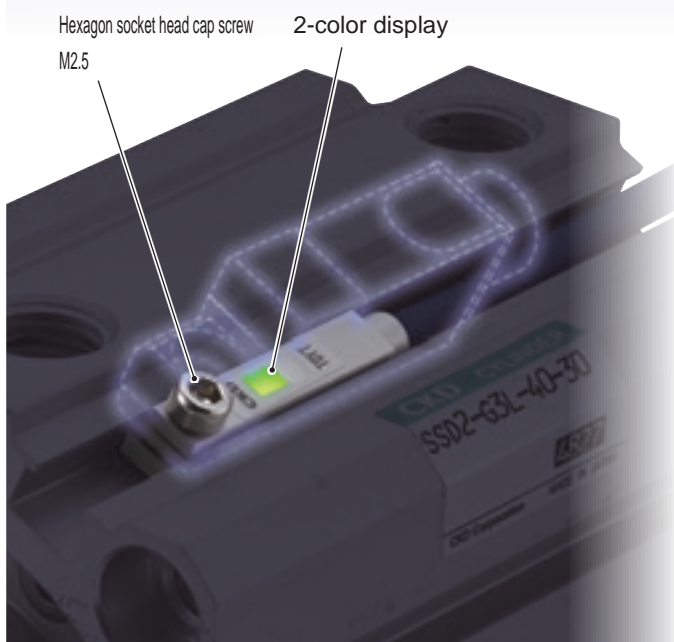
**Ideal for
DC welding
processes!!**

Prevents malfunction due to magnetization of the mounting jig, and reduces line stop risk.



Wide variations

- Cable material
- Connector
- Cover for anti-spatter adherence



Space saving

The exterior is reduced by using a compact sensor.

volume ratio
**70%
Less**

Energy saving

Standby power is reduced by using a reed sensor.

Standby power
**50%
Less**

Compatibility with conventional products

Magnet change not required. Available only with switch replacement.

Compatibility
Magnet change
Not required

Degree of protection

Dust/waterproof standard
"IP67" compatible.

Dust/waterproofing
**IP67
Compatible**

CKD Corporation

CC-1552A

Switch compatible model list

Compatibility		Bore size
Small bore size cylinder	CMK2	ø32, ø40
Round shaped cylinder	SCM	ø32 to ø100
Tie rod cylinder	SCG	ø40 to ø100
Medium bore size cylinder	SCA2	ø40 to ø100
Medium bore size cylinder	SCS2	ø125 to ø250
Compact cylinder	SSD2	ø32 to ø200
Guided super compact cylinder	SSG	ø32 to ø100
Compact cylinder	SSD	ø32 to ø160
Stopper cylinder	STK	ø32 to ø50
Guided cylinder	STG	ø32 to ø80
Guided cylinder	STS/L	ø32 to ø100
Tie rod cylinder with brake	JSG	ø40 to ø100
Brake cylinder (medium bore size)	JSC3	ø40 to ø100
Brake cylinder (large bore size)	JSC4	ø125 to ø180
Position locking compact cylinder	USSD	ø40 to ø63
High energy absorption cylinder	HCM	ø32 to ø63
Clamp cylinder	CAC4	ø40 to ø80
Position locking clamp cylinder	UCAC2	ø50, ø63
Lightweight clamp cylinder	CAC-N	ø32, ø40
Lightweight clamp cylinder	UCAC-N32	ø32, ø40
Rotary clamp cylinder	RCS2	ø32 to ø63
Rotary clamp cylinder	RCC2	ø32 to ø63
Pin clamp cylinder	PCC	(ø50)

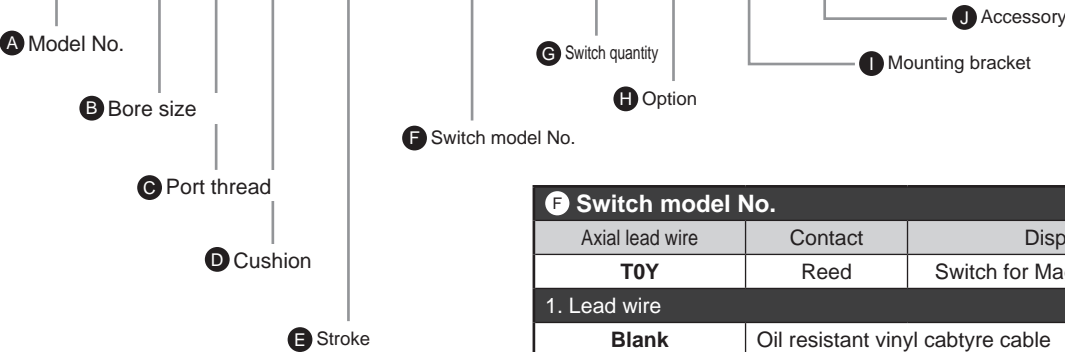
Example of model No.(Compact cylinder SSD2 Series)

Without switch (without magnet for switch)

SSD2 - 32 - - - 5 - - - N - LB - I

With switch (built-in magnet for switch)

SSD2-L - 32 - - - 10 - T0YLFK - R - N - LB - I



F Switch model No.			
Axial lead wire	Contact	Display	Lead wire
T0Y	Reed	Switch for Magnetic Fields	2-wire
1. Lead wire			
Blank	Oil resistant vinyl cabtyre cable		
L	UL electric wire		
T	Spatter-resistant wire		
2. Lead wire length, connector specifications			
Blank	Lead wire 1 m		
3	Lead wire 3 m		
5	Lead wire 5 m		
B	M12 connector (4PIN specification), 3-4PIN not polarized, lead wire 0.3m		
M	M12 connector (4PIN specification), 1-4PIN not polarized, lead wire 0.3m		
F *1	M8 connector (3PIN specification), 1-4PIN not polarized, lead wire 0.3m		
3. Switch option			
Blank	No option		
K	With cover for anti-spatter adherence		

⚠ Precautions for model No. selection

*1:Only lead wire "L" can be selected for connector specification "F".

Specifications/How to order

Specifications

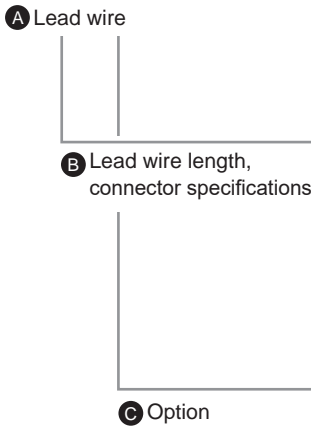
Item	Reed 2-wire		
	T0Y	T0YL	T0YT
Applications	Dedicated for programmable controller		
Switch polarity	No polarity		
Load voltage	24 VDC ±10%		
Load current	5 to 20 mA (*1)		
Internal voltage drop	4.5 V or less		
Leakage current	0.5 mA or less		
Display lamp	Red/Green LED (Lit when ON)		
Lead wire length	1 m (oil resistant vinyl cabtyre cable 2-conductor 0.2mm ²)	1 m (flame-resistant cabtyre cable 2-conductor 0.2mm ² UL acquired line	1 m (flame-resistant vinyl cabtyre cable 2-conductor 0.2mm ²)
Insulation resistance	20 MΩ and over with 500 VDC megger		
Withstand voltage	No failure after 1 minute of 1000 VAC application.		
Shock resistance	294m/s ²		
Ambient temperature	-10 to +60°C		
Degree of protection	IEC standards IP67 JISC0920 (water-tight)		
Contact protection circuit	None		
Weight	1m: 18g 3m: 49g 5m: 80g		
Weight of connector only	M12: Connector code B/M:10g M8: Connector code F:4g		

*1: Max. load current: 20mA at 25°C. The current is lower than 20mA if the operating ambient temperature is higher than 25°C. (5 to 10mA at 60°C)

How to order

● 2-wire cylinder switch

SW - T0Y L M K



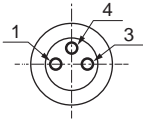
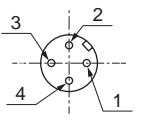
Code	Description
A Lead wire	
Blank	Oil resistant vinyl cabtyre cable
L	UL electric wire
T	Spatter-resistant wire
B Lead wire length, connector specifications	
Blank	Lead wire 1 m
3	Lead wire 3 m
5	Lead wire 5 m
B	M12 connector (4PIN specification), 3-4PIN not polarized, lead wire 0.3m
M	M12 connector (4PIN specification), 1-4PIN not polarized, lead wire 0.3m
F *1	M8 connector (3PIN specification), 1-4PIN not polarized, lead wire 0.3m
C Option	
Blank	No option
K	With cover for anti-spatter adherence

*1: Only lead wire "L" is available for connector specification "F".

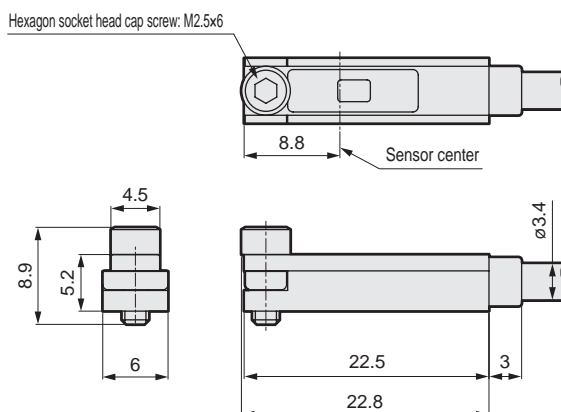
● Connector pin array

Type of connector	Connector pin array				
	Code	1PIN	2PIN	3PIN	4PIN
M12 (4PIN specifications)	B	N.C.	N.C.	±	±
	M	±	N.C.	N.C.	±
M8 (3PIN specifications)	F	±		N.C.	±

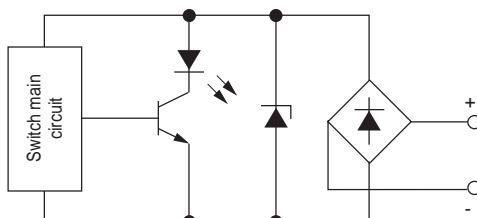
● Connector specifications

Item	M8	M12
Pin array		
Shock resistance	294m/s ²	
Degree of protection	IP67	
Insulation resistance	100 MΩ with 500 VDC megger	
Withstand voltage	1000 VAC for 1 min. (between contacts and between contact housings) leakage current 1 mA or less	

Dimensions



Switch internal circuit diagram



Safety precautions

Be sure to read this section before use.
"Pneumatic Cylinders I and II" (No. CB-029SA, CB-030SA).

⚠ CAUTION

- When using the product in a welding process where a magnetic field disturbance is generated, control the amount of signal canceling on the load side during welding. (There is no function to cancel the magnetic field during welding.)
- When attaching a stopper to the head side of the guided cylinder (25st or less), use a non-magnetic material for the mounting bolt and stopper.

The goods and/or their replicas, the technology and/or software found in this catalog are subject to complementary export regulations by Foreign Exchange and Foreign Trade Law of Japan. The law requires a license from Ministry of Economy, Trade and Industry to export them.

CKD Corporation

[Website]
<https://www.ckd.co.jp/en/>

Head Office • Plant
Tokyo Office
Osaka Office

2-250, Oujii, Komaki, Aichi 485-8551
4F, Bunkahousou Media Plus, 1-31-1, Hamamatsu-cho,
Minato-ku, Tokyo 105-0013
6F, PMO EX Shin-Osaka, 4-2-10 Miyahara,
Yodogawa-ku, Osaka 532-0003

TEL(0568)77-1111 FAX(0568)77-1123
TEL(03)5402-3620 FAX(03)5402-0120
TEL(06)6396-9630 FAX(06)6396-9631