

Smallest explosion-proof class Intrinsically safe explosion-proof solenoid valves from valve widths of 10 mm and up **4GD/E1 to 4 Series**

Explosion-proof performance Ex ib IIC T4 Gb

CCC China Conformity Certificate No. (CCC) 2020322307000310

NEPSI China explosion-proof standard NEPSI acquired GYJ19.1311X

IEC IECEx IBE 19.0008

KCC Korea Conformity Certificate No. 20-KA4B0-0766

TSC Taiwan Conformity Certificate No. TD040272



Degree of protection

IP67

Space saving/lightweight Ideal for narrow explosion-proof areas.

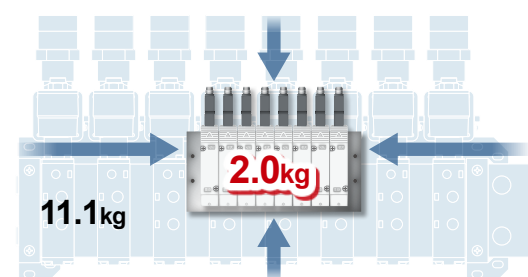
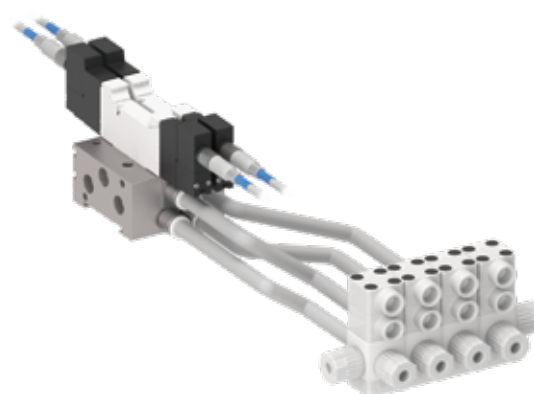
Lineup of types with two 3-port valves integrated

4GE3 and 4F3 footprint and weight comparison

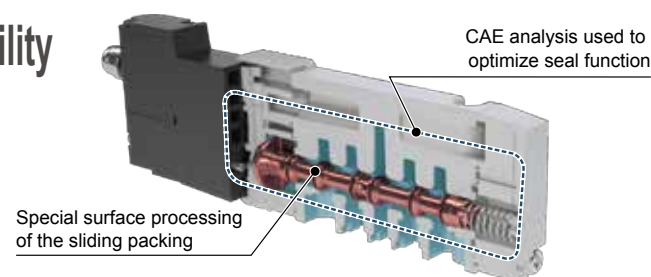
Footprint
84%
Reduced

Ultra-lightweight
82%
Reduced

*Conventional 8-station model comparison



High durability



CAE analysis used to optimize seal function

Durability count
50 million
or more

Wide-ranging series lineup

Model	Cylinder operation	Compatible cylinder bore													
		20	25	30	32	40	50	63	75	80	100	125	140	160	
4G1	Low speed	●					●								
	High speed	●			●										
4G2	Low speed	●								●					
	High speed	●					●								
4G3	Low speed	●									●				
	High speed	●						●							
4G4	Low speed	●												●	
	High speed	●													●

* The table is for reference. Varies according to piping conditions, load factor, etc.
For details of Component selection, refer to Pneumatic Valves (No. CB-023SA) system selection.

High environmental performance, reliability and ease of use

Prevents manual malfunction

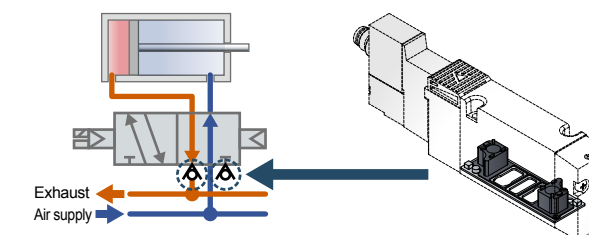
Manual override has a protective cover.



Helps prevent misoperation problems

[Exhaust check valve]

Equipped as standard with both metal base and resin block. (4G*1 to 4G*3 EX compatible)



2-direction wiring outlet

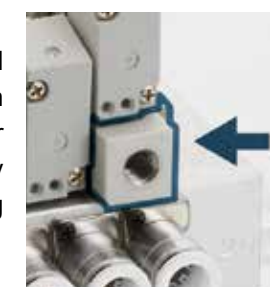
Wiring direction can be selected according to the solenoid valve installation location.



Air supply/exhaust spacer

[Air supply spacer]

Pressure can be changed and air supplied for each valve. Ideal for cylinder thrust adjustment by increasing/decreasing individual valve pressure.



[Exhaust spacer]

Individual exhaust prevents single acting cylinder malfunction.

Applications Ideal explosion-proof specifications for narrow spaces

Coating equipment



Liquid conditioning equipment



Analysis equipment



Solenoid valve space can be greatly reduced when intrinsic safety explosion-proof structures are required.