

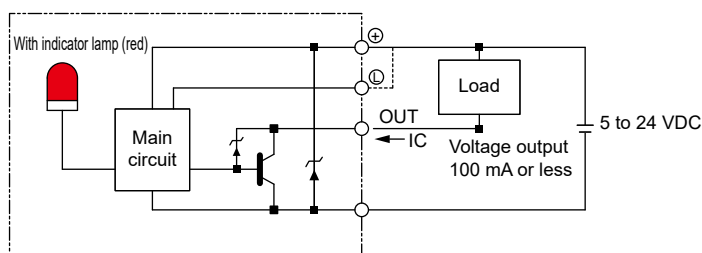
Origin sensor, limit sensor

Manufacturer	Model	Quantity
OMRON Corporation	EE-SX672	3

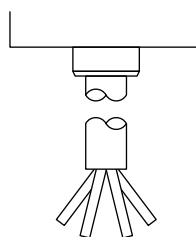
Performance

Item	Specifications
Hysteresis	0.025 mm or less
Light source (peak emission wavelength)	GaAs infrared LED (940 nm)
Indicator lamp	ON when receiving light (red)
Power supply voltage	5 to 24 VDC $\pm 10\%$ ripple (P-P) 10% or less
Current consumption	35 mA or less (NPN)
Control output	NPN: NPN open collector output 5 to 24 VDC 100 mA or less OFF state current 0.5 mA or less Residual voltage 0.8 V or less (at load current 100 mA) Residual voltage 0.4 V or less (at load current 40 mA)
Operating ambient illumination	Light-receiving surface luminance Fluorescent light: 1,000 lx or less
Ambient temperature range	When operating: -25 to +55°C When stored: -30 to +80°C (no condensation or freezing)
Ambient humidity range	When operating: 5 to 85% RH When stored: 5 to 95% RH (no condensation or freezing)
Degree of protection	IP50 IEC 60529 Standards
Cord length	2 m (Connector with cord [EE-1006 2M])

Output circuit



Wiring diagram



Terminal layout

Brown	5 to 24 VDC
Pink	L
Blue	0 V
Black	OUTPUT

Sensor dog dimensions

Motor mounting direction		Motor mounting direction			
Body size	E/D/R/L	Body size	E/D	R	L
				Grease nipple None	Grease nipple Yes
ETS-05	Fig. 1	ETS-10	Fig. 3	Fig. 3	
ETS-06	Fig. 2	ETS-12	Fig. 3	Fig. 3	Fig. 4

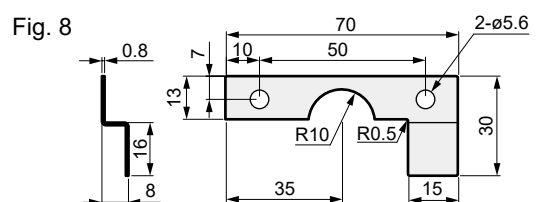
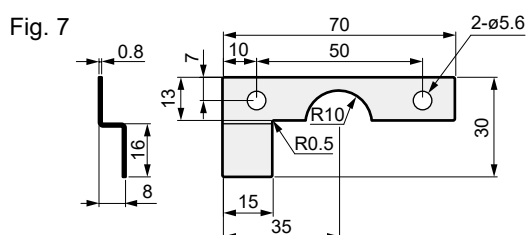
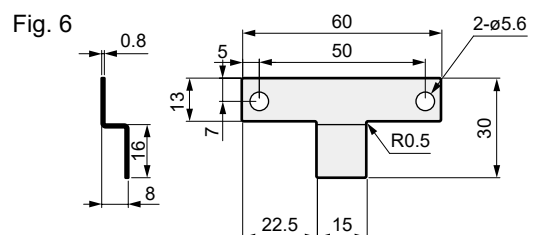
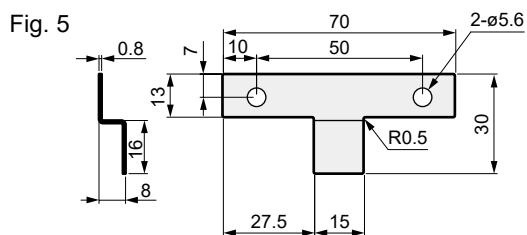
Fig. 1

Fig. 2

Fig. 3

Fig. 4

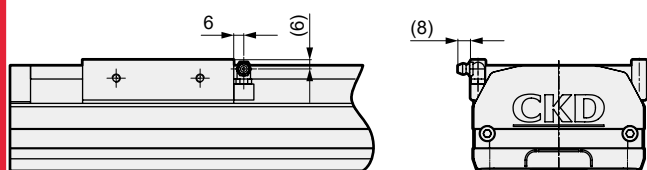
Motor mounting direction					
Body size	E/D	R		L	
		Grease nipple None	Grease nipple Yes	Grease nipple None	Grease nipple Yes
ETS-13	Fig. 5	Fig. 5	Fig. 6	Fig. 5	Fig. 6
ETS-14	Fig. 5	Fig. 5	Fig. 7	Fig. 5	Fig. 8



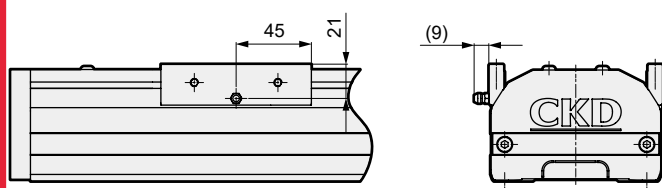
Grease nipple dimensions

*Horizontally symmetrical against the actuator.

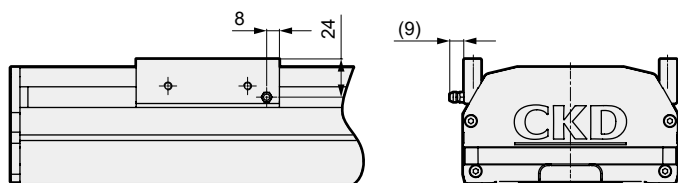
● ETS-10



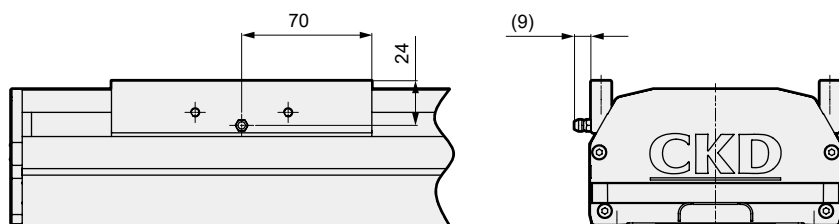
● ETS-12



● ETS-13



● ETS-14



Servo motor compatible							Stepper motor compatible				
EBS	EBR	ETS	ETS Multi-Axis	ECS	ETV	ECV	EKS	EBS	EBR	ETS	ECS

Safety
precautions

MEMO

List of attachments

Basic

Motor mounting bolt (common motor mounting direction)

Model No.	Mounted motor specification	Motor size	Size	Quantity
ETS-05	A	□42	M3	4
ETS-06	B		M3	4
ETS-10	A		M4	4
ETS-12	B	□56	M4	4
ETS-13		□60	M4	4
ETS-14	C		M4	4

By motor mounting direction

Model No.	Attachment name	Quantity
E (external direct mounting)	Coupling (Assembled at shipment)	1
R (right-side mounting)	Timing belt	1
L (left-side mounting)		
D (bottom mounting)	Pulley	1

When origin/limit sensor is selected *1

Sensor mounting direction	Shipping format	Quantity
Inner sensor	Fixed position assembled at shipment	3 *2
Outer sensor	Included at shipment *3	


*1 Shipping format varies according to whether origin sensor and limit sensor are assembled inside or outside.

*2 When "None" is selected for origin sensor or limit sensor, the other sensor is also "None".

*3 Sensor mounting screws are also included.

Maintenance parts

● Maintenance parts (external mounted sensor)

Basic price model No.	Compatibility	Part
		
ETS-22008-000001	All models	Body
ETS-22008-000006		Cable

Servo motor compatible								Stepper motor compatible			
EBS	EBR	ETS	ETS Multi-Axis	ECS	ETV	ECV	EKS	EBS	EBR	ETS	ECS