

## List of attachments

### Motor mounting bolt (common motor mounting direction)

Model No.	Mounted motor specification	Motor size	Size	Quantity
EBS-04	A	□42	M3	4
	B		M3	4
EBS-05	A	□42	M3	4
	B		M3	4
EBS-08	A	□56 □60	M4	4
	B		M4	4
	C		M4	4

### Coupling

Model No.	Part name	Quantity
LE (Motor mounting direction: Straight)	Coupling (Assembled at shipment)	1

### Timing belt, pulley (motor side)

Model No.	Shipping format	Quantity
L* (Motor mounting on side/bottom)	Included at shipment *1	1 each

\*1 The body side pulley is assembled.

### Sensor mounting plate

Model No.	Shipping format	Quantity
For both with and without sensor	Included at shipment *1	3

\*1 Screws for mounting plate are also included.  
Sensor dogs are assembled onto all products.

### Origin sensor, limit sensor

Model No.	Shipping format	Quantity
When "with" sensor is selected	Included at shipment *2	3 *3

\*2 Sensor mounting screws are also included.

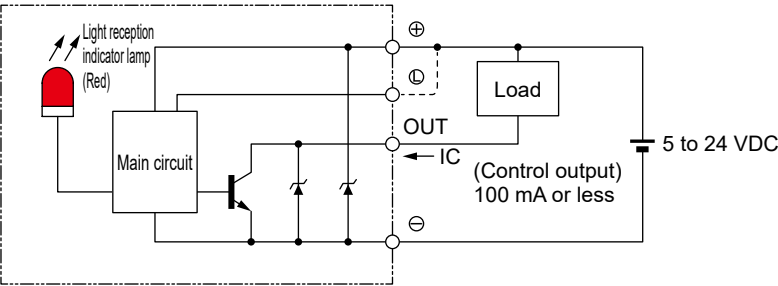
\*3 When "None" is selected for origin sensor or limit sensor, the other sensor is also "None".

Origin sensor, limit sensor

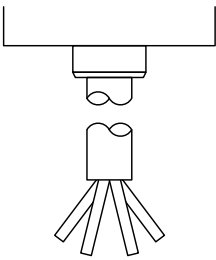
[Specifications]

Item		Specifications
Manufacturer	Manufacturer	OMRON Corporation
	Model	EE-SX674
Hysteresis		0.025 mm or less
Light source (peak emission wavelength)		GaAs infrared LED (940 nm)
Indicator lamp		ON when receiving light (red)
Power supply voltage		5 to 24 VDC $\pm 10\%$ ripple (P-P) 10% or less
Current consumption		12 mA or less (with L terminal open)
Control output	Type	NPN (NPN open collector)
	Output	5 to 24 VDC 100 mA or less
	Current when OFF	0.5 mA or less
	Residual voltage	0.8 V or less (with 100 mA load current) 0.4 V or less (with 40 mA load current)
Operating ambient illumination		Light-receiving surface luminance Fluorescent light: 1,000 lx or less
Ambient temperature range	Operating	-25 to +55°C, no condensation or freezing
	In storage	-30 to +80°C, no condensation or freezing
Ambient humidity range	Operating	5 to 85% RH, no condensation or freezing
	In storage	5 to 95% RH, no condensation or freezing
Degree of protection		IP50 IEC 60529 Standards
Cord length		2 m (Connector with cord [EE-1006 2M])

Output circuit



Wiring diagram




Terminal layout

Brown	5 to 24 VDC
Pink	L
Blue	0 V
Black	OUTPUT

## Maintenance parts

### ■ Maintenance parts (origin sensor, limit sensor)


Model No.	Compatibility	Part
		
EBS-SENSOR-N-KIT	All EBS models	Body, cable, mounting plate (1 each) *1

\*1 Mounting plate screws and sensor mounting screws are also included.

### ■ Maintenance parts (grease nozzle)

Model No.	Compatibility
	
EBS-NOZZLE	All models

### ■ Maintenance parts (steel belt)

Model No.	Compatibility
	
EBS-04-STEELBELT (stroke code 4-digit)	EBS-04 (applicable stroke product)
EBS-05-STEELBELT (stroke code 4-digit)	EBS-05 (applicable stroke product)
EBS-08-STEELBELT (stroke code 4-digit)	EBS-08 (applicable stroke product)