

List of attachments

Motor mounting bolt (common motor mounting direction)

Model No.	Mounted motor specification	Motor size	Size	Quantity
EBS-04	M	50 W	M4	4
	Y		M4	4
	P		M3	4
	F		M4	4
EBS-05	M	100 W	M4	4
	Y		M4	4
	P		M3	4
	F		M4	4
EBS-08	M	200 W	M5	4
	Y		M5	4
	P		M4	4
	F		M5	4
EBS-12	M	400 W	M5	4
	Y		M5	4
	P		M4	4

Coupling

Model No.	Part name	Quantity
LE (Motor mounting direction: Straight)	Coupling (Assembled at shipment)	1

Timing belt, pulley (motor side)

Model No.	Shipping format	Quantity
L * (Motor mounting on side/bottom)	Included at shipment *1	1 each

*1 The body side pulley is assembled.

Sensor mounting plate

Model No.	Shipping format	Quantity
For both with and without sensor	Included at shipment *1	3

*1 Screws for mounting plate are also included.
Sensor dogs are assembled onto all products.

Origin sensor, limit sensor

Model No.	Shipping format	Quantity
When "with" sensor is selected	Included at shipment *2	3 *3

*2 Sensor mounting screws are also included.

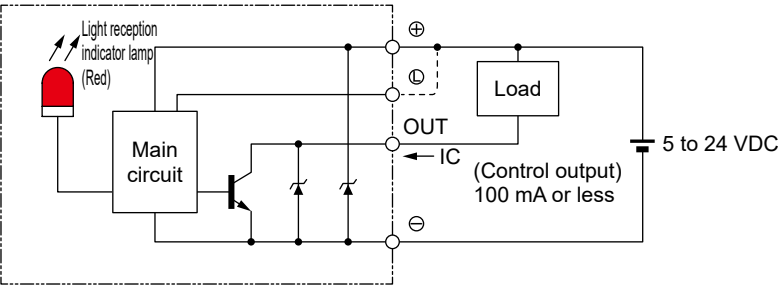
*3 When "None" is selected for origin sensor or limit sensor, the other sensor is also "None".

Origin sensor, limit sensor

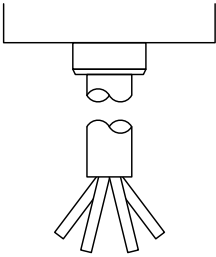
[Specifications]

Item		Specifications
Manufacturer	Manufacturer	OMRON Corporation
	Model	EE-SX674
Hysteresis		0.025 mm or less
Light source (peak emission wavelength)		GaAs infrared LED (940 nm)
Indicator lamp		ON when receiving light (red)
Power supply voltage		5 to 24 VDC \pm 10% ripple (P-P) 10% or less
Current consumption		12 mA or less (with L terminal open)
Control output	Type	NPN (NPN open collector)
	Output	5 to 24 VDC 100 mA or less
	Current when OFF	0.5 mA or less
	Residual voltage	0.8 V or less (with 100 mA load current) 0.4 V or less (with 40 mA load current)
Operating ambient illumination		Light-receiving surface luminance Fluorescent light: 1,000 lx or less
Ambient temperature range	Operating	-25 to + 55°C, no condensation or freezing
	In storage	-30 to + 80°C, no condensation or freezing
Ambient humidity range	Operating	5 to 85% RH, no condensation or freezing
	In storage	5 to 95% RH, no condensation or freezing
Degree of protection		IP50 IEC 60529 Standards
Cord length		2 m (Connector with cord [EE-1006 2M])

Output circuit



Wiring diagram




Terminal layout


Brown	5 to 24 VDC
Pink	L
Blue	0 V
Black	OUTPUT

Maintenance parts


■ Maintenance parts (coupling)

Model No.	Compatibility	Hole diameter
		
EBS-05-COUPLING	EBS-04, EBS-05	ø8
EBS-08-COUPLING-M	EBS-08 (Mounted motor specification: M/Y/F)	ø14
EBS-08-COUPLING-P	EBS-08 (Mounted motor specification: P)	ø11
EBS-12-COUPLING-M	EBS-12 (Mounted motor specification: M/Y)	ø14
EBS-12-COUPLING-P	EBS-12 (Mounted motor specification: P)	ø14

■ Maintenance parts (timing belt, pulley)


Model No.	Compatibility	Part
		
EBS-04-BELT-KIT	EBS-04LR/LD/LL	Timing belt, pulley (motor side) (1 each)
EBS-05-BELT-KIT	EBS-05LR/LD/LL	
EBS-08-BELT-KIT-M	EBS-08LR/LD/LL (Mounted motor specification: M/Y/F)	
EBS-08-BELT-KIT-P	EBS-08LR/LD/LL (Mounted motor specification: P)	
EBS-12-BELT-KIT-M	EBS-12LR/LD/LL (Mounted motor specification: M/Y)	
EBS-12-BELT-KIT-P	EBS-12LR/LD/LL (Mounted motor specification: P)	

■ Maintenance parts (origin sensor, limit sensor)


Model No.	Compatibility	Part
		
EBS-04-SENSOR-N-KIT	EBS-04	Body, cable, mounting plate (1 each) *1
EBS-08-SENSOR-N-KIT	EBS-05, EBS-08	Body, cable, mounting plate (1 each) *1
EBS-12-SENSOR-N-KIT	EBS-12	Body, cable, mounting plate (1 each) *1

*1 Mounting plate screws and sensor mounting screws are also included.

■ Maintenance parts (grease nozzle)

Model No.	Compatibility
	
EBS-NOZZLE	EBS-04, EBS-05, EBS-08

■ Maintenance parts (steel belt)

Model No.	Compatibility
	
EBS-04-STEELBELT (stroke code 4-digit)	EBS-04 (applicable stroke product)
EBS-05-STEELBELT (stroke code 4-digit)	EBS-05 (applicable stroke product)
EBS-08-STEELBELT (stroke code 4-digit)	EBS-08 (applicable stroke product)
EBS-12-STEELBELT (stroke code 4-digit)	EBS-12 (applicable stroke product)