

FANUC Robot CRX Series Compatible Gripper

CRX-10iA, CRX-10iA/L compatible

Indicator lamp 360° visible

Round shape with no protrusions or edges

Easy setting of finger open/close by switching directional control valve* and gripping power by adjusting regulator

* Option

Grip speed easily adjustable with speed adjustment knob

Air drive realizes high gripping power while being lightweight

Mountable on robots in just 2 minutes

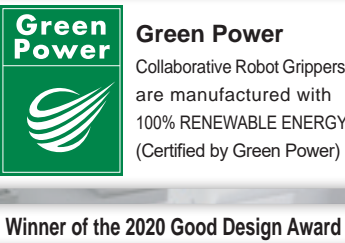
- 1 Mount dedicated flange on the robot
- 2 Turn the clamp ring to mount gripper
- 3 Connect the wiring connector

Mounting complete!

Enables gripper replacement without tools

- Through the adoption of a robot flange common to the entire series, changeover can be done simply by replacing the gripper.
- The simple gripper design enables replacement without tools: just turn the clamp ring by hand.

Air Grippers: High affinity for Collaborative Robots
RLSH/RHLF/RCKL-FN Series Pneumatic Gripper's air drive offers high gripping power while being light and compact. Easy setting enables use with any customer's collaborative robot.



3 models in the lineup to match your applications



RLSH Series Compact

Stroke : 18 mm
Gripping power: 42 N*
Weight : 0.8 kg



Compact body avoids interference with robot trajectory



RHLF Series Long Stroke

Stroke : 32 mm
Gripping power: 85 N*
Weight : 1.0 kg

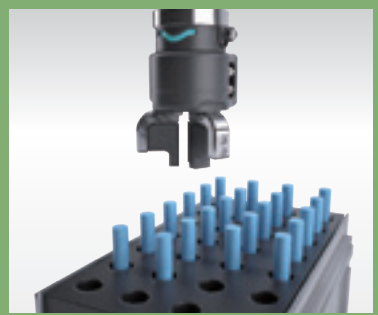


Low profile long stroke keeps height low



RCKL Series 3-Way Finger

Stroke : 10 mm
Gripping power: 125 N*
Weight : 1.1 kg

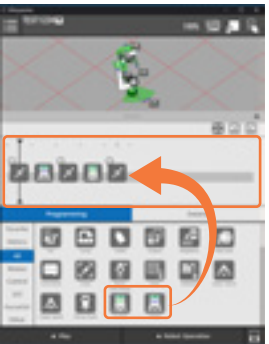


3-way finger ideal for round and cylindrical workpieces

*At supply pressure of 0.5MPa, finger length (ℓ) = 20mm, value at stroke center

Teaching time reduced to 1/10

The CKD Pneumatic Gripper plug-in software compatible with the FANUC Robot CRX Series enables dramatic reductions in teaching time with simple setting procedures and intuitive operation.



Drag and drop the command icons to create programs for the robot.



Set the digital I/O while viewing the gripper open/close status via graphic display.



Confirm the load setting information required for robot operation and designate load setting numbers while teaching the gripper to open/close.

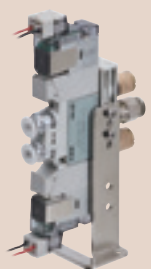
Total support for air systems

Various air components required for the gripper drive are available, enabling construction of the ideal system for each customer. (For details, refer to the CKD website (<https://www.ckd.co.jp/en/>).)

Valve

- Directional control valve
- Fitting
- Silencer
- Air tube

*Optionally, the above 4 items can be ordered as a set.



Other air systems

- Compact compressor (portable air supply unit)
- Filter, regulator
- Fitting
- Sensors
- Communication supported devices, etc.

*Purchase separately.

