

CKD Pneumatic Gripper Software Operation Method

This is an overview of the operation method for the CKD Pneumatic Gripper dedicated software. Refer to the Robot Manual and this product's Instruction Manual for details.

Software installation

Download the FANUC Robot CRX Series-dedicated Plug & Play software package from the CKD website (<https://www.ckd.co.jp/en/>) and install the file according to the directions in the Instruction Manual.

Installation setting screen

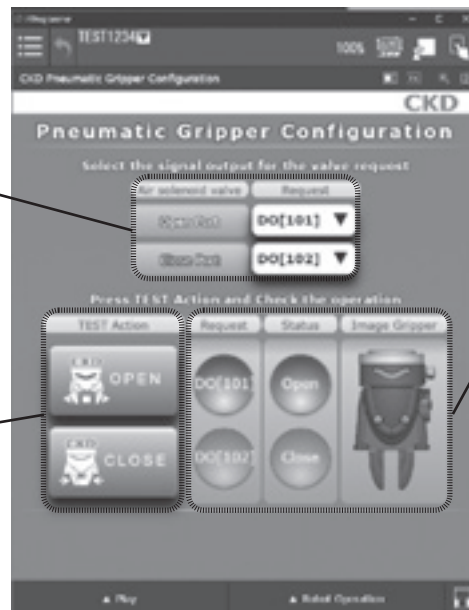
Set the digital I/O for the directional control valve opening and closing the gripper. Setting is possible while checking the actual open/close status via the graphic display, enabling easy confirmation that the signals are not reversed. To prevent workpieces from falling when the directional control valve signal is shut OFF, use a two-position double solenoid.

Directional control valve digital I/O setting

Set the digital I/O for open/close and the activating directional control valve.

Test button

Open/close action and I/O setting accuracy can be confirmed.



Graphic display

The gripper open/close status and built-in cylinder switch operational status are displayed with color changes.

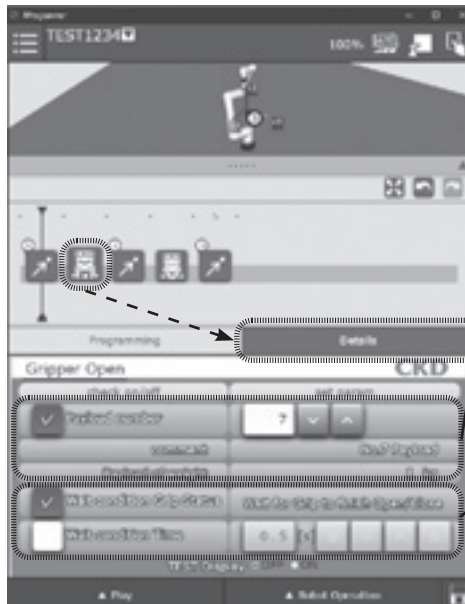
Program screen

Drag and drop the command icons to create programs for the robot. Detailed program setting is possible with each icon.

· Program creation



· Detailed parameter setting



Load setting

Load setting after gripper operation is possible. Designate the load number registered in the robot body to set a combination of total weight, center of gravity position, and inertia.

Standby conditions

The conditions for moving to the next operation after gripper operation can be set. As the standby condition, "Gripper operation finished" can be set.