



Certified Grippers for TECHMAN ROBOTS

Compatible with TM5-700/TM5-900/TM12/TM14



Indicator lamp visualizing 360°

Round shape with no protrusions or edges

Fingers are opened and closed by switching the directional control valve*, and gripping force is easily set by adjusting the regulator.

* Option

Grip speed easily adjustable with speed adjustment knob

Air drive realizes high gripping power while being lightweight

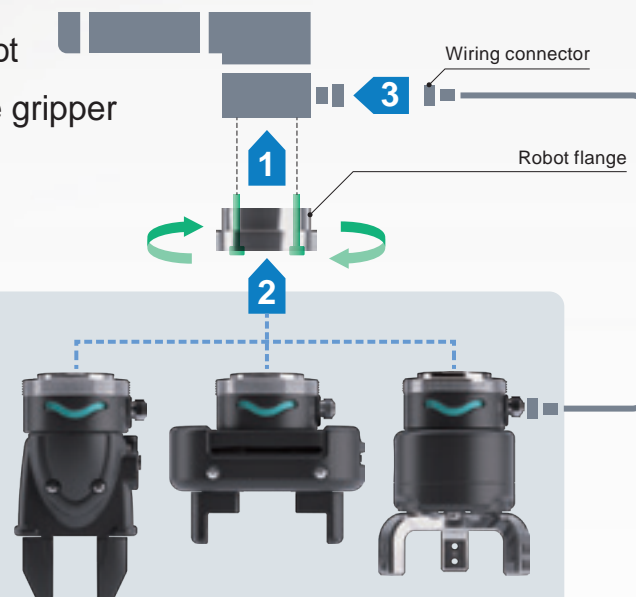
Mountable on robots in just 2 minutes

- 1 Mount dedicated flanges on the robot
- 2 Turn the clamp ring to mount the gripper
- 3 Connect the wiring connector

Mounting complete!

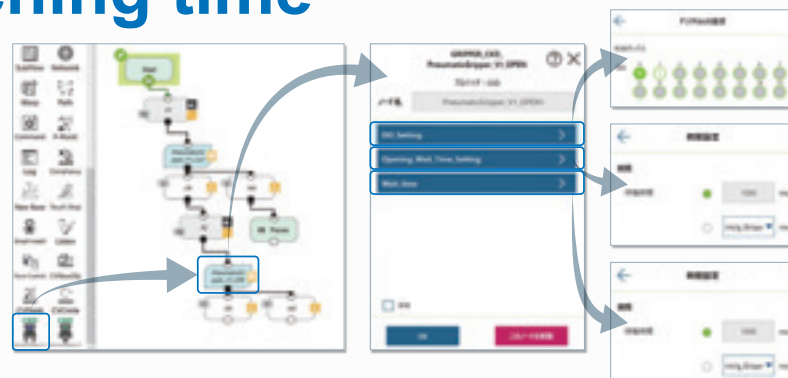
Enables gripper replacement without tools

- Through the adoption of a robot flange common to the entire series, changeover can be done simply by replacing the gripper.
- The simple gripper design enables replacement without tools: just turn the clamp ring by hand.



Reduced teaching time

With the dedicated software "Pneumatic Gripper", you can set the digital I/O settings, the timeout time for opening/closing the gripper, and the waiting time after opening/closing the gripper in one node.



Air gripper with high affinity for Collaborative Robots

The Grippers for Collaborative Robots RLSH/RHLF/RCKL-TM Series offers high gripping force while being compact and lightweight thanks to its air drive. Easy setting enables introduction to any customer's collaborative robot.

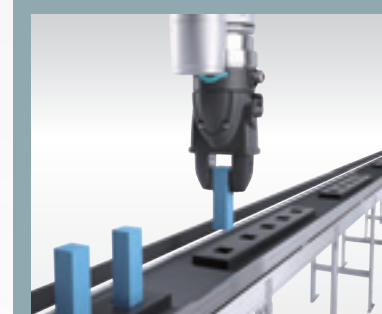


3 models lined up to match your applications



RLSH Series Compact

Stroke : 18 mm
Gripping force : 42 N*
Weight : 0.8 kg



Compact body avoids interference with robot trajectory



RHLF Series Long Stroke

Stroke : 32 mm
Gripping force : 85 N*
Weight : 1.0 kg

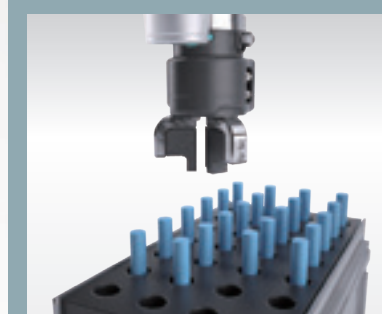


Thin long stroke keeps height low



RCKL Series 3-Way Finger

Stroke : 10 mm
Gripping force : 125 N*
Weight : 1.1 kg



3-way finger ideal for round and cylindrical workpieces

*At supply pressure of 0.5MPa, finger length (ℓ) = 20mm, value at stroke center

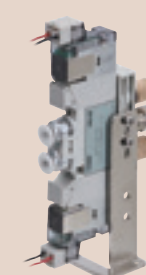
Total support for air systems

Various air components required for the gripper drive are available, enabling construction of the ideal system for each customer. (For details, refer to the CKD website (<https://www.ckd.co.jp/en/>).)

Valve

- Directional control valve
- Fitting
- Silencer
- Air tube

*Optionally, the above 4 items can be ordered as a set.



Other air systems

- Compact compressor (Portable Air Supply Unit)
- Filter, regulator
- Fitting
- Sensors
- Communication supported devices, etc.

*Purchase separately.

