



Indicator lamp visualizing 360°

Round shape with no protrusions or edges

Easy setting of finger open/close by switching directional control valve and gripping power by adjusting regulator

* Option

Grip speed easily adjustable with speed adjustment knob

Air drive realizes high gripping power while being lightweight

Air gripper with high affinity for Collaborative Robots

The Grippers for collaborative robots RLSH/RHLF/RCKL-TM Series offers high gripping power while being compact and lightweight thanks to its air drive. Easy setting enables introduction to any customer's collaborative robot.



Winner of the 2020 Good Design Award

3 models lined up to match your applications



RLSH Series Compact

Stroke : 18 mm
Gripping power : 42 N*
Weight : 0.8 kg



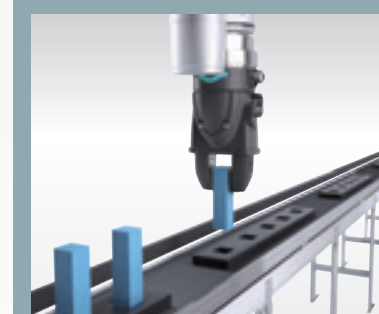
RHLF Series Long Stroke

Stroke : 32 mm
Gripping power : 85 N*
Weight : 1.0 kg



RCKL Series 3-Way Finger

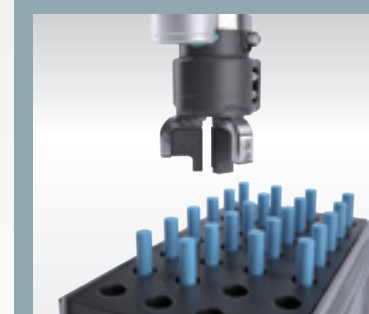
Stroke : 10 mm
Gripping power : 125 N*
Weight : 1.1 kg



Compact body avoids interference with robot trajectory



Thin long stroke keeps height low



3-way finger ideal for round and cylindrical workpieces

*At supply pressure of 0.5MPa, finger length (ℓ) = 20mm, value at stroke center

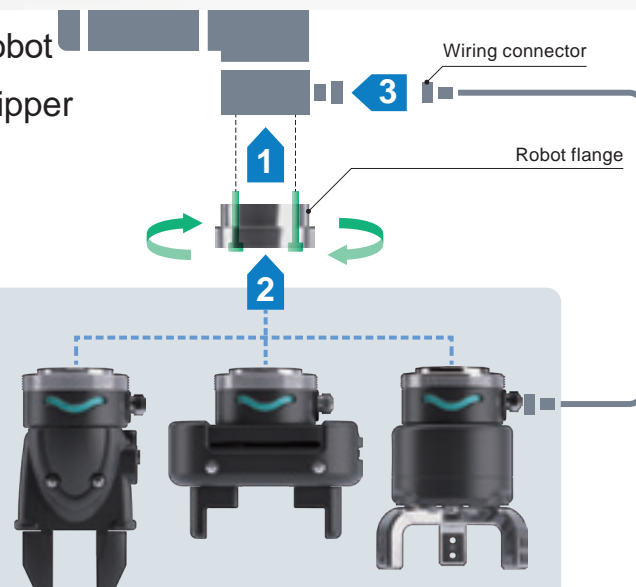
Mountable on robots in just 2 minutes

- 1 Mount dedicated flange on the robot
- 2 Turn the clamp ring to mount gripper
- 3 Connect the wiring connector

Mounting complete!

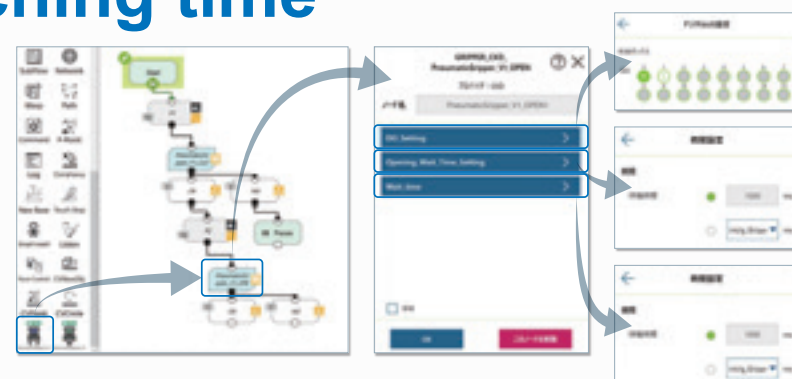
Enables gripper replacement without tools

- Through the adoption of a robot flange common to the entire series, changeover can be done simply by replacing the gripper.
- The simple gripper design enables replacement without tools: just turn the clamp ring by hand.



Reduced teaching time

With the dedicated software "Pneumatic Gripper", you can set the digital I/O settings, the timeout time for opening/closing the gripper, and the waiting time after opening/closing the gripper in one node.



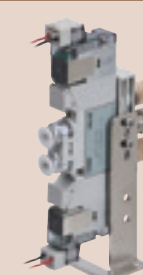
Total support for air systems

Various air components required for the gripper drive are available, enabling construction of the ideal system for each customer. (For details, refer to the CKD website (<https://www.ckd.co.jp/en/>).)

Valve

- Directional control valve
- Fitting
- Silencer
- Air tube

*Optionally, the above 4 items can be ordered as a set.



Other air systems

- Compact compressor (Portable Air Supply Unit)
- Filter, regulator
- Fitting
- Sensors
- Communication supported devices, etc.

*Purchase separately.

