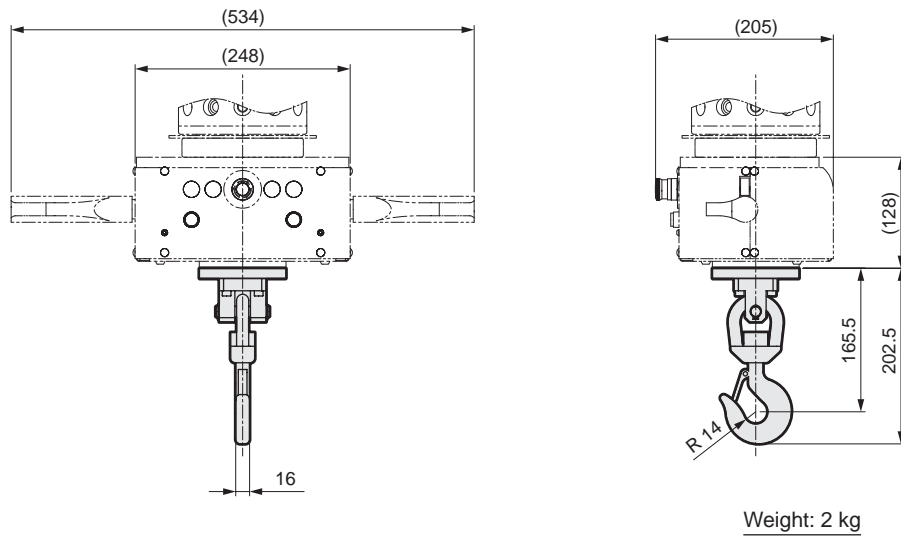


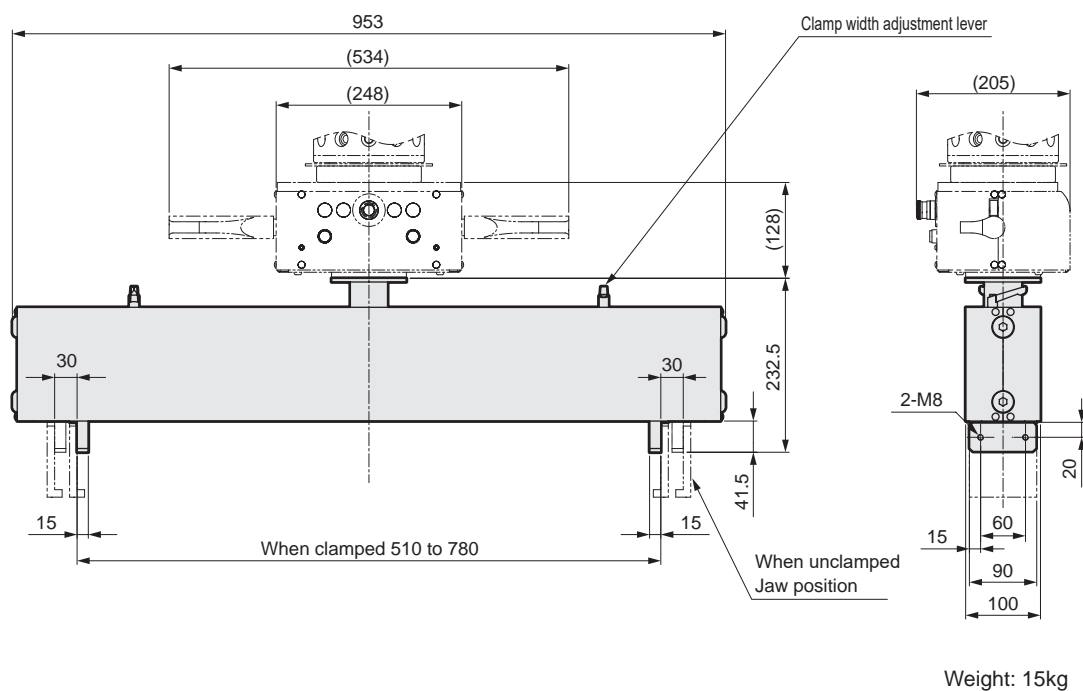
# Attachment

The shape and weight are provided for reference. We will design attachments according to workpiece shapes used by our customers.

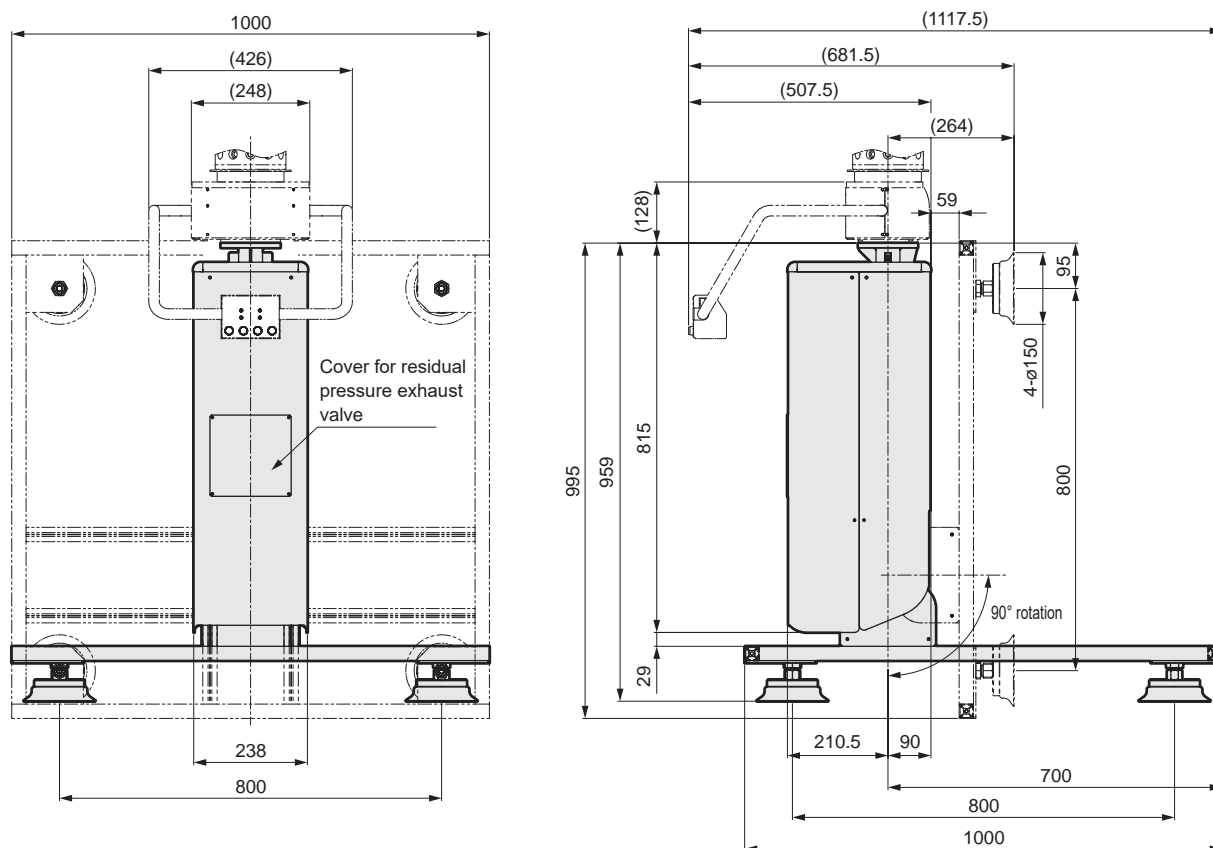
## ● Hook attachment (PAW-JF)



## ● Clamp attachment (PAW-JC)

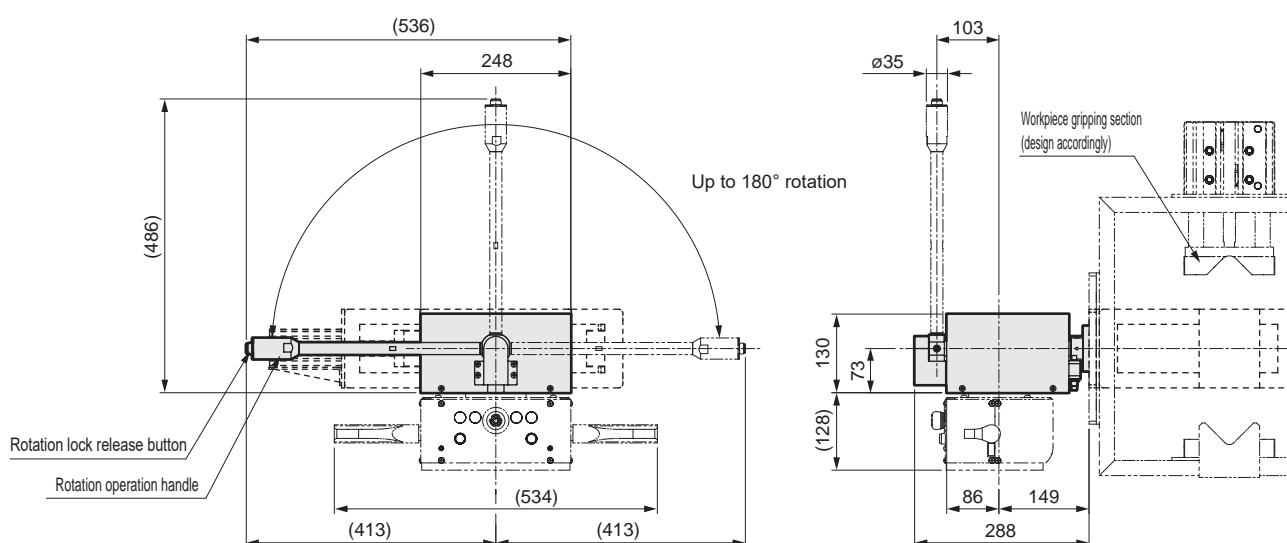


## ● Sheet suction attachment (PAW- JV)



Weight: 40kg

## ● Rotating attachment for material input (PAW-JR)



Weight: 25kg