

Smallest explosion-proof class

Intrinsically safe valve widths from 10mm

4GD/E1 to 4 Series

Explosion-proof solenoid valve

Explosion-proof performance II 2G Ex ib IIC T4 Gb

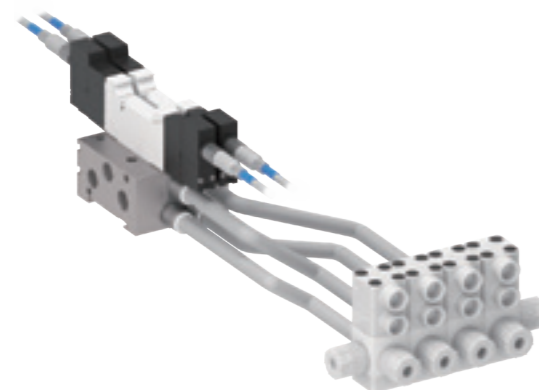
IBExU 19ATEX1035

Degree of protection

IP67

Space saving/lightweight Ideal for narrow explosion-proof areas.

Two 3-port valves integrated type lined up

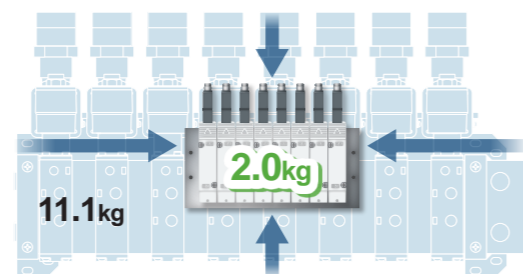


4GE3 and 4F3 footprint and weight comparison

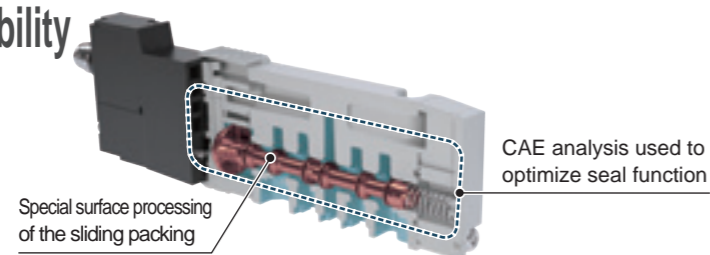
Footprint
84%
Reduced

Ultra-lightweight
82%
Reduced

*Conventional 8-station model comparison

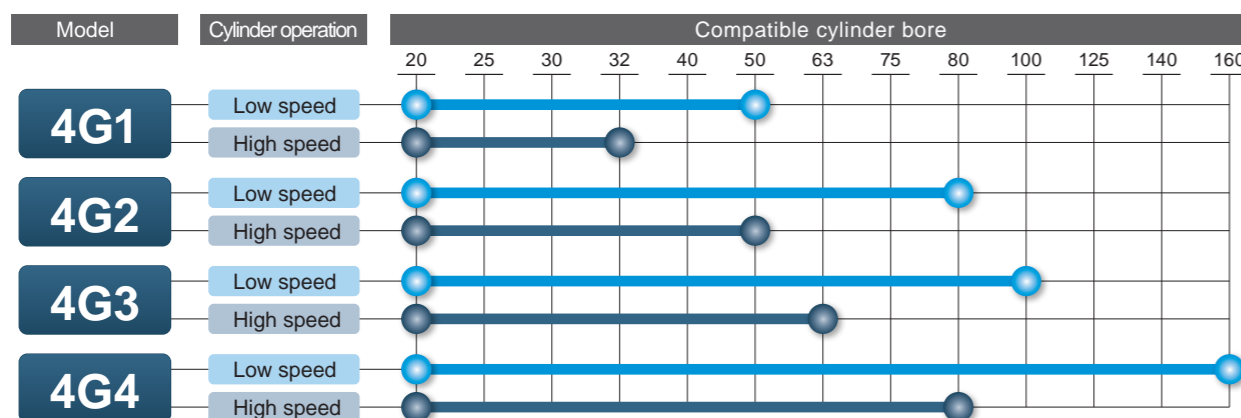


High durability



Durability count
50
million

Wide-ranging series lineup



* The table is for reference. Varies according to piping conditions, load factor, etc.
For details of component selection, refer to Pneumatic Valves (No. CB-023SA) system selection.

High environmental performance, reliability and ease of use

Prevents manual misoperation

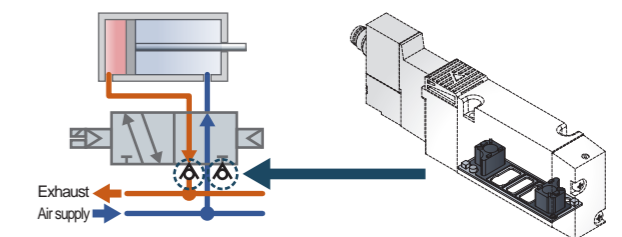
Manual override has a protective cover.



Helps prevent misoperation problems

[Exhaust check valve]

Equipped as standard with both metal base and resin block.
(4G*1 to 4G*3 EA compatible)



2-direction wiring outlet

Wiring direction can be selected according to the solenoid valve installation location.



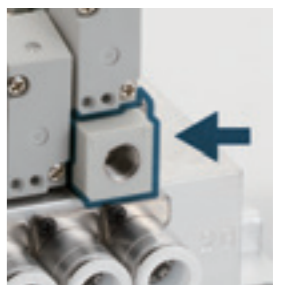
Air supply/exhaust spacer

[Air supply spacer]

Pressure can be changed and air supplied for each valve.
Ideal for cylinder thrust adjustment by increasing/decreasing individual valve pressure.

[Exhaust spacer]

Individual exhaust prevents single acting cylinder malfunction.



Applications Ideal explosion-proof specifications for narrow spaces

Coating equipment



Liquid conditioning equipment



Analysis equipment



Solenoid valve space can be greatly reduced when intrinsic safety explosion-proof structures are required.