



CONTENTS

Product introduction	Intro
● Specifications/How to order/Dimensions	
• FFLD-08	2
• FFLD-30	4
• FFLD-50	6
● System configuration	18
● Field Network Description	19
● Model selection	20
● Technical data	22
⚠ Safety precautions	24
Model Selection Check Sheet	32



Electric Actuator 2-Finger Gripper

FFLD-08

☐ 20 Stepper motor



How to order

FFLD - **08** **50** **N C N 30** - **LK** **S** **R00**

A Gripping force

08	80N
-----------	-----

C Interface specification

LK	IO-Link
-----------	---------

B Stroke

50	100 mm (single side 50 mm)
-----------	----------------------------

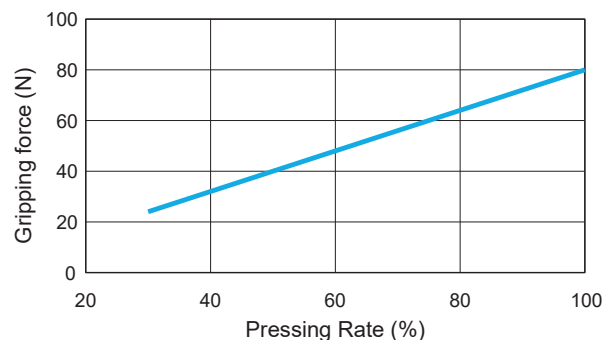
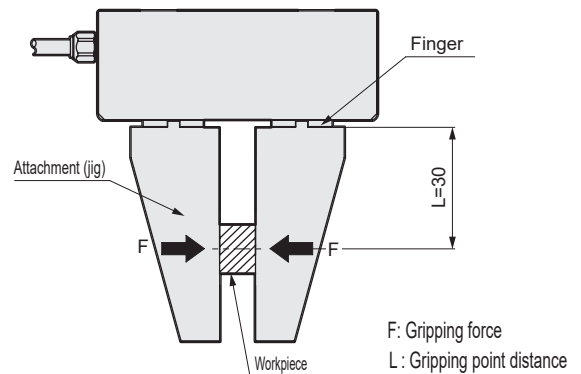
D Relay cable

R00	Movable cable
------------	---------------

Specifications

Gripping force and pressing rate

System Configuration	Motor	<input type="checkbox"/> 20 stepper motor	
	Encoder type	Incremental encoder	
	Drive method	Rack and pinion, worm gear	
	Controller	Built in	
Field Network Description	Stroke	mm	100 (50 per side)
	Max. gripping force *1	N	80 (per side)
	Open/close speed range	mm/s	1 to 10 (per side)
	Gripping speed range *1	mm/s	1 to 5 (per side)
Model Selection	Repeatability *2	mm	±0.02
	Positioning repeatability *3	mm	±0.05 (per side)
	Lost motion	mm	0.4 or less (per side)
	Static allowable moment	N·m	MP: 15, MY: 15, MR: 15
Technical Data	Settings tool	Setting software (S-Tools)	
	External interface	IO-Link	
	Power supply voltage	Communication/control	24 VDC ±10%
		Power	24 VDC ±10%
Safety Precautions	Current consumption	Communication/control	A 0.2 or less
		Power	A 1.1 or less
	Motor section max. instantaneous current	A	1.5
	Power capacity	Max. 100 W	
	Insulation resistance	10 MΩ, 500 VDC	
	Withstand voltage	500 VAC for 1 minute	
	Operating ambient temperature, humidity	0 to 40 °C (no freezing) 35 to 80% RH (no condensation)	
	Storage ambient temperature, humidity	-10 to 50°C (no freezing) 35 to 80% RH (no condensation)	
	Atmosphere	No corrosive gas, explosive gas, or dust	
	Degree of protection	IP20	
	Weight	kg	1.2



* The correlation diagram of the gripping force and pressing rate shows a guideline. Individual motor differences and variations in mechanical efficiency may result in differing actual values, even at the same pressing rate.

* Gripping speed is for 5mm/s. (L=30)

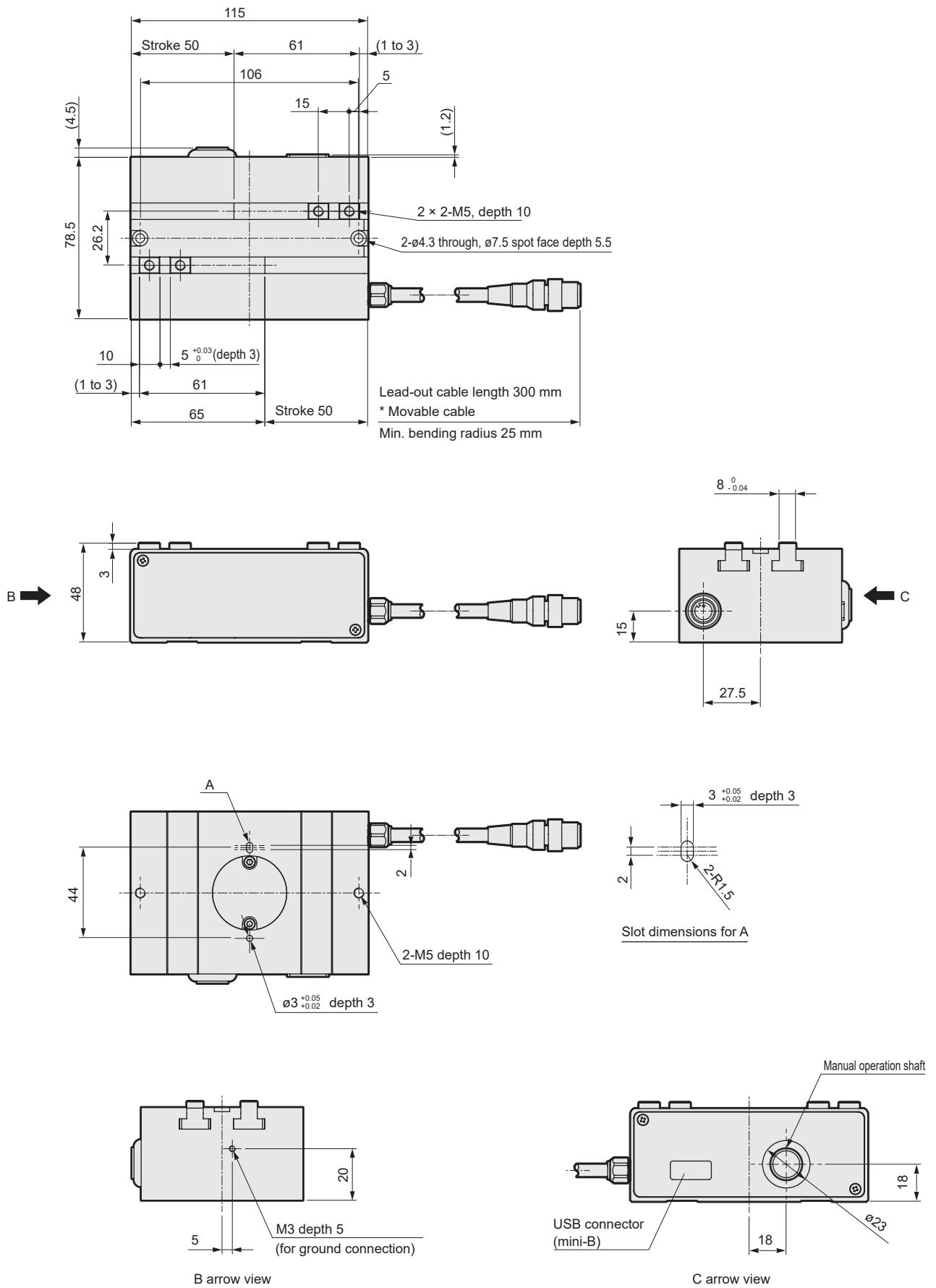
* The setting range for the pressing rate is 30 to 100%.

*1 Gripping is done with pressing operation.

*2 Repeat accuracy indicates the variation when the same workpiece is repeatedly gripped at the same force, under the same operation conditions.

*3 The stop position will vary if positioning repeatability is checked using the same point.

Dimensions



FFLD

FFLD
(High speed)

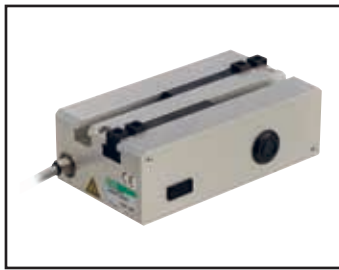
System
Configuration

Field Network
Description

Model Selection

Technical Data

Safety
Precautions



Electric Actuator 2-Finger Gripper

FFLD-30

□ 25L stepping motor



How to order

FFLD - **30** **70** **N C N 30** - **LK** **S** **R 00**

A Gripping force

30	300 N
-----------	-------

C Interface specification

LK	IO-Link
-----------	---------

B Stroke

70	140 mm (single side 70 mm)
-----------	----------------------------

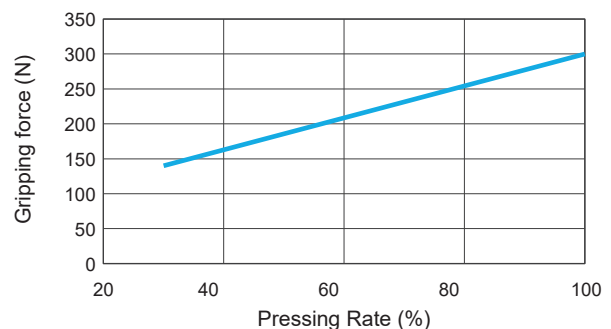
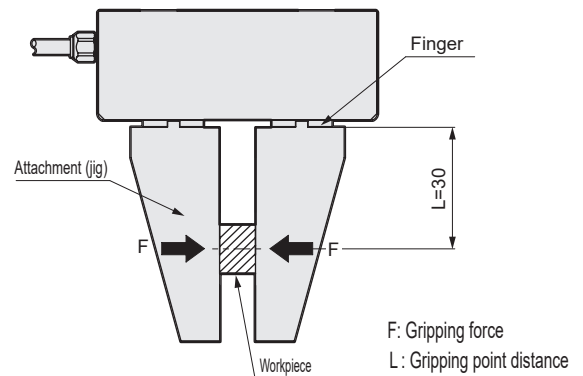
D Relay cable

R00	Movable cable
------------	---------------

Specifications

Gripping force and pressing rate

System Configuration	Motor	□ 25L stepper motor	
	Encoder type	Incremental encoder	
	Drive method	Rack and pinion, worm gear	
	Controller	Built in	
Field Network Description	Stroke	mm	140 (70 per side)
	Max. gripping force *1	N	300 (per side)
	Open/close speed range	mm/s	1 to 10 (per side)
	Gripping speed range *1	mm/s	1 to 5 (per side)
Model Selection	Repeatability *2	mm	±0.02
	Positioning repeatability *3	mm	±0.05 (per side)
	Lost motion	mm	0.4 or less (per side)
	Static allowable moment	N·m	MP: 45, MY: 45, MR: 45
Technical Data	Settings tool	Setting software (S-Tools)	
	External interface	IO-Link	
	Power supply voltage	Communication/control	24 VDC ±10%
		Power	24 VDC ±10%
Safety Precautions	Current consumption	Communication/control	A 0.2 or less
		Power	A 3.2 or less
	Motor section max. instantaneous current	A	4.0
	Power capacity	Max. 100 W	
	Insulation resistance	10 MΩ, 500 VDC	
	Withstand voltage	500 VAC for 1 minute	
	Operating ambient temperature, humidity	0 to 40 °C (no freezing) 35 to 80% RH (no condensation)	
	Storage ambient temperature, humidity	-10 to 50 °C (no freezing) 35 to 80% RH (no condensation)	
	Atmosphere	No corrosive gas, explosive gas, or dust	
	Degree of protection	IP20	
	Weight	kg	1.7



* The correlation diagram of the gripping force and pressing rate shows a guideline. Individual motor differences and variations in mechanical efficiency may result in differing actual values, even at the same pressing rate.

* Gripping speed is for 5mm/s. (L=30)

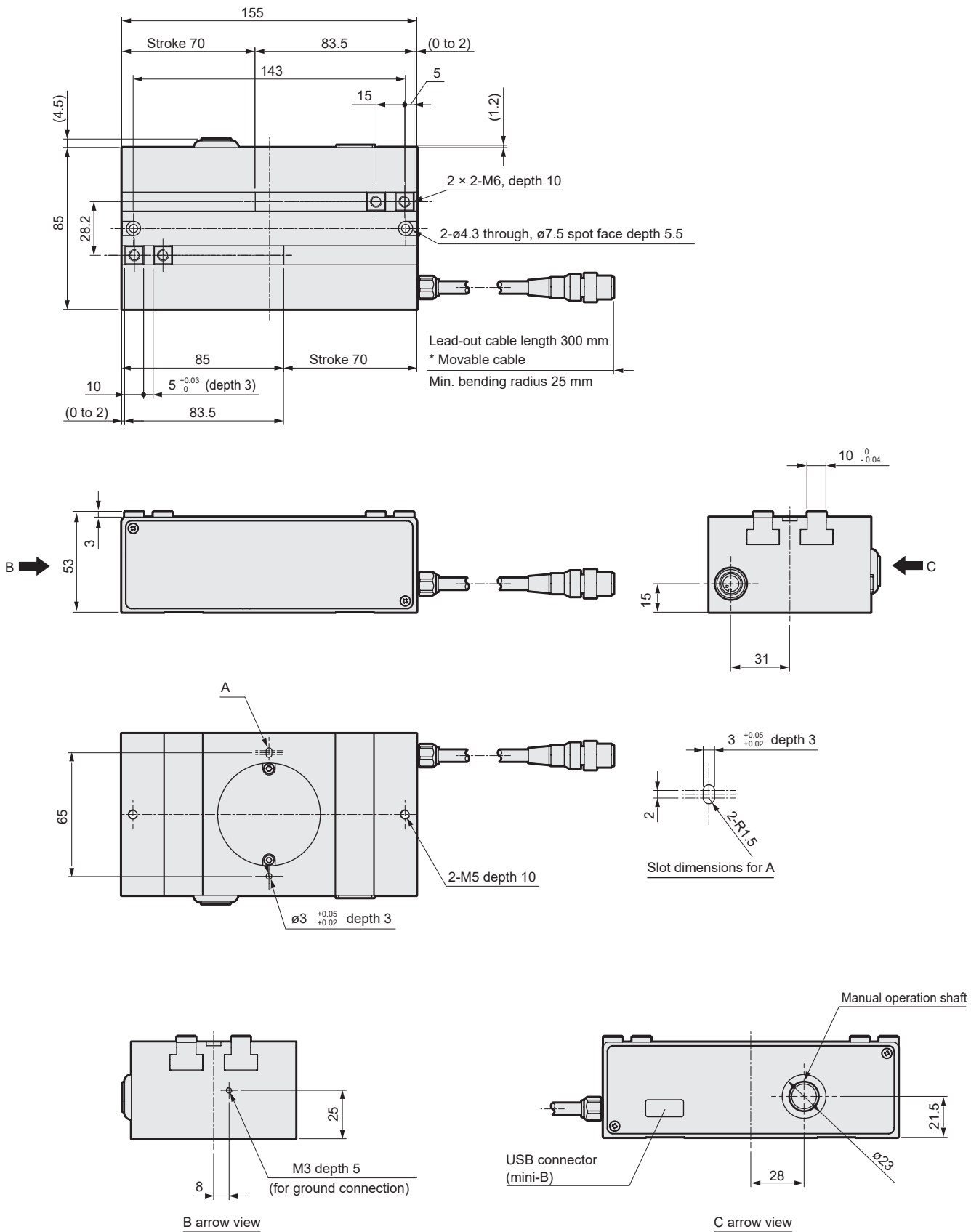
* The setting range for the pressing rate is 30 to 100%.

*1 Gripping is done with pressing operation.

*2 Repeat accuracy indicates the variation when the same workpiece is repeatedly gripped at the same force, under the same operation conditions.

*3 The stop position will vary if positioning repeatability is checked using the same point.

Dimensions



FFLD

FFLD
(High speed)

System
Configuration

Field Network
Description

Model Selection

Technical Data

Safety
Precautions



Electric Actuator 2-Finger Gripper

FFLD-50

□ 25L stepping motor



How to order

FFLD - **50** **80** **N C N 30** - **LK** **S** **R 00**

A Gripping force

50	500 N
-----------	-------

C Interface specification

LK	IO-Link
-----------	---------

B Stroke

80	160 mm (single side 80 mm)
-----------	----------------------------

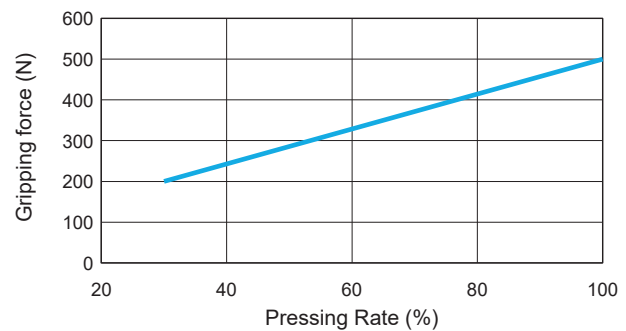
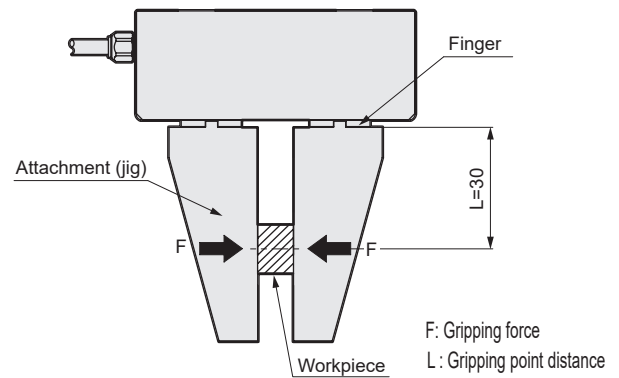
D Relay cable

R00	Movable cable
------------	---------------

Specifications

Gripping force and pressing rate

Motor	□ 25L stepper motor
Encoder type	Incremental encoder
Drive method	Rack and pinion, worm gear
Controller	Built in
Stroke	mm 160 (80 per side)
Max. gripping force *1	N 500 (per side)
Open/close speed range	mm/s 1 to 10 (per side)
Gripping speed range *1	mm/s 1 to 5 (per side)
Repeatability *2	mm ±0.02
Positioning repeatability *3	mm ±0.05 (per side)
Lost motion	mm 0.4 or less (per side)
Static allowable moment	N·m MP: 64, MY: 55, MR: 64
Settings tool	Setting software (S-Tools)
External interface	IO-Link
Power supply	Communication/control 24 VDC ±10%
voltage	Power 24 VDC ±10%
Current	Communication/control A 0.2 or less
consumption	Power A 3.2 or less
Motor section max. instantaneous current	A 4.0
Power capacity	Max. 100 W
Insulation resistance	10 MΩ, 500 VDC
Withstand voltage	500 VAC for 1 minute
Operating ambient temperature, humidity	0 to 40 °C (no freezing) 35 to 80% RH (no condensation)
Storage ambient temperature, humidity	-10 to 50 °C (no freezing) 35 to 80% RH (no condensation)
Atmosphere	No corrosive gas, explosive gas, or dust
Degree of protection	IP20
Weight	kg 2.5



* The correlation diagram of the gripping force and pressing rate shows a guideline. Individual motor differences and variations in mechanical efficiency may result in differing actual values, even at the same pressing rate.

* Gripping speed is for 5mm/s. (L=30)

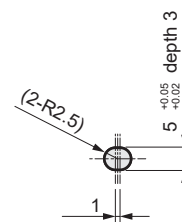
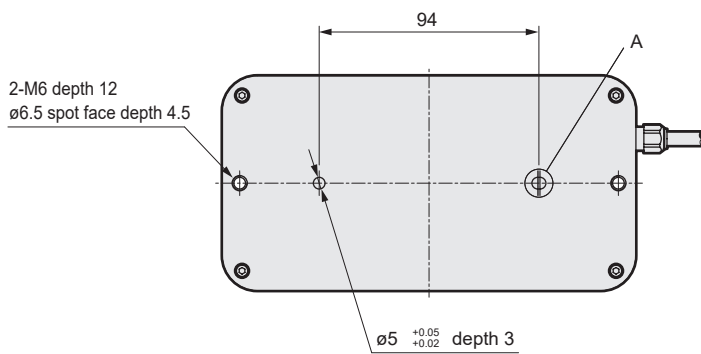
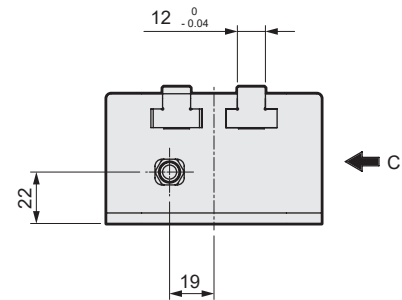
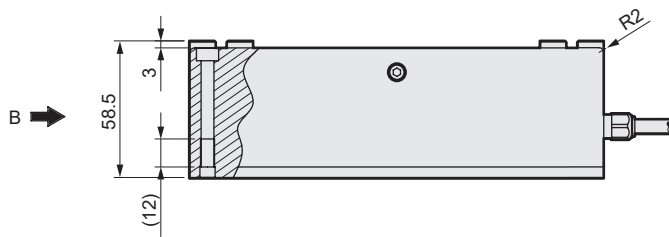
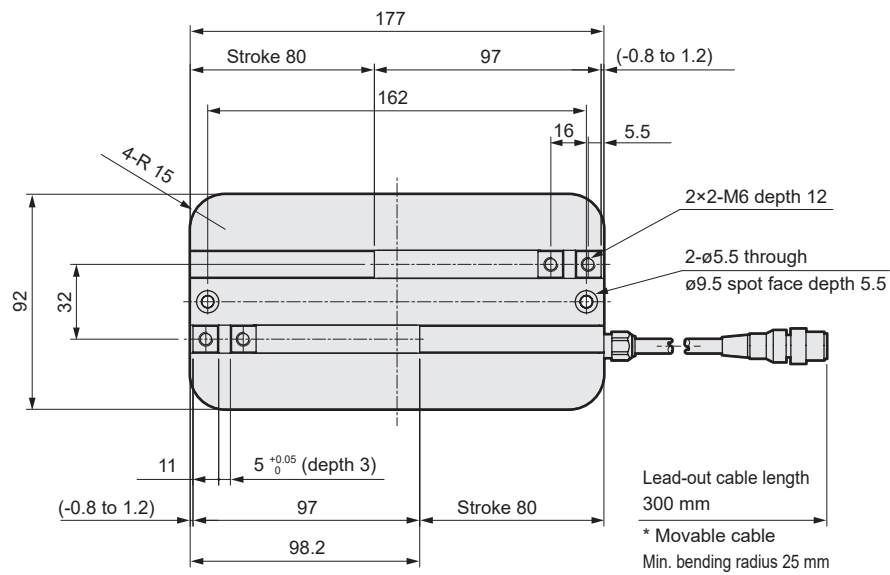
* The setting range for the pressing rate is 30 to 100%.

*1 Gripping is done with pressing operation.

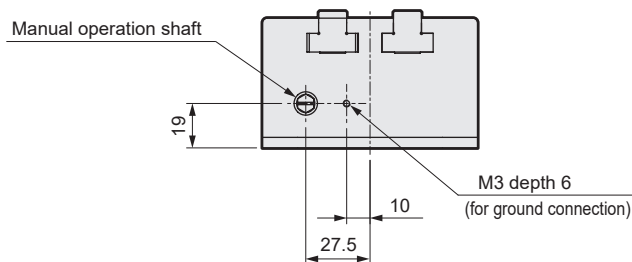
*2 Repeat accuracy indicates the variation when the same workpiece is repeatedly gripped at the same force, under the same operation conditions.

*3 The stop position will vary if positioning repeatability is checked using the same point.

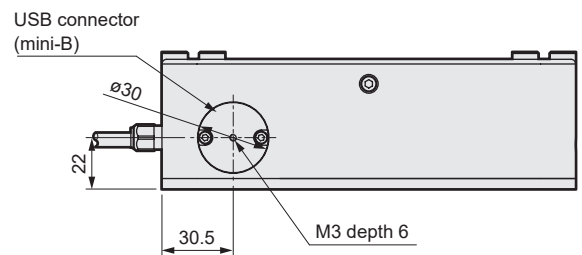
Dimensions



Slot dimensions for A



B arrow view



C arrow view

FFLD

FFLD
(High speed)

System
Configuration

Field Network
Description

Model Selection

Technical Data

Safety
Precautions

Safety
Precautions

Technical Data

Model Selection

Field Network
Description

System
Configuration

FFLD
(High speed)

FFLD

FFLD-H

2-Finger Gripper high speed



CONTENTS

Product introduction	Intro
● Specifications/How to order/Dimensions	
• FFLD-04H	10
• FFLD-12H	12
• FFLD-30H	14
• FFLD-50H	16
● System configuration	18
● Field Network Description	19
● Model selection	20
● Technical data	22
⚠ Safety precautions	24
Model Selection Check Sheet	32



Electric Actuator 2-Finger Gripper High speed

FFLD-04H

☐ 20 Stepper motor



How to order

FFLD - **04** **H** **50** **N C N 30** - **LK** **S** **R00**

A Gripping force
04 40N

C Interface specification
LK IO-Link

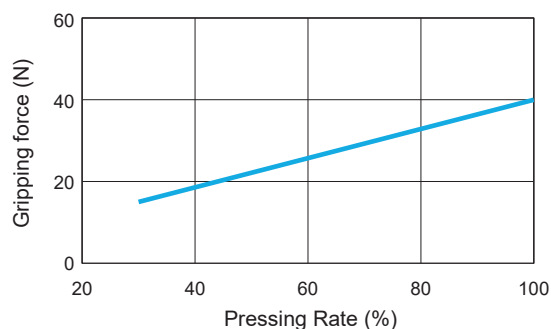
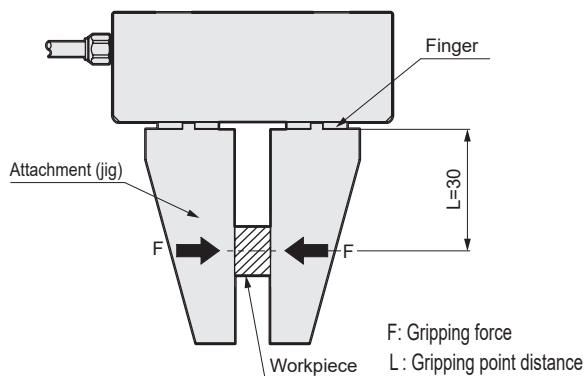
B Stroke
50 100 mm (single side 50 mm)

D Relay cable
R00 Movable cable

Specifications

Gripping force and pressing rate

Motor	<input type="checkbox"/> 20 Stepper motor
Encoder-type	Incremental encoder
Drive method	Rack and pinion, worm gear
Controller	Built in
Stroke	mm 100 (50 per side)
Max. gripping force *1	N 40 (per side)
Open/close speed range	mm/s 1 to 30 (per side)
Gripping speed range *1	mm/s 1 to 5 (per side)
Repeatability *2	mm ±0.02
Positioning repeatability *3	mm ±0.05 (per side)
Lost motion	mm 0.4 or less (per side)
Static allowable moment	N·m MP: 15, MY: 15, MR: 15
Settings tool	Setting software (S-Tools)
External interface	IO-Link
Power supply	Communication/control 24 VDC ±10%
Power	24 VDC ±10%
Current	Communication/control A 0.2 or less
consumption	Power A 1.1 or less
Motor section max. instantaneous current	A 1.5
Power capacity	Max. 100 W
Insulation resistance	10 MΩ, 500 VDC
Withstand voltage	500 VAC for 1 minute
Operating ambient temperature, humidity	0 to 40 °C (no freezing) 35 to 80% RH (no condensation)
Storage ambient temperature, humidity	-10 to 50 °C (no freezing) 35 to 80% RH (no condensation)
Atmosphere	No corrosive gas, explosive gas, or dust
Degree of protection	IP20
Weight	kg 1.2



* The correlation diagram of the gripping force and pressing rate shows a guideline. Individual motor differences and variations in mechanical efficiency may result in differing actual values, even at the same pressing rate.

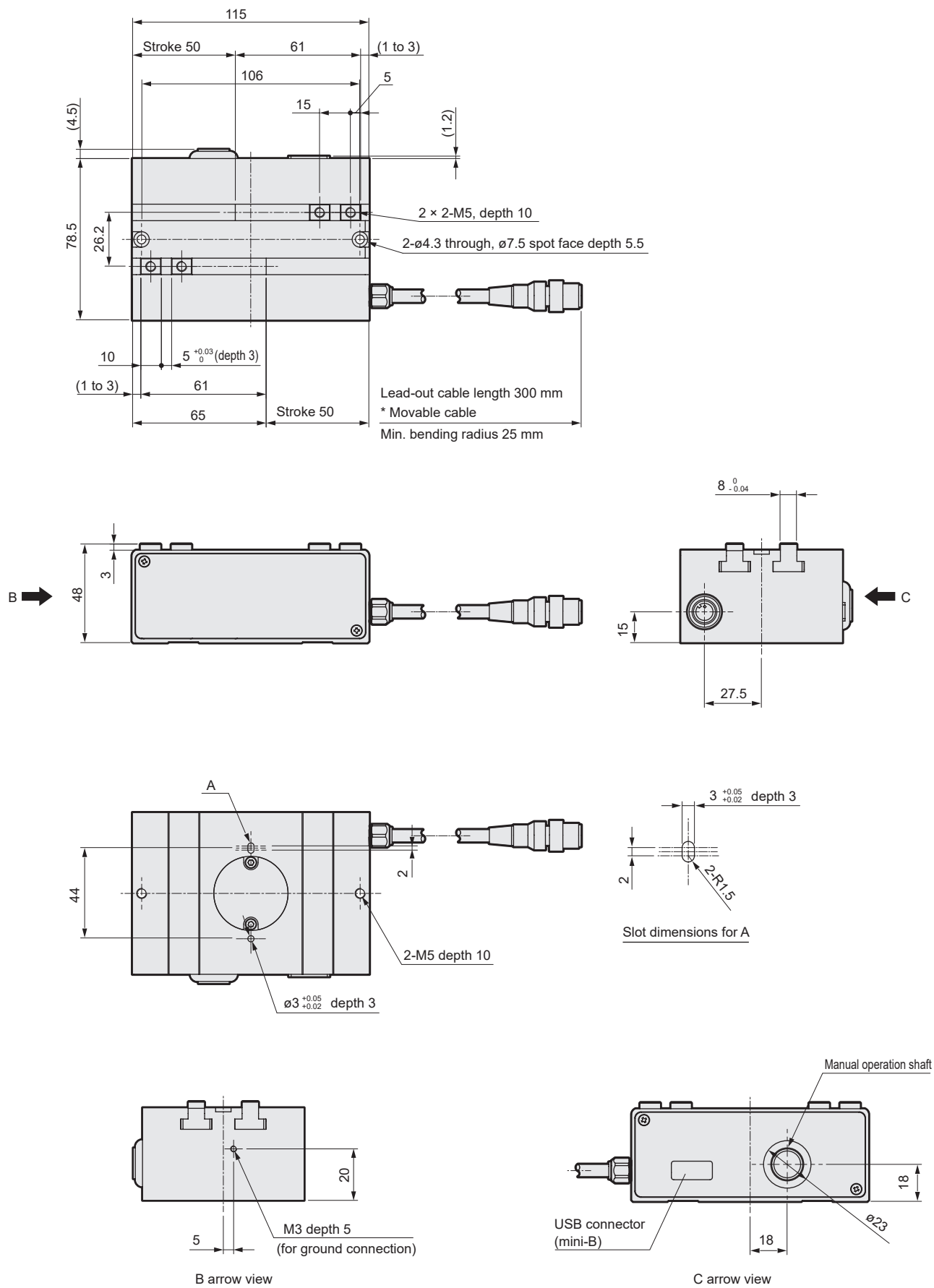
* Gripping speed is for 5mm/s. (L=30)

* The setting range for the pressing rate is 30 to 100%.

*1 Gripping is done with pressing operation.

*2 Repeatability indicates variation when the same workpieces are gripped repeatedly with the same operating conditions.

*3 The variation of stopping position when positioning is repeatedly performed to the same point is shown.



FFLD

FFLD
(High speed)

System
Configuration

Field Network
Description

Model Selection

Technical Data

Safety
Precautions



Electric Actuator 2-Finger Gripper High speed

FFLD-12H

□ 25L stepping motor



How to order

FFLD - **12** **H** **70** **N C N 30** - **LK** **S** **R 00**

A Gripping force

12 120N

C Interface specification

LK IO-Link

B Stroke

70 140 mm (single side 70 mm)

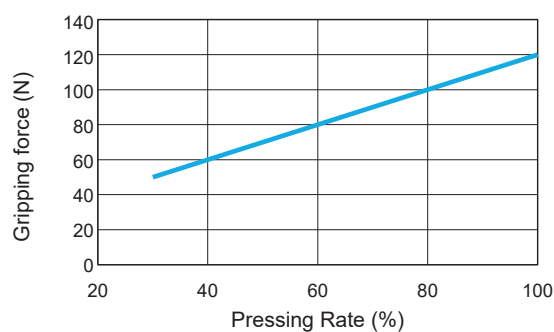
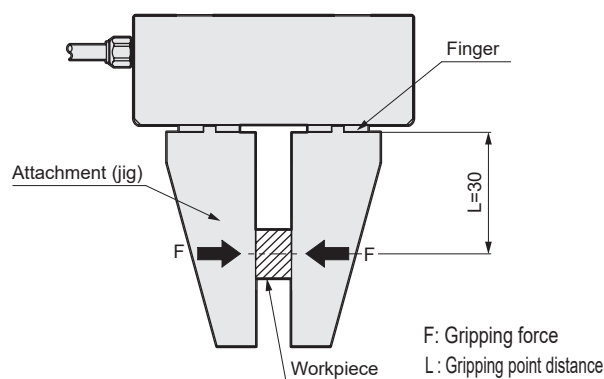
D Relay cable

R00 Movable cable

Specifications

Gripping force and pressing rate

System Configuration	Motor	□ 25L stepping motor	
	Encoder-type	Incremental encoder	
	Drive method	Rack and pinion, worm gear	
	Controller	Built in	
Field Network Description	Stroke	mm	140 (70 per side)
	Max. gripping force *1	N	120 (per side)
	Open/close speed range	mm/s	1 to 30 (per side)
	Gripping speed range *1	mm/s	1 to 5 (per side)
Model Selection	Repeatability *2	mm	±0.02
	Positioning repeatability *3	mm	±0.05 (per side)
	Lost motion	mm	0.4 or less (per side)
	Static allowable moment	N·m	MP=45, MY=45, MR=45
Technical Data	Settings tool	Setting software (S-Tools)	
	External interface	IO-Link	
	Power supply voltage	Communication/control	24 VDC ±10%
		Power	24 VDC ±10%
Safety Precautions	Current consumption	Communication/control	A 0.2 or less
		Power	A 3.2 or less
	Motor section max. instantaneous current	A	4.0
	Power capacity	Max. 100 W	
	Insulation resistance	10 MΩ, 500 VDC	
	Withstand voltage	500 VAC for 1 minute	
	Operating ambient temperature, humidity	0 to 40 °C (no freezing) 35 to 80% RH (no condensation)	
	Storage ambient temperature, humidity	-10 to 50 °C (no freezing) 35 to 80% RH (no condensation)	
	Atmosphere	No corrosive gas, explosive gas, or dust	
	Degree of protection	IP20	
	Weight	kg	1.7



* The correlation diagram of the gripping force and pressing rate shows a guideline. Individual motor differences and variations in mechanical efficiency may result in differing actual values, even at the same pressing rate.

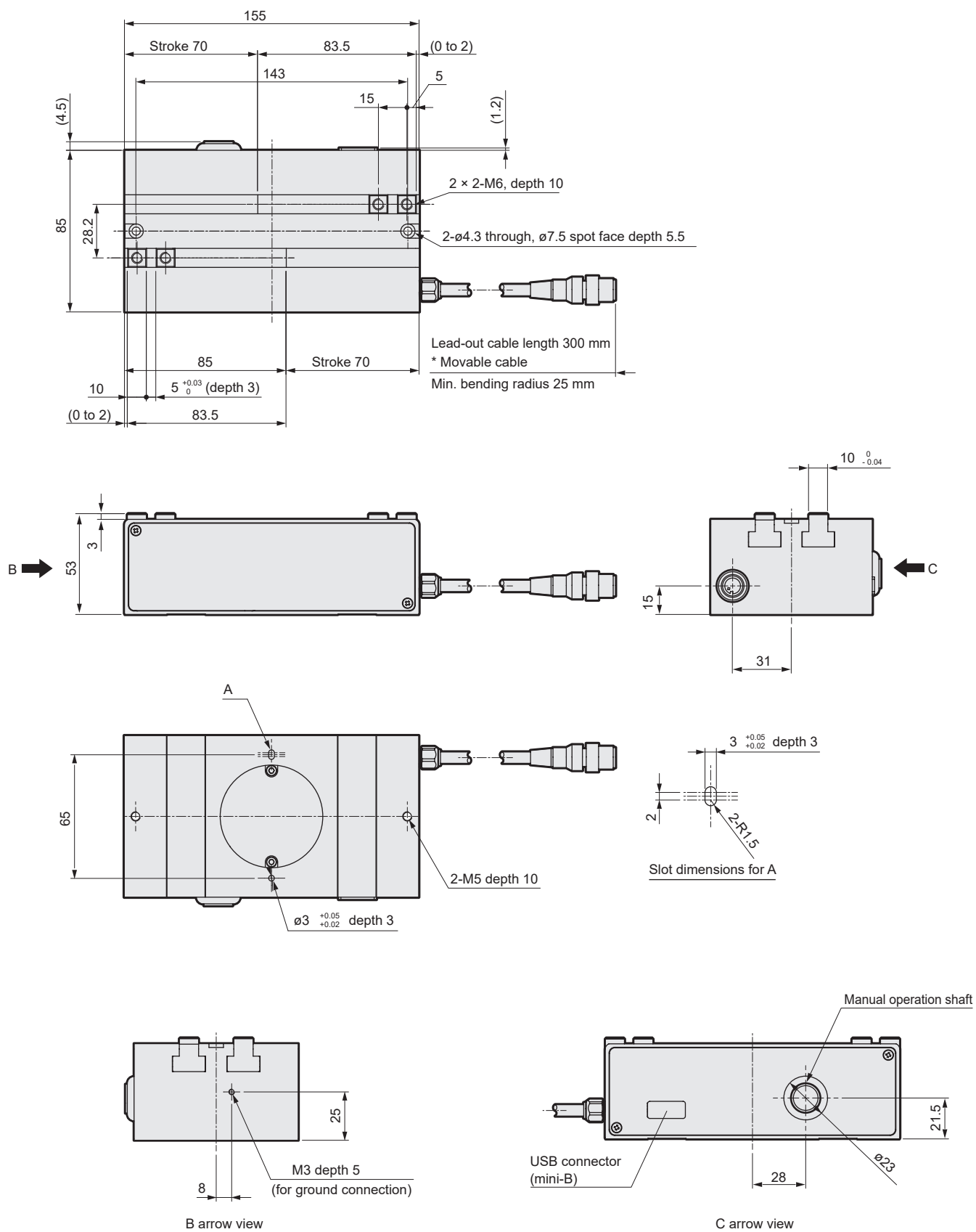
* Gripping speed is for 5mm/s. (L=30)

* The setting range for the pressing rate is 30 to 100%.

*1 Gripping is done with pressing operation.

*2 Repeatability indicates variation when the same workpieces are gripped repeatedly with the same operating conditions.

*3 The variation of stopping position when positioning is repeatedly performed to the same point is shown.





Electric actuator 2-finger Gripper high speed

FFLD-30H

□ 25L stepping motor



How to order

FFLD - **30** **H** **70** **N C N 30** - **LK** **S** **R00**

A Gripping force
30 300 N

C Interface specification
LK IO-Link

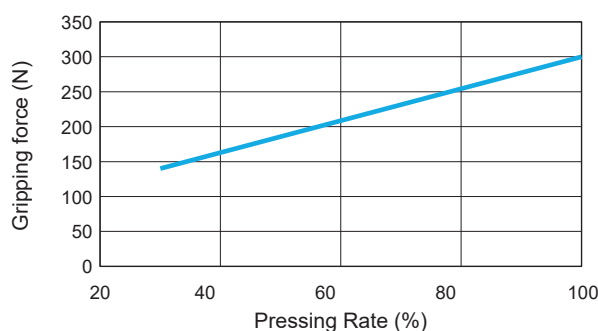
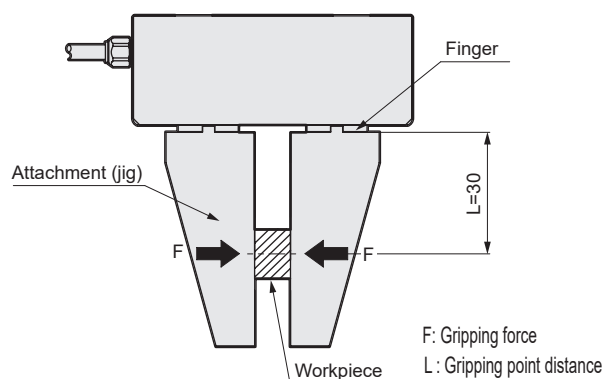
B Stroke
70 140 mm (single side 70 mm)

D Relay cable
R00 Movable cable

Specifications

Gripping force and pressing rate

Motor	□ 25L stepping motor
Encoder-type	Incremental encoder
Drive method	Rack and pinion, worm gear
Controller	Built in
Stroke	mm 140 (70 per side)
Max. gripping force *1	N 300 (per side)
Open/close speed range	mm/s 1 to 30 (per side)
Gripping speed range *1	mm/s 1 to 5 (per side)
Repeatability *2	mm ±0.02
Positioning repeatability *3	mm ±0.05 (per side)
Lost motion	mm 0.4 or less (per side)
Static allowable moment	N·m MP=45, MY=45, MR=45
Settings tool	Setting software (S-Tools)
External interface	IO-Link
Power supply	Communication/control 24 VDC ±10%
Power	24 VDC ±10%
Current	Communication/control A 0.2 or less
Power consumption	A 3.2 or less
Motor section max. instantaneous current	A 4.0
Power capacity	Max. 100 W
Insulation resistance	10 MΩ, 500 VDC
Withstand voltage	500 VAC for 1 minute
Operating ambient temperature, humidity	0 to 40 °C (no freezing) 35 to 80% RH (no condensation)
Storage ambient temperature, humidity	-10 to 50 °C (no freezing) 35 to 80% RH (no condensation)
Atmosphere	No corrosive gas, explosive gas, or dust
Degree of protection	IP20
Weight	kg 1.7



* The correlation diagram of the gripping force and pressing rate shows a guideline. Individual motor differences and variations in mechanical efficiency may result in differing actual values, even at the same pressing rate.

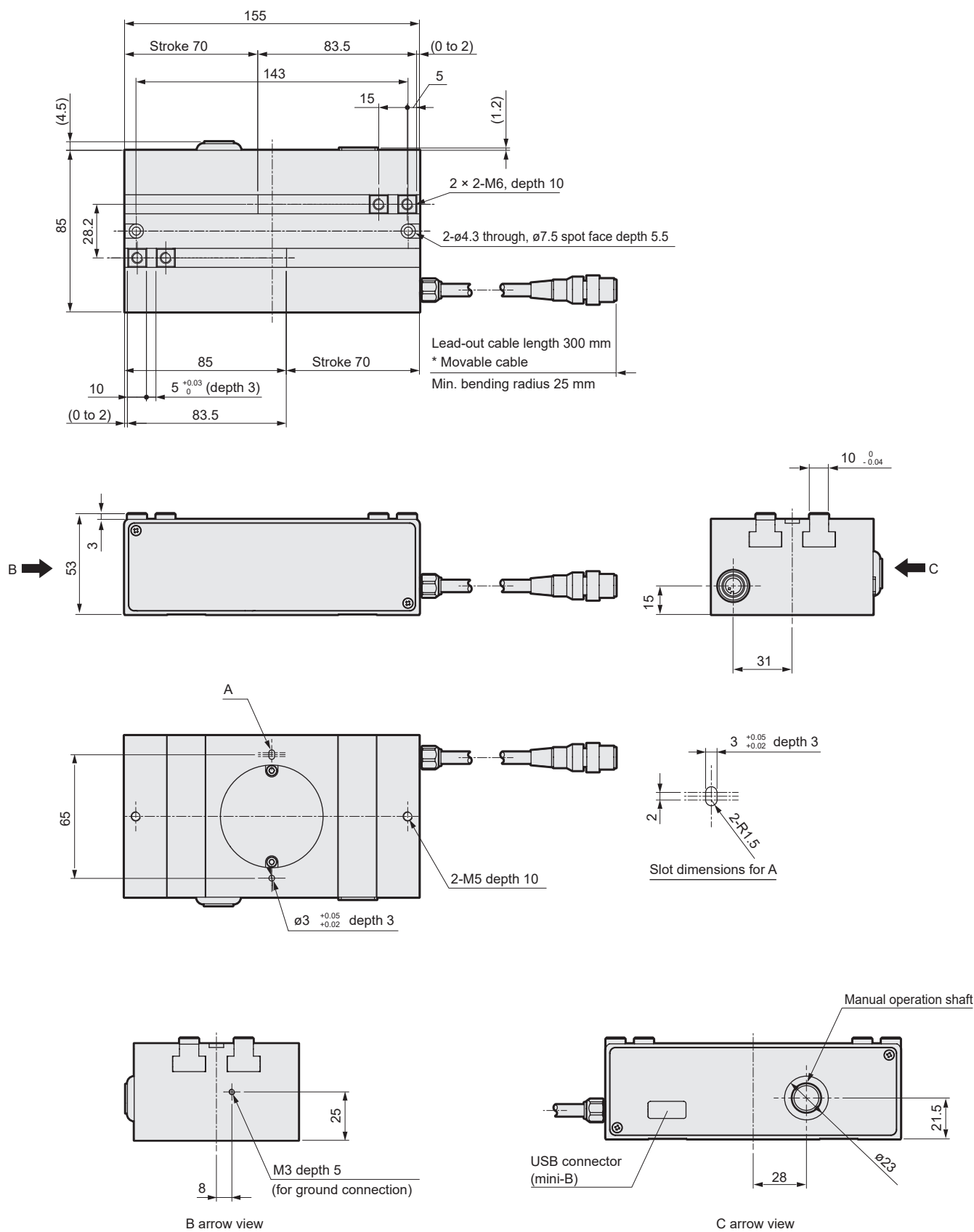
* Gripping speed is for 5mm/s. (L=30)

* The setting range for the pressing rate is 30 to 100%.

*1 Gripping is done with pressing operation.

*2 Repeatability indicates variation when the same workpieces are gripped repeatedly with the same operating conditions.

*3 The variation of stopping position when positioning is repeatedly performed to the same point is shown.





Electric actuator 2-Finger Gripper high speed

FFLD-50H

□ 35 Stepping motor



How to order

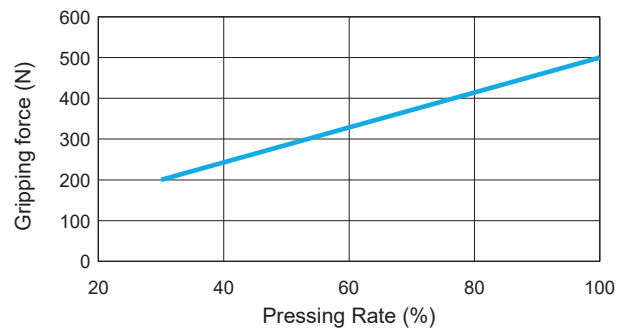
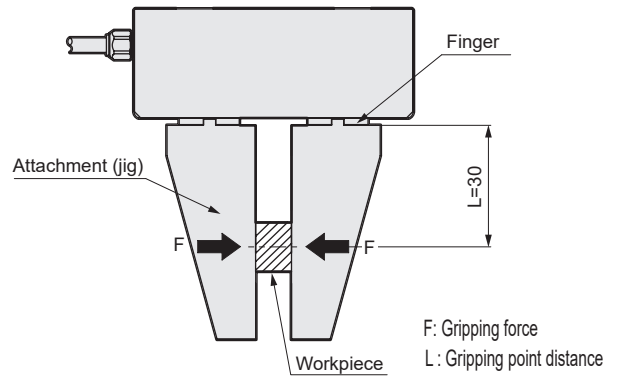
FFLD - **50** **H** **80** **N C N 30** - **LK** **S** **R00**

A Gripping force	B Stroke	C Interface specification	D Relay cable
50 500 N	80 160 mm (single side 80 mm)	LK IO-Link	R00 Movable cable

Specifications

Gripping force and pressing rate

Motor	□ 35 Stepping motor
Encoder-type	Incremental encoder
Drive method	Rack and pinion, worm gear
Controller	Built in
Stroke	mm 160 (80 per side)
Max. gripping force *1	N 500 (per side)
Open/close speed range	mm/s 1 to 30 (per side)
Gripping speed range *1	mm/s 1 to 5 (per side)
Repeatability *2	mm ±0.02
Positioning repeatability *3	mm ±0.05 (per side)
Lost motion	mm 0.4 or less (per side)
Static allowable moment	N·m MP=64, MY=55, MR=64
Settings tool	Setting software (S-Tools)
External interface	IO-Link
Power supply	Communication/control 24 VDC ±10%
voltage	Power 24 VDC ±10%
Current	Communication/control A 0.2 or less
consumption	Power A 3.0 or less
Motor section max. instantaneous current	A 4
Power capacity	Max. 100 W
Insulation resistance	10 MΩ, 500 VDC
Withstand voltage	500 VAC for 1 minute
Operating ambient temperature, humidity	0 to 40 °C (no freezing) 35 to 80% RH (no condensation)
Storage ambient temperature, humidity	-10 to 50 °C (no freezing) 35 to 80% RH (no condensation)
Atmosphere	No corrosive gas, explosive gas, or dust
Degree of protection	IP20
Weight	kg 2.7



* The correlation diagram of the gripping force and pressing rate shows a guideline. Individual motor differences and variations in mechanical efficiency may result in differing actual values, even at the same pressing rate.

* Gripping speed is for 5mm/s. (L=30)

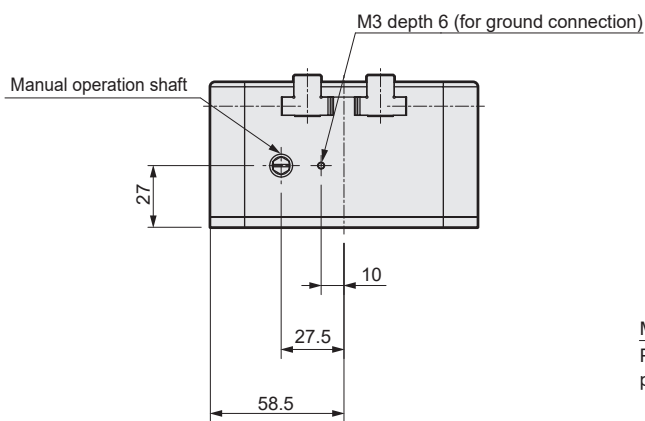
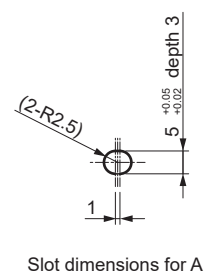
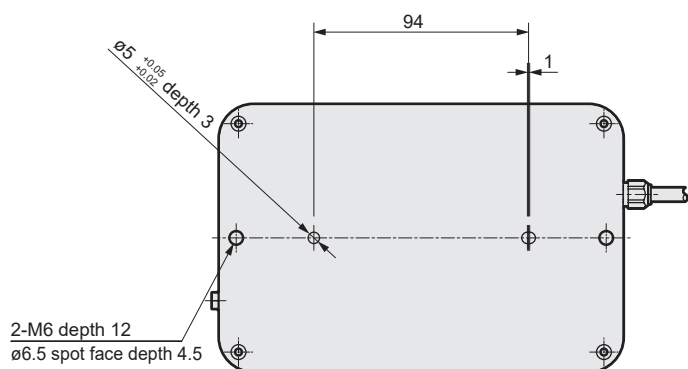
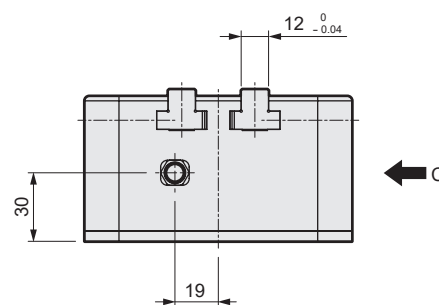
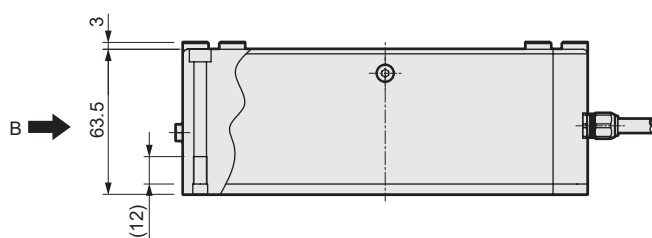
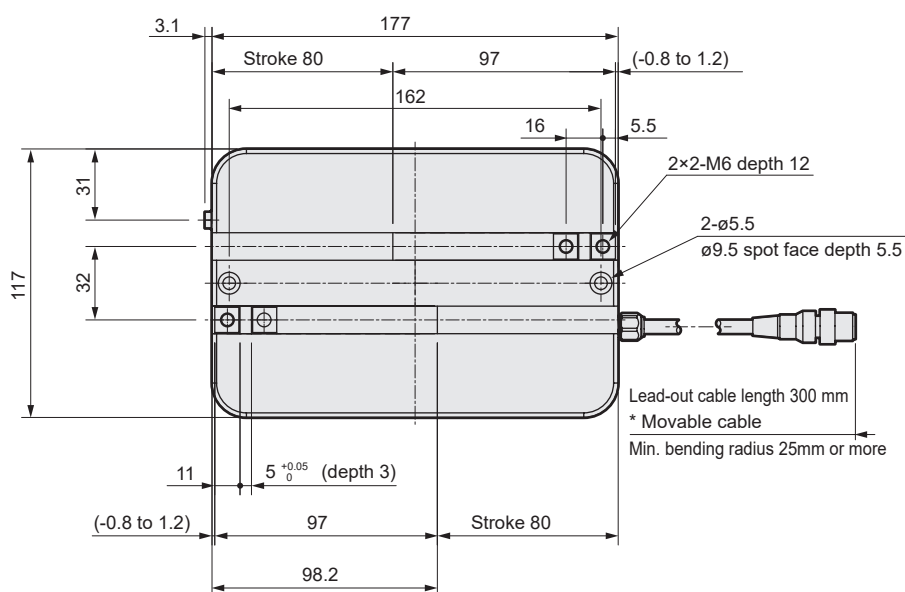
* The setting range for the pressing rate is 30 to 100%.

*1 Gripping is done with pressing operation.

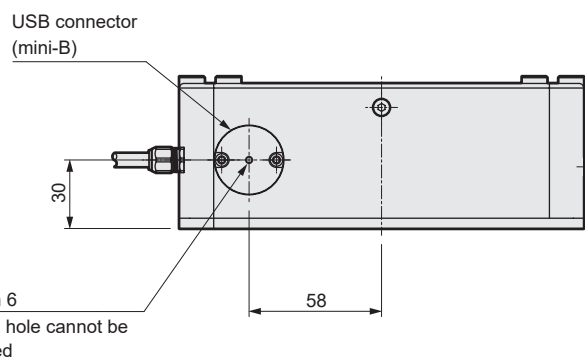
*2 Repeatability indicates variation when the same workpieces are gripped repeatedly with the same operating conditions.

*3 The variation of stopping position when positioning is repeatedly performed to the same point is shown.

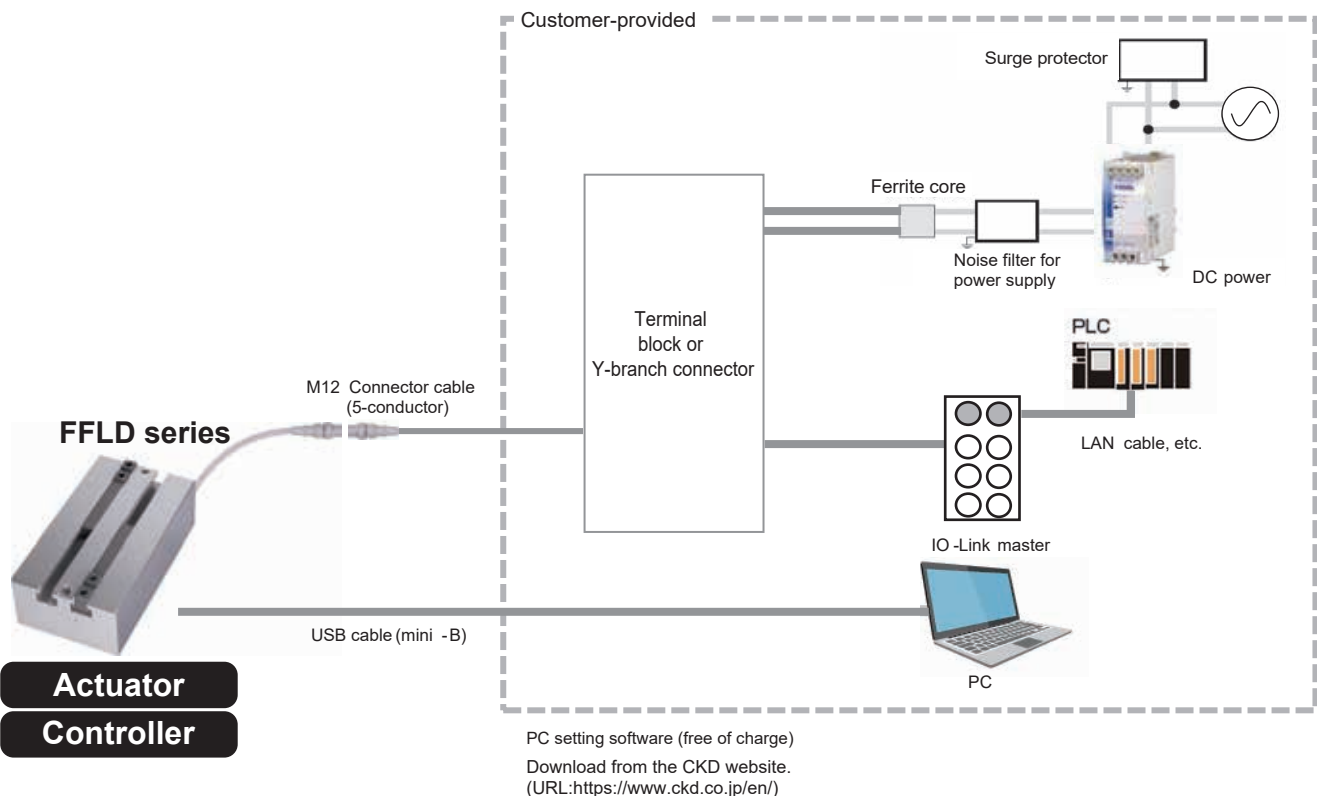
Dimensions



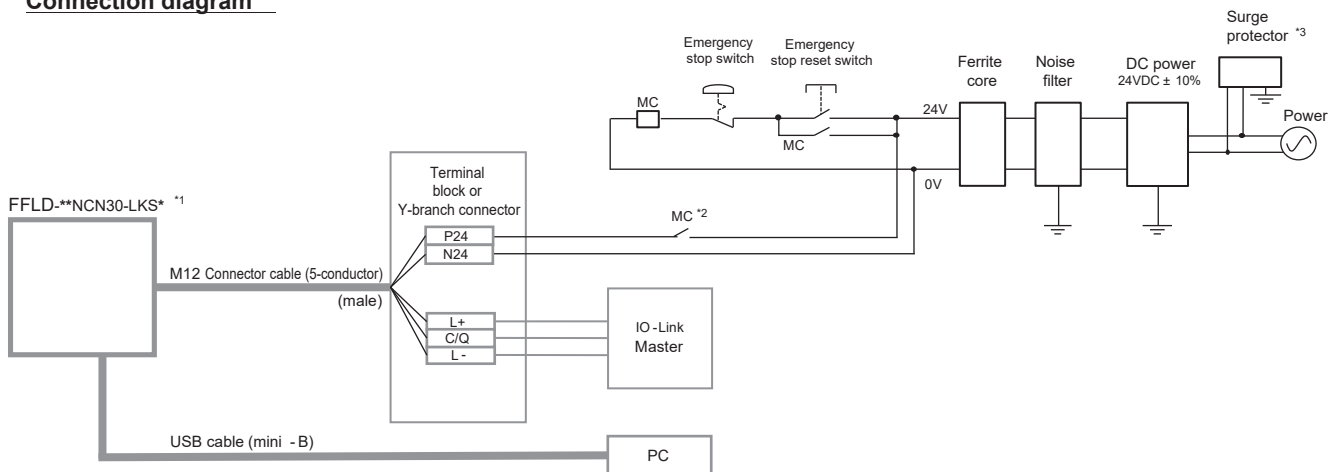
B arrow view



C arrow view



Connection diagram

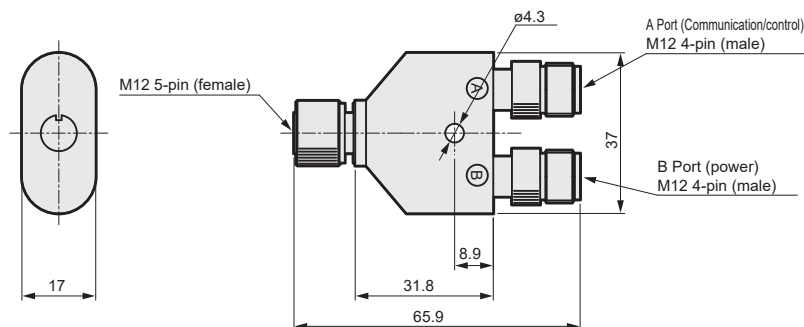


*1 It is not a IO-Link ClassB-compliant product. It is possible to connect to the IO-Link Class B master, however, communication/control and motor power supplies are isolated, so other equipment may be affected if an error occurs. Refer to the instruction manual before wiring. Incorrect wiring could result in part damage.

*2 If the motor drive source must be shut off for safety category compliance, etc., connect a contact such as an electromagnetic switch.

*3 A surge protector is required to comply with the CE marking.

Y branch connector EA-YJOINT-1



Refer to the Instruction Manual for the wiring diagram.

Field Network Description

Overview	
FDP	64 point operation is possible. Switching the direct travel selection signal enables full direct value operation with which the operating conditions can be set to a desired value from the PLC. Monitoring can also be confirmed. Refer to the table below for details.

	Direct value travel selection	Positioning point count	Direct value travel Item									Monitor Item		
			Target position	Speed	Pressing rate	Pressing speed	Position specification method	Operation mode	Stop method	Point zone +	Point Zone -	Position	Current	Speed
FDP	0	64 points	-	-	-	-	-	-	-	-	-	○	▲	▲
	1	No limit	○	○	○	○	○	○	○	○	○	○	▲	▲

*For ▲, use ▲ to select only 1 item to be monitored -: N/A, ○: Yes, ▲: Conditional

[Communication specifications]

Item	Specifications
Communication protocol version	V1.1
Transmission bit rate	COM2 (38.4kbps)
Port	Class A
Process data length (Input)	5 byte
PD (in) data length	
Process data length (Output)	15 byte
PD (out) data length	
Minimum cycle time	10ms
Monitor function	Position, current, speed

Cyclic data from master

PD (out)	Bit	Item
0	7	-
	6	Stop
	5	Alarm reset
	4	Servo ON
	3	Origin return start
	2	Travel start
	1	Direct value travel selection
	0	-
1	7	-
	6	-
	5	Point number confirmation bit 5
	4	Point number confirmation bit 4
	3	Point number confirmation bit 3
	2	Point number confirmation bit 2
	1	Point number confirmation bit 1
	0	Point number confirmation bit 0
2 to 3	7 to 0	Position (direct value travel)
4	7 to 0	Speed (direct value travel)
5	7 to 0	Pressing ratio (direct value travel)
6 to 7	7 to 0	Pressing distance (direct value travel)
8	7 to 0	Pressing speed (direct value travel)
9	7	Position specification method (direct value travel)
	6 to 5	Operation method (direct value travel)
	4 to 3	-
	2 to 0	Stop method (direct value travel)
10 to 11	7 to 0	Point zone(+) (direct value travel)
12 to 13	7 to 0	Point zone (-) (direct value travel)
14	7	INCH selection
	6	JOG/INCH(+) Travel start
	5	JOG/INCH (-) travel start
	4 to 3	-
	2 to 0	Monitor selection

Cyclic data from controller

PD (in)	Bit	Item
0	7	Operation preparation complete
	6	Warning
	5	Alarm
	4	Servo ON state
	3	Origin return complete
	2	Travel complete
	1	Moving
	0	Point zone
1	7	Direct value travel status
	6	-
	5	Point number confirmation bit 5
	4	Point number confirmation bit 4
	3	Point number confirmation bit 3
	2	Point number confirmation bit 2
	1	Point number confirmation bit 1
	0	Point number confirmation bit 0
2 to 3	7 to 0	Current position
4	7 to 0	Selection monitor

FFLD

FFLD
(High speed)

System
Configuration

Field Network
Description

Model Selection

Technical Data

Safety
Precautions